

FOR LEASE

**Warehouse with Office
972sf**



**25 Commercial Blvd., Unit J,
Novato, CA**

**Back warehouse unit
available, just off Highway 101
in the Bel Marin Keys area.**

**Unit has office, rollup door,
personnel door and
bathroom. One year lease.**

Rent \$1,264.00/month

**Terms: Lessee pays own PG&E,
pro-rata share of building
water, and pro-rata property
tax increases, if any, over base
year. General liability
insurance required.**

HOEY COMPANY

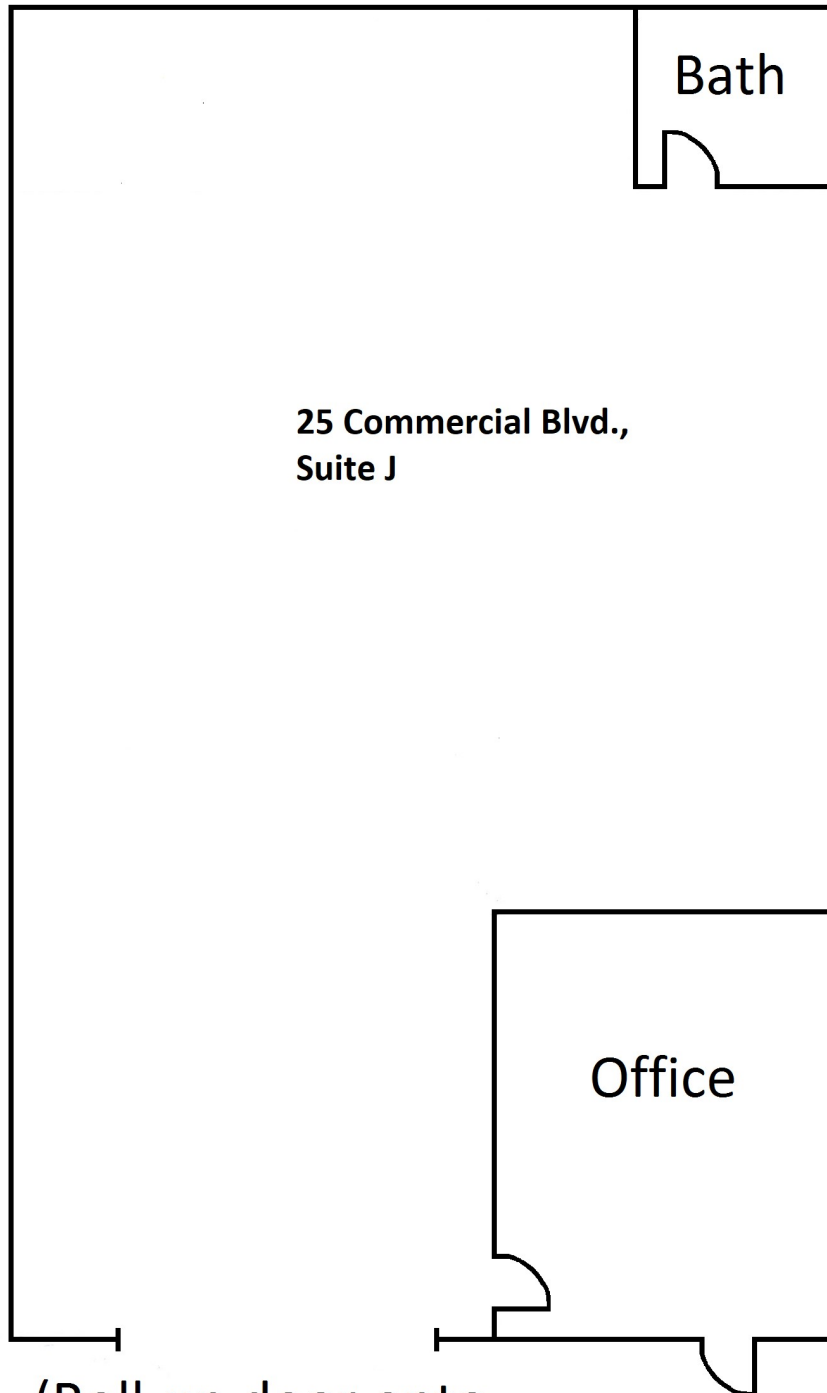
Commercial Properties

58 Paul Drive, Ste. F
San Rafael, CA 94903
415-479-9890
commprop@hoeycompany.com

HOEY COMPANY

Commercial Properties
58 Paul Drive, Ste. F
San Rafael, CA 94903
415-479-9890

**Floor Plan:
25 Commercial Blvd., Unit J
Novato, CA**



(Roll-up door onto
driveway)

Dimensions approximate, not to scale