

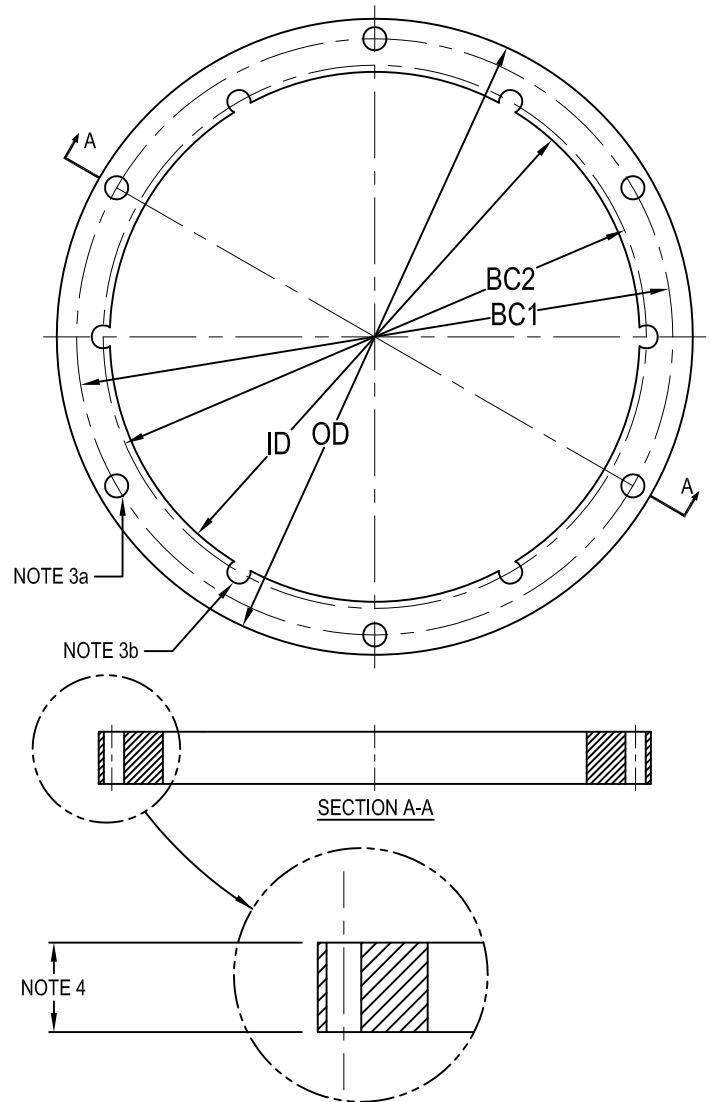


L-868 Class 1A Spacer Ring

Bottom / Middle / Top Sections

Size B Spacer Ring shown with double bolt pattern

1. Approved and Certified to FAA Advisory Circular AC150/5345-42F L868 class 1A
 Size: B=12", C=15"
2. Spacer Rings made to Class 1A :
 Galvanized to ASTM-A123/A123M-02
- 3a. (6) 7/16" Ø equally spaced, thru holes
- 3b. (6) 7/16" Ø equally spaced, partial holes
4. Available in 1/16" increments
 5/16" min. to 2" max.
5. Spacers above 1/4" thickness are shipped with:
 (6) 3/8"-16 x (Ring Thickness + 1 1/8") Min.
 SS hex head cap screws
 (6) 3/8", 2 piece locking washers
 (JI Pt. No. 10680607)



TYPE	OD	ID	BC1	BC2
AR5422 _ _	12"	10"	11.25"	10.25"
12" L868B	[305]	[254]	[285.8]	[260.4]
AR5522 _ _	15"	13"	14.25"	13.25"
15" L868C	[381]	[330.2]	[362]	[336.5]

[] = dimensions in metrics; mm.