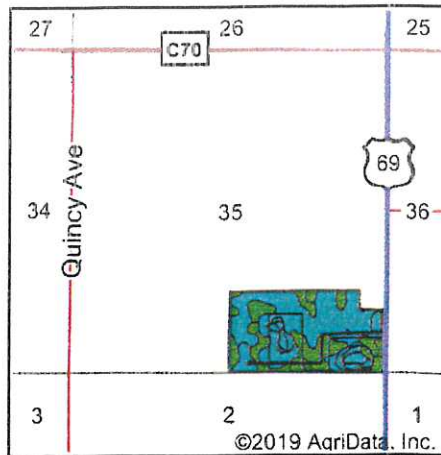
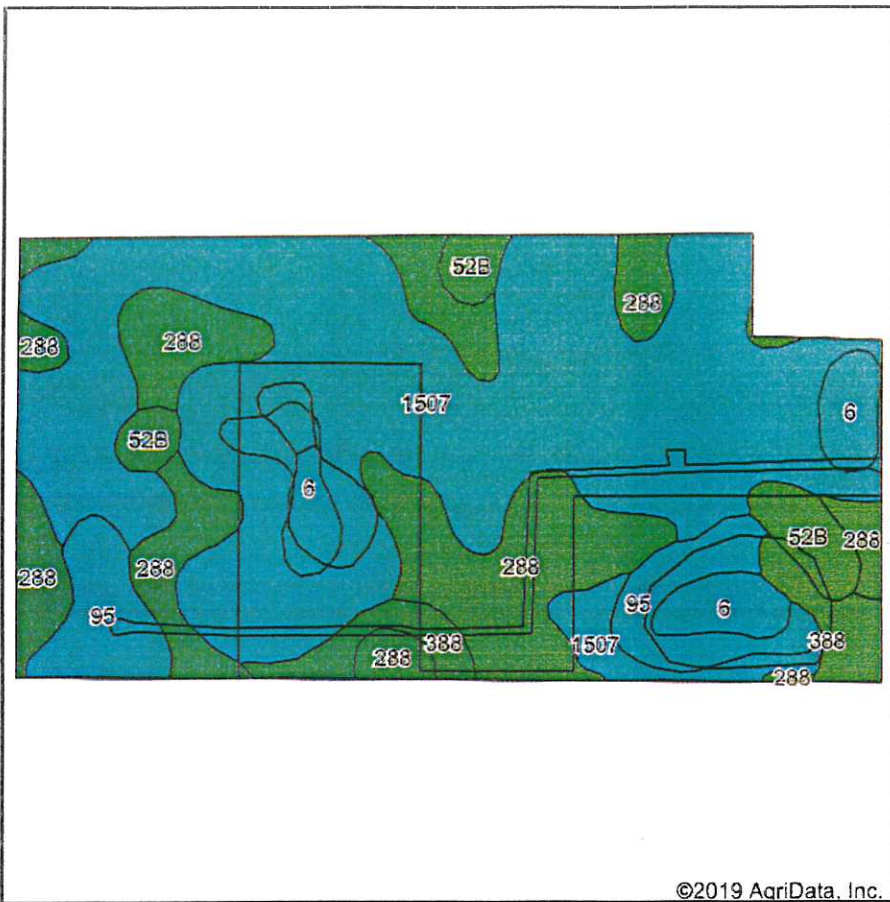


# Soils Map



State: **Iowa**  
 County: **Wright**  
 Location: **35-90N-24W**  
 Township: **Wall Lake**  
 Acres: **74.72**  
 Date: **11/21/2019**



Soils data provided by USDA and NRCS.

Area Symbol: IA197, Soil Area Version: 28

Code	Soil Description	Acres	Percent of field	CSR2 Legend	Water Table	Restrictive Layer	Septic Limits	Foundation Limits	Non-Irr Class *c	CSR2**	CSR	*n NCCPI Soybeans
1507	Brownton silty clay loam, 0 to 2 percent slopes	40.89	54.7%		0ft.	> 6.5ft.	very limited	very limited	llw	62	72	64
288	Ottosen clay loam, 1 to 3 percent slopes	17.61	23.6%		1.5ft.	> 6.5ft.	very limited	very limited	lw	91	84	81
95	Harps clay loam, 0 to 2 percent slopes	5.53	7.4%		0ft.	> 6.5ft.	very limited	very limited	llw	72	62	77
6	Okoboji silty clay loam, 0 to 1 percent slopes	4.64	6.2%		1.3ft.	> 6.5ft.	very limited	very limited	lllw	59	57	77
388	Kossuth silty clay loam, 0 to 2 percent slopes	3.11	4.2%		0ft.	> 6.5ft.	very limited	very limited	llw	86	77	90
52B	Bode clay loam, 2 to 6 percent slopes	2.94	3.9%		3.6ft.	> 6.5ft.	very limited	somewhat limited	lle	91	78	79
<b>Weighted Average</b>										<b>71.5</b>	<b>73.6</b>	<b>*n 71.4</b>

\*\*IA has updated the CSR values for each county to CSR2.  
 \*n: The aggregation method is "Weighted Average using major components"  
 \*c: Using Capabilities Class Dominant Condition Aggregation Method  
 Soils data provided by USDA and NRCS.