

WEST FORK RANCH



16TH ANNUAL BULL SALE

MARCH 27, 2021 - 1:00 PM

AT THE RANCH NEAR LOUP CITY, NE

WEST FORK RANCH

16TH ANNUAL BULL SALE

MARCH 27, 2021

1:00 PM - AT THE RANCH

CHAROLAIS & RED ANGUS BULLS SELL

Cattlemen,

Welcome to the 16th annual West Fork Ranch bull sale. As we put 2020 behind us and look ahead there is one thing that stands out to me, people in agriculture are some of the toughest around. We don't stop, we don't give up, we just keep on keeping on. And in today's world there is no where I would rather be than surrounded by those people.

My Dad started our Charolais herd back in 1986 buying a few heifers and that started his addiction, yes addiction, which he passed on to me. We added the Red Angus about 10 years later because he saw they would make a good cross. My Dad and Mom have passed but the addiction to improve the herd and raise a great one lives on. My nephew Jarod and his family are on the ranch helping and I hope I can pass the addiction on. This year we are excited to again offer an outstanding set of stout made and high performing bulls both in the Charolais and the Red Angus. We have sorted through the bulls several times to only bring you the top. A note about the birth weights, all of our calves are weighed on one of two digital scales, so the birth weights are to the pound. The bulls get creep a month before weaning to help them get started.

If you need more information or you would like to view the bulls prior to the sale please call. Scheduling a time to look at the bulls allows me to better serve you. I would be happy to visit with you and offer help in choosing the bull(s) that will fit your program. I can e-mail digital photos on any bull of interest. If I can be of assistance, please call my cell phone at 308-750-8708.

Check the website, photos and videos will be uploaded as they are available. www.westforkranch.com

We look forward to seeing you on Saturday, March 27th. Plan to join us for lunch.

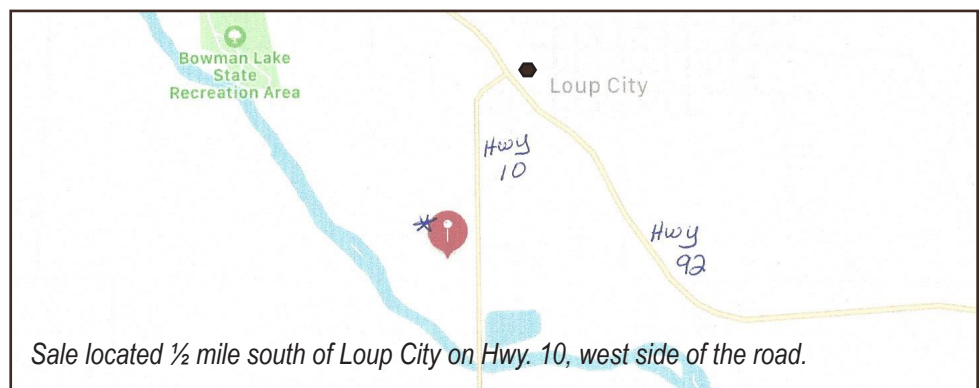
Thank you,

Rosie

Roseann Wilson

Cell: 308-750-8708

or e-mail: rosie@westforkranch.com



SALE DAY CONTACTS:

Roseann Wilson, Owner.....308-750-8708
Jarod Wilson.....308-750-8710

LODGING:

Colony Inn, Loup City.....308-745-0164

SALE DAY PROCEDURE:

The sale process will be similar to a silent auction. The bulls will be split into pens for viewing and there will be a master board in the barn with a card for each bull with the base price. Buyers will receive a buyer number. By placing your buyer number on the cards of the bulls that you want to bid on, it gives you the option to bid on that bull. Starting at 1:00 p.m., there will be a bid-off between the buyers who have placed their number on a given bull. We will start with the bull with the most interest on him. Putting your number on a bull does not obligate you to bid on that bull but gives you the option to bid. At any time you may remove your number from a bull. After the first round of bidding, we will take a short break to view the bulls that have not sold. The bidding will then be open to everyone on the remaining bulls. We have chosen this merchandising format to give all our customers the opportunity to purchase from our entire group of bulls. You are welcome to stop at the ranch to view the bulls prior to the sale. If you are interested in bidding on a bull, but are unable to attend on sale day, we will work with you. Phone bids will be accepted.

BULL BREEDING GUARANTEE:

All of the bulls have been semen checked. All bulls are guaranteed to be breeders. Any bull that has not been proven a breeder within 90 days after June 1st, if in healthy condition, may be returned to us, at the buyer's expense. West Fork Ranch reserves the right to test the bull.

BULL DATA:

All bulls will be ultrasounded prior to the sale and a supplement sheet with this data and scrotal circumference will be available on the website as we get it and sale day.

TERMS :

The terms of the sale are cash or check payable to West Fork Ranch unless satisfactory credit arrangements have been made prior to the sale. The right of property shall not pass until after settlement is made. All settlements must be made with the clerks of the sale before any cattle will be released.

HEALTH:

Health of the West Fork Ranch herd is excellent. Individual health papers will be provided for shipment anywhere.

ACCIDENTS AND LIABILITIES:

All persons attend the sale at their own risk. The seller and sales management assume no liability, legal or otherwise, for any accidents occurring in, on, or about the premises. The buyers must look to the seller for fulfillment of all guarantees and representations made hereunder.

ABSENTEE BIDS:

Anyone wishing to bid who cannot attend the sale may place phone or mail bids by contacting Roseann Wilson or any listed sale representative.

DELIVERY OPTIONS :

Bulls purchased on March 27th will be delivered within 2 weeks free of charge up to 200 miles.

REGISTRATION & TRANSFER:

Registration certificates will be transferred to buyers at seller's expense on request. When making settlement, buyers must give complete name and address information.

DIRECTIONS:

Sale located ½ mile south of Loup City on Hwy. 10, west side of the road.
Physical Address: 78939 Hwy 10, Loup City, NE

University studies in Wyoming and data from Montana and Colorado lend credence to the following conclusions

1. The birth weight itself influences calving ease by 65%.
2. The female has 60-70% influence on birth weight of her calf.
3. The bull has 30-40% influence on birth weight of his progeny.
4. Pelvic measurement and angle as well as the shape of the calf have 35-40% influence on calving ease.
5. Length of gestation greatly affects birth weight. A fetus can gain over one pound per day in the last days of gestation.
6. Weather and temperature the last 30 days affect the length of gestation.
7. Size and maturity of the cow influence calving ease.
8. Most commercial producers do not take birth weights.
9. Guessing is as inaccurate as driving with a broken speedometer. What is thought to be 55 mph may in fact be 65 or 70 mph, and in the case of a calf, what is thought to be 70-80 pounds may actually be 80-90 pounds.
10. Remember, if everything is relevant, increased growth, frame and performance will increase birth weight.
11. A longer bodied calf will weigh more. If a calf is expected to have genetics for growth, it will display this prior to birth as well as after.
12. As a rule of thumb, it takes a calf weighing 85 lbs. at birth to finish at 1,200-1,250.
13. A cow should easily give birth to a calf weighing 8% of her own body weight. Thus, a 1,200 pound cows should give brith to a 96 pound calf with ease.

Continued selection for light birth weights will ultimately reduce the mature sizes and performance of your cattle.

credit: OutlookVet.com

CHAROLAIS NON-PARENT EPD AVERAGES - 2021

CE	BW	WW	YW	M	MCE	TM	SC	CW	REA	FAT	MARB	TSI
5.5	0.3	32	59	10	5.3	26	0.9	21	0.70	0.009	0.11	205.38

EXCITING NEW HERD SIRES

REF BRCHE CASHING OUT 8520 PLD ET
2/19/2018 EM913053 P

LT LONG DISTANCE 9001 PLD
M&M OUTSIDER 4003 PLD
M846631
M&M MS CARBINE 1567 PLD
TR SMOKEONTHEWATER ET
CC SMOKETTE 4076 ET P
EF1208175
ALC KATE T07K

CW 18
REA 0.59
Fat 0.027
MB -0.17

BW:90

	CE	BW	WW	YW	Milk	MCE	Mtnl	SC	TSI
EPDs:	8.9	-0.8	35	59	5	4.0	23	0.7	196.03

REF WFR GOLD RUSH 7200 P
2/3/2017 M924810 P

LT RIO BRAVO 3181 P
LT RUSHMORE 8060 PLD
M760665
LT BRENDA'S EASE 3055PLD
JAB DRINK IN MY HAND 157 PLD
WFR SOBE 581 P
F1251150
WFR BREEZY 3151 P

CW 16
REA 0.49
Fat 0.023
MB 0.14

BW:78 AWW: 580 R:105

	CE	BW	WW	YW	Milk	MCE	Mtnl	SC	TSI
EPDs:	12.8	-2.8	27	49	19	5.6	32		197.86

Cashing Out was the Champion Charolais bull and high selling bull of all breeds at the 2019 Nebraska Cattlemen's Classic. We are excited to get calves out of him this spring. Look for offspring in this fall's calf sale and next year's bull sale.



CHAROLAIS REFERENCE SIRES

REF LT VENTURE 3198 PLD

3/11/2013 M835612 P

LT WESTERN EDGE 4057 PLD
 LT STAGECOACH 8068 PLD
 M760644
 LT LADY MACBETH 2131 PLD
 LT EASY PRO 1158 PLD
 LT BALLET 9219 POLLED
 F1107686
 LT BALLET 6233

CW 33
 REA 0.94
 Fat 0.034
 MB 0.00

	CE	BW	WW	YW	Milk	MCE	Mtnl	SC	TSI
EPDs:	4.5	0.0	41	81	1	4.2	22	1.5	223.18



REF BROBERG'S NORTH STAR D52

4/5/2016 M897347 P

LT RUSHMORE 8060 PLD
 CCC WC RESOURCE 417 P
 M846721
 WC CCC BLUE GIRL 1528 P
 HCR BLUEGRASS 0049 PLD
 BROBERG'S MS BLUEGRASS A81
 F1174160
 BC MS ALLIANCE S104

CW 26
 REA 0.92
 Fat 0.023
 MB 0.25

	CE	BW	WW	YW	Milk	MCE	Mtnl	SC	TSI
EPDs:	-0.3	3.3	45	67	13	4.2	35	0.6	208.69

Broberg's North Star D52 was the high selling bull on Broberg's sale in 2018. We are excited to offer his first progeny this spring in the sale.

Semen is available!



REF JAB DRINK IN MY HAND 157 PLD

12/7/2011 M816822 P

LT ASSERTION 1277 P
 LT BLUEGRASS 4017 P
 M686569
 LT PEARL'S BREEZE 2236 P
 TR MR FIRE WATER 5792RET
 JAB COTTON CANDY 001 POLLED
 F1119733
 JAB ONE HOT MAMMA 399 P

CW 17
 REA 0.85
 Fat 0.011
 MB 0.04

BW: 90 AWW: 766 R:103

	CE	BW	WW	YW	Milk	MCE	Mtnl	SC	TSI
EPDs:	-3.3	5.3	26	55	15	8.5	29	1.1	197.35



REF LT AFFINITY 6221 PLD

3/10/2016 M880381 P

LT RIO BRAVO 3181 P
 LT RUSHMORE 8060 PLD
 M760665
 LT BRENDA'S EASE 3055PLD
 WINN MANS LANZA 610S
 LT ATHENA 1247
 F1140204
 LT SILVER ATHENA 7123 P

CW 13
 REA .54
 Fat 0.032
 MB .32

BW: 88 AJWW: 817 R:101

	CE	BW	WW	YW	Milk	MCE	Mtnl	SC	TSI
EPDs:	10.7	-4.1	24	59	15	0.0	27	1.0	216.74



REF SHF ADDICTION 1609
4/3/2016 M875086 P

EJS PERFECT WIND 3010 ET

SHF REHAB 8104 M769775

ACE-SHF MS MAC S5224

TR MR FIRE WATER 5792RET

SHF KCB MS DYNASTY 1411ET EF1186664

ACE MS DYNASTY 7117

BW: 86 AJWW: 902 R:100

CE	BW	WW	YW	Milk	MCE	Mtnl	SC	TSI
EPDs:	-4.1	2.8	38	60	8	-1.5	26	1.1 198.36

CW	20
REA	0.66
Fat	0.007
MB	0.04



REF RBM RHINESTONE E175
2/13/2017 EM893037 P

LT BLUEGRASS 4017 PLD

RBM TR RHINESTONE Z38 EM823104

HC RHINESTONE 5100

TR MR FIRE WATER 5792RET

TR MS WYLIE FIRE 0761X ET EF1120950

TR MS WYOMING WIND 5604R

BW: 88 AJWW: 785 R:100

CE	BW	WW	YW	Milk	MCE	Mtnl	SC	TSI
EPDs:	3.5	1.1	22	46	12	3.0	23	0.8 194.40

CW	12
REA	0.54
Fat	0.007
MB	0.15

REF BROBERG'S RESOURCE E10
3/29/2017 M914663 P

LT RUSHMORE 8060 PLD

CCC WC RESOURCE 417 P M846721

WC CCC BLUE GIRL 1528 P

WC BIG BEN 9036 P

BROBERG'S MS BEN C12 F1210526

BROBERG'S MS SOLUTION Z46

BW: 64 AJWW: 642 R:95

CE	BW	WW	YW	Milk	MCE	Mtnl	SC	TSI
EPDs:	13.6	-4.8	26	45	14	9.6	27	1.0 197.26

CW	22
REA	0.73
Fat	0.022
MB	0.17

REF JASR SNIPER 26B PLD
3/29/2014 M854302 P

LT JOURNEYMAN 0123

SF JOURNEYMAN 1239 P M816749

SF MISS TANYA 0820 P

JASR POLAR EXPRESS 15V PLD

JASR LONDON 18Z PLD F1152298

FINK LADY 7785 5797 SPUR

BW: 70 AJWW: 849 R:109

CE	BW	WW	YW	Milk	MCE	Mtnl	SC	TSI
EPDs:	4.1	1.0	36	61	6	8.1	24	0.9 202.60

CW	22
REA	0.69
Fat	0.018
MB	0.06

REF WFR TANK 6030 P
2/21/2016 M919876 P

LT PATRIOT 4004 PLD M852822

LT LEDGER 0332 P

LK MISS RIO 2119

WFR SURVIVOR 2030 P

WFR SYDNEY 721 P F1095357

WFR FLARE 758

BW: 94 ADJWW: 713 R:120

CE	BW	WW	YW	Milk	MCE	Mtnl	SC	TSI
EPDs:	6.1	-0.6	34	63	16	5.1	34	0.9 207.46

CW	24
REA	0.64
Fat	0.025
MB	0.10

REF WFR BEN 6083 P
2/1/2016 M920021 P

LT BLUEGRASS 4017 P

WC BIG BEN 9036 P EM775980

VCRMISSDUCHESS9506POLLED

HCR AGENT 9110 PLD

WFR SECRET 4147 P F1231528

WFR LADY THUNDERING WIND 062 P

BW: 72 AJWW: 561 R:96

CE	BW	WW	YW	Milk	MCE	Mtnl	SC	TSI
EPDs:	13.6	-2.6	30	52	-7	12.3	8	1.7 200.18

CW	9
REA	0.57
Fat	0.036
MB	0.15

REF WFR LANDMARK 8083 PLD
1/28/2018 M948651 P

LT RUSHMORE 8060 PLD

LT LANDMARK 5052 PLD M866771

LT JENNY 3028 PLD

SCC 193Y 12B PLD

WFR RANDI 626 P F1269037

WFR HENRIETTA 323 P

BW: 75 AJWW: 720 R:110

CE	BW	WW	YW	Milk	MCE	Mtnl	SC	TSI
EPDs:	12.8	-3.7	25	47	20	0.0	32	0.4 195.22

CW	15
REA	0.96
Fat	0.008
MB	-0.10

CHAROLAIS BULLS



WFR Rhinestone 0018 P, pedigree on page 10.



WFR Affinity 0051 P, pedigree on page 11.



WFR Venture 0062 P, pedigree on page 13.



WFR Affinity 0069 P, pedigree on page 14.



WFR Addiction 0092 P, pedigree on page 14.



WFR Drink 0097 P, pedigree on page 15.



WFR Cash 0228 P, pedigree on page 15.



WFR 0252 P, pedigree on page 15.

WFR CASH 001 P

DOB: 3/21/2020 • M949839 • Tattoo: 001 • P
 M&M OUTSIDER 4003 PLD
 BRCHE CASHING OUT 8520 PLD ET
 EM913053 CC SMOKETTE 4076 ET P

		Ratio
BW	78	90
AWW	680	104
ADG		
SC		
	EPD	Top%
MB	0.06	
CWT	13	
REA	0.58	
FAT	0.017	

SC BRIDGER 1218 P
 WFR SUZIE 7101 P
 F1285573 WFR BLUE 3145 P

	CE	BW	WW	YW	Milk	MCE	Mtnl	SC	TSI
EPDs:	10.8	-2.5	30	54	7	7.5	22	0.6	200.32
Top %									

WFR CASH 002 P

DOB: 3/21/2020 • M949835 • Tattoo: 002 • P
 M&M OUTSIDER 4003 PLD
 BRCHE CASHING OUT 8520 PLD ET
 EM913053 CC SMOKETTE 4076 ET P

		Ratio
BW	78	90
AWW	658	101
ADG		
SC		
	EPD	Top%
MB	-0.11	
CWT	13	
REA	0.57	
FAT	0.012	

SCC 193Y 12B PLD
 WFR SAFFIRE 766 P
 F1285567 WFR MISS BENNIE 201 P

	CE	BW	WW	YW	Milk	MCE	Mtnl	SC	TSI
EPDs:	11.9	-3.3	25	43	8	8.5	21	0.5	187.11
Top %									

WFR SNIPER 003 P

DOB: 3/23/2020 • M949806 • Tattoo: 003 • P
 SF JOURNEYMAN 1239 P
 JASR SNIPER 26B PLD
 M854302 JASR LONDON 18Z PLD

		Ratio
BW	82	92
AWW	709	109
ADG		
SC		
	EPD	Top%
MB	0.11	
CWT	15	
REA	0.54	
FAT	0.010	

WR POLLED REX U606
 WFR REXI 458 P
 F1231544 WFR MISS BENNIE 208 P

	CE	BW	WW	YW	Milk	MCE	Mtnl	SC	TSI
EPDs:	8.8	-1.9	33	54	9	8.0	25	0.9	198.94
Top %									

WFR TANK 005 P

DOB: 3/16/2020 • M949780 • Tattoo: 005 • P
 LT PATRIOT 4004 PLD
 WFR TANK 6030 P
 M919876 WFR SYDNEY 721 P

		Ratio
BW	81	90
AWW	649	100
ADG		
SC		
	EPD	Top%
MB	0.09	
CWT	20	
REA	0.61	
FAT	0.018	

WR WRANGLER W601
 WFR LADY WRANGLER 501 P
 F1301345 WFR MISSY'S THUNDER 354 P

	CE	BW	WW	YW	Milk	MCE	Mtnl	SC	TSI
EPDs:	8.3	-2.5	34	57	11	7.2	27	1.1	203.04
Top %									

WFR CASH BACK 05 P

DOB: 3/21/2020 • M949819 • Tattoo: 05 • P
 M&M OUTSIDER 4003 PLD
 BRCHE CASHING OUT 8520 PLD ET
 EM913053 CC SMOKETTE 4076 ET P

		Ratio
BW	87	98
AWW	746	114
ADG		
SC		
	EPD	Top%
MB	-0.02	
CWT	14	
REA	0.50	
FAT	0.010	

KAYR VELOCITY 812Z
 WFR VALERIE 633 P
 F1269034 WFR MISS BENNIE 208 P

	CE	BW	WW	YW	Milk	MCE	Mtnl	SC	TSI
EPDs:	5.0	0.2	37	61	8	4.8	27	0.8	199.87
Top %									



WFR Cash Back 05 P, Lot 05.

These are the first Cashing Out sons to sell this year and WFR Cash Back 05 is one of the best bulls ever raised on the ranch.. His dam 633 is a outstanding cow in the herd.

One of my favorites. He has an outcross pedigree that is stacked with some great genetics. He is good footed, deep bodied, wide tracking, has a lot of eye appeal and a big top with a 16.17 REA. And to top it all off he has an amazing disposition. Selling 2/3 semen interest and full possession.



WFR Valerie 633 P, dam of WFR Cash Back 05P.

CHAROLAIS BULLS

WFR TANK 006 P

DOB: 3/17/2020 • M949797 • Tattoo: 006 • P
 LT PATRIOT 4004 PLD
 WFR TANK 6030 P
 M919876 WFR SYDNEY 721 P

		Ratio
BW	74	83
AWW	663	102
ADG		
SC		
	EPD	Top%
MB	0.15	
CWT	13	
REA	0.55	
FAT	0.004	

HAMM MOGO U23
 WFR MOGO 433 P
 F1231510 WFR BEE 6109 P

	CE	BW	WW	YW	Milk	MCE	Mtnl	SC	TSI
EPDs:	9.1	-3.1	24	41	9	9.5	21	0.4	191.34
Top %									

WFR CASH 008 P

DOB: 3/16/2020 • M949774 • Tattoo: 008 • P
 M&M OUTSIDER 4003 PLD
 BRCH CASHING OUT 8520 PLD ET
 EM913053 CC SMOKETTE 4076 ET P

		Ratio
BW	93	104
AWW	678	107
ADG		
SC		
	EPD	Top%
MB	0.00	
CWT	15	
REA	0.56	
FAT	0.020	

HCR ONLINE 7075 PLD
 WFR YOLI 1000 P
 F1177499 WFR INEZ 4000 P

	CE	BW	WW	YW	Milk	MCE	Mtnl	SC	TSI
EPDs:	4.0	1.5	35	57	7	4.3	25	0.4	195.40
Top %									

WFR RHINESTONE 009 P

DOB: 3/25/2020 • M949809 • Tattoo: 009 • P
 RBM TR RHINESTONE Z38
 RBM RHINESTONE E175
 EM893037 TR MS WYLIE FIRE 0761X ET

		Ratio
BW	90	100
AWW	628	96
ADG		
SC		
	EPD	Top%
MB	0.14	
CWT	15	
REA	0.65	
FAT	0.007	

JAB DRINK IN MY HAND 157 PLD
 WFR SOBE 5122 P
 F1251135 WFR PRO LADY 982 P

	CE	BW	WW	YW	Milk	MCE	Mtnl	SC	TSI
EPDs:	6.1	0.2	18	39	16	5.6	25	0.7	189.16
Top %									

WFR RHINESTONE 0011 P

DOB: 3/24/2020 • M949791 • Tattoo: 0011 • P
 RBM TR RHINESTONE Z38
 RBM RHINESTONE E175
 EM893037 TR MS WYLIE FIRE 0761X ET

		Ratio
BW	96	107
AWW	593	91
ADG		
SC		
	EPD	Top%
MB	0.12	
CWT	12	
REA	0.51	
FAT	0.008	

WC BIG BEN 9036 P
 WFR BENNI 366 P
 F1231497 WFR BLUEYE 154 P

	CE	BW	WW	YW	Milk	MCE	Mtnl	SC	TSI
EPDs:	7.5	0.2	18	40	12	6.8	20	1.1	188.71
Top %									

WFR CASH 0013 P

DOB: 3/21/2020 • M949838 • Tattoo: 0013 • P
 M&M OUTSIDER 4003 PLD
 BRCH CASHING OUT 8520 PLD ET
 EM913053 CC SMOKETTE 4076 ET P

		Ratio
BW	91	105
AWW	669	103
ADG		
SC		
	EPD	Top%
MB	-0.07	
CWT	12	
REA	0.62	
FAT	0.022	

SCC 193Y 12B PLD
 WFR SAFFIRE 7313 P
 F1285572 WFR BLUE 355 P

	CE	BW	WW	YW	Milk	MCE	Mtnl	SC	TSI
EPDs:	8.8	0.0	31	54	6	6.5	22	0.5	194.63
Top %									



WFR Cash 0013 P, pedigree left.

WFR RHINESTONE 0018 P

DOB: 3/23/2020 • M949818 • Tattoo: 0018 • P
 RBM TR RHINESTONE Z38
 RBM RHINESTONE E175
 EM893037 TR MS WYLIE FIRE 0761X ET

		Ratio
BW	98	110
AWW	655	100
ADG		
SC		
	EPD	Top%
MB	0.15	
CWT	9	
REA	0.49	
FAT	0.002	

KAYR VELOCITY 812Z
 WFR VALERIE 630 P
 F1269029 WFR PORTABELLA 010 P

	CE	BW	WW	YW	Milk	MCE	Mtnl	SC	TSI
EPDs:	3.1	2.1	25	43	10	3.5	22	0.5	188.31
Top %									

WFR TANK 0019 P

DOB: 3/23/2020 • M949775 • Tattoo: 0019 • P
 LT PATRIOT 4004 PLD
 WFR TANK 6030 P
 M919876 WFR SYDNEY 721 P

		Ratio
BW	90	100
AWW	686	108
ADG		
SC		
	EPD	Top%
MB	0.13	
CWT	19	
REA	0.67	
FAT	0.020	

OAKDALE DUKE 9003P
 WFR LADY OAKIE 117 P
 F1177507 WFR PRO LADY 91 P

	CE	BW	WW	YW	Milk	MCE	Mtnl	SC	TSI
EPDs:	8.8	-1.4	32	58	18	4.6	33	0.7	205.42
Top %									

WFR DRINK 0020 P ET

DOB: 3/13/2020 • EM950273 • Tattoo: 0020 • P

LT BLUEGRASS 4017 P
 JAB DRINK IN MY HAND 157 PLD
 M816822 JAB COTTON CANDY 001 POLLED

		Ratio
BW	94	100
AWW	599	100
ADG		
SC		
	EPD	Top%
MB	0.04	
CWT	9	
REA	0.63	
FAT	0.014	

MR PRO ASSERT 7026 PLD
 WFR RINEZ 9175 P
 F1143984 WFR INEZ 5114 P

	CE	BW	WW	YW	Milk	MCE	Mtnl	SC	TSI
EPDs:	0.2	3.0	19	36	8	9.5	18	0.6	179.66
Top %									

WFR TANK 0021 P

DOB: 3/15/2020 • M949792 • Tattoo: 0021 • P

LT PATRIOT 4004 PLD
 WFR TANK 6030 P
 M919876 WFR SYDNEY 721 P

		Ratio
BW	90	100
AWW	693	106
ADG		
SC		
	EPD	Top%
MB	0.07	
CWT	18	
REA	0.55	
FAT	0.018	

WC BIG BEN 9036 P
 WFR BENNI 443 P
 F1231502 WFR INEZ 460 P

	CE	BW	WW	YW	Milk	MCE	Mtnl	SC	TSI
EPDs:	9.1	-1.3	34	60	9	9.0	26	1.0	203.74
Top %									

WFR NORTH STAR 0026 P

DOB: 3/21/2020 • M949802 • Tattoo: 4151H • P

CCC WC RESOURCE 417 P
 BROBERG'S NORTH STAR D52
 M897347 BROBERG'S MS BLUEGRASS A81

		Ratio
BW	91	102
AWW	757	116
ADG		
SC		
	EPD	Top%
MB	0.17	
CWT	24	
REA	0.77	
FAT	0.015	

WFR WIFI 1004 P
 WFR LADY WIFI 4151 P
 F1231514 WFR IMA 760 P

	CE	BW	WW	YW	Milk	MCE	Mtnl	SC	TSI
EPDs:	3.6	1.4	47	72	7	6.5	30	0.5	212.27
Top %									

WFR TANK 0028 P

DOB: 3/17/2020 • M949784 • Tattoo: 0028 • P

LT PATRIOT 4004 PLD
 WFR TANK 6030 P
 M919876 WFR SYDNEY 721 P

		Ratio
BW	94	105
AWW	660	101
ADG		
SC		
	EPD	Top%
MB	0.15	
CWT	16	
REA	0.54	
FAT	0.016	

HCR EDGE 8424 PLD
 WFR JUDY 3175 P
 F1231476 WFR IMA 727 P

	CE	BW	WW	YW	Milk	MCE	Mtnl	SC	TSI
EPDs:	6.6	0.3	31	55	12	7.4	28	0.6	200.40
Top %									

WFR 0029 P

DOB: 3/21/2020 • M949840 • Tattoo: 0029 • P

LT LANDMARK 5052 PLD
 WFR LANDMARK 8083 PLD
 M948651 WFR RANDI 626 P

		Ratio
BW	76	88
AWW	678	104
ADG		
SC		
	EPD	Top%
MB	-0.07	
CWT	11	
REA	0.76	
FAT	0.011	

SCC 193Y 12B PLD
 WFR SAFFIRE 731 P
 F1285575 WFR BENNI 443 P

	CE	BW	WW	YW	Milk	MCE	Mtnl	SC	TSI
EPDs:	13.7	-4.7	20	37	15	6.2	25	0.3	186.44
Top %									

WFR 0030 P

DOB: 3/10/2020 • M949832 • Tattoo: 0030 • P

LT LANDMARK 5052 PLD
 WFR LANDMARK 8083 PLD
 M948651 WFR RANDI 626 P

		Ratio
BW	79	92
AWW	683	105
ADG		
SC		
	EPD	Top%
MB	-0.01	
CWT	10	
REA	0.76	
FAT	0.005	

SCHRADER'S OUTCROSS 362A
 WFR SALLY 763 P
 F1285503 WFR DELLA 042 P

	CE	BW	WW	YW	Milk	MCE	Mtnl	SC	TSI
EPDs:	9.7	-3.1	23	40	20	1.2	32	0.3	188.67
Top %									

WFR AFFINITY 0051 P

DOB: 2/24/2020 • M949763 • Tattoo: 0051 • P

LT RUSHMORE 8060 PLD
 LT AFFINITY 6221 PLD
 M880381 LT ATHENA 1247

		Ratio
BW	78	94
AWW	710	100
ADG		
SC		
	EPD	Top%
MB	0.18	
CWT	12	
REA	0.59	
FAT	0.017	

RBM LONG DISTANCE C73
 WFR MISS LD 8183 P
 F1300945 WFR BENNIE 564 P

	CE	BW	WW	YW	Milk	MCE	Mtnl	SC	TSI
EPDs:	8.3	-1.9	26	51	14	2.7	27	0.7	201.80
Top %									



WFR 0030 P, pedigree above.

CHAROLAIS BULLS

WFR 0052 P

DOB: 3/27/2020 • M950290 • Tattoo: 0052 • P

WC BIG BEN 9036 P
WFR BEN 6083 P
M920021 WFR SECRET 4147 P

		Ratio
BW	88	105
AWW	742	105
ADG		
SC		
	EPD	Top%
MB	0.06	
CWT	7	
REA	0.61	
FAT	0.030	

SCC 193Y 12B PLD
WFR SALLY 8166 P
F1300944 WFR SOBE 5301 P

	CE	BW	WW	YW	Milk	MCE	Mtnl	SC	TSI
EPDs:	10.2	-0.8	24	44	6	10.3	17	1.1	189.59
Top %									

WFR 0053 P

DOB: 3/7/2020 • M950483 • Tattoo: 0053 • P

WC BIG BEN 9036 P
WFR BEN 6083 P
M920021 WFR SECRET 4147 P

		Ratio
BW	79	95
AWW	725	102
ADG		
SC		
	EPD	Top%
MB	0.14	
CWT	13	
REA	0.50	
FAT	0.026	

WFR 6201 P
WFR JANE 892 P
F1300953 WFR PATTY 656 P

	CE	BW	WW	YW	Milk	MCE	Mtnl	SC	TSI
EPDs:	13.4	-3.3	26	47	1	10.2	14	1.3	195.87
Top %									

WFR AFFINITY 0055

DOB: 2/2/2020 • M949761 • Tattoo: 0055 • P

LT RUSHMORE 8060 PLD
LT AFFINITY 6221 PLD
M880381 LT ATHENA 1247

		Ratio
BW	68	83
AWW	618	87
ADG		
SC		
	EPD	Top%
MB	0.25	
CWT	15	
REA	0.57	
FAT	0.018	

JAB RAISE YOUR GLASS 518 PLD
WFR MISS BK 8159 P
F1300934 WFR DREAMY 3151 P

	CE	BW	WW	YW	Milk	MCE	Mtnl	SC	TSI
EPDs:	6.0	-2.4	16	43	13	4.5	21	0.8	199.44
Top %									

WFR VENTURE 0056 P

DOB: 2/20/2020 • M949767 • Tattoo: 0056 • P

LT STAGECOACH 8068 PLD
LT VENTURE 3198 PLD
M835612 LT BALLET 9219 POLLED

		Ratio
BW	76	92
AWW	797	113
ADG		
SC		
	EPD	Top%
MB	0.05	
CWT	21	
REA	0.81	
FAT	0.021	

LT LANDMARK 5052 PLD
WFR LAMAR 803 P
F1300950 WFR MISS BLUE 6131 P

	CE	BW	WW	YW	Milk	MCE	Mtnl	SC	TSI
EPDs:	7.5	-1.8	38	71	8	1.0	28	0.9	215.96
Top %									

WFR AFFINITY 0057 P

DOB: 2/1/2020 • M950481 • Tattoo: 0057 • P

LT RUSHMORE 8060 PLD
LT AFFINITY 6221 PLD
M880381 LT ATHENA 1247

		Ratio
BW	72	87
AWW	718	101
ADG		
SC		
	EPD	Top%
MB	0.18	
CWT	11	
REA	0.59	
FAT	0.023	

JAB DRINK IN MY HAND 157 PLD
WFR LADY DRINK 840 P ET
EF1302441 WFR RINEZ 9175 P

	CE	BW	WW	YW	Milk	MCE	Mtnl	SC	TSI
EPDs:	5.4	-2.1	24	51	11	4.7	23	0.8	202.23
Top %									



WFR Affinity 0057 P, pedigree left.

WFR AFFINITY 0058 P

DOB: 2/4/2020 • M949753 • Tattoo: 0058 • P

LT RUSHMORE 8060 PLD
LT AFFINITY 6221 PLD
M880381 LT ATHENA 1247

		Ratio
BW	96	114
AWW	682	96
ADG		
SC		
	EPD	Top%
MB	0.20	
CWT	15	
REA	0.60	
FAT	0.024	

JAB DRINK IN MY HAND 157 PLD
WFR LADY DRINK 877 P
F1300925 WFR LADY EDGE 059

	CE	BW	WW	YW	Milk	MCE	Mtnl	SC	TSI
EPDs:	9.2	0.0	20	48	14	5.1	24	0.9	200.02
Top %									



WFR AFFINITY 0061 P

DOB: 2/5/2020 • M949762 • Tattoo: 0061 • P

LT RUSHMORE 8060 PLD
 LT AFFINITY 6221 PLD
 M880381 LT ATHENA 1247

WFR TANK 6030 P
 WFR LADY TANK 8168 P
 F1300936 WFR LADY WIFI 4132 P

		Ratio
BW	68	83
AWW	716	101
ADG		
SC		
	EPD	Top%
MB	0.22	
CWT	18	
REA	0.56	
FAT	0.024	

	CE	BW	WW	YW	Milk	MCE	Mtnl	SC	TSI
EPDs:	6.5	-3.0	30	61	12	2.4	27	0.8	212.85
Top %									



Lot 0061

WFR Affinity 0061 P, pedigree left.

WFR VENTURE 0062 P

DOB: 2/5/2020 • M949769 • Tattoo: 0062 • P

LT STAGECOACH 8068 PLD
 LT VENTURE 3198 PLD
 M835612 LT BALLET 9219 POLLED

LT LANDMARK 5052 PLD
 WFR LADY RIVA 855 P
 F1301429 WFR DRINK'S RIVA 5323 P

		Ratio
BW	98	116
AWW	760	107
ADG		
SC		
	EPD	Top%
MB	0.00	
CWT	21	
REA	0.84	
FAT	0.019	

	CE	BW	WW	YW	Milk	MCE	Mtnl	SC	TSI
EPDs:	6.4	1.3	34	64	10	1.5	26	1.0	207.01
Top %									

WFR VENTURE 0063 P

DOB: 1/30/2020 • M949758 • Tattoo: 0063 • P

LT STAGECOACH 8068 PLD
 LT VENTURE 3198 PLD
 M835612 LT BALLET 9219 POLLED

LT RUSHMORE 8060 PLD
 WFR LADY RUSH 845 P
 F1300932 WFR MISS BENNIE 206 P

		Ratio
BW	75	90
AWW	732	103
ADG		
SC		
	EPD	Top%
MB	0.07	
CWT	25	
REA	0.70	
FAT	0.034	

	CE	BW	WW	YW	Milk	MCE	Mtnl	SC	TSI
EPDs:	10.0	-3.0	34	66	10	4.7	27	1.3	212.78
Top %									

WFR AFFINITY 0065 P

DOB: 1/29/2020 • M949756 • Tattoo: 0065 • P

LT RUSHMORE 8060 PLD
 LT AFFINITY 6221 PLD
 M880381 LT ATHENA 1247

WFR TANK 6030 P
 WFR LADY TANK 8145 P
 F1300931 WFR BLUEBELLE 203 P

		Ratio
BW	66	80
AWW	699	99
ADG		
SC		
	EPD	Top%
MB	0.23	
CWT	15	
REA	0.56	
FAT	0.030	

	CE	BW	WW	YW	Milk	MCE	Mtnl	SC	TSI
EPDs:	7.1	-3.5	28	59	12	4.0	26	0.8	212.22
Top %									

WFR AFFINTIY 0066 TW P

DOB: 1/31/2020 • M949770 • Tattoo: 0066 • P

LT RUSHMORE 8060 PLD
 LT AFFINITY 6221 PLD
 M880381 LT ATHENA 1247

JAB DRINK IN MY HAND 157 PLD
 WFR LADY DRINK 876 P
 F1300919 WFR MISSY 731 P

		Ratio
BW	62	100
AWW	630	100
ADG		
SC		
	EPD	Top%
MB	0.16	
CWT	11	
REA	0.62	
FAT	0.019	

	CE	BW	WW	YW	Milk	MCE	Mtnl	SC	TSI
EPDs:	5.0	-0.5	20	41	11	3.3	21	0.7	191.54
Top %									

WFR AFFINITY 0067 P

DOB: 1/30/2020 • M949764 • Tattoo: 0067 • P

LT RUSHMORE 8060 PLD
 LT AFFINITY 6221 PLD
 M880381 LT ATHENA 1247

RBM LONG DISTANCE C73
 WFR MISS LD 8141 P
 F1300947 WFR SOBE 5170 P

		Ratio
BW	80	96
AWW	714	101
ADG		
SC		
	EPD	Top%
MB	0.19	
CWT	11	
REA	0.57	
FAT	0.021	

	CE	BW	WW	YW	Milk	MCE	Mtnl	SC	TSI
EPDs:	7.2	-1.5	28	57	14	2.4	28	0.8	207.53
Top %									

WFR AFFINITY 0068 P

DOB: 2/10/2020 • M949768 • Tattoo: 0068 • P

LT RUSHMORE 8060 PLD
 LT AFFINITY 6221 PLD
 M880381 LT ATHENA 1247

LT LANDMARK 5052 PLD
 WFR LAMAR 807 P
 F1300957 WFR DAISY 609 P

		Ratio
BW	92	109
AWW	718	101
ADG		
SC		
	EPD	Top%
MB	0.18	
CWT	7	
REA	0.58	
FAT	0.017	

	CE	BW	WW	YW	Milk	MCE	Mtnl	SC	TSI
EPDs:	12.3	-2.0	24	50	16	-2.2	28	0.6	202.09
Top %									

CHAROLAIS BULLS

WFR AFFINITY 0069 P

DOB: 1/31/2020 • M949760 • Tattoo: 0069 • P

LT RUSHMORE 8060 PLD
LT AFFINITY 6221 PLD
M880381 LT ATHENA 1247

		Ratio
BW	71	86
AWW	701	99
ADG		
SC		
	EPD	Top%
MB	0.20	
CWT	16	
REA	0.53	
FAT	0.023	

WFR TANK 6030 P
WFR LADY TANK 8147 P
F1300933 WFR MISS BENNIE 207 P

	CE	BW	WW	YW	Milk	MCE	Mtnl	SC	TSI
EPDs:	9.4	-3.6	29	60	13	2.8	27	1.0	212.28
Top %									

WFR CASH 0085 P

DOB: 2/22/2020 • M949786 • Tattoo: 0085 • P

M&M OUTSIDER 4003 PLD
BRCHE CASHING OUT 8520 PLD ET
EM913053 CC SMOKETTE 4076 ET P

		Ratio
BW	82	92
AWW	652	100
ADG		
SC		
	EPD	Top%
MB	-0.06	
CWT	18	
REA	0.59	
FAT	0.021	

DCR MR SOLUTION W13
WFR SOSO 321 P
F1231485 WFR ROSLET 958 P

	CE	BW	WW	YW	Milk	MCE	Mtnl	SC	TSI
EPDs:	5.5	-0.9	33	58	7	4.6	24	0.7	199.37
Top %									



Lot 0087

WFR Addiction 0087 P, pedigree right.

WFR ADDICTION 0087 P

DOB: 2/29/2020 • M949773 • Tattoo: 0087 • P

SHF REHAB 8104
SHF ADDICTION 1609
M875086 SHF KBC MS DYNASTY 1411ET

		Ratio
BW	96	107
AWW	591	93
ADG		
SC		
	EPD	Top%
MB	0.10	
CWT	15	
REA	0.56	
FAT	0.007	

SLS RINGO 501
WFR RHINESTONE LADY 081 P
F1160634 WFR LADY EVE 562 P

	CE	BW	WW	YW	Milk	MCE	Mtnl	SC	TSI
EPDs:	-1.1	2.6	25	42	8	2.2	20	0.6	184.91
Top %									

WFR AUTHORITY 0091 P

DOB: 2/26/2020 • M949795 • Tattoo: 0091 • P

LHD CHOTEAU B1669 P
LT AUTHORITY 7229 PLD
M898189 LT KATY 4273 PLD

		Ratio
BW	80	89
AWW	651	100
ADG		
SC		
	EPD	Top%
MB	0.19	
CWT	14	
REA	0.64	
FAT	0.014	

GERRARD MONTEZUMA 6T
WFR ZOOM 438 P
F1231506 WFR EVE 567 P

	CE	BW	WW	YW	Milk	MCE	Mtnl	SC	TSI
EPDs:	7.3	-1.5	22	37	10	8.9	21	0.9	187.15
Top %									

WFR ADDICTION 0092 P

DOB: 3/5/2020 • M949772 • Tattoo: 0092 • P

SHF REHAB 8104
SHF ADDICTION 1609
M875086 SHF KBC MS DYNASTY 1411ET

		Ratio
BW	72	80
AWW	601	95
ADG		
SC		
	EPD	Top%
MB	0.06	
CWT	18	
REA	0.60	
FAT	0.009	

WFR 6034 P
WFR JANE 076 P
F1160632 WFR LATANYA 773 P

	CE	BW	WW	YW	Milk	MCE	Mtnl	SC	TSI
EPDs:	5.9	-2.9	30	51	10	2.5	25	0.8	196.90
Top %									

WFR CASH 0095

DOB: 2/25/2020 • M949805 • Tattoo: 0095 • P

M&M OUTSIDER 4003 PLD
BRCHE CASHING OUT 8520 PLD ET
EM913053 CC SMOKETTE 4076 ET P

		Ratio
BW	76	85
AWW	647	99
ADG		
SC		
	EPD	Top%
MB	0.03	
CWT	13	
REA	0.53	
FAT	0.025	

HCR BLUEGRASS 0049 PLD
WFR BLUE 451 P
F1231536 WFR DREAMER 299 P

	CE	BW	WW	YW	Milk	MCE	Mtnl	SC	TSI
EPDs:	9.4	-2.4	33	56	1	8.1	17	0.6	200.29
Top %									

WFR CASH 0096 P

DOB: 2/28/2020 • M949821 • Tattoo: 0096 • P

M&M OUTSIDER 4003 PLD
BRCHE CASHING OUT 8520 PLD ET
EM913053 CC SMOKETTE 4076 ET P

		Ratio
BW	94	106
AWW	669	103
ADG		
SC		
	EPD	Top%
MB	-0.05	
CWT	16	
REA	0.53	
FAT	0.016	

WC BIG BEN 9036 P
WFR LADY BEN 612 P
F1269067 WFR HOT TODDY 4130 P

	CE	BW	WW	YW	Milk	MCE	Mtnl	SC	TSI
EPDs:	10.3	-0.6	31	55	6	7.8	21	1.0	196.45
Top %									

WFR DRINK 0097 P

DOB: 2/25/2020 • M949790 • Tattoo: 0097 • P
 LT BLUEGRASS 4017 P
 JAB DRINK IN MY HAND 157 PLD
 M816822 JAB COTTON CANDY 001 POLLED

		Ratio
BW	102	114
AWW	710	109
ADG		
SC		
	EPD	Top%
MB	0.11	
CWT	17	
REA	0.75	
FAT	0.013	

WFR SURVIVOR 2030 P
 WFR LADY SURVIVOR 357 P
 F1231496 WFR YOLI 1188 P

	CE	BW	WW	YW	Milk	MCE	Mtnl	SC	TSI
EPDs:	3.8	3.1	28	54	15	10.5	29	0.8	198.00
Top %									

WFR FARGO 0098 P

DOB: 3/1/2020 • M949771 • Tattoo: 0098 • P
 SPARROWS FARGO 811U
 RBM FARGO Y111
 EM809088 HR RHINESTONE 5100

		Ratio
BW	96	107
AWW	693	110
ADG		
SC		
	EPD	Top%
MB	0.00	
CWT	29	
REA	0.78	
FAT	0.021	

OAKDALE DUKE 9003P
 WFR DELLA 042 P
 F1160615 WFR EASE 837 P

	CE	BW	WW	YW	Milk	MCE	Mtnl	SC	TSI
EPDs:	10.2	-0.1	39	75	17	6.3	36	1.0	217.28
Top %									

WFR CASH 0228 P

DOB: 4/2/2020 • M949834 • Tattoo: 0228 • P
 M&M OUTSIDER 4003 PLD
 BRICHE CASHING OUT 8520 PLD ET
 EM913053 CC SMOKETTE 4076 ET P

		Ratio
BW	95	109
AWW	732	112
ADG		
SC		
	EPD	Top%
MB	0.05	
CWT	18	
REA	0.58	
FAT	0.019	

SC BRIDGER 1218 P
 WFR SUZIE 771 P
 F1285506 WFR LADY EDGE 059

	CE	BW	WW	YW	Milk	MCE	Mtnl	SC	TSI
EPDs:	7.9	0.6	28	53	13	5.7	27	0.6	196.79
Top %									

WFR 0229 P

DOB: 3/29/2020 • M949794 • Tattoo: 0229 • P
 CCC WC RESOURCE 417 P
 BROBERG'S RESOURCE E10
 M914663 BROBERG'S MS BEN C12

		Ratio
BW	92	103
AWW	566	87
ADG		
SC		
	EPD	Top%
MB	0.11	
CWT	17	
REA	0.68	
FAT	0.014	

JAB DRINK IN MY HAND 157 PLD
 WFR HOT TODDY 4941 P
 F1231505 WFR WENDY 552 P

	CE	BW	WW	YW	Milk	MCE	Mtnl	SC	TSI
EPDs:	7.6	-0.2	18	34	12	11.5	20	0.7	182.76
Top %									

WFR RHINESTONE 0237 P

DOB: 3/27/2020 • M949781 • Tattoo: 0237 • P
 RBM TR RHINESTONE Z38
 RBM RHINESTONE E175
 EM893037 TR MS WYLIE FIRE 0761X ET

		Ratio
BW	85	98
AWW	580	89
ADG		
SC		
	EPD	Top%
MB	0.09	
CWT	15	
REA	0.68	
FAT	0.011	

JAB DRINK IN MY HAND 157 PLD
 WFR LADY DRINK 765 P ET
 EF1300753 WFR POLLY 886 P

	CE	BW	WW	YW	Milk	MCE	Mtnl	SC	TSI
EPDs:	3.2	0.7	18	41	14	4.9	23	0.6	189.77
Top %									

WFR TANK 0241 P

DOB: 3/30/2020 • M949804 • Tattoo: 0241 • P
 LT PATRIOT 4004 PLD
 WFR TANK 6030 P
 M919876 WFR SYDNEY 721 P

		Ratio
BW	86	96
AWW	687	105
ADG		
SC		
	EPD	Top%
MB	0.06	
CWT	21	
REA	0.66	
FAT	0.017	

JAB DRINK IN MY HAND 157 PLD
 WFR HOT TODDY 4107 P
 F1231523 WFR PRISCILLA 058 P

	CE	BW	WW	YW	Milk	MCE	Mtnl	SC	TSI
EPDs:	6.6	-0.3	31	59	16	8.9	32	0.7	203.44
Top %									

WFR 0252 P

DOB: 4/5/2020 • M950292 • Tattoo: 0252 • P
 WC BIG BEN 9036 P
 WFR BEN 6083 P
 M920021 WFR SECRET 4147 P

		Ratio
BW	78	94
AWW	700	99
ADG		
SC		
	EPD	Top%
MB	0.09	
CWT	7	
REA	0.56	
FAT	0.021	

SCC 193Y 12B PLD
 WFR SALLY 8306 P
 F1300920 WFR LADY MAX 926 P

	CE	BW	WW	YW	Milk	MCE	Mtnl	SC	TSI
EPDs:	10.3	-1.6	26	45	1	10.0	14	1.0	191.34
Top %									



Pet 0241
 WFR Tank 0241 P, pedigree above.

CHAROLAIS BULLS

WFR CASH 0260 P

DOB: 4/13/2020 • M949831 • Tattoo: 0260 • P

M&M OUTSIDER 4003 PLD
BRCH CASHING OUT 8520 PLD ET
EM913053 CC SMOKETTE 4076 ET P

		Ratio
BW	90	104
AWW	675	104
ADG		
SC		
	EPD	Top%
MB	-0.05	
CWT	11	
REA	0.61	
FAT	0.008	

SCHRADER'S OUTCROSS 362A
WFR SALLY 7159 P
F1285502 WFR PAULETTE 0154 P

	CE	BW	WW	YW	Milk	MCE	Mtnl	SC	TSI
EPDs:	5.0	0.3	25	42	12	3.7	25	0.5	183.67
Top %									

WFR GOLD RUSH 0261 P

DOB: 4/10/2020 • M949778 • Tattoo: 0261 • P

LT RUSHMORE 8060 PLD
WFR GOLD RUSH 7200 P
M924810 WFR SOBE 581 P

		Ratio
BW	70	78
AWW	614	97
ADG		
SC		
	EPD	Top%
MB	0.12	
CWT	14	
REA	0.42	
FAT	0.014	

WC BIG BEN 9036 P
WFR MISS BENNIE 206 P
F1196384 WFR LADY EDGE 063 P

	CE	BW	WW	YW	Milk	MCE	Mtnl	SC	TSI
EPDs:	11.0	-4.2	27	52	12	6.7	26		202.07
Top %									

WFR 0262 P

DOB: 4/15/2020 • M949830 • Tattoo: 0262 • P

LT LANDMARK 5052 PLD
WFR LANDMARK 8083 PLD
M948651 WFR RANDI 626 P

		Ratio
BW	91	105
AWW	661	101
ADG		
SC		
	EPD	Top%
MB	-0.03	
CWT	15	
REA	0.82	
FAT	0.008	

SCHRADER'S OUTCROSS 362A
WFR SALLY 790 P
F1285501 WFR VIVA 925 P

	CE	BW	WW	YW	Milk	MCE	Mtnl	SC	TSI
EPDs:	8.7	-0.9	25	44	18	3.1	30	0.3	188.83
Top %									

WFR RHINESTONE 0264 P

DOB: 4/13/2020 • M949836 • Tattoo: 0264 • P

RBM TR RHINESTONE Z38
RBM RHINESTONE E175
EM893037 TR MS WYLIE FIRE 0761X ET

		Ratio
BW	100	115
AWW	701	108
ADG		
SC		
	EPD	Top%
MB	0.18	
CWT	16	
REA	0.54	
FAT	0.023	

LT RUSHMORE 8060 PLD
WFR RUSSET 735 P
F1285569 WFR MISS SUPER S 142 P

	CE	BW	WW	YW	Milk	MCE	Mtnl	SC	TSI
EPDs:	6.3	1.8	28	53	17	3.2	31	0.7	198.62
Top %									

WFR 0265 P

DOB: 4/10/2020 • M949833 • Tattoo: 0265 • P

LT LANDMARK 5052 PLD
WFR LANDMARK 8083 PLD
M948651 WFR RANDI 626 P

		Ratio
BW	78	90
AWW	626	96
ADG		
SC		
	EPD	Top%
MB	0.07	
CWT	14	
REA	0.76	
FAT	0.008	

SC BRIDGER 1218 P
WFR SUZIE 799 P
F1285504 WFR MONA 089 P

	CE	BW	WW	YW	Milk	MCE	Mtnl	SC	TSI
EPDs:	7.4	-1.4	25	47	14	4.4	27	0.4	195.05
Top %									

WFR RHINESTONE 0266 P

DOB: 4/5/2020 • M949825 • Tattoo: 0266 • P

RBM TR RHINESTONE Z38
RBM RHINESTONE E175
EM893037 TR MS WYLIE FIRE 0761X ET

		Ratio
BW	84	97
AWW	666	102
ADG		
SC		
	EPD	Top%
MB	0.11	
CWT	17	
REA	0.59	
FAT	0.017	

LT RUSHMORE 8060 PLD
WFR RUSSET 7144 P
F1285488 WFR BENNIE 585 P

	CE	BW	WW	YW	Milk	MCE	Mtnl	SC	TSI
EPDs:	10.6	-2.3	25	49	17	5.2	30	0.8	197.85
Top %									

WFR 0271 P

DOB: 4/11/2020 • M949803 • Tattoo: 0271 • P

CCC WC RESOURCE 417 P
BROBERG'S RESOURCE E10
M914663 BROBERG'S MS BEN C12

		Ratio
BW	78	87
AWW	667	102
ADG		
SC		
	EPD	Top%
MB	0.19	
CWT	19	
REA	0.68	
FAT	0.016	

WFR MCDREAMY 9024 P
WFR IZZIE 4101 P
F1231518 WFR POLLY 893 P

	CE	BW	WW	YW	Milk	MCE	Mtnl	SC	TSI
EPDs:	10.4	-3.4	29	50	10	9.8	25	0.7	200.18
Top %									



WFR Rhinestone 0266 P, pedigree above

WFR 0272 P

DOB: 5/3/2020 • M949857 • Tattoo: 0272 • P

LT LANDMARK 5052 PLD
WFR LANDMARK 8083 PLD
M948651 WFR RANDI 626 P

MXS FAT BURGER 539C
WFR JUICY 7131 P
F1285570 WFR JUDY 3175 P

		Ratio
BW	86	96
AWW	718	111
ADG		
SC		
	EPD	Top%
MB	0.02	
CWT	14	
REA	0.77	
FAT	0.005	

	CE	BW	WW	YW	Milk	MCE	Mtnl	SC	TSI
EPDs:	5.0	-0.4	31	53	13	3.1	28	0.3	197.01
Top %									

WFR TANK 0278 P

DOB: 4/19/2020 • M949820 • Tattoo: 0278 • P

LT PATRIOT 4004 PLD
WFR TANK 6030 P
M919876 WFR SYDNEY 721 P

SCC 193Y 12B PLD
WFR RANDI 626 P
F1269037 WFR HENRETTA 323 P

		Ratio
BW	90	102
AWW	709	109
ADG		
SC		
	EPD	Top%
MB	0.04	
CWT	20	
REA	0.71	
FAT	0.019	

	CE	BW	WW	YW	Milk	MCE	Mtnl	SC	TSI
EPDs:	7.6	-0.6	33	59	15	7.8	32	0.7	202.39
Top %									

WFR SNIPER 0283 P

DOB: 5/1/2020 • M949846 • Tattoo: 0283 • P

SF JOURNEYMAN 1239 P
JASR SNIPER 26B PLD
M854302 JASR LONDON 18Z PLD

LT SILVER EDGE 2289 PLD
WFR LADY EDGE 059
F1160626 WFR MISS IMPRESS 202 P

		Ratio
BW	84	90
AWW	768	118
ADG		
SC		
	EPD	Top%
MB	0.09	
CWT	20	
REA	0.59	
FAT	0.019	

	CE	BW	WW	YW	Milk	MCE	Mtnl	SC	TSI
EPDs:	7.6	-1.9	32	58	10	9.0	26	0.6	203.81
Top %									

WFR SNIPER 0284 P

DOB: 5/5/2020 • M949844 • Tattoo: 0284 • P

SF JOURNEYMAN 1239 P
JASR SNIPER 26B PLD
M854302 JASR LONDON 18Z PLD

JAB DRINK IN MY HAND 157 PLD
WFR DRINK'S RIVA 5323 P
F1300837 WFR RIVA 8160 P

		Ratio
BW	102	110
AWW	701	108
ADG		
SC		
	EPD	Top%
MB	0.06	
CWT	17	
REA	0.68	
FAT	0.014	

	CE	BW	WW	YW	Milk	MCE	Mtnl	SC	TSI
EPDs:	1.1	3.2	33	57	7	8.4	23	0.8	197.64
Top %									

WFR 0286 P

DOB: 4/21/2020 • M949822 • Tattoo: 0286 • P

CCC WC RESOURCE 417 P
BROBERG'S RESOURCE E10
M914663 BROBERG'S MS BEN C12

WC BIG BEN 9036 P
WFR LADY BEN 611 P
F1269069 WFR IZZIE 428 P

		Ratio
BW	74	84
AWW	682	105
ADG		
SC		
	EPD	Top%
MB	0.16	
CWT	18	
REA	0.60	
FAT	0.010	

	CE	BW	WW	YW	Milk	MCE	Mtnl	SC	TSI
EPDs:	12.8	-4.5	30	52	9	11.4	24	1.1	202.80
Top %									

WFR 02361 P

DOB: 3/26/2020 • M949812 • Tattoo: 02361 • P

CCC WC RESOURCE 417 P
BROBERG'S RESOURCE E10
M914663 BROBERG'S MS BEN C12

KEYS ALL STATE 149X
WFR ALL 5166 P TW
F1251286 WFR RIVA 8161 P

		Ratio
BW	80	89
AWW	618	95
ADG		
SC		
	EPD	Top%
MB	0.14	
CWT	19	
REA	0.74	
FAT	0.012	

	CE	BW	WW	YW	Milk	MCE	Mtnl	SC	TSI
EPDs:	2.1	-1.8	31	52	3	5.4	19	1.0	199.51
Top %									



Lot 0286

WFR 0286 P, pedigree above.



PROFIT. REPEAT.

Generate repeated profits with the industry's most-favored female.

Independent research from a decade of data collection showed Red Angus-sired heifers commanded \$66/head more than females of other breed types. That's nearly \$5,300 on a single load of replacement heifers to boost profits on your operation.

Visit RedAngus.org for details on the industry's most-favored female.

A large red Angus cow stands in a field of tall, dry grass, looking towards the camera. She has a yellow ear tag with the number 4141 and the text 'RED ANGUS' on it. Two calves are in the foreground, one facing left and one facing right, both grazing on the grass. The background shows a clear blue sky and rolling hills.

RED ANGUS
RANCH TESTED. RANCHER TRUSTED.

REF LSF BRA NO WORRIES 4657B

DOB: 1/31/2014 • 1689588 • P

BECKTON NEBULA P P707
BROWN JYJ REDEMPTION Y1334
JYJ MS JOLENE W16

LSF JBOB EXPECTATION 6034S
LSF CRYSTAL R5154 X0105
WFR SYDNEY 721 P

		Ratio
BW		
AWW		
ADG		
SC		
	EPD	Top%
MB	0.70	
CWT	19	
REA	0.09	
FAT	0.01	

HB	GM	CED	BW	WW	YW	MILK	ME	HPG	CEM	STAY	
EPDs:	77	56	15	-4.8	61	106	29	1	12	6	15



REF TC FEEL GOOD 1617

DOB: 1/15/2017 • 3841577 • P

WEBR DR. PHIL
WEBR DR. FEEL GOOD 1112
PFFR MS NYACK 237

NBAR HAMLEY S913
TC MS MONTE 117Z
TC MS MONTE 18X

		Ratio
BW		
AWW		
ADG		
SC		
	EPD	Top%
MB	0.27	
CWT	13	
REA	-0.24	
FAT	0.02	

HB	GM	CED	BW	WW	YW	MILK	ME	HPG	CEM	STAY	
EPDs:	73	32	11	0.6	40	69	28	-4	8	6	17

TC Feel Good 1617 was purchased from TC Reds in the 2018 sale. The first progeny out of 1617 are featured in the sale this year.

Semen is available!



REF OVER DRAFT PICK 413D

DOB: 1/19/2016 • 3548524 • P

BROWN JYJ REDEMPTION Y1334
CT RED QUEST 4010
C-T BLOCKANA 2023

SLGN YARDMASTER 125Y
OVER BLUSH 413B
C-BAR ABIGRACE X13

		Ratio
BW		
AWW		
ADG		
SC		
	EPD	Top%
MB	0.74	
CWT	52	
REA	0.27	
FAT	0.01	

HB	GM	CED	BW	WW	YW	MILK	ME	HPG	CEM	STAY	
EPDs:	69	79	17	-3.5	82	135	27	7	10	10	12



REF RED ACC LEGACY 20C

DOB: 2/12/2015 • 3802308 • P

RED LAZY MC EYE SPY 64Y
WPRA LEGACY A-314
WPRA EVERLEDA ENTENSE 610

RED ANDERSONS CURVE BENDER 1
RED ANDERSONS TIBBIE 132X
RED FBAC TIBBIE 10H

		Ratio
BW		
AWW		
ADG		
SC		
	EPD	Top%
MB	0.32	
CWT	26	
REA	0.25	
FAT	0.02	

HB	GM	CED	BW	WW	YW	MILK	ME	HPG	CEM	STAY	
EPDs:	109	18	10	0.7	72	101	26	-14	11	7	16



RED ANGUS REFERENCE SIRES

REF LSF SRR EXCEPTIONAL 546C

DOB: 4/9/2015 • 1751111 • P

BECKTON NEBULA P P707
BROWN JYJ REDEMPTION Y1334
JYJ MS JOLENE W16

MESSMER PACKER S008
LSF WIDELOAD R5014 U8061
LSF WIDELOAD N3195 R5014

		Ratio
BW		
AWW		
ADG		
SC		
		EPD
		Top%
MB	0.82	
CWT	19	
REA	0.17	
FAT	0.02	

HB	GM	CED	BW	WW	YW	MILK	ME	HPG	CEM	STAY	
EPDs:	99	60	16	-4.4	58	94	20	3	13	9	18



REF ROJAS RIOJA 6052

DOB: 2/3/2016 • 3525231 • P

SIX MILE RED SAKIC 8325
PZC TMAS FIRESTORM 1800 ET
GT CITA 4060

VGW GAME PLAN 816
SIX MILE LAKOTA 112Y
SIX MILE LAKOTO 16W

		Ratio
BW		
AWW		
ADG		
SC		
		EPD
		Top%
MB	0.18	
CWT	3	
REA	-0.40	
FAT	-0.02	

HB	GM	CED	BW	WW	YW	MILK	ME	HPG	CEM	STAY	
EPDs:	80	-20	10	-0.4	61	80	28	-8	13	2	16



REF WFRA 5023

DOB: 3/12/2015 • 3521501 • P

BIEBER MAKIN HAY 9913
PAR NUFF SED 003Y
PAR PRINCESS S1012

WFRA ZAPPER 9212
WFRA ZANDRA 488
WFRA MISS BEA 9221

		Ratio
BW		
AWW		
ADG		
SC		
		EPD
		Top%
MB	0.29	
CWT	11	
REA	0.13	
FAT	0.00	

HB	GM	CED	BW	WW	YW	MILK	ME	HPG	CEM	STAY	
EPDs:	81	15	14	-2.3	60	91	19	5	8	10	16

REF TC TRANSCENDENCE 2637

DOB: 2/17/2017 • 3841579 • P

RED RAINBOW PROTOCOL 22Z
RED RAINBOW TRANSCENDENCE 29B
RED RAINBOW LOIS 33R

NBAR HAMLEY S913
TC RACHEAL 59B
RRA RACHEL 746 220

		Ratio
BW		
AWW		
ADG		
SC		
		EPD
		Top%
MB	0.21	
CWT	11	
REA	0.01	
FAT	0.01	

HB	GM	CED	BW	WW	YW	MILK	ME	HPG	CEM	STAY	
EPDs:	75	13	12	-0.6	55	84	26	-8	9	6	15

REF WFRA CREATOR 5030

DOB: 2/22/2015 • 3521456 • P

TR COLT 45 UT806
C-BAR EVOLUTION 107Y
LGS ABBY 689S

RED FINE LINE MULBERRY 26P
WFRA MILLEY 032
WFRA LADY ROCKET 7125

		Ratio
BW		
AWW		
ADG		
SC		
		EPD
		Top%
MB	0.20	
CWT	32	
REA	0.10	
FAT	0.03	

HB	GM	CED	BW	WW	YW	MILK	ME	HPG	CEM	STAY	
EPDs:	91	39	14	-2.6	63	108	23	7	15	7	17

REF RAML CINCH 8600

DOB: 1/10/2018 • 3927815 • P

LSF SAGA 1040Y
PIE CINCH 4126
TKP BONNE BEL 110

HXC CONQUEST 4405P
RAML CHEROKEE MAIDEN 600
WDZ SRV FASHION 1135

		Ratio
BW		
AWW		
ADG		
SC		
		EPD
		Top%
MB	0.35	
CWT	24	
REA	-0.15	
FAT	0.01	

HB	GM	CED	BW	WW	YW	MILK	ME	HPG	CEM	STAY	
EPDs:	64	32	13	-2.3	68	104	26	-1	11	6	12

WFRA 034

03-22-2020
WFRA034

A100% AR
4388693

C-BAR EVOLUTION 107Y
WFRA CREATOR 50303521456
WFRA MILLEY 03Z

RED CROWFOOT OLE'S OSCAR
WFRA OLE 2191567489
WFRA DANA 027

MP 103 Dam Age: 01-21-2012

Ratio		Data
Act. BW	89	72
Adj. WW		574
Adj. YW		
SC	Frame	
EPD		Data
MARB	0.44	39
YG	0.09	69
CW	16	64
REA	0.03	66
FAT	0.03	74
ADG	0.25	29
DMI	1.48	57
		0.0

	ProS	HB	GM	CED	BW	WW	YW	MILK	ME	HPG	CEM	STAY
EPD	127	87	41	14	-2.8	59	100	24	6	12	8	17
Top%	31	29	45	34	30	50	40	64	86	30	34	26



WFRA 034, pedigree left.

WFRA LEGACY 0036

03-16-2020
WFRA0036

B99.9% AR 0.1%
4388685

WFRA LEGACY A-314
RED ACC LEGACY 20C3802308
RED ANDERSON'S TIBBIE 132X

PAR NUFF SED 003Y
WFRA 7884387359
WFRA MOLLY 4181

MP 100 Dam Age: 03-24-2017

Ratio		Data
Act. BW	106	82
Adj. WW	100	621
Adj. YW		
SC	Frame	
EPD		Data
MARB	0.29	78
YG	0.05	49
CW	23	36
REA	0.10	47
FAT	0.01	38
ADG	0.18	80
DMI	1.57	66
		0.0

	ProS	HB	GM	CED	BW	WW	YW	MILK	ME	HPG	CEM	STAY
EPD	115	96	18	12	-1.0	65	93	23	-5	12	9	16
Top%	52	13	89	60	65	30	56	66	17	40	18	43

WFRA XTR 0038

03-25-2020
WFRA0038

B99.9% AR 0.1%
4388701

FLYING W XTRA 111X
KLEIN XTRA 160S-82E3863097
RED FINE LINE MAIDGALE 160S

WFRA 007
WFRA MOLLY 41813578789
HLH MS JULES 2010 4013

MP 95 Dam Age: 04-23-2014

Ratio		Data
Act. BW	110	89
Adj. WW	94	582
Adj. YW		
SC	Frame	
EPD		Data
MARB	0.20	94
YG	0.06	55
CW	13	77
REA	-0.05	81
FAT	0.01	42
ADG	0.18	79
DMI	1.23	33
		0.0

	ProS	HB	GM	CED	BW	WW	YW	MILK	ME	HPG	CEM	STAY
EPD	109	96	12	10	0.0	55	84	20	-2	12	8	17
Top%	63	13	95	84	82	67	75	90	29	30	27	24

WFRA DRAFT PICK 0039

02-27-2020
WFRA0039

A100% AR
4388661

C-T RED QUEST 4010
OVER DRAFT PICK 413D3548524
OVER BLUSH 413B

LMG GILLS COMBO 7577
WFRA GENA 0951425938
WFRA CHEYENNE 750

MP 97 Dam Age: 04-03-2010

Ratio		Data
Act. BW	100	80
Adj. WW		605
Adj. YW		
SC	Frame	
EPD		Data
MARB	0.61	12
YG	0.11	81
CW	34	9
REA	0.14	40
FAT	0.02	60
ADG	0.26	23
DMI	1.88	89
		0.0

	ProS	HB	GM	CED	BW	WW	YW	MILK	ME	HPG	CEM	STAY
EPD	128	68	61	14	-2.9	66	108	23	6	10	9	13
Top%	30	73	11	28	28	24	22	67	88	66	18	76

WFRA DRAFT PICK 0040

03-02-2020
WFRA0040

A100% AR
4388671

C-T RED QUEST 4010
OVER DRAFT PICK 413D3548524
OVER BLUSH 413B

RED FINE LINE MULBERRY 26P
WFRA MILLEY 0321425933
WFRA LADY ROCKET 7125

MP 97 Dam Age: 03-06-2010

Ratio		Data
Act. BW	80	64
Adj. WW		555
Adj. YW		
SC	Frame	
EPD		Data
MARB	0.55	20
YG	0.12	83
CW	33	11
REA	0.10	48
FAT	0.02	61
ADG	0.27	17
DMI	1.94	92
		0.0

	ProS	HB	GM	CED	BW	WW	YW	MILK	ME	HPG	CEM	STAY
EPD	138	82	56	14	-2.2	67	111	24	5	12	8	15
Top%	17	40	17	28	40	22	18	58	85	34	26	50

WFRA 0041

03-25-2020
WFRA0041

A100% AR
4388703

PAR NUFF SED 003Y
WFRA 50233521501
WFRA ZANDRA 488

HXC JACKHAMMER 8800U
WFRA JACKIE 4163578751
WFRA VALLERIE 093

MP 105 Dam Age: 02-24-2014

Ratio		Data
Act. BW	111	90
Adj. WW	109	675
Adj. YW		
SC	Frame	
EPD		Data
MARB	0.37	57
YG	0.06	52
CW	16	65
REA	0.02	67
FAT	0.01	42
ADG	0.22	52
DMI	1.62	71
		0.0

	ProS	HB	GM	CED	BW	WW	YW	MILK	ME	HPG	CEM	STAY
EPD	104	80	24	12	-0.8	65	100	18	4	10	8	16
Top%	71	47	80	60	70	30	39	96	78	76	35	40

WFRA FEEL GOOD 0042

03-24-2020
WFRA0042

A100% AR
4388695

WEBR DR. FEEL GOOD 1112
TC FEEL GOOD 16173841577
TC MS MONTE 117Z

PAR NUFF SED 003Y
WFRA MISS DEMI 71454050604
WFRA DEMI 534

MP 94 Dam Age: 01-31-2017

Ratio		Data
Act. BW	95	74
Adj. WW	86	533
Adj. YW		
SC	Frame	
EPD		Data
MARB	0.32	68
YG	0.11	80
CW	21	44
REA	-0.11	91
FAT	0.01	33
ADG	0.20	66
DMI	1.30	39
		0.0

	ProS	HB	GM	CED	BW	WW	YW	MILK	ME	HPG	CEM	STAY
EPD	123	89	34	15	-2.7	53	85	26	0	9	9	17
Top%	38	25	61	17	32	73	71	41	40	85	10	23

RED ANGUS BULLS

WFRA 0043

03-24-2020
WFRA0043

PAR NUFF SED 003Y
WFRA 50233521501
WFRA ZANDRA 488

PZC TMAS MR KING ROB 1959 ET
WFRA PRINCESS 41383578815
WFRA CHEYENNE 750

MP 100 Dam Age: 03-30-2014

A100% AR 4388697		Ratio		Data
Act. BW	104			84
Adj. WW	107			666
Adj. YW				
SC	Frame			
EPD		Top%	Data	
MARB	0.27	81		
YG	0.01	26		
CW	11	82		
REA	0.07	55		
FAT	0.01	37		
ADG	0.20	68		0.0
DMI	1.58	68		

	ProS	HB	GM	CED	BW	WW	YW	MILK	ME	HPG	CEM	STAY
EPD	82	64	17	15	-3.4	55	86	22	6	9	10	13
Top%	94	79	90	19	20	69	70	75	87	82	5	76

WFRA FEEL GOOD 0044

02-26-2020
WFRA0044

WEBR DR. FEEL GOOD 1112
TC FEEL GOOD 16173841577
TC MS MONTE 117Z

HXC 2213Z
WFRA IRA 4153578745
WFRA HOPE 0265

MP 100 Dam Age: 03-01-2014

A100% AR 4388657		Ratio		Data
Act. BW	119			96
Adj. WW	101			625
Adj. YW				
SC	Frame			
EPD		Top%	Data	
MARB	0.30	76		
YG	0.07	59		
CW	15	69		
REA	-0.05	82		
FAT	0.01	39		
ADG	0.21	63		0.0
DMI	1.01	19		

	ProS	HB	GM	CED	BW	WW	YW	MILK	ME	HPG	CEM	STAY
EPD	98	64	34	12	-0.2	49	82	24	1	8	6	15
Top%	79	79	60	62	78	84	77	65	49	93	64	51

WFRA FEEL GOOD 0046

03-14-2020
WFRA0046

WEBR DR. FEEL GOOD 1112
TC FEEL GOOD 16173841577
TC MS MONTE 117Z

PZC TMAS MR KING ROB 1959 ET
WFRA PRINCESS 61563582083
WFRA GENA 095

MP 102 Dam Age: 03-26-2016

A100% AR 4388683		Ratio		Data
Act. BW	93			73
Adj. WW	99			613
Adj. YW				
SC	Frame			
EPD		Top%	Data	
MARB	0.30	76		
YG	0.10	74		
CW	16	63		
REA	-0.06	84		
FAT	0.02	55		
ADG	0.20	66		0.0
DMI	1.17	29		

	ProS	HB	GM	CED	BW	WW	YW	MILK	ME	HPG	CEM	STAY
EPD	89	58	31	12	-1.2	50	82	24	2	9	8	13
Top%	89	87	66	50	60	83	77	57	57	87	33	78



WFRA Feel Good 0046, pedigree left.

WFRA FEEL GOOD 0047

03-16-2020
WFRA0047

WEBR DR. FEEL GOOD 1112
TC FEEL GOOD 16173841577
TC MS MONTE 117Z

1DRA CONQUEST 1019
WFRA 61523582097
WFRA MISS CHANNY123

MP 101 Dam Age: 03-26-2016

A100% AR 4388687		Ratio		Data
Act. BW	111			88
Adj. WW	103			640
Adj. YW				
SC	Frame			
EPD		Top%	Data	
MARB	0.35	61		
YG	0.10	76		
CW	12	80		
REA	-0.11	91		
FAT	0.02	64		
ADG	0.19	71		0.0
DMI	0.88	14		

	ProS	HB	GM	CED	BW	WW	YW	MILK	ME	HPG	CEM	STAY
EPD	101	69	32	13	-2.0	50	81	25	0	9	7	15
Top%	75	71	64	41	44	82	79	53	41	86	39	56



WFRA Feel Good 0047, pedigree left.

WFRA LEGACY 0048

03-21-2020
WFRA0048

WFRA LEGACY A-314
RED ACC LEGACY 20C3802308
RED ANDERSON'S TIBBIE 132X

1DRA CONQUEST 1019
WFRA MISS CONQUEST 7544050646
WFRA MISS CHANNY123

MP 107 Dam Age: 03-20-2017

A100% AR 4388691		Ratio		Data
Act. BW	105			81
Adj. WW	117			725
Adj. YW				
SC	Frame			
EPD		Top%	Data	
MARB	0.38	54		
YG	0.05	47		
CW	18	57		
REA	0.13	41		
FAT	0.02	62		
ADG	0.19	74		0.0
DMI	1.36	45		

	ProS	HB	GM	CED	BW	WW	YW	MILK	ME	HPG	CEM	STAY
EPD	110	84	26	12	-1.8	64	94	24	-5	11	7	15
Top%	61	36	78	59	48	32	53	63	17	58	37	61



WFRA CINCH 0073

03-14-2020
 WFRA0073
 PIE CINCH 4126
 RAML CINCH 86003927815
 RAML CHEROKEE MAIDEN 600

A100% AR 4388681		Ratio	Data
Act. BW	104		77
Adj. WW	105		710
Adj. YW			
SC	Frame		
		EPD	Top%
MARB	0.32	68	
YG	0.08	65	
CW	19	54	
REA	-0.02	75	
FAT	0.01	42	
ADG	0.20	69	0.0
DMI	1.34	43	

RED ACC LEGACY 20C
 WFRA LADY LEGACY 8334385843
 WFRA TONY 538

MP 102 Dam Age: 03-18-2018

	ProS	HB	GM	CED	BW	WW	YW	MILK	ME	HPG	CEM	STAY
EPD	108	85	23	12	-1.0	64	96	26	-4	11	8	15
Top%	64	34	82	52	64	31	49	38	19	50	34	62



WFRA Cinch 0073, pedigree left.

WFRA NO WORRIES 0074

01-24-2020
 WFRA0074
 BROWN JYJ REDEMPTION Y1334
 LSF BRA NO WORRIES 4657B1689588
 LSF CRYSTAL R5154 X0105

A100% AR 4388647		Ratio	Data
Act. BW			35
Adj. WW			585
Adj. YW			
SC	Frame		
		EPD	Top%
MARB	0.47	32	
YG	0.04	41	
CW	21	42	
REA	0.10	47	
FAT	0.01	32	
ADG	0.26	23	0.0
DMI	1.87	89	

RED CHOPPER K HADANERO 427C
 WFRA 81294387013
 WFRA IRA 415

MP Dam Age: 03-26-2018

	ProS	HB	GM	CED	BW	WW	YW	MILK	ME	HPG	CEM	STAY
EPD	111	68	43	10	-0.6	64	106	26	-1	11	4	14
Top%	58	72	39	80	72	32	27	42	34	53	91	63

WFRA CINCH 0075

DOB: 3/5/2020 • PENDING • P
 PIE CINCH 4126
 RAML CINCH 8600
 RAML CHEROKEE MAIDEN 600

PAR NUFF SAID 003Y
 WFRA LADY NS 829
 WFRA EVE 529

	Ratio	
BW	70	
AWW	708	
ADG		
SC		
	EPD	Top%
MB		
CWT		
REA		
FAT		

HB	GM	CED	BW	WW	YW	MILK	ME	HPG	CEM	STAY
----	----	-----	----	----	----	------	----	-----	-----	------

EPDs:

WFRA CINCH 0078

03-24-2020
 WFRA0078
 PIE CINCH 4126
 RAML CINCH 86003927815
 RAML CHEROKEE MAIDEN 600

B99.9% AR 0.1% 4388699		Ratio	Data
Act. BW	96		70
Adj. WW	102		690
Adj. YW			
SC	Frame		
		EPD	Top%
MARB	0.28	81	
YG	0.10	74	
CW	19	51	
REA	-0.08	86	
FAT	0.01	37	
ADG	0.20	64	0.0
DMI	1.36	45	

WFRA 5036
 WFRA EVA 83004385839
 WFRA ADDISON 900

MP 101 Dam Age: 06-02-2018

	ProS	HB	GM	CED	BW	WW	YW	MILK	ME	HPG	CEM	STAY
EPD	104	79	25	14	-3.1	59	92	25	2	13	8	15
Top%	71	47	80	28	24	51	58	47	58	20	33	61



WFRA Cinch 0078, pedigree left.

WFRA CINCH 0081

02-29-2020
 WFRA0081
 PIE CINCH 4126
 RAML CINCH 86003927815
 RAML CHEROKEE MAIDEN 600

RED ACC LEGACY 20C
 WFRA LADY A 81854385831
 WFRA DEEDRA 5151

MP 103 Dam Age: 04-05-2018

A100% AR 4388665		Ratio	Data
Act. BW	111		82
Adj. WW	107		725
Adj. YW			
SC	Frame		
		EPD	Top%
MARB	0.34	64	
YG	0.09	70	
CW	20	49	
REA	-0.03	79	
FAT	0.01	43	
ADG	0.20	66	0.0
DMI	1.37	46	

	ProS	HB	GM	CED	BW	WW	YW	MILK	ME	HPG	CEM	STAY
EPD	105	80	25	13	-2.2	65	97	26	-3	11	7	14
Top%	69	46	78	45	42	30	47	43	25	46	42	67



RED ANGUS BULLS

WFRA NO WORRIES 0082

02-07-2020 A100% AR 4388653

WFRA0082

BROWN JYJ REDEMPTION Y1334
LSF BRA NO WORRIES 4657B1689588
LSF CRYSTAL R5154 X0105

RED SOO LINE MOMENTUM 7051
WFRA MOMO 8214385811
WFRA JABESH 156

MP 99 Dam Age: 02-22-2018

		Ratio		Data	
Act. BW	92	66			
Adj. WW	97	656			
Adj. YW					
SC	Frame				
		EPD	Top%	Data	
MARB	0.56	17			
YG	0.06	54			
CW	14	71			
REA	-0.04	79			
FAT	0.01	37			
ADG	0.22	54	0.0		
DMI	1.62	71			

ProS	HB	GM	CED	BW	WW	YW	MILK	ME	HPG	CEM	STAY	
EPD	115	75	40	12	-3.1	58	93	25	-2	14	6	14
Top%	52	57	47	57	24	56	55	54	32	13	74	67



WFRA No Worries 0082, pedigree left.

WFRA EXCEPTIONAL 0204

02-22-2020 A100% AR 4388655

WFRA0204

BROWN JYJ REDEMPTION Y1334
LSF SRR EXCEPTIONAL 5464C1751111
LSF WIDELOAD R5014 U8061

BROWN JYJ REDEMPTION Y1334
WFRA DEMI 5343582682
WFRA VALLERIE 093

MP 103 Dam Age: 02-18-2015

		Ratio		Data	
Act. BW	72	58			
Adj. WW	96	596			
Adj. YW					
SC	Frame				
		EPD	Top%	Data	
MARB	0.63	9			
YG	0.07	60			
CW	20	49			
REA	0.01	71			
FAT	0.01	39			
ADG	0.23	42	0.0		
DMI	1.66	74			

ProS	HB	GM	CED	BW	WW	YW	MILK	ME	HPG	CEM	STAY	
EPD	155	102	53	15	-4.1	57	95	23	2	12	9	19
Top%	5	7	20	17	12	58	51	67	60	29	18	9

WFRA FEEL GOOD 0205

03-04-2020 A100% AR 4388673

WFRA0205

WEBR DR. FEEL GOOD 1112
TC FEEL GOOD 16173841577
TC MS MONTE 117Z

PZC TMAS MR KING ROB 1959 ET
WFRA PRINCESS 6653585546
WFRA MAKIN BABIES 971

MP 99 Dam Age: 03-07-2016

		Ratio		Data	
Act. BW	114	90			
Adj. WW	96	599			
Adj. YW					
SC	Frame				
		EPD	Top%	Data	
MARB	0.27	82			
YG	0.09	69			
CW	18	55			
REA	-0.05	82			
FAT	0.01	41			
ADG	0.20	67	0.0		
DMI	1.23	34			

ProS	HB	GM	CED	BW	WW	YW	MILK	ME	HPG	CEM	STAY	
EPD	89	58	31	13	-1.8	50	82	26	2	9	8	13
Top%	89	87	67	38	50	82	77	36	57	89	19	81

WFRA EXCEPTIONAL 0207

02-29-2020 A100% AR 4388667

WFRA0207

BROWN JYJ REDEMPTION Y1334
LSF SRR EXCEPTIONAL 5464C1751111
LSF WIDELOAD R5014 U8061

WMC PICASSO
WFRA MARTHA 1661474352
WFRA HONEY 7103

MP 109 Dam Age: 03-11-2011

		Ratio		Data	
Act. BW	103	82			
Adj. WW	102	633			
Adj. YW					
SC	Frame				
		EPD	Top%	Data	
MARB	0.61	11			
YG	0.01	26			
CW	3	95			
REA	-0.02	75			
FAT	0.01	42			
ADG	0.15	88	0.0		
DMI	1.20	31			

ProS	HB	GM	CED	BW	WW	YW	MILK	ME	HPG	CEM	STAY	
EPD	111	81	30	13	-2.6	52	77	20	0	9	8	17
Top%	58	43	69	45	33	78	84	91	47	81	31	31

WFRA TESLA 0209

02-28-2020 A100% AR 4388663

WFRA0209

GMRA TRILOGY 0226
GMRA TESLA 62143538390
GMRA ANGIE ROSE 448

PZC TMAS MR KING ROB 1959 ET
WFRA BEA 31661653172
WFRA NORA 026

MP 95 Dam Age: 04-12-2013

		Ratio		Data	
Act. BW	111	90			
Adj. WW	95	590			
Adj. YW					
SC	Frame				
		EPD	Top%	Data	
MARB	0.44	38			
YG	0.04	40			
CW	21	44			
REA	0.20	28			
FAT	0.02	62			
ADG	0.24	39	0.0		
DMI	1.80	85			

ProS	HB	GM	CED	BW	WW	YW	MILK	ME	HPG	CEM	STAY	
EPD	111	70	40	14	-3.1	60	98	25	8	11	10	14
Top%	60	68	46	22	24	48	44	53	95	59	5	72

WFRA FEEL GOOD 0211

03-05-2020 A100% AR 4388679

WFRA0211

WEBR DR. FEEL GOOD 1112
TC FEEL GOOD 16173841577
TC MS MONTE 117Z

BECKTON NEBULA M045
WFRA NEBIE 4693578787
WFRA CD 296

MP 97 Dam Age: 01-18-2014

		Ratio		Data	
Act. BW	87	70			
Adj. WW	93	578			
Adj. YW					
SC	Frame				
		EPD	Top%	Data	
MARB	0.26	84			
YG	0.15	94			
CW	4	94			
REA	-0.28	99			
FAT	0.03	85			
ADG	0.18	78	0.0		
DMI	0.76	9			

ProS	HB	GM	CED	BW	WW	YW	MILK	ME	HPG	CEM	STAY	
EPD	103	83	20	14	-2.8	42	70	23	-3	10	7	18
Top%	72	38	87	26	30	94	90	69	24	61	51	20

WFRA TESLA 0212

03-03-2020 A100% AR 4388669

WFRA0212

GMRA TRILOGY 0226
GMRA TESLA 62143538390
GMRA ANGIE ROSE 448

1DRA CONQUEST 1019
WFRA DEEDRA 51513582736
WFRA ADDISON 900

MP 98 Dam Age: 04-18-2015

		Ratio		Data	
Act. BW	78	62			
Adj. WW	96	597			
Adj. YW					
SC	Frame				
		EPD	Top%	Data	
MARB	0.51	25			
YG	0.10	74			
CW	20	47			
REA	0.08	53			
FAT	0.03	82			
ADG	0.22	49	0.0		
DMI	1.53	62			

ProS	HB	GM	CED	BW	WW	YW	MILK	ME	HPG	CEM	STAY	
EPD	126	86	41	15	-3.9	63	99	28	7	12	10	15
Top%	33	32	45	18	14	35	41	21	94	35	3	49

WFRA RIOJA 0213

03-03-2020
WFRA0213
PZC TMAS FIRESTORM 1800 ET
ROJAS RIOJA 60523525231
SIX MILE LAKOTA 112Y

PZC TMAS MR KING ROB 1959 ET
WFRA PRINCESS 41423578741
WFRA MILLEY 020

MP 104 Dam Age: 03-25-2014

A100% AR 4388677		Ratio		Data
Act. BW	111			90
Adj. WW	112			698
Adj. YW				
SC		Frame		
EPD		Top%	Data	
MARB	0.19	94		
YG	0.04	42		
CW	9	87		
REA	-0.16	94		
FAT	-0.00	13		
ADG	0.15	89		0.0
DMI	1.50	59		

ProS	HB	GM	CED	BW	WW	YW	MILK	ME	HPG	CEM	STAY	
EPD	60	63	-3	12	-1.8	57	82	27	-1	12	6	13
Top%	99	81	99	56	50	59	77	33	38	26	75	82

WFRA 0214

03-04-2020
WFRA0214
WEBR DR. FEEL GOOD 1112
TC FEEL GOOD 16173841577
TC MS MONTE 117Z

PZC TMAS MR KING ROB 1959 ET
WFRA PRINCESS 4753578791
WFRA 4150

MP 96 Dam Age: 03-07-2014

A100% AR 4388675		Ratio		Data
Act. BW	104			84
Adj. WW	87			543
Adj. YW				
SC		Frame		
EPD		Top%	Data	
MARB	0.24	89		
YG	0.09	68		
CW	11	83		
REA	-0.11	91		
FAT	0.02	50		
ADG	0.19	74		0.0
DMI	1.03	20		

ProS	HB	GM	CED	BW	WW	YW	MILK	ME	HPG	CEM	STAY	
EPD	76	53	24	13	-1.3	45	75	25	1	9	8	13
Top%	96	92	81	48	58	91	86	55	53	90	35	81

WFRA TRANSCEND 0219

03-30-2020
WFRA0219
RED RAINBOW TRANSCENDENCE 29B
TC TRANSCENDENCE 26373841579
TC RACHEAL 59B

ARRC FIREFOX 204Z
WFRA FOXEY 51033582702
WFRA M 3105

MP 101 Dam Age: 03-08-2015

A100% AR 4388713		Ratio		Data
Act. BW	105			85
Adj. WW	103			640
Adj. YW				
SC		Frame		
EPD		Top%	Data	
MARB	0.25	85		
YG	-0.00	19		
CW	7	91		
REA	0.05	61		
FAT	0.01	30		
ADG	0.17	84		0.0
DMI	1.18	29		

ProS	HB	GM	CED	BW	WW	YW	MILK	ME	HPG	CEM	STAY	
EPD	89	75	14	12	-0.7	52	79	23	-2	10	6	15
Top%	89	57	94	59	70	76	81	66	28	66	60	49

WFRA 0220

04-04-2020
WFRA0220
PAR NUFF SED 003Y
WFRA 50233521501
WFRA ZANDRA 488

RAML PENDLETON 4101
WFRA STIFF DRINK 71814050664
WFRA HELEN 0184

MP 100 Dam Age: 04-09-2017

A100% AR 4388719		Ratio		Data
Act. BW	92			70
Adj. WW	101			684
Adj. YW				
SC		Frame		
EPD		Top%	Data	
MARB	0.30	76		
YG	-0.01	17		
CW	9	86		
REA	0.11	45		
FAT	0.01	37		
ADG	0.22	54		0.0
DMI	1.43	52		

ProS	HB	GM	CED	BW	WW	YW	MILK	ME	HPG	CEM	STAY	
EPD	109	88	21	14	-2.3	58	93	24	2	9	9	17
Top%	63	28	85	27	38	55	55	61	61	81	13	27

WFRA 0223

03-30-2020
WFRA0223
PAR NUFF SED 003Y
WFRA 50233521501
WFRA ZANDRA 488

C-BAR EVOLUTION 107Y
WFRA EVE 6613582117
WFRA DEULAH 195

MP 101 Dam Age: 02-24-2016

A100% AR 4388711		Ratio		Data
Act. BW	110			88
Adj. WW	104			646
Adj. YW				
SC		Frame		
EPD		Top%	Data	
MARB	0.20	93		
YG	0.02	30		
CW	16	65		
REA	0.11	47		
FAT	0.01	35		
ADG	0.23	46		0.0
DMI	1.52	62		

ProS	HB	GM	CED	BW	WW	YW	MILK	ME	HPG	CEM	STAY	
EPD	100	80	21	13	-1.8	59	96	21	6	11	8	16
Top%	76	47	86	40	48	51	49	87	86	53	23	42



WFRA 0220, pedigree above.

WFRA 0224

04-01-2020
WFRA0224
PAR NUFF SED 003Y
WFRA 50233521501
WFRA ZANDRA 488

SILVEIRAS MISSION NEXUS 1378
WFRA LADY NEXUS 6623582339
WFRA AMELIA 991

MP 95 Dam Age: 02-26-2016

A100% AR 4388715		Ratio		Data
Act. BW	96			77
Adj. WW	92			574
Adj. YW				
SC		Frame		
EPD		Top%	Data	
MARB	0.33	65		
YG	-0.00	20		
CW	12	78		
REA	0.08	53		
FAT	0.00	22		
ADG	0.22	52		0.0
DMI	1.65	73		

ProS	HB	GM	CED	BW	WW	YW	MILK	ME	HPG	CEM	STAY	
EPD	97	72	25	15	-3.7	58	93	21	4	9	10	15
Top%	80	64	79	19	17	57	55	84	79	86	7	62

WFRA CINCH 0245

04-05-2020
WFRA0245
PIE CINCH 4126
RAML CINCH 86003927815
RAML CHEROKEE MAIDEN 600

BROWN JYJ REDEMPTION Y1334
WFRA MISS LUCY 8384385799
WFRA LUCY 802

MP 96 Dam Age: 02-17-2018

A100% AR 4388721		Ratio		Data
Act. BW	93			68
Adj. WW	91			612
Adj. YW				
SC		Frame		
EPD		Top%	Data	
MARB	0.45	37		
YG	0.09	69		
CW	17	60		
REA	-0.13	93		
FAT	0.00	22		
ADG	0.22	52		0.0
DMI	1.38	47		

ProS	HB	GM	CED	BW	WW	YW	MILK	ME	HPG	CEM	STAY	
EPD	113	76	37	14	-3.7	60	96	26	0	11	7	14
Top%	56	56	53	22	17	47	49	42	39	45	40	64

RED ANGUS BULLS

WFRA CINCH 0250

04-09-2020
WFRA0250
PIE CINCH 4126
RAML CINCH 86003927815
RAML CHEROKEE MAIDEN 600

RED SIX MILE SAKIC 832S
WFRA LADY SAKIC 8344385803
WFRA MISS NS 489

MP 102 Dam Age: 02-18-2018

A100% AR 4388729		Ratio	Data
Act. BW	98		72
Adj. WW	105		707
Adj. YW			
SC	Frame		
EPD	Top%	Data	
MARB	0.24	87	
YG	0.13	88	
CW	19	53	
REA	-0.20	97	
FAT	0.01	36	
ADG	0.19	74	0.0
DMI	1.18	29	

	ProS	HB	GM	CED	BW	WW	YW	MILK	ME	HPG	CEM	STAY
EPD	89	71	18	14	-2.6	61	91	26	1	10	8	14
Top%	88	66	89	33	33	45	60	44	52	69	26	72

WFRA LEGACY 0253

03-29-2020
WFRA0253
WPRA LEGACY A-314
RED ACC LEGACY 20C3802308
RED ANDERSON'S TIBBIE 132X

1DRA CONQUEST 1019
WFRA PAM'S QUEST 71804050666
WFRA PAM 945

MP 95 Dam Age: 04-12-2017

A100% AR 4388709		Ratio	Data
Act. BW	89		68
Adj. WW	88		544
Adj. YW			
SC	Frame		
EPD	Top%	Data	
MARB	0.37	56	
YG	0.03	37	
CW	17	60	
REA	0.14	38	
FAT	0.02	56	
ADG	0.17	81	0.0
DMI	1.46	55	

	ProS	HB	GM	CED	BW	WW	YW	MILK	ME	HPG	CEM	STAY
EPD	102	81	21	11	-1.1	64	92	26	-5	10	7	15
Top%	73	43	85	74	62	33	58	42	18	74	48	58

WFRA TRANSEND 0296

05-21-2020
WFRA0296
RED RAINBOW TRANSENDENCE 298
TC TRANSENDENCE 26373841579
TC RACHEAL 59B

C-BAR EVOLUTION 107Y
WFRA EVE 4183578825
WFRA PAM 945

MP 103 Dam Age: 02-27-2014

A100% AR 4388737		Ratio	Data
Act. BW	113		91
Adj. WW	97		654
Adj. YW			
SC	Frame		
EPD	Top%	Data	
MARB	0.19	94	
YG	0.04	43	
CW	17	61	
REA	0.08	53	
FAT	0.01	47	
ADG	0.20	67	0.0
DMI	1.30	39	

	ProS	HB	GM	CED	BW	WW	YW	MILK	ME	HPG	CEM	STAY
EPD	90	72	18	13	-1.4	59	91	27	-1	11	7	14
Top%	88	64	90	46	56	52	60	35	37	57	49	67



WFRA 0296, pedigree left.

WFRA FIRESTORM 0297

04-24-2020
WFRA0297
PZC TMAS FIRESTORM 1800 ET
WFRA MR FIRESTORM 80304050798
WFRA VALLERIE 070

PAR NUFF SED 003Y
WFRA LADY NS 6153582245
WFRA IRA 419

MP 99 Dam Age: 01-29-2016

A100% AR 4388735		Ratio	Data
Act. BW	100		80
Adj. WW	108		731
Adj. YW			
SC	Frame		
EPD	Top%	Data	
MARB	0.19	95	
YG	0.03	35	
CW	13	74	
REA	-0.05	83	
FAT	-0.00	13	
ADG	0.19	74	0.0
DMI	1.43	52	

	ProS	HB	GM	CED	BW	WW	YW	MILK	ME	HPG	CEM	STAY
EPD	89	80	9	13	-1.6	59	89	25	2	11	8	15
Top%	89	46	96	38	53	52	64	49	58	61	19	54



WFRA Firestorm 0297, pedigree left.

RED ANGUS 2021 AVERAGE EPDS

HB	GM	CED	BW	WW	YW	ADG	DMI	MILK	ME	HPG	CEM	STAY
77	39	12	-1.8	59	94	0.22	1.37	25	0	11	7	15
MARB	YG	CW	REA	FAT								
0.41	0.05	20	0.11	0.02								

RED ANGUS GUIDE TO EPDS

HERDBUILDER (HB) The probability of developing profitable cowherd traits while maximizing the value of marketed progeny

GRIDMASTER (GM) The probability to increase the value of marketed calves

CALVING EASE DIRECT (CED) The probability of calves being born unassisted out of 2-year-old dams

BIRTH WEIGHT (BW) Difference in weight for progeny at birth

WEANING WEIGHT (WW) Difference in weight for progeny at 205 days of age

YEARLING WEIGHT (YW) Difference in weight for progeny at 365 days of age

AVERAGE DAILY GAIN (ADG) Difference in daily gain between 205 and 365 days of age

DRY MATTER INTAKE (DMI) Difference in feed intake for animals during the post-weaning growth period

MILK Difference in weight of a daughter's calved due to the maternal environment provided by the dam

MAINTENANCE ENERGY (ME) Difference in maintenance requirements for mature females

HEIFER PREGNANCY (HPG) Probability of a female conceiving and calving at 2 years of age

CALVING EASE MATERNAL (CEM) The ability for daughters to calve unassisted at 2 years of age

STAYABILITY (STAY) The probability of a female remaining productive in a herd until 6 years of age

MARBLING (MARB) Difference in carcass marbling scores

YIELD GRADE (YG) Difference in USDA yield grade scores

CARCASS WEIGHT (CW) Difference in hot carcass weight

RIB EYE AREA (REA) Difference in carcass rib eye area between the 12th and 13th rib

BACK FAT (BF) Difference in carcass fat depth between the 12th and 13th rib

Ranch Tested. Rancher Trusted.
Red Angus

YOUTH ALERT!

We will be offering the top end of our 2021 heifer and steer prospects this fall in a private treaty bid-off sale at the ranch in October. This year's exciting selections are just starting to hit the ground running and are looking impressive. Watch for sale information on our website and social media.

Past Club Calf Sale Features



118 - Here I Am steer



112 - Man Among Boys Steer



384 - Man Among Boys Heifer

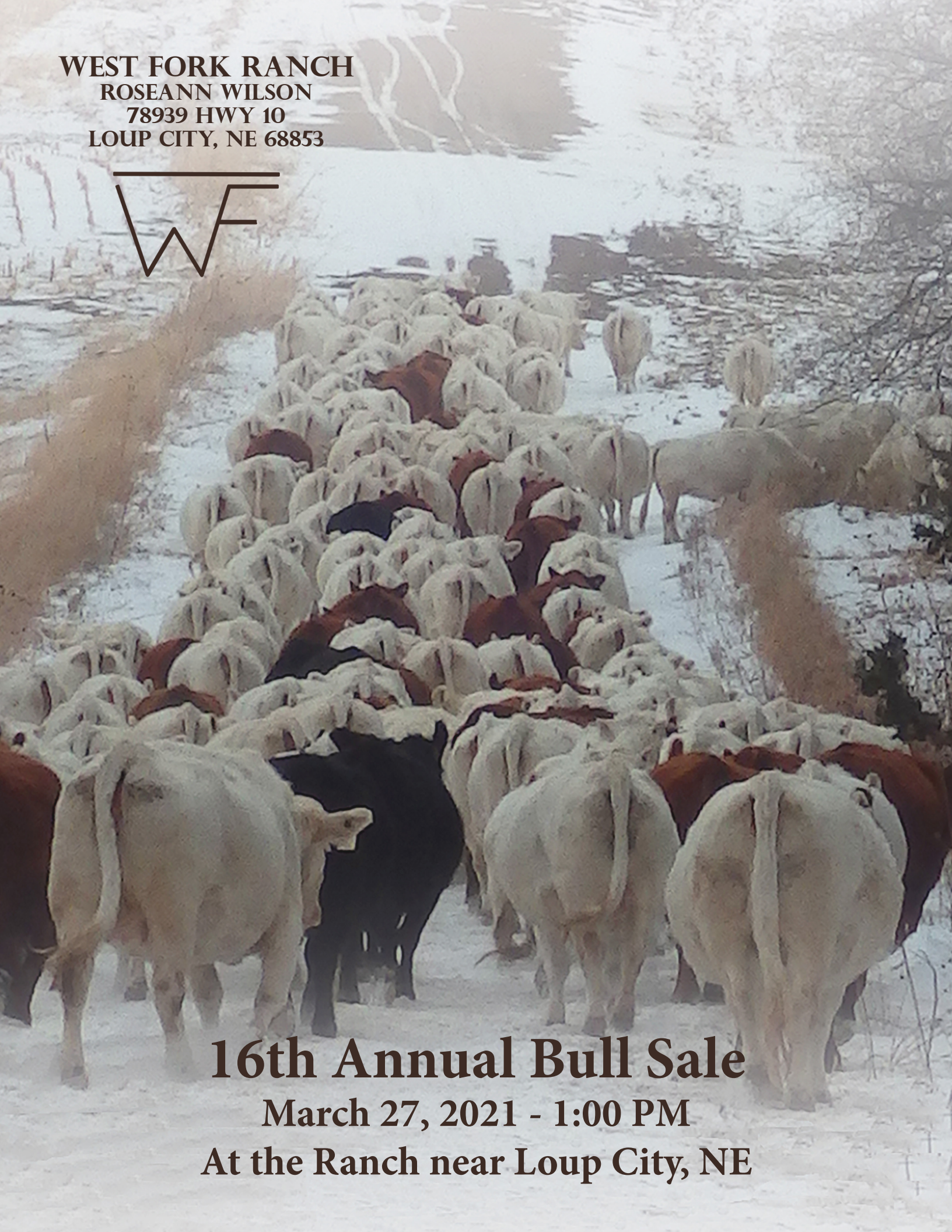


4150 - Man Among Boys Steer



2105 - Drink In My Hand Heifer

WEST FORK RANCH
ROSEANN WILSON
78939 HWY 10
LOUP CITY, NE 68853



16th Annual Bull Sale
March 27, 2021 - 1:00 PM
At the Ranch near Loup City, NE