

# DIES & INSERTS

Keystone

KRM

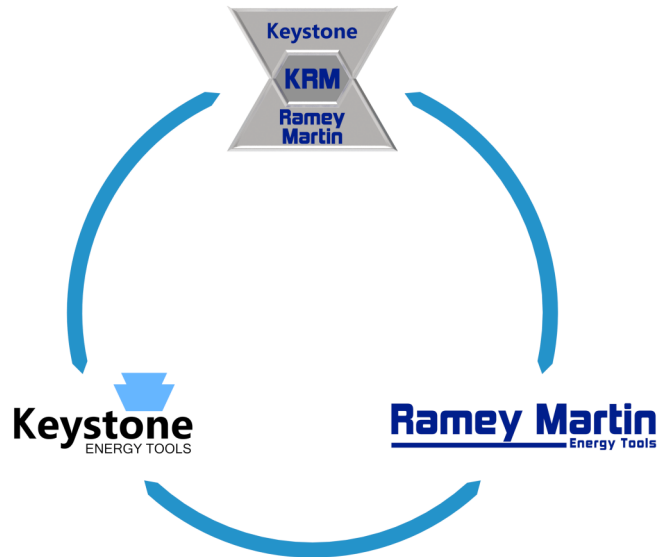
Ramey  
Martin

*"GRIPPING TUBULARS ACROSS THE GLOBE"*



Quality Delivered.

## ABOUT US



**Keystone Ramey Martin (KRM)** was founded in 2015 as a distribution center for tools manufactured by Keystone & Ramey Martin.

### A Strategic Vision

KRM was a joint vision of the founders of Keystone Energy Tools and Ramey Martin Energy Tools, Joe Ramey, Jake Ramey, and Mark St. Martin. They envisioned offering inventory from both companies in strategic locations to better serve you.

### Providing Unsurpassed Customer Service

KRM exist to serve customers in the O&G Industry with unsurpassed quality and service, and tools Made In the U.S.A.

### Timing is Critical

KRM knows that "Timing is Critical". In the O&G Industry "Timing is Everything."

Understanding this was the impetus for founding KRM. Both Keystone and Ramey Martin both understand this principle. KRM aims to service you with same-day deliveries.

### Equipped with Expertise and Product Knowledge

KRM provides knowledge, experience, and incomparable service; a trio rarely found among tool manufacturers today.

## TABLE OF CONTENTS

DESCRIPTION	PAGE NUMBER
ABOUT US—COMPANY INFORMATION	2
TABLE OF CONTENTS	3
USAGE INFORMATION	4
ELEVATOR Y SERIES TYPE INSERTS	5-6
BJ YC THRU 1000 TON INSERTS	7-9
VARCO TYPE INSERTS	10-11
VARCO BUTTON TYPE INSERTS	12-13
DU TYPE INSERTS	14-15
CI & UCS LINER INSERTS	15
3-1/2" TS-100 INSERTS	16
XP & LD TYPE INSERTS	17
RMET XD-750 SLIP TYPE INSERTS	18
CAVINS FULL CIRCLE INSERTS	19-20
CAVINS TYPE B	19
CAVINS TYPE C	20
OIL COUNTRY TYPE E INSERTS	21
KET DUAL TOOL SLIP TYPE INSERTS	22
WOOLLEY A & B INSERTS	23
HYDRA-RIG INSERTS	24-25
150 & 225 HYDRA-RIG	24
300 HYDRA-RIG	25
TONG DIES	26-29
5/8" TONG DIES	26
1" TONG DIES	27
1-1/4" TONG DIES	28-29
ST-80 UPPER & LOWER DIES	30
IRON ROUGHNECK DIES	31
CLINCHER TYPE WRAP AROUND & BACK-UP TONG DIES	32-33
ECKEL TYPE WRAP AROUND & BACK-UP TONG DIES	34-35
MANUAL TONG DIES K25-K70	36-39
SPECIALTY DIES	40
WIRELINE INSERTS	41
SAFETY CLAMP INSERTS	42
TRADEMARK & COPYRIGHT INFORMATION	43

## DIES & INSERT FOR *CRA TUBULARS*

Ensure Superior Performance and Compliance with **NACE MR0175/ISO 15156**:

Keystone Energy Tools is committed to providing products that adhere to the stringent guidelines outlined in NACE MR0175/ISO 15156. Our KEY GRIT dies and inserts are engineered to meet these standards, ensuring your operations are in full compliance.

**Unparalleled Corrosion Resistance:** KEY-GRIT products are engineered to withstand the harshest environments, offering exceptional resistance to pitting, service corrosion, and H<sub>2</sub>S-induced corrosion. Protect your CRA tubulars and maximize their service life.



**Mitigate Sulfide Stress Cracking (SSC) Risk:** With NACE MR0175/ISO 15156 compliance at the core of our design, KEY-GRIT dies and inserts provide the utmost protection against SSC. Minimize the potential for equipment failures and ensure the safety and integrity of your operations.



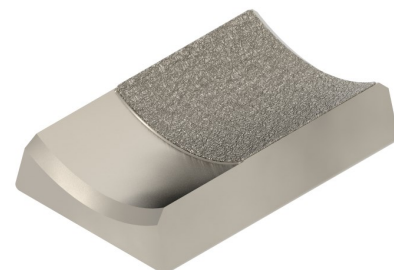
**Superior Grip and Torque Transfer:** Our advanced gripping technology ensures a secure and reliable connection during tubular running. KEY-GRIT dies and inserts optimize torque transfer, reducing the risk of slippage and minimizing the need for rework.

**Enhanced Equipment Integrity:** Say goodbye to galling, slipping, and damage associated with conventional dies and inserts. KEY-GRIT's innovative design minimizes wear and tear, increasing the overall durability and reliability of your equipment.

**Industry Proven:** Backed by years of successful applications and positive feedback from satisfied customers, KEY-GRIT dies and inserts have earned a solid reputation for their outstanding performance and reliability in challenging oil and gas environments.

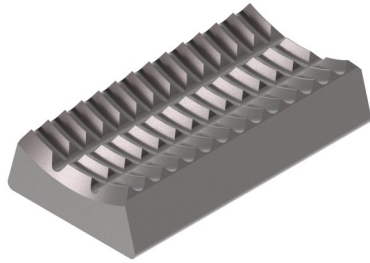
Contact Keystone Energy Tools for more information on how our KEY GRIT dies and inserts can revolutionize your CRA tubular running operations. Experience the difference in performance, reliability, and compliance.

Trust the experts. Trust **KEY-GRIT!**

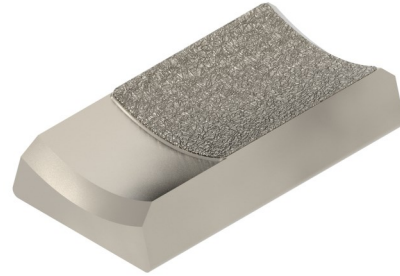




## ELEVATOR Y SERIES TYPE INSERTS



STYLE **NON-DIRECTIONAL**



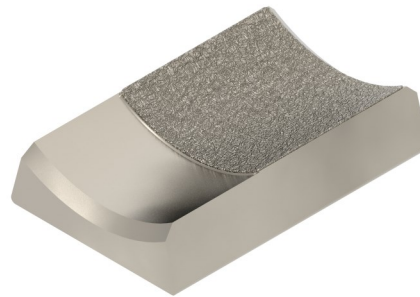
STYLE **KEY-GRIT (CRA)**

### INSERTS FOR —SERIES “LYT” (2-1/16” BODY)

Tool Size	Pipe Size	Standard	KEY-GRIT	Wt.	Ref.#
2-1/16"	2-1/16" & 2"	28772	28772-G1	0.45	28772
2-1/16"	1-1/2" (1.900)	28775	28775-G1	0.50	28775
2-1/16"	1-1/4" (1.660)	28778	28778-G1	0.63	28778
2-1/16"	1" (1.315)	28749	28749-G1	0.75	28749
2-1/16"	3/4" (1.050)	29370	29370-G1	0.75	29370



STYLE **NON-DIRECTIONAL**

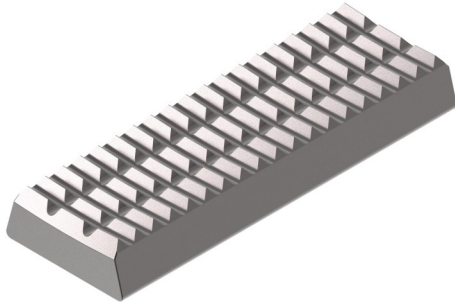


STYLE **KEY-GRIT (CRA)**

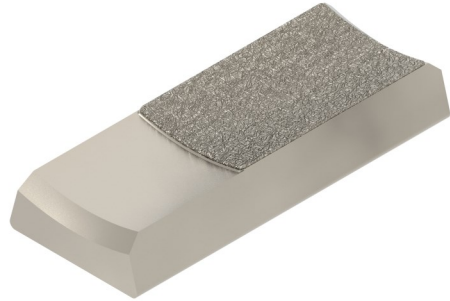
### INSERTS FOR —SERIES “MYT, YT, & HYT” (2-7/8” BODY)

Tool Size	Pipe Size	Standard	KEY-GRIT	Wt.	Ref.#
2-7/8"	2-7/8"	24773	24773-G1	0.75	24773
2-7/8"	2-3/8"	29255	29255-G1	1	29255
2-7/8"	2-1/16" & 2"	29256	29256-G1	1.13	29256
2-7/8"	1-1/2" (1.900)	29257	29257-G1	1.25	29257
2-7/8"	1-1/4" (1.660)	29258	29258-G1	1.38	29258
2-7/8"	1" (1.315)	29259	29259-G1	1.44	29259
2-7/8"	3/4" (1.050)	29259-1	29259-1-G1	1.5	29259-1

# ELEVATOR Y SERIES TYPE INSERTS



STYLE **NON-DIRECTIONAL**

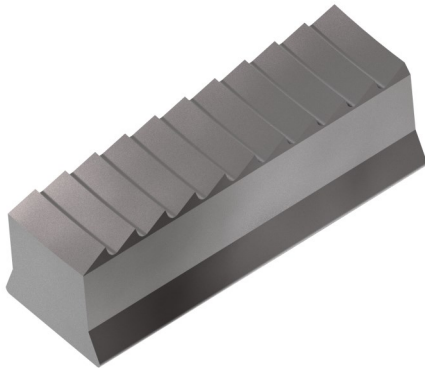


STYLE **KEY-GRIT (CRA)**

## INSERTS FOR —SERIES “YT & HYT” (3-1/2” BODY)

Tool Size	Pipe Size	Standard	KEY-GRIT	Wt.	Ref.#
3-1/2"	3-1/2"	24774-ND	24774-G1	0.5	24774
3-1/2"	2-7/8"	30358-ND	30358-G1	0.75	30358
3-1/2"	2-3/8"	30358-23-ND	30358-23-G1	0.85	30358-23

\* Available in Directional Tooth Pattern. When ordering, leave off the suffix of “ND”.



STYLE **DIRECTIONAL**

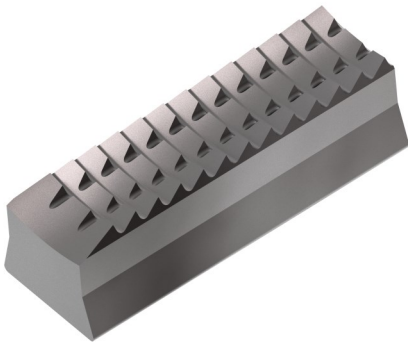


STYLE **KEY-GRIT (CRA)**

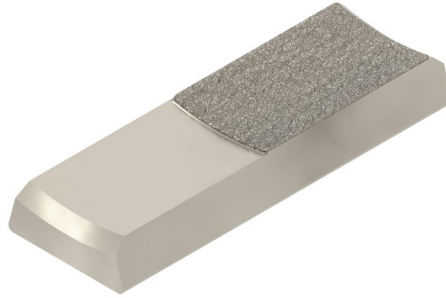
## INSERTS FOR —SERIES “HYC-XR” (9-5/8” BODY)

Tool Size	Pipe Size	Standard	KEY-GRIT	Wt.	Ref.#
9-5/8"	7-5/8"	20-103-76	20-103-76-G1	0.52	20-103-76
9-5/8"	8-5/8"	20-103-86	20-103-86-G1	0.49	20-103-86
9-5/8"	8-3/4"	20-103-875	20-103-875-G1	0.48	20-103-875
9-5/8"	9-3/8"	20-103-937	20-103-937-G1	0.29	20-103-937
9-5/8"	9-5/8"	20-103-96	20-103-96-G1	0.22	20-103-96

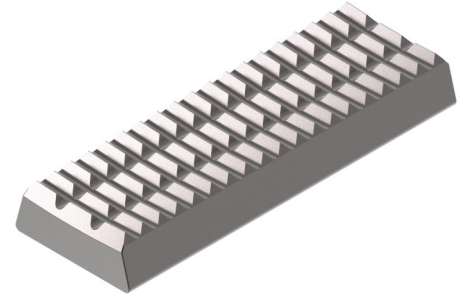
## INSERTS FOR BJ YC THRU 1000 TON



STYLE **DIRECTIONAL**



STYLE **KEY-GRIT (CRA)**



STYLE **NON-DIRECTIONAL**

Tool Size	Pipe Size	Standard	KEY-GRIT	ND	Wt.	Ref.#
3-1/2"	2-3/8"	24777	24774-G1	24774-ND	1.00	24777
3-1/2"	2-7/8"	25780	25784-G1	25784-ND	0.87	25780
3-1/2"	3-1/2"	16441	16441-G1	16441-ND	0.50	16441
4"	4"	16442	16442-G1	16442-ND	0.50	16442
4-1/2"	3-1/2"	24779	24774-G1	24774-ND	1.06	24779
4-1/2"	4"	24781	24784-G1	24784-ND	0.81	24781
4-1/2"	4-1/2"	16408	16408-G1	16408-ND	0.50	16408
5-1/2"	4-1/2"	24785	24784-G1	24784-ND	1.06	24785
5-1/2"	5"	24783	24784-G1	24784-ND	0.81	24783
5-1/2"	5-1/2"	16407	16407-G1	16407-ND	0.50	16407
7"	7"	16407	16407-G1	16407-ND	0.50	16407
7-5/8"	7"	26750	26750-G1	26750-ND	0.50	26750
7-5/8"	7-5/8"	16407-HYC	16407-HYC-G1	16407-HYC-ND	0.50	16407
7-5/8"	7-3/4"	350011	35004-G1	35004-ND		350011
8-5/8"	7-5/8"	25474	25474-G1	25474-ND	1.06	25474
8-5/8"	8-5/8"	15660	15660-G1	15660-ND	0.50	15660
9-5/8"	8-5/8"	25474	25474-G1	25474-ND	1.06	25474
9-5/8"	9-5/8"	15660	15660-G1	15660-ND	0.50	15660
10-3/4"	9-5/8"	33249	33249-G1	33249-ND	1.13	33249
11-3/4"	10-3/4"	25474	25474-G1	25474-ND	1.06	25474
12-1/2"	11-3/4"	39289	39289-G1	39289-ND	0.94	39289
13-3/8"	13-3/8"	15660	15660-G1	15660-ND	0.50	15660
14"	14"	15660	15660-G1	15660-ND	0.50	15660
16"	16"	15660	15660-G1	15660-ND	0.50	15660
20"	18-5/8"	32561	32561-G1	32561-ND	1.50	32561
20"	20"	15660	15660-G1	15660-ND	0.50	15660

\* Available with **Beveled Bottom Ends**. When ordering use the suffix **(-B)** for that style tooth pattern.

\* Available with **Beveled Top Ends**. When ordering use the suffix **(-BT)** for that style tooth pattern.

UNMATCHED KNOWLEDGE, EXPERIENCE, AND INCOMPARABLE SERVICE

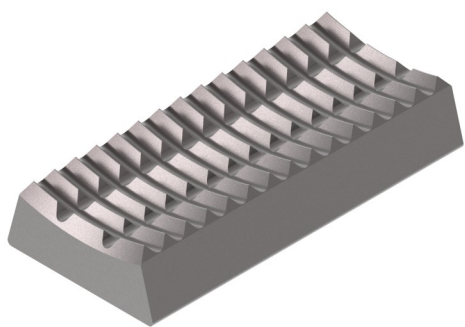
## QUANTITY'S REQ. FOR BJ YC THRU 1000 TON

Tool Size	YC	HYC	Number of Inserts Required				14" 1000 Ton
			7-5/8" 175 Ton	13-3/8" 350 Ton	10-3/4" 500 Ton	13-3/8" 500 Ton	
3-1/2"			18				
4"	16						
4-1/2"	16	24	27				
5-1/2"	16	36	27	36	45	45	
7"	24	48		48	60	60	
7-5/8"		48	45	60	75	75	
8-5/8"				60	75		
8-7/8"							108
9-5/8"				72	90	90	
10-3/4"				72	90		
10-7/8"							126
11-3/4"				72		105	
12-1/2"							144
13-3/8"				84		135	
14"							162

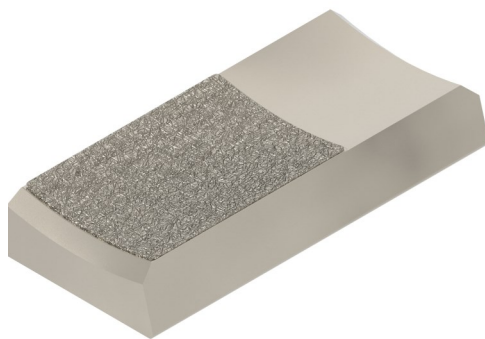
## QUANTITY'S REQ. FOR BJ YC THRU 1000 TON

Tool Size	Number of Inserts Required					
	14" 200 Ton	14" 350 Ton	14" 500 Ton	24" 750 Ton	24" 1000 Ton	24" 500 Ton
3 1/2"	12/12B					
3 1/2"	12/12B					
3 1/2"	24					
4 1/2"	16/16B					
4 1/2"	16/16B					
4 1/2"	32					
5 1/2"	16/16B	24/16B	32/16B			
5 1/2"	16/16B	24/16B	32/16B			
5 1/2"	32	40	48			
7 5/8"	24/24B	36/24B	48/24B	60/24B		
7 5/8"	24/24B	36/24B	48/24B	60/24B		
7 5/8"	48	60	72	84		
9 5/8"		48/32B	64/32B	80/32B	96/24B	
9 5/8"		48/32B	64/32B	80/32B	96/24B	
11 3/4"		60/40B	80/40B	100/40B	144/36B	
11 3/4"		100	120	140	180	
13 3/8"		100	120	140		
14"		60/40B	80/40B	100/40B	144/36B	
14"		100	120	140	180	
16"					240	180
20"					720	420
20"					300	180
24"						180

## VARCO® TYPE INSERTS



STYLE **NON-DIRECTIONAL**



STYLE **KEY-GRIT (CRA)**



STYLE **BEVELED**

Tool Size	Pipe Size	Standard	KEY-GRIT	Beveled#	Wt.	Ref.#
3-1/2"	2-3/8"	23-157	23-157-G1	23-157-B	0.87	2160
3-1/2"	2-7/8"	23-156	23-156-G1	23-156-B	0.64	2161
3-1/2"	3-1/2"	23-155	23-155-G1	23-155-B	0.42	2162
4-1/2"	3-1/2"	23-160	23-160-G1	23-160-B	0.81	2163
4-1/2"	4"	23-159	23-159-G1	23-159-B	0.61	2164
4-1/2"	4-1/2"	23-158	23-158-G1	23-158-B	0.42	2165
5"	4"	23-163	23-163-G1	23-163-B	0.81	2168
5"	4-1/2"	23-162	23-162-G1	23-162-B	0.63	2166
5"	5"	23-161	23-161-G1	23-161-B	0.42	2167
5-1/2"	4-1/2"	23-163	23-163-G1	23-163-B	0.81	2168
5-1/2"	5"	23-165	23-165-G1	23-165-B	0.61	2169
5-1/2"	5-1/2"	23-164	23-164-G1	23-164-B	0.42	2170
7"	6"	23-210	23-210-G1	23-210-B	0.82	2168
7"	6-5/8"	23-167	23-167-G1	23-167-B	0.61	2172
7"	7"	23-166	23-166-G1	23-166-B	0.42	2173
7-5/8"	6-5/8"	23-168	23-168-G1	23-168-B	0.81	2632
7-5/8"	7"	23-169	23-169-G1	23-169-B	0.64	2623
7-5/8"	7-1/8"	23-212	23-212-G1	23-212-B	0.82	2652
7-5/8"	7-5/8"	23-170	23-170-G1	23-170-B	0.61	2633

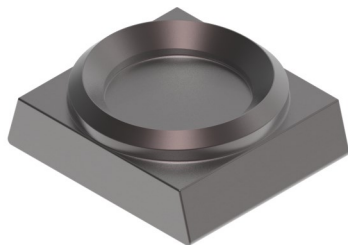


## VARCO® TYPE INSERTS

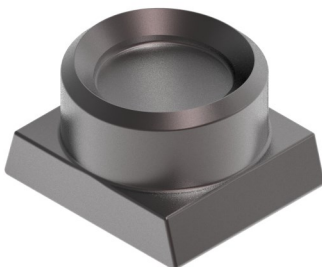
Tool Size	Pipe Size	Standard	KEY-GRIT	Beveled#	Wt.	Ref.#
7-5/8"	7-3/4"	23-186	23-186-G1	23-186-B	0.40	2649
9-5/8"	8-5/8"	23-171	23-171-G1	23-171-B	0.81	2640
9-5/8"	8-3/4"	23-176	23-176-G1	23-176-B	0.75	2650
9-5/8"	9-5/8"	23-170	23-170-G1	23-170-B	0.42	2633
9-5/8"	9-3/4" to 9-7/8"	23-186	23-186-G1	23-186-B	0.40	2649
11-3/4"	10-3/4"	23-171	23-171-G1	23-171-B	0.81	2640
11-3/4"	11-3/4"	23-172	23-172-G1	23-172-B	0.42	2637
11-3/4"	11-7/8"	23-185	23-185-G1	23-185-B	0.40	2651
13-3/8"	12-3/4"	23-173	23-173-G1	23-173-B	0.64	2636
13-3/8"	13-3/8"	23-172	23-172-G1	23-172-B	0.42	2637
13-3/8"	13-1/2"	23-184	23-184-G1	23-184-B	0.40	2649
14"	12-3/4"	23-183	23-183-G1	23-183-B	0.85	2657
14"	12-7/8"	23-178	23-178-G1	23-178-B	0.83	2656
14"	13-3/8'	23-173	23-173-G1	23-173-B	0.64	2636
14"	13-1/2"	23-182	23-182-G1	23-182-B	0.61	2652
14"	13-5/8"	23-180	23-180-G1	23-180-B	0.52	2653
14"	13-3/4"	23-181	23-181-G1	23-181-B	0.50	2655
14"	14"	23-174	23-174-G1	23-174-B	0.42	2635
16"	16"	23-174	23-174-G1	23-174-B	0.42	2635
20"	18-5/8"	23-175	23-175-G1	23-175-B	0.52	2638
20"	20"	23-174	23-174-G1	23-174-B	0.42	2635
24"	24"	23-174	23-174-G1	23-174-B	0.42	2635

\* Available with ***Beveled Bottom Ends***. When ordering use the suffix ***(-B)*** for that style tooth pattern.

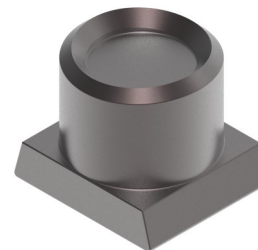
## VARCO® BUTTON TYPE INSERTS



STYLE **BASIC**



STYLE **MEDIUM**



STYLE **LARGE**

### BUTTON INSERTS FOR—"DCS" DRILL COLLAR SLIPS

Size	Slip Type	Standard	KEY-GRIT	Qty	Wt.	Ref#
3" - 4"	DCS-S	14-628	14-628-G1	49	13.00	2632
4" - 4-7/8"	DCS-S	14-620	14-620-G1	49	8.00	2634
4-1/2" - 6"	DCS-R	14-628	14-628-G1	63	16.00	2632
5-1/2" - 7"	DCS-R	14-620	14-620-G1	63	11.00	2634
5-1/2" - 7"	DCS-L	14-513	14-513-G1	88	19.00	2521
6-3/4" - 8-1/4"	DCS-L	14-630	14-630-G1	88	15.00	2633
8" - 9-1/2"	DCS-L	14-627	14-627-G1	96	16.00	2633
8-1/2" - 1"	DCS-L	14-630	14-630-G1	104	26.00	2637
9-1/4" - 11-1/4"	DCS-L	14-630	14-630-G1	112	19.00	2633
11" - 12-3/4"	DCS-L	14-625	14-625-G1	136	20.00	2639
12" - 14"	DCS-L	14-630	14-630-G1	136	22.00	2633



STYLE **KEY-GRIT (CRA)**

\* When using **KEY-GRIT Button Inserts**, the quantity of buttons required for each segment/slip is reduced by 50%.

## VARCO® BUTTON TYPE INSERTS

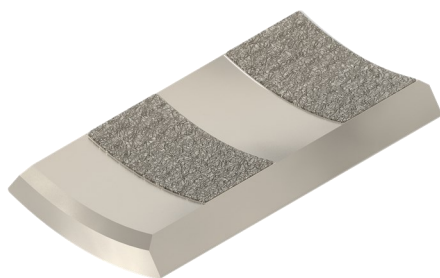
### BUTTON INSERTS FOR —"CMSXL" CASING SLIP

Size	Standard	KEY-GRIT	Qty	Wt.	Ref#
6-5/8"	14-628	14-628-G1	144	0.28	2628
7"	14-619	14-619-G1	144	0.18	2619
7-5/8"	14-630	14-630-G1	144	0.14	2630
8-5/8"	14-630	14-630-G1	156	0.14	2630
9-5/8"	14-630	14-630-G1	168	0.14	2630
10-3/4"	14-630	14-630-G1	180	0.14	2630
11-3/4"	14-627	14-627-G1	204	0.30	2627
13-3/8"	14-630	14-630-G1	216	0.14	2630
16"	14-631	14-631-G1	252	0.14	2631
18"	14-625	14-625-G1	288	0.28	2625
18-5/8"	14-626	14-626-G1	300	0.30	2626
20"	14-631	14-631-G1	312	0.14	2631
22"	14-631	14-631-G1	336	0.14	2631
24"	14-631	14-631-G1	360	0.14	2631
26"	14-631	14-631-G1	396	0.14	2631
30"	14-631	14-631-G1	444	0.14	2631

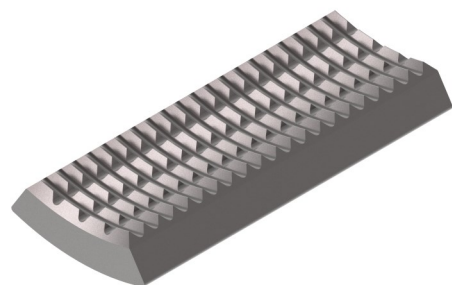
## BAASH-ROSS® DU & SLIP TYPE INSERTS



STYLE **STRANDARD**



STYLE **KEY-GRIT (CRA)**



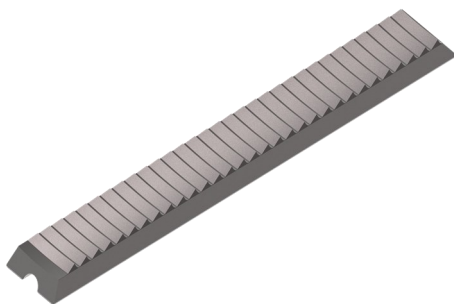
STYLE **FULL FACE**

Tool Size	Pipe Size	Standard	KEY-GRIT	Full Face	Wt.	Ref.#
4-1/2"	2-1/16"	-	03-237-G1	03-237	2.50	7613-M-82
4-1/2"	2-3/8"	03-124	03-236-G1	03-236	2.25	7613-A-82
4-1/2"	2-7/8"	03-123	03-223-G1	03-223	2.00	7613-B-82
4-1/2"	3	-	03-231-G1	03-231	1.79	-
4-1/2"	3-1/8"	-	03-230-G1	03-230	1.69	-
4-1/2"	3-1/4"	-	03-228-G1	03-228	1.60	-
4-1/2"	3-1/2"	03-122	03-227-G1	03-227	1.50	7613-C-82
4-1/2"	3-3/4"	-	03-224-G1	03-224	1.20	-
4-1/2"	4"	03-121	03-221-G1	03-221	1.00	7613-FF-81
4-1/2"	4-1/8"	-	03-219-G1	03-219	0.98	-
4-1/2"	4-1/4"	03-121-1	03-216-G1	03-216	0.95	-
4-1/2"	4-3/8"	-	03-213-G1	03-213	0.89	-
4-1/2"	4-1/2"	03-120	03-210-G1	03-210	0.75	7613-A-81
5-1/2"	3-1/2"	03-134	03-264-G1	03-264	3.09	7613-E-82
5-1/2"	3-3/4"	-	03-261-G1	03-261	2.38	-
5-1/2"	4"	03-130	03-240-G1	03-240	2.50	7613-D-81
5-1/2"	4-1/8"	-	03-255-G1	03-255	2.29	-
5-1/2"	4-1/4"	-	03-252-G1	03-252	2.23	-
5-1/2"	4-3/8"	-	03-247-G1	03-247	2.15	-
5-1/2"	4-1/2"	03-132	03-249-G1	03-249	2.00	7613-E-81
5-1/2"	4-3/4"	-	03-246-G1	03-246	2.00	7613-F-81
5-1/2"	5"	03-131	03-243-G1	03-243	1.50	7613-G-81
5-1/2"	5-1/2"	03-130	03-240-G1	03-240	1.00	7613-H-81
5-1/2"	5-3/4"	-	03-241-G1	03-241	0.95	-

## BAASH-ROSS® DU & SLIP TYPE INSERTS

Tool Size	Pipe Size	Standard	KEY-GRIT	Full Face	Wt.	Ref.#
7"	5-1/2"	A03-142	A03-287-G1	A03-287	3.12	7613-Z-81
7"	5-3/4"	A03-145	A03-286-G1	A03-286	3.58	7613-BB-81
7"	5-7/8"	A03-146	A03-285-G1	A03-285	3.58	-
7"	6"	A03-147	A03-283-G1	A03-283	1.25	7613-CC-81
7"	6-5/8"	A03-141	A03-281-G1	A03-281	1.75	7613-DD-81
7"	7"	A03-140	A03-280-G1	A03-280	1.25	7613-EE-81

\* Available with Fine Tooth Pattern When ordering use the suffix **(-FT)** for that style tooth pattern.



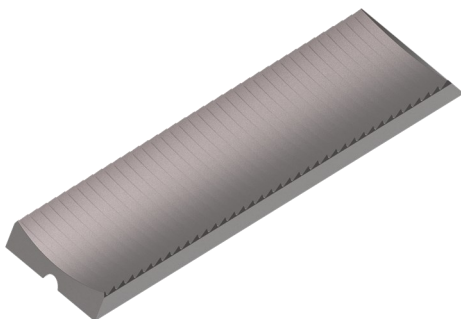
STYLE **STRANDARD**



STYLE **KEY-GRIT (CRA)**

### SLIP C-1 LINER

Description	Standard	KRY-GRIT	FTP	Wt.	Ref#
<b>C-1 LINER</b>	08-105	08-105-G1	08-105-FTP	0.93	7638-A-116



STYLE **STRANDARD**

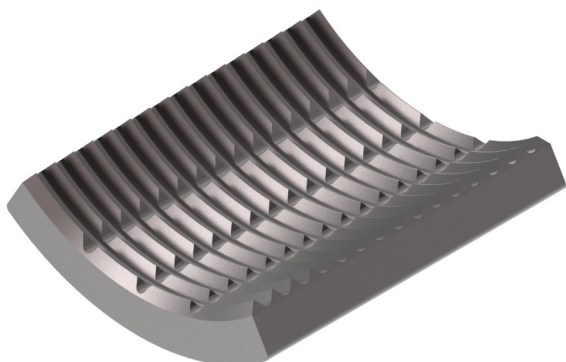


STYLE **KEY-GRIT (CRA)**

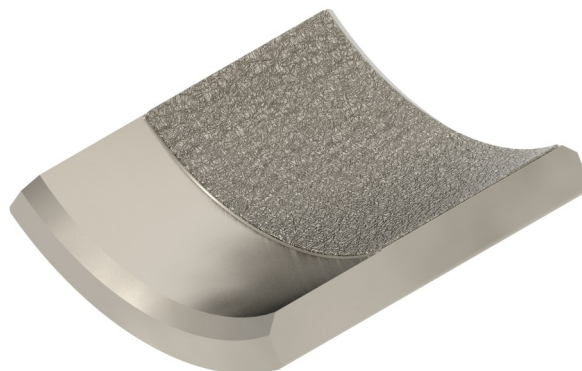
### SLIP UCS LINER

Description	Standard	KRY-GRIT	FTP	Wt.	Ref#
<b>UCS LINER (8-5/8"-26")</b>	7704-4-***	7704-A-***-G1	7704-A-***-FTP	-	7704-A-**

## 3-1/2" TS-100 TYPE INSERTS



STYLE **NON-DIRECTIONAL**



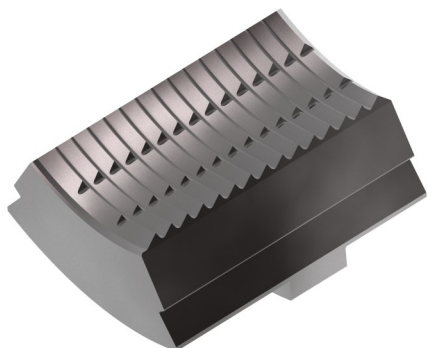
STYLE **KEY-GRIT (CRA)**

Tool Size	Pipe Size	Standard	KEY-GRIT	Wt.	Ref.#
3-1/2"	3/4"	21-109	21-109-G1	3	7502-A-5077
3-1/2"	1" (1.315")	21-108	21-108-G1	2.75	7502-A-5076
3-1/2"	1-1/4" (1.660")	21-107	21-107-G1	2.50	7502-A-5075
3-1/2"	1-1/2" (1.900")	21-106	21-106-G1	2.25	7502-A-5074
3-1/2"	2"	21-111	21-111-G1	2.10	7502-A-5073
3-1/2"	2-1/16"	21-105	21-105-G1	2.00	7502-A-5072
3-1/2"	2-3/8"	21-104	21-104-G1	1.40	7502-A-5071
3-1/2"	2-7/8"	21-103	21-103-G1	1.50	7502-A-5070
3-1/2"	3"	21-116	21-116-G1	1.4	-
3-1/2"	3-1/8"	21-102	21-102-G1	1.37	7502-A-318
3-1/2"	3-1/4"	21-114	21-114-G1	1.33	7502-A-314
3-1/2"	3-3/8"	21-115	21-115-G1	1.29	7502-A-338
3-1/2"	3-1/2"	21-101	21-101-G1	1.25	7502-A-5069

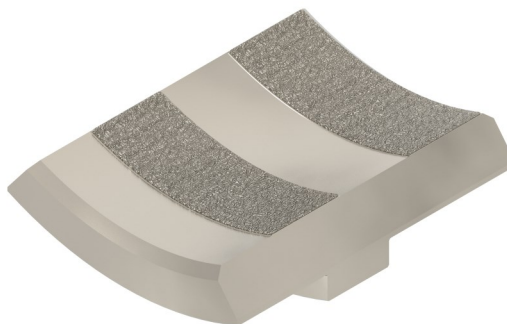
\* Available with ***Fine Tooth Pattern*** When ordering use the suffix ***(-FT)*** for that style tooth pattern.



# XP & LD INSERTS



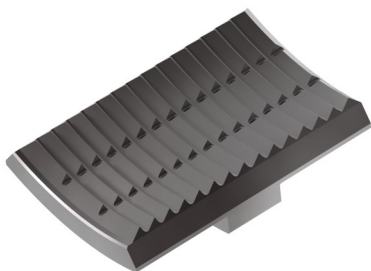
STYLE **DIRECTIONAL**



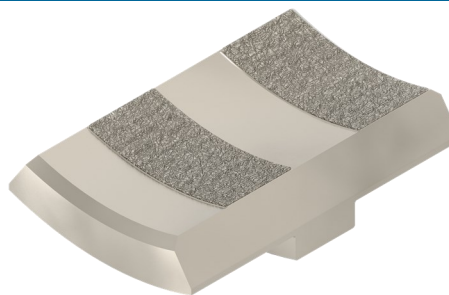
STYLE **KEY-GRIT (CRA)**

## “XP” INSERTS

Tool Size	Pipe Size	Standard	KEY-GRIT	Wt.	Ref.#
7"	3-1/2"	A03-1000-502	A03-1000-502-G1	6.16	03-1000-502
7"	4"	A03-1000-503	A03-1000-503-G1	5.82	03-1000-503
7"	4-1/2"	A03-1000-504	A03-1000-504-G1	5.33	03-1000-504
7"	5"	A03-1000-505	A03-1000-505-G1	4.77	03-1000-505
7"	5-1/2"	A03-1000-510	A03-1000-510-G1	4.13	03-1000-510
7"	5-7/8"	A03-1000-515	A03-1000-515-G1	3.60	03-1000-515
7"	6-5/8"	A03-1000-520	A03-1000-520-G1	2.40	03-1000-520
7"	6.906"	A03-1000-523	A03-1000-523-G1	1.97	03-1000-523



STYLE **DIRECTIONAL**



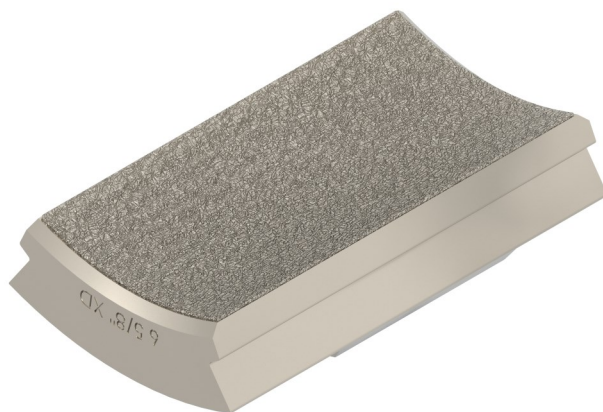
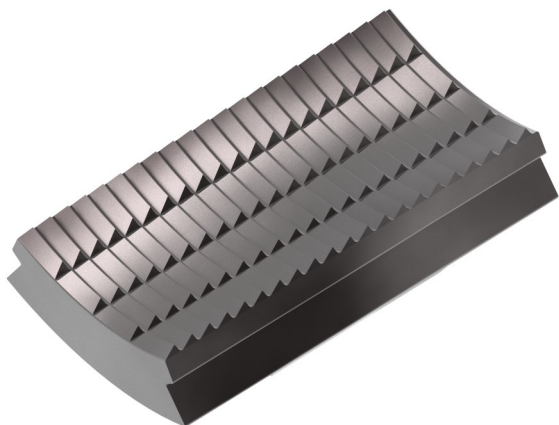
STYLE **KEY-GRIT (CRA)**

## “LD” INSERTS

Tool Size	Pipe Size	Standard	KEY-GRIT	Wt.	Ref.#
7"	3-1/2"	03-502	03-502-G1	5.90	03-502
7"	4"	03-503	03-503-G1	4.75	03-503
7"	4-1/2"	03-504	03-504-G1	4.35	03-504
7"	5"	03-505	03-505-G1	3.88	03-505
7"	5-1/2"	03-510	03-510-G1	3.35	03-510
7"	5-7/8"	03-515	03-515-G1	2.92	03-515
7"	6-5/8"	03-520	03-520-G1	2.34	03-520
7"	6.906"	03-523	03-523-G1	1.60	03-523
7"	7"	03-525	03-525-G1	1.48	03-525

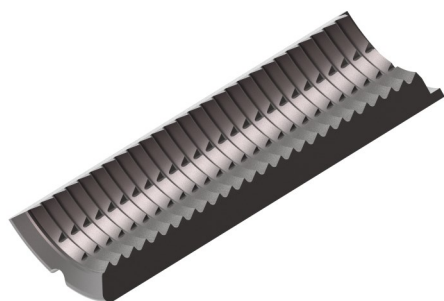


# RMET XD-750 SLIP INSERTS



Tool Size	Pipe Size	Standard	KEY-GRIT	Qty	Wt.	Ref.#
7-5/8"	5"	03-750-5000	03-750-5000-G1	18	7.10	03-750-5000
7-5/8"	5-1/2"	03-750-5500	03-750-5500-G1	18	6.34	03-750-5500
7-5/8"	5-7/8"	03-750-5785	03-750-5785-G1	18	5.71	03-750-5785
7-5/8"	6-5/8"	03-750-6625	03-750-6625-G1	18	4.32	03-750-6625
7-5/8"	6.906"	03-750-6906	03-750-6906-G1	18	3.75	03-750-6906
7-5/8"	7"	03-750-7000	03-750-7000-G1	18	3.60	03-750-7000
7-5/8"	7-5/8"	03-750-7625	03-750-7625-G1	18	2.25	03-750-7625

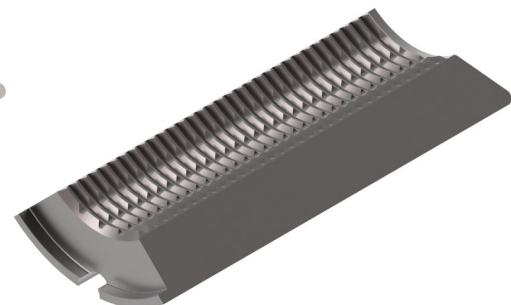
## CAVINS™ FULL CIRCLE SLIP INSERTS



STYLE **DIRECTIONAL**



STYLE **KEY-GRIT (CRA)**



STYLE **NON-DIRECTIONAL**

### INSERTS FOR CAVINS—TYPE “B” (2-7/8” BODY)

Tool Size	Pipe Size	Standard	KEY-GRIT	ND	Wt.	Ref.#
2-7/8"	2-3/8"	34-207	34-207-G1	34-207-ND	12.00	TC-651-3-1/2 X 2-3/8
2-7/8'	2-7/8"	34-206	34-206-G1	34-206-ND	7.80	TC-651-3-1/2 X 2-7/8

### INSERTS FOR CAVINS—TYPE “C” (3-1/2” BODY)

Tool Size	Pipe Size	Standard	KEY-GRIT	ND	Wt.	Ref.#
3-1/2"	1.900"	34-229	34-229-G1	34-229-ND	20.28	TC-651-1.990"
3-1/2"	2-1/16"	34-228	34-228-G21	34-228-ND	19.51	TC-650-2-1/16"
3-1/2"	2-3/8"	34-207	34-207-G1	34-207-ND	18.00	TC-651-3-1/2 X 2-3/8
3-1/2'	2-7/8"	34-206	34-206-G1	34-206-ND	14.40	TC-651-3-1/2 X 2-7/8
3-1/2"	3-1/2"	34-205	34-205-G1	34-205-ND	9.20	TC-650-3-1/2

### INSERTS FOR CAVINS—TYPE “C” (4-1/2” BODY)

Tool Size	Pipe Size	Standard	KEY-GRIT	ND	Wt.	Ref.#
4-1/2"	3-1/2"	34-211	34-211-G1	34-211-ND	21.50	TC-651-4-1/2 X 3-1/2
4-1/2"	4"	34-210	34-210-G1	34-210-ND	17.00	TC-651-4-1/2 X 4
4-1/2"	4-1/2"	34-209	34-209-G1	34-209-ND	12.00	TC-651-4-1/2

\* Available with ***Fine Tooth Pyramid Pattern***. When ordering use the suffix ***(-FTP)*** for that style tooth pattern.

## CAVINS™ FULL CIRCLE SLIP INSERTS

### INSERTS FOR CAVINS—TYPE “F” (3-1/2” BODY)

Tool Size	Pipe Size	Standard	KEY-GRIT	ND	Wt.	Ref.#
3-1/2"	2-3/8"	34-247	34-247-G1	34-247-ND	40.00	TF-651-3-1/2 X 2-3/8
3-1/2"	2-7/8"	34-246	34-246-G1	34-246-ND	35.00	TF-651-3-1/2 X 2-7/8
3-1/2"	3-1/2"	34-245	34-245-G1	34-245-ND	30.00	TF-650-3-1/2

### INSERTS FOR CAVINS—TYPE “F” (5-1/2” BODY)

Tool Size	Pipe Size	Standard	KEY-GRIT	ND	Wt.	Ref.#
5-1/2"	4"	34-253	34-253-G1	34-253-ND	71.00	TF-651-5-1/2 X 4
5-1/2"	4-1/2"	34-252	34-252-G1	34-252-ND	64.00	TF-651-5-1/2 X 4-1/2
5-1/2"	5"	34-251	34-251-G1	34-251-ND	21.00	TF-651-5-1/2 X 5
5-1/2"	5-1/2"	34-250	34-250-G1	34-250-ND	40.00	TF-651-5-1/2

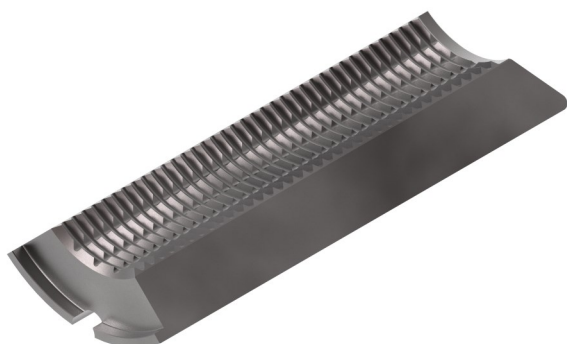
### INSERTS FOR CAVINS—TYPE “F” (7-5/8” BODY)

Tool Size	Pipe Size	Standard	KEY-GRIT	ND	Wt.	Ref.#
7-5/8"	5-7/8"	34-259	34-259-G1	34-259-ND	98.00	-
7-5/8"	6"	34-258	34-258-G1	34-258-ND	92.00	-
7-5/8"	6-1/2"	34-257	34-257-G1	34-587-ND	86.00	-
7-5/8"	6-5/8"	34-255	34-255-G1	34-255-ND	82.00	TF-651-7-5/8X 6-5/8
7-5/8"	7"	34-256	34-256-G1	34-256-ND	70.50	TF-651-7-5/8 X 7
7-5/8"	7-5/8"	34-254	34-564-G1	34-255-ND	53.00	TF-650-7-5/8

\*\*\* Available in ***Pyramid tooth pattern.*** When ordering use the suffix (-PT) for that style tooth pattern.



## OIL COUNTRY™ TYPE E SLIP INSERTS



STYLE **NON-DIRECTIONAL**



STYLE **KEY-GRIT (CRA)**

### INSERTS FOR OIL COUNTRY—TYPE “E” (3-1/2” BODY)

Tool Size	Pipe Size	Standard	KEY-GRIT	Wt.	Ref.#
3-1/2"	2-3/8"	34-164	34-164-G1	20.57	66651-1ST
3-1/2"	2-7/8"	34-165	34-165-G1	16.46	66651-2ST
3-1/2"	3-1/2"	34-166	34-166-G1	10.50	66651-3ST

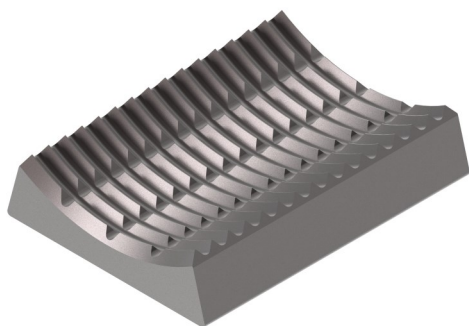
### INSERTS FOR OIL COUNTRY—TYPE “E” (5-1/2” BODY)

Tool Size	Pipe Size	Standard	KEY-GRIT	Wt.	Ref.#
5-1/2"	4"	34-182	34-182-G1	54.21	66653-1
5-1/2"	4-1/2"	34-183	34-183-G1	43.37	66653-2
5-1/2"	5"	34-184	34-184-G1	32.53	66653-3
5-1/2"	5-1/2"	34-185	34-185-G1	21.69	66653-4

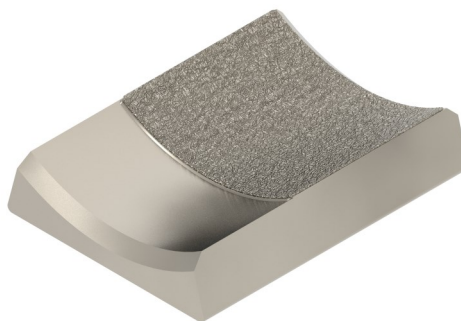
### INSERTS FOR OIL COUNTRY—TYPE “E” (7” BODY)

Tool Size	Pipe Size	Standard	KEY-GRIT	Wt.	Ref.#
7"	5-1/2"	34-192	34-192-G1	52.41	-
7"	6-5/8"	34-191	34-191-G1	28.85	66654-2ST
7"	7"	34-190	34-190-G1	20.96	66654-3ST

# KET DUAL TOOL INSERTS



STYLE **NON-DIRECTIONAL**



STYLE **KEY-GRIT (CRA)**

Tool Size	Pipe Size	Standard	KEY-GRIT	Qty	Ref.#
3-1/2"	1-1/4" (1.660)	DT-6605	DT-6605-G1	9	-
3-1/2"	1-1/2" (1.900)	DT-6604	DT-6604-G1	9	-
3-1/2"	2-1/16"	DT-6606	DT-6606-G1	9	-
3-1/2"	2-3/8"	DT-6603	DT-6603-G1	9	-
3-1/2"	2-7/8"	DT-6602	DT-6602-G1	9	-
3-1/2"	3-1/2"	DT-6607	DT-6607-G1	9	-
4-1/2"	4"	DT-6610	DT-6610-G1	9	-
4-1/2"	4-1/2"	DT-6608	DT-6608-G1	9	-



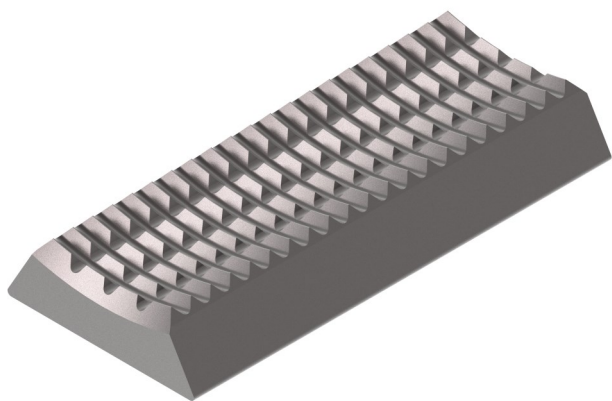
# WOOLLEY® A & B INSERTS



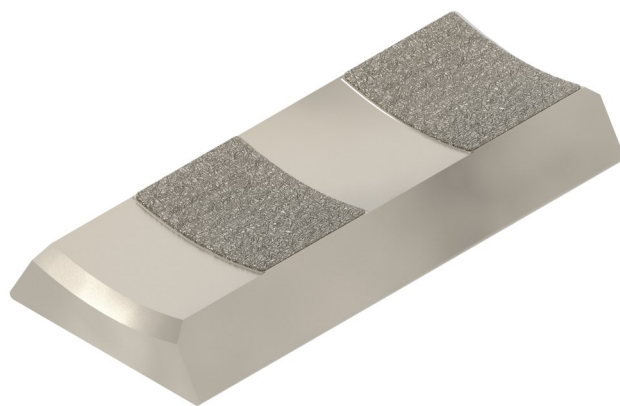
STYLE **STANDARD "A"**



STYLE **KEY-GRIT (CRA)**



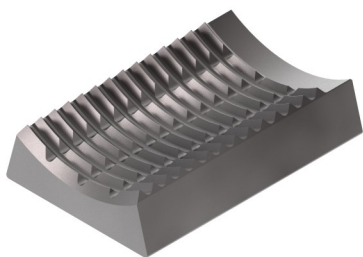
STYLE **STANDARD "B"**



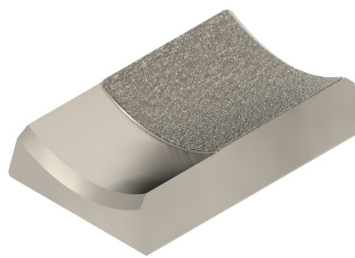
STYLE **KEY-GRIT (CRA)**

Tool Size	Pipe Size	Style	Standard	KEY-GRIT	Qty	Wt.	Ref.#
5-1/2"	4"	WOOLLEY A	20-103	20-103	-	0.25	797-000-0000
4-1/2"	2-1/16"	WOOLLEY B	19-255	19-255-G1	18/24	2.50	-
4-1/2"	2-3/8"	WOOLLEY B	19-254	19-254-G1	18/24	2.25	757-044-0123
4-1/2"	2-7/8"	WOOLLEY B	19-253	19-253-G1	18/24	2.00	757-044-0127
4-1/2"	3-1/2"	WOOLLEY B	19-252	19-252-G1	18/24	1.50	757-044-0134
4-1/2"	4"	WOOLLEY B	19-251	19-251-G1	18/24	1.00	757-044-0140
4-1/2"	4-1/2"	WOOLLEY B	19-250	19-250-G1	18/24	0.75	757-044-0144
5-1/2"	5"	WOOLLEY B	19-5012	19-5012-G1	24	2.00	757-054-0450
5-1/2"	5-1/2"	WOOLLEY B	19-5010	19-5010-G1	24	1.30	757-054-0154

## HYDRA-RIG™ INSERTS



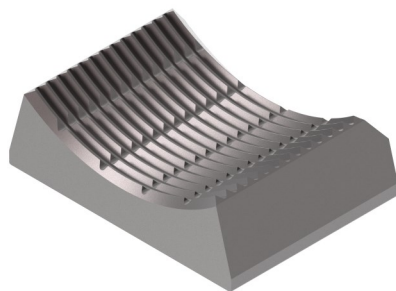
STYLE **STANDARD**



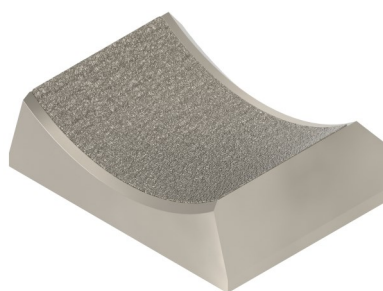
STYLE **KEY-GRIT (CRA)**

### HYDRA RIG "150"

Tool Size	Pipe Size	Standard	KEY-GRIT	Qty	Wt.	Ref.#
2-7/8"	1" (1.315)	6006	6006-G1	8	2.90	6006
2-7/8"	1-1/4" (1.660)	6005	6005-G1	8	2.75	6005
2-7/8"	1-1/2" (1.900)	6004	6004-G1	8	2.60	6004
2-7/8"	2"	6010	6010-G1	8	2.45	6010
2-7/8"	2-1/16"	6003	6003-G1	8	2.45	6003
2-7/8"	2-3/8"	6002	6002-G1	8	2.30	6002
2-7/8"	2-7/8"	6001	6001-G1	8	1.90	6001
2-7/8"	3-1/8"	6012	6012-G1	8	1.68	6012
2-7/8"	3-1/2"	6009	6009-G1	8	1.38	6009



STYLE **STANDARD**

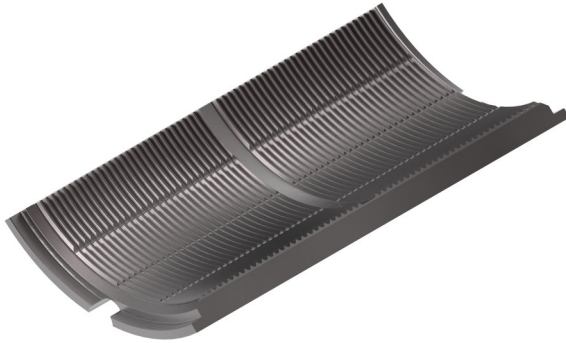


STYLE **KEY-GRIT (CRA)**

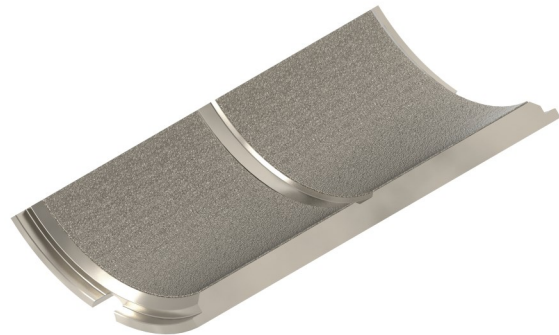
### HYDRA RIG "225"

Tool Size	Pipe Size	Standard	KEY-GRIT	Qty	Wt.	Ref.#
5-1/2"	2-3/8"	65-2354	65-2354-G1	12	6.00	6157
5-1/2"	2-7/8"	6156	6156-G1	12	5.75	6156
5-1/2"	3-1/8"	6158	6158-G1	12	5.63	6158
5-1/2"	3-1/2"	65-3454	65-3454-G1	12	5.50	6155
5-1/2"	4"	6154	6154-G1	12	5.25	6154
5-1/2"	4-1/2"	65-4454	65-4454-G1	12	5.00	6153
5-1/2"	4-3/4"	65-4654	65-4654-G1	12	4.92	4654
5-1/2"	5"	6152	6152-G1	12	4.80	6152
5-1/2"	5-1/2"	5151	6151-G1	12	4.75	6151

## HYDRA-RIG™ INSERTS



STYLE **STANDARD**

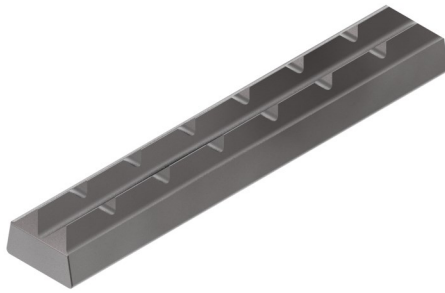


STYLE **KEY-GRIT (CRA)**

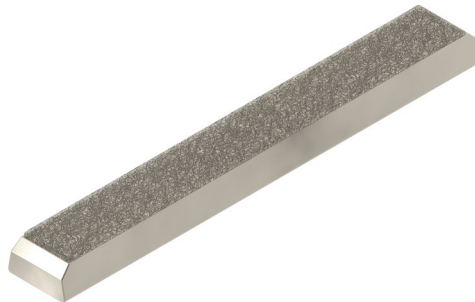
HYDRA RIG "300"

Tool Size	Pipe Size	Standard	KEY-GRIT	Qty	Wt.	Ref.#
7-5/8"	2-7/8"	6181	6181-G1	4	40	6181
7-5/8"	3-1/2"	6182	6182-G1	4	37	6182
7-5/8"	4"	6179	6179-G1	4	34	6179
7-5/8"	4-1/2"	6178	6178-G1	4	33	6178
7-5/8"	5"	6180	6180-G1	4	30	6180
7-5/8"	5-1/2"	6176	6176-G1	4	27	6176
7-5/8"	5-3/4"	6177	6177-G1	4	30	6177
7-5/8"	6"	6175	6175-G1	4	24	6175
7-5/8"	6-1/2"	6169	6169-G1	4	20	6169
7-5/8"	6-5/8"	6174	6174-G1	4	19	6174
7-5/8"	7"	6172	6172-G1	4	17	6172
7-5/8"	7-5/8"	6171	6171-G1	4	11	6171

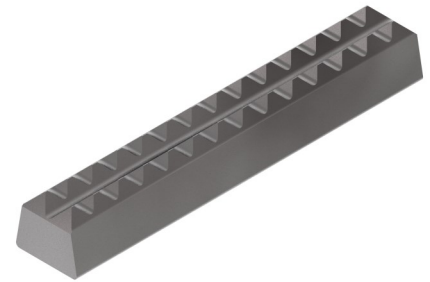
## 5/8" TONG DIES



STYLE **STANDARD**



STYLE **KEY-GRIT (CRA)**

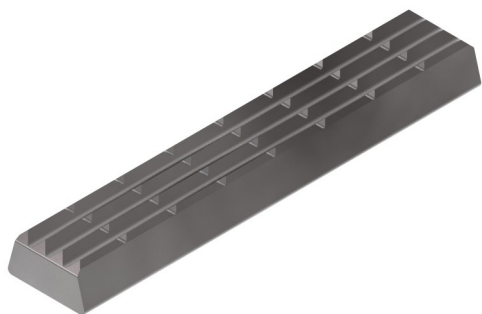


STYLE **PYRAMID**

Size (HxWxL)	Standard	KEY-GRIT	Pyramid	Wt.	Ref.#
3/8" X 5/8" X 1-15/16"	6472	6472-G1	6472-PT	0.1	4009
3/8" X 5/8" X 3-1/2"	6474	6474-G1	6474-PT	0.17	4030
3/8" X 5/8" X 3-7/8"	6475	6475-G1	6475-PT	0.38	4051
3/8" X 5/8" X 4-1/2"	061044	061044-G1	061044-PT	0.44	4001
1/2" X 5/8" X 4-1/2"	081044	081044-G1	081044-PT	0.21	
17/32" X 5/8" X 3-1/2"	6486	6486-G1	6486-PT	0.25	4031
17/32" X 5/8" X 3-7/8"	6487	6487-G1	6487-PT	0.28	4053
17/32" X 5/8" X 4-1/2"	6488	6488-G1	6488-PT	0.32	4003
5/8" X 5/8" X 3-1/2"	6490	6490-G1	6490-PT	0.3	4032
5/8" X 5/8" X 3-7/8"	6491	6491-G1	6491-PT	0.33	4054
5/8" X 5/8" X 4-1/2"	6492	6492-G1	6492-PT	0.38	4004
11/16" X 5/8" X 3-7/8"	9494	9494-G1	9494-PT	0.36	4055
11/16" X 5/8" X 4-1/2"	9495	9495-G1	9495-PT	0.42	4005
1" X 5/8" X 3-3/8"	1619	1619-G1	1619-PT	0.52	

- \* Available in **Pyramid tooth pattern**. When ordering use the suffix **(-PT)** for that style tooth pattern.
- \* Available in **Fine-Tooth Pyramid pattern**. When ordering use the suffix **(-FTP)** for that style tooth pattern.
- \* Available with a **Radius End** for use in NOV Make-up & Break-out units. When ordering use the suffix **(-RAD)** for that style tong die.
- \* **KEY-GRIT** Dies are available with a **Contour (Radius) Profile** on the tubular surface. When ordering specify the diameter tubular you are gripping.

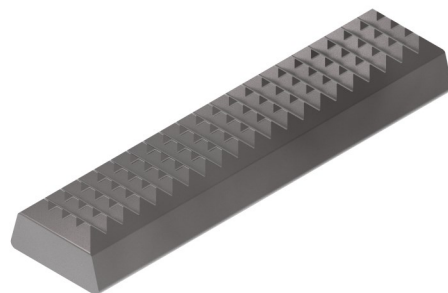
# 1" TONG DIES



STYLE **STANDARD**



STYLE **KEY-GRIT (CRA)**



STYLE **PYRAMID**

Size (HxWxL)	Standard	KEY-GRIT	Pyramid	Wt.	Ref.#
3/8" X 1" X 1-7/8"	24556	24556-G1	24556-PT	0.18	1506
3/8" X 1" X 1-15/16"	24558	24558-G1	24558-PT	0.19	1501
3/8" X 1" X 2-1/8"	24560	24560-G1	24560-PT	0.2	1502
3/8" X 1" X 2-1/2"	061624	061624-G1	061624-PT	0.21	1503
3/8" X 1" X 2-5/8"	24562	24562-G1	24562-PT	0.22	1504
3/8" X 1" X 3-7/8"	6473	6473-G1	6473-PT	0.32	1505
3/8" X 1" X 4-1/4"	4316	4316-G1	4361-PT	0.35	1508
3/8" X 1" X 4-1/2"	061644	061644-G1	061644-PT	0.37	1509
3/8" X 1" X 5-3/4"	4516	4516-G1	4516-PT	0.47	1510
7/16" X 1" X 3-7/8"	4520	4520-G1	4520-PT	0.38	1511
1/2" X 1" X 3-7/8"	24768-2	24768-2-G1	24768-2-PT	0.44	1521
1/2" X 1" X 5"	6489	6489-G1	6489-PT	0.56	1522
9/16" X 1" X 2-1/2"	4800	4800-G1	4800-PT	0.32	1531
9/16" X 1" X 3-7/8"	4804	4804-G1	4804-PT	0.5	1532
5/8" X 1" X 3-7/8"	101637	101637-G1	101637-PT	0.55	1541
11/16" X 1" X 3-7/8"	11550	11550-G1	11550-PT	0.61	1542
3/4" X 1" X 3-7/8"	122030	122030-G1	122030-PT	0.67	1543
3/4" X 1" X 4-1/4"	122032	122032-G1	122032-PT	0.69	1508
1" X 1" X 3-7/8"	161637	161637-G1	161637-PT	0.73	

- \* Available in **Pyramid tooth pattern**. When ordering use the suffix **(-PT)** for that style tooth pattern.
- \* Available in **Fine-Tooth Pyramid pattern**. When ordering use the suffix **(-FTP)** for that style tooth pattern.
- \* Available with a **Radius End** for use in NOV Make-up & Break-out units. When ordering use the suffix **(-RAD)** for that style tong die.
- \* **KEY-GRIT** Dies are available with a **Contour (Radius) Profile** on the tubular surface. When ordering specify the diameter tubular you are gripping.

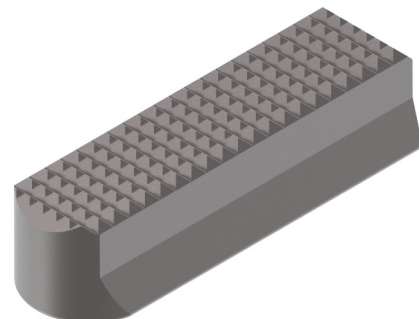
## 1-1/4" TONG DIES



STYLE **STANDARD**



STYLE **KEY-GRIT (CRA)**



STYLE **PYRAMID**

Size (HxWxL)	Standard	KEY-GRIT	Pyramid	Wt.	Ref.#
3/8" X 1-1/4" X 2-1/2"	082024	082024-G1	082024-PT	0.25	-
3/8" X 1-1/4" X 3-7/8"	1614	1614-G1	1614-PT	0.39	1614
3/8" X 1-1/4" X 5"	062050	062050-G1	062050-PT	0.5	1610
3/8" X 1-1/4" X 5-7/8"	76-51257	76-51257-G1	76-51257-PT	0.59	-
7/16" X 1-1/4" X 2-1/2"	1611	1611-G1	1611-PT	0.3	1611
7/16" X 1-1/4" X 3-7/8"	1612	1612-G1	1612-PT	0.46	1612
7/16" X 1-1/4" X 5"	07-2050	07-2050-G1	07-2050-PT	0.6	1617
7/16" X 1-1/4" X 5-7/8"	1615	1615-G1	1615-PT	0.71	-
1/2" X 1-1/4" X 2-1/2"	082024	082024-G1	082024-PT	0.35	1612
1/2" X 1-1/4" X 3-1/2"	082034	082034-G1	082034-PT	0.45	-
1/2" X 1-1/4" X 3-7/8"	24768-2	24768-2-G1	24768-2-PT	0.54	1601
1/2" X 1-1/4" X 5"	16401-2	16401-2-G1	16401-2-PT	0.69	1602
1/2" X 1-1/4" X 5-7/8"	16402-2	16402-2-G1	16402-2-PT	0.82	1603
9/16" X 1-1/4" X 2-1/2"	16-20	16-20-G1	16-20-PT	0.39	1621
9/16" X 1-1/4" X 3-7/8"	16-22	16-22-G1	16-22-PT	0.61	1622
9/16" X 1-1/4" X 5"	092050	092050-G1	092050-PT	0.78	1623
9/16" X 1-1/4" X 5-7/8"	16-24	16-24-G1	16-24-PT	0.92	-
5/8" X 1-1/4" X 2-1/2"	102030	102030-G1	102030-PT	0.44	1631
5/8" X 1-1/4" X 3-7/8"	102037	102037-G1	102037-PT	0.68	1632
5/8" X 1-1/4" X 5"	102050	102050-G1	102050-PT	0.87	1633
5/8" X 1-1/4" X 5-7/8"	102057	102057-G1	102057-PT	1.02	1694
11/16" X 1-1/4" X 2-1/2"	112030	112030-G1	112030-PT	0.48	1641
11/16" X 1-1/4" X 3-7/8"	112037	112037-G1	112037-PT	0.74	1642
11/16" X 1-1/4" X 5"	112050	112050-G1	112050-PT	0.96	1646
11/16" X 1-1/4" X 5-7/8"	6416446	6416446-G1	6416446-PT	1.13	1644



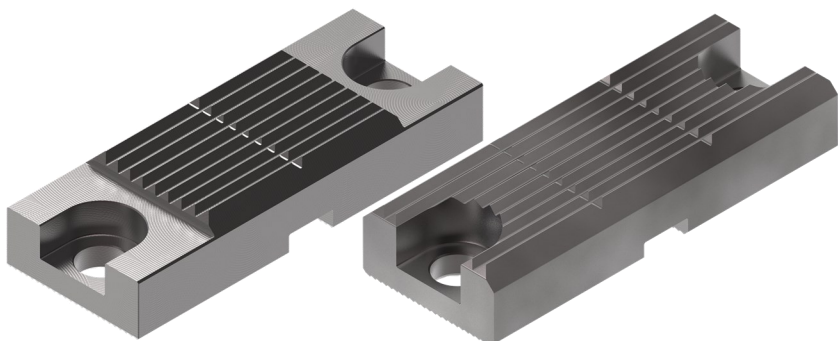
## 1 1/4" TONG DIES

Size (HxWxL)	Standard	KEY-GRIT	Pyramid	Wt.	Ref.#
3/4" X 1-1/4" X 3-1/2"	122034	122034-G1	122034-PT	0.75	-
3/4" X 1-1/4" X 3-7/8"	122037	122037-G1	122037-PT	0.81	1651
3/4" X 1-1/4" X 5"	76-61250	76-61250-G1	76-61250-PT	1.05	1693
3/4" X 1-1/4" X 5-7/8"	76-61257	76-61257-G1	76-61257-PT	1.23	1649
13/16" X 1-1/4" X 3-7/8"	132037	132037-G1	132037-PT	0.88	1681
13/16" X 1-1/4" X 5"	132050	132050-G1	132050-PT	1.14	1664
13/16" X 1-1/4" X 5-7/8"	132055	132055-G1	132055-PT	1.34	-
7/8" X 1-1/4" X 3-7/8"	142037	142037-G1	142037-PT	0.95	1671
7/8" X 1-1/4" X 5"	142050	142050-G1	142050-PT	1.23	1673
7/8" X 1-1/4" X 5-7/8"	142057	142057-G1	142057-PT	1.45	1672
15/16" X 1-1/4" X 3-7/8"	152037	152037-G1	152037-PT	1.02	1681
15/16" X 1-1/4" X 5"	152050	152050-G1	152050-PT	1.32	1682
15/16" X 1-1/4" X 5-7/8"	152051	152051-G1	152051-PT	1.55	-
1" X 1-1/4" X 3-7/8"	162037	162037-G1	162037-PT	1.25	1691
1" X 1-1/4" X 5"	162050	162050-G1	162050-PT	1.61	1697
1" X 1-1/4" X 5-7/8"	162057	162057-G1	162057-PT	1.8	1692
1-1/16" X 1-1/4" X 3-7/8"	172045	172045-G1	172045-PT	1.14	1690
1-1/8" X 1-1/4" X 3-7/8"	1683	1683-G1	1683-PT	1.205	-
1-1/8" X 1-1/4" X 5"	1684	1684-G1	1684-PT	1.99	1684
1-1/4" X 1-1/4" X 3-7/8"	1692	1692-G1	1692-PT	1.22	-
1-1/4" X 1-1/4" X 5"	1698	1698-G1	1698-PT	2.20	-
1-5/16" X 1-1/4" X 3-7/8"	1705	1705-G1	1705-PT	1.33	-
1-5/16" X 1-1/4" X 5"	1710	1710-G1	1710-PT	1.42	-
1 1/2" X 1-1/4" X 5"	242050	242050-G1	242050-PT	2.27	1676
1 1/2" X 1-1/4" X 5-7/8"	192057	192057-G1	192057-PT	2.10	-
1-11/16" X 1-1/4" X 5"	172050	172050-G1	172050-PT	2.32	-
1-13/16" X 1-1/4" X 5"	192050	192050-G1	192050-PT	2.42	-



- \* Available in **Pyramid tooth pattern.** When ordering use the suffix ***(-PT)*** for that style tooth pattern.
- \* Available in **Fine-Tooth Pyramid pattern.** When ordering use the suffix ***(-FTP)*** for that style tooth pattern.
- \* Available with a **Radius End** for use in NOV Make-up & Break-out units. When ordering use the suffix ***(-RAD)*** for that style tong die.
- \* **KEY-GRIT** Dies are available with a **Contour (Radius) Profile** on the tubular surface. When ordering specify the diameter tubular you are gripping.

# ST-80 IRON ROUGHNECK DIES



STYLE **ST-80 UPPER DIE**



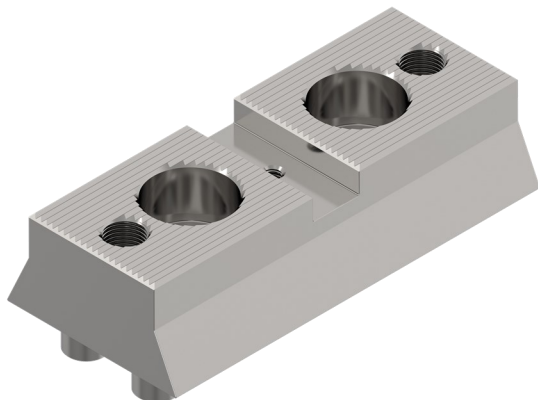
STYLE **ST-80 LOWER DIE**



STYLE **ST-80 UPPER DIE—KEY-GRIT (CRA)**



STYLE **ST-80 LOWER DIE—KEY-GRIT (CRA)**



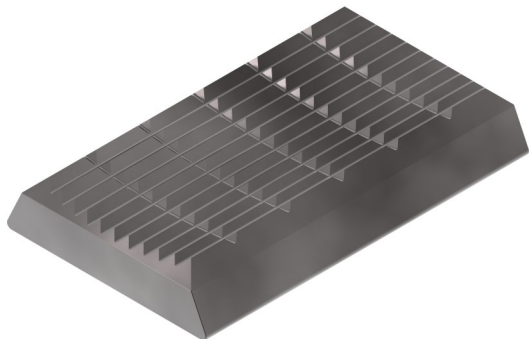
STYLE **ST-80 UPPER DIE JAW BLOCK**



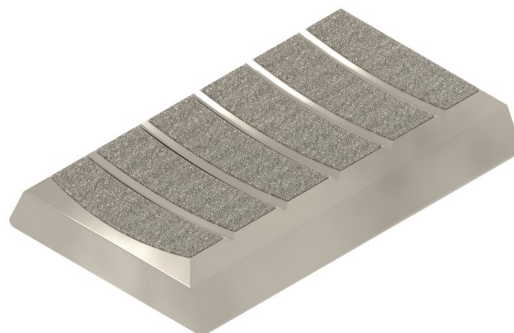
STYLE **ST-80 LOWER DIE HOLDER**

Description	Standard	KEY-GRIT	Wt.	Ref.#
LOWER ST-80 DIE ONLY	ST-80-LD	ST-80-LD-G1	2.50	30160385
UPPER ST-80 DIE ONLY	ST-80-UD	ST-80-UD-G1	3.09	30160380-500
UPPER DIE JAW BLOCK	ST-80-UDJB	-	5.30	361005481
LOWER DIE HOLDER	ST-80-HOL	-	6.85	30160383

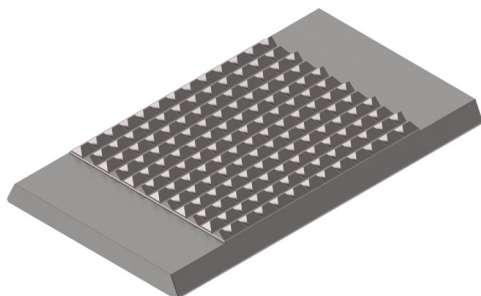
# IRON ROUGHNECK DIES



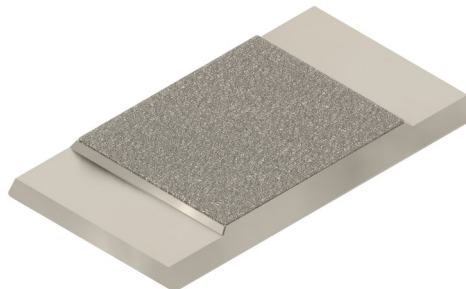
STYLE *PIPE HANDLER DIE*



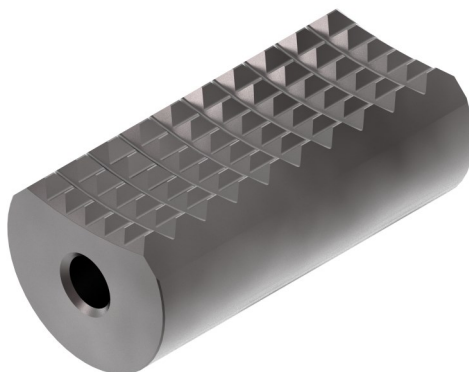
STYLE *PIPE HANDLER DIE—KEY-GRIT (CRA)*



STYLE *IRON ROUGHNECK*



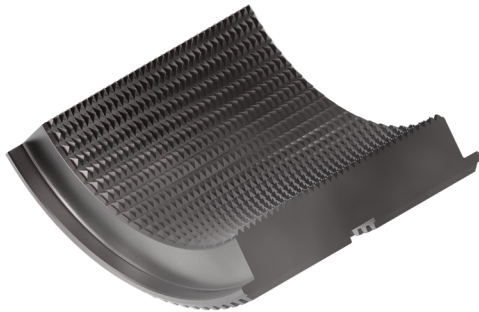
STYLE *PYRAMID TONG DIE—KEY-GRIT (CRA)*



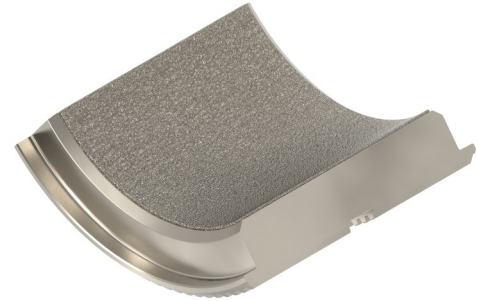
STYLE *CANRIG TORQ-MATIC TM80-120*

Description	Standard	KEY-GRIT	Wt.	Ref.#
IRON ROUGHNECK DIE	81788	81788-G1	2.74	81788
IRON ROUGHNECK TONG DIE	AC01-01-03	AC01-01-03	2.1	AC01-01-03
TORQ-MATIC TM-80 -TM120	161100210	161100210-G1	1.61	-

## CLINCHER® TYPE WRAP AROUND TONG DIE



STYLE **STANDARD**



STYLE **KEY-GRIT (CRA)**

Tong Size	Model #	Jaws	Size Range	Qty	Standard	KEY-GRIT	Ref.#
3-1/2" STD	CLE3500	CRA-Grip®	CJ-LF-35/CJ-358	2	CLE-135-XXXX-0	CLE-135-XXXX-G1	CLE135XXXX
5-1/2" STD	CLES5500	CJ-51A CJ-51B	2-1/16" to 3-1/2" 3-5/8" to 5-1/2"	2	CLES-5500-XXXX-0	CLES-5500-XXXX-G1	CLES5500XXXX
5-1/2" L-JAW	CLJ5500	NIA	2-1/16" TO 5-1/2"	2 SIDE	CLJ-5500-XXXX-0	CLJ-5500-XXXX-G1	CLJ5500XXXX
		NIA	2-1/16" TO 5-1/2"	1 BACK	CLJ-5501-XXXX-0	CLJ-5501-XXXX-G1	CLJ5501XXXX
5-1/2" UHT	CLE5500	CJ-55A OLD STYLE	2-1/16" TO 5"	2	CLE-5500-XXXX-0	CLE-5500-XXXX-G1	CLE5500XXXX
		CJ-LF-55A	2-1/16" TO 3-1/2"	2	CLE-5500-XXXX-0	CLE-5500-XXXX-G1	CLE5500XXXX
		CJ-558	3-5/8" TO 5-1/2"	2	CLJ-5501-XXXX-0	CLJ-5501-XXXX-G1	CLJ5501XXXX
5-1/2" XHT	CLE5500XHT	CJ-LF-598	2-1/16" TO 5-1/2"	2	CLJ-5501-XXXX-0	CLJ-5501-XXXX-G1	CLJ5501XXXX
		CJ-598	3-1/2" TO 5-1/2"	2	CLJ-5501-XXXX-0	CLJ-5501-XXXX-G1	CLJ5501XXXX
5-1/2" CM	CM5500	NIA	2-1/16" TO 5-1/2"	2	BUC-5500-XXXX-0	BUC-5500-XXXX-G1	BUC5500XXXX
7-5/8" UHT	CLE7625	CJ-76A	2-3/8" TO 4-1/2"	2	BUC-4500-XXXX-0	BUC-4500-XXXX-G1	BUC4500XXXX
		CJ-768	4-3/4" TO 7-5/8"	2	BUC-7625-XXXX-0	BUC-7625-XXXX-G1	BUC7625XXXX
7-5/8" CM	CM7625	NIA	2-3/8" TO 7-5/8"	2	BUC-7625-XXXX-0	BUC-7625-XXXX-G1	BUC7625XXXX
7-5/8" L-JAW	CLJ7625	NIA	2-3/8" TO 7-5/8"	2	BUC-7625-XXXX-0	BUC-7625-XXXX-G1	BUC7625XXXX
8-5/8" DP	CLE8625DP	CJ-76C	5-1/2" TO 7-5/8"	2	BUC-7625-XXXX-0	BUC-7625-XXXX-G1	BUC7625XXXX
8-5/8" DP	CLE8625DP	CJ-86A	5-1/2" TO 8-5/8"	2	BUC-8625-XXXX-0	BUC-8625-XXXX-G1	BUC8625XXXX
8-5/8" DP	CLE8625DP	CJ-LF-760	2-3/8" TO 8-1/2"	2	BUC-5500-XXXX-0	BUC-5500-XXXX-G1	BUC5500XXXX
8-5/8" DP	CLE8625DP	CJ-LF-868	5-1/2" TO 8-5/8"	2	BUC-8625-XXXX-0	BUC-8625-XXXX-G1	BUC8625XXXX
10-3/4"	CLE10750	CJ-10A	8-5/8" TO 10-3/4"	2	CLE-1075-XXXX-0	CLE-1075-XXXX-G1	CLE1075XXXX
10-3/4"	CLE10750	CJ-LF-10A	2-3/8" TO 7-5/8"	2	CLE-1075-XXXX-0	CLE-1075-XXXX-G1	CLE1075XXXX
14"	CLE14000	CJ-LF-14A	4-1/2" TO 7-5/8"	2	BUC-7625-XXXX-0	BUC-7625-XXXX-G1	BUC7625XXXX
14"	CLE14000	CJ-LF-148	7-5/8" TO 10-3/4"	2	BUCM-1075-XXXX-0	BUCM-1075-XXXX-G1	BUCM1075XXXX
14"	CLE14000	CJ-LF-14C	7-5/8" TO 11-3/4"	2	CLEBU-1175-XXXX-0	CLEBU-1175-XXXX-G1	CLEBU1175XXXX
14"	CLE14000	CJ-14A	10-3/4" TO 14"	2	CLE-1400-XXXX-0	CLE-1400-XXXX-G1	CLE1400XXXX
14" DP	CLE14000DP	CJ-14X	9-5/8" TO 14"	2	CLE-1400-XXXX-0	CLE-1400-XXXX-G1	CLE1400XXXX
		CJ-LF-14X	7-5/8" TO 11-3/4"	2	CLEBU-1175-XXXX-0	CLEBU-1175-XXXX-G1	CLEBU1175XXXX
	CLE14000DP	CJ-86A	5-1/2" TO 8-5/8"	2	BUC-8625-XXXX-0	BUC-8625-XXXX-G1	BUC8625XXXX

\* "XXXX" in the part number is the outside diameter of the tubular.

## CLINCHER® WRAPAROUND BACKUP DIES

Tong Size	OEM Model #	Qty of Dies	Standard	KEY-GRIT	Ref.#
4" LOCKJAW	BUCS4000	3	BUC-4000-XXXX-0	BUC-4000-XXXX-G1	BUC4000XXXX
4-1/2" LOCKJAW	BUCS4500"	3	BUCS-4500-XXXX-0	BUCS-4500-XXXX-G1	BUCS4500XXXX
4-1/2" STD	BUC4000"	3	BUC-4500-XXXX-0	BUC-4500-XXXX-G1	BUC4500XXXX
5-1/2" STD	BUC5500"	3	BUC-5500-XXXX-0	BUC-5500-XXXX-G1	BUC5500XXXX
5-1/2" LOCKJAW	BUCS5500"	2 SIDE	CLJ-5500-XXXX-0	CLJ-5500-XXXX-G1	CLJ5500XXXX
		1 BACK	CLJ-5500-XXXX-AL	CLJ-5500-XXXX-G1	CLJ5500XXXX
5" UHT	BUC5500'	3	BUC-5500-XXXX-0	BUC-5500-XXXX-G1	BUC5500XXXX
5-1/2" DRILLPIPE	BUCD5500"	3	BUC-5500-XXXX-0	BUC-5500-XXXX-G1	BUC5500XXXX
5-1/2" XHT	BUCD55XHT"	3	BUC-5500-XXXX-0	BUC-5500-XXXX-G1	BUC5500XXXX
6-1/4" LOCKJAW	BUCS625<r	2 SIDE	BUCS-6250-XXXX-0	BUCS-6250-XXXX-G1	BUCS6250XXXX
		1 BACK	BUCS-6251-XXXX-AL	BUCS-6251-XXXX-G1	BUCS6251XXXX
6-1/4" UHT	BUC6250"	3	BUC-7625-XXXX-0	BUC-7625-XXXX-G1	BUC7625XXXX
6-3/8" STD	BUC6375"	3	BUC-6375-XXXX-0	BUC-6375-XXXX-G1	BUC6375XXXX
7-5/8" UHT	BUC7625"	3	BUC-7625-XXXX-0	BUC-7625-XXXX-G1	BUC7625XXXX
7-5/8" LOCKJAW	BUCS7625"	3	BUC-7625-XXXX-0	BUC-7625-XXXX-G1	BUC7625XXXX
8-5/8" UHT	BUC8625.	3	BUC-8625-XXXX-0	BUC-8625-XXXX-G1	BUC8625XXXX
8-5/8" DRILL PIPE	BUCDPBSOO"	3	BUC-8625-XXXX-0	BUC-8625-XXXX-G1	BUC8625XXXX
11-31/4" LOCKJAW	BUCS11750-01"	3 each 7-5/8 TO 11-3/4"	CLE-10750-XXXX-0	CLE-10750-XXXX-G1	CLE10750XXXX
11-3/4" LOCKJAW	BUCS11750-01"	3 each 4-1/2" TO 7-5/8"	BUC-7625-XXXX-0	BUC-7625-XXXX-G1	BUC7625XXXX
11-3/4" LOCKJAW	BUCS11750-01"	3 each 2-3/8" TO 4-1/2"	BUC-4500-XXXX-0	BUC-4500-XXXX-G1	BUC4500XXXX
15" LOCKJAW	BUCS15000"	3 each 5-1/2" TO 8-5/8"	BUC-8625-XXXX-0	BUC-8625-XXXX-G1	BUC8625XXXX
15" LOCKJAW	BUCS15000"	3 each 8-7/8" TO 15"	BUC-1500-XXXX-0	BUC-1500-XXXX-G1	BUC1500XXXX

\* "XXXX" in the part number is the outside diameter of the tubular.

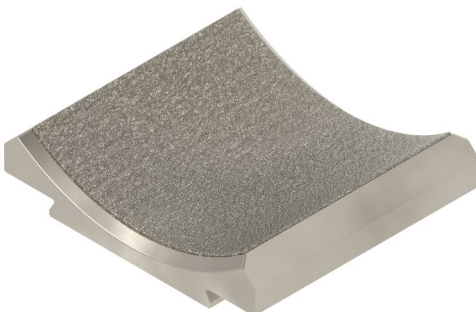




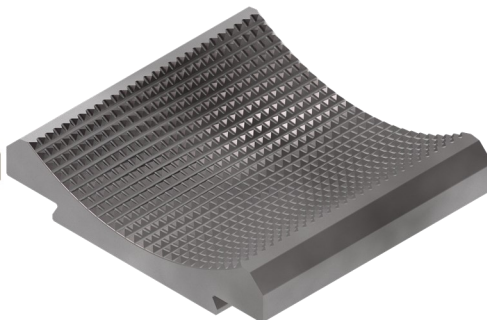
# ECKEL® TONG & BACKUP TYPE DIE



STYLE **PYRAMID**



STYLE **KEY-GRIT (CRA)**



STYLE **FINE PYRAMID**

## DIES—4-1/2" HYDRA-SHIFT & 4-1/2" UHT TONG

Description	Designation	Standard	KEY-GRIT	FTP	Wt.	Ref#
2-3/8" Wrap Around	L	106490	106490-G1	106490-FTP	-	106490
2-7/8" Wrap Around	L	106489	106489-G1	106489-FTP	-	106489
3-1/2" Wrap Around	L	106488	106488-G1	106488-FTP	-	106488
4" Wrap Around	L	106885	106885-G1	106885-FTP	-	106885
4-1/2" Wrap Around	L	106884	106884-G1	106884-FTP	-	106884

## DIES—4-1/2" HYDRA-SHIFT & 4-1/2" UHT BACKUP

Description	Designation	Standard	KEY-GRIT	FTP	Wt.	Ref#
2-3/8" Wrap Around	NNB	112985	112985-G1	112985-FTP	-	112985
2-7/8" Wrap Around	NNB	112986	112986-G1	112986-FTP	-	112986
3-1/2" Wrap Around	NNB	112987	112987-G1	112987-FTP	-	112987
4" Wrap Around	NNB	112988	112988-G1	112988-FTP	-	112988
4-1/2" Wrap Around	NNB	113192	113192-G1	113192-FTP	-	113192

## DIES—5-1/2" HYDRA-SHIFT LS & 5-1/2" HYDRA-SHIFT VS TONG

Description	Designation	Standard	KEY-GRIT	FTP	Wt.	Ref#
2-3/8" Wrap Around	P	107482	107482-G1	107482-FTP	-	107482
2-7/8" Wrap Around	P	107481	107481-G1	107481-FTP	-	107481
3-1/2" Wrap Around	P	107480	107480-G1	107480-FTP	-	107480
4" Wrap Around	P	107479	107479-G1	107479-FTP	-	107479
4-1/2" Wrap Around	P	107444	107444-G1	107444-FTP	-	107444
5" WRAP AROUND	P	107516	107516-G1	107516-FTP	-	107516
5-1/2" WRAP AROUND	P	107383	107383-G1	107383-FTP	-	107383

## ECKEL® TONG & BACKUP TYPE DIE

### DIES—5-1/2" HYDRA-SHIFT LS & 5-1/2" HYDRA-SHIFT vs BACKUP

Description	Designation	Standard	KEY-GRIT	FTP	Wt.	Ref#
2-3/8" Wrap Around	OTB	T113073	T113073-G1	T113073-FTP	-	113073
2-7/8" Wrap Around	OTB	T113074	T113074-G1	T113074-FTP	-	113074
3-1/2" Wrap Around	OTB	T113075	T113075-G1	T113075-FTP	-	113075
4" Wrap Around	OTB	T110376	T110376-G1	T110376-FTP	-	110376
4-1/2" Wrap Around	OTB	T110377	T110377-G1	T110377-FTP	-	110377
5" WRAP AROUND	OTB	T110378	T110378-G1	T110378-FTP	-	110378
5-1/2" WRAP AROUND	P	T107383	T107383-G1	T107383-FTP	-	107383

### DIES—5-1/2" UHT, UHT HS & 8-5/8" HS HT TONG

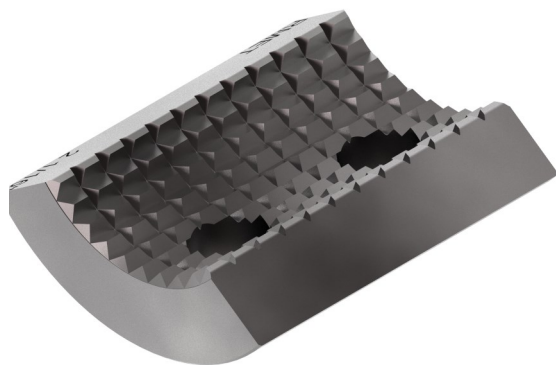
Description	Designation	Standard	KEY-GRIT	FTP	Wt.	Ref#
2-7/8" Wrap Around	Z	T107571	T107571-G1	T107571-FTP	-	107571
3-1/2" Wrap Around	Z	T107572	T107572-G1	T107572-FTP	-	107572
4" Wrap Around	Z	T107573	T107573-G1	T107573-FTP	-	107573
4-1/2" Wrap Around	Z	T106936	T106936-G1	T106936-FTP	-	106936
5" Wrap Around	Z	T107580	T107580-G1	T107580-FTP	-	107580

### DIES—5-1/2" UHT, UHT HS, 7-5/8" STD., HD, 8-5/8" HS HT, & 9-5/8" HS BACKUP

Description	Designation	Standard	KEY-GRIT	FTP	Wt.	Ref#
2-7/8" Wrap Around	ZTB	113240	113240-G1	113240-FTP	-	113240
3-1/2" Wrap Around	ZTB	113241	113241-G1	113241-FTP	-	113241
4" Wrap Around	ZTB	113242	113242-G1	113242-FTP	-	113242
4-1/2" Wrap Around	ZTB	113243	113243-G1	113243-FTP	-	113243
5" Wrap Around	ZTB	113244	113244-G1	113244-FTP	-	113244



## KELCO™ TYPE TONG DIE K-25



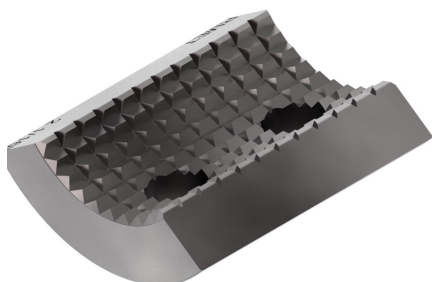
STYLE **STANDARD**



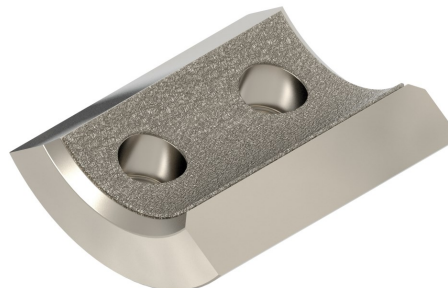
STYLE **KEY-GRIT (CRA)**

Size	Standard	KEY-GRIT	Qty.	Ref.#
<b>1" (1.315)</b>	05-120	05-120-G1	3	05-120
<b>1-1/4" (1.660)</b>	05-121	05-121-G1	3	05-121
<b>1-1/2" (1.900)</b>	05-122	05-122-G1	3	05-122
<b>1-9/16"</b>	05-130	05-130-G1	3	05-130
<b>1-13/16"</b>	05-131	05-131-G1	3	05-131
<b>2-1/16"</b>	05-123	05-123-G1	3	05-123
<b>2-1/8"</b>	05-132	05-132-G1	3	05-132
<b>2-1/4"</b>	05-133	05-133-G1	3	05-133
<b>2-3/8"</b>	05-124	05-124-G1	3	05-124
<b>2-1/2"</b>	05-125	05-125-G1	3	05-125
<b>2-11/16"</b>	05-134	05-134-G1	3	05-134
<b>2.776"</b>	05-135	05-135-G1	3	05-135
<b>2-7/8"</b>	05-128	05-128-G1	3	05-128

## KELCO™ TYPE TONG DIE K-30



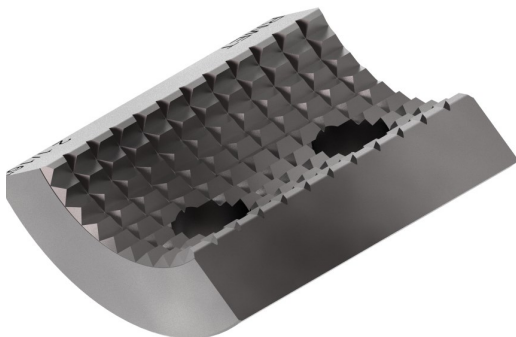
STYLE **STANDARD**



STYLE **KEY-GRIT (CRA)**

Size	Standard	KEY-GRIT	Qty.	Ref.#
1-1/4" (1.660)	06-133	06-133-G1	3	
1-1/2" (1.900)	06-134	06-134-G1	3	06-134
1-5/8"	06-162	06-162-G1	3	-
1-11/16"	06-163	06-163-G1	3	-
1-3/4"	06-164	06-164-G1	3	-
1-13/16"	06-165	06-165-G1	3	-
2"	06-166	06-166-G1	3	-
2-1/16"	06-119	06-119-G1	3	06-119
2-1/8"	06-167	06-167-G1	3	-
2-1/4"	06-168	06-168-G1	3	-
2-3/8"	06-169	06-169-G1	3	06-120
2-1/2"	06-170	06-170-G1	3	-
2-5/8"	06-142	06-142-G1	3	-
2.718"	06-171	06-171-G1	3	-
2.776"	06-172	06-172-G1	3	-
2-3/4"	06-147	06-147-G1	3	-
2-7/8"	06-121	06-121-G1	3	06-121
3"	06-135	06-135-G1	3	06-135
3-1/16"	06-122	06-122-G1	3	06-122
3-1/8"	06-123	06-123-G1	3	06-123
3-1/4"	06-124	06-124-G1	3	06-124
3-3/8"	06-130	06-130-G1	3	06-130
3-1/2"	06-125	06-125-G1	3	06-125
3-5/8"	06-174	06-174-G1	3	-
3.668"	06-126	06-126-G1	3	06-126
3.730"	06-176	06-176-G1	3	-
3.-3/4"	06-127	06-127-G1	3	06-127
3.866"	06-178	06-178-G1	3	-
3-7/8"	06-131	06-131-G1	3	06-131
4"	06-129	06-129-G1	3	-

# KELCO™ TYPE TONG DIES K-50



STYLE **STANDARD**

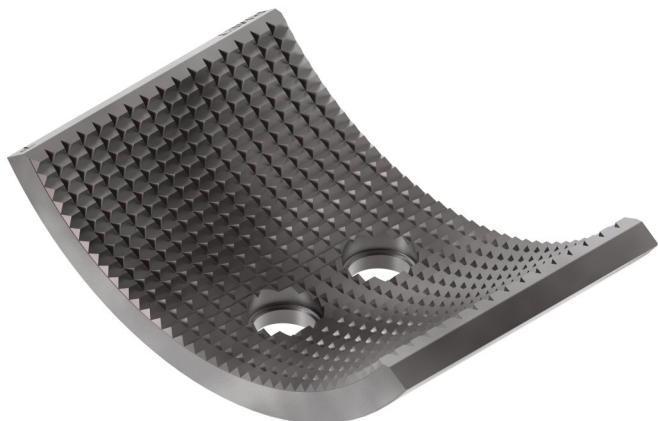


STYLE **KEY-GRIT (CRA)**

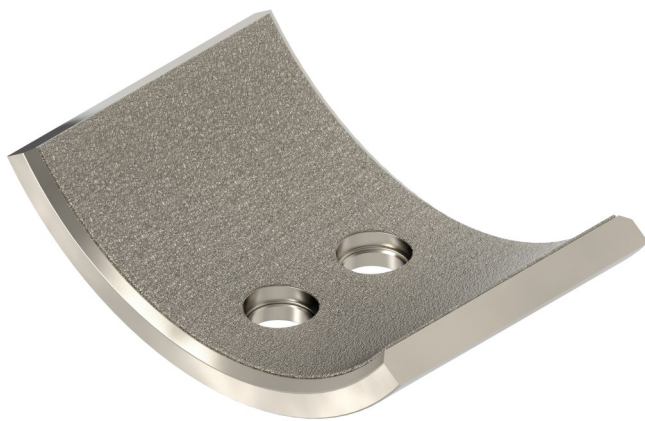
Size	Standard	KEY-GRIT	Qty.	Ref.#
2-3/8"	06-573	06-573-G1	3	06-573
2-5/8"	06-571	06-571-G1	3	06-571
2-7/8"	06-575	06-575-G1	3	06-575
3-1/8"	05-584	05-584-G1	3	06-584
3-1/4"	06-572	06-572-G1	3	06-572
3-3/8"	06-586	06-586-G1	3	06-586
3-1/2"	06-576	06-576-G1	3	06-576
3-5/8"	06-587	06-587-G1	3	06-577
3-3/4"	06-577	06-577-G1	3	06-577
3-7/8"	06-588	06-588-G1	3	06-588
4"	06-578	06-578-G1	3	06-578
4-1/16"	06-589	06-589-G1	3	06-589
4-1/8"	06-579	06-579-G1	3	06-579
4-1/4"	06-590	06-590-G1	3	06-590
4-3/8"	06-591	06-591-G1	3	06-591
4-1/2"	06-592	06-592-G1	3	06-580
4-3/4"	06-581	06-581-G1	3	06-581
4-7/8"	06-593	06-593-G1	3	06-593
5'	06-582	06-582-G1	3	06-582
5-1/4"	06-594	06-594-G1	3	06-594
5-3/8"	06-595	06-595-G1	3	06-595
5-1/2"	06-583	06-583-G1	3	06-583



# KELCO™ TYPE TONG DIES K-70



STYLE **STANDARD**



STYLE **KEY-GRIT (CRA)**

Size	Standard	KEY-GRIT	Qty	Ref.#
2-7/8"	06-773	06-773-G1	3	
3-1/2"	06-758	06-758-G1	3	06-758
3-3/4"	06-770	06-770-G1	3	-
4"	06-757	06-757-G1	3	-
4-1/2"	06-756	06-756-G1	3	06-757
4-3/4"	06-755	06-755-G1	3	06-755
4-13/16"	06-769	06-769-G1	3	-
4-15/16"	06-768	06-768-G1	3	-
5"	06-754	06-754-G1	3	06-754
5-1/4"	06-767	06-767-G1	3	-
5-1/2"	06-753	06-753-G1	3	06-753
5-3/4"	06-759	06-759-G1	3	06-759
5-7/8"	06-766	06-766-G1	3	-
6"	06-752	06-752-G1	3	06-752
6.050"	06-765	06-765-G1	3	-
6-1/8"	06-764	06-764-G1	3	-
6-1/4"	06-763	06-763-G1	3	-
6-5/16"	06-762	06-762-G1	3	-
6-1/2"	06-761	06-761-G1	3	-
6-5/8"	06-751	06-751-G1	3	06-751
6-7/8"	06-760	06-760-G1	3	-
7"	06-750	06-750-G1	3	06-750

# SPECIALTY DIES



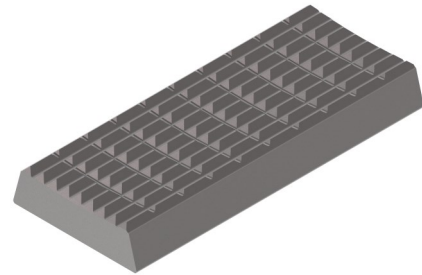
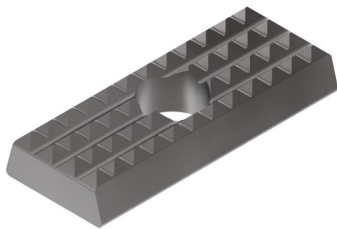
**TEDA—TONG DIES**



**BJ—CONTOUR TONG DIES**

Description	Standard	Wt.	Ref#
2.25" TD (2-3/8" - 2-7/8")	T60-78	0.21	60-78
2.25" TD (3-1/2" - 4-1/2")	T89-142	0.20	89-142
3.45" TD (2-3/8" - 2-7/8")	T73-78	0.33	73-78
3.45" TD (3-1/2" - 4-1/2")	T89-114	0.32	89-114

Description	Standard	Wt.	Ref.#
2-3/8" X 2-3/8"	T27498-1	0.54	27498-1
2-7/8" X 2-7/8"	T27494-1	0.54	27494-1

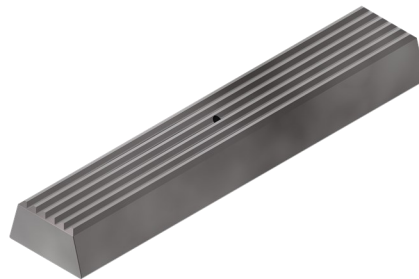
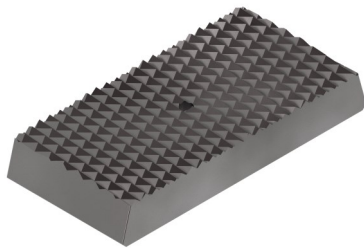


**TONG DIES "CENTER-HOLE"**

**TONG DIES "SDX-200 & HT-200"**

Size (HxWxL)	Standard	KEY-GRIT	Wt.	Ref.#
1/2" X 1-1/4" X 3"	24768-4	24768-4-G1	0.50	24768

Description	Standard	Wt.	Ref.#
SDX-200 & HT-200	33652-2	4.32	33652-2



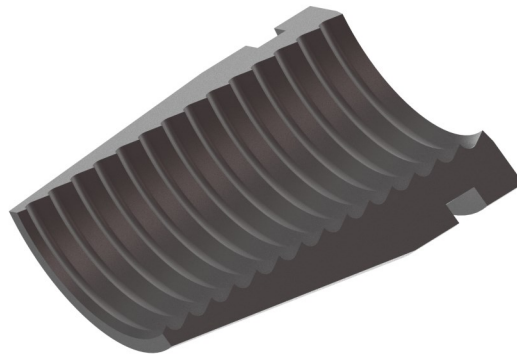
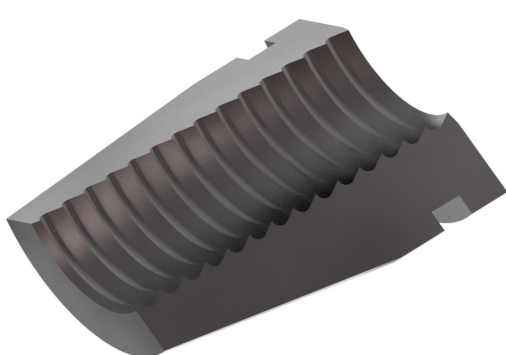
**PETOL TONG — VICE JAW**

**S-650 — BREAKOUT DIE**

**VERMEER— DIE**

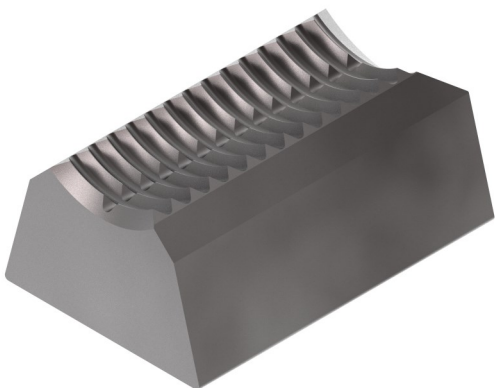
Description	Standard	Wt.	Ref#
PETOL TONG DIAMOND POINT VICE JAW	TH109D	0.48	H109D
BREAKOUT TONG DIE F/ S-650 UNIT	91004887	1.87	T91004884
VERMEER 2-5/8" DIE	230831	5.90	230831

## SPECIALTY DIES



### WIRELINE—INSERTS

Description	Standard	Wt.	Ref.#
1.125" WIRELINE INSERT ( 3 PCS. = 1 SET)	W1125	1.23	1125
1.250" WIRELINE INSERT ( 3 PCS. = 1 SET)	W1250	1.23	1250
1.375" WIRELINE INSERT ( 3 PCS. = 1 SET)	W1375	1.23	1375
1.500" WIRELINE INSERT ( 3 PCS. = 1 SET)	W1500	1.23	1500



### COIL TUBING—MYT/YT INSERTS

### COIL TUBING—TS-100 INSERTS

Size	Pipe Size	Standard	Wt.	Ref.#
2-7/8"	1.00"	29259-2	1.75	A29259-2
2-7/8"	1.25"	29259-3	1.70	A29259-3
2-7/8"	1.50"	29259-4	1.50	A29259-4
2-7/8"	1.75"	29359-5	1.38	A29359-5
2-7/8"	2.00"	29259-6	1.25	A29259-6

Size	Pipe Size	Standard	Wt.	Ref.#
3-1/2"	1.00"	21-121	1.75	A21-121
3-1/2"	1.25"	21-120	1.70	A21-120
3-1/2"	1.50"	21-119	1.50	A21-119
3-1/2"	1.75"	21-117	1.38	A21-117
3-1/2"	2.00"	21-111	1.25	A21-111

# TYPE C, T, MP, & MPR SAFETY CLAMP INSERTS



STYLE **STANDARD**



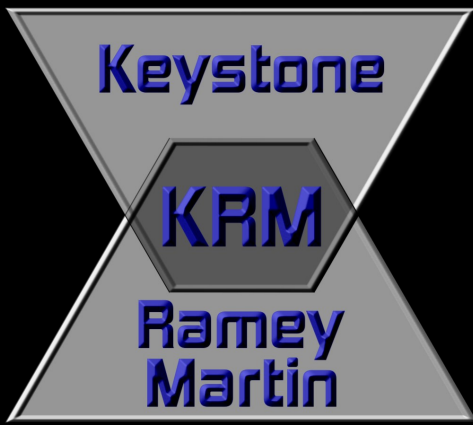
STYLE **KEY-GRIT (CRA)**

Type	Standard	KEY-GRIT	Wt.	Ref.#
<b>C</b>	12-103	12-103-G1	1.12	7624-A-4
<b>T</b>	11-103	11-103-G1	0.25	7624-A-21
<b>MP</b>	31-310	31-310-G1	1.50	3333
<b>MPR</b>	31-333	31-333-G1	1.55	3310



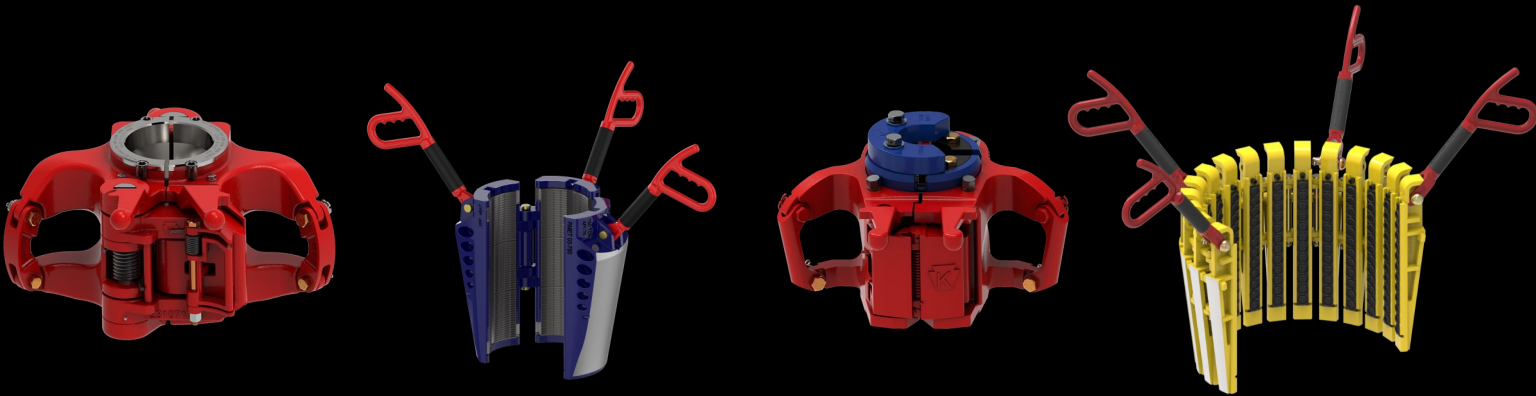
## TRADEMARK INFORMATION

TRADEMARK INFORMATION	
Name	Owner
Varco®	is a trademark of National Oilwell Varco
Varco BJ®	is a trademark of National Oilwell Varco
Cavins®	registered trademark of Cavin's Oilwell Tools
GRITFACE®	is a trademark of McCoy Global Inc.
CLINCHER®	is a trademark of McCoy Global Inc.
LOCKJAW®	is a trademark of McCoy Global Inc.
Baash-Ross®	is a trademark of National Oilwell Varco
Hillman-Kelly™	is a trademark of National Oilwell Varco
Web Wilson™	is a trademark of National Oilwell Varco
Kelco™	is a trademark of National Oilwell Varco
BJ®	is a trademark of National Oilwell Varco
Eckel®	is a trademark of Eckel Manufacturing, Inc.
Woolley®	is a trademark of National Oilwell Varco
Oil Country®	is a trademark of Weatherford International
Hydra-Rig®	is a trademark of National Oilwell Varco

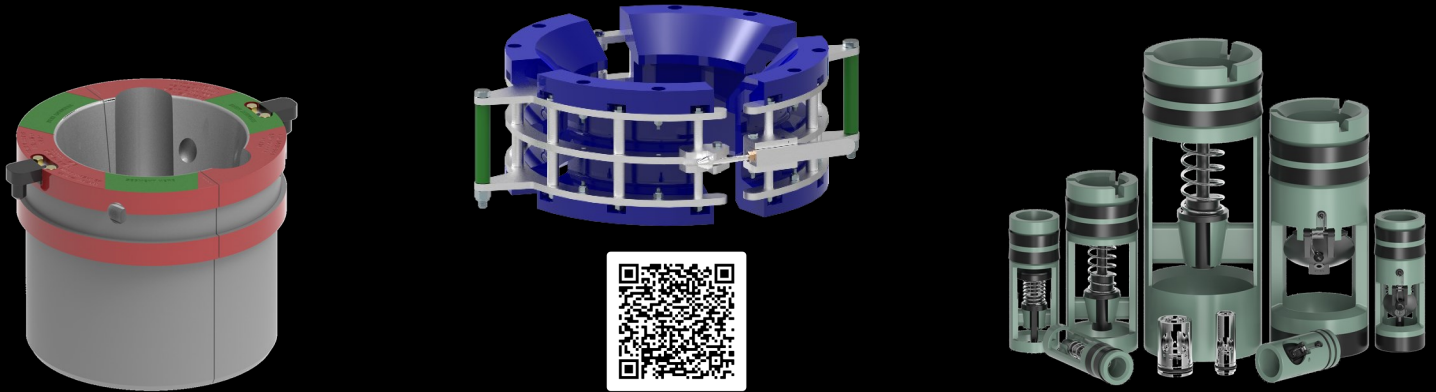


QUALITY DELIVERED  
**MADE IN AMERICA**

**CONTACT US TO LEARN ABOUT KRM PRODUCTS.**



**SCAN THE QR CODE BELOW TO DOWNLOAD OUR OTHER PRODUCT CATALOGS.**



**CONTACT US AT EITHER OF OUR LOCATIONS**

**HOBBS, NM**

**Keystone Ramey Martin**

516 E. Broadway St.

Hobbs, New Mexico 88240

**Office:** 1-575-964-8944

**Sales Inquiries:**

nmsales@krmsupply.com

**HOUMA, LA**

**Keystone Ramey Martin**

4794 Freedom Road

Houma, Louisiana 70360

**Office:** 1-985-346-6205

**Sales Inquiries:**

sales@krmsupply.com

**LONGVIEW, TX**

**Keystone Ramey Martin**

113 West Pliier Precise Rd. Unit D

Longview, TX 75601

**Office:** 1-430-625-7122

**Sales Inquiries:**

txsales@krmsupply.com