

# Weems Galleries and Framing

**Louisiana Plaza**  
7200 Montgomery Blvd NE Ste D  
Albuquerque, NM 87109  
505.293.6133 fax 505.294.6494

**Old Town Plaza Don Luis**  
303 Romero NW  
Albuquerque, NM 87104  
505.764.0302

email: [weems@weemsgallery.com](mailto:weems@weemsgallery.com) - web site: [www.weemsgallery.com](http://www.weemsgallery.com)

## Sally Bartos

I live with my kids and our many animals in the east mountains of New Mexico near a tiny town called Edgewood. Here we raise my granddaughter, an over-abundant garden, Newfoundland and Great Dane puppies and a small herd of goats.



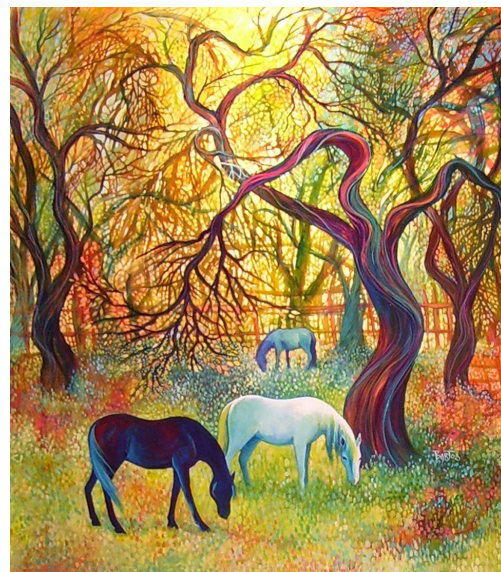
We are on 10 acres of gorgeous high desert.

Coyotes keep us awake at night with their yodeling and mama and pappa red-tailed hawk have raised their

young in the pinon forest in our backyard. We have crows and rabbits, rattlesnakes, flaming sunsets and incredible stars at night.

I'm self-taught, but I come from a family of painters and photographers, sculptors, carvers, tailors, musicians, writers and archaeologists. I think they had a little to do with my education! I was fortunate enough to be raised on the Navajo Reservation in beautiful Arizona, so that was a great influence on me and my work as well.

Sally Bartos



The landscapes and horses are all recent inspirations given by my life here in the beautiful east mountains of New Mexico. The cobalt-blue mountains and the green-gold grasslands, set against a background of billowing white clouds against the clean, deep blue skies keep me yearning to get home to my easel!

Please enjoy my work and thank you for your interest.

