



# JUDICIARY OF CHUUK STATE

FEDERATED STATES OF MICRONESIA



2015

ANNUAL REPORT



**2015**

**CHUUK STATE JUDICIARY**

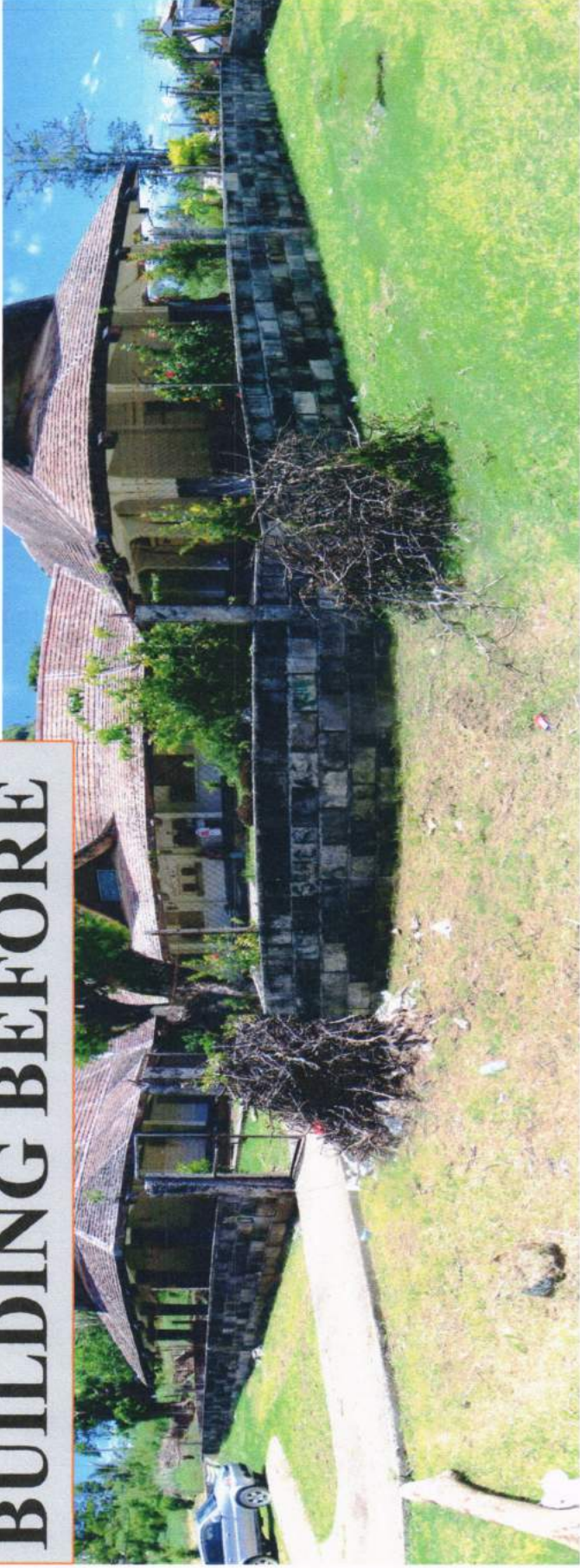
**ANNUAL REPORT**

**CHUUK STATE SUPREME COURT**

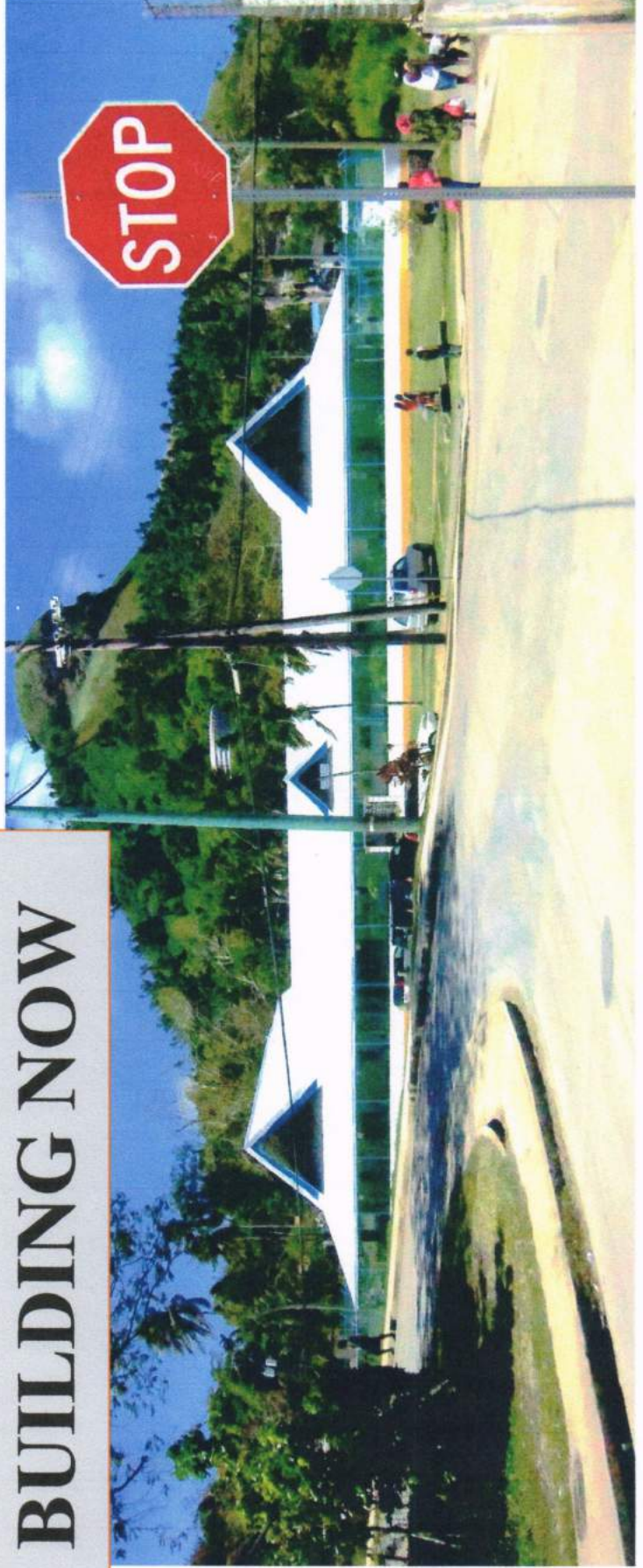
**By: Camillo Noked  
Chief Justice**



# BUILDING BEFORE



# BUILDING NOW







*Camillo Noket  
Chief Justice*

# Chuuk State Judiciary Supreme Court of Chuuk State

P.O. Box 187  
Chuuk State, Federated States of Micronesia 96942  
Chuukssc.org Telephone (691) 330-2717/2229



**Ran Annim! I am pleased to provide you a copy of the 2015 Annual Report of the Supreme Court of Chuuk State, Judiciary of Chuuk State. The Annual Report contains Judicial activities, useful statistics, program summaries, events and activities.**

**As the third co-equal branch of Chuuk State Government, the Judiciary is focused on Providing effective and efficient services to the people of Chuuk and FSM. Over the last Few years, we have taken a leading role in the modernization and improvement of services Despite of long absence of number of judges due to illness, declining budgets and new Approaches in the administration of justice.**

**I humbly invite you to review the report and thank you for your continuing interest in Justice.**

**Fakkun Kinisou Chapur, Pwan Tirow,**

A handwritten signature in blue ink, appearing to read "Camillo Noket".

**Camillo Noket**



# CONTENTS

	Pages
<b>1. Personnel Listing of Judges and Staff</b>	<b>1</b>
<b>2. Administrative Organization Structure</b>	<b>2</b>
<b>3. Judicial Organization Structure</b>	<b>3</b>
<b>4. Report Chart for 2007 to 2015</b>	<b>4- 6</b>
<b>5. Cases Statistical Reports for each year beginning 2007 to 2015 Trial Division</b>	<b>7- 10</b>
<b>6. Report Chart for month of January to December 2015</b>	<b>11</b>
<b>7. Case Statistical Report for each month beginning January to December 2015</b>	<b>12- 16</b>
<b>8. Summary Statistical Report for year 2015</b>	<b>17</b>
<b>9. Statistical Case Report Summary</b>	<b>18</b>
<b>10. Summary Statistics of Criminal Cases by type from 2007 to 2015</b>	<b>19- 23</b>
<b>11. Statistics Report – Appellate Division</b>	<b>24</b>
<b>12. Total Fees and Fines Collection Report for each year beginning with the year 2007 to 2015</b>	<b>25</b>
<b>13. Monthly fees and fines collection each year beginning with the year 2007 to 2015</b>	<b>26- 34</b>
<b>14. Chuuk State Judiciary Branch Operating Budgets from FY 2007 – 2015</b>	<b>35</b>
<b>15. Charts for Chuuk State Government Operating Budgets for FY 2015</b>	<b>36– 39</b>



## CHIEF JUSTICE & ASSOCIATES JUDGES:



**Associate Justice  
Hon. Keske Marar  
since 1985 - 2015**



**Associate Justice  
Hon. Midasy O. Aisek  
Since 2005-Present**



**Associate Justice  
Hon. Repeat Samuel  
Since 2008 - Present**

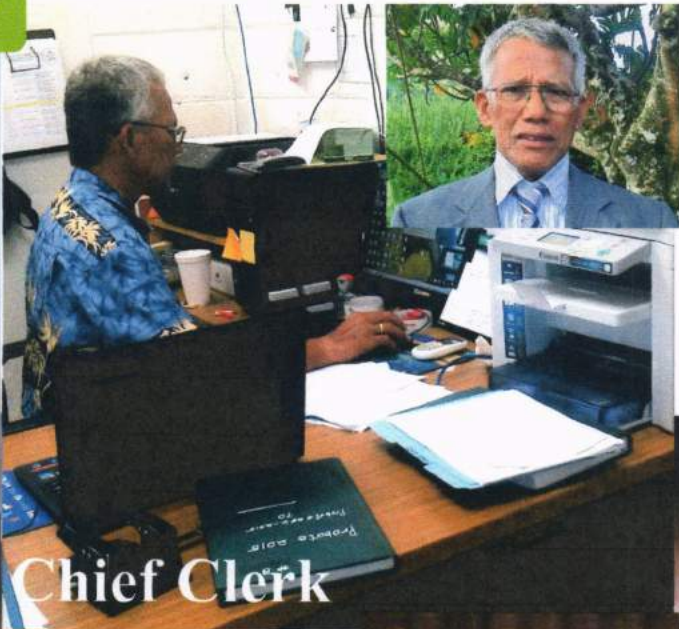


**Associate Justice  
Hon. Jayson Robert  
Since 2013 - Present**





# Administrators/Directors



Chief Clerk



Probation Officer



Law Clerk

# Assistant Clerks





CHUUK STATE JUDICIARY

2015 ANNUAL REPORT

PERSONNEL

**JUSTICES**

**Date of Employment**

Camillo Noket	Chief Justice	10/06/2006
Keske S. Marar	Associate Justice (deceased/12/15/15)	5/28/1984
Midasy O. Aisek	Associate Justice	11/22/2006
Repeat Samuel	Associate Justice	6/14/2010
Jayson Robert	Associate Justice	6/14/2013

**COURT'S ADMINISTRATIVE STAFF**

Isauo Kuena	Director of Administration	2/11/1991
Willy Weita	Court Marshal	1/28/2015
Asano Arithos	Bailiff	3/26/2007
Scarno Fiti	Bailiff	5/22/1995
Marciano Waren	Bailiff	5/18/2009
Elden Nowell	Maintenance	11/9/1992

**COURT'S JUDICIAL STAFF**

Kency K. Conrad	Chief Clerk of Courts	5/16/1999
Anderson Nowell	Assistant Clerk of Court	4/20/2011
Peterson Chutin	Assistant Clerk of Court	4/25/2013
Jerry Robert	Assistant Clerk of Court	5/05/2014
Bensita Sander	Assistant Clerk of Court	10/23/2013

**COURT JUDICIAL ASSISTANTS**

Masiko Sipenuk	Chief Justice's Judicial Assistant	5/25/2009
Iasinta Samo	Assistant Justice's Judicial Assistant	5/10/1987
Misiko Eymore	Assistant Justice's Judicial Assistant	1/14/1991
Jacinta Edwin	Assistant Justice's Judicial Assistant	6/30/2011
Marimba Hamo	Assistant Justice's Judicial Assistant	10/21/2013

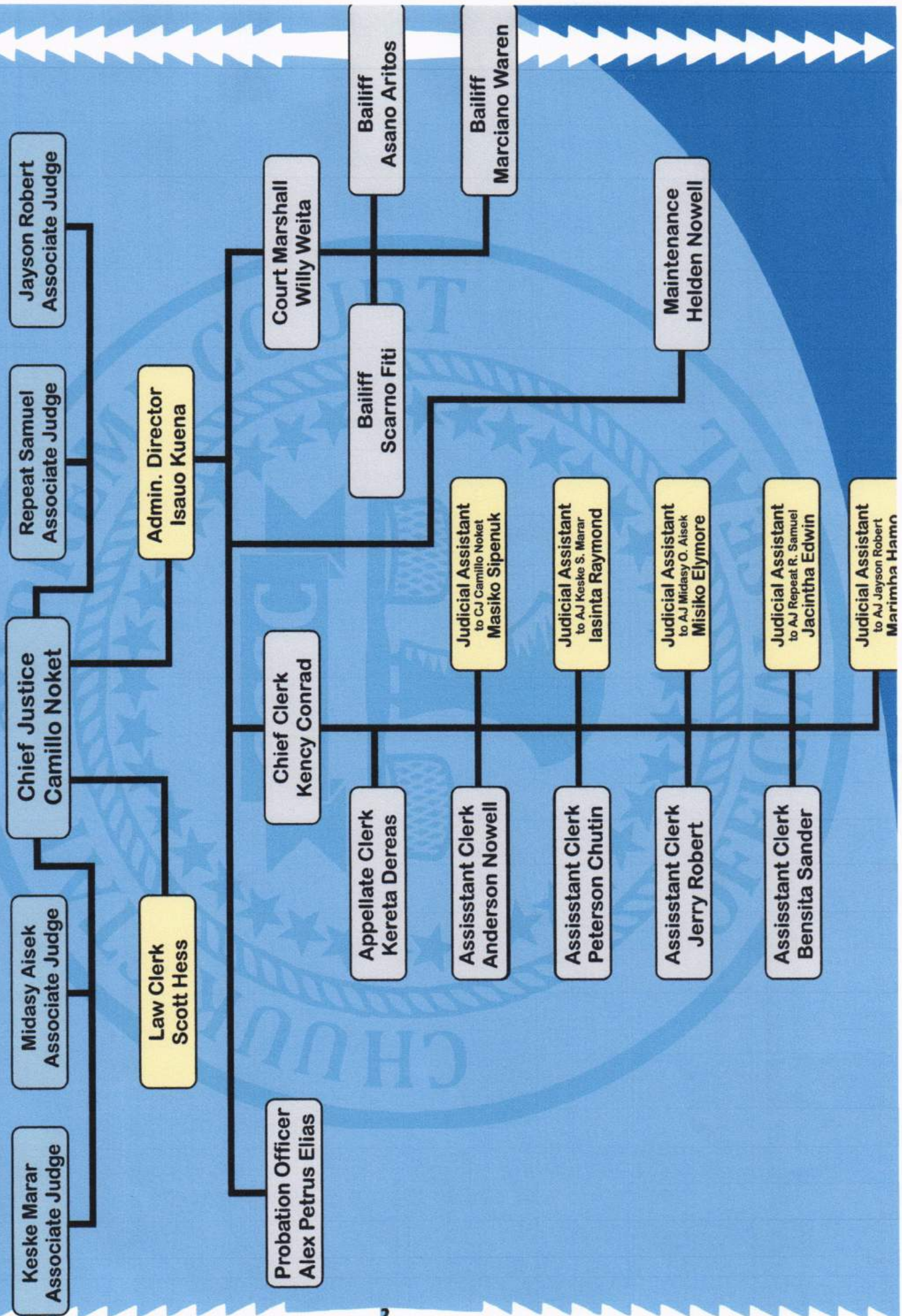
**OTHERS**

Alex Petrus	Probation Officer	1/25/1999
Scott Hess	Court's Attorney (2yrs. Contract)	6/10/2015





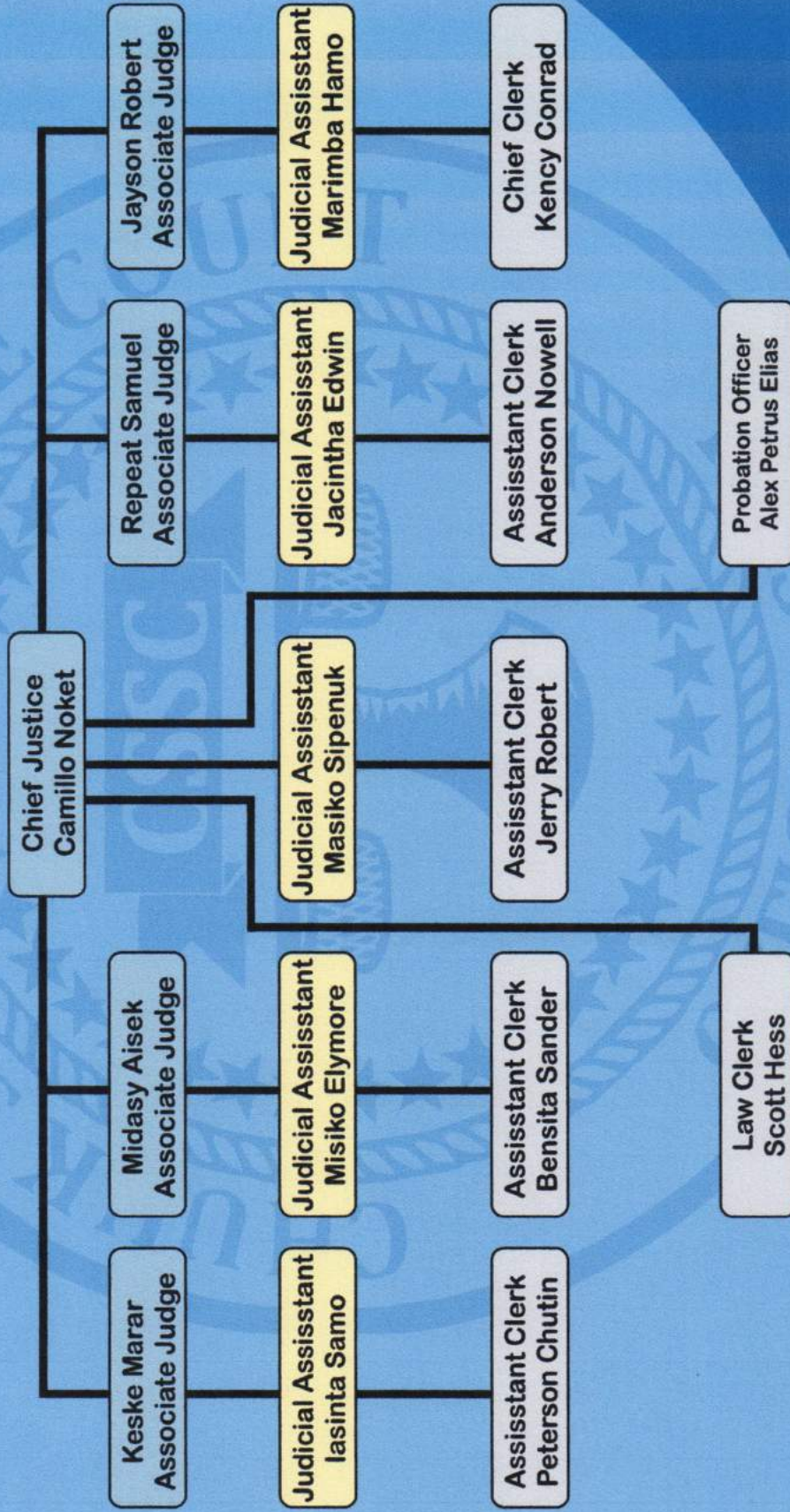
# Chuuk State Supreme Court Administrative Organization Structure





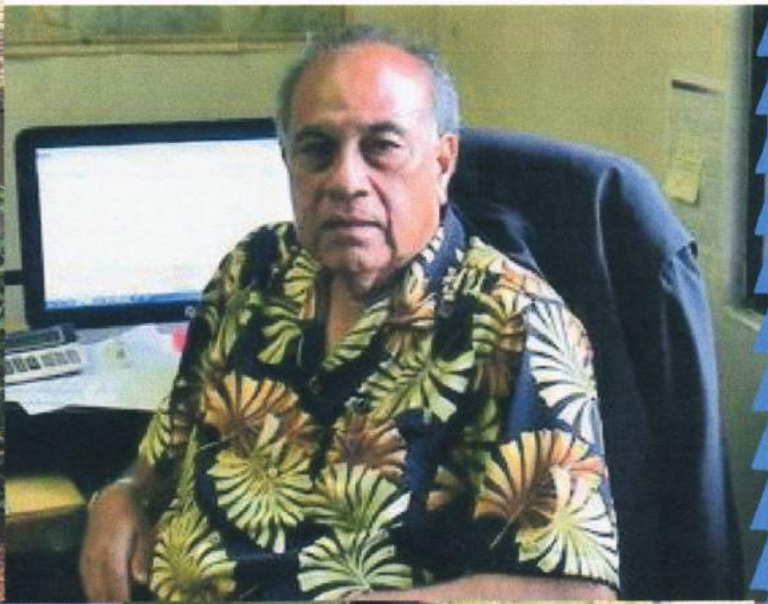


# Chuuk State Supreme Court Judicial Organization Structure



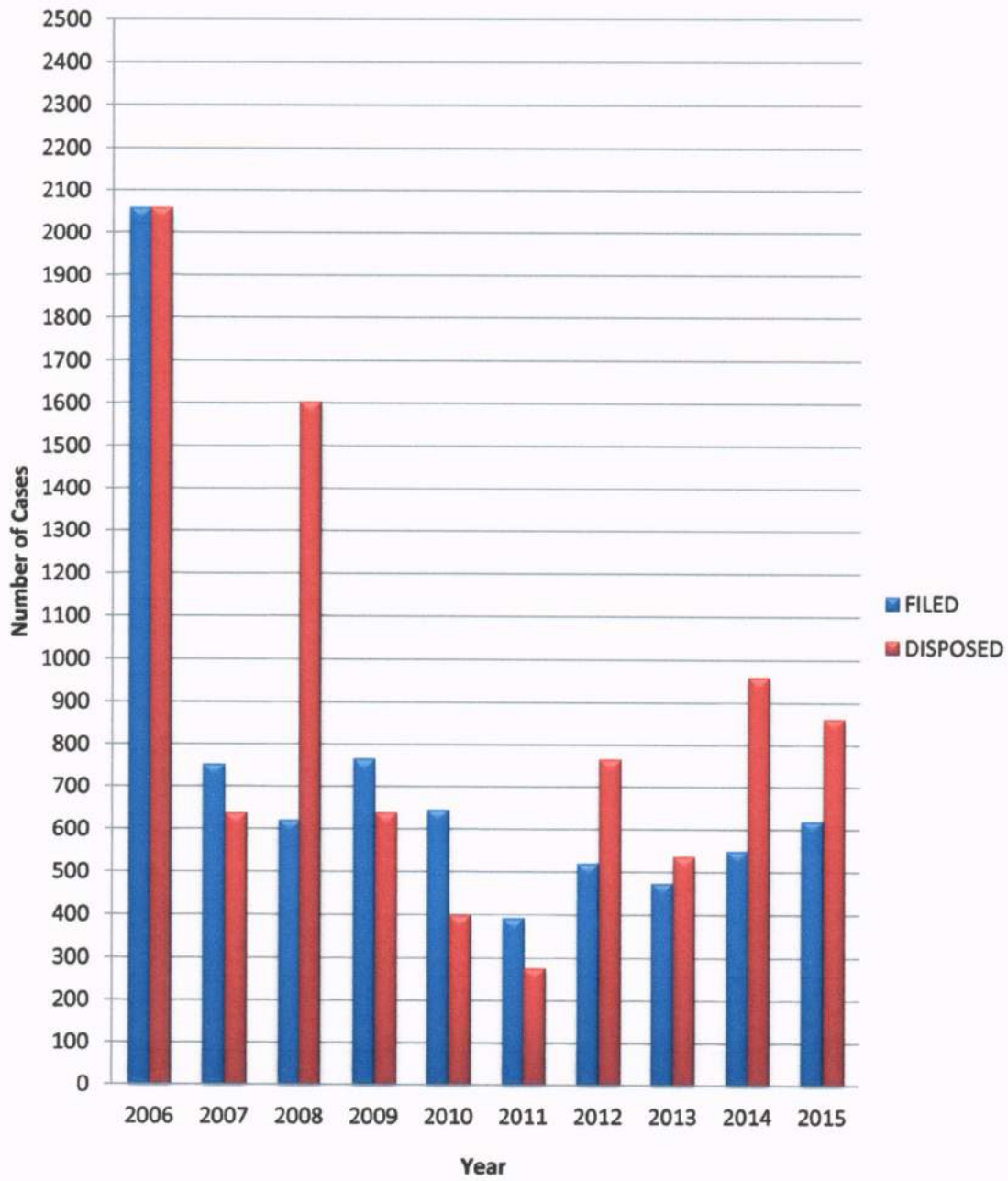


# Court Staffs:



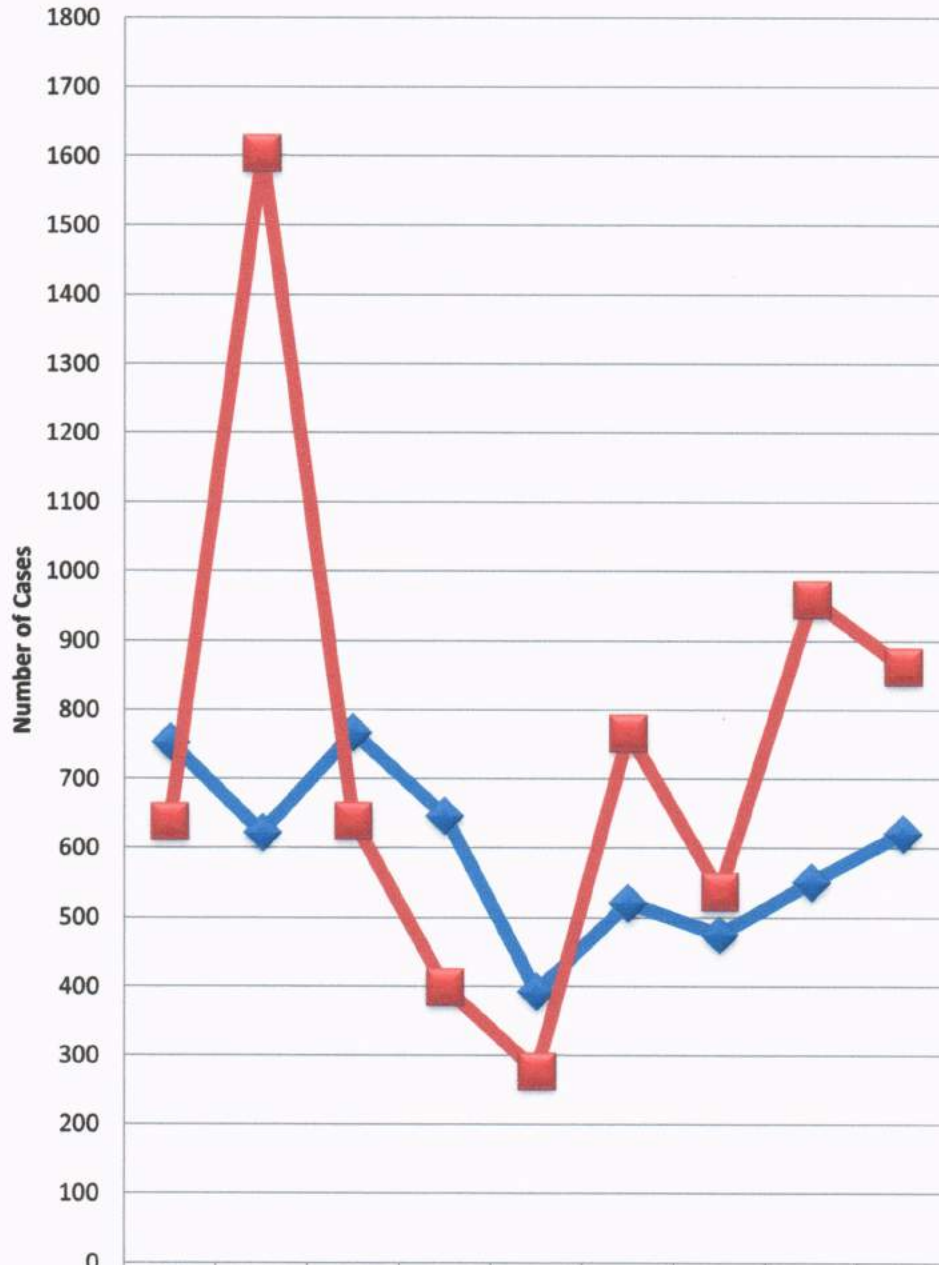


**Judiciary General Report**  
**From Yr. 2007 - 2015**  
**Chuuk State Supreme Court, Weno Chuuk 96942**





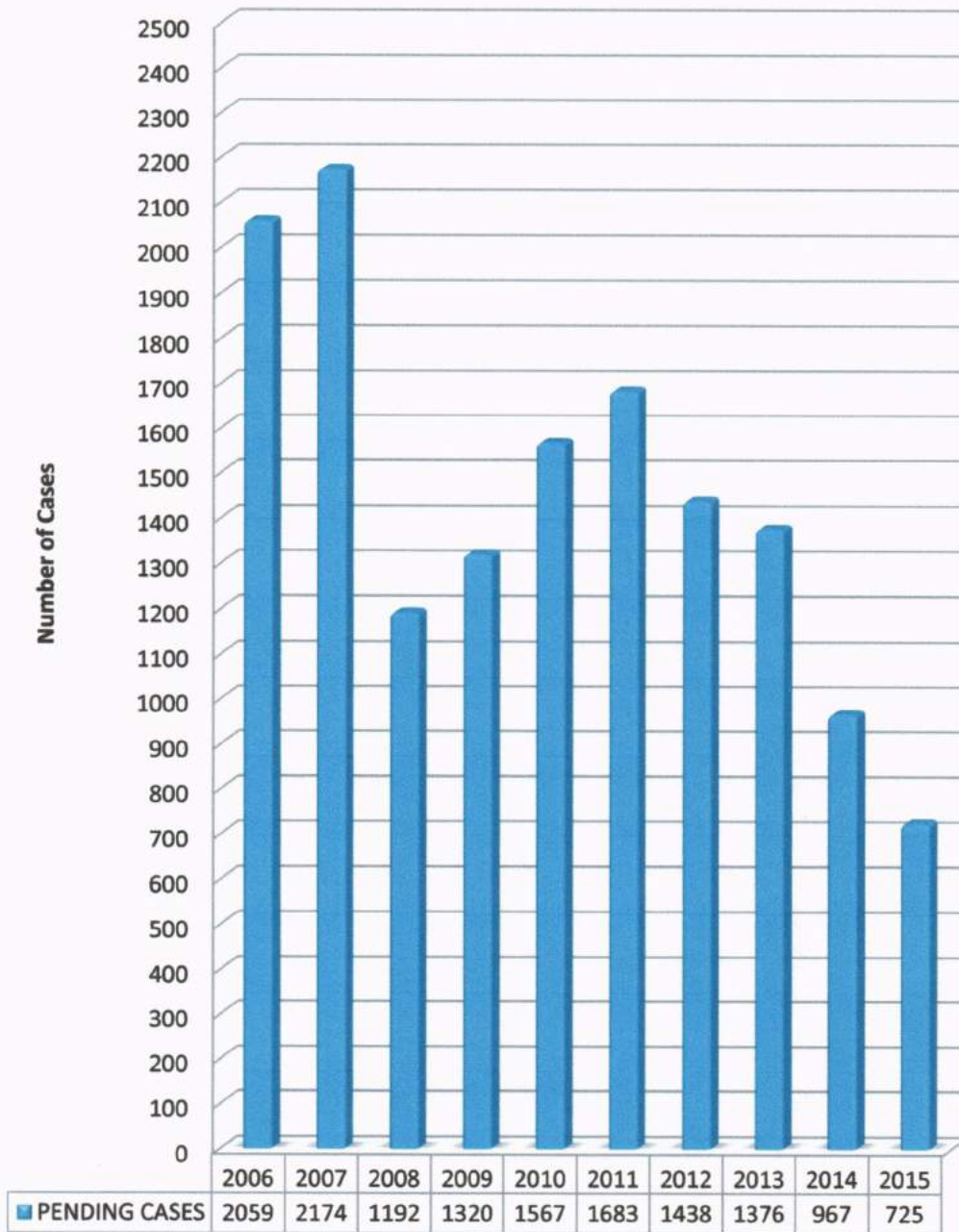
**Judiciary General Report**  
**From Yr. 2007- 2015**  
**Chuuk State Supreme Court, Weno Chuuk 96942**  
**Filed & Disposed Cases**



	2007	2008	2009	2010	2011	2012	2013	2014	2015
FILED	753	622	767	646	393	521	475	551	621
DISPOSED	638	1604	639	399	277	766	537	960	863

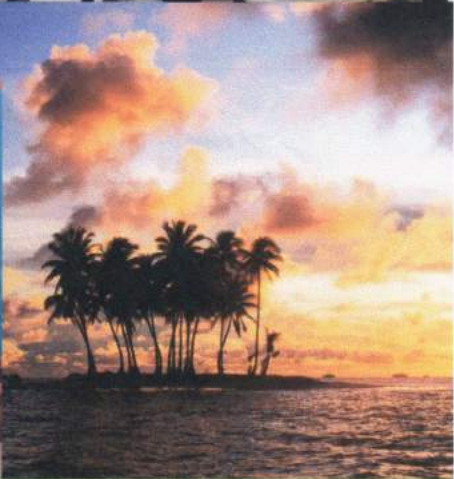


**Judiciary General Report**  
**From Yr. 2007 - 2015**  
**Chuuk State Supreme Court, Weno Chuuk 96942**  
**Pending Cases**





COURT ACTIVITY





JUDICIARY GENERAL REPORT FROM YR 2007 - 2015  
 CHUUK STATE SUPREME COURT  
 TRIAL DIVISION, WENO CHUUK STATE

CALENDAR YEAR 2007

TYPE OF CASES	PENDING Cases AS OF 12/31/2006	CASES FILED FROM 1/1/12/31/07 (+)	CASES DISPOSED FROM 1/1/12/31/07 (-)	TOTAL CASES PENDING AS OF 12/31/2007
CRIMINAL	354	210	143	421
CIVIL	488	153	178	463
TRAFFIC	1,129	330	257	1,202
JUVENILE	14	10	10	14
PROBATE	74	50	50	74
<b>TOTAL</b>	<b>2,059</b>	<b>753</b>	<b>638</b>	<b>2,174</b>

CALENDAR YEAR 2008

TYPE OF CASES	PENDING Cases AS OF 12/31/2007	CASES FILED FROM 1/1-12/31/08 (+)	CASES DISPOSED FROM 1/1-12/31/08 (-)	TOTAL CASES PENDING AS OF 12/31/2008
CRIMINAL	421	187	151	457
CIVIL	463	135	156	442
TRAFFIC	1,202	248	1,260	190
JUVENILE	14	8	3	19
PROBATE	74	44	34	84
<b>TOTAL</b>	<b>2,174</b>	<b>622</b>	<b>1,604</b>	<b>1,192</b>

CALENDAR YEAR 2009

TYPE OF CASES	PENDING Cases AS OF 12/31/2008	CASES FILED FROM 1/1-12/31/09 (+)	CASES DISPOSED FROM 1/1-12/31/09 (-)	TOTAL CASES PENDING AS OF 12/31/2009
CRIMINAL	457	209	77	589
CIVIL	442	127	186	383
TRAFFIC	190	378	325	243
JUVENILE	19	6	3	22
PROBATE	84	47	48	83
<b>TOTAL</b>	<b>1,192</b>	<b>767</b>	<b>639</b>	<b>1,320</b>



**JUDICIARY GENERAL REPORT FROM YR 2007 - 2015**  
**CHUUK STATE SUPREME COURT**  
**TRIAL DIVISION, WENO CHUUK STATE**

**CALENDAR YEAR 2010**

<b>TYPE OF CASES</b>	<b>PENDING Cases AS OF 12/31/2009</b>	<b>CASES FILED FROM 1/1-12/31/10 (+)</b>	<b>CASES DISPOSED FROM 1/1-12/31/10 (-)</b>	<b>TOTAL CASES PENDING AS OF 12/31/2010</b>
CRIMINAL	589	185	112	662
CIVIL	383	142	102	423
TRAFFIC	243	247	146	344
JUVENILE	22	15	2	35
PROBATE	83	57	37	103
<b>TOTAL</b>	<b>1,320</b>	<b>646</b>	<b>399</b>	<b>1,567</b>

**CALENDAR YEAR 2011**

<b>TYPE OF CASES</b>	<b>PENDING Cases AS OF 12/31/2010</b>	<b>CASES FILED FROM 1/1-12/31/11 (+)</b>	<b>CASES DISPOSED FROM 1/1-12/31/11 (-)</b>	<b>TOTAL CASES PENDING AS OF 12/31/2011</b>
CRIMINAL	662	129	70	721
CIVIL	423	131	86	468
TRAFFIC	344	84	78	350
JUVENILE	35	3	0	38
PROBATE	103	46	43	106
<b>TOTAL</b>	<b>1,567</b>	<b>393</b>	<b>277</b>	<b>1,683</b>

**CALENDAR YEAR 2012**

<b>TYPE OF CASES</b>	<b>PENDING Cases AS OF 12/31/2011</b>	<b>CASES FILED FROM 1/1-12/31/12 (+)</b>	<b>CASES DISPOSED FROM 1/1-12/31/12 (-)</b>	<b>TOTAL CASES PENDING AS OF 12/31/2012</b>
CRIMINAL	721	211	328	604
CIVIL	468	129	137	460
TRAFFIC	350	89	205	234
JUVENILE	38	23	16	45
PROBATE	106	69	80	95
<b>TOTAL</b>	<b>1,683</b>	<b>521</b>	<b>766</b>	<b>1,438</b>



JUDICIARY GENERAL REPORT FROM YR 2007 - 2015  
 CHUUK STATE SUPREME COURT  
 TRIAL DIVISION, WENO CHUUK STATE

CALENDAR YEAR 2013

TYPE OF CASES	PENDING Cases AS OF 12/31/2012	CASES FILED FROM 1/1-12/31/13 (+)	CASES DISPOSED FROM 1/1-12/31/13 (-)	TOTAL CASES PENDING AS OF 12/31/2013
CRIMINAL	604	113	183	534
CIVIL	460	174	155	479
TRAFFIC	234	127	145	216
JUVENILE	45	4	2	47
PROBATE	95	57	52	100
<b>TOTAL</b>	<b>1,438</b>	<b>475</b>	<b>537</b>	<b>1,376</b>

CALENDAR YEAR 2014

TYPE OF CASES	PENDING Cases AS OF 12/31/2013	CASES FILED FROM 1/1-12/31/14 (+)	CASES DISPOSED FROM 1/1-12/31/14 (-)	TOTAL CASES PENDING AS OF 12/31/2014
CRIMINAL	534	86	329	291
CIVIL	479	198	311	366
TRAFFIC	216	183	198	201
JUVENILE	47	7	30	24
PROBATE	100	77	92	85
<b>TOTAL</b>	<b>1,376</b>	<b>551</b>	<b>960</b>	<b>967</b>

*Revised Report for Calendar year 2014*



JUDICIARY GENERAL REPORT FROM YR 2007 - 2015  
 CHUUK STATE SUPREME COURT  
 TRIAL DIVISION, WENO CHUUK STATE

CALENDAR YEAR 2015

TYPE OF CASES	PENDING Cases AS OF 12/31/2014	CASES FILED FROM 1/1-12/31/15 (+)	CASES DISPOSED FROM 1/1-12/31/15 (-)	TOTAL CASES PENDING AS OF 12/31/2015
CRIMINAL	291	135	217	209
CIVIL	366	176	225	317
TRAFFIC	201	213	300	114
JUVENILE	24	19	17	26
PROBATE	85	78	104	59
<b>TOTAL</b>	<b>967</b>	<b>621</b>	<b>863</b>	<b>725</b>



## Judges Training



## Clerks & Judicial Assistant Train-

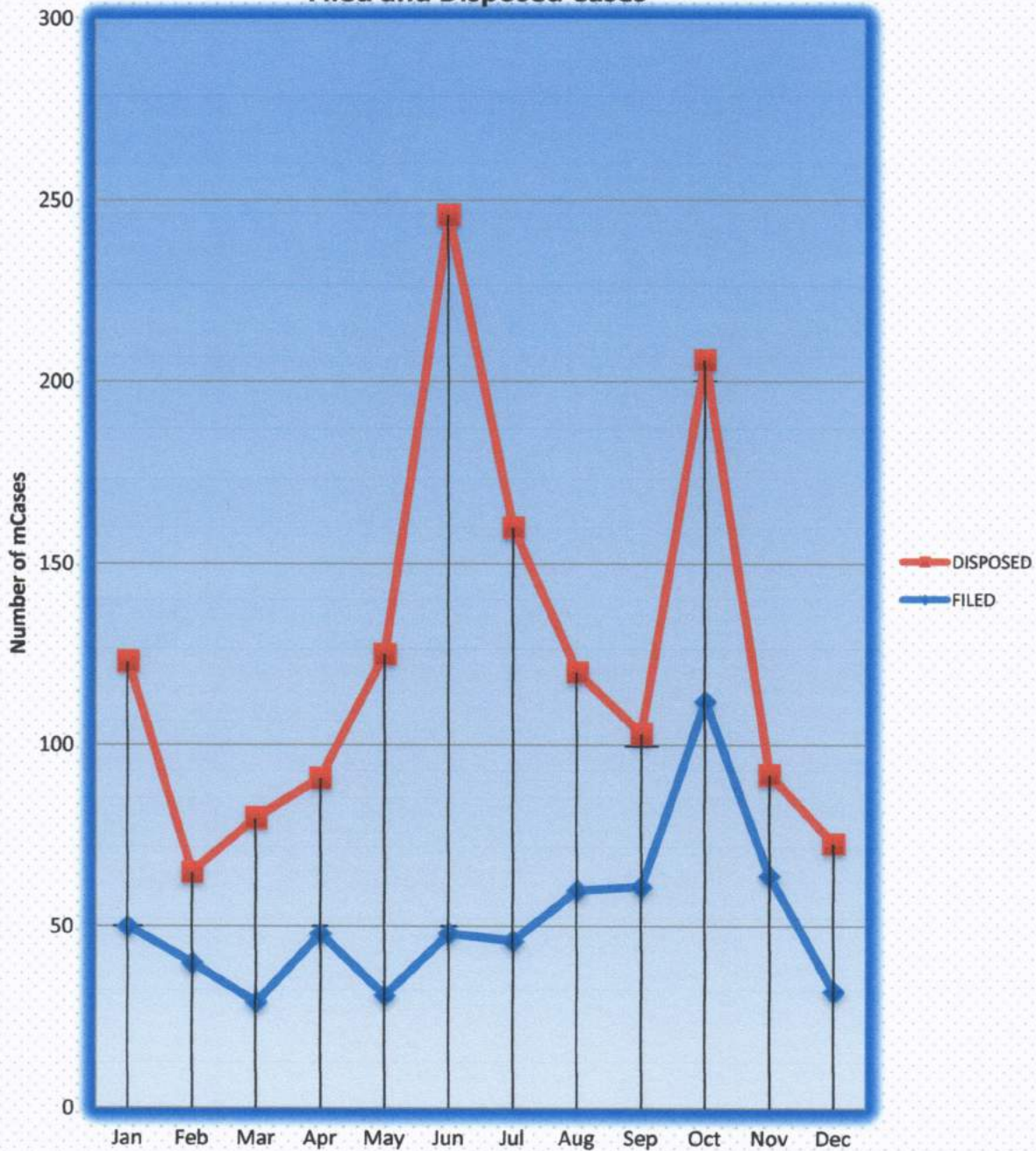


## Bailiffs & Court Marshall Training





**Judiciary General Report for  
Year 2015  
Chuuk State Supreme Court, Weno Chuuk FSM 96942  
Report Chart for Year 2015  
Filed and Disposed Cases**





JUDICIARY GENERAL REPORT FOR CALENDAR YR 2015  
 CHUUK STATE SUPREME COURT  
 TRIAL DIVISION, WENO CHUUK STATE

CALENDAR MONTH OF JANUARY 2015

TYPE OF CASES	PENDING Cases AS OF 12/31/2014	CASES FILED FROM 1/1-31/2015 (+)	CASES DISPOSED FROM 1/1-31/2015 (-)	TOTAL CASES PENDING AS OF 01/31/2015
CRIMINAL	291	7	43	255
CIVIL	366	12	12	366
TRAFFIC	201	3	8	196
JUVENILE	24	2	0	26
PROBATE	85	26	10	101
<b>TOTAL</b>	<b>967</b>	<b>50</b>	<b>73</b>	<b>944</b>

CALENDAR MONTH OF FEBRUARY 2015

TYPE OF CASES	PENDING Cases AS OF 1/31/2015	CASES FILED FROM 02/1-28/2015 (+)	CASES DISPOSED FROM 02/1-28/2015 (-)	TOTAL CASES PENDING AS OF 02/28/2015
CRIMINAL	255	5	7	253
CIVIL	366	14	8	372
TRAFFIC	196	18	7	207
JUVENILE	26	0	0	26
PROBATE	101	3	3	101
<b>TOTAL</b>	<b>944</b>	<b>40</b>	<b>25</b>	<b>959</b>

CALENDAR MONTH OF MARCH 2015

TYPE OF CASES	PENDING Cases AS OF 2/28/2015	CASES FILED FROM 03/1-31/2015 (+)	CASES DISPOSED FROM 03/1-31/2015 (-)	TOTAL CASES PENDING AS OF 03/31/2015
CRIMINAL	253	3	31	225
CIVIL	372	10	8	374
TRAFFIC	207	15	10	212
JUVENILE	26	0	0	26
PROBATE	101	1	2	100
<b>TOTAL</b>	<b>959</b>	<b>29</b>	<b>51</b>	<b>937</b>



**CALENDAR MONTH OF APRIL 2015**

<b>TYPE OF CASES</b>	<b>PENDING Cases AS OF 3/31/2015</b>	<b>CASES FILED FROM 4/1-30/2015 (+)</b>	<b>CASES DISPOSED FROM 4/1-30/2015 (-)</b>	<b>TOTAL CASES PENDING AS OF 04/30/2015</b>
CRIMINAL	225	8	7	226
CIVIL	374	22	17	379
TRAFFIC	212	8	8	212
JUVENILE	26	0	0	26
PROBATE	100	10	11	99
<b>TOTAL</b>	937	48	43	942

**CALENDAR MONTH OF MAY 2015**

<b>TYPE OF CASES</b>	<b>PENDING Cases AS OF 4/30/2015</b>	<b>CASES FILED FROM 5/1-31/2015 (+)</b>	<b>CASES DISPOSED FROM 5/1-31/2015 (-)</b>	<b>TOTAL CASES PENDING AS OF 5/31/2015</b>
CRIMINAL	226	7	9	224
CIVIL	379	9	25	363
TRAFFIC	212	11	50	173
JUVENILE	26	0	7	19
PROBATE	99	4	3	100
<b>TOTAL</b>	942	31	94	879

**CALENDAR MONTH OF JUNE 2015**

<b>TYPE OF CASES</b>	<b>PENDING Cases AS OF 5/31/2015</b>	<b>CASES FILED FROM 6/1-30/2015 (+)</b>	<b>CASES DISPOSED FROM 6/1-30/2015 (-)</b>	<b>TOTAL CASES PENDING AS OF 6/30/2015</b>
CRIMINAL	224	10	50	184
CIVIL	363	17	16	364
TRAFFIC	173	9	94	88
JUVENILE	19	5	6	18
PROBATE	100	7	32	75
<b>TOTAL</b>	879	48	198	729



**CALENDAR MONTH OF JULY 2015**

<b>TYPE OF CASES</b>	<b>PENDING Cases AS OF 6/30/2015</b>	<b>CASES FILED FROM 7/1-31/2015 (+)</b>	<b>CASES DISPOSED FROM 7/1-31/2015 (-)</b>	<b>TOTAL CASES PENDING AS OF 7/31/2015</b>
CRIMINAL	184	23	41	166
CIVIL	364	14	48	330
TRAFFIC	88	2	13	77
JUVENILE	18	1	2	17
PROBATE	75	6	10	71
<b>TOTAL</b>	729	46	114	<b>661</b>

**CALENDAR MONTH OF AUGUST 2015**

<b>TYPE OF CASES</b>	<b>PENDING Cases AS OF 7/31/2015</b>	<b>CASES FILED FROM 8/1-31/2015 (+)</b>	<b>CASES DISPOSED FROM 8/1-31/2015 (-)</b>	<b>TOTAL CASES PENDING AS OF 8/31/2015</b>
CRIMINAL	166	15	10	171
CIVIL	330	13	20	323
TRAFFIC	77	28	19	86
JUVENILE	17	1	1	17
PROBATE	71	3	10	64
<b>TOTAL</b>	661	60	60	<b>661</b>

**CALENDAR MONTH OF SEPTEMBER 2015**

<b>TYPE OF CASES</b>	<b>PENDING Cases AS OF 8/31/2015</b>	<b>CASES FILED FROM 9/1-30/2015 (+)</b>	<b>CASES DISPOSED FROM 9/1-30/2015 (-)</b>	<b>TOTAL CASES PENDING AS OF 9/30/2015</b>
CRIMINAL	171	8	3	176
CIVIL	323	21	12	332
TRAFFIC	86	28	25	89
JUVENILE	17	0	0	17
PROBATE	64	4	2	66
<b>TOTAL</b>	661	61	42	<b>680</b>



**CALENDAR MONTH OF OCTOBER 2015**

<b>TYPE OF CASES</b>	<b>PENDING Cases AS OF 9/30/2015</b>	<b>CASES FILED FROM 10/1-31/2015 (+)</b>	<b>CASES DISPOSED FROM 10/1-31/2015 (-)</b>	<b>TOTAL CASES PENDING AS OF 10/31/2015</b>
CRIMINAL	176	28	6	198
CIVIL	332	14	36	310
TRAFFIC	89	57	38	108
JUVENILE	17	9	0	26
PROBATE	66	4	14	56
<b>TOTAL</b>	<b>680</b>	<b>112</b>	<b>94</b>	<b>698</b>

**CALENDAR MONTH OF NOVEMBER 2015**

<b>TYPE OF CASES</b>	<b>PENDING Cases AS OF 10/1-31/2015</b>	<b>CASES FILED FROM 11/01/-30/2015 (+)</b>	<b>CASES DISPOSED FROM 11/01/-30/2015 (-)</b>	<b>TOTAL CASES PENDING AS OF 11/30/2015</b>
CRIMINAL	198	15	5	208
CIVIL	310	16	5	321
TRAFFIC	108	30	14	124
JUVENILE	26	1	1	26
PROBATE	56	2	3	55
<b>TOTAL</b>	<b>698</b>	<b>64</b>	<b>28</b>	<b>734</b>



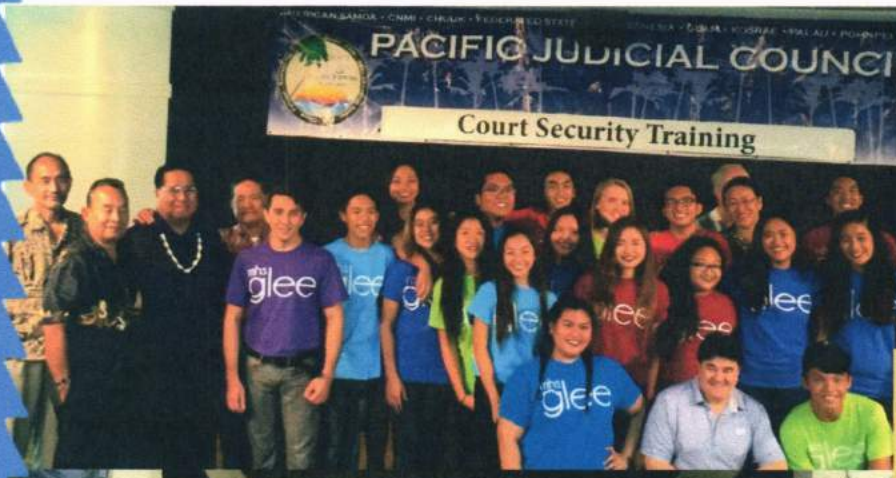
JUDICIARY GENERAL REPORT FOR CALENDAR YR 2015  
 CHUUK STATE SUPREME COURT  
 TRIAL DIVISION, WENO CHUUK STATE

CALENDAR MONTH OF DECEMBER 2015

TYPE OF CASES	PENDING Cases AS OF 11/01/-30/2015	CASES FILED FROM 12/1-31/2015 (+)	CASES DISPOSED FROM 12/1-31/2015 (-)	TOTAL CASES PENDING AS OF 12/31/2015
CRIMINAL	208	6	5	209
CIVIL	321	14	18	317
TRAFFIC	124	4	14	114
JUVENILE	26	0	0	26
PROBATE	55	8	4	59
<b>TOTAL</b>	734	32	41	725



# MORE COURT TRAINING and ACTIVITY





**JUDICIARY GENERAL REPORT FOR CALENDAR YEAR 2015**  
**CHUUK STATE SUPREME COURT**  
**TRIAL DIVISION, WENO, CHUUK STATE**

**SUMMARY STATISTICAL REPORT FOR YEAR 2015**

<b>TYPE OF CASES</b>	<b>PENDING Cases BEGINNING OF YEAR 2015</b>	<b>CASES FILED BETWEEN JANUARY - DECEMBER (+)</b>	<b>CASES DISPOSED BETWEEN JANUARY - DECEMBER (-)</b>	<b>TOTAL CASES PENDING AS OF 12/31/2015</b>
<b>CRIMINAL</b>	291	135	217	<b>209</b>
<b>CIVIL</b>	366	176	225	<b>317</b>
<b>TRAFFIC</b>	201	213	300	<b>114</b>
<b>JUVENILE</b>	24	19	17	<b>26</b>
<b>PROBATE</b>	85	78	104	<b>59</b>
<b>TOTAL</b>	<b>967</b>	<b>621</b>	<b>863</b>	<b>725</b>



**CHUUK STATE SUPREME COURT**  
**Federated States of Micronesia**  
**Trial Division**

**STATISTICAL CASE REPORT SUMMARY**

Type of Cases	Number of Cases pending ending of 2006	Number of Cases Filed in 2007 to 2015	Total
Criminal	354	1,465	<b>1,819</b>
Civil	488	1,365	<b>1,853</b>
Traffic	1,129	1,899	<b>3,028</b>
Juvenile	14	95	<b>109</b>
Probate	74	525	<b>599</b>
<b>Total</b>	<b>2,059</b>	<b>5,349</b>	<b>7,408</b>

**Number of cases disposed from 2007 through 2015**

Criminal	1,610
Civil	1,536
Traffic	2,914
Juvenile	83
Probate	540
<b>Total</b>	<b>6,683</b>
<b>GRAND TOTAL</b>	<b>6,683</b>

**Number of cases filed from 2007 through 2015**

Criminal	1,465
Civil	1,365
Traffic	1,899
Juvenile	95
Probate	525
<b>Total</b>	<b>5,349</b>



## Telephonic Off Island Hearing



Visit our website:

[www.chuukssc.org](http://www.chuukssc.org)

P.O. Box 187

Weno, Chuuk State, FSM 96942

Tel: 691 330 2229



**CHUUK STATE SUPREME COURT**  
**Criminal Cases by Type**  
**TRIAL DIVISION, WENO CHUUK STATE**  
**CALENDAR YEAR 2007 - 2015**

**CALENDER YR 2007**

<b>CRIMINAL CASES</b>	<b>PENDING</b>	<b>CASES</b>	<b>CASES</b>	<b>TOTAL</b>
<b>BY</b>	<b>Cases</b>	<b>FILED</b>	<b>DISPOSED</b>	<b>CASES</b>
<b>TYPE</b>	<b>AS OF</b>	<b>FROM</b>	<b>FROM</b>	<b>PENDING</b>
	<b>12/31/2006</b>	<b>1/1/12/31/07</b>	<b>1/1/12/31/07</b>	<b>AS OF 12/31/2007</b>
		<b>(+)</b>	<b>(-)</b>	
<b>CRIMINAL</b>	<b>354</b>	<b>210</b>	<b>143</b>	<b>421</b>
Murder & Attempted Murder	56	18	6	68
Manslaughter	0	0	0	0
Neglegent Homecide	2	0	1	1
Assault w/dangerous weapon	182	108	27	263
Aggravated Assault	16	0	5	11
Sexual Assault	3	4	2	5
Others	95	80	102	73
<b>TOTAL</b>	<b>354</b>	<b>210</b>	<b>143</b>	<b>421</b>

**CALENDAR YEAR 2008**

<b>CRIMINAL CASES</b>	<b>PENDING</b>	<b>CASES</b>	<b>CASES</b>	<b>TOTAL</b>
<b>BY</b>	<b>Cases</b>	<b>FILED</b>	<b>DISPOSED</b>	<b>CASES</b>
<b>TYPE</b>	<b>AS OF</b>	<b>FROM</b>	<b>FROM</b>	<b>PENDING</b>
	<b>12/31/2007</b>	<b>1/1-12/31/08</b>	<b>1/1-12/31/08</b>	<b>AS OF 12/31/2008</b>
		<b>(+)</b>	<b>(-)</b>	
<b>CRIMINAL</b>	<b>421</b>	<b>187</b>	<b>151</b>	<b>457</b>
Murder & Attempted Murder	68	9	14	63
Manslaughter	0	0	0	0
Neglegent Homecide	1	1	0	2
Assault w/dangerous weapon	263	99	68	294
Aggravated Assault	11	4	4	11
Sexual Assault	5	4	3	6
Others	73	70	62	81
<b>TOTAL</b>	<b>421</b>	<b>187</b>	<b>151</b>	<b>457</b>

**CHUUK STATE SUPREME COURT**  
**Criminal Cases by Type**  
**TRIAL DIVISION, WENO CHUUK STATE**

**CALENDAR YEAR 2009**

<b>CRIMINAL CASES</b>	<b>PENDING</b>	<b>CASES</b>	<b>CASES</b>	<b>TOTAL</b>
<b>BY</b>	<b>Cases</b>	<b>FILED</b>	<b>DISPOSED</b>	<b>CASES</b>
<b>TYPES</b>	<b>AS OF</b>	<b>FROM</b>	<b>FROM</b>	<b>PENDING</b>
	<b>12/31/2008</b>	<b>1/1-12/31/09</b>	<b>1/1-12/31/09</b>	<b>AS OF 12/31/2009</b>
		<b>(+)</b>	<b>(-)</b>	
<b>CRIMINAL</b>	<b>457</b>	<b>209</b>	<b>77</b>	<b>589</b>
Murder & Attempted Murder	63	9	8	64
Manslaughter	0	0	0	0
Neglegent Homecide	2	2	0	4
Assault w/dangerous weapon	294	94	30	358
Aggravated Assault	11	3	0	14
Sexual Assault	6	3	1	8
Others	81	98	38	141
<b>TOTAL</b>	<b>457</b>	<b>209</b>	<b>77</b>	<b>589</b>

**CALENDAR YEAR 2010**

<b>CRIMINAL CASES</b>	<b>PENDING</b>	<b>CASES</b>	<b>CASES</b>	<b>TOTAL</b>
<b>BY</b>	<b>Cases</b>	<b>FILED</b>	<b>DISPOSED</b>	<b>CASES</b>
<b>TYPES</b>	<b>AS OF</b>	<b>FROM</b>	<b>FROM</b>	<b>PENDING</b>
	<b>12/31/2009</b>	<b>1/1-12/31/10</b>	<b>1/1-12/31/10</b>	<b>AS OF 12/31/2010</b>
		<b>(+)</b>	<b>(-)</b>	
<b>CRIMINAL</b>	<b>589</b>	<b>185</b>	<b>112</b>	<b>662</b>
Murder & Attempted Murder	64	15	4	75
Manslaughter	0	7	0	7
Neglegent Homecide	4	1	0	5
Assault w/dangerous weapon	358	57	65	350
Aggravated Assault	14	16	2	28
Sexual Assault	8	7	3	12
Others	141	82	38	185
<b>TOTAL</b>	<b>589</b>	<b>185</b>	<b>112</b>	<b>662</b>



**CHUUK STATE SUPREME COURT**  
**Criminal Cases by Type**  
**TRIAL DIVISION, WENO CHUUK STATE**

**CALENDAR YEAR 2011**

<b>CRIMINAL CASES</b>	<b>Cases</b>	<b>FILED</b>	<b>DISPOSED</b>	<b>CASES</b>
<b>BY</b>	<b>AS OF</b>	<b>FROM</b>	<b>FROM</b>	<b>PENDING</b>
<b>TYPES</b>	<b>12/31/2010</b>	<b>1/1-12/31/11</b>	<b>1/1-12/31/11</b>	<b>AS OF 12/31/2011</b>
		<b>(+)</b>	<b>(-)</b>	
<b>CRIMINAL</b>	<b>662</b>	<b>129</b>	<b>70</b>	<b>721</b>
Murder & Attempted Murder	75	17	13	79
Manslaughter	7	2	1	8
Neglegent Homecide	5	1	2	4
Assault w/dangerous weapon	350	38	32	356
Aggravated Assault	28	21	3	46
Sexual Assault	12	5	2	15
Others	185	45	17	213
<b>TOTAL</b>	<b>662</b>	<b>129</b>	<b>70</b>	<b>721</b>

**CALENDAR YEAR 2012**

<b>CRIMINAL CASES</b>	<b>Cases</b>	<b>FILED</b>	<b>DISPOSED</b>	<b>CASES</b>
<b>BY</b>	<b>AS OF</b>	<b>FROM</b>	<b>FROM</b>	<b>PENDING</b>
<b>TYPES</b>	<b>12/31/2011</b>	<b>1/1-12/31/12</b>	<b>1/1-12/31/12</b>	<b>AS OF 12/31/2012</b>
		<b>(+)</b>	<b>(-)</b>	
<b>CRIMINAL</b>	<b>721</b>	<b>211</b>	<b>328</b>	<b>604</b>
Murder & Attempted Murder	79	4	19	64
Manslaughter	8	2	0	10
Neglegent Homecide	4	0	0	4
Assault w/dangerous weapon	356	64	65	355
Aggravated Assault	46	22	54	14
Sexual Assault	15	4	8	11
Others	213	115	182	146
<b>TOTAL</b>	<b>721</b>	<b>211</b>	<b>328</b>	<b>604</b>

**JUDICIARY GENERAL REPORT FROM YR 2007 - 2015**  
**CHUUK STATE SUPREME COURT**  
**TRIAL DIVISION, WENO CHUUK STATE**

**CALENDAR YEAR 2013**

<b>CRIMINAL CASES</b>	<b>PENDING</b>	<b>CASES</b>	<b>CASES</b>	<b>TOTAL</b>
<b>BY</b>	<b>Cases</b>	<b>FILED</b>	<b>DISPOSED</b>	<b>CASES</b>
<b>TYPES</b>	<b>AS OF</b>	<b>FROM</b>	<b>FROM</b>	<b>PENDING</b>
	<b>12/31/2012</b>	<b>1/1-12/31/13</b>	<b>1/1-12/31/13</b>	<b>AS OF 12/31/2013</b>
		<b>(+)</b>	<b>(-)</b>	
<b>CRIMINAL</b>	<b>604</b>	<b>113</b>	<b>183</b>	<b>534</b>
Murder & Attempted Murder	64	3	3	64
Manslaughter	10	0	0	10
Neglegent Homecide	4	0	0	4
Assault w/dangerous weapon	355	17	12	360
Aggravated Assault	14	10	7	17
Sexual Assault	11	2	0	13
Others	146	81	161	66
<b>TOTAL</b>	<b>604</b>	<b>113</b>	<b>183</b>	<b>534</b>

**CALENDAR YEAR 2014**

<b>CRIMINAL CASES</b>	<b>Cases</b>	<b>FILED</b>	<b>DISPOSED</b>	<b>CASES</b>
<b>BY</b>	<b>AS OF</b>	<b>FROM</b>	<b>FROM</b>	<b>PENDING</b>
<b>TYPES</b>	<b>12/31/2013</b>	<b>1/1-12/31/14</b>	<b>1/1-12/31/14</b>	<b>AS OF 12/31/2014</b>
		<b>(+)</b>	<b>(-)</b>	
<b>CRIMINAL</b>	<b>534</b>	<b>86</b>	<b>329</b>	<b>291</b>
Murder & Attempted Murder	64	12	18	58
Manslaughter	10	0	2	8
Neglegent Homecide	4	1	1	4
Assault w/dangerous weapon	360	26	197	189
Aggravated Assault	17	17	13	21
Sexual Assault	13	6	12	7
Others	66	24	86	4
<b>TOTAL</b>	<b>534</b>	<b>86</b>	<b>329</b>	<b>291</b>



**JUDICIARY GENERAL REPORT FROM YR 2007 - 2015**  
**CHUUK STATE SUPREME COURT**  
**TRIAL DIVISION, WENO CHUUK STATE**

**CALENDAR YEAR 2015**

<b>TYPE OF CASES</b>	<b>PENDING Cases AS OF 12/31/2014</b>	<b>CASES FILED FROM 1/1-12/31/15 (+)</b>	<b>CASES DISPOSED FROM 1/1-12/31/15 (-)</b>	<b>TOTAL CASES PENDING AS OF 12/31/2015</b>
<b>CRIMINAL</b>	<b>291</b>	<b>135</b>	<b>217</b>	<b>209</b>
Murder & Attempted Murder	58	11	11	58
Manslaughter	8	2	0	10
Neglegent Homecide	4	0	4	0
Assault w/dangerous weapon	189	37	145	81
Aggravated Assault	21	13	26	8
Sexual Assault	7	6	6	7
Others	4	66	25	45
<b>TOTAL</b>	<b>291</b>	<b>135</b>	<b>217</b>	<b>209</b>

**APPELLATE DIVISION  
CHUUK STATE SUPREME COURT  
FEDERATED STATES OF MICRONESIA**

**ANNUAL REPORT  
From January 2015 through December 2015**

**Criminal & Civil Appeal Case for January 2015 - December 2015**

<b>CASE BY TYPE</b>	<b>CASES PENDING BEGINNING JANUARY 2015</b>	<b>CASES FILED DURING 1/1/2015 - 12/31/2015</b>	<b>CASES DISPOSED DURING 1/1/2015 - 12/31/2015</b>	<b>CASES PENDING ENDING DECEMBER 2015</b>
<b>CRIMINAL</b>	<b>9</b>	<b>1</b>	<b>5</b>	<b>5</b>
<b>CIVIL</b>	<b>13</b>	<b>8</b>	<b>9</b>	<b>12</b>



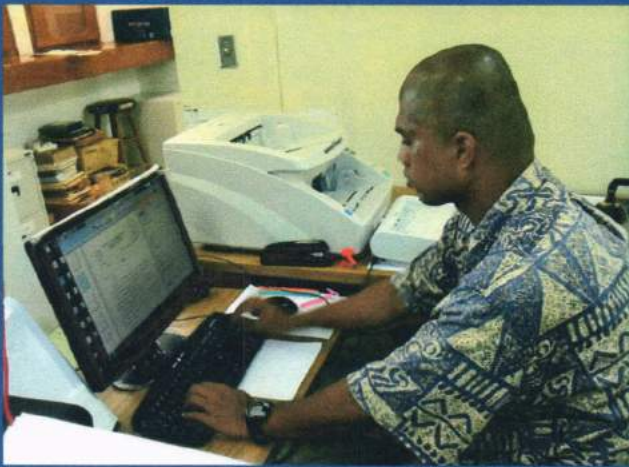
# Technology improvements:



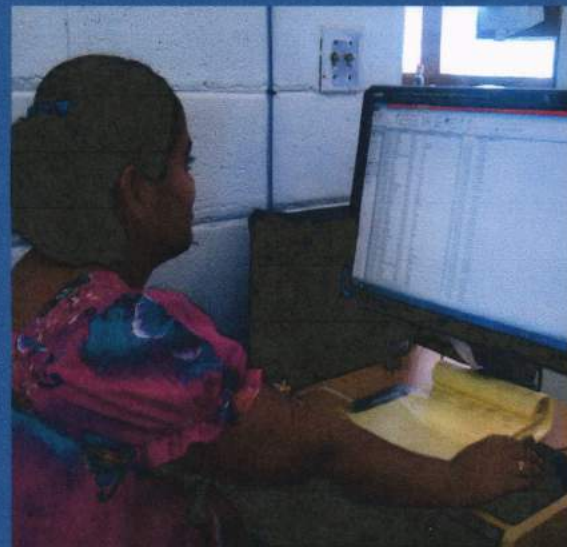
Court I.T



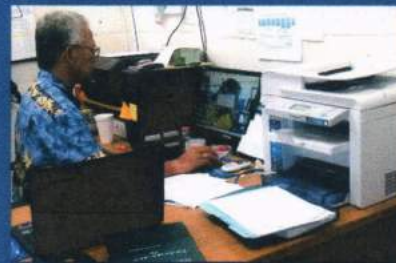
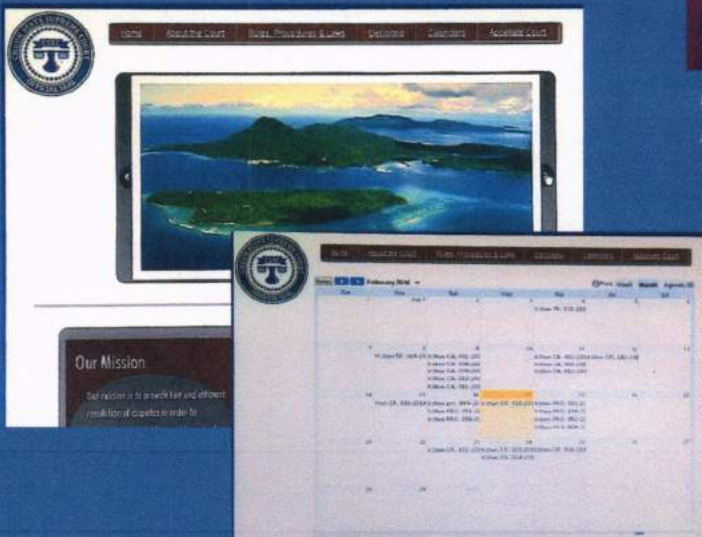
Courtroom recording system or FTR



Scan process on Laserfiche System  
And Networking



Searching for certificates of  
Birth, Death, Marriage and etc.



some views of the court website



CHUUK STATE SUPREME COURT  
*Federated States of Micronesia*  
 Trial Division, Weno Chuuk

**Chuuk State Supreme Court**  
**TOTAL OF MONTHLY COLLECTIONS**  
**2007 THROUGH December 2015**

2007	2008	2009	2010	2011	2012
\$12,241.46	\$11,212.00	\$15,465.00	\$12,775.25	\$10,457.25	\$11,831.00

2013	2014	2015	Total
\$14,134.75	\$14,043.50	\$12,400.00	\$114,560.21

Notes: The total amount of monthly collections listed above during each year, were submitted to the Chuuk State Finance for deposit at the end of each month. The total amount which has been collected and submitted to the Chuuk State Finance from 2007 to 2015 is \$114,560.21.

**Collection includes the following:**

- a) Registration of Birth, Marriage and Death Certificates
- b) Pre-printed Birth Certificates
- c) Certification of Birth, Marriage, and Death Certificates
- d) Membership fees in Chuuk State Bar
- e) Fees for Civil Marriage performance
- f) Fines and Fees









**CHUUK STATE SUPREME COURT  
COLLECTION 2009**

MONTH	FINES	FILING FEES	OTHERS FEES **	TOTAL COLLECTION
January	\$645.00	\$80.00	\$406.50	\$1,131.50
February	\$960.00	\$46.00	\$652.00	\$1,658.00
March	\$550.00	\$215.00	\$485.00	\$1,250.00
April	\$425.00	\$155.00	\$500.50	\$1,080.50
May	\$605.00	\$125.00	\$436.00	\$1,166.00
June	\$885.00	\$160.00	\$501.00	\$1,546.00
July	\$335.00	\$85.00	\$651.00	\$1,071.00
August	\$650.00	\$60.00	\$591.50	\$1,301.50
September	\$1,015.00	\$60.00	\$377.50	\$1,452.50
October	\$770.00	\$71.00	\$390.00	\$1,231.00
November	\$805.00	\$85.00	\$418.50	\$1,308.50
December	\$675.00	\$140.00	\$453.50	\$1,268.50
<b>TOTAL</b>	<b>\$8,320.00</b>	<b>\$1,282.00</b>	<b>\$5,863.00</b>	<b>\$15,465.00</b>
<b>**Includes the Following</b>				
a) Registration of Birth, Marriage, & Death Certificates				
b) Preprinted of Birth, Marriage & Death Certificates				
c) Certification of Birth, Marriage & Death Certificates				
d) Membership fee in Chuuk Bar				
e) Fines and Fees.				

**CHUUK STATE SUPREME COURT  
COLLECTION 2010**

MONTH	FINES	FILING FEES	OTHERS FEES **	TOTAL COLLECTION
January	\$1,125.00	\$35.00	\$239.50	\$1,399.50
February	\$475.00	\$105.00	\$1,199.50	\$1,779.50
March	\$90.00	\$105.00	\$678.00	\$873.00
April	\$70.00	\$135.00	\$387.50	\$592.50
May	\$610.00	\$120.00	\$548.25	\$1,278.25
June	\$50.00	\$190.00	\$600.00	\$840.00
July	\$0.00	\$105.00	\$495.50	\$600.50
August	\$739.50	\$110.00	\$486.50	\$1,336.00
September	\$160.00	\$120.00	\$292.50	\$572.50
October	\$505.00	\$100.00	\$351.00	\$956.00
November	\$680.00	\$40.00	\$269.00	\$989.00
December	\$1,125.00	\$160.00	\$273.50	\$1,558.50
<b>TOTAL</b>	<b>\$5,629.50</b>	<b>\$1,325.00</b>	<b>\$5,820.75</b>	<b>\$12,775.25</b>
<b>**Includes the Following</b>				
a) Registration of Birth, Marriage, & Death Certificates				
b) Preprinted of Birth, Marriage & Death Certificates				
c) Certification of Birth, Marriage & Death Certificates				
d) Membership fee in Chuuk Bar				
e) Fines and Fees.				











**CHUUK STATE SUPREME COURT  
COLLECTION 2014**

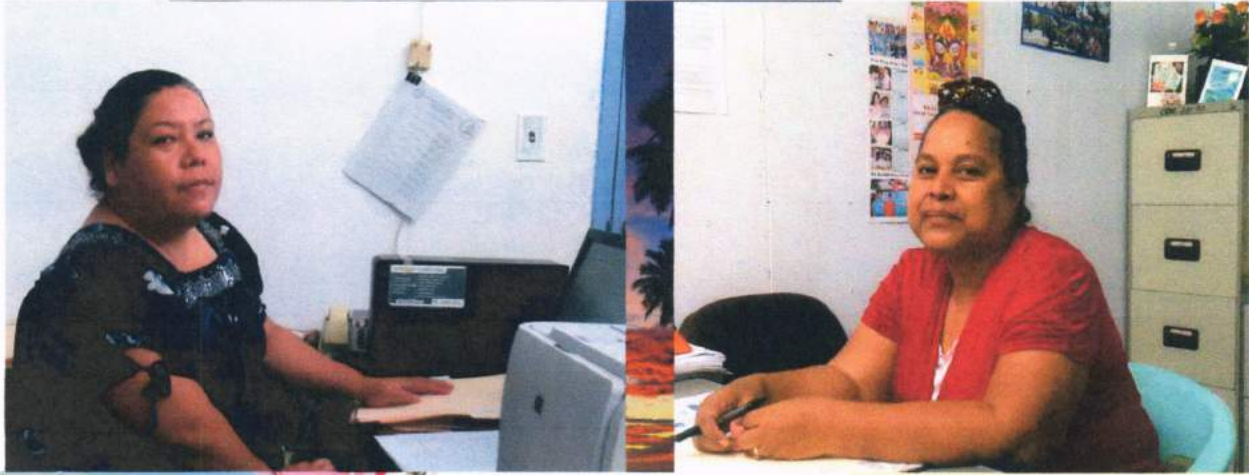
MONTH	FINES	FILING FEES	OTHERS FEES **	TOTAL COLLECTION
January	\$695.00	\$100.00	\$892.00	\$1,687.00
February	\$811.00	\$70.00	\$748.00	\$1,629.00
March	\$1,115.00	\$100.00	\$548.50	\$1,763.50
April	\$1,376.00	\$110.00	\$418.50	\$1,904.50
May	\$390.00	\$80.00	\$325.00	\$795.00
June	\$832.50	\$95.00	\$296.00	\$1,223.50
July	\$252.50	\$105.00	\$261.50	\$619.00
August	\$705.00	\$105.00	\$376.00	\$1,186.00
September	\$869.00	\$140.00	\$207.00	\$1,216.00
October	\$340.00	\$135.00	\$242.00	\$717.00
November	\$455.00	\$100.00	\$220.00	\$775.00
December	\$85.00	\$135.00	\$308.00	\$528.00
<b>TOTAL</b>	<b>\$7,926.00</b>	<b>\$1,275.00</b>	<b>\$4,842.50</b>	<b>\$14,043.50</b>
<b>**Includes the Following</b>				
<b>a) Registration of Birth, Marriage, &amp; Death Certificates</b>				
<b>b) Preprinted of Birth, Marriage &amp; Death Certificates</b>				
<b>c) Certification of Birth, Marriage &amp; Death Certificates</b>				
<b>d) Membership fee in Chuuk Bar</b>				
<b>e) Fines and Fees.</b>				







**COURT JUDICIAL ASSISTANTS**



**COURT MAINTENANCE**

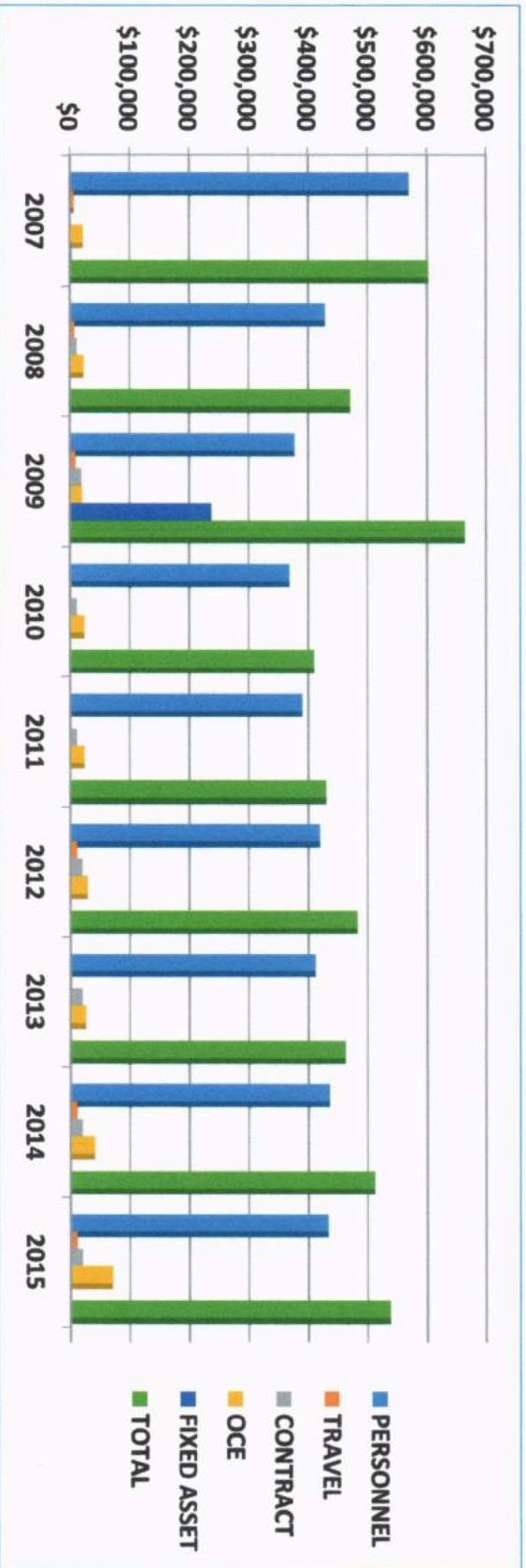




**CHUUK STATE JUDICIARY BRANCH OPERATING BUDGETS**

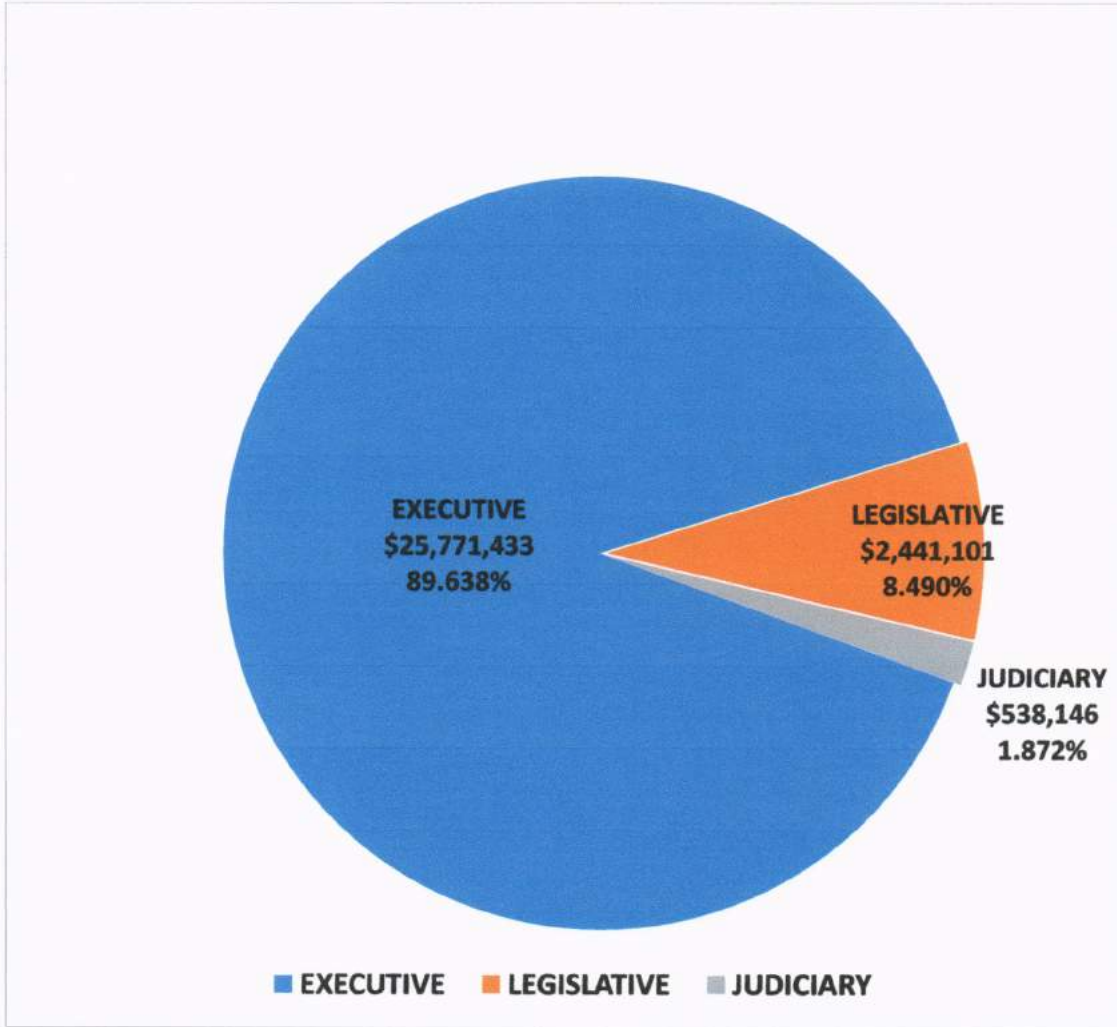
**FROM FY 2007 - 2015**

	2007	2008	2009	2010	2011	2012	2013	2014	2015
PERSONNEL	\$569,766	\$429,109	\$376,741	\$369,150	\$390,125	\$419,466	\$412,464	\$434,928	\$432,925
TRAVEL	\$5,801	\$6,625	\$9,836	\$2,599	\$2,599	\$12,519	\$2,519	\$12,519	\$12,519
CONTRACT	\$1,500	\$12,000	\$19,500	\$12,000	\$12,600	\$20,702	\$20,702	\$20,702	\$20,702
OCE	\$22,000	\$24,238	\$20,000	\$25,000	\$25,000	\$29,480	\$27,000	\$42,000	\$72,000
FIXED ASSET	\$2,925	\$0	\$237,550	\$1,410	\$0	\$0	\$0	\$1,300	\$0
<b>TOTAL</b>	<b>\$601,992</b>	<b>\$471,972</b>	<b>\$663,627</b>	<b>\$410,159</b>	<b>\$430,324</b>	<b>\$482,167</b>	<b>\$462,685</b>	<b>\$511,449</b>	<b>\$538,146</b>



**CHUUK STATE GOVERNMENT OPERATING BUDGETS  
FOR  
EXECUTIVE, LEGISLATIVE & JUDICIARY, FOR FY 2015**

	EXECUTIVE	LEGISLATIVE	JUDICIARY	GRAND TOTAL
<b>TOTAL</b>	<b>\$ 25,771,433</b>	<b>\$ 2,441,101</b>	<b>\$ 538,146</b>	<b>\$ 28,750,680</b>

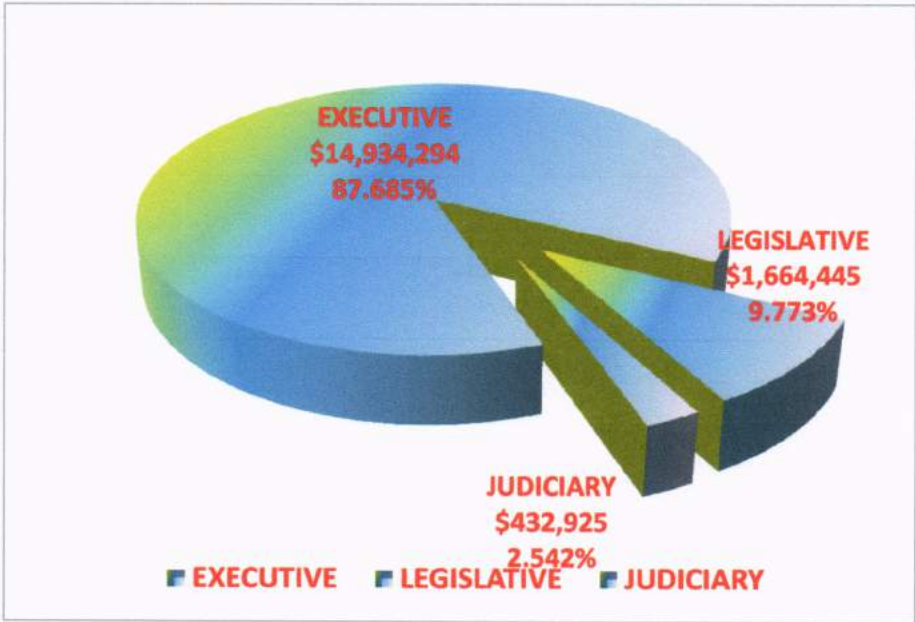




**CHUUK STATE GOVERNMENT OPERATING BUDGETS  
FOR  
EXECUTIVE, LEGISLATIVE & JUDICIARY FOR FY 2015**

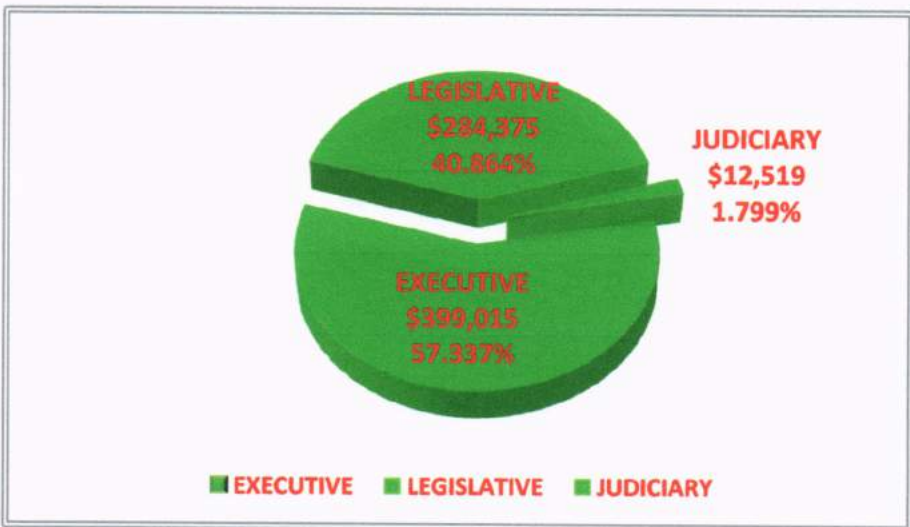
**PERSONNEL**

EXECUTIVE	LEGISLATIVE	JUDICIARY	GRAND TOTAL
\$ 14,934,294	\$ 1,664,445	\$ 432,925	\$ 17,031,664



**TRAVEL**

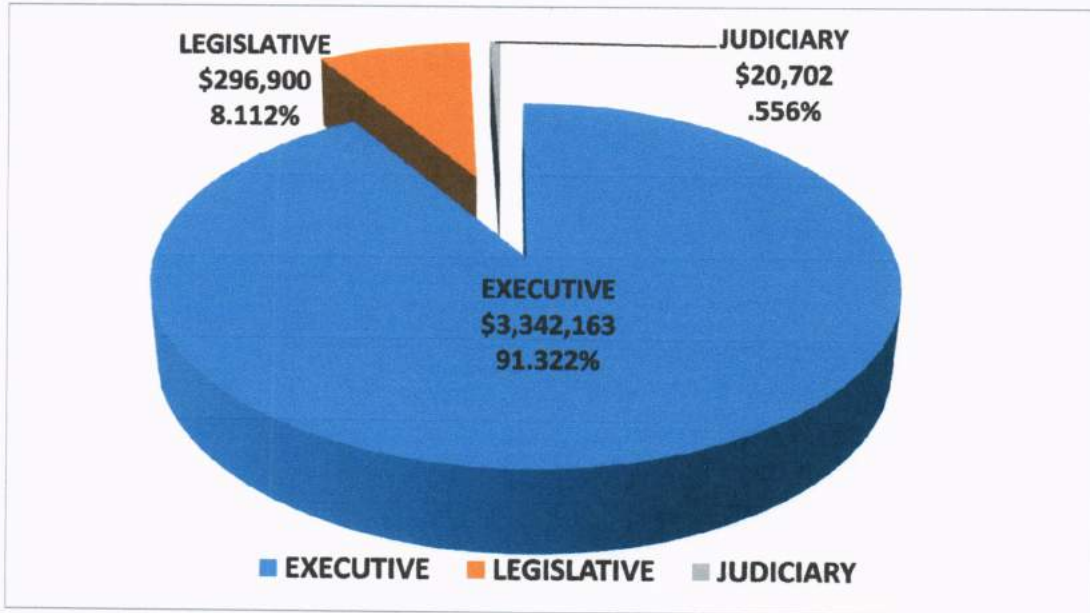
EXECUTIVE	LEGISLATIVE	JUDICIARY	GRAND TOTAL
\$ 399,015	\$ 284,375	\$ 12,519	\$ 695,909



**CHUUK STATE GOVERNMENT OPERATING BUDGETS  
FOR  
EXECUTIVE, LEGISLATIVE & JUDICIARY FOR FY 2015**

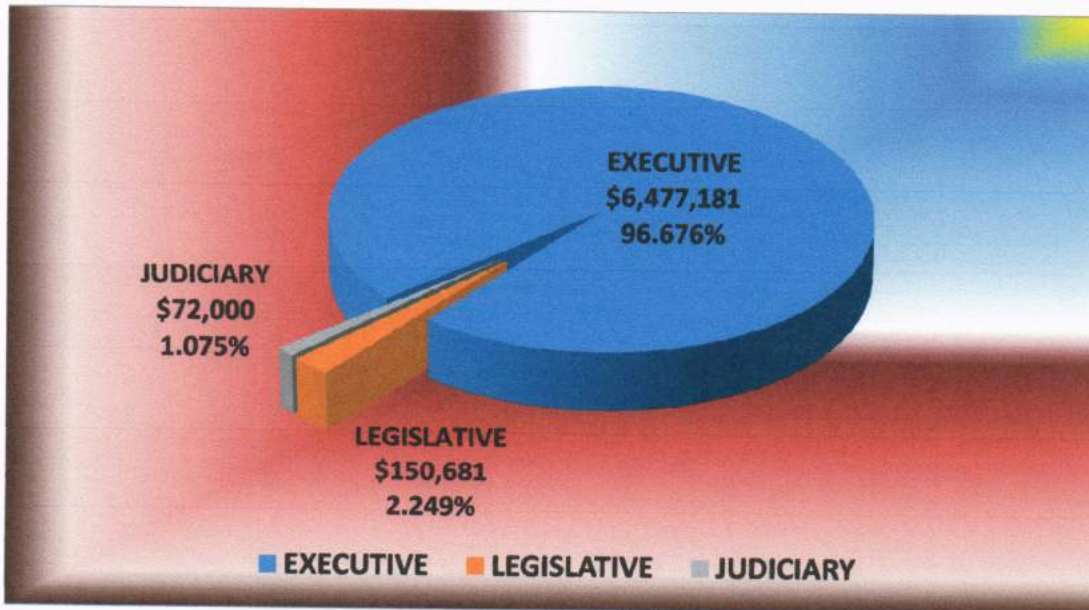
**CONTRACTUAL**

EXECUTIVE	LEGISLATIVE	JUDICIARY	GRAND TOTAL
\$ 3,342,163	\$ 296,900	\$ 20,702	\$ 3,659,765



**OCE**

EXECUTIVE	LEGISLATIVE	JUDICIARY	GRAND TOTAL
\$ 6,477,181	\$ 150,681	\$ 72,000	\$ 6,699,862





**CHUUK STATE GOVERNMENT OPERATING BUDGETS  
FOR  
EXECUTIVE, LEGISLATIVE & JUDICIARY FOR FY 2015**

<b>FIXED ASSET</b>			
<b>EXECUTIVE</b>	<b>LEGISLATIVE</b>	<b>JUDICIARY</b>	<b>GRAND TOTAL</b>
\$ 618,780	\$ 44,700	\$0	\$ 663,480

