

SREB

Enhancing Career Pathways by Creating High Quality Assignments

Leslie Eaves

School Improvement Consultant

Leslie.Eaves@sreb.org

What career pathways do we have represented today?



**Who do your students
need to be when they
graduate from your
program of study?**

One per hexagon

We will use these later

Projects vs PBL Assignment

Dessert vs Main Course

Project	PBL Assignment
	<p>Use the PBL and High Quality Assignment Criteria to determine whether the given assignment is a project or a PBL</p>
	<p>Summarize the difference between a project and a PBL Assignment</p>



How might Project-Based Learning support students in career pathways to learn content and develop necessary skills?

Layered Brainstorming

Add to your earlier skills brainstorming

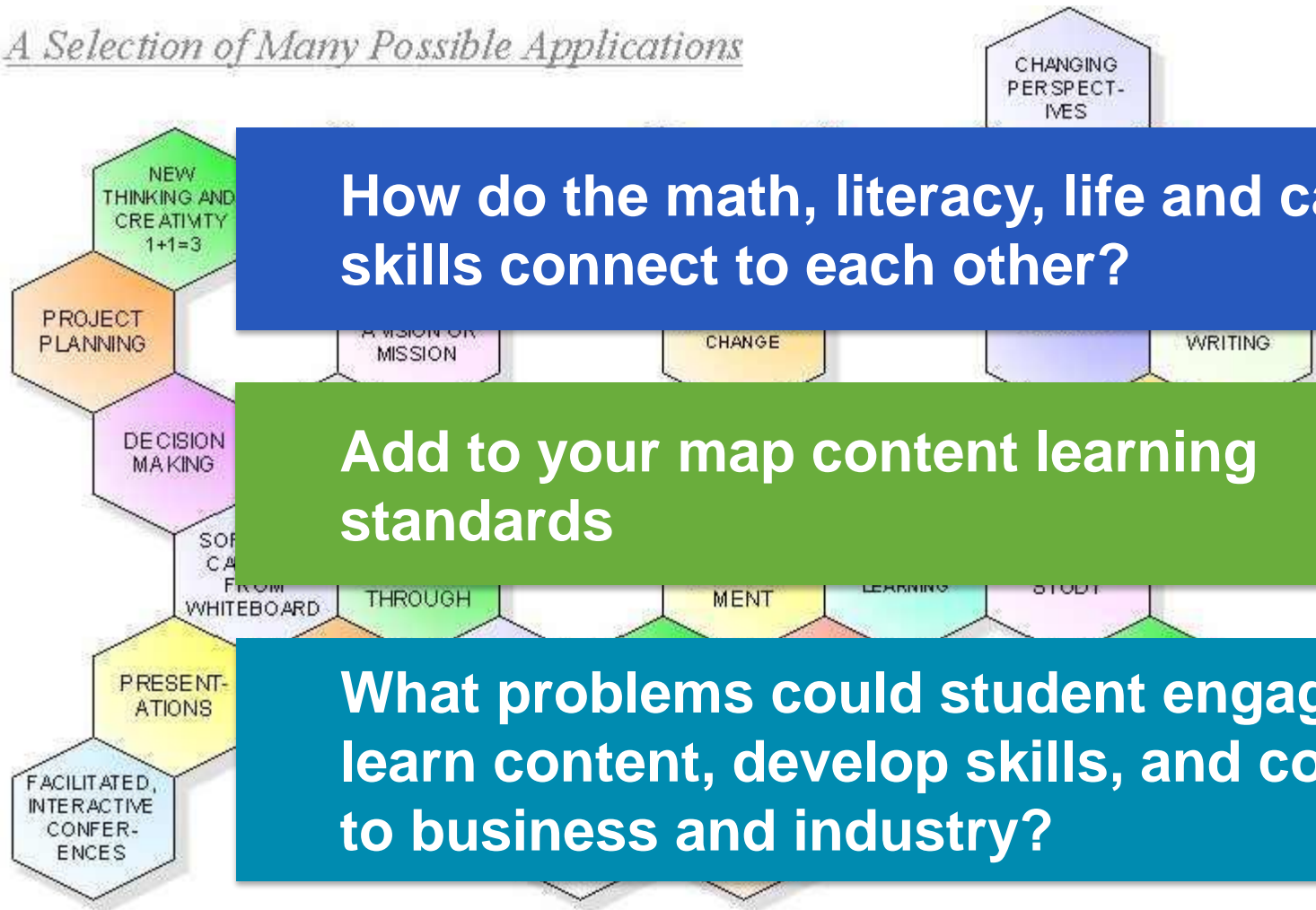
Are there other skills that will need to be successful should they get a career in your program of study?

What authentic writing will students need to do should they get a career in your program of study?

What mathematical skills will students need to do on a regular basis should they get a career in your program of study?

Hexagon Mapping

A Selection of Many Possible Applications



Planning Questions

What standards, skills, and content will students need to learn through this PBL?

What projects or activities have you done in the past with students?

How could they be turned into a PBL Assignment?

What career is responsible for solving this problem?

What are students naturally excited or curious about?



How might Project-Based Learning support students in career pathways to learn content and develop necessary skills?

Planning Questions

What skills will students need to complete the PBL Assignment?

What do they already possess?

What will they need support?

How will student literacy and math skills be developed?

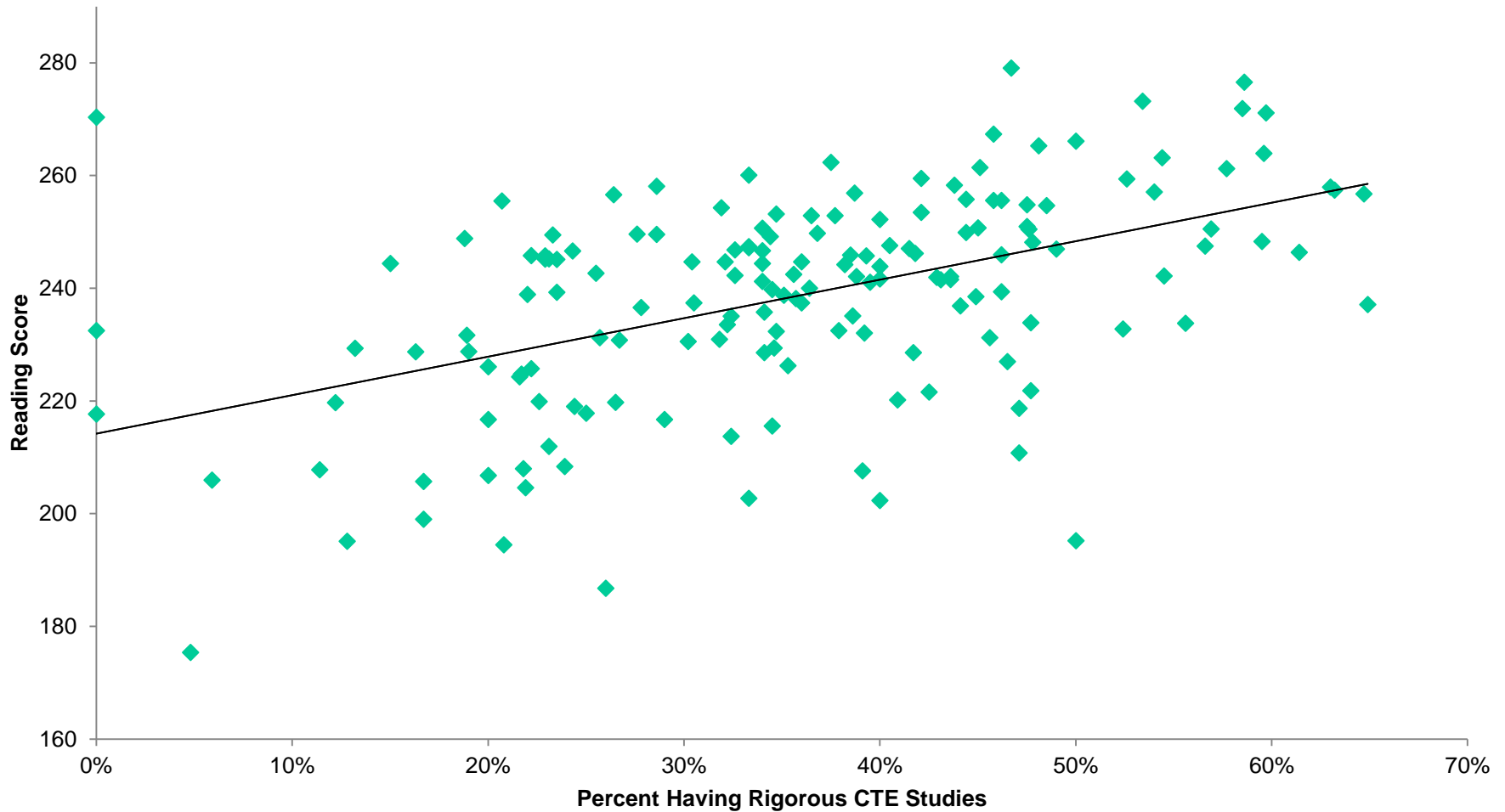
<https://padlet.com/lseaves/PBLScaffoldingSkills>

Considerations

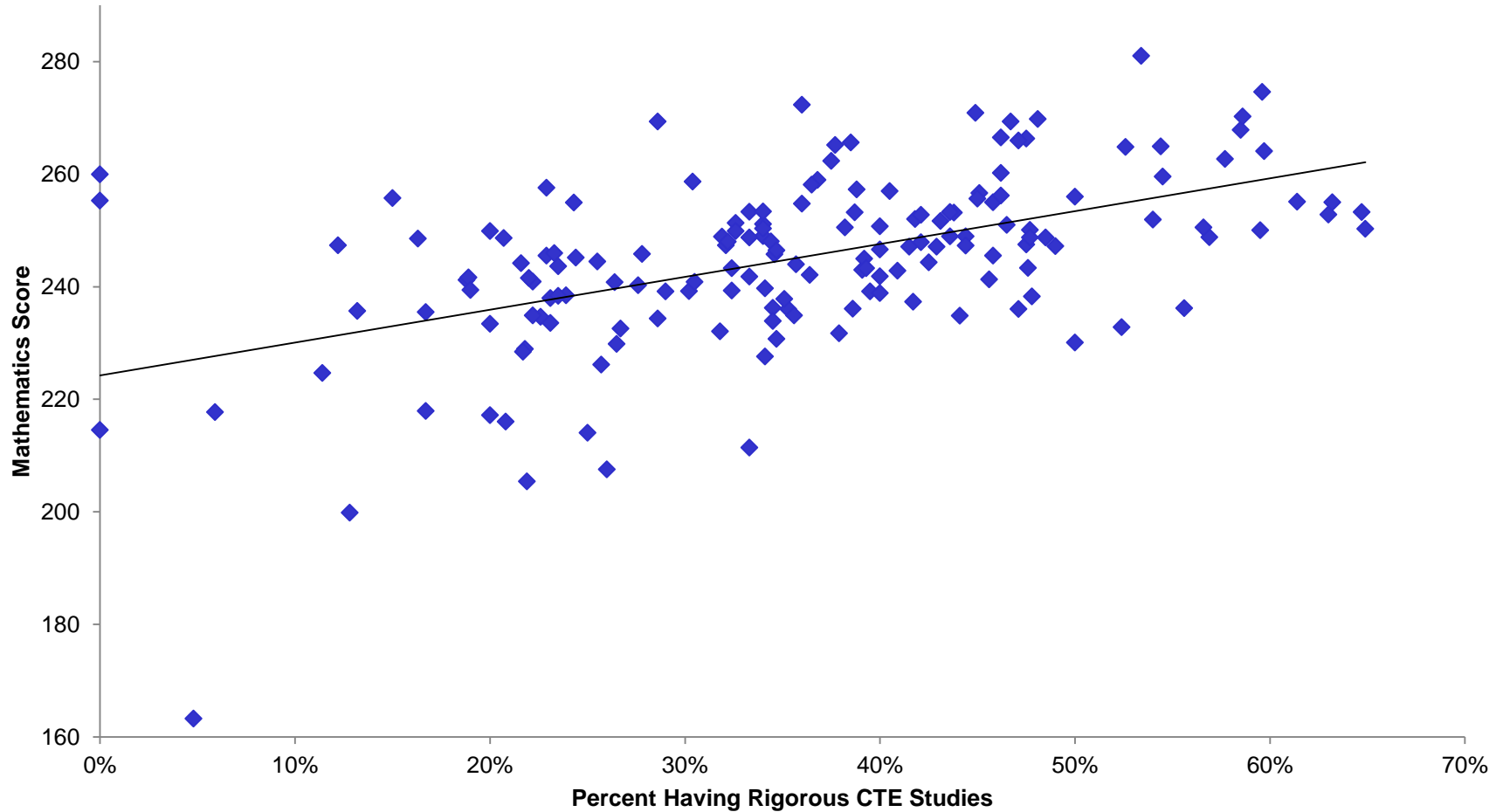
When students engage in High Quality Assignments in career pathway courses and PBL Math, Literacy, and Science scores increase

PBL is a vehicle for developing skills while learning content

School Reading Scores By Percent Students Having HQ Integrated, PBL Assignments

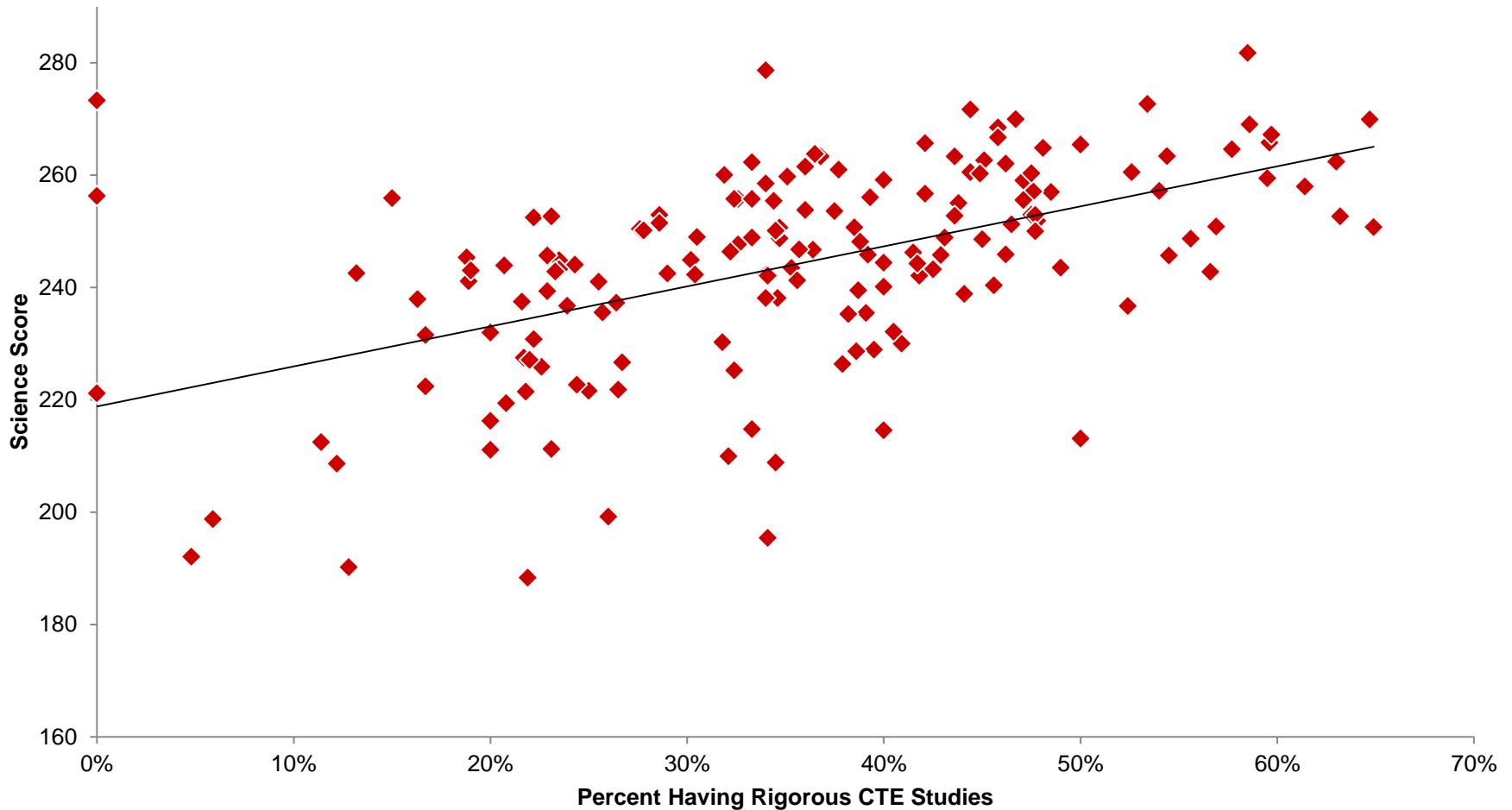


School Mathematics Scores By Percent Students Having HQ Integrated, PBL Assignments



Source: 2012 TCTW Assessment

School Science Scores By Percent Students Having HQ, Integrated, PBL Assignments



Implementing PBL

Planning, planning, planning

PBL needs to be standards rich

Teachers need time to plan and connect with other teachers

Start with a small group of teacher leaders

Provide time for teachers reflect and refine together

Coaching Model that supports teacher reflection and skill development

It takes time



Leslie Eaves
Leslie.eaves@sreb.org
336-749-0555