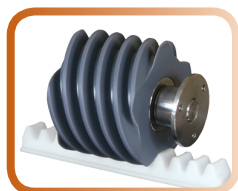


Industry-Leading 600 lbs. Capacity

High-backed, contoured 25" wide seat ensures a comfortable and secure ride. Sturdy, stationary armrests and reinforced footrest add stability for safer transfers. Slides out from wall as it pivots at top landing.

Features & Benefits

- Patented helical worm drive for safe, smooth, energy-efficient ride
- High capacity seat, arm and footrest frames
- Folding footrest
- Integrated constant-pressure controls
- Swivels at landings for entry and exit
- Powerful enough to travel up to a 52-degree incline
- DC drive even runs during power interruptions
- Clean installation and maintenance; no grease or lubricants to apply or clean up
- 600 lbs. capacity – the industry's best



The energy-efficient patented worm drive requires no greases or lubricants.



Safety sensors on carriage and platform stop the lift instantly at obstacles.

As with all Pinnacle stair lifts, the HD model is engineered to the highest industry standards and designed for optimal comfort, convenience and aesthetics.

Specifications	SL600/SL600S
Maximum Weight Capacity:	600 lbs. (272 kg)
Motor Output Amps at Rated Load:	16 amps
Overspeed Governor:	Yes
Track (rail) Type:	Clear Anodized Aluminum
Travel:	16' Standard; 40' Maximum (12.2 m)
Average Number of Return Trips per Charge:	10 - 20
Symmetrical Lift:	Yes
Control in Armrest:	Yes
Need to Open Chassis to Install or Change Sides:	No
Lift Mounts to Steps or Wall:	Steps
Minimum Folded Width:	17" (43 cm)
Minimum Footrest Height:	3.6" (9 cm)
Clear Distance Between Armrests:	25" (63.8 cm)
Floor to Seat Height Low / High:	22"
Minimum Wall to Stair Side of Rail:	12" (30.5 cm)
Seat Depth:	16" (40.6 cm)
Backrest Height From Top of Seat:	18" (45.7 cm)
Electrical Requirements:	120VAC 15A
Operation Power:	24V DC Battery
Speed:	14 fpm
Incline Range:	27 - 52°*
Drive System:	Helical Worm Drive
Warranty:	3-Year on Components 10-Year on Rack 1-Year on Batteries
Safety Devices:	Centrifugal Overspeed Brake Bi-directional Footrest obstruction Sensor Swivel Seat Cut-off Switch Final Limits Seat Belt Chassis Obstruction Sensors