

## Semi-Flush Threshold Light

### Compliances:

- ICAO: Annex 14 - Volume I
- FAA : L-850E AC150/5345-46 (Current Edition)
- IEC: TS 61827
- NATO: STANAG 3316

### Manual:

- Instruction Manual **UT- MT- 0573**



### Applications:

- The SLTH is a **high intensity semi-flush threshold** light that can be used for any category I, II and III ICAO, category I FAA and military runways.
- These fixtures are designed to be powered by **series circuits**.
- The field installation shall be in compliance with the requirements of ICAO - Annex 14, FAA or STANAG 3316 Specs.

### Performances and benefits:

- **½ inch protrusion above the ground:** FAA Style 2 and IEC Style 3.
- **Dome temperature less than 160° C** when the light is working at 6.6 A.
- **1000 hours lamp rated life** at 6.6 A or far over 3000 hours in field operating conditions.
- Significant **energy savings** and **stable chromaticity** thanks to the use of **dichroic filters**.
- Designed and manufactured with simplicity and **easy to maintain**.

### Features:

- Aluminium treated cast aluminium dome and lower cover.
- Unidirectional, 12" dia., with two lamps.
- Each prism is mechanically clamped to the dome by means of a mounting plate; a customized lens gasket avoids the use of sealing. Replacement is quick and easy.
- No optical adjustment is required after the replacement of the lamps, filters or prisms.
- An O-ring placed outside around the dome avoids dirt deposits between light unit and mounting assembly.
- The removal of the fixture is easy thanks to the two seats provided on the dome.

### Luminous Sources:

- Two 105W 6.6A tungsten-halogen lamps complete with dichroic reflector and cable with male faston terminal.

### Power Supply:

- From 200W up to 300W series transformer.

### Example of how to order:

**Basic P/N:** SLTH - A - ST - 200 - -

**Colour:** \_\_\_\_\_  
 G = Green  
 A = Green FAA \*\*

**Toe-in \*:** \_\_\_\_\_  
 RI = Left  
 LI = Right  
 ST = Straight

**Lamps:** \_\_\_\_\_  
 200 = 2x105W 6.6A reflectorized

**Mounting Assembly:** \_\_\_\_\_  
 B = L -868 Base or Shallow Base, 12" dia   
 O = No Mounting Assembly

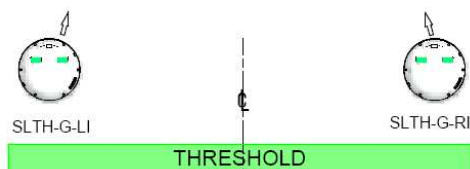
**Options:** \_\_\_\_\_  
 F = Fuse Cutouts  
 E = Electronic Cutout Relays

FAA Approved, ETL certified.

#### \* Toe-in

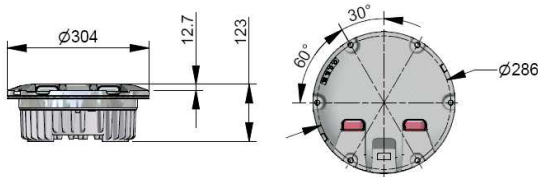
The beam aiming is not field adjustable.

\*\* Colour "A" may be combined with Toe-in "ST" only.

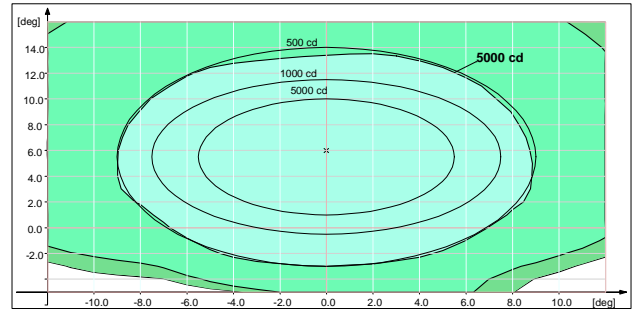


## Mounting base

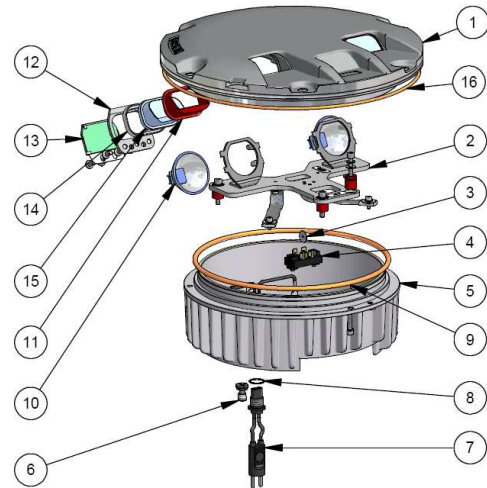
The light unit can be directly mounted on a deep base, L-868 type, size B.



| Shipping Weights and Volumes |            |
|------------------------------|------------|
|                              | Light Unit |
| Weight (Kg)                  | 7.5        |
| Volume (cu.m)                | 0.022      |



Annex 14 Fig. A2-3 Threshold green light



## Accessories :

| [P/N]    | Description   |
|----------|---|
| 315.1230 | Base L-868 type, class IA, size B, 24" deep*                                |
| 315.1420 | Flange ring with pavement dam for L-868 base, size B, with O-ring and bolts |
| 152.8110 | Shallow base, 12" dia, one cable lead, with gasket and hardware             |

\* Sectional bases may be required depending upon the paving technique

For any information about isolating transformers and connectors, please see the specific catalogue pages

## Renewal Parts for light unit:

| [N] | Description  | [P/N]    |
|-----|--|----------|
| 1   | Cast aluminium dome, complete with prisms and gaskets                      | 153.0000 |
| 2   | Complete lamp supporting plate, straight                                   | 153.1011 |
| 2   | Complete lamp supporting plate, right toe-in                               | 153.1021 |
| 2   | Complete lamp supporting plate, left toe-in                                | 152.1031 |
| 3   | Fuse cutout  | 000.1466 |
| 4   | Insulated strip with hardware  | 329.3025 |
| 5   | Lower cover with 1 entry, complete with plug and valve                     | 152.8055 |
| 6   | Valve for watertightness test  | 786.7045 |
| 7   | L-823 two-pole plug with cable leads, 0.500 m long, and with terminal bush | 329.0050 |
| 8   | O-ring for terminal bush   | 758.2035 |
| 9   | Silicone O-ring for light unit (between dome and lower cover)              | 758.2025 |
| 10  | 105 W tungsten-halogen lamp, 6.6 A, with dichroic reflector                | 760.2190 |
| 11  | Silicone gasket for prism  | 325.0311 |
| 12  | Mounting plate for prism   | 341.0960 |
| 13  | Dichroic FAA green filter with support                                     | 153.0070 |
| 13  | Dichroic ICAO green filter with support                                    | 153.0040 |
| 14  | Nylon gasket for prism   | 325.8010 |
| 15  | Glass prism  | 318.1130 |
| 16  | Silicone O-ring for dome   | 758.2016 |
|     | Vibration damping block with hardware                                      | 152.8080 |
|     | Electronic cutout relay with hardware                                      | 202.0012 |
|     | Grease for gasket, 400gr   | 752.1014 |
|     | Anaerobic adhesive for screws, 50cc  | 712.0025 |