

# FOLSOM STREET

## EAU CLAIRE, WISCONSIN SPACE AVAILABLE FOR LEASE

1,290 Square Feet



### *High Traffic Location* **2523 West Folsom Street, Suite A2**

- ◆ **Competitive Rates**
- ◆ **Flexible Use-Retail, Professional Office, Medical**
- ◆ **Clairemont & Folsom Signalized Intersection**
- ◆ **Fast Access to Hwy I94, 312**
- ◆ **Great Visibility**
- ◆ **Attractive Arts & Craft Architecture**
- ◆ **Next to Numerous Customer Generators such as Dollar Tree, Dunkin' Donuts, Menards, Festival Foods West, Holiday Express, Culvers**

*For More*

*Information Contact:*

**DAVID SANDERS**  
**715-723-2223 Ext. 1**



*"Your Commercial Real Estate Specialists"*

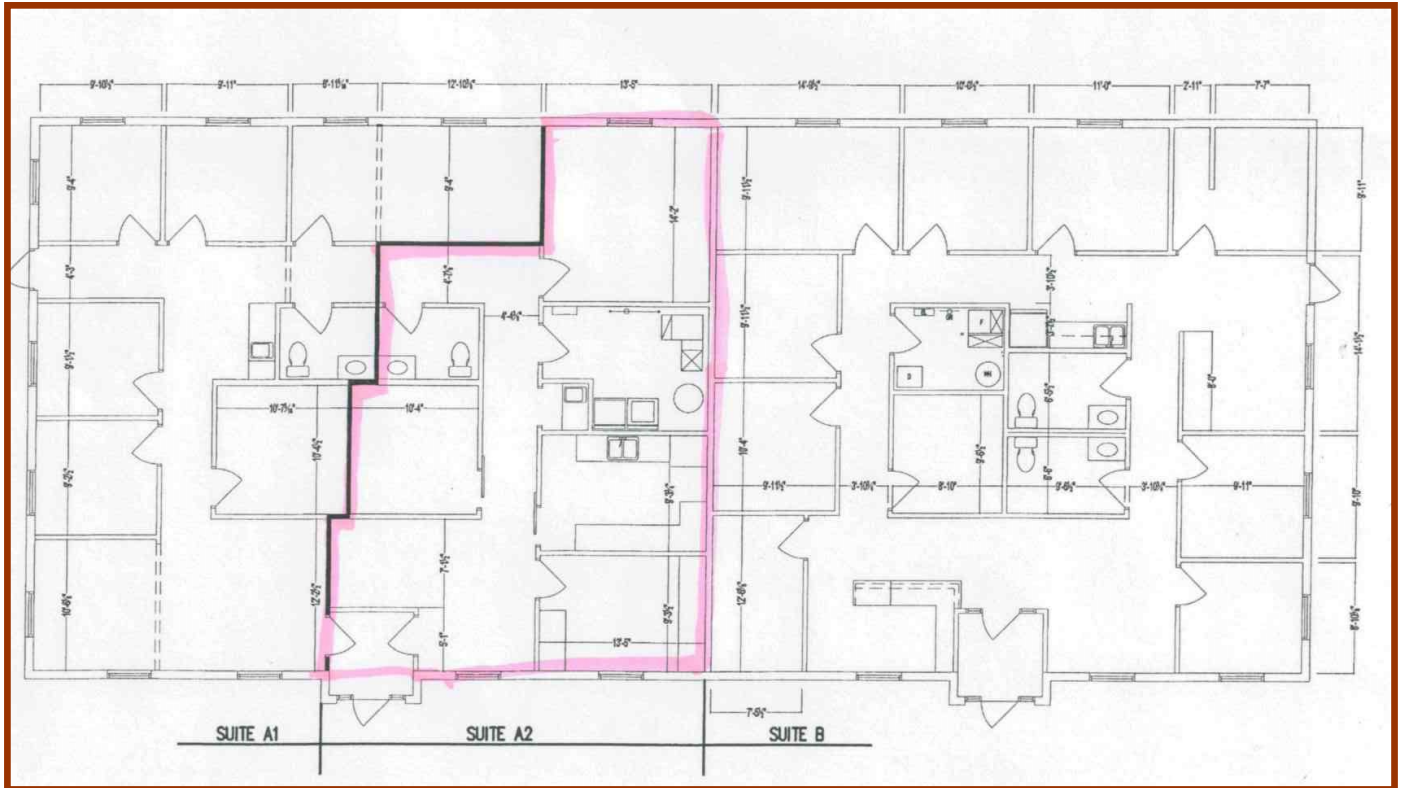
**Mid States Development, Inc.**  
[www.midstatesdevelopment.com](http://www.midstatesdevelopment.com)

[dsanders@midstatesdevelopment.com](mailto:dsanders@midstatesdevelopment.com)

# SPACE AVAILABLE FOR LEASE

Approximately 1,290 SF

## SUITE A2



CUSTOMER PARKING AT YOUR DOOR

*For More Information, Contact:*

**DAVID SANDERS**

**715-723-2223 EXT 1**

[dsanders@midstatesdevelopment.com](mailto:dsanders@midstatesdevelopment.com)