

# 34 GREEN CLAY MASK

GREEN CLAY MASK is a dry formulation composed by functional green clay with natural actives ingredients that perform an enhanced biological activity on the skin. The powder needs to be added with a small amount of water, applied on the face skin and left in place for 15-20 minutes. After clay removal, skin will appear more even and smoother.

From Indena, it contains:

OPEXTAN®: olive fruit extract, contains verbascoside, a polyphenol typically present in the olive fruit but not in the olive leaf. It has shown a remarkable antioxidant capacity over time.

SILIPHOS®: potent antiageing cosmetic ingredient, improves cells renewal and provides a retinoic acid-like activity but devoid of any irritating potential. It has also shown remarkable skin restructuring properties.

CENTEROX™: highly purified glicosilated *Centella asiatica* triterpenes, enhance collagen synthesis and skin densification. This freely water soluble active ingredient perfectly fits in clay mask applications.

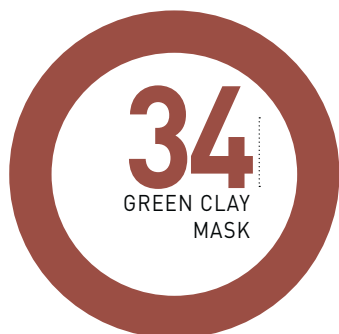


**Distributed by:**

**Global Ingredient Solutions**

Customerservice@ingsolutions.com  
202 Fashion Ln. #202, Tustin, CA 92780  
Phone: (714) 884-3872

PHASE	INGREDIENTS	% WEIGHT
A	KAOLIN	49.000
	ILLITE	49.000
	OPEXTAN®	1.000
	SILIPHOS®	0.500
	CENTEROX™	0.500



#### MANUFACTURING PROCEDURE

Weigh all ingredients of phase A) under mixing.

.....  
 Formulation developed in cooperation with ELLEGI BIOCOSMETICA, Tradate, Italy