

# ROBEEZ®

SPRING/SUMMER 21



[WWW.ROBEEZ.COM](http://WWW.ROBEEZ.COM)

#LOVEMYROBEEZ



# - SNAP BOOTIES -

Easy on, Stay on

Two-snap fitting option helps in achieving the perfect fit

Soft, breathable materials chosen to keep your little one cozy

Non skid outsole prevents tripping & falling

## SNAP BOOTIES SIZE CHART

IF YOUR FOOT LENGTH IS:		YOU SHOULD BUY:	
CM	IN	SIZE	AGE
up to 9	up to 3 1/2	3 m	0-3 mos
up to 9.5	up to 3 3/4	6 m	3-6 mos
up to 11	up to 4 1/4	12 m	6-12 mos



# SNAP BOOTIES

us \$8 | ca \$10.50

SIZES - 0-3M, 3-6M, 6-12M



**GREY STRIPE**

jersey | 0208112



**NAVY STRIPE**

jersey | 0208152



**CAMO OLIVE**

jersey | RBB10111



**SPIRAL TIE DYE**

jersey | RBB10127



**MONSTER TOES GREEN**

minky sherpa | RBB10261



**MONSTER TOES ORANGE**

minky sherpa | RBB10262



**SHARK**

jersey | RBB10275



**CROCODILE**

jersey | RBB10276



**PUPPY**

jersey | RBB10266



**BEAR BROWN**

jersey | RBB10269



**LION**

jersey | RBB10273



**TIGER**

jersey | RBB10274



# SNAP BOOTIES

us \$8 | ca \$10.50

SIZES - 0-3M, 3-6M, 6-12M



**ANIMAL WITH BOW**  
jersey | 0208172



**SPECKLED WHITE**  
jersey | 0208120



**STRIPE LT PINK**  
jersey | RBG10342



**SPIRAL TIE DYE**  
jersey | RBG10126



**MONSTER TOES PINK**  
minky sherpa | RBG10344



**BUNNY**  
jersey | RBG10346



**BEAR PEACH**  
jersey | RBG10347



**UNICORN**  
jersey | RBG10348



**LLAMA**  
jersey | RBG10349



**CLOUD**  
jersey | RBG10350



# - S O F T S O L E S -

## SOFT SOLES BENEFITS

The best shoes mimic bare feet, by supporting – not constricting – tiny, growing feet. Our Soft Soles flex and bend with every step. Their soft suede sole allows feet to grip as they begin to walk and room for little feet to grow.

### Benefits



- **Easy On/Stays On** Elasticized ankle design makes putting and taking shoe off easy for parent
- **Durable Comfort** High quality materials provide comfort and durability
- **Good for Foot Development** Soft, flexible sole allows foot to grip while protecting feet and giving feet room to grow
- **Skid-resistant Sole** Suede sole prevents slipping

## SOFT SOLES SIZE CHART

IF YOUR FOOT LENGTH IS: YOU SHOULD BUY:

CM	IN	SIZE	AGE
9.8	4	1	0-6 mos
11.4	4 7/8	2	6-12 mos
12.4	5 1/8	3	12-18 mos
13.4	5 1/2	4	18-24 mos



# SOFT SOLES

us \$14 | ca \$18

\* us \$15 | ca \$20

SIZES - 1 (0-6M), 2 (6-12M), 3 (12-18M), 4 (18-24M)



**RAMSEY\***

leather | 9465112



**SEBASTIAN SHARK**

leather | 9117150



**DINO DAN**

pu | 5059112



**SPECIAL OCCASION**

leather | 3083120



**BUDDY**

leather | RBB10239



**WILLIE**

leather | RBB10234



**TOBEY**

leather | RBB10237



**FREDDIE**

canvas | RBB10236



**HERO**

leather | RBB10251



**TINY BUT FAST**

leather | RBB10246



**YUM!**

leather | RBB10247



**STYLISH STEVE DK BLUE**

canvas | RBB10256



**LIAM BASIC CHARCOAL**

leather | 8024111



**LIAM BASIC NAVY**

leather | 8024150



**LIAM BASIC RED**

canvas | RBB10242



**LIAM TIE DYE**

canvas | RBB10129



# SOFT SOLES

us \$14 | ca \$18

\* us \$15 | ca \$20

SIZES - 1 (0-6M), 2 (6-12M), 3 (12-18M), 4 (18-24M)



**KATIE**

suede | RBG10302



**HEART BUNNY**

leather | RBG10303



**EVIE\***

leather | RBG10305



**CATICORN**

leather | RBG10315



**STYLISH STACI PINK**

canvas | RBG10316



**LEAH TIE DYE**

canvas | RBG10128



**LITTLE PEANUT**

leather | 4588170



**HOPE**

leather | 9888113



**ANIMAL PRINT**

leather | RBG10319



**MERMAID**

leather | RBG10312



**PINEAPPLE**

leather | RBG10313



**MAGIC WINGS**

leather | RBG10314



**PRETTY PEARL PINK**

leather | 8408171



**PRETTY PEARL GOLD**

leather | 8408181



**MEGHAN PINK**

leather | 9214171



**MEGHAN WHITE**

leather | 9214120



# - F I R S T K I C K S -

## FIRST KICKS BENEFITS

First Kicks is our newest footwear collection! With the fit and flexibility of our Mini Shoez and the feel of our Soft Soles these shoes are the perfect combo.

### Benefits

- **Easy On/Stays On** Elasticized ankle design makes putting and taking shoe off easy for parent
- **Shoe-like Sizing** narrower and snuggler fit
- **Good for Foot Development** Cushioned insole provides protection, comfort and flexibility for healthy foot growth
- **Skid-resistant Sole** Suede sole prevents slipping



## FIRST KICKS SIZE CHART

IF YOUR FOOT LENGTH IS: YOU SHOULD BUY:

CM	IN	SIZE	AGE
8.6	3 3/8	1	0-3 mos
9.4	3 3/4	2	3-6 mos
10.5	4 1/8	3	6-9 mos
11.4	4 1/2	4	9-12 mos
12.4	4 3/4	5	12-18 mos
13.4	5 1/4	6	18-24 mos

full heavier sueded  
outsole - sizes 1-2



split rubber  
outsole - sizes 3-6





# FIRST KICKS

sizes 1-2 (suede outsole) : us \$19 | ca \$24

sizes 3-6 (split rubber outsole) : us \$19 | ca \$24

SIZES - 1 (0-3M), 2 (3-6M), 3 (6-9M), 4 (9-12M), 5 (12-18M), 6 (18-24M)



**OWEN OXFORD**

leather | 7074120



**ADAM**

leather | 0028112



**PARKER TIE DYE**

canvas | RBB10259



**PARKER CHECKERED**

canvas | RBB10260



**FINN GREY**

leather | RBB10265



**FINN NAVY**

leather | RBB10263



**JERRY**

denim | RBB10257



**MIKEY BLACK**

leather | RBB10268



**LUCAS CHARCOAL**

leather | RBB10286



**LUCAS RUST**

leather | RBB10288



**CRITTER FRINGE BLUE**

suede | RBB10270



**CRITTER FRINGE SAND**

suede | RBB10271



**MATTHEW LT BLUE**

leather | 9127154



**MATTHEW NAVY**

leather | 9127152



**JENSON NAVY**

suede | 0030152



**JENSON GREY**

leather | 0030165

# FIRST KICKS

sizes 1-2 (suede outsole) : us \$19 | ca \$24

sizes 3-6 (split rubber outsole) : us \$19 | ca \$24

SIZES - 1 (0-3M), 2 (3-6M), 3 (6-9M), 4 (9-12M), 5 (12-18M), 6 (18-24M)



**ARIA WHITE**

leather | RBG10325



**ARIA PINK**

leather | RBG10326



**BELLA'S BOW PINK**

leather | 8113171



**EVERYDAY ELIZA**

leather | 6043171



**AUDREY**

leather | 8393110



**LOLA**

leather | 0024120



**MAYA**

leather | RBG10329



**LUCY SPARKLE PINK**

canvas | RBG10062



**SOFIA WHITE**

leather | 9123120



**SOFIA BLACK**

leather | 9123110



**SOFIA GOLD**

leather | 9123181



**SOFIA SILVER**

leather | 9123113



**RILEY BLUSH**

leather | 9124171



**RILEY GOLD**

leather | RBG10107



**STRAWBERRY**

leather | RBG10066



**BUTTERFLY**

leather | RBG10067



**CAMELLIA**

seersucker | RBG10072



# - WATER SHOES -

## Splash the Day Away

Keep feet safe and comfortable with these water shoes. Rubber outsole and a neoprene upper, these shoes offer a durable composition and a comfortable fit. These shoes provide a self velcro closure for easy on/off.

### WATER SHOES SIZE CHART

IF YOUR FOOT LENGTH IS: YOU SHOULD BUY:

CM	IN	SIZE	AGE
14.6	5 3/4	5	12-18 mos
15.4	6	6	18-24 mos
16.3	5 3/8	7	2 years
17.1	6 3/4	8	2 1/2 years
18	7	9	3 years
18.8	7 3/8	10	3 1/2 years





# NEW! WATER SHOES

us \$11.25 | ca \$15

SIZES - 5 (12-18M), 6 (18-24M), 7 (2Y), 8 (2.5Y), 9 (3Y), 10 (3.5Y)



**REMI SHARKS**

neoprene | RBB10281



**REMI TIE DYE**

neoprene | RBB10284



**REMI UNICORN**

neoprene | RBG10355



**REMI TIE DYE**

neoprene | RBG10356



# - FINDING THE PERFECT FIT -



## Toddler Shoe Size Measurements

Every child's feet grow differently and at different times. In fact, your child's feet could be smaller or larger than the recommended size for her or his age. That's why it's best to get your child's feet measured every few months.

To measure your child's feet at home, see our FOOT MEASURING TOOL (pg. 14) or use a ruler or tape measure and measure your child's feet. Make sure that each foot is fully extended and double check your child's toes aren't curled.

For the length, measure from the heel to the longest toe. Don't worry if you end up with slightly different measurements: children (and adults) often have size variations between their feet. Using the longest foot, choose a size from the charts below.

Please note, our size recommendation will be slightly larger than your child's foot to provide room for healthy foot growth and for longer usage. If you find yourself debating between two sizes, always opt for the larger of the two, and if your child's feet are particularly chubby consider sizing up based on their measurements

**Please Note: Certain older styles have different sizing. It is best to use the sizing chart on the actual product page to determine the best size for your child.**

## CHECKING FOR COMFORT

Babies and their feet grow quickly, and parents should make sure that their shoes are growing right along with them. Signs that it's time for a larger size include your child frequently removing one or both shoes, teetering, frequent tripping, and dragging toes. You may even notice red marks and impressions on their feet. Whether you're noticing some of these signs, or it's simply been a few months since your child's last measurement, you can easily test the comfort of their shoes.

## How To Measure Baby's Feet

Have your child stand with their weight distributed evenly on both feet. To check length, make sure you can press your thumb between the longest toe and the end of the shoe. Children need about 1/2" of space for the toes to move freely. Next, check that your pinkie can fit snugly between the heel and back of the shoe. To check width, make sure you can grasp some material at the widest part of the foot. Ideally, you should test shoes later in the day, since children's feet swell over the course of the day.

# ROBeeZ

1. For Best results, print this size chart on letter-sized paper (8.5" X 11"). Print as "Actual Size", do not select "Print to scale" in your printer options.
2. Be sure to measure both feet & use the measurement from the larger foot.
3. When in doubt, wiggle room is best. Growing feet & toes need room to properly develop. If your child is between sizes, choose the larger size.
4. Please note: Certain older styles have different sizing. It is best to use the sizing chart on the actual product page to determine the best size for your child.

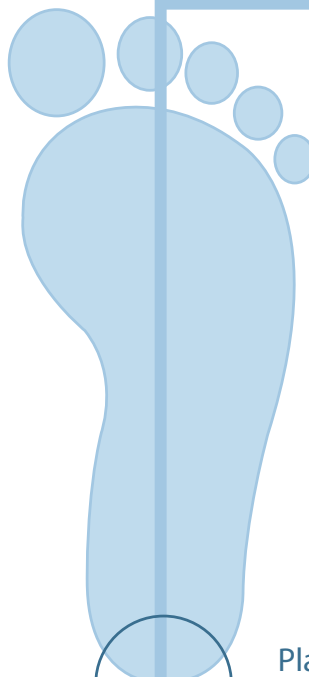


## SOFT SOLES



## FIRST KICKS/MINI SHOEZ

6 in		15 cm
	Shoe Size 4 (18-24 months)	Shoe Size 6 (18-24 months)
		14 cm
5 in	Shoe Size 3 (12-18 months)	Shoe Size 5 (12-18 months)
		13 cm
	Shoe Size 2 (6-12 months)	Shoe Size 4 (9-12 months)
		12 cm
		Shoe Size 3 (6-9 months)
4 in	Shoe Size 1 (0-6 months)	11 cm
		Shoe Size 2 (3-6 months)
		10 cm
		Shoe Size 1 (0-3 months)
		9 cm
		8 cm
3 in		7 cm
		6 cm
2 in		5 cm
		4 cm
		3 cm
1 in		2 cm
		1 cm



Place back of heel here!





# - S O C K S -

## Baby Socks That Stay On

Through all the crawling, napping and play, baby socks are notoriously prone to falling off little feet. An elastic gather at the ankle ensures that our baby socks stay on, while a skid resistant application on the soles helps prevent slips and falls. Our gripper-style baby socks will provide your child with the traction they need to explore their ever-expanding world.

- **Easy On/Stays On** Elastic gather ensures that our socks stay on
- **Baby Socks with Grips** Skid-resistant application on the soles provides extra grip to prevent slips and falls
- **Cotton-rich Fabrication** Breathable socks are comfortable to wear all day
- **Machine Washable** Easy care for busy Mom and Dad

### SOCKS SIZE CHART

SIZE	AGE
0-6 mos	0-6 mos
6-12 mos	6-12 mos
12-24 mos	12-24 mos
2-4 T	2-4 y



# INFANT SOCKS

3-pack: us \$5 | ca \$6.50 / 6-pack: us \$10 | ca \$13

SIZES - 0-6M, 6-12M, 12-24M, 2-4T



**WEEK DAYS GREEN**  
cotton | RBB10418



**JAWS**  
cotton | RBB10423



**SAIL AWAY**  
cotton | RBB10422



**VEHICLES**  
cotton | RBB10419



**FOOD**  
cotton | RBB10424



**RACER**  
cotton | RBB10425



**BOYS BASIC**  
cotton | 3149312



**GOES WITH EVERYTHING**  
cotton | 4648312



**DAILY DAVE**  
cotton | 6485312

# INFANT SOCKS

3-pack: us \$5 | ca \$6.50 / 6-pack: us \$10 | ca \$13

SIZES - 0-6M, 6-12M, 12-24M, 2-4T



**WEEK DAYS TEAL**  
cotton | RBG10372



**HEART CABLE**  
cotton | RBG10375



**UNICORN**  
cotton | RBG10379



**MERMAID**  
cotton | RBG10377



**TIE DYE**  
cotton | RBG10378



**BABY GIRL**  
cotton | 4653370



**LITTLE PEANUT**  
cotton | 8036370



**PRETTY CABLES**  
cotton | 7572352



**HERRINGBONE WEAVES**  
cotton | 9076320



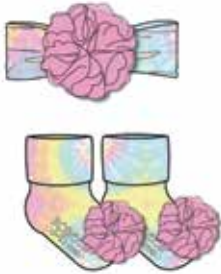
**GIRLY GIRL BASICS**  
cotton | 3156371



# NEW! INFANT GIFT SETS

SIZE - 0-12M

us \$6 | ca \$8

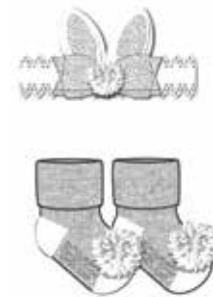


**TIE DYE**  
cotton | RBG10385

us \$5 | ca \$6.65



**DOTS**  
cotton | RBG10384



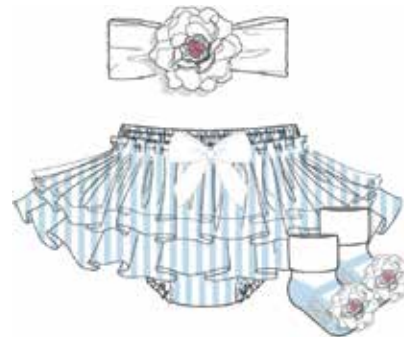
**BUNNY EARS**  
cotton | RBG10386

us \$10 | ca \$13.50



**STARS**  
tulle | RBG10392

us \$11 | ca \$14.50



**STRIPES**  
seersucker | RBG10393

us \$10 | ca \$13.50



**POPSICLE**  
cotton | RBG10387

us \$11 | ca \$14.50



**SNUGGLE**  
cotton | RBG10389

us \$12 | ca \$16



**UNICORN**  
cotton | RBG10390

# NEW! INFANT GIFT SETS

SIZE - 0-12M

us \$7.50 | ca \$10



**WOODLAND**  
cotton | RBB10428



**BASEBALL**  
cotton | RBB10429



**ROAR**  
cotton | RBB10430

SIZE - 0-12M

us \$10 | ca \$13.50



**CARS**  
cotton | RBB10431



**PUPPY**  
cotton | RBB10432



**FISH**  
cotton | RBB10434

# NEW! KIDS' SOCKS

us \$6 | ca \$8

SIZES - 5-6.5, 6-7.5, 7-8.5



**UNICORN**  
cotton | RBG10395



**TIE DYE**  
cotton | RBG10396



**FRUITS**  
cotton | RBG10398



**SHARKS**  
cotton | RBB10438



**CARS**  
cotton | RBB10440



**SPORTS**  
cotton | RBB10442



**SWERVE**  
cotton | RBG10404



**COLOR BLOCK**  
cotton | RBB10083



**FREE RUN**  
cotton | RBG10405



**FREE RUN**  
cotton | RBB10084

us \$9 | ca \$12



# NEW! 1 2 P C G I F T S E T S

us \$15.5 | ca \$21  
SIZES - 5-6.5, 6-7.5, 7-8.5



**TIE DYE CREW PINK**  
cotton | RBG10382



**TIE DYE NS BLACK**  
cotton | RBG10409



**TIE DYE CREW BLUE**  
cotton | RBB10436



**TIE DYE NS NAVY**  
cotton | RBB10452





# ROBEEZ

SPRING/SUMMER 21



Robeez® is a trademark of Daytona Apparel Group.