



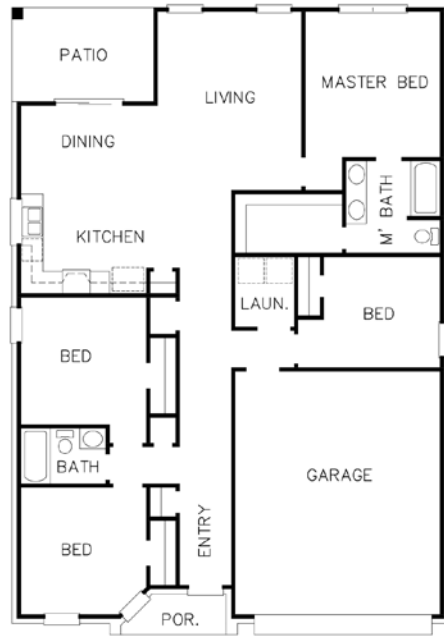
HOMEOWNER MAY REQUIRE MASK

ABOUT THE HOME

- New 4 bedroom home in Longview.
- Live close to everything in Mission Creek.
- Highly rated Hallsville ISD.
- Energy Efficient HERS-Rated home.
- Granite kitchen with stainless steel appliances.
- Full Bermuda sodded yard.
- Full privacy fence.
- Full gutters & downspouts.
- Decorative elevation with Hardie Plank.
- Brand new phase.

SUPPORTED BY

Chief Exterminating  
 City of Longview  
 Conaway Homes  
 Green Science, LLC  
 Home Plus Floors  
 JOTS Rentals  
 Kinzler Construction Services  
 Martin Marietta  
 McCoy's Building Supply  
 Meridian Brick & Masonry Supply  
 Overhead Doors Company  
 Sherwin Williams



BED	BATH	GARAGE	SQ. FT.	SCHOOLS
4	2	2	1,553	Hallsville ISD

MEET THE BUILDER

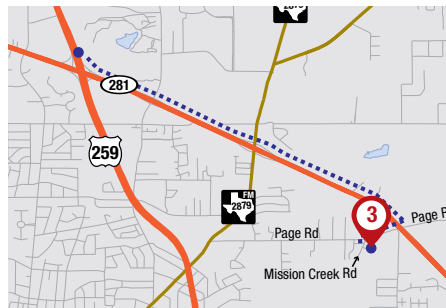


CONAWAY HOMES  
 Brent & Brian Conaway

903-600-5000  
 info@conawayhomes.com  
 www.conawayhomes.com



DIRECTIONS



From Hwy. 259 & Loop 281. Southeast on Loop 281 for 2.6 miles Turn right onto Page Rd. and go 0.3 miles. Turn left onto Mission Creek Dr. The home will be on the right after 0.2 miles.

MISSION CREEK SUBDIVISION • 1138 MISSION CREEK DRIVE, LONGVIEW