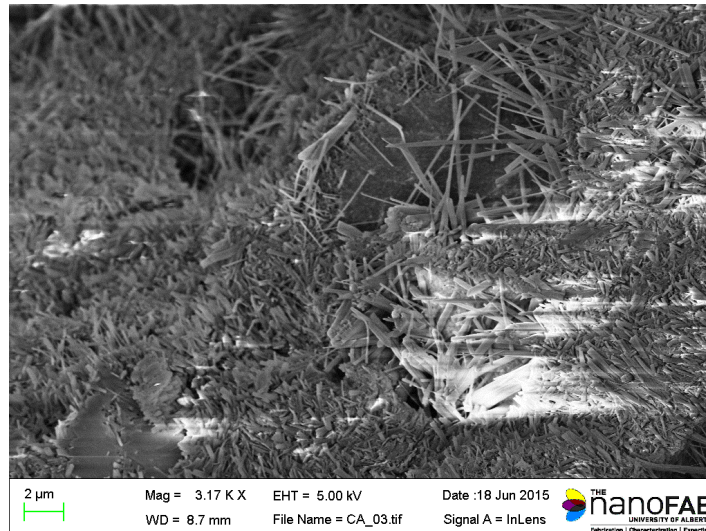


ATI-Composites Mineral Foam Technology.

Description: ATI has developed a nano-crystalline binder that produces a very high strength composite which offers significant advantage over conventional cement-based materials.



The image above shows the results of an SEM image of the final product magnified several thousand times. The long tubular structures accounts for its very high strength.

The next pictures show what happens when this composite binder is mixed with a foaming agent and agricultural waste fiber – in this case - flax fines, a by product from the processing of flax fiber for commercial applications.



This finished product is very lightweight, **fire resistant**, insulating and provides structural support in a SIPs panel application, far in excess of what might be provided from a conventional Expanded Poly Styrene (EPS) core.

For more information contact:
Mike Mabey
ATI-Composites Canada Inc.,
(780) 231-4793
www.ati-composites.com