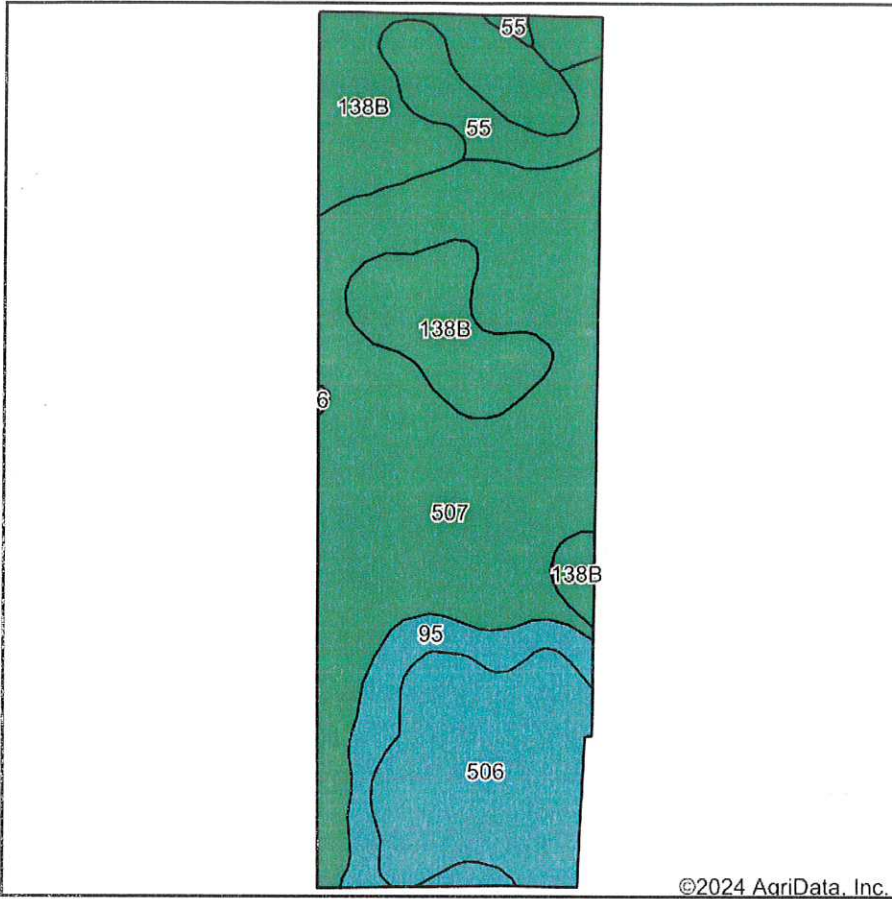
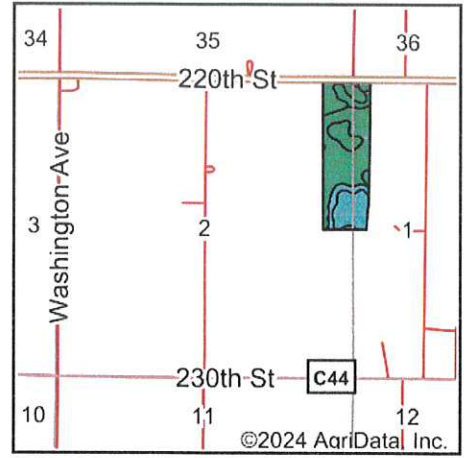


# Soils Map



Soils data provided by USDA and NRCS.



State: **Iowa**  
 County: **Humboldt**  
 Location: **1-91N-27W**  
 Township: **Norway**  
 Acres: **50.12**  
 Date: **7/10/2024**



Maps Provided By:



Area Symbol: IA091, Soil Area Version: 29

Code	Soil Description	Acres	Percent of field	CSR2 Legend	Water Table	Restrictive Layer	Septic Limits	Foundation Limits	Non-Irr Class *c	CSR2**	CSR	*n NCCPI Soybeans
507	Canisteo clay loam, 0 to 2 percent slopes	24.17	48.2%		0ft.	> 6.5ft.	very limited	very limited	IIw	84	78	81
138B	Clarion loam, 2 to 6 percent slopes	10.41	20.8%		2.9ft.	> 6.5ft.	very limited	somewhat limited	Ile	89	80	83
506	Wacousta silty clay loam, depressional, 0 to 1 percent slopes	8.97	17.9%		0ft.	> 6.5ft.	very limited	very limited	IIIw	69	74	79
95	Harps clay loam, 0 to 2 percent slopes	3.49	7.0%		0ft.	> 6.5ft.	very limited	very limited	IIw	72	62	82
55	Nicollet clay loam, 1 to 3 percent slopes	3.08	6.1%		1.5ft.	> 6.5ft.	very limited	very limited	Iw	89	88	81
<b>Weighted Average</b>									<b>2.12</b>	<b>81.8</b>	<b>77.2</b>	<b>*n 81.1</b>

\*\*IA has updated the CSR values for each county to CSR2.

\*n: The aggregation method is "Weighted Average using all components"

\*c: Using Capabilities Class Dominant Condition Aggregation Method

Soils data provided by USDA and NRCS.