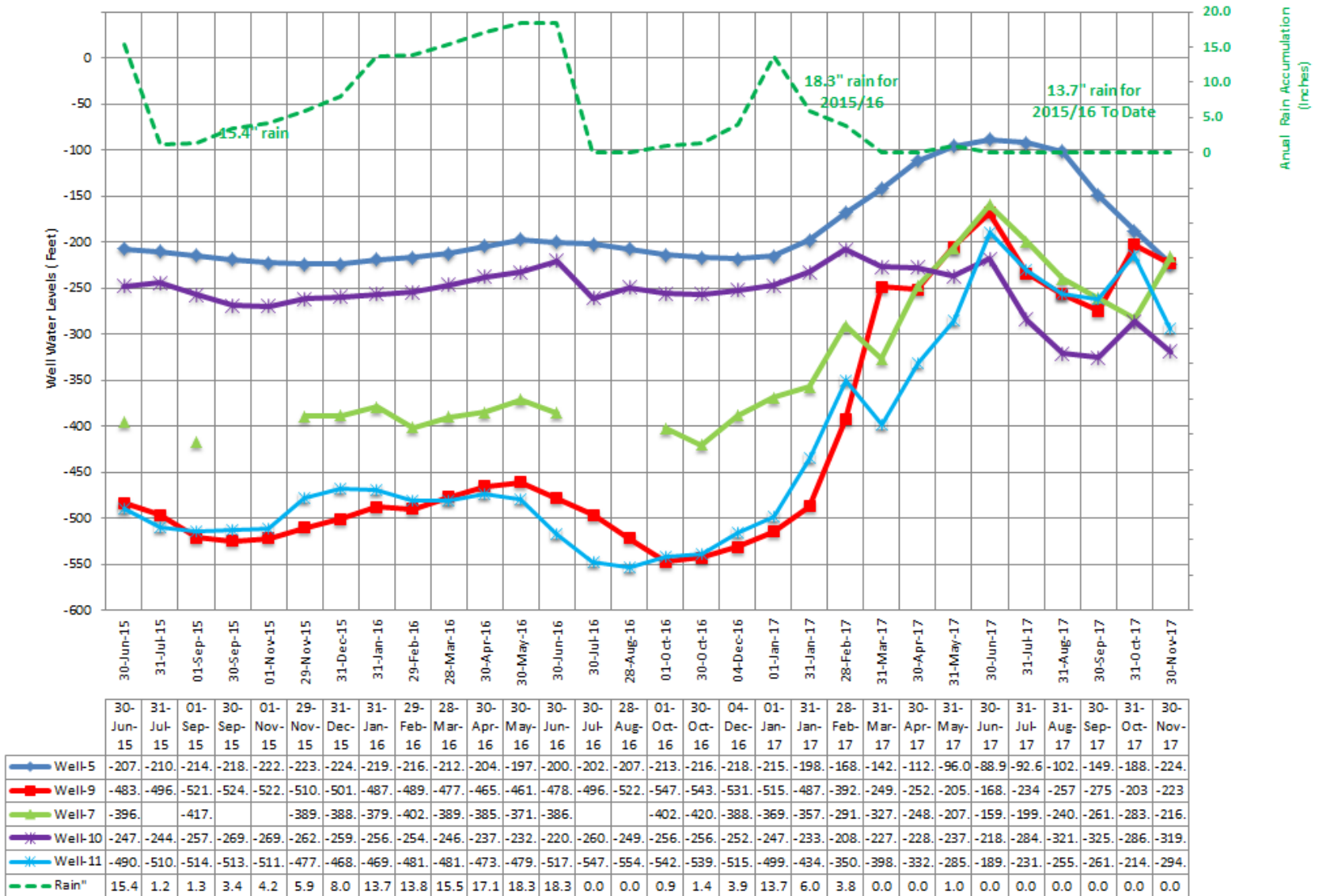
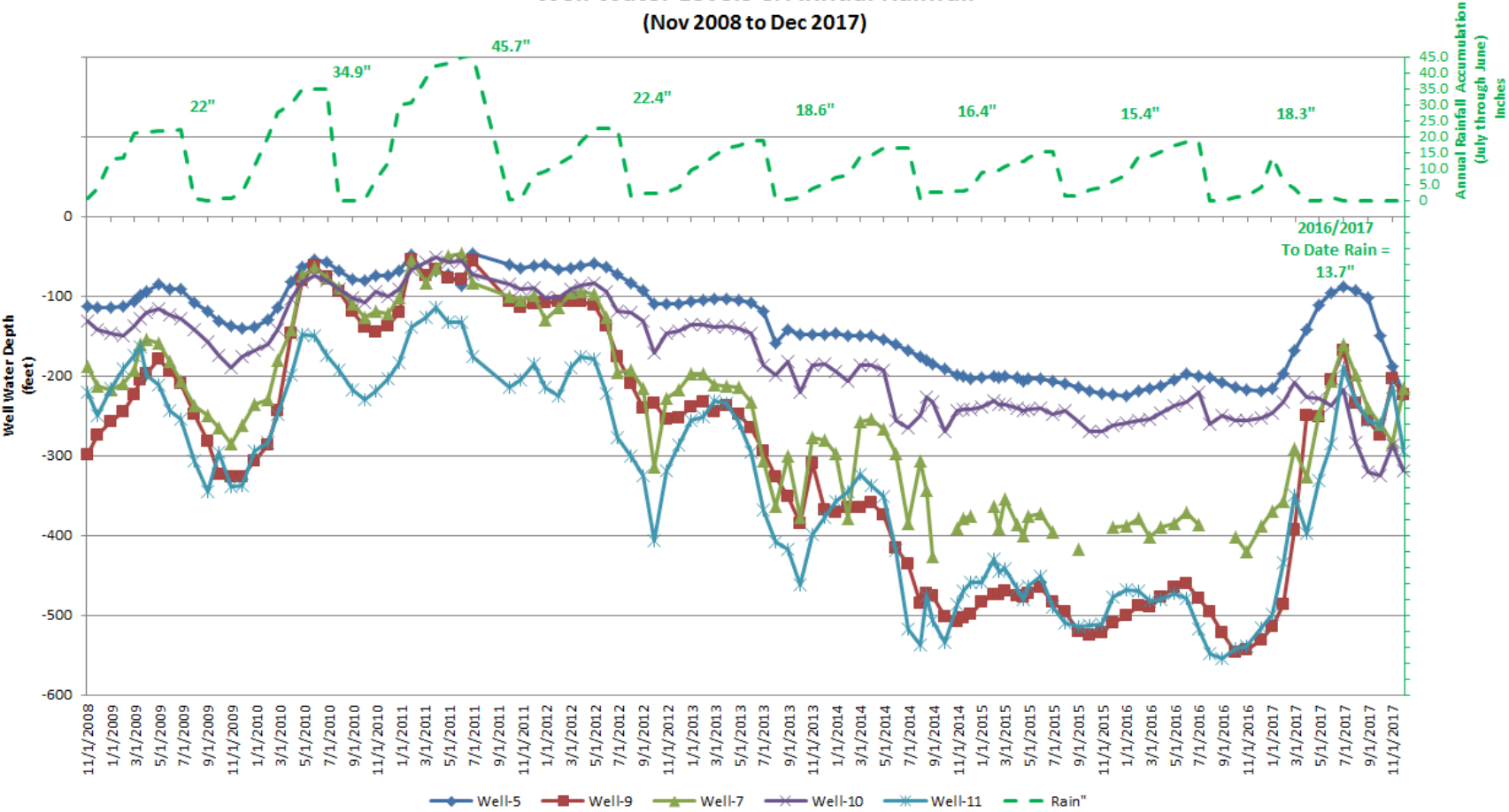


WWD Well Operations thru 12/1/17

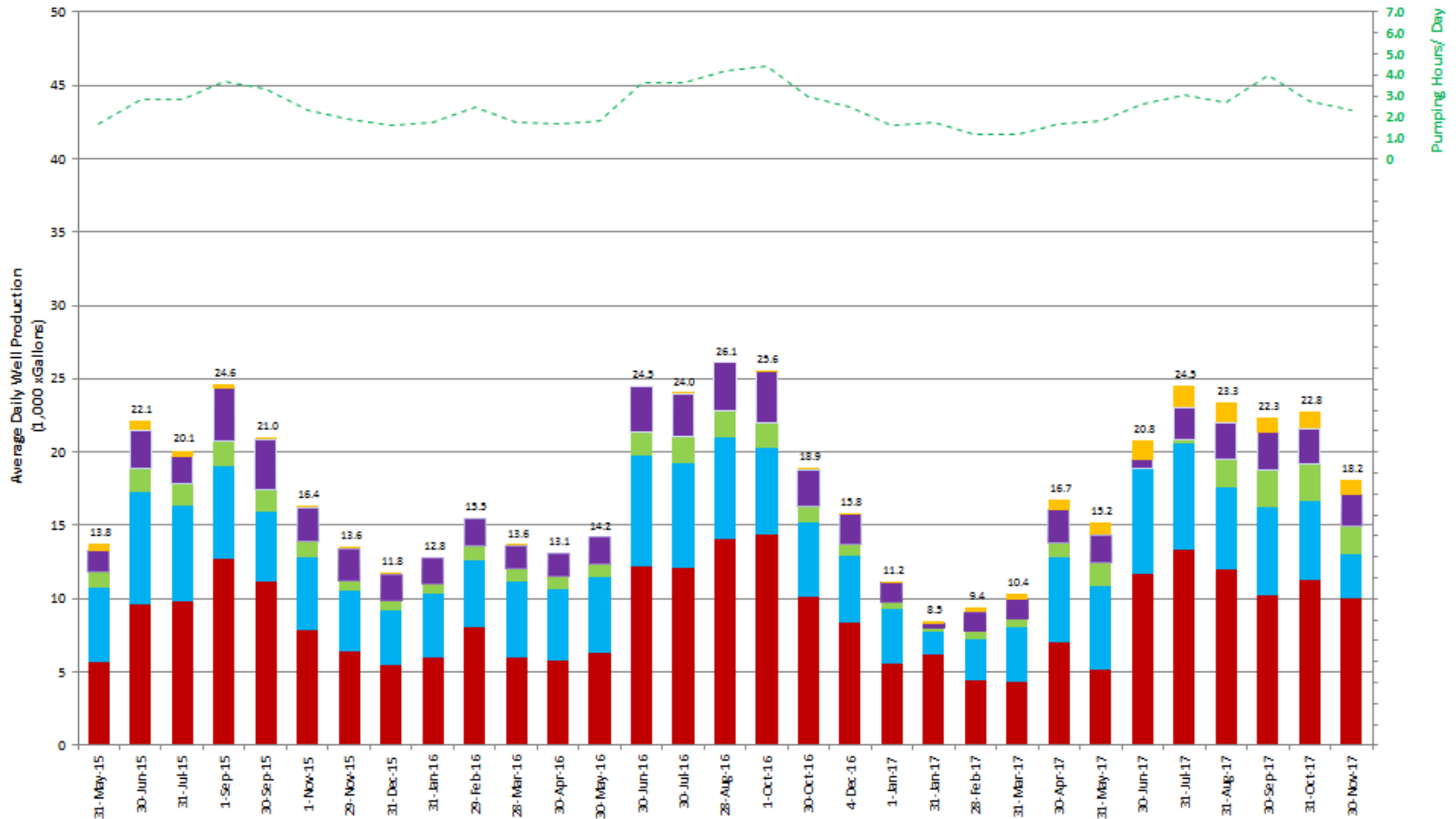
WWD Well Water Levels and Rain - 6/2015 thru 12/2017



Wynola Water District Well Water Levels & Annual Rainfall (Nov 2008 to Dec 2017)

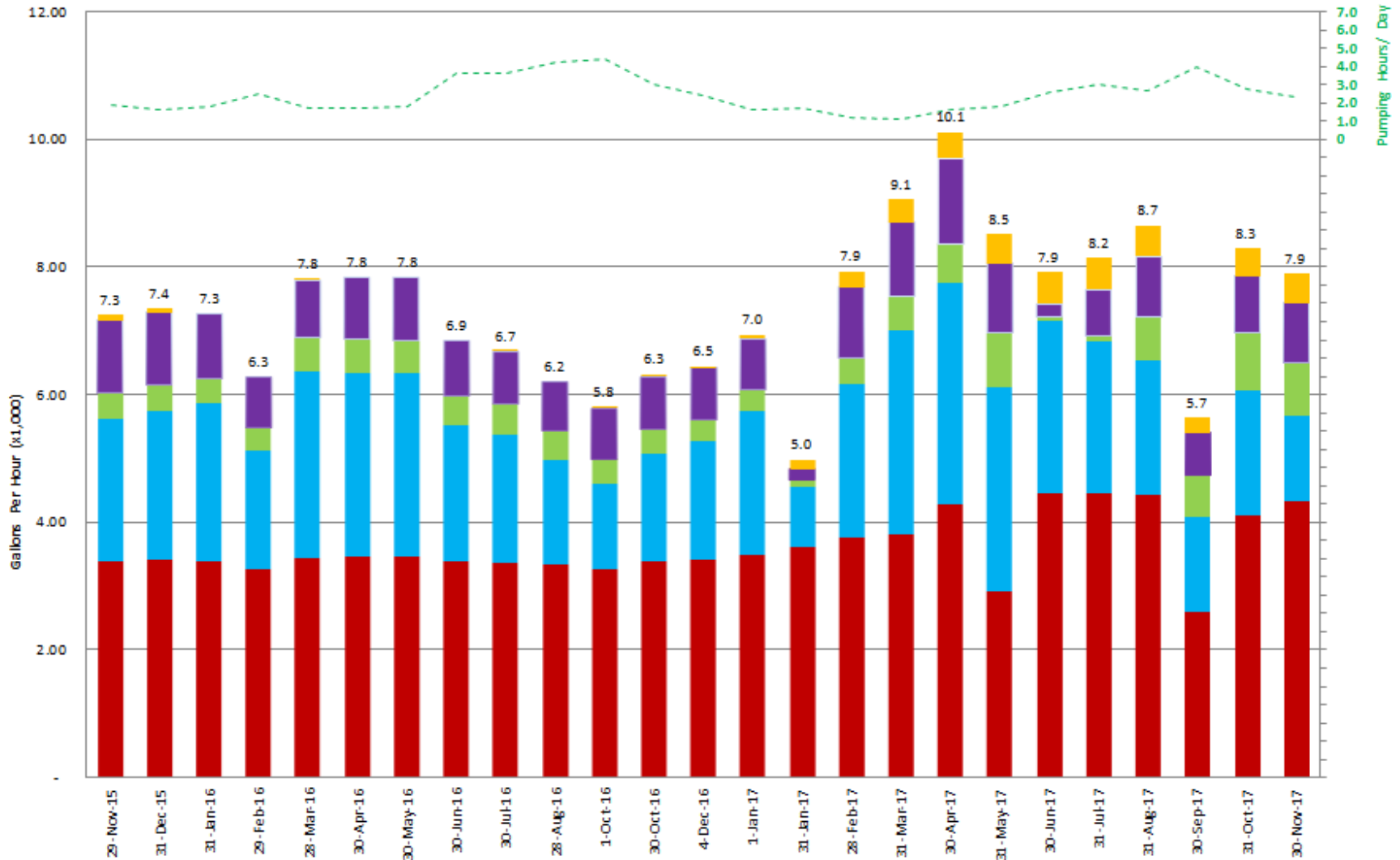


Monthly Average Daily Well Production 5/15 through 11/17



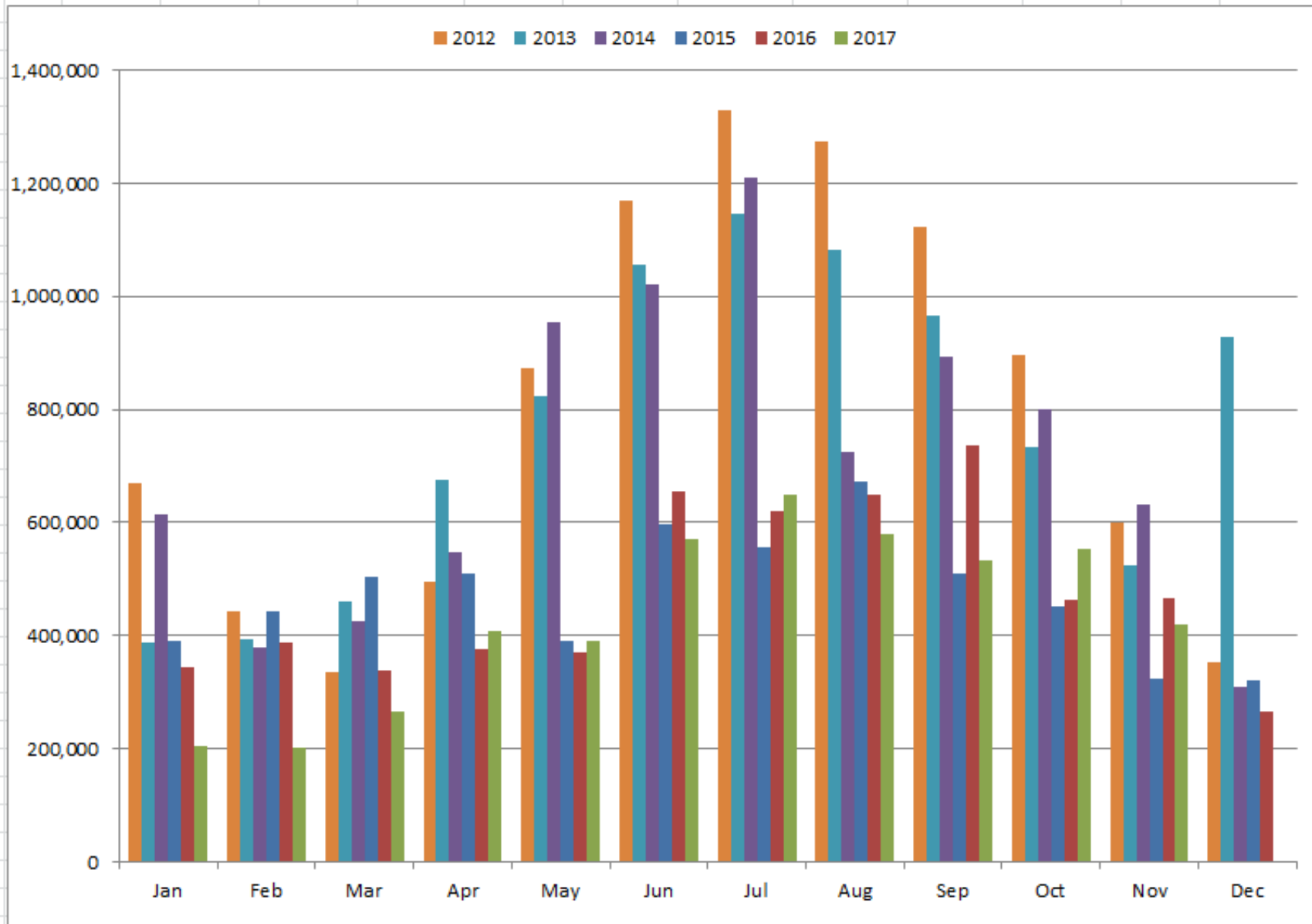
	31-May-15	30-Jun-15	31-Jul-15	1-Sep-15	30-Sep-15	1-Nov-15	29-Nov-15	31-Dec-15	31-Jan-16	29-Feb-16	31-Mar-16	31-Apr-16	30-May-16	30-Jun-16	30-Jul-16	30-Aug-16	28-Sep-16	1-Oct-16	30-Oct-16	4-Dec-16	1-Jan-17	31-Jan-17	28-Feb-17	31-Mar-17	30-Apr-17	30-May-17	30-Jun-17	31-Jul-17	31-Aug-17	30-Sep-17	30-Oct-17	30-Nov-17
Usage KiloGPD	13.8	22.1	20.1	24.6	21.0	16.4	13.6	11.8	12.8	15.3	13.6	13.1	14.2	24.5	24.0	26.1	24.0	26.1	18.9	15.8	11.2	8.5	9.4	10.4	16.7	15.2	20.8	24.5	23.3	22.3	22.8	18.2
well-3 KiloGPD	0.5	0.6	0.5	0.3	0.1	0.2	0.2	0.1	0.0	0.0	0.0	0.0	0.0	0.0	0.0	0.0	0.0	0.0	0.1	0.1	0.1	0.2	0.3	0.4	0.7	0.8	1.3	1.5	1.3	1.0	1.2	1.1
well-10 KiloGPD	1.5	2.6	1.8	3.6	3.4	2.3	2.2	1.8	1.8	2.0	1.6	1.6	1.8	3.1	2.9	3.3	3.5	2.5	2.0	1.3	0.3	1.3	1.3	2.2	1.9	0.5	2.2	2.6	2.6	2.4	2.1	
well-7 KiloGPD	1.0	1.6	1.6	1.7	1.5	1.0	0.8	0.6	0.7	0.9	0.9	0.9	0.9	1.7	1.7	1.9	1.7	1.2	0.8	0.5	0.2	0.5	0.6	1.0	1.5	0.1	0.3	1.8	2.5	2.5	1.9	
well-11 KiloGPD	5.1	7.6	6.4	6.4	4.8	5.1	4.1	3.8	4.3	4.6	5.1	4.8	5.2	7.6	7.2	6.8	5.9	5.0	4.6	3.7	1.6	2.8	3.7	5.7	5.7	7.1	7.2	5.7	5.9	5.4	3.0	
well-9 KiloGPD	5.6	9.7	9.9	12.7	11.2	7.8	6.4	5.5	6.0	8.1	6.0	5.8	6.3	12.2	12.1	14.1	14.4	10.2	8.4	5.6	6.2	4.4	4.4	7.1	5.2	11.7	13.4	12.0	10.3	11.3	10.0	
hours/day	1.6	2.8	2.8	3.7	3.3	2.3	1.9	1.6	1.8	2.5	1.7	1.7	1.8	3.6	3.6	4.2	4.4	3.0	2.4	1.6	1.7	1.2	1.1	1.7	1.8	2.6	3.0	2.7	4.0	2.7	2.3	

Monthly Average Hourly Well Production 11/2015 through 11/2017



	29-Nov-15	31-Dec-15	31-Jan-16	29-Feb-16	28-Mar-16	30-Apr-16	30-May-16	30-Jun-16	30-Jul-16	28-Aug-16	1-Oct-16	30-Oct-16	28-Nov-16	1-Dec-16	30-Jan-17	4-Feb-17	1-Mar-17	31-Mar-17	28-Apr-17	31-May-17	30-Jun-17	31-Jul-17	30-Aug-17	31-Sep-17	31-Oct-17	30-Nov-17
Usage (Gal/Dayx1,000)	13.6	11.8	12.8	15.5	13.6	13.1	14.2	24.5	24.0	26.1	25.6	18.9	15.8	11.2	8.5	9.4	10.4	16.7	15.2	20.8	24.5	23.3	22.3	22.8	18.2	
Total (Gal/Hrx1,000)	7.3	7.4	7.3	6.3	7.8	7.8	7.8	6.9	6.7	6.2	5.8	6.3	6.5	7.0	5.0	7.9	9.1	7.9	8.5	7.9	8.2	8.7	8.7	5.7	8.3	7.9
WELL-3 (Gal/Hrx1,000)	0.08	0.06	-	-	0.00	-	-	-	0.00	-	0.01	0.04	0.03	0.07	0.14	0.25	0.35	0.41	0.46	0.49	0.49	0.48	0.24	0.44	0.46	
WELL-10 (Gal/Hrx1,000)	1.15	1.14	1.01	0.79	0.91	0.97	0.99	0.87	0.82	0.78	0.79	0.82	0.82	0.80	0.17	1.12	1.17	1.34	1.09	0.21	0.74	0.95	0.66	0.88	0.94	
WELL-7 (Gal/Hrx1,000)	0.41	0.40	0.39	0.36	0.52	0.53	0.50	0.46	0.49	0.45	0.38	0.39	0.32	0.33	0.12	0.41	0.52	0.62	0.85	0.06	0.08	0.68	0.64	0.91	0.84	
WELL-11 (Gal/Hrx1,000)	2.21	2.34	2.47	1.86	2.93	2.87	2.87	2.11	2.01	1.63	1.34	1.68	1.86	2.27	0.94	2.40	3.21	3.47	3.20	2.71	2.39	2.10	1.50	1.96	1.32	
WELL-9 (Gal/Hrx1,000)	3.41	3.42	3.40	3.28	3.45	3.47	3.48	3.41	3.37	3.36	3.28	3.40	3.42	3.49	3.62	3.76	3.81	4.29	2.93	4.46	4.45	4.44	2.60	4.11	4.35	

WWD WATER PRODUCTION 2012-2017



	Jan	Feb	Mar	Apr	May	Jun	Jul	Aug	Sep	Oct	Nov	Dec
2012	670,160	441,940	334,450	494,640	872,030	1,169,120	1,330,290	1,273,780	1,123,600	895,840	599,640	352,310
2013	387,510	393,160	461,360	676,160	824,240	1,055,240	1,145,290	1,081,190	966,190	734,290	524,460	928,750
2014	613,660	379,820	426,270	548,130	954,380	1,022,020	1,209,990	725,490	892,400	799,610	630,920	307,870
2015	389,820	441,930	504,690	508,650	389,770	596,190	557,000	673,680	508,990	451,200	322,340	319,590
2016	344,100	387,900	337,220	377,400	369,700	655,900	619,260	650,100	736,500	462,910	465,640	266,050
2017	205,250	201,940	265,860	406,910	390,970	570,970	647,960	580,660	531,650	552,917	418,553	