

**Centrifugal Drum Pump Motor Models:
SP-410EX, SP-420EX, SP-280P, SP-ENC, SP-A1 & SP-A2**

SP-280P Spare Parts Lists

SP-280P See Figure 2

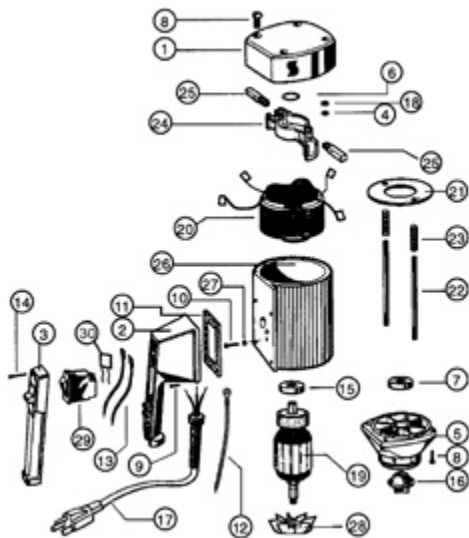


Figure 2 – SP-280P

Ref. #	Description	P/N for SP-280P	Qty
1	Motor Cover	8000	1
2	Switch Housing	8001	1
2A	Switch Housing for Variable Speed, Includes Potentiometer		
	110-120V	8004	1
	220-240V	8005	1
3	Switch Cover	8002	1
4	Lock Washer	8071	2
5	Lower Housing	8100	1
6	Wave Washer	8125	1
7	Ball Bearing	8126	1
8	Screw for Plastic Housing	8130P	8
9A	Screw, 110-120V	8131	4
9B	220-240V	8131LVR	4
10	Ground Screw	8162	1
11	Gasket, 110-120V	8167	1
	220-240V	8167LVR	1
12	Earthing Lead	8183	1
13	Lead	8185	2
14	Screw	8220	5
15	Ball Bearing	8331	1
16	Motor Coupling	8333	1
17	Power Cord w/Strain Relief & Plug		
	110-120V	8360	1
	220-240V	8705	1
18	Hexagon Nut	8448	2
19	Armature, 110-120V	8502	1
	220-240V	8701	1
20	Stator, 110-120V	8503	1
	220-240V	8502	1
21	Guide Disc	8504	1
22	Rod Connector	8506	2
23	Pressure Spring	8507	2
24	Brush Holder	8508	1
25	Carbon Brush, 110-120V	8509	2
	220-240V	8703	2
26	Motor Housing, Plastic	8510P	1
27	Star Washer	8511	1
28	Fan	8512	1
29	Overload Switch,		
	8.5 amp 110-120V	8611	1
	5 amp 220-240V Low Voltage Release	8704LVR	1
30	EMI Filter	8003	1
31	Repair Kit 110-120V (includes PN's 8333 & (2) 8509)	9055	1
32	Repair Kit 220-240V (includes PN's 8333 & (2) 8703)	9056	1

SP-280P Series motors should not be used to pump flammables.