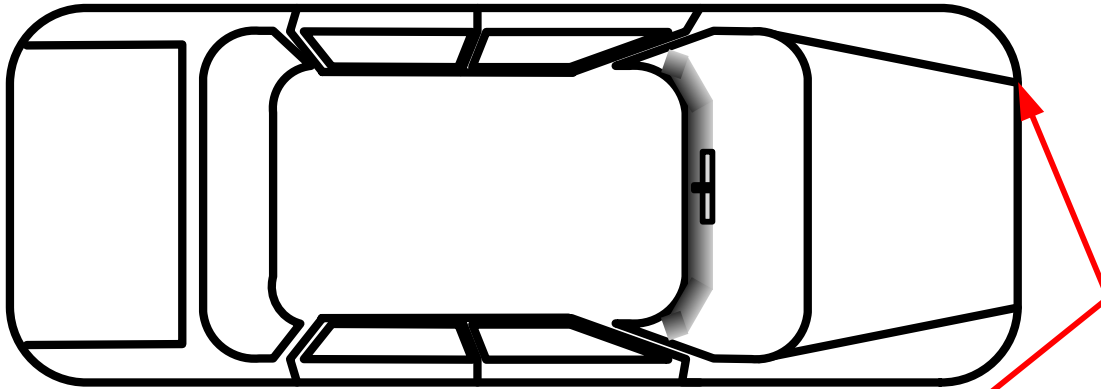
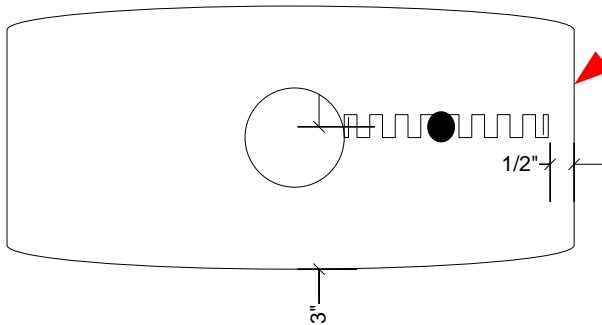


## 3M Headlight Tag Placement – Left Side Reader



### Note:

- Clean thoroughly the plastic headlight cover where the 3M Tag will be placed.
- Tags must not be with 6" of another RFID Tag
- For best results the tag should be placed in a position that will be within read plain of the 3M RFID antenna (not hidden).
- Tags can also be placed on any **PLASTIC** surface, including bumpers without metal directly behind plastic, within the read plain of the 3M RFID antenna (not hidden)
- Tag Center Chip must be 3" from any metal
- Tag must not be directly in front of light bulb
- Tag must be installed Horizontal



Center Dot/Chip must be 3" away from any metallic Materials to the side or **BEHIND**

\*\*Please note that while most tags may show the break on remove feature shortly following application, there is an 80% cure of the adhesive within 1 hour, with the tag reaching its full adhesive cure within 24 hours of application.