



*Hatteras-34*

DOUBLE CABIN

**ANOTHER BLUE WATER BEAUTY...**

the Fiberglass Hatteras-34 Double Cabin  
has more interior space for pleasure afloat  
than any boat in its class.

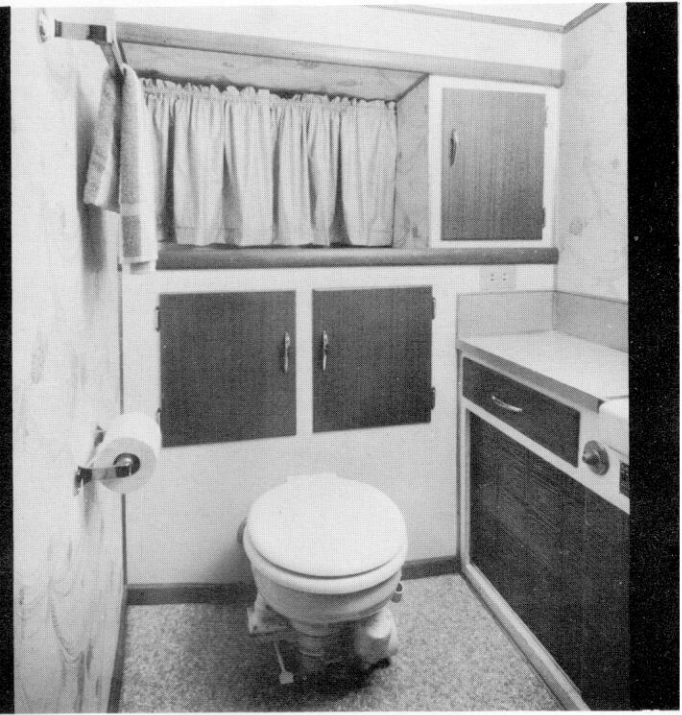




Full-width-beam main salon. Wall to wall carpeting with foam backing. Four 110-volt outlets. Vinyl head of Philippine mahogany. Salon companionway to flush deck has water-tight hatch, plus port and star doors entering from catwalk. Large sliding windows with screens. Sofa bed. Windshield opens for addition



Bow stateroom has two spacious bunks with polyfoam mattresses and drawers for storage. Hatch to foredeck is screened. Full length clothes locker. Rope lockers. Two 110-volt outlets. Vinyl floor covering.



Spacious bow head is opposite the galley. Has ample storage cabinets below lavatory and vanity with additional linen storage in bulkhead. Two 110-volt outlets. Vinyl floor covering.

Designed for the true boating enthusiast, the Hatteras-34 Double Cabin has details and options to assure you of comfortable cruising and many luxuries for a home afloat. The "decorator-designed" interiors are beautiful, yet practical and warm. There is ample storage space throughout.

Low-cost maintenance is assured by the one-piece molded reinforced fiberglass hull and fiberglass superstructure. Water tanks and fuel tanks are also made of reinforced fiberglass. The floors are covered with easy to clean vinyl, and carpet with long wear and easy care. Lessens work.

The H  
 beautif  
 and exci  
 boat suc  
 tenance



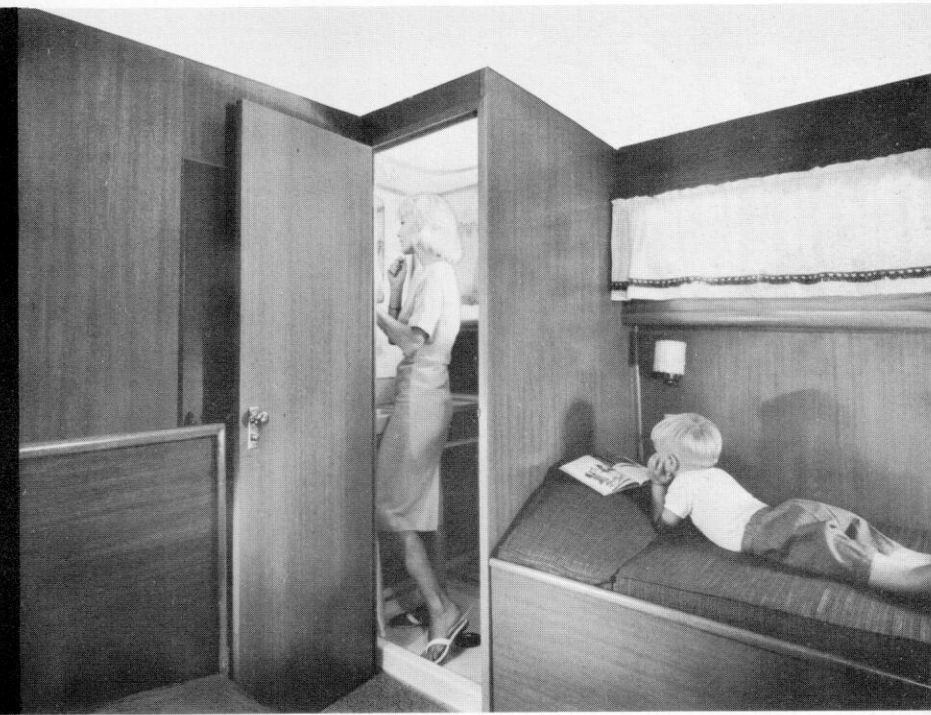
Interior view of cabin showing desk with chess set, lamp, and window with curtains.



Efficient, roomy galley has two-burner electric stove, 10 cu. ft. refrigerator, ample dish lockers, glass rack and storage space, stainless steel sink, hot and cold pressure water. 110-volt outlets for appliances.



Master stateroom has built-in drawers beneath screened windows to an escape hatch. Built-in bunks have polyfoam mattresses. Four 110-volt outlets. Large hanging clothes locker.



Aft head has lavatory and vanity, linen lockers; waterproof wall and vinyl deck. Shower with curtains and hot and cold pressure water. Medicine cabinet with mirror. Two 110-volt outlets.

Hatteras-34 Double Cabin is not only spacious and comfortable but brings you safety and stability . . . enjoyment never before experienced when handling a boat as this; plus the wonderful feeling that your main worries are reduced to a minimum, at a savings.

See specification sheet for list of standard and optional equipment

**HATTERAS YACHT COMPANY**  
HIGH POINT, NORTH CAROLINA





This sleek Hatteras hull has proved to be a big step forward in boat design . . . this one-piece molded shape was possible because fiberglass allowed the architect more freedom in design than with traditional materials. This hull has a greater degree of safety. It is a more exciting boat, a boat with speed and stability . . . even in the roughest offshore waters yawing and pounding are virtually eliminated. A fiberglass Hatteras provides more of everything except maintenance.

The new "34" DC has more room for fun . . . more room for cruising luxury than even many larger boats. The flush deck is roomy . . . ideal for gatherings or for comfortable cruising. There are no bulky ribs and beams in the fiberglass Hatteras, so there is more usable interior space, beautifully finished and decorated. Full facilities and sleeping accommodations for six persons with complete privacy.



Printed in U.S.A.

(Some items optional)

