

H-RS-LOGIX Programming and Documentation Software

Purpose

The Hampden Model H-RS-LOGIX is one option that provides the ability to program the Model H-PLC-PP-ML-1200 Programmable Logic Controls Training System.

The H-RS-LOGIX incorporates all of the latest technologies to help you maximize performance, save project development time and dollars and improve functionality. Consisting of powerful functionality and superior diagnostics, its design yields an unbeatable productivity tool. Reliable communications, combined with an industry-leading user interface, make it the programming solution for both novice and professional developers providing everything you've come to expect in a ladder logic programming software package and more:

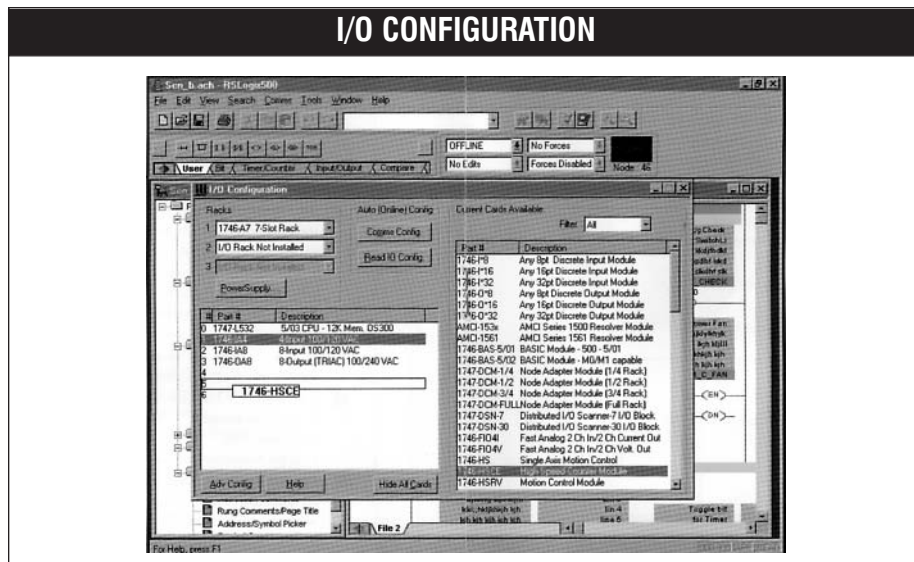
- offline/online programming
- I/O module layout and configuration
- database editing
- symbolic addressing
- cross reference information
- advanced troubleshooting features
- reporting

Plus point-and-click Microsoft® Windows® environment.

Features

H-RS-LOGIX takes full advantage of the power of Microsoft's 32-bit operating systems. When entering instructions, simply click, drag, and drop, placing the instructions on the desired rungs. The editor allows you to create several rungs at the same time and a powerful ASCII editor gives you the ability to enter rungs quickly by entering the instruction mnemonics and parameters.

- Consolidate and display all project information as a "Project Tree," with easy Point-and-Click accessibility.



- Online and offline edition sessions are limited only by the amount of RAM you have available.
- Drag instructions to the desired rung instead of typing the instructions with the keyboard. Drag-and-Drop editing lets you quickly move:
 - instructions from rung-to-rung within a project,
 - rungs from one subroutine or project to another,
 - or data table elements from one data file to another.
- Or, type the instruction mnemonics and parameters and H-RS-LOGIX creates the rung. It's that easy.
- Add addresses to instructions using:
 - Data Table Monitor,
 - Database Files,
 - or, the Address/Symbols Picker.
- Edit several rungs simultaneously, and/or program ladder logic using symbols that you have not yet assigned addresses, using the flexible *Program Editor*. This lets you concentrate on creating the application logic you need, and not on complex syntax as you enter your instructions.
- Correct program errors at your convenience by reviewing a list generated by the *Project Verifier*. This is beneficial because addresses assigned to the symbols may change. The use of symbols makes programming easier to save and reuse for other projects.

Accurate and Painless I/O Configuration

- Point-and-click or drag-and-drop a module from an all-inclusive list to assign it a slot in your configuration using the *I/O Configurator*.
- Read your I/O configuration automatically with the click of a button, reducing the possibility of placement error or incorrect module selection.
- Configure specialty modules easily using the *Advanced Configuration* options.

All Hampden units are available for operation at any voltage or frequency

Hampden
ENGINEERING CORPORATION

Programmable Logic Control Trainers

Educational Training Equipment for the 21st Century

Database Editing

- Build and classify groups of symbols using the *Symbol Group Editor* so you can easily select portions of your recorded documentation to be used from project to project.
- Assign addresses or symbols to your ladder instructions using the *Symbol Picker* list and a mouse click.
- Use as much *Rung Description Text* as you need to accompany your ladder logic. Your documentation is limited only by the amount of hard disk space you have available.

Assistance on Demand

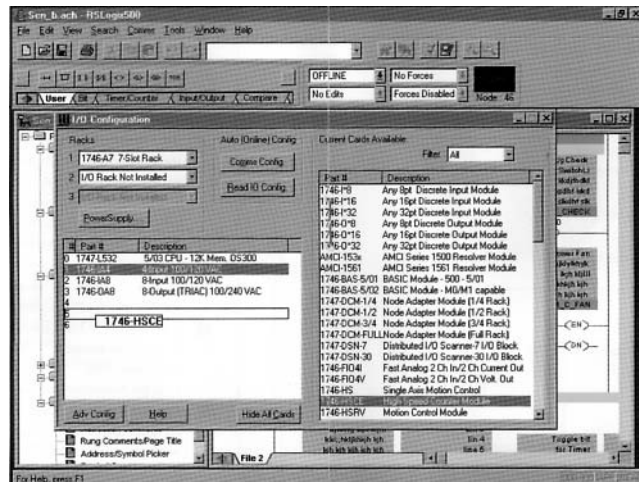
- If you do not understand an **H-RS-LOGIX** function or if you have a question about a processor instruction, help is just a mouse-click away.
- The **H-RS-LOGIX** online *Help System* is fully comprehensive; even including step-by-step instructions to lead you through many common activities and application scenarios.
- The complete MicroLogix 1200 *Instruction Set Reference* is also included for quick and easy referral.
- By simply clicking the right-mouse button on an address, symbol, instruction, rung, or other application object, the context-menu, provides immediate access to common software tools and a number of editing options. These tools save time with complex tasks because you don't have to remember the placement of functionality options in the menu bar.

System Requirements

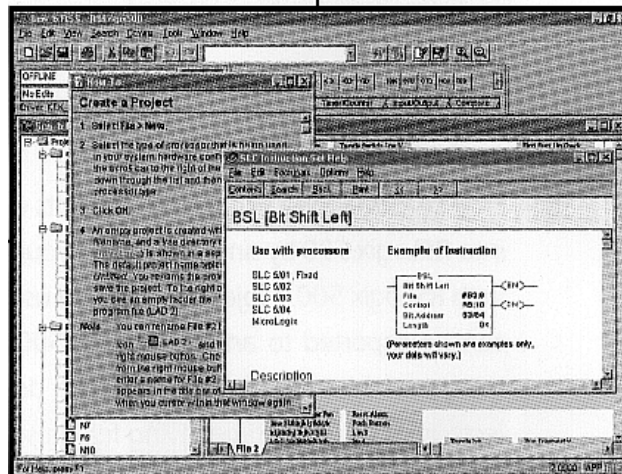
Hampden MODEL H-PLC-CS Computer System

Provides all necessary capabilities to perform as a learning base for the Hampden PLC Series of training systems. The computer system is American-made for the 21st century. It is a fast and rugged system built with expansion capacity for future upgrades.

ADDRESS/SYMBOL EDITOR



INSTRUCTION SET HELP



Minimum Recommendations

- IBM - compatible 486/66 (Pentium™ optimal)
- 8 MB RAM (16 MB optimal)
- 8 MB of Hard Disk Space
- VGA Graphics Adapter 640 x 480 or greater resolution (800 x 600 optimal)
- Any Windows-compatible pointing device

Also Available

H-RS-LOGIX-LT

The "light" version of the RS-LOGIX Program. Allows all of the same functions, except "online" programming, diagnostics, and troubleshooting.

All Hampden units are available for operation at any voltage or frequency

Hampden
ENGINEERING CORPORATION