

EPIPHANY

THE REVEALING OF CHRIST

“WHO AM I”

Christmas ends with the Epiphany Season. In Epiphany, Jesus turns up the light we received on Christmas Eve. It is meant to shine in and through us as we serve the Lord. In Epiphany, Jesus' light reveals His mission. Where do you see yourself in that mission?

In the Gospel for the First Sunday after Epiphany, Jesus is baptized by John the Baptist. A dove flies from heaven and a voice is heard, "And a voice from heaven said, 'This is my Son, the Beloved, with whom I am well pleased.'" (Mt.3.17) Do you see the dove? Do you hear the voice? Where are you? Were you standing close so that you could hear and see, or were you somewhere in the back?

The Second Sunday after Epiphany we hear John the Baptist telling two of his disciples that Jesus is the Lamb of God, and they leave John and follow Jesus. Jesus also calls others to follow Him. Would we follow Jesus? Is He calling us? Who are we? Do we hear Him, and how do we respond?

The Third Sunday after Epiphany Jesus calls Peter and Andrew simply by saying, "Follow me." Do you hear His call?

The Fourth Sunday after Epiphany (Feb. 2nd), Jesus is talking about God's reign in the Beatitudes. Where are you in the crowd? Are you one of those up front wanting to hear every word, or are you sitting someplace in the back?

In the Fifth Sunday of Epiphany (Feb. 9th), when the Gospel is read, we hear Jesus speaking to us. Do you hear Him? We are the salt of the earth; we are the light. Do you hear Him; for He is speaking to you. But where are you? Who are you?

The Sixth Sunday of Epiphany (Feb. 16th), Jesus is speaking to us about issues we don't like to talk about: anger, forgiveness, and adultery. Here again we ask, where are we? Who are we?

Transfiguration Sunday (Feb. 23rd) ends the Epiphany Season as we read about Jesus going up on a Mountain, and there appears with Him Moses and Elijah. At this point, I believe, when Jesus comes down off the mountain, His ministry changes as He heads toward Jerusalem. He calls His disciples to follow Him. Where are you? Are you walking with Jesus; for He knows He is going to die, so every word is important.

After Transfiguration Sunday, we begin our Lenten journey with Ash Wednesday (Feb. 26th). At the Ash Wednesday service, we have an Ash cross placed on our forehead accompanied by the words, "Remember you are dust and to dust you shall return." Wow! Here we have been following Jesus, and now we are dust? But then we receive the Sacrament of Holy Communion. Do we come forward as those who have been following Jesus, allowing His light to shine, or do we come forward as those who have just hung around? The question remains for each one of us: "Who Am I?"

Yours in Christ,
Pr. DeMoss



March 6,
4:00 & 7:00
Imposition of Ashes



Blood Mobile

*Want to make a donation
without spending any money?*

**The Red Cross Blood Mobile will be at First on
February 20th, from 12-6pm.**

Make a New Year's resolution to be a blood donor this year. Give a small amount of yourself to help someone else. It is a gift that continues. Watch for the sign-up to be a blood donor or cookies and brownie donor.

Remember the **Automated External Defibrillator (AED)** and other First Aid items are located in the cupboard in the kitchenette, easily identified by the signage on the cupboard door. The AED and First Aid items are not toys, but kept for use in an emergency.



How Do We Care For Each Other?

By Communication! Please let the church office or a pastor know about a change in your life, such as a hospitalization, being confined to a home, even temporarily, the death of a loved one, etc.

If you notice the absence of a brother or sister from worship, leave a note on the back of your yellow "Footprints" or call the church office or pastor. Our pastors are prepared to support you in times of change and adjustment.



2020 VISION for Stewardship

Focusing on MISSION GIVING

“in Christ God was reconciling the world to himself... and entrusting the message of reconciliation to us. So we are ambassadors for Christ.”- 2 Cor. 5: 19-20a

Why do we give to the Church? There is a *personal* reason: “I support my home and family. The Church is my second home and family. I give to support this family as well.” There is a *practical* reason: “I am a member of the church. It is my duty and obligation to support the church through my finances and time.” And then, the *spiritual* reason: “I give out of gratitude and thanks to God for all of my blessings.” But there is a fourth reason, as well: “I give to support the mission of the Church.”

In their book, *Field Guide for the Missional Congregation*, Rouse and Van Gelder quote Dave Dauber, Director of Congregational Renewal for the ELCA: “The reason God made the church was to call forth a community of allies, God is looking for allies in mission and each of us and each of our congregations has a role to play as God’s dream unfolds. That role is our purpose. Mission is God’s work to bless and save the world. Our purpose is our part in God’s work.”

“To bless and save the world.” A daunting task! Yet, every time you put your offering in the plate (or use your computer to make an offering), you are participating in this saving work. As Dauber says, “a role in God’s dream”!

And every time you contribute to the work of this congregation, you are supporting the saving work of the Church in Findlay, the U.S.A. and even in Africa, China, India and Indonesia.

It is true that when a congregation is evidently engaged in mission, in not just *being* but *doing* something for others, when we are without doubt allies in the mission of the Lord, it will bring us together and will be a witness to the world. Making a financial commitment is not just paying the bills but actively participating to “bless and save the world” through the Lord Jesus Christ.

“To join a congregation is to respond to God’s call to join in God’s mission as a steward. This means that congregations consist, not of members with rights and privileges, but rather as disciples who live out the full meaning of the gospel. Congregations are to do this as a community that is both gathered to nurture its own life and sent into its larger community to serve the needs of others.” - Rolf Jacobson



The Northwestern Ohio Synod’s Emphasis for 2020 is “The Year of Mission.”
“During 2020: The Year of Mission, we will aspire to grow as we participate in God’s Mission through three distinct practices:

- To discern the Mission of God through prayer, Scripture, and sacred conversation;
- To align the identity and work of God’s people and parishes with the Mission of God;
- To participate in the Mission of God for the renewal of Northwest Ohio and the world.”

—Bishop Daniel Beaudoin

The Altar Guild Needs YOU!!

Do you have about 30 minutes a week for one or two months a year? If you do, and you like to work with candles, altar paraments and duster then the Altar Guild is for You! The commitment for a member of the Atar Guild is to sigh up for one month to maintain our altar in the sanctuary and in the chapel. The Altar Guild has NOTHING to do with Communion preparation or clean up! The Altar Guild members dust, fill the candles and make sure the correct color of altar paraments adorn the altar. All this activity takes about 30 minutes a week and can be completed on Friday or Saturday. New members will be paired with an existing member for training. Husband and wife teams are welcome!! Think about it and give Cindy Fitzpatrick, Chairman, a call and join a much needed organization in our church.



Level 1 - Worship & meetings will be held as scheduled.

Level 2 - Worship will be held - use your discretion; Meetings—Check with your chairperson to see if your meeting has been canceled. Please be safe.

Level 3 - All worship and events are canceled.



Julie Buck - JABuck67@hotmail.com
Secretary

Cindy Fitzpatrick - cbfrenfitz@aol.com
Vice-President

Tim Franks - Tfranks75@hotmail.com

Elaine Freemyer-Ashley -
ElaineAshley2000@yahoo.com

Rob Leipheimer - RLeip@sbcglobal.net

Sam Ried - SamRied112@gmail.com
Youth Representative

Karen Rose - KRose13395@gmail.com

Daryl Rotman - Rotman4@aol.com

Maria Schell - biddy45@aol.com

Jeff Short - JFShort1991@gmail.com

Arlene Shriner - ollie2bob@aol.com

Alex Treece - AlexTreece@yahoo.com

Jenny Welte - JBWelte@frontier.com
President



EPIC Youth

February
 2-Ice Skating @
 The Cube 1:00- 3:00
 9-Group Time, Games
 6:00
 16-Group Time, Games
 6:00
 23-Movie Night @
 Church 6:00

March
 1-Bowling @ Sportsman
 Lanes 2:00-4:00
 8-Guessing Game
 Fundraiser @ Church
 6:00
 15-Group Time, Games
 6:00
 22-Group Time, Games
 6:00
 29-Service Proect
 TBA

Confirmation - February 5, 12, 19, 26 @7:00 pm;



February 4th , 11:30 @ Café Maries

NewsLetter DEADLINE

Monday February 17th

Food Cart Requests



Toilet Paper, Dish Soap, Cereal

All donations benefit Lutheran Social Services

February's Noisy Offering will benefit



PRAYER CHAIN

A prayer chain is a way for people to gain assistance in prayer for any serious and pressing issues they might have in life.

Prayerfully consider this opportunity to carry out God's plan for us to love one another. Sign your yellow sheet and list your email address if you are interested in joining our team of prayer warriors. Questions??? Call Sue DeMoss at 419-423-7109 or Jane Ebersole at 419-422-9640

Women of the ELCA

Feb. 5. Snowflake Social

6:30 - 8:00pm; Fellowship Hall. All women are welcome to come for good food, "girl"ship, and lots more.

- Feb. 11 9:00am - Martha Circle, in the library.
- 9:30am - Rachel Circle, in the lounge
- Feb. 17 7:00pm - Hannah Circle, in the lounge.
- Feb. 23 Cookie Sunday, Hannah Circle

BOLD WOMEN'S DAY—FEBRUARY 23, 2020 Celebrate the Bold Women in Your Life

BOLD WOMEN'S DAY 2020

Bold Women's Day—observed annually on the fourth Sunday of February—celebrates all Lutheran women who have acted or are acting boldly on their faith in Jesus Christ. Some women are bold in their unceasing prayers. Other women are bold in their service to those in need. Still other women are bold in their advocacy or through their hospitality. Whether we live out our bold story of faith in the workplace, family home or community, our faith compels us to make a difference in the lives of others. It's all about living out our baptismal call, about being a disciple of Christ. *Are you bold?*

Library News

As you read this, I hope I am basking in the sun of the Florida Keys. I am sure you know I write these ahead of time ... who knows where I will be at the actual publication time.

- And here is earth-shattering info just in case you did not know:
- When using a moisturizer with SPF, people miss 17% of their faces. We tend to miss the area around the eyes.
- Also, you're distracted for 27 seconds when using voice-activated demands in your car. At highway speeds, it's enough to travel the length of three football fields and possibly crash.
- Americans pay an average of \$1141 in credit card interest each year. A common issue is that people don't realize when their interest rate has gone up. Always check your monthly bill; if you see an increase, call to negotiate a reduction. Pay off cards with the highest interest rates first.
- Thirteen is the percentage of people with vision problems who say they've never gotten an eye exam from an ophthalmologist.
- One to two servings of mushrooms a week can help reduce your risk of mild cognitive impairment (a precursor of Alzheimer's) by 43 percent.
- New research shows that each hour of exercise helps reduce the aging of the brain

- And now let's talk about cholesterol care: 0 grams of trans fats is the daily amount you should aim to consume. Steer clear of hydrogenated oils.
- Forty minutes is the length of aerobic exercise (like dancing, cycling, swimming or brisk walking) three to four times a week that can reduce cholesterol.
- A high fiber diet can lower cholesterol up to 10%.
- 5% to 6% of daily calories should come from saturated fats to maintain optimal heart health. Cut back on red meat and whole-fat dairy products.
- Sleep deprived folks have a hard time

interpreting happy and sad facial expressions, but no trouble recognizing anger, fear, surprise and disgust. Researchers think the latter are more important for survival. Luckily, just one night of recovery zzz's restores our face-reading skills.

- And finally...we often equate a deep breath with a deep inhale, but there is a lot of value in a deep exhale. This simple exercise not only calms the mind but also helps you step into the new year with renewed determination. Sitting up tall but relaxed, take a comfortable inhale through your nose. Breathe out through your nose, going all the way to the end of your exhale, and pause. Then just wait – your body will tell you when it's time to breathe in again. Let the breath out, allowing yourself to feel empty for a moment. Then breathe in when your body says it's time. Repeat two or three times and move forward with your day. – Edward Jones

- I am so grateful to all those kind members who keep our library well-stocked. The final count for this past year's library book accession is 31 used and new books donated. Six other books donated in memory of deceased church members, one Kindle reader with audible capabilities through Bluetooth donated in memory of a deceased church member and one used Nook reader. And I cannot forget the candy fairies. That candy you all enjoy every Sunday (and during the week) is often donated by some nameless candy fairies. All I know is bags of candy just show up periodically in the cupboard. God bless all of you.

Keep reading.
Kathy Brooks



The Endowment committee has distributed the funds for all Restricted accounts for 2020. The following funds were given to the appropriate committees:

Schlee Fund for Special Maintenance	\$957.34
McCracken Fund for Candles, Worship and Music	\$184.10
Bradley Fund for Current Benevolence	\$ 85.92
Yammine Fund for Youth Activities	\$1,071.35

First Lutheran appreciates all those who continue to support the current Restricted accounts and other funds within the Endowment guidelines to ease the financial needs of our church both physical and spiritual into the future. Any size gift is beneficial to these needs.

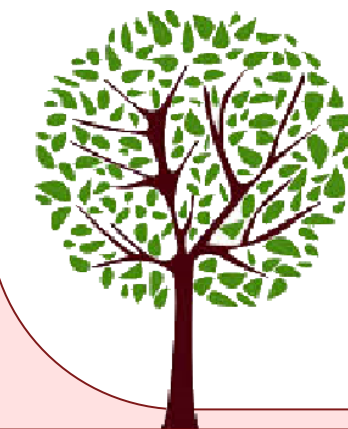


Scholarship applications are now available on the bulletin board and in the church office for two scholarships from the Endowment Fund.

The Endowment General Scholarship is available for voting members and their dependents attending a Christian Theological Seminary, a Lutheran affiliated college or university regardless of major, or any Christian college or university if majoring in areas of Christian ministry.

The Jeffrey Allan DeMoss Scholarship was established for members of First Lutheran Church by Paul and Sue DeMoss in memory of their son, Jeff. This scholarship will be awarded to a student who is an active member of First Lutheran between the ages of 18 and 25, attending a nationally accredited college or university with a declared major in health, religion, and/or social work professions. Examples of professions include but are not limited to social work, counseling, psychology, nursing, medicine, youth work, ministry, and mental health. Applicants must also be of good Christian character and be making use of their talents in a manner that is pleasing to God. No one person may receive the scholarship award more than twice.

Deadline for Submitting applications and letters of recommendation is March 31st. The recipient(s) will be selected and notified on or before June 1st. A total of \$6,336.24 for the General Scholarship and \$633.15 for the Jeffrey Allan DeMoss Scholarship is available to be awarded. Any questions, please contact any Endowment committee member or the church office.



February 2020

Sun	Mon	Tue	Wed	Thu	Fri	Sat
						1-Feb 1:30pm Pipe Organ Tour
2	3	4	5	6	7	8
8:15am & 10:45 Worship 9:30am Sunday School 11:30am Community Dinner 1pm EPIC Ice Skating @ The Cube	10:30am Ladies Bible Study 6:30pm Worship & Music 7pm Stewardship/ Evangelism	11:30am Pastors Lunch 4:15pm Riehm Farm 5pm Girl Scouts 7pm Book Club	6:30pm Snowflake Social 7pm Confirmation	3:30pm Prayer Group 4:30pm Organ Rehearsal 6:30pm Diakonia 7pm Sr. Choir	9:30am Bulletin Assembly	9:30am Bulletin Assembly
9	10	11	12	13	14	15
Noisy Offering/Kids Choir 8:15am & 10:45 Worship 9:30am Sunday School 6pm EPIC Talent Show and Dessert Contest	10:30am Ladies Bible Study 7pm Property 7pm Social Ministry	9am Martha Circle 9:30am Rachel Circle 4:15pm Riehm Farm 5pm Girl Scouts 7:30pm Finance	7pm Confirmation 7pm Endowment 8pm Theology Pub	3:30pm Prayer Group 4:30pm Organ Rehearsal 6:30pm Diakonia 7pm Sr. Choir	9:30am Bulletin Assembly	9:30am Bulletin Assembly
16	17	18	19	20	21	22
8:15am & 10:45 Worship 9:30am Sunday School 6pm EPIC	10:30am Ladies Bible Study 12pm Newsletter Deadline 7pm Hannah Circle	1:30pm Staff Meeting 4:15pm Riehm Farm 5pm Girl Scouts	7pm Confirmation	12pm Bloodmobile 3:30pm Prayer Group 4:30pm Organ Rehearsal 6:30pm Diakonia 7pm Sr. Choir	9:30am Bulletin Assembly 6:00pm BSA	9:30am Bulletin Assembly 6:00pm BSA
23	24	25	26	27	28	29
8:15am & 10:45 Worship 9:30am Sunday School	10:30am Ladies Bible Study 6:30pm Council Meeting	Newsletter Assembly 4:15pm Riehm Farm 5pm Girl Scouts	7pm Confirmation	3:30pm Prayer Group 4:30pm Organ Rehearsal 7pm Sr. Choir	9:30am Bulletin Assembly	9:30am Bulletin Assembly

February Volunteers



*Newsletter Deadline
Monday, February 17th
Bulletin Deadline
Wednesdays by noon*

LECTORS
Feb 2
8:15-Jeff Kamm
10:45- Toni Poling

Feb. 9
8:15-Acolytes
10:45-Acolytes

Feb. 16
8:15- Shirley Gerber
10:45- Arlene Schriener

Feb. 23
8:15-Jeff Kamm
10:45- Elaine Timbrook

GREETERS
Feb 2
8:15-Tom & Linda Mitchell
10:45- Toni Poling

Feb. 9
8:15-Matthew & Carol Meyer
10:45-Kids of the Kingdom

Feb. 16
8:15-Dave & Shirley Gerber
10:45-Kristen & Greg Johnson

Feb. 23
8:15-Jeff & Jennifer Kamm
10:45- Judy Kipker

ACOLYTES
Feb 2
8:15-Grant Welte
10:45- Gianna Masterlasco, Erin Meier

Feb. 9
8:15-Grant Welte
10:45-Phoebe Treece, Erin Meier

Feb. 16
8:15-Grant Welte
10:45-Casey Leipheimer

Feb. 23
8:15-Grant Welte
10:45-Gabby Gomez, Abby Roberts

SOUND ROOM
Feb 2
8:15-Tim Roth
10:45- Steve Roth

Feb. 9
8:15-Dave Gerber
10:45-Todd Thompson

Feb. 16
8:15-Sam Ried
10:45-Jerry Bryant

Feb. 23
8:15-Tim Roth
10:45-Todd Thompson

ALTAR FLOWERS
Feb. 2-Toni & Dennis Poling
Feb. 9-
Feb. 16-Mike & Chris Meyer
Feb. 23-Marie Schwartzkopf
Erika Cunningham
Forms for your bulletin
announcement are available
on the bulletin board and at
1stLutheranChurch.org.
Flowers need to be delivered to
the church by noon on Friday.

ALTAR GUILD
Julie Buck, Amber
Leipheimer

COUNTERS
Randy & Julie Buck

LSS DELIVERY
Marty Schmidt

FLOWER DELIVERY
Julie Buck

COMMUNION BREAD
Feb. 2- Renee Smith
Feb. 9-Janet Wobser
Feb. 16-Cindy Thompson
Feb. 23-Suzanne Kirk

DEACONS
8:15
Sue DeMoss
Jeff Kamm

10:45
Jerry Bryant
Daryl Rotman
Dean Bowser

8:15 USHERS
Dave Wobser
Jim Schoerger
Richard Ruehle
Nick Thomas

WORSHIP ASSISTANTS
8:15/10:45
Feb. 2-Tim Franks
Feb. 9-Pastor Chris
Feb. 16-Rob Leipheimer/Traci Roth
Feb. 23-Tim Cochran

DRIVERS
Feb. 2-Jerry Bryant
Feb. 9-Mike Zawisza
Feb. 16-Aaron Ried
Feb. 23-Pam Cochran

FOOD FOR THOUGHT
Feb. 2-Mike & Amy Tabler
Feb. 9-Kurt & Jane Ebersole
Feb. 16/23 Elaine Timbrook

COOKIE SUNDAY
Feb. 2- Community Dinner
Feb. 9- Council
Feb. 16-Endowment/Finance
Feb. 23-Hanna Circle

Celebrations

Seth Franks	2/1
Joan Swisher	2/1
Steven Rodman	2/2
Erin Meier	2/3
Breanna Tabler	2/3
Dean Bowser	2/5
Nancy Haffelder	2/5
Janice Wagner	2/5
Amy Masterlasco	2/6
Seth Rakestraw	2/6
Richard Ruehle	2/6
Janet Baker	2/7
Barb Smith	2/7
Angela Huff	2/8
Clarke Huff	2/8
Erik Nielsen	2/8
Steve Brossia	2/9
Julie Buck	2/9
Cheryl Seibert	2/11
Jane Ebersole	2/13

Birthdays

Elliot Holbach	2/15
Nancy Bahler	2/17
Yvette Mains	2/19
James Maurer	2/19
Kylee Timbrook	2/19
Michelle Dale	2/20
Cloyce Baker	2/22
Steve Leopold	2/22
Casey Leipheimer	2/23
Nathan Leipheimer	2/23
Fred Parish	2/24
Elaine Ashley	2/26
Traci Roth	2/26
Victoria Cox	2/27
Taylor Polder	2/27

Baptism

Thomas Fitzpatrick	2/1
Debra McMillen	2/1
Carson Dale	2/2
Voleta Willford	2/2
Denise Burson	2/7
Elizabeth Kutschbach	2/12
Heather Nielsen	2/12
Mary Lou McCann	2/13
Yvette Mains	2/16
Charlotte Holbach	2/18
Reed Blunk	2/19
Jordan Spoon	2/24

Congratulations

Tom & Mary Beth Dillon	2/14/1999	21
Richard & Marilyn Schweitzer	2/24/1957	63
Steve & Laura Leopold	2/28/1998	22



109 E. Lincoln Street
Findlay, OH 45840

NONPROFIT ORGANIZATION
US POSTAGE PAID
FINDLAY, OH
PERMIT NO. 338

Current Resident or:



Mailed around
Jan. 29, 2020

You are a beloved child of God.

Sunday Worship 8:15 & 10:45 Sunday School at 9:30
Www.1stLutheranChurch.org 419-422-2638