

# *Pattern*

Design Book



*Proudly Serving the Mattress  
Industry Since 1986*

*Class I*  
*Standard Patterns*

\* Design has multiple configuration

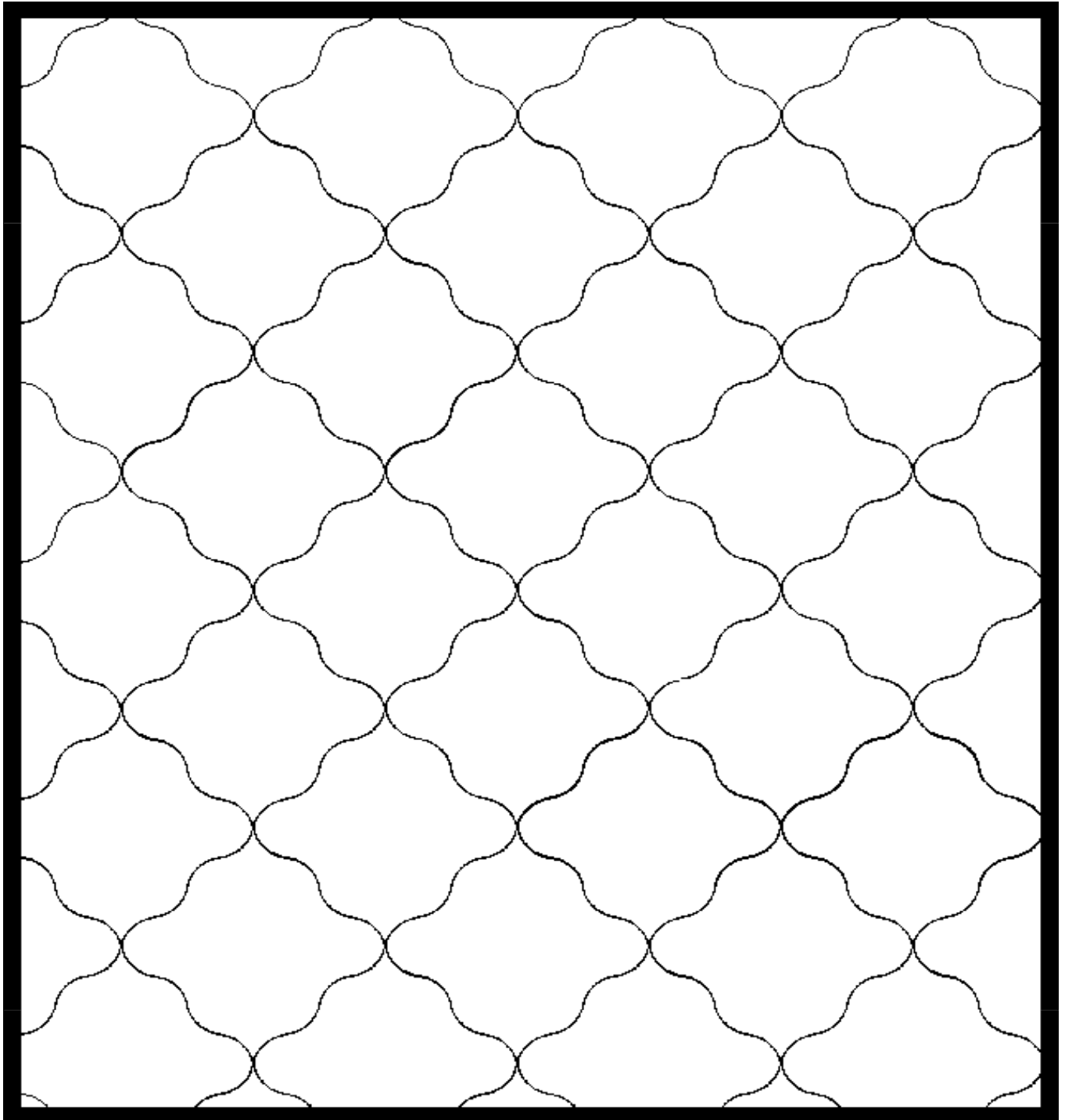
~ Design has two configuration

*Design#*

**206~**

**6" and 12"**

---



# *Class I*

## *Standard Patterns*

\* Design has multiple configuration

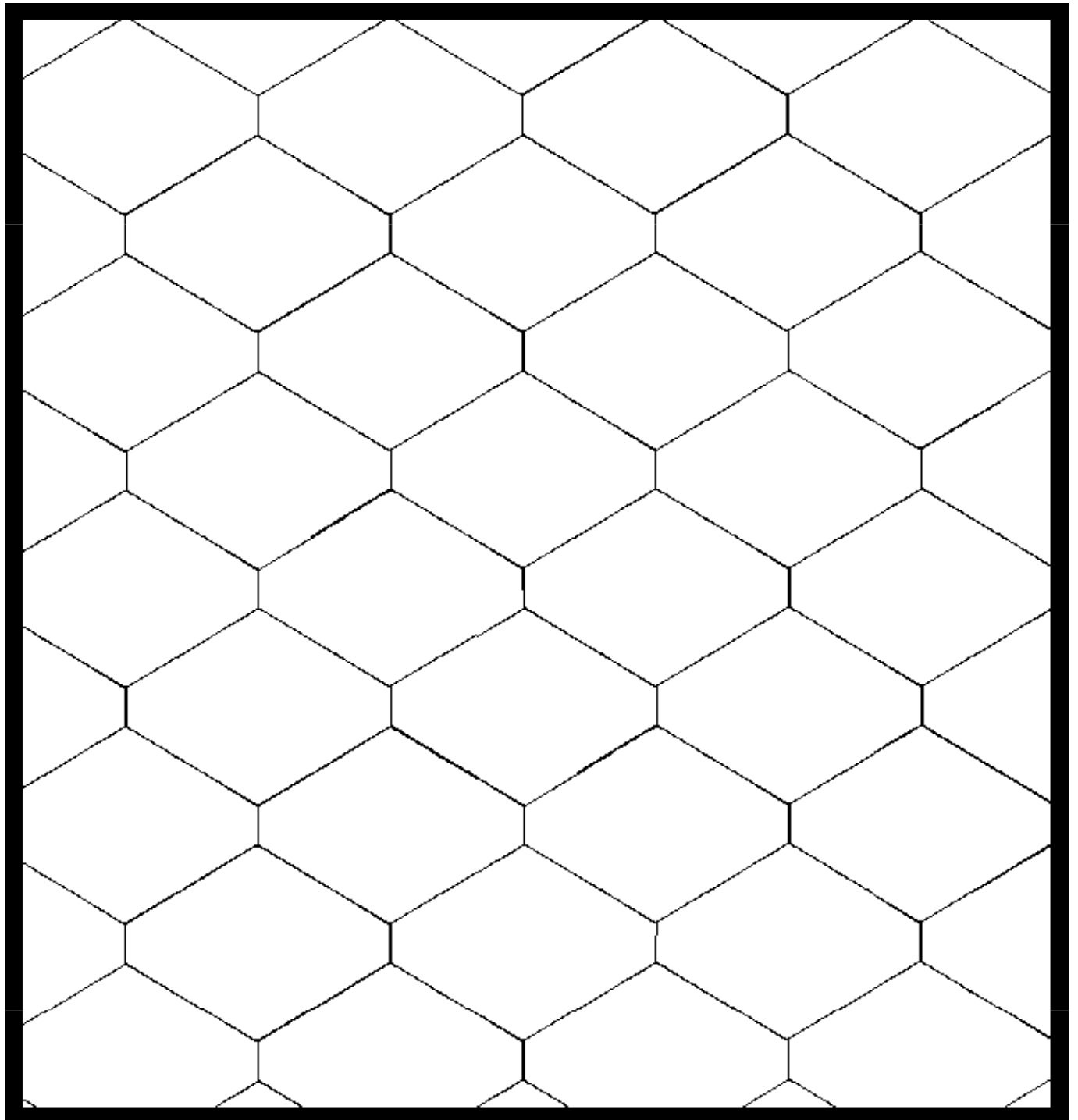
~ Design has two configuration

*Design#*

***213~***

***6" and 12"***

---



*Class I*  
*Standard Patterns*

\* Design has multiple configuration

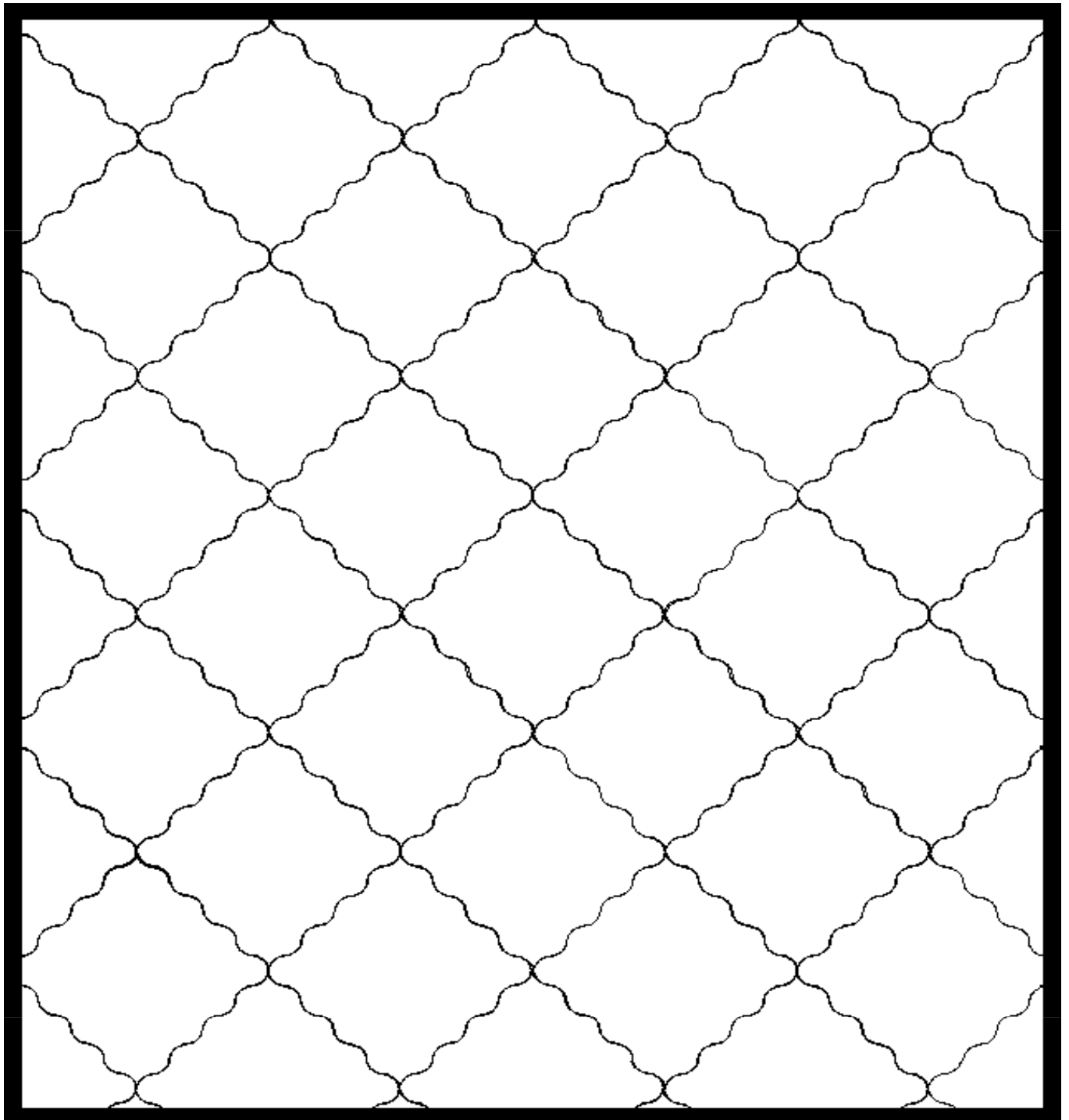
~ Design has two configuration

*Design#*

***301~***

***6" and 12"***

---



*Class I*  
*Standard Patterns*

\* Design has multiple configuration

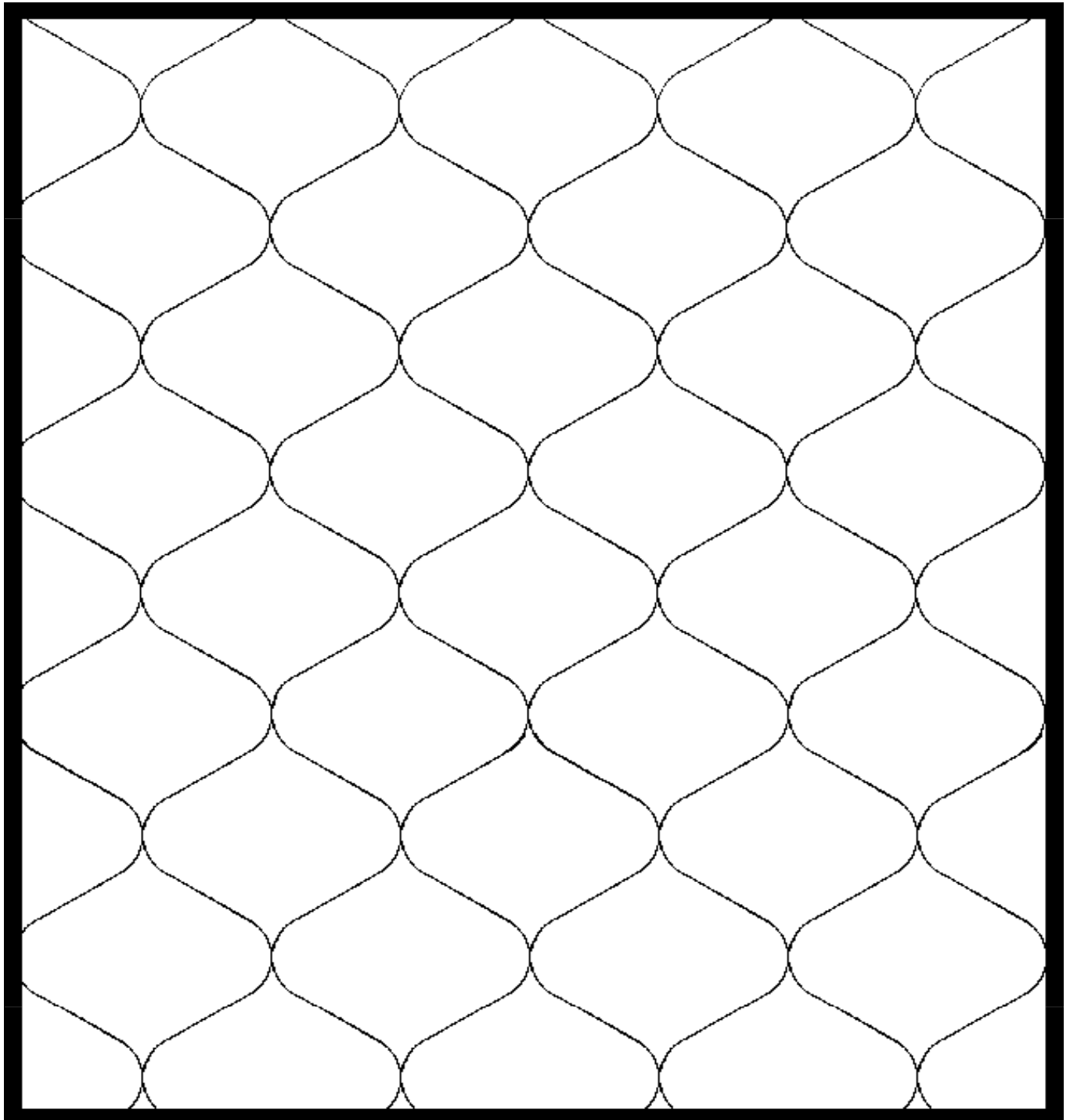
~ Design has two configuration

*Design#*

***340~***

***6" and 12"***

---



# *Class I Standard Patterns*

\* Design has multiple configuration

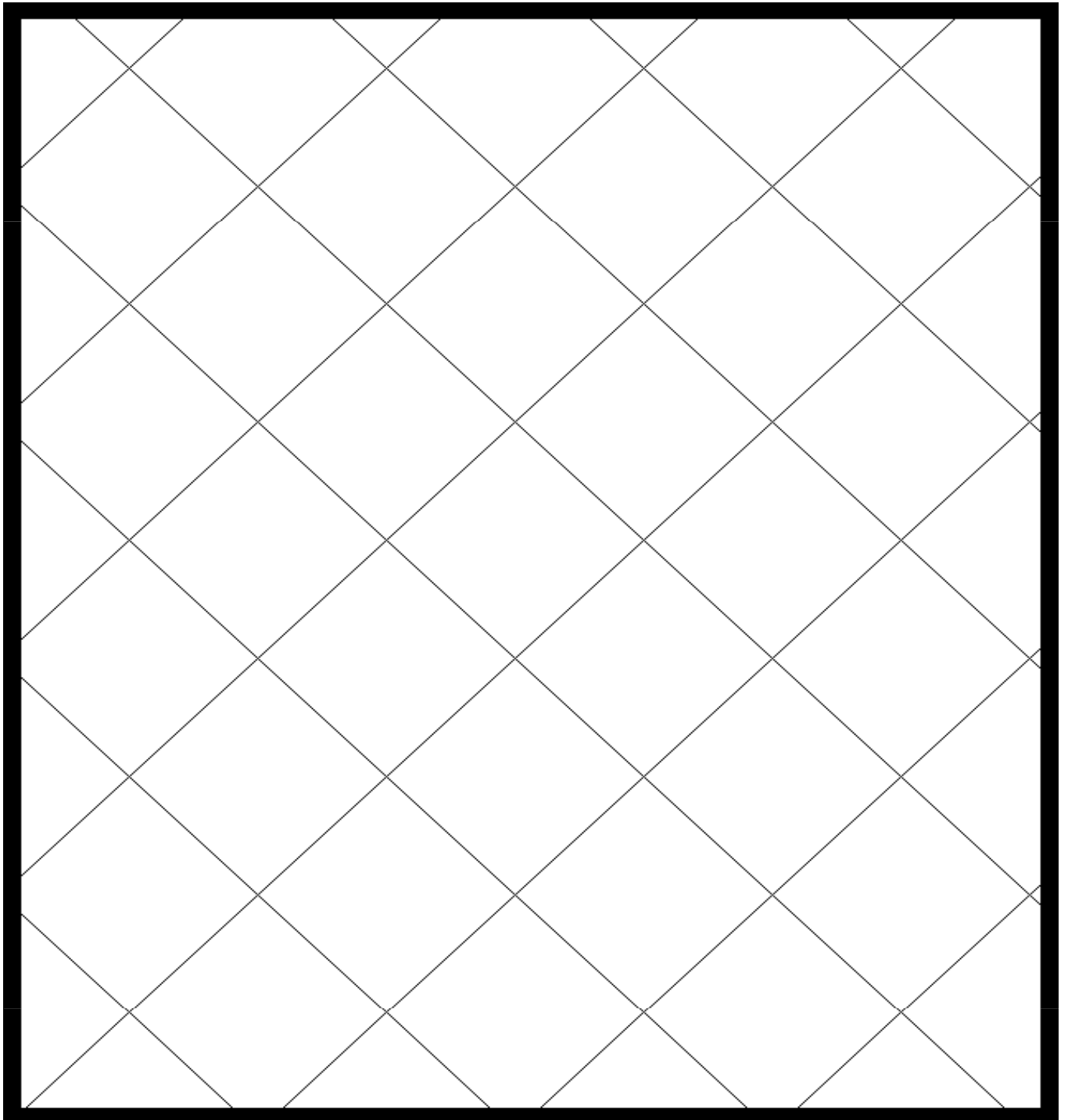
~ Design has two configuration

*Design#*

***514~***

***6" and 12"***

---



*Class I*  
*Standard Patterns*

\* Design has multiple configuration

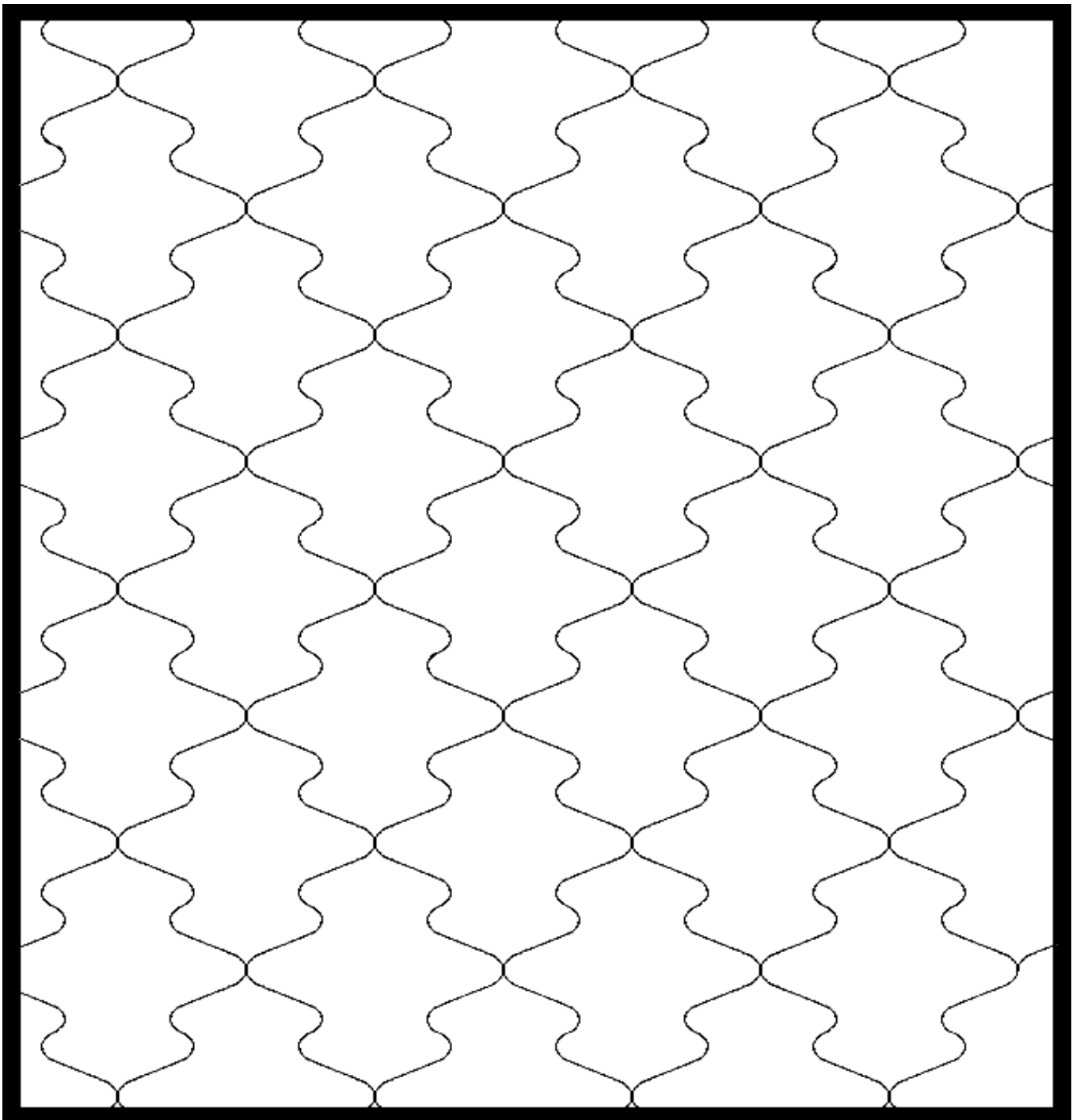
~ Design has two configuration

*Design#*

**749~**

**6" and 12"**

---



*Class I*  
*Standard Patterns*

\* Design has multiple configuration

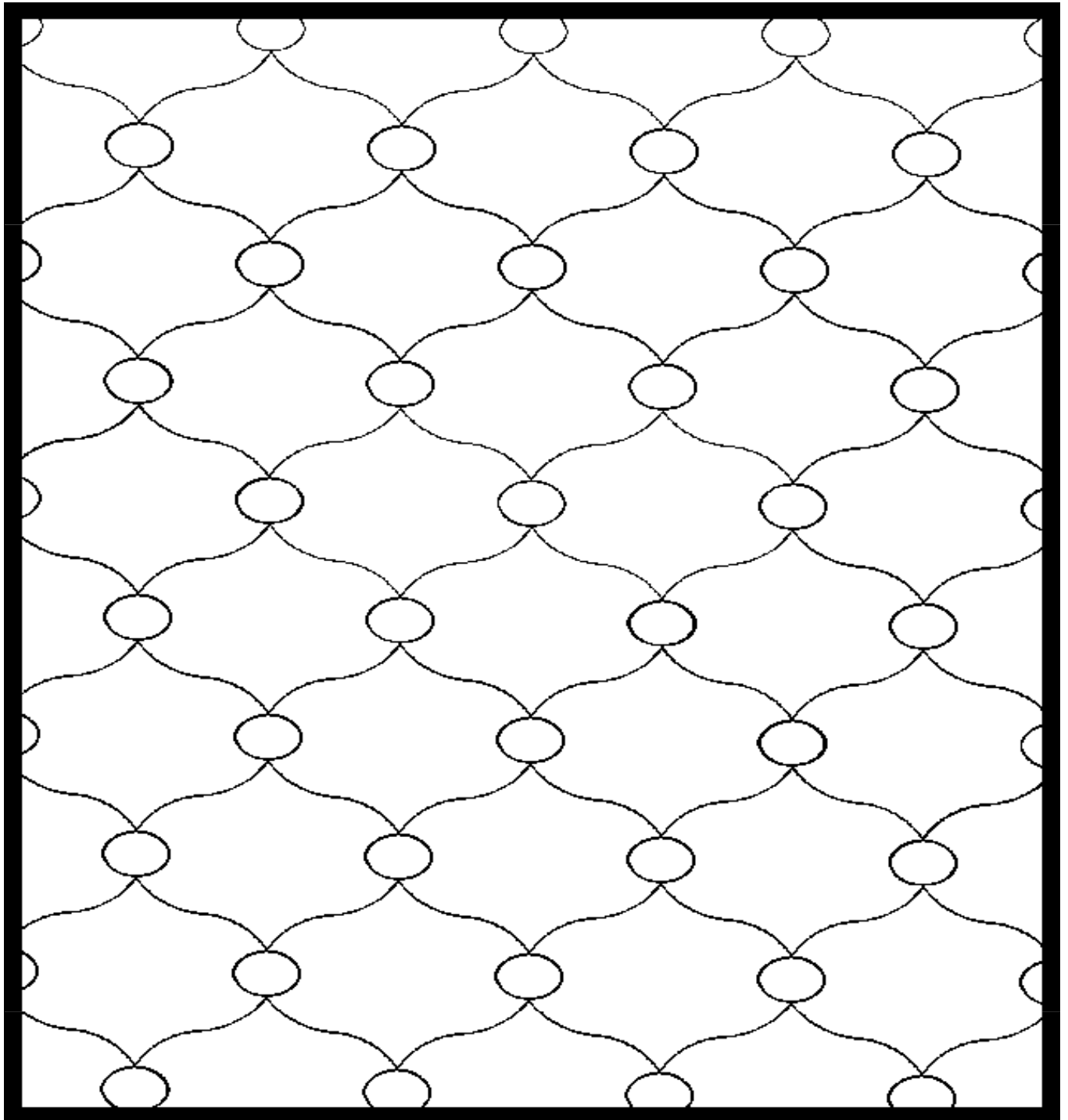
~ Design has two configuration

*Design#*

***756~***

***6" and 12"***

---





*Class I*  
*Standard Patterns*

\* Design has multiple configuration

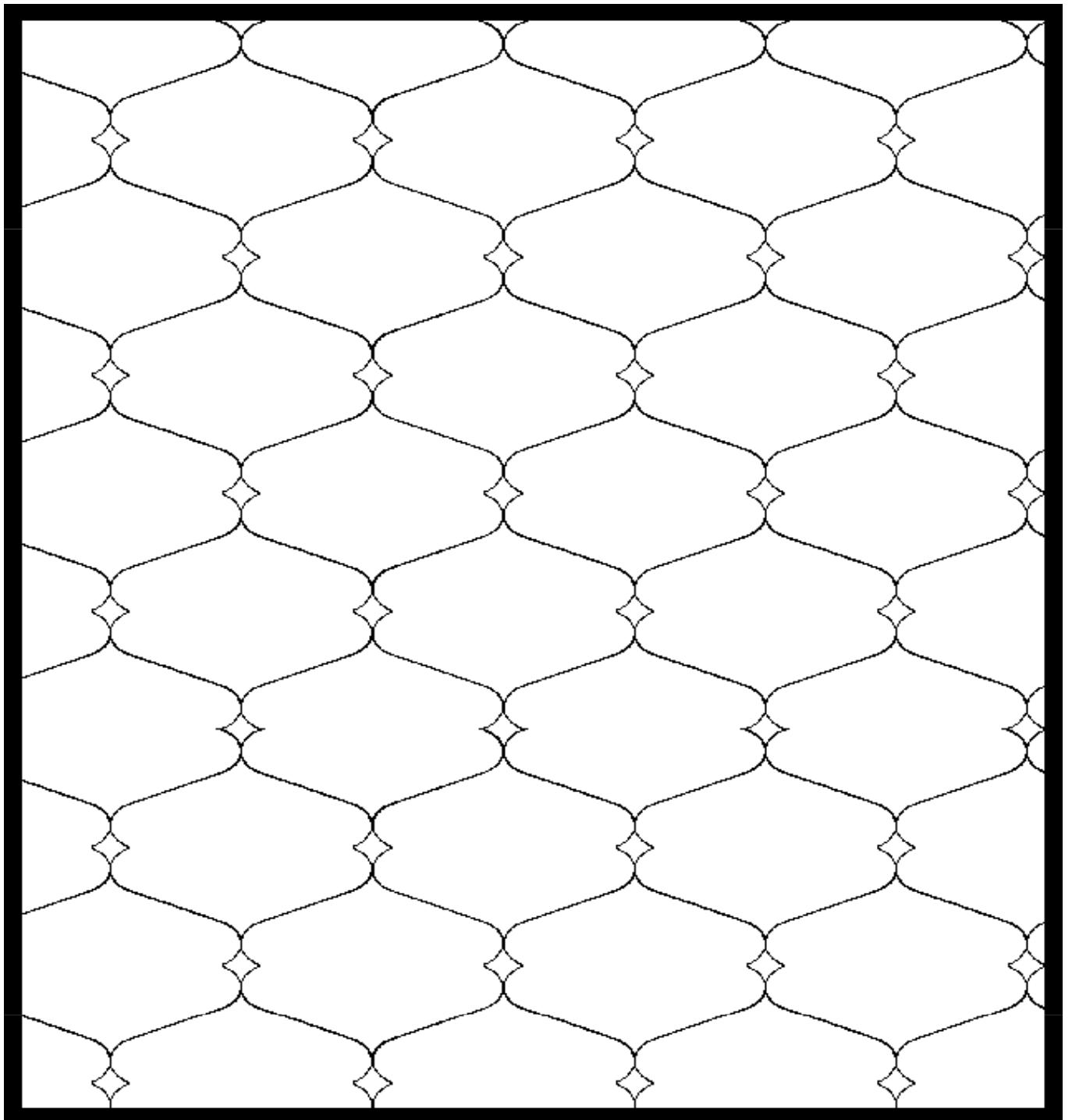
~ Design has two configuration

*Design#*

**772~**

**6" and 12"**

---



*Class I*  
*Standard Patterns*

\* Design has multiple configuration

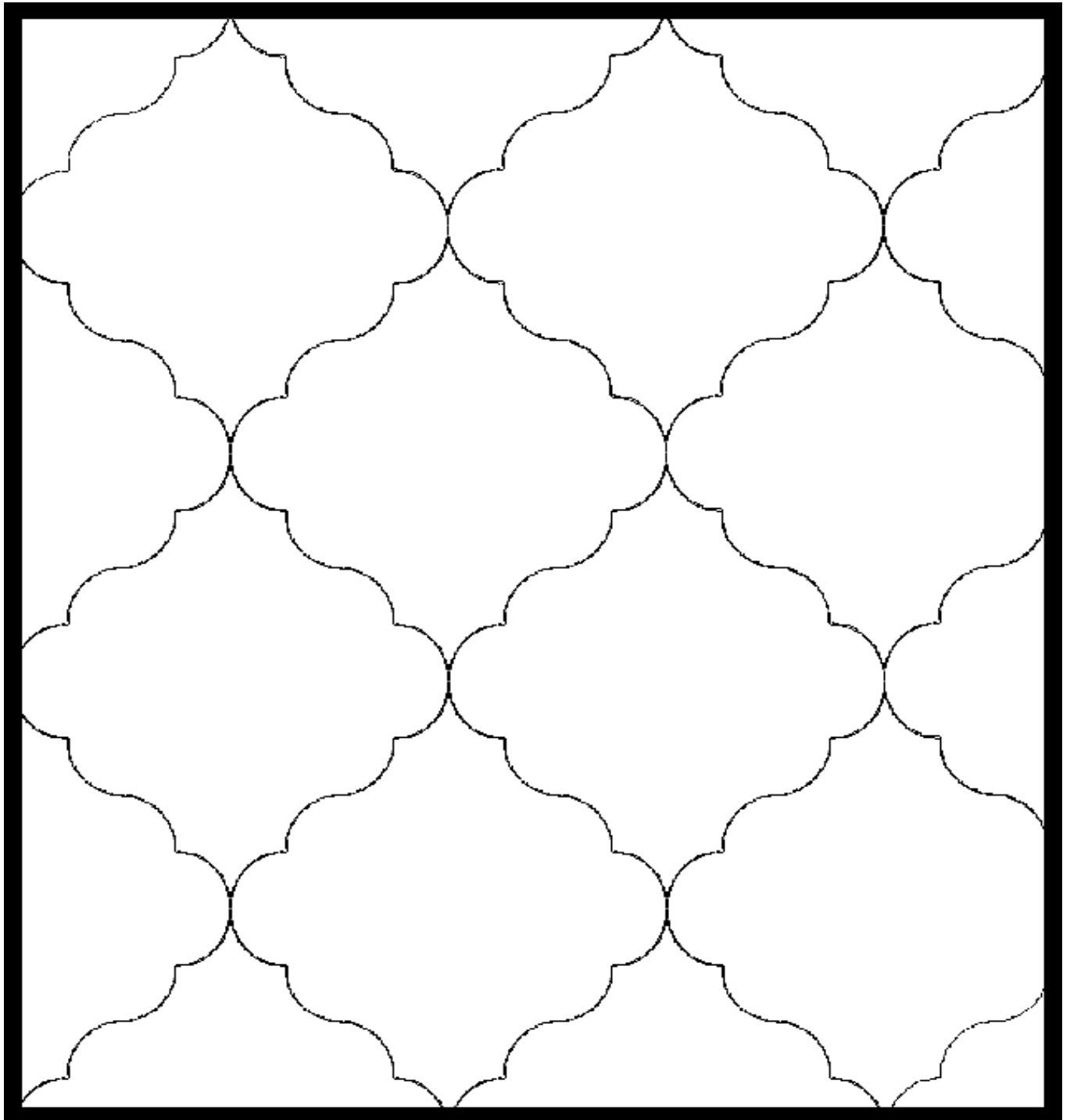
~ Design has two configuration

*Design#*

**787~**

**6" and 12"**

---



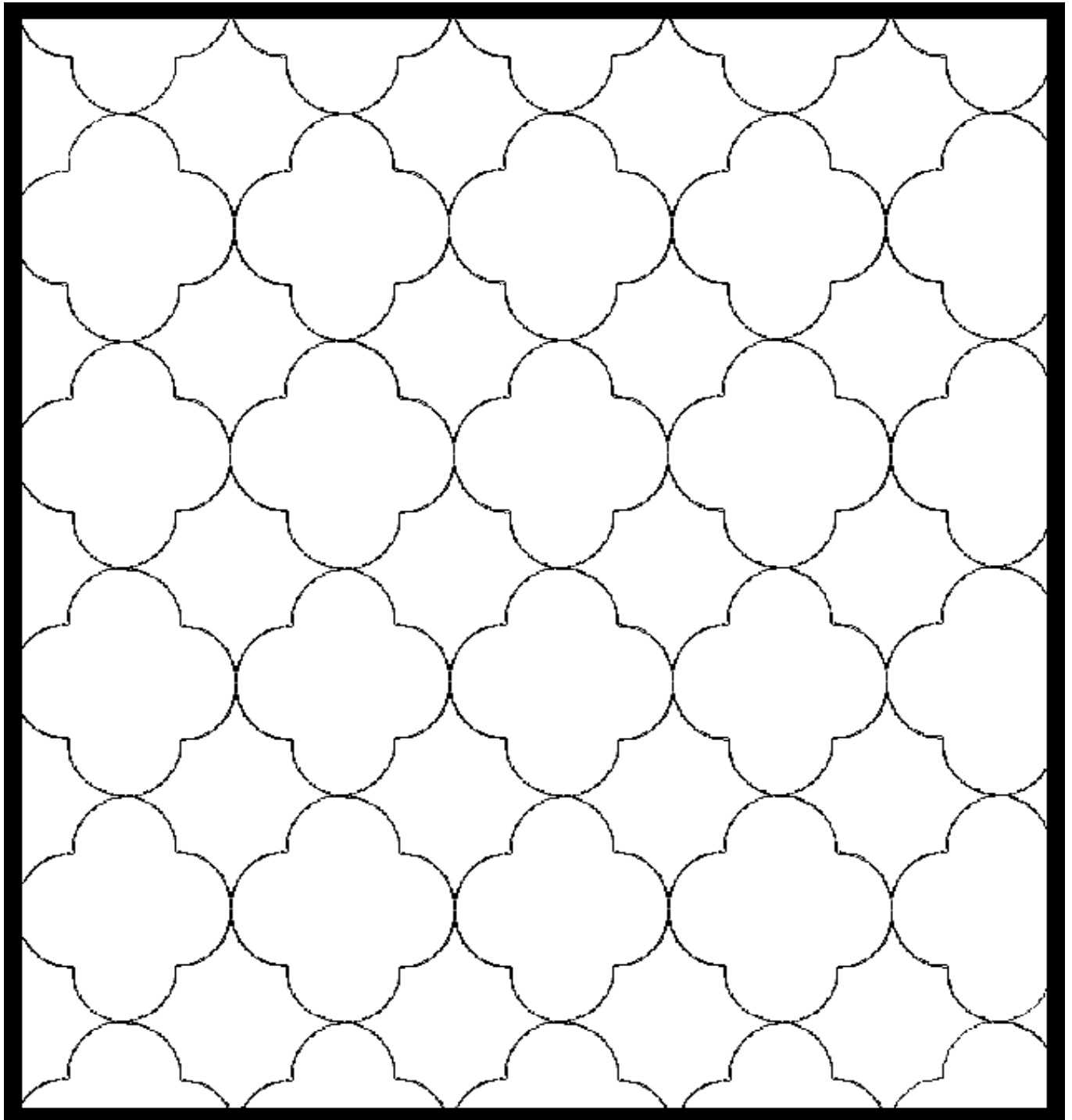
*Class I*  
*Standard Patterns*

\* Design has multiple configuration

~ Design has two configuration

*Design#*      **787-CIRCLE**

---



*Class I*  
*Standard Patterns*

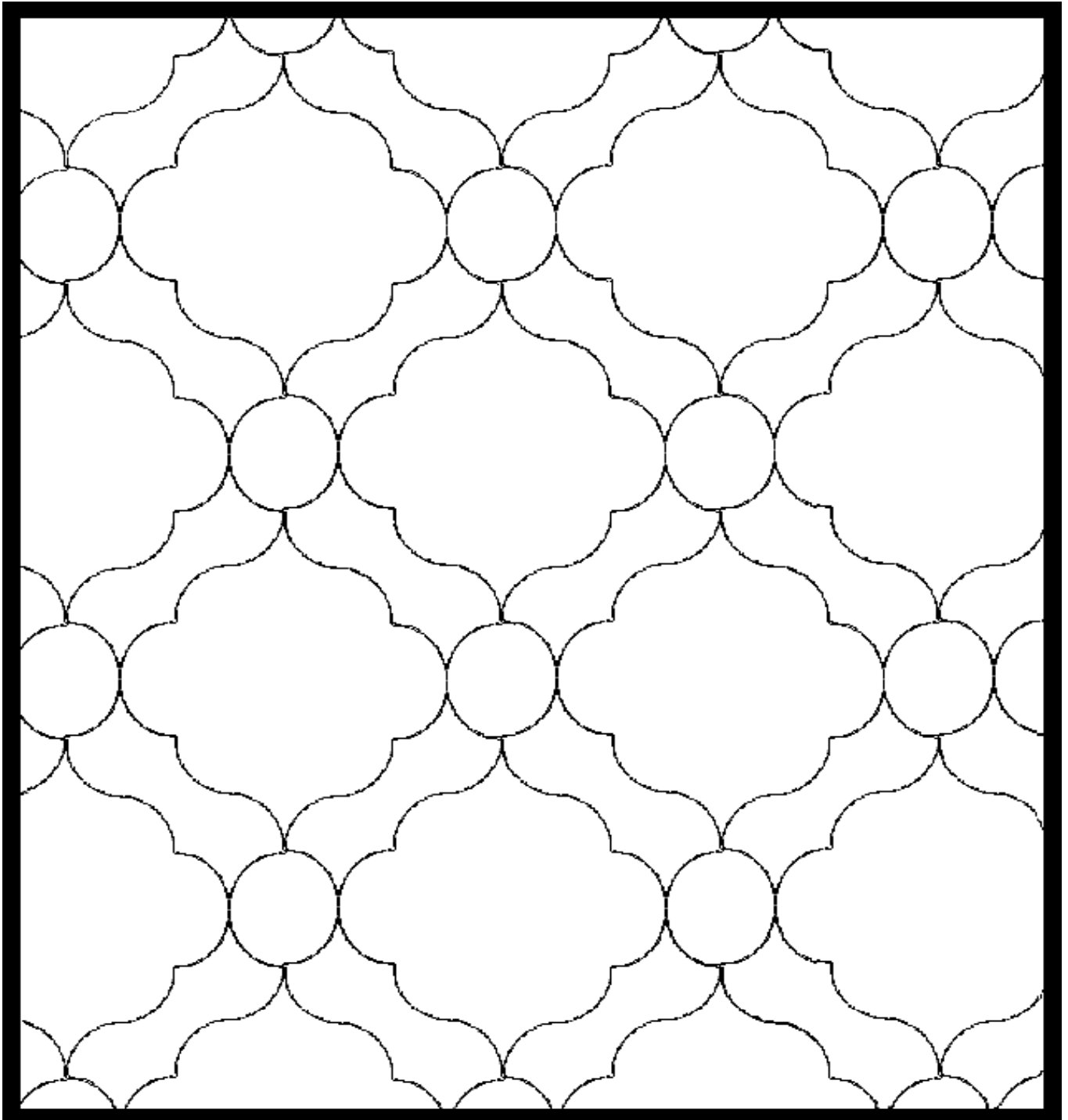
\* Design has multiple configuration

~ Design has two configuration

*Design#*

**787-D**

---



*Class I*  
*Standard Patterns*

\* Design has multiple configuration

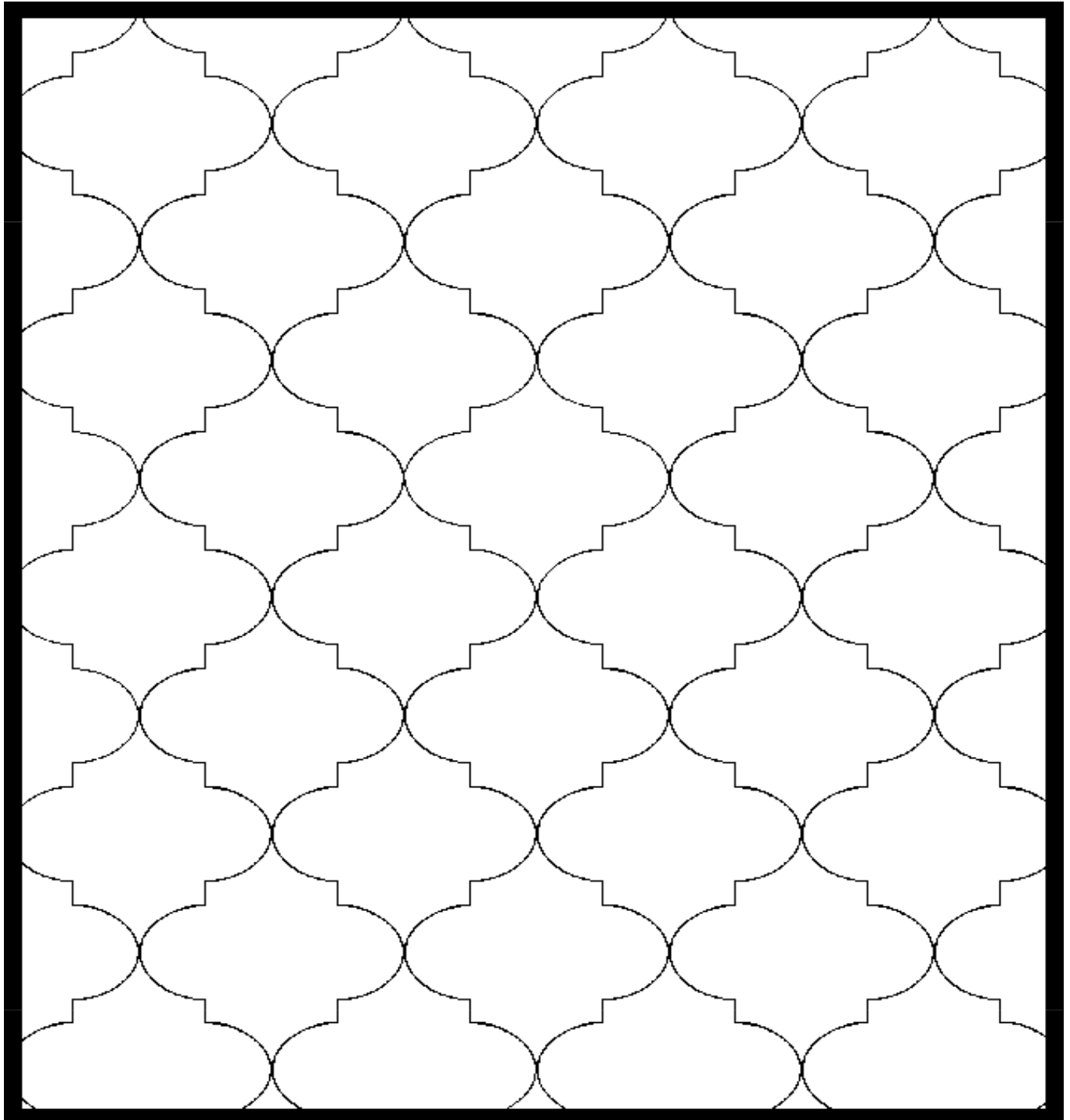
~ Design has two configuration

*Design#*

***800~***

***6" and 12"***

---

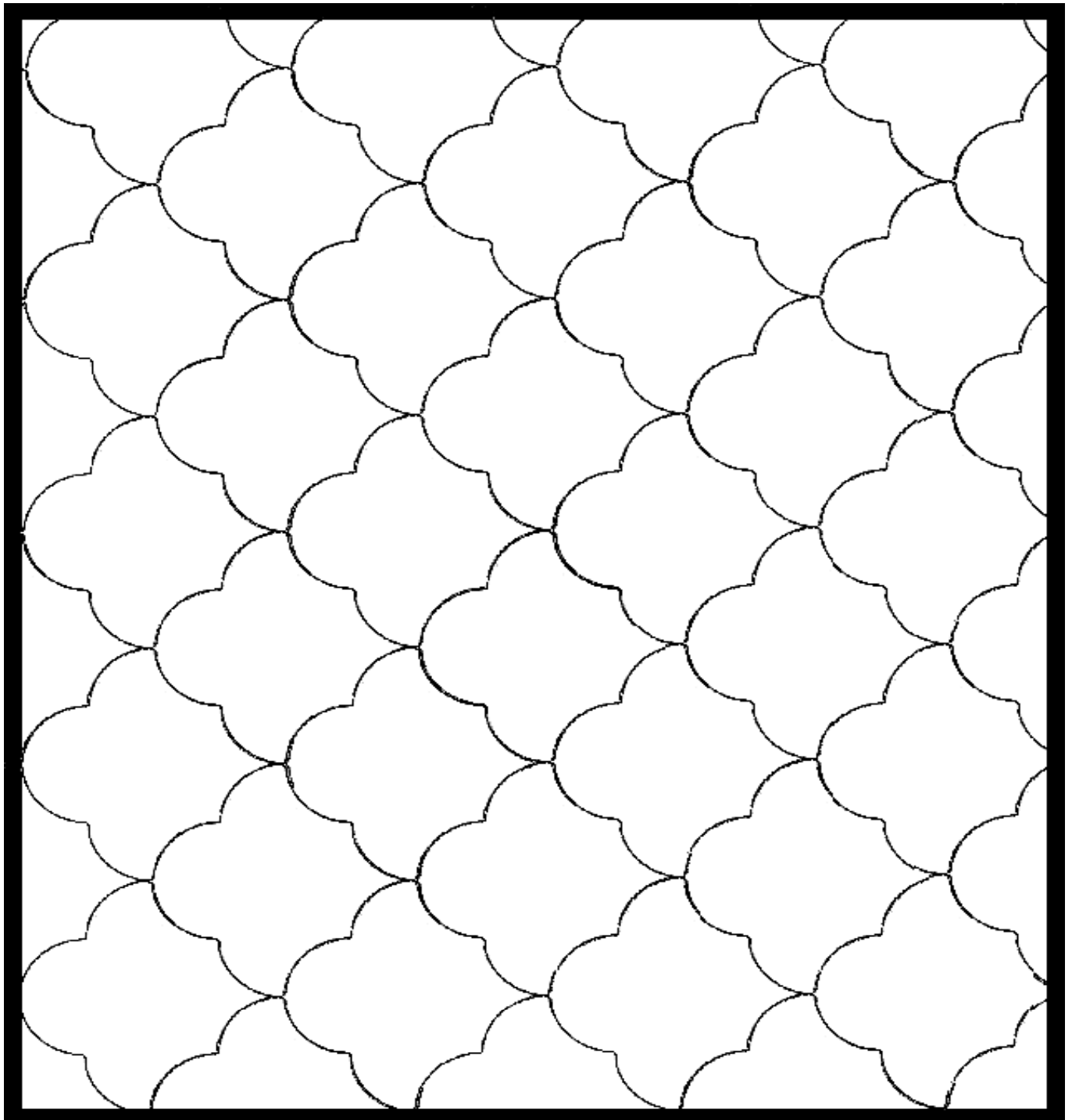


*Class I*  
*Standard Patterns*

\* Design has multiple configuration

~ Design has two configuration

*Design#*      **CLOUD-RR~**      **6" and 12"**



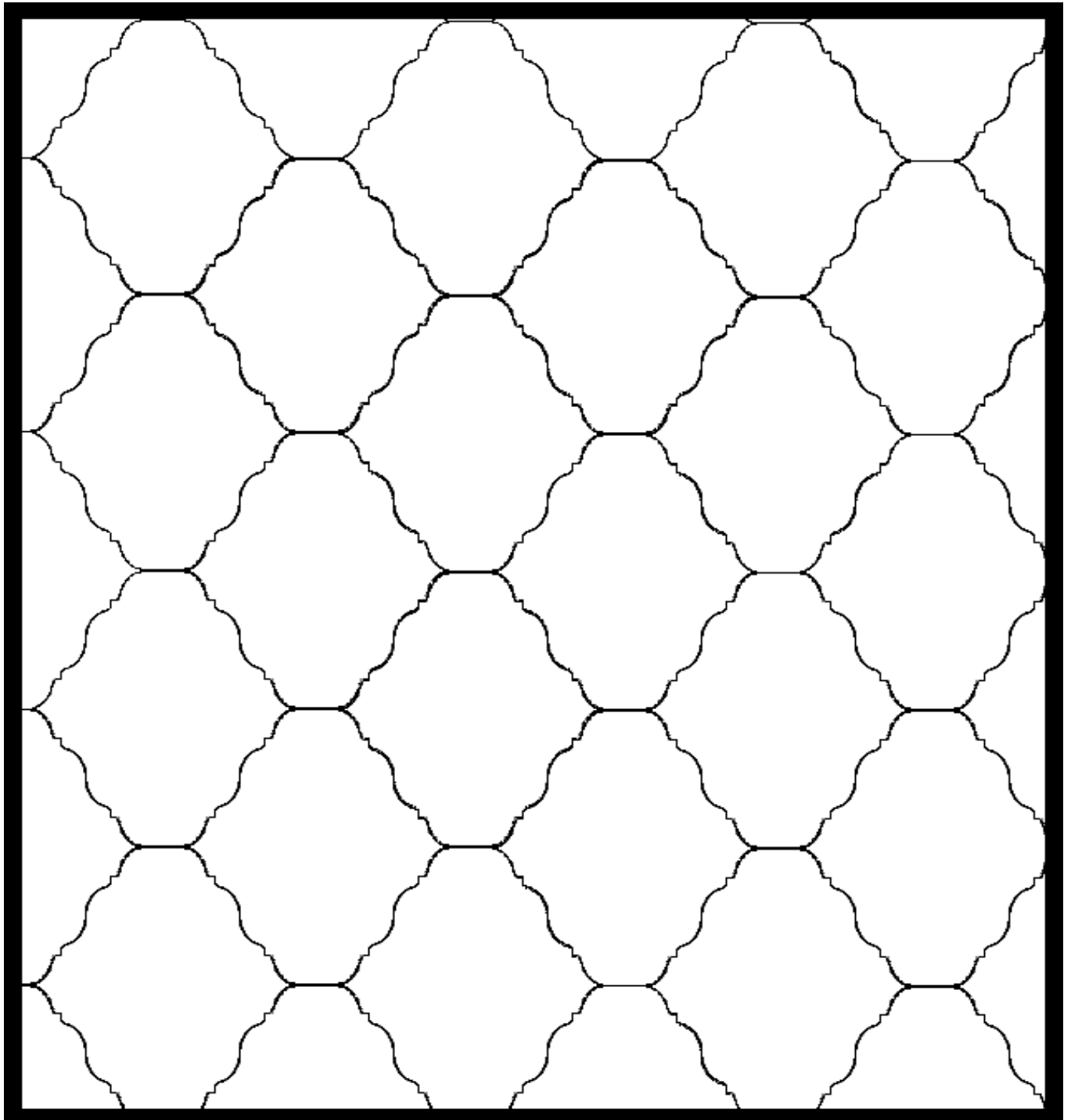
# *Class I*

## *Standard Patterns*

\* Design has multiple configuration

~ Design has two configuration

*Design#*      **GRIB11-RR~**      **6" and 12"**



*Class I*  
*Standard Patterns*

\* Design has multiple configuration

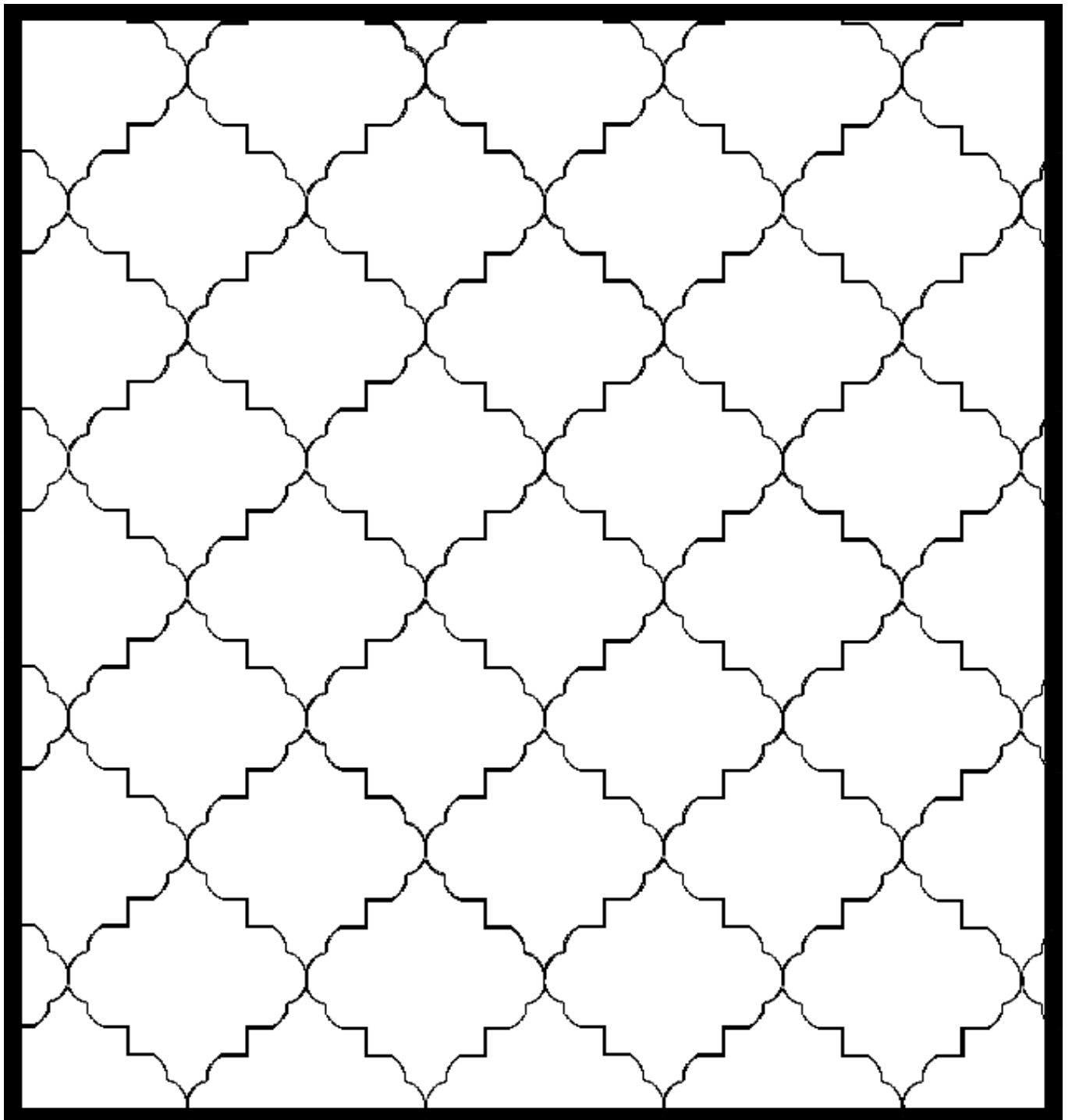
~ Design has two configuration

*Design#*

***J&B~***

***6" and 12"***

---



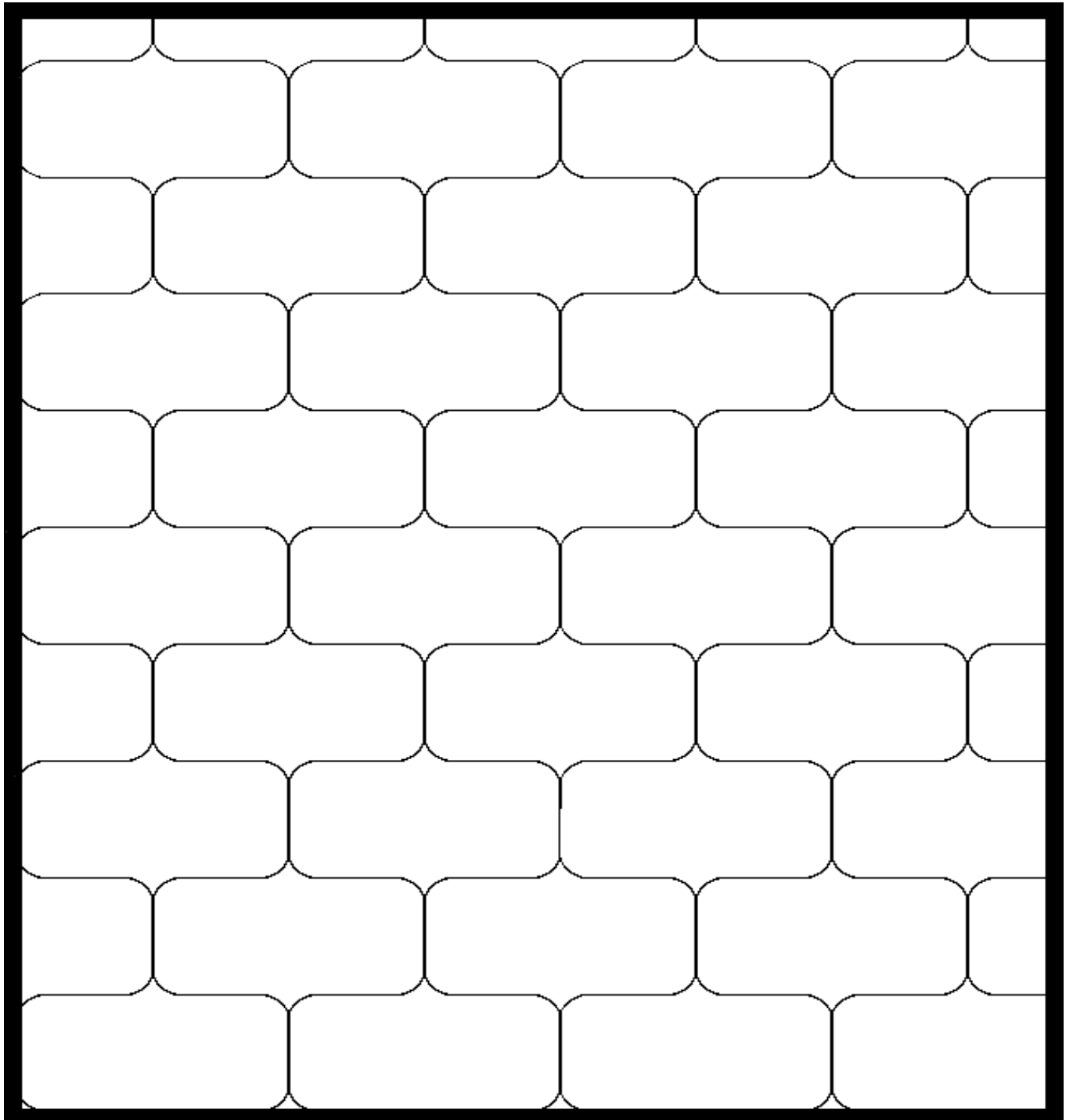


*Class I*  
*Standard Patterns*

\* Design has multiple configuration

~ Design has two configuration

*Design#*      ***NEWBRICK~***      ***6" and 12"***



*Class I*  
*Standard Patterns*

\* Design has multiple configuration

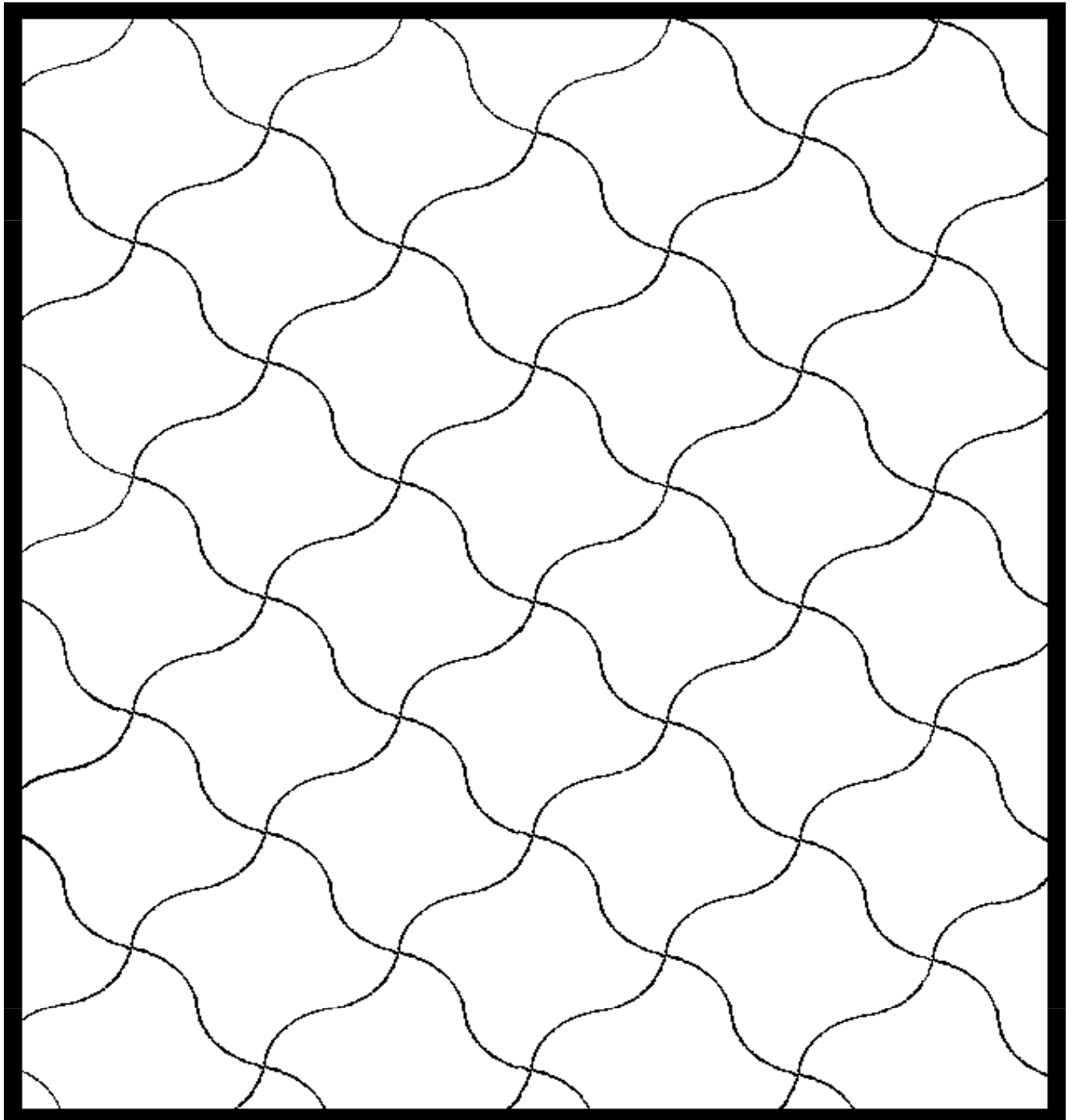
~ Design has two configuration

*Design#*

***RIBBON~***

***6" and 12"***

---



*Class I*  
*Standard Patterns*

\* Design has multiple configuration

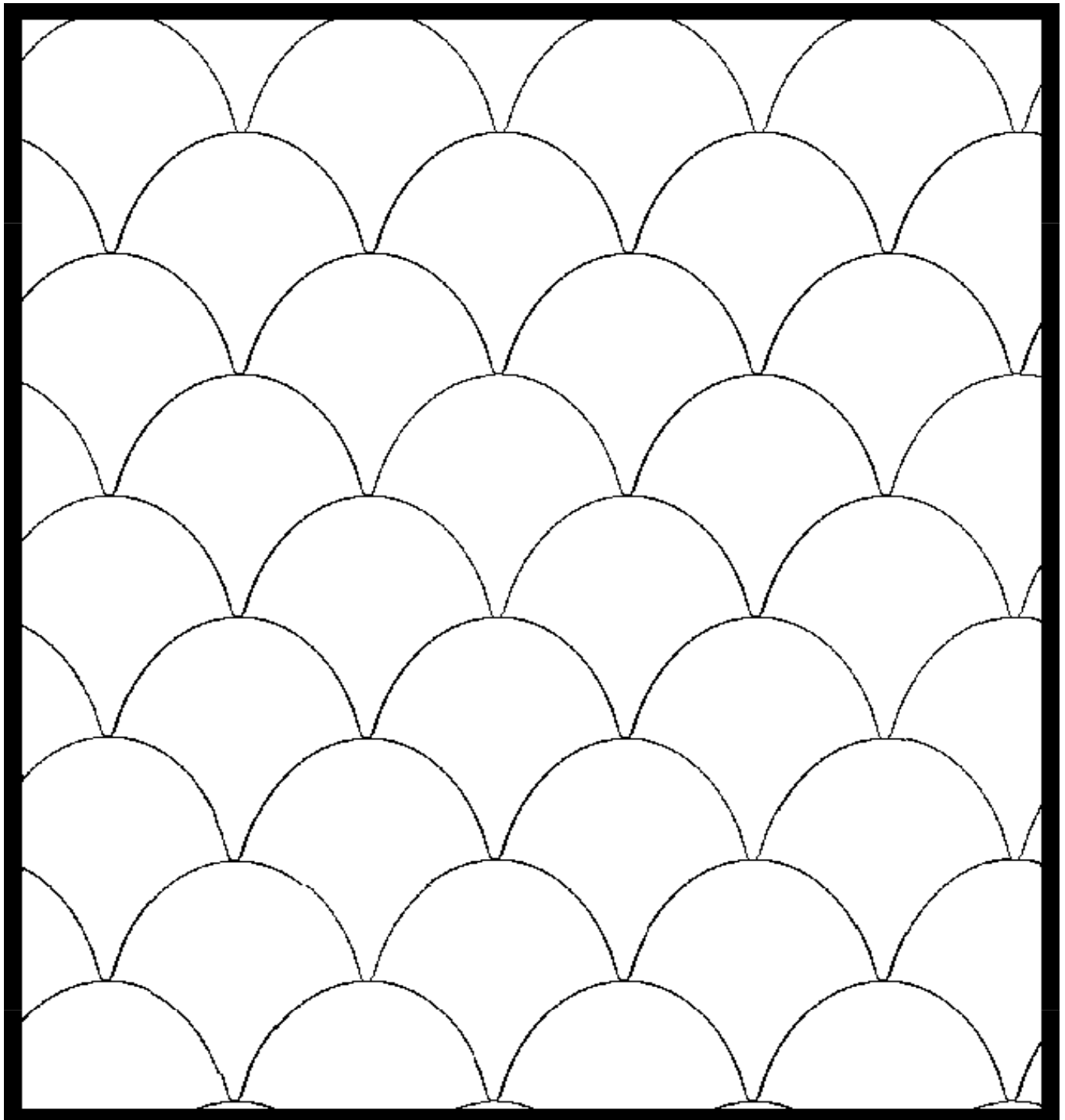
~ Design has two configuration

*Design#*

***SHELL~***

***6" and 12"***

---



# *Class I*

## *Standard Patterns*

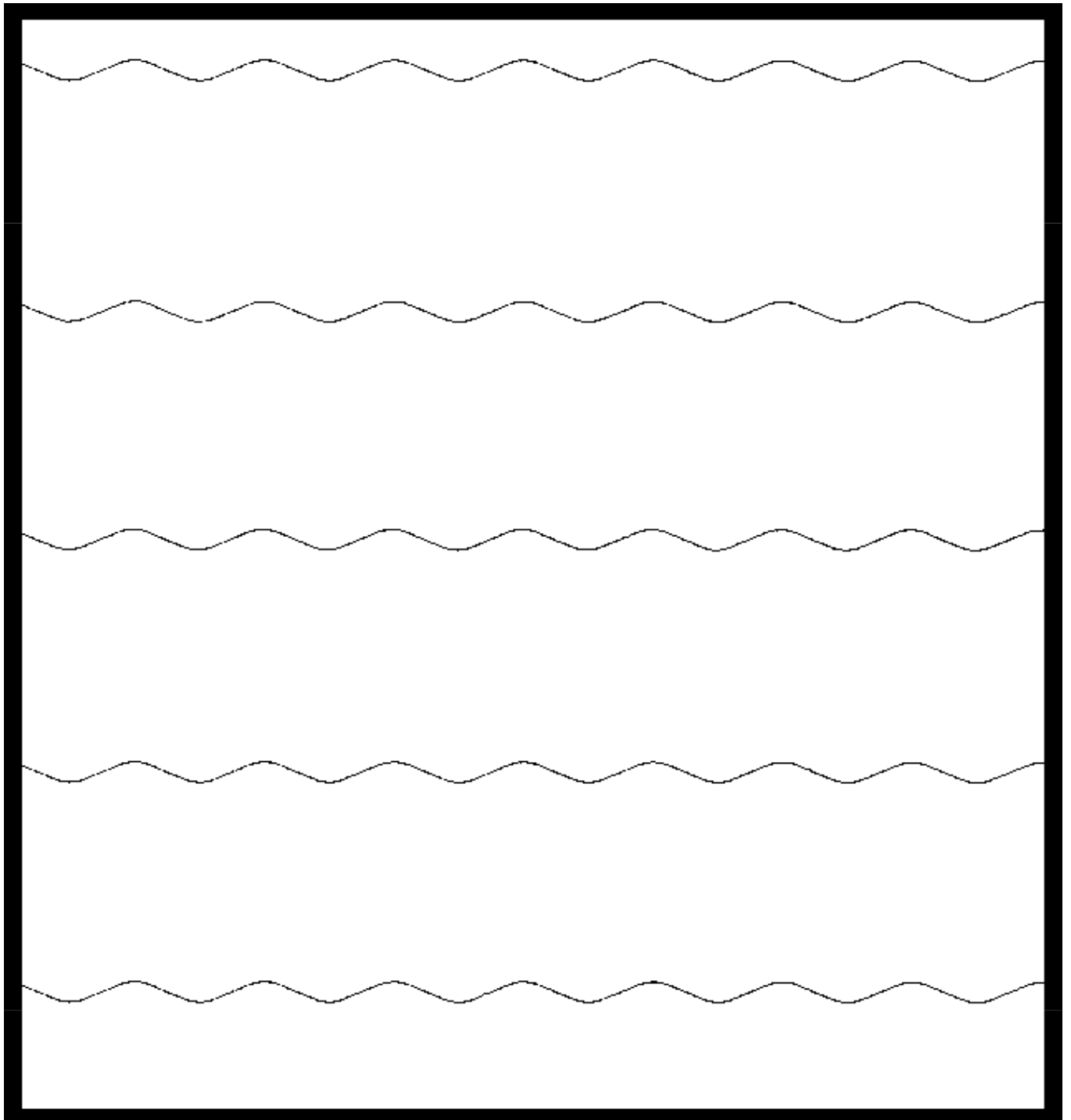
\* Design has multiple configuration

~ Design has two configuration

*Design#*

**WAVE-LT\***

---



# *Class I Standard Patterns*

\* Design has multiple configuration

~ Design has two configuration

*Design#*

***WL7~***

***6" and 12"***

---

