

Alpha **Mi**

Alpha Survey USV

Light and potable | Highly integrated | Extensive and high-precision surveying



Alpha Mi USV for surveying

Alpha Mi is exclusively designed for single-person measuring work of lakes and rivers. Trimaran design ensures stable sailing and is used in conjunction with dual pump jet thruster, RTK, single beam, and HD image. Intelligent ship control are integrated for more convenient and high precision underwater measurement.



Easy Work For Even One Person

The size of an alpha Mi is only 900×500×340mm, the whole set of which can be carried by one single person without difficulty. The hull can be easily put into a car trunk. A single worker is able to quickly conduct his hydrographic survey as soon as the battery and the antennas are installed.





Quick Preparation

Configure or pack up in 1 minute.



Long Working Time

Maximum working time 5h. 2 batteries enough for 1 day job.



Detachable Propeller

Dual pump jet detachable propeller, easy to maintain. Maximum speed at 6 m/s, well perform on torrent.



4G For Remote Control

4G network brings unlimited control distance.



Intelligent Obstacle Avoidance (Optional)

40-meter heading radar sensing, decelerating within 10 meters to avoid potential dangers in real time.



Single Beam Bathymetry

Built-in high-sensitivity depth echo sounder, sounding 0.2 meters the shallowest.



Protection

Streamline slope design at the back of the boat with blade-like filter and pump protect the vehicle from being entangled by aquatic plants.

Detachable Propeller

When the propeller is entangled with fishing line and other debris, it does not need to be returned to the factory for repair. The operator can use the supporting tools to quickly disassemble it on site, eliminate the problem, and then continue working.



Multi-functional Controller



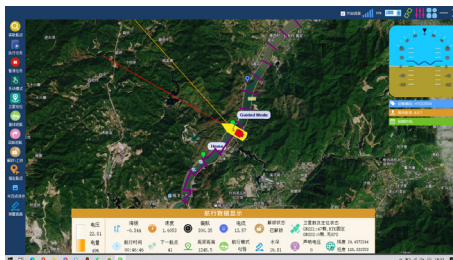
- System:** Android+Qualcomm octa-core
- Transmission:** Controller+Data+Image
- Screen:** 5.5 inches high resolution (1920*1080)
- Battery:** 10000mAh
- Working time:** 10 hours
- weight:** 650g
- Software:** All-in-one Software

All-in-One Ship Control Software

The alpha software system is a software solution used for route planning, parameter setting, hull control, data display, status display and data export, etc. Customized maps and satellite image maps can be imported or downloaded when the network is working. The software system is able to automatically generate routes, execute navigation tasks, continue navigation task after breakout and finally return to the place of departure.



Storage Capacity Measurement



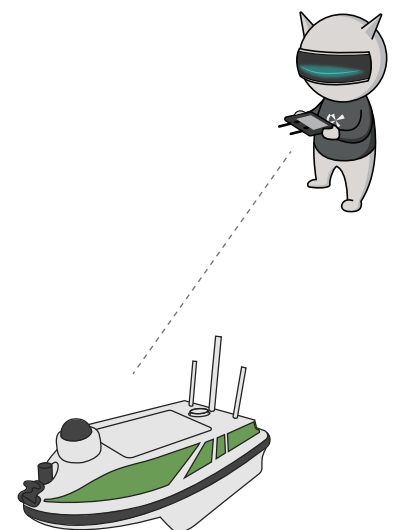
Section Measurement



Dock Channel Survey



River Topography Survey



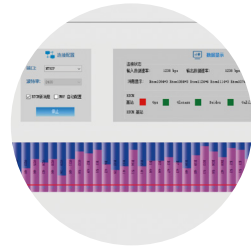
Work Flow



1. Work Flow



2. Connect the USV



3. Configure RTK



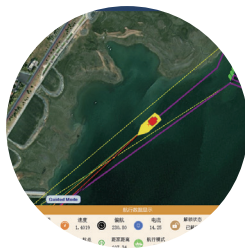
6. Guide Navigation



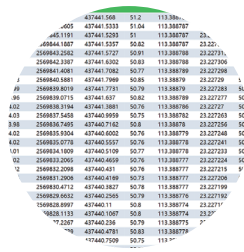
5. Perform Task



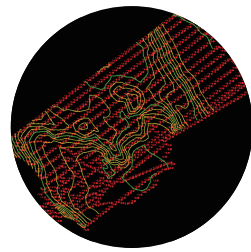
4. Route Planning



7. One Key Return Home



8. Data Export



9. Data Transmit

Measurement Cases (Working Environments)



Yellow River



Han River



Pearl River



Songhua River



Lake



Fishpond



Inshore Waters



Dock

Professional Set



Hull	×1
Propeller	×2
Intelligent hull control	×1
Built-in RTK	×1
Built-in HD camera	×1
Built-in single-beam	×1
Dual rocker android remote controller	×1
High performance water-proof battery	×1
Battery Charger	×1
Communication antenna	×2
GNSS antenna	×2
Network antenna	×1
Radio antenna	×1
Carrying Case	×1
Life jacket	×1
Tool kit	×1
Instruction manual	×1

Technical Specification

Physical	Dimension	900×500×340mm
	Material	Polymer material
	Design	M-type trimaran
	Weight	16kg
	Max Payload	20kg
Echo sounder	Anti Wind&Wave	Level 4
	Range	0.2m-120m
	Accuracy	1cm±0.1%h(h is the meters of water depth)
	Resolution	1cm
Obstacle Avoidance	Beam angle	7.5°±0.5°
	Video	1080HD
Power	Millimeter Wave Radar	Optional
	Thruster	DC pumpjet thruster
	Propeller	3-piece aviation aluminum alloy paddle
	Protection	Double protection from aquatic plants
	Speed	Cruise 2 m/s, maximum 6 m/s
	Battery	29.6V 888Wh
Position And Orientation	Working time	4-5h(1.5m/s), customized 8-10h
	Battery Type	Detachable
	Satellite	GPS: L1C/A, L1C, L1P, L2C, L2P, L5、 BDS: B1I, B2I, B3I, B1C, B2a、 GLONASS: G1, G2, G3、 Galileo: E1, E5a, E5b、 QZSS: L1C/A, L1C, L2C, L5
	RTK	Built-in GNSS receiver
	RTK Accuracy	Horizontal: ± (8+1×10 ⁻⁶ D) mm, Vertical: ± (15+1×10 ⁻⁶ D) mm
	Channel	432
	Orientation	Three-dimensional electronic compass Dual GNSS antenna
Communication	RTK	Built-in radio and 4G network
	Video	5.8GHz
	Remote	5.8GHz
	Control Distance	Unlimited by network, 2km by radio (Typical Environment)

*The above technical parameters are for your reference. The company reserves the right to change the design and planning of the product based on the actual product.

Geospace NZ Ltd
29G Peters Way
Silverdale
Auckland 0932
sales@geospace.co.nz
0212135518