

ELECTRIC STRIKE & BOLT LOCK

Electric Control Lock, Door Holder, Door Closer

Electric Strike, Fail Safe/ Secure



- 150x39.5x31mm
- Wooden or Metal Frames Door
- Fail Safe (Power to Lock) / Fail Secure (Power to Unlock)
- Working Voltage & Current: DC12V/ 250mA

MODEL #	LOCK TYPE
513-STR150	Fail Secure
513-STR151	Fail Safe

Electric Strike, Fail Safe/ Secure



- 250x25x31.5mm
- Wooden or Metal Frames Door
- Fail Safe (Power to Lock) / Fail Secure (Power to Unlock)
- Working Voltage & Current: DC12V/ 250mA

MODEL #	LOCK TYPE
513-STR250	Fail Secure
513-STR251	Fail Safe

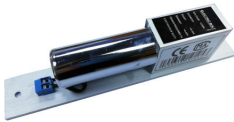
Electric Strike for Glass Door



- 150x28x30mm
- For 12-15mm Glass Door
- Fail Safe (Power to Lock)
- Working Voltage & Current: DC12V/ 240mA

MODEL #	LOCK TYPE
513-STR161	Fail Safe

Electric Bolt- Lock, Fail Safe



- 205x34x43mm
- Aluminum Faceplate, 2 Wires
- Working Voltage & Current: DC12V/ 450mA

MODEL #	LOCK TYPE	DELAY
513-200	Fail Safe	-

Electric Bolt- Lock, Fail Safe



- 205x34x43mm
- Magnetic Sensor & Time Delay
- Aluminum Faceplate, 5 Wires
- Working Voltage & Current: DC12V/ 900 (200)mA

MODEL #	LOCK TYPE	DELAY
513-200SD	Fail Safe	0,2,5 sec

Electric Control Lock



- Fail Secure (Power to Unlock)
- Double Cylinder+Button Open
- DC12V, 1000mA
- Fit Left/ Right installation

MODEL #	DOOR OPEN
518-1073L	LEFT
518-1073R	RIGHT

Electric Control Lock



- 154x117x63mm
- Fail Secure (Power to Unlock)
- Double Cylinder+Button Open
- DC12V, 1300mA
- Fit Left/ Right installation

MODEL #	DOOR OPEN
518-223L	LEFT
518-223R	RIGHT

Magnetic Door Holder



- 65x65x117mm (Lock)
- 65x65x50mm (Sucker)
- 60kg Wall/ Ground Mount
- Sucker Adjustable Angle: 45°
- Working Voltage: DC12V/ 24V

MODEL #	MOUNTING
514-828G	Ground Mount
514-828W	Wall Mount

Door Closer



- Inner diameter: 8/10mm
- Length: 400mm~580mm Max.
- Material
Tube: Stainless Steel
Mounting: Plastic/ Zinc Alloy

MODEL #	DIMENSION/ MATL
ADX-201	Dia: 8x400mm Plastic
ADX-301	Dia: 8x400mm Zinc
ADX-401	Dia: 10x580mm Zinc