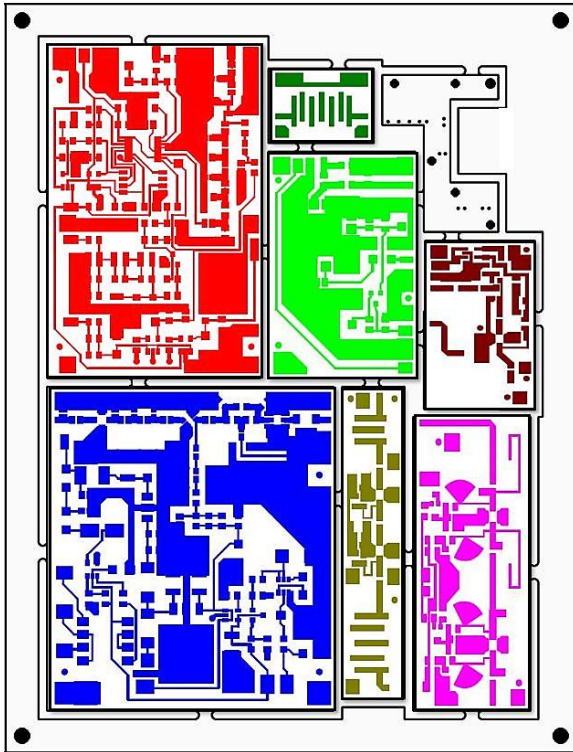


Reduce assembly setups *and* Slash stencil purchases using **PALLET CONSOLIDATION**



Above: Just 1 stencil pastes them all!

Why setup to paste, place and reflow multiple time when you can do it all just once? *Let us show you how to cut cost, save time and champion high mix/low volume assembling with a FREE Pallet Consolidation layout consultation.*

Contact Bob Lazzara for all the details at:
BobL@Circuit-Connect.com

Copyright 2019 Circuit Connect, Inc.

CIRCUIT CONNECT, INC.
4 State Street, Nashua NH 03063

Circuit Connect

READY-TO-ASSEMBLE | USA MADE
PRINTED CIRCUIT BOARDS

= BUY AMERICAN =



ITAR REGISTERED SINCE 2009



JENNIFER BURKE

ACCOUNT MANAGER

TEL: (603) 318-3082

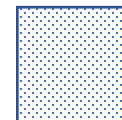
FAX: (603) 880-7975

Email: JenniferB@Circuit-Connect.com

Web: www.Circuit-Connect.com

CIRCUIT CONNECT, INC.

4 State Street, Nashua NH 03063



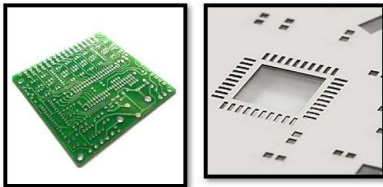
Circuit Connect is Your Source for...

REVERSE ENGINEERING

Need bare boards but don't have data files?
We can help ... with *Scan-Connect*.

Scan-Connect is our reverse-engineering service that yields precise, fully editable CAM data from printed circuit boards, printed circuit assemblies, phototools (film), solder paste stencils, hardcopy drawings and non-CAM digital image files.

Scan-Connect uses these...



...to output electronic tooling data in industry standard formats:

- Fully editable Gerber 274X layers
- CNC Drill
- CNC Rout
- BMP, TIFF and JPG
- DXF
- Centroid Data

For more information or a free quote contact:

Bob Lazzara BobL@Circuit-Connect.com

***"We not only make PCBs from Gerbers,
we make Gerbers from PCBs!"***

SPOTLIGHT ON NEW & IMPROVED:

=Phoenix AOI=



Our *Phoenix AOI* is CIMS' latest generation of AOI systems, designed to support HDI and multilayer PCBs with scan resolution down to 30 µm line/space width.

Equipped with state-of-the-art image acquisition capabilities, the *Phoenix* is renowned for exceptional detection.

Bells & Whistles We Had to Have:

- Fi – final inspection for finished boards
- +2DM metrology – panel dimensions measurement
- +2CD metrology – 2D measurement of circuit elements

<https://www.cims.com/phoenix-hdi/>

PRE-PRODUCTION ENGINEERING

- ✓ Factory-based Engineering Staff
- ✓ Genesis CAM and Design-Rule Check
- ✓ Reverse Engineering Services

For more information and assistance contact:

MARTIN MUSCELLI

Pre-Production Engineering

- Tel: 603.318.3077
- eMail: MMuscelli@Circuit-Connect.com

CREDENTIALS

AMERICAN OWNED | EST. 1990

EPA: Acknowledged *Design for the Environment* Partner



IPC: Certified IPC-A-600 Staff Trainer



ISO 9001-2015 Quality System



ISO 14001:2015 Environmental Sys.



ITAR: Registered since 2009



JCP:  UNITED STATES/CANADA
JOINT CERTIFICATION PROGRAM

SAM: System for Award Management 

SMTA Member



UL-Listed, file # E115009



See our Credentials page at
www.Circuit-Connect.com