



CODA: Coastal Ocean Dynamics in the Arctic

Jim Thomson¹, Nirnimesh Kumar¹, Erick Rogers²

¹University of Washington, ²Naval Research Lab



<http://www.apl.uw.edu/CODA>

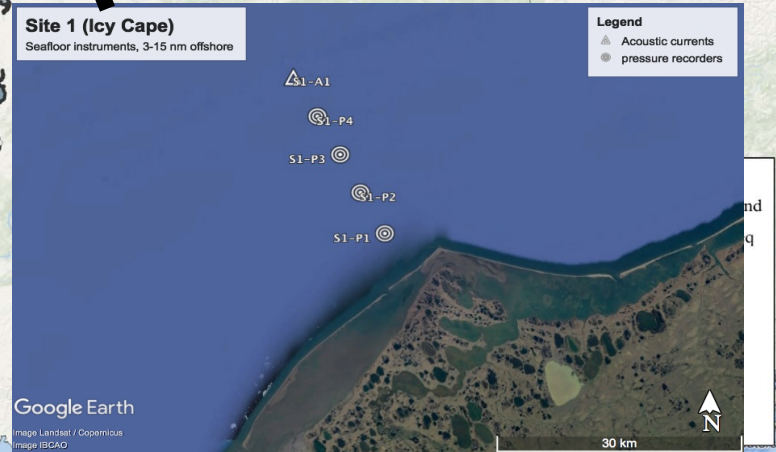
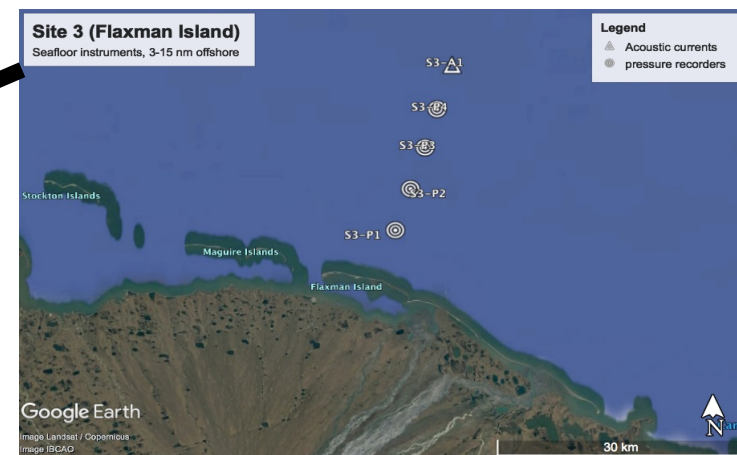
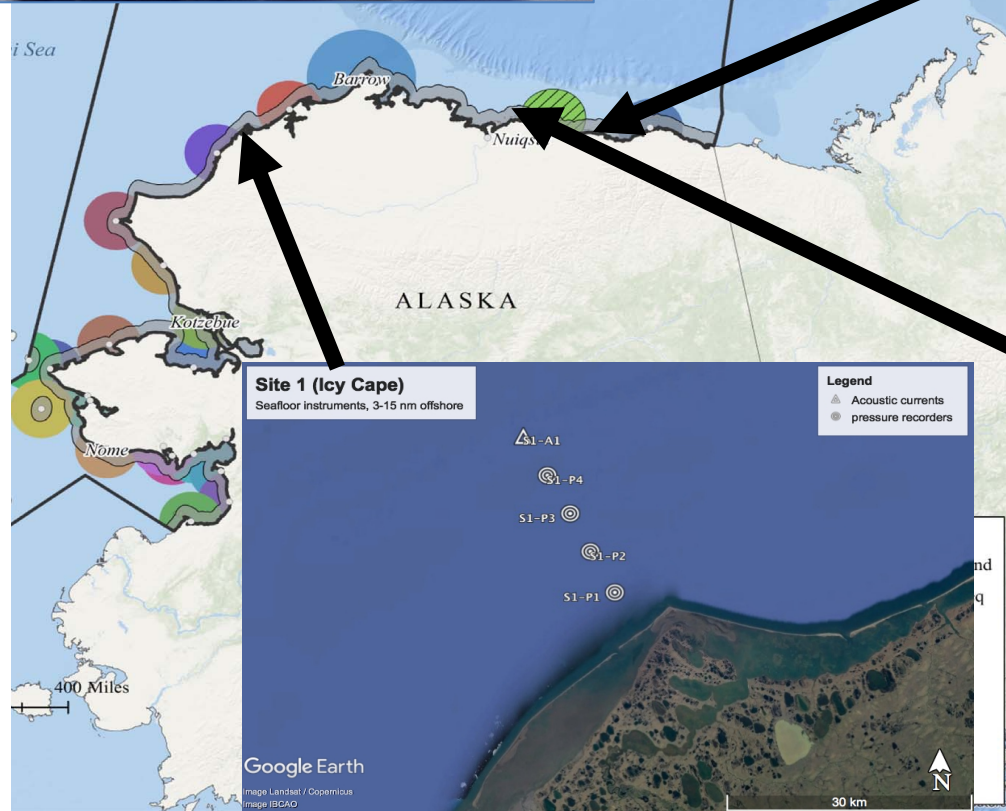


CODA field program

3 focus sites, all gear > 3 nm offshore



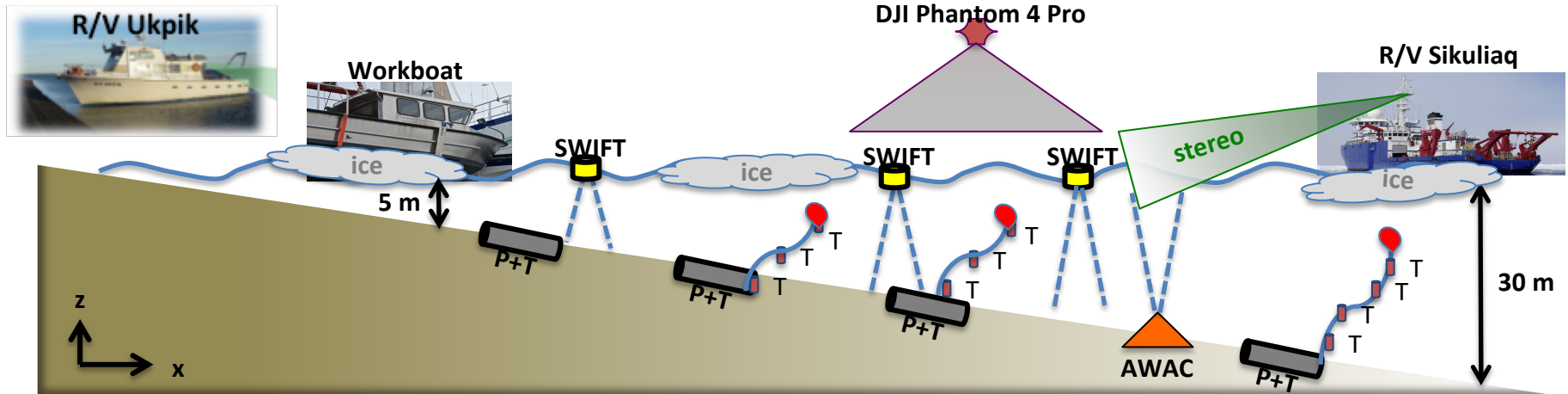
- 1) Icy Cape
- 2) Jones Island
- 3) Flaxman Island





CODA field program

3 focus sites, all gear > 3 nm offshore



Instrumentation	Duration	Purpose
Temp and pressure recorders	1 year (moored)	Waves and water temp
AWAC on tripod	1 year (moored)	Waves and currents
Satellite images	1 year	Ice conditions and shoreline position
SWIFT buoys	days (opportunistic)	Waves, winds, currents, dissipation
Shipboard stereo video	days (opportunistic)	Wave-ice interactions
Shipboard met station	days (opportunistic)	Wind stress and heat flux
Shipboard ADCP and CTD	days (opportunistic)	Currents and heat transport
Shipboard multibeam	days (opportunistic)	Bathymetry survey
UAS (drone)	days (opportunistic)	Ice coverage

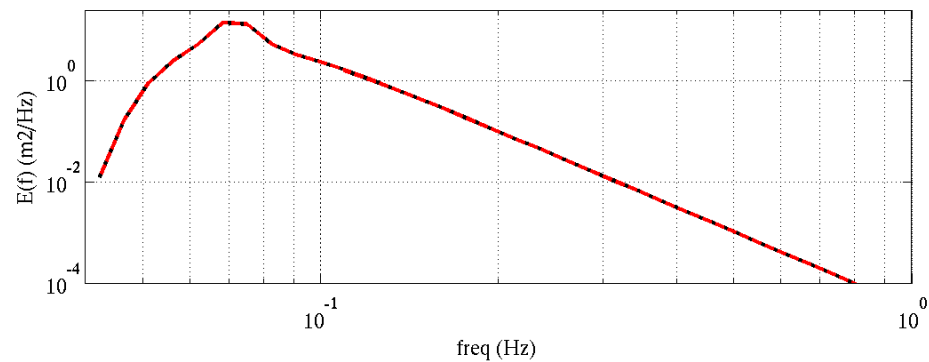
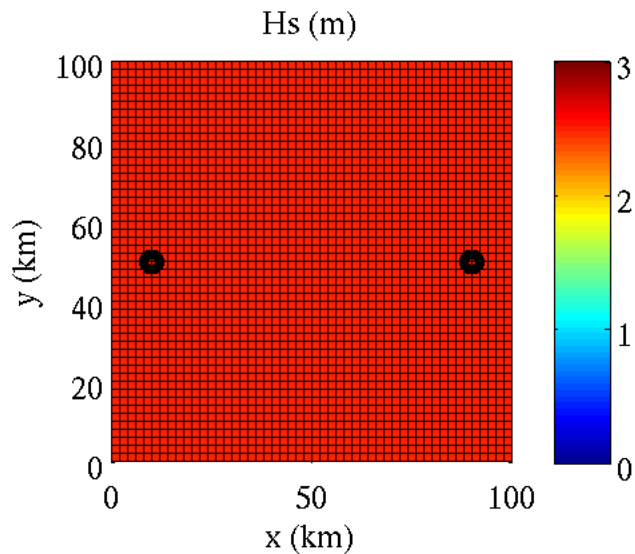
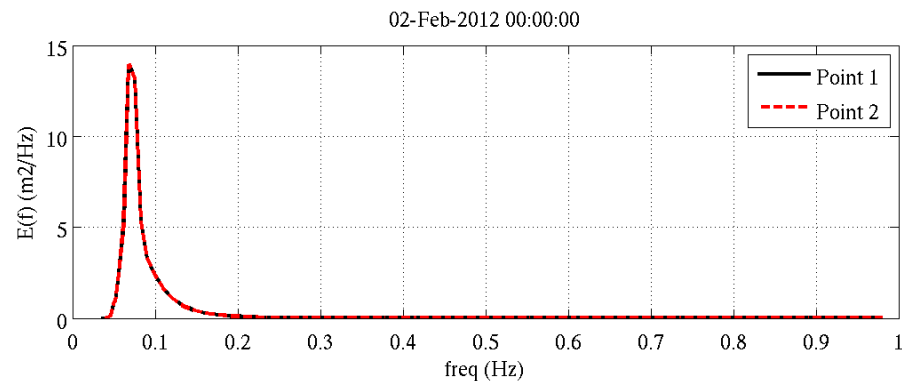
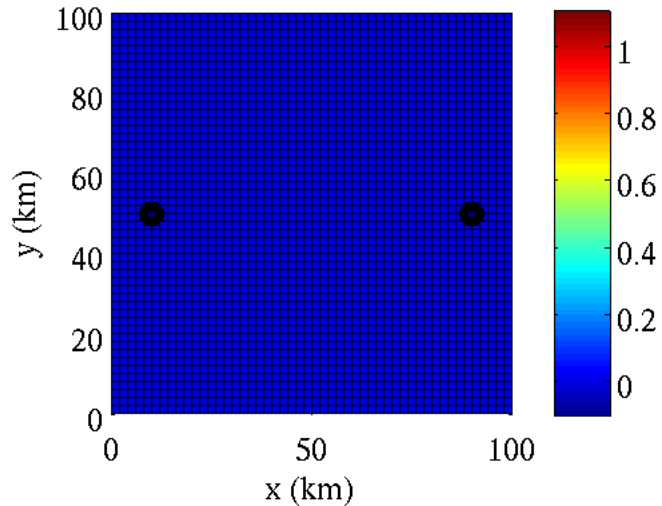


CODA field program



waves and ice

ice concentration (fraction) ; 02-Feb-2012 00:00:00



Coupled system: ROMS + SWAN



CODA timeline

- May 2019: Outreach trip / Science fair
 - Utqiagvik (Barrow), Kaktovik, Wainwright, Pt Lay
- Aug 2019: nearshore moorings via Ukpik
- Nov 2019: shelf moorings and buoys via Sikuliaq
- Aug 2020: mooring recoveries via Sikuliaq

jthomson@apl.uw.edu