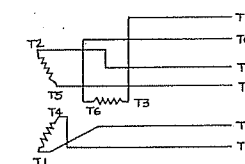
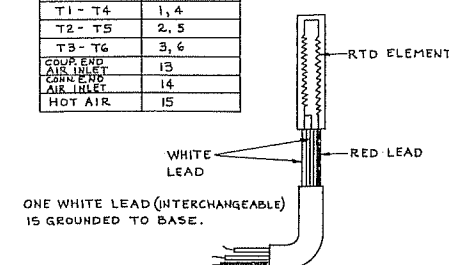


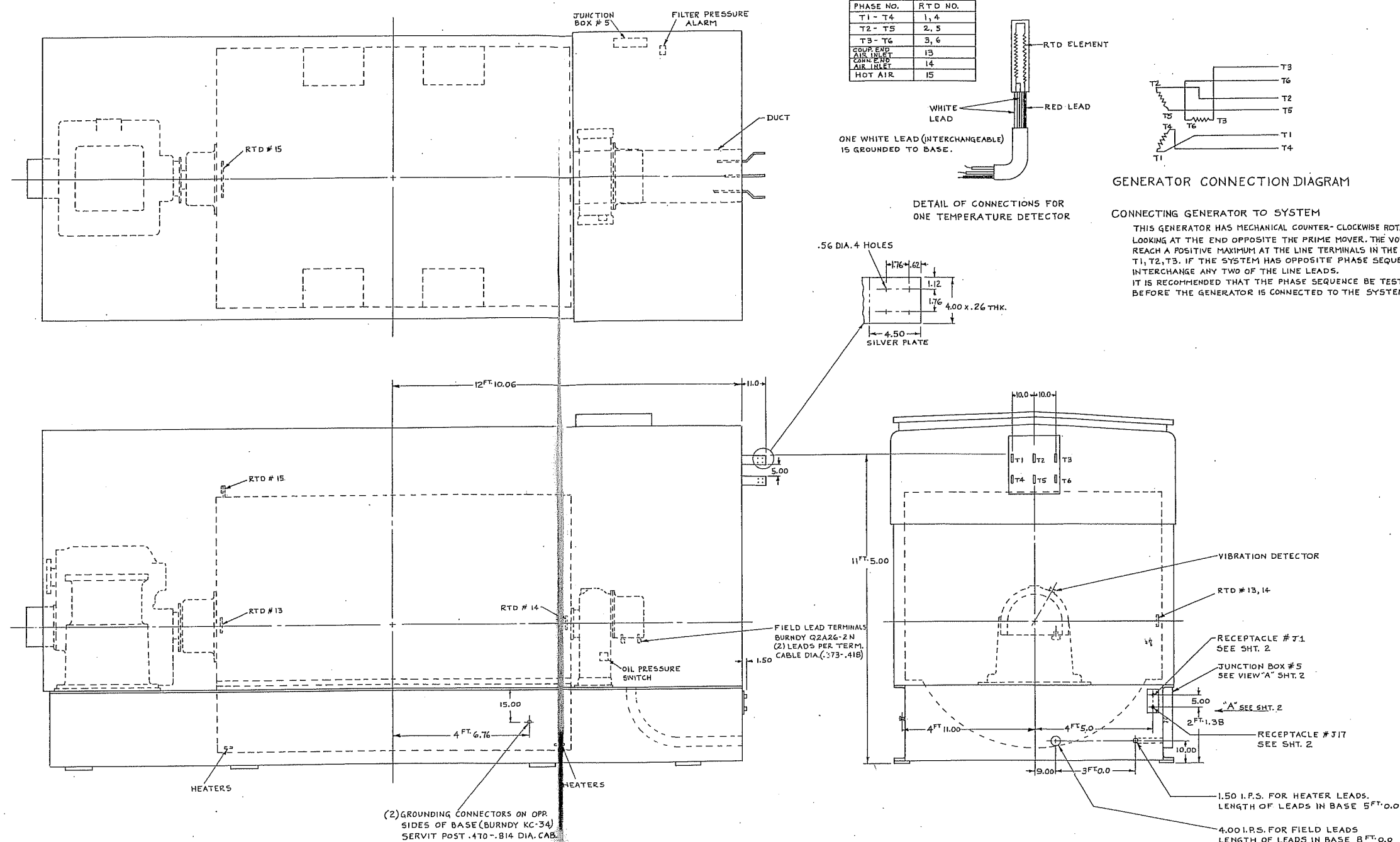
LOCATION OF RTD'S	
PHASE NO.	RTD NO.
T1 - T4	1, 4
T2 - T5	2, 5
T3 - T6	3, 6
COUP. END AIR INLET	13
CONN. NO AIR INLET	14
HOT AIR	15



### GENERATOR CONNECTION DIAGRAM

## CONNECTING GENERATOR TO SYSTEM

THIS GENERATOR HAS MECHANICAL COUNTER- CLOCKWISE ROTATION  
LOOKING AT THE END OPPOSITE THE PRIME MOVER. THE VOLTAGES  
REACH A POSITIVE MAXIMUM AT THE LINE TERMINALS IN THE ORDER  
T<sub>1</sub>, T<sub>2</sub>, T<sub>3</sub>. IF THE SYSTEM HAS OPPOSITE PHASE SEQUENCE  
INTERCHANGE ANY TWO OF THE LINE LEADS.  
IT IS RECOMMENDED THAT THE PHASE SEQUENCE BE TESTED  
BEFORE THE GENERATOR IS CONNECTED TO THE SYSTEM.



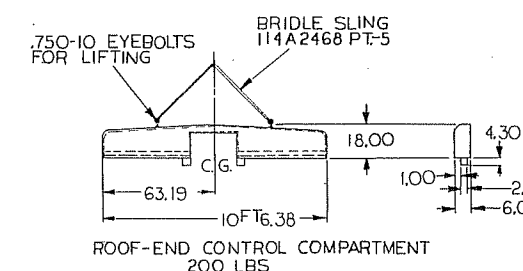
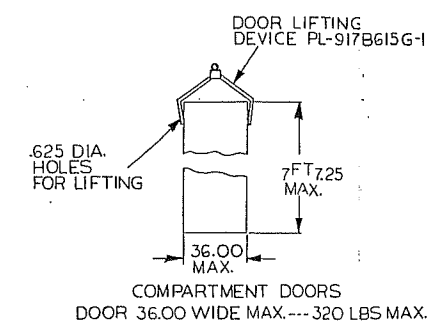
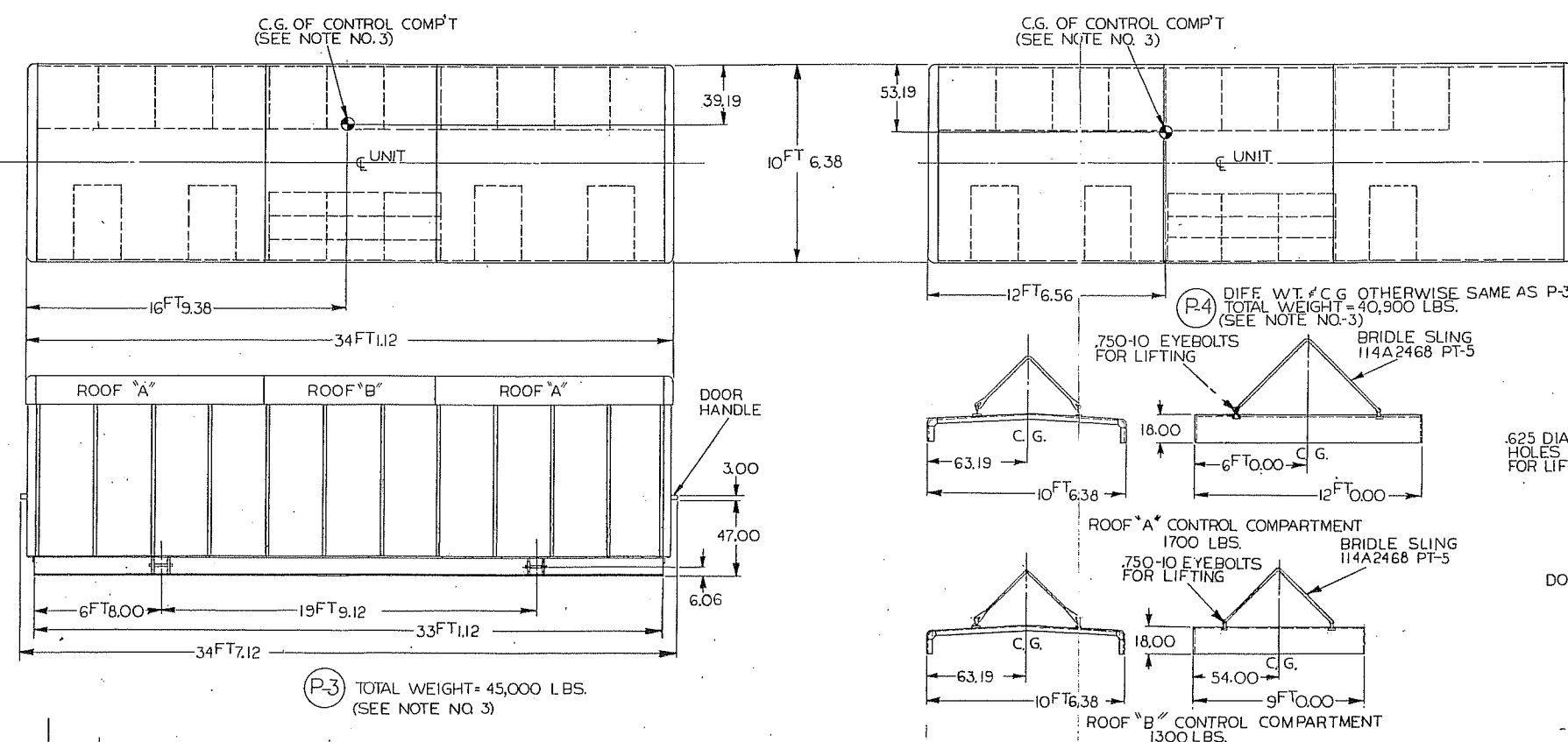
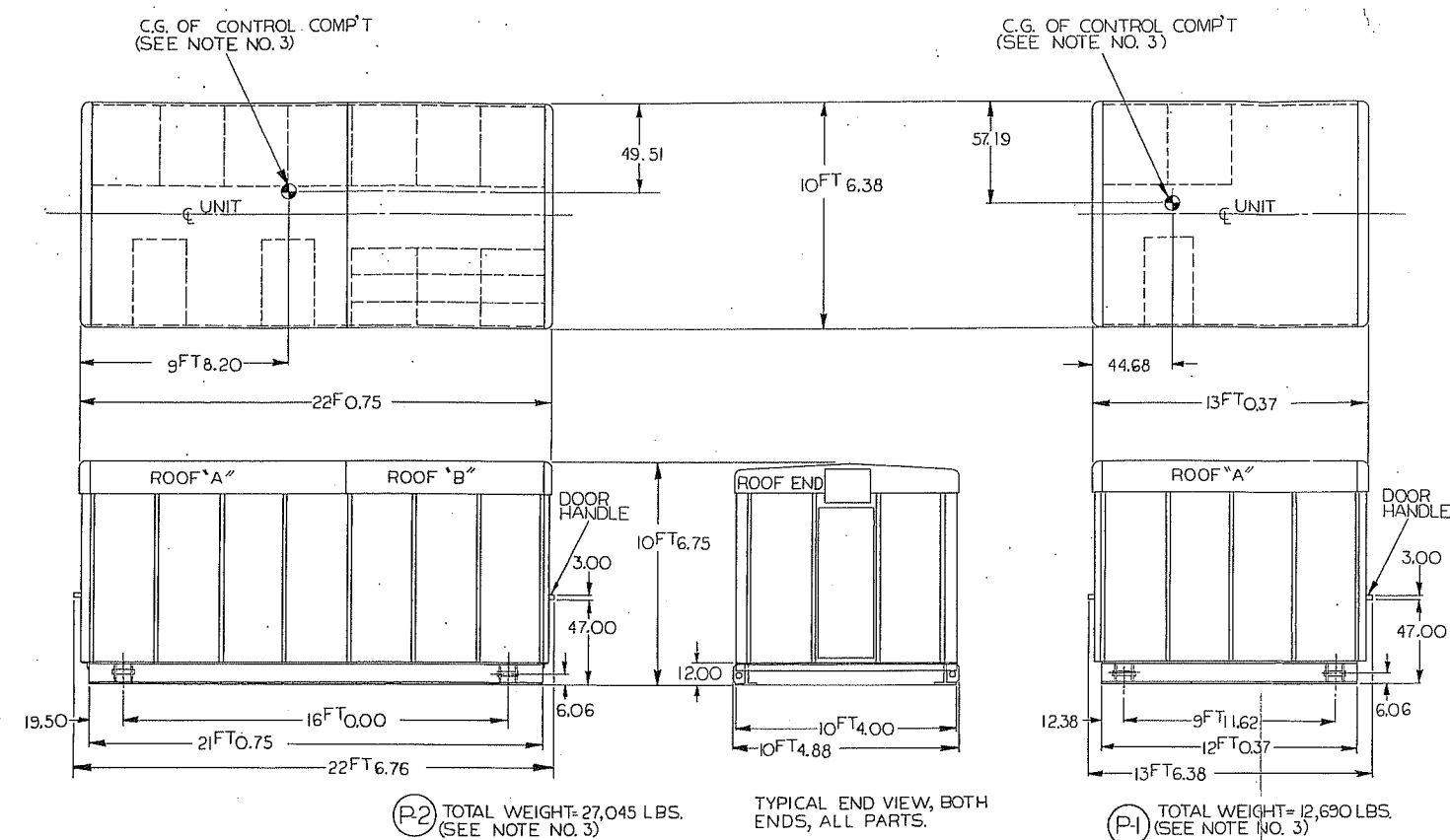


676D182

CONT. ON NEXT PAGE

NOTES

- 1-ALL WEIGHTS AND C.G. DIMENSIONS, ARE APPROXIMATE.
- 2-FOR TOOLS SEE "TOOL LIST, DWG." CALLED FOR ON UNIT M.L. OR CONSTRUCTION PRINT LIST.
- 3-WEIGHT AND CG'S OF EACH PART ARE GIVEN EXCLUDING, BATTERIES, AIR CONDITIONER(S), HEATERS AND LIGHT FIXTURES. CONTROL UNIT IS NOT TO BE LIFTED WITH THESE ITEMS IN PLACE.

[illegible]