

FOR
SALE

Quarry

RIDGE PHASE III

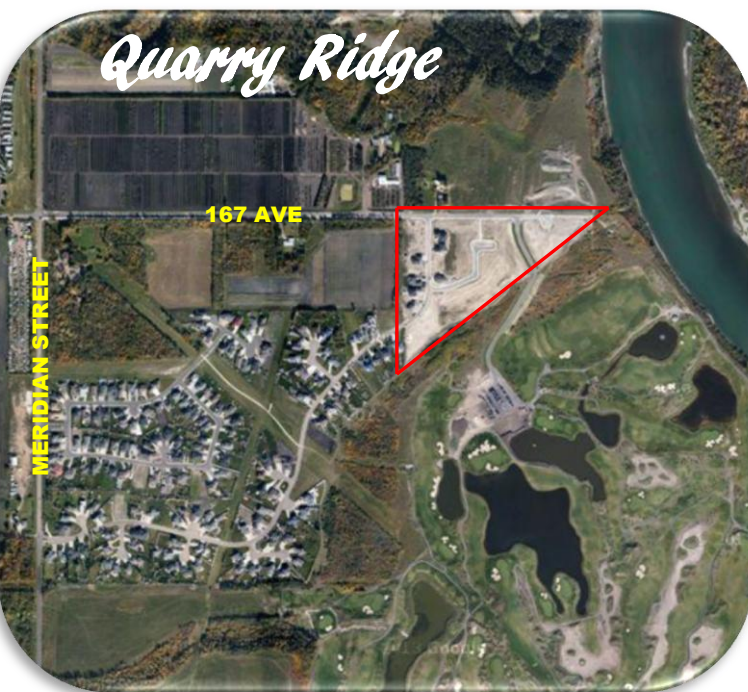
AT HORSE HILLS

OVER 75% SOLD



www.thequarryedmonton.com

780-447-8437



Quarry Ridge Phase III is located on the banks of the North Saskatchewan River, at the east end of 167th Avenue and east of Meridian Street. It overlooks the new 27 hole Championship Golf Course, The Quarry.

- Residential river view lots of 1/2 acre and larger
 - 27 hole Quarry Golf Course is now fully open
 - Linked to river valley parks & trail systems
 - Minutes from Anthony Henday and the Edmonton Energy Technology Park
- START BUILDING TODAY!**



Herman Gee – Broker – hgee@realtyworksre.com Cell: 780-445-9320
Murray McKay – Senior Associate – murray@realtyworksre.com Cell: 780-940-2100
600, 10117 Jasper Avenue, Edmonton, AB T5J 1W8
Phone: 780-409-8072 Fax: 780-638-2056 www.realtyworksre.com





HISTORY OF QUARRY RIDGE

- In 1995 the first phase of development was approved and in 2003 further rezoning of the lands was approved for Phase II with Phase I being developed in 2000 with 78 estate lots and Phase II developed in 2005 with 87 estate lots.
- In 2005, a Development Permit for a 27 hole championship golf course was approved to facilitate the reclamation of the gravel extraction site. Construction is nearly complete.
- The golf course banks of the North Saskatchewan are an integral part of the River Valley Trail System with a future pedestrian bridge across to the County of Strathcona.

AMENITIES

- Quarry Ridge Phase III is an Architecturally designed neighbourhood integrating greenways, wildlife habitat, pedestrian paths and roadways to create a sustainable mix of low density housing in an area with urban agriculture and all the amenities of commercial, recreational and educational facilities.
- Quarry Ridge is located 5 minutes east of the Edmonton Energy Technology Park, excellent access to all areas of Edmonton when the Anthony Henday is completed.
- Quarry Ridge's proximity to Alberta's Industrial heartland saves travel time for those working in the surrounding municipalities that want the lifestyle of acreage living in the City.

KEY FEATURES OF QUARRY RIDGE, PHASE III

- Landscaped public park with views of the River Valley and golf course.
- Increased public walking access to the River Valley through the continuation of the top of bank walkway system.
- Facilitates vehicular access to the golf course.
- Architecturally controlled with the highest City standards.
- Private Cul-de-sac lots
- Walk out lots that range from ¼ to ¾ acres.
- Stunning views.



FOR SALE

QUARRY RIDGE, PHASE III, EDMONTON, AB

PREFERRED BUILDERS



CONTACT
 P: (780) 457-9277
www.iconichomes.ca

ICONIC ESTATE HOMES
Personal Builder



HORIZON DESIGNS LTD.

Architectural Guidelines

July 13th, 2011

ON
www.realtyworksre.com

Quarry Ridge Estates
 Estate Living

EquiBuilt Homes Ltd



Raymon Gill
 P: (780) 965-3167
equibuilthomes@gmail.com

- **CHOOSE YOUR OWN BUILDER**
- **EXCLUSIVE CUL-DE-SAC**
- **QUARTER ACRE LOTS TO 3/4 ACRE LOTS**



- **HIGHEST STANDARD OF DESIGN AND CONSTRUCTION**
- **SITE SPECIFIC DESIGN**
- **RIVER VIEW, RAVINE VIEW AND GOLF COURSE VIEW LOTS**

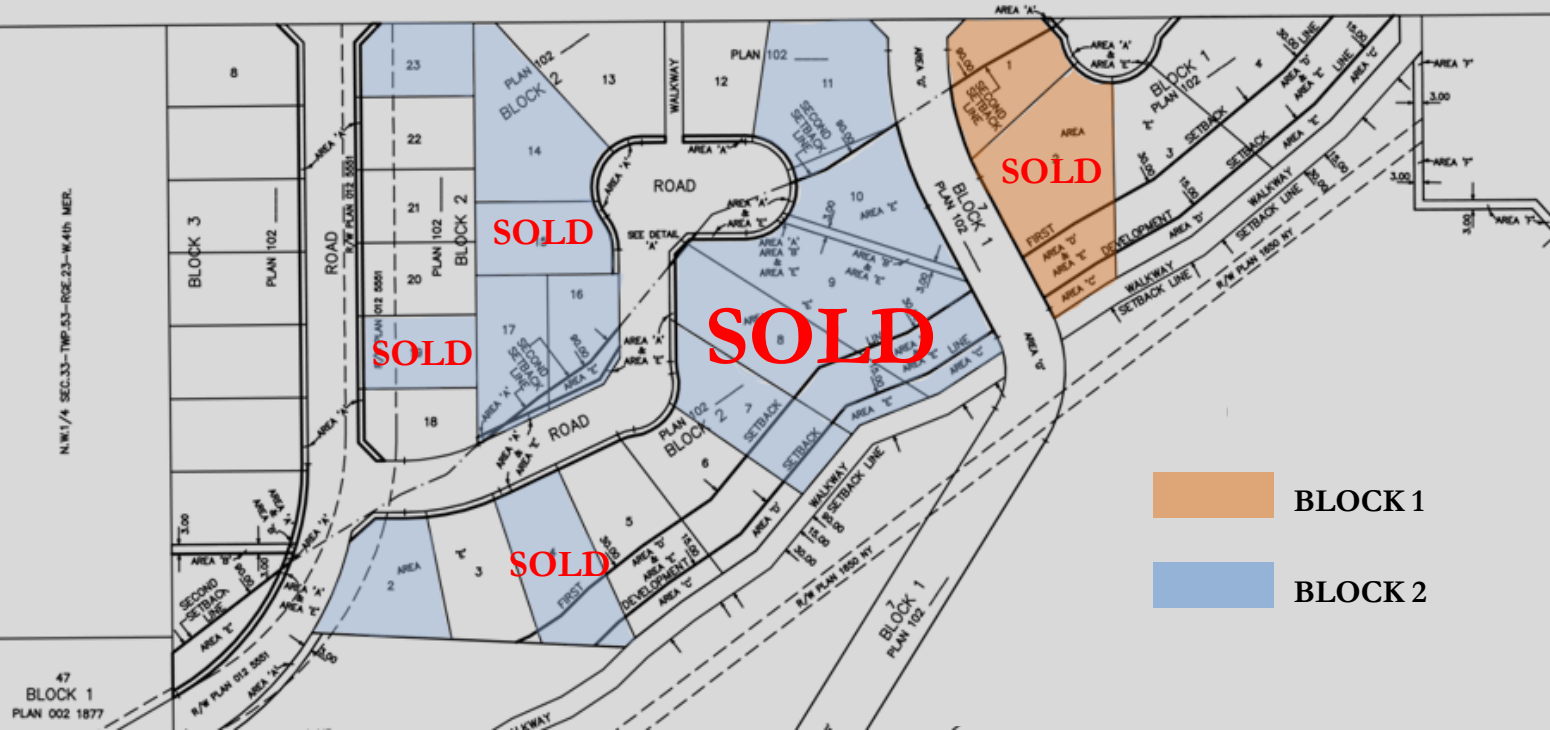
Receive a 1 year membership to The Quarry Golf Course with the purchase of each lot or an all inclusive 5 day 4 night trip for 2 from Vancouver to Duncanby Lodge in B.C
 (airfare to Vancouver not included)




duncanbylodgemarina.com



www.thequarryedmonton.com



BLOCK	LOT	PRICE
1	1	\$449,000
1	SOLD	\$639,000

BLOCK	LOT	PRICE
2	2	\$399,000
2	10	\$449,000
2	11	\$449,000
2	14	\$449,000
2	16	\$309,000
2	17	\$329,000
2	23	\$279,000

Prices Subject to change without notice.

ALL LOTS ARE PLUS GST.



- Builder Packages Available
- Subdivision has been completed
- All services in the subdivision are installed
- 167th Ave to urban standard