

a# minor

relative major: C# +

key signature: f# c# g# d# a# e# b#

a# minor natural

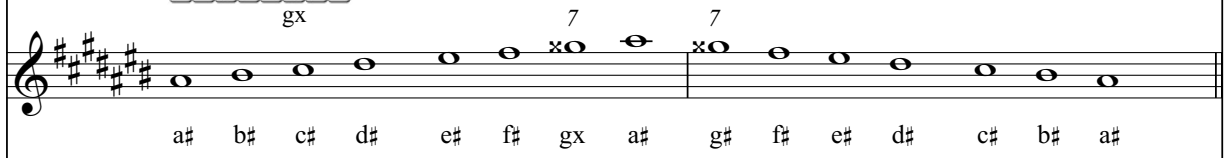
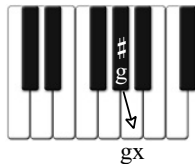
The natural minor simply borrows the key signature of it's relative, C# major.



a# minor harmonic

The 7th note is raised a half step ascending and descending the scale.

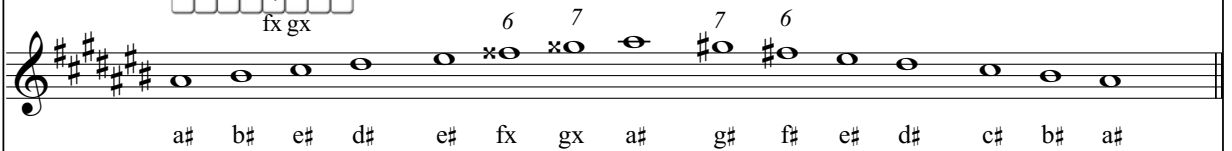
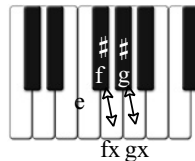
The 7th note is g# and is raised to gx
(g double sharp or g augmented) creating the LEADING NOTE.



a# minor melodic

The 6th and 7th notes are raised a half step ascending the scale and lowered a half step descending the scale.

Ascending the scale the 6th note is f# and is raised to fx.



The composition *Greensleeves* is frequently arranged in the key of a minor.

For instruction purposes, the excerpt has been transposed to a# minor. ☹️

Note the gx LEADING NOTE and fx from the *melodic* minor scale.

