



236 E. 161st Place (Suite A)
South Holland, IL 60473

Phone: (708) 596-4455
Fax: (708) 339-6269
jgillandcompany.com

Client: O'Hare International Airport
(Chicago, IL)

Project Manager: Jim Bax

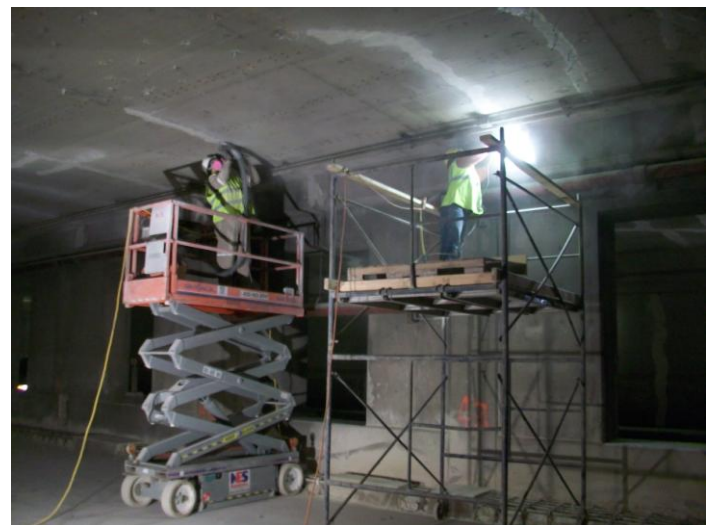
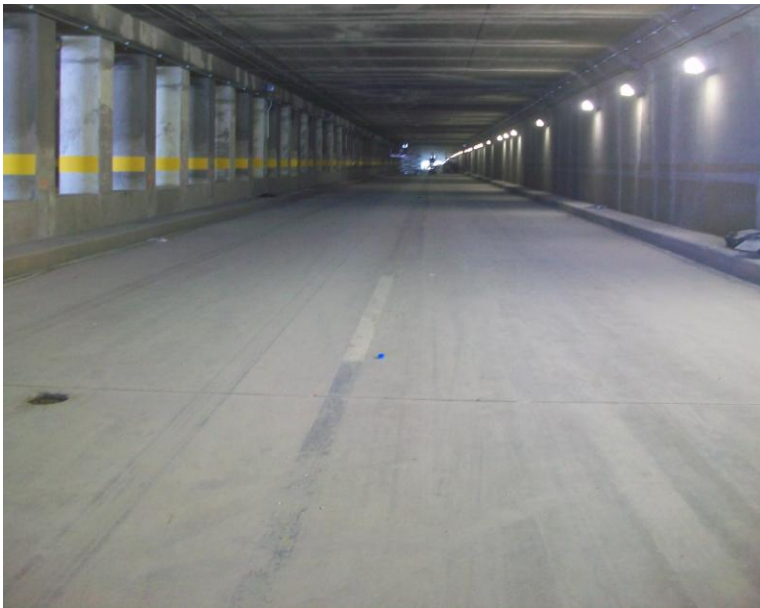
Project Superintendent: Jeremy Gregorec

Project Description:

In the Summer of 2011, J.Gill and Company was hired to perform various concrete repairs on the 10C-29C Cargo Tunnel at O'Hare Airport. In order to save the existing structure and stop numerous leaks in the tunnel, over 15,000 LF of cracks were injected with epoxy or grout. The project was performed in 2 phases and completed in the spring of 2012. The overall contract value was \$989,263.60.

Scope of Work:

- | | |
|-------------------------|-----------|
| 1. Epoxy Injection | 5,419 LF |
| 2. Grout Injection | 10,299 LF |
| 3. Concrete Wall Repair | 107 SF |
| 4. Concrete Curb Repair | 4,371 SF |
| 5. Shotblast & Sealer | 30,745 SF |



Miscellaneous Project Pictures:

