

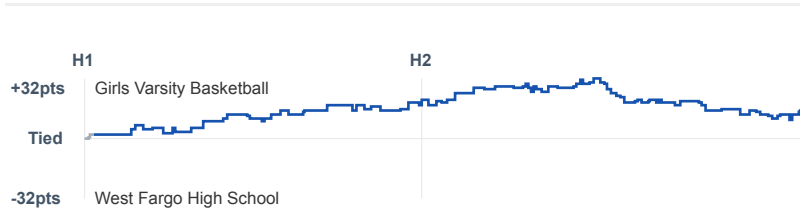
Box Score Report

Girls Varsity Basketball vs West Fargo High School - Dec 2, 2017 - W 87-72

Period Stats

	1	2	
JHS	42	45	87
WFHS	21	51	72

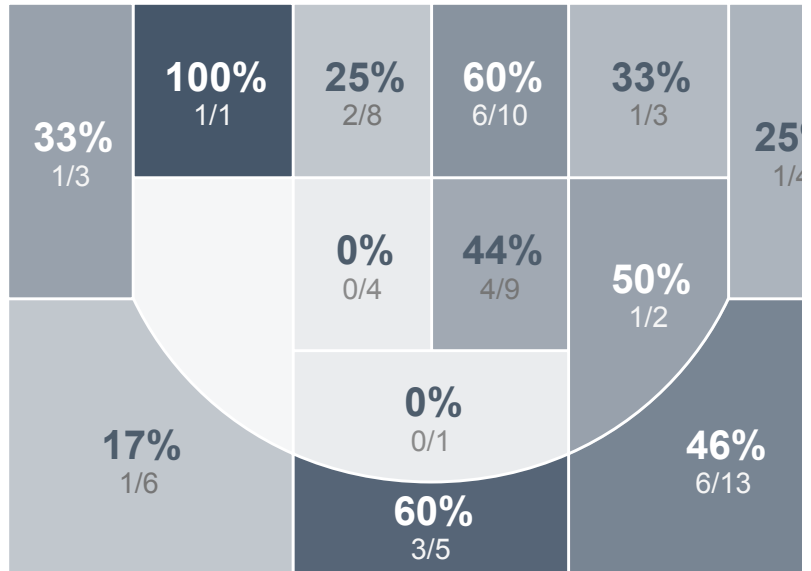
Run Graph



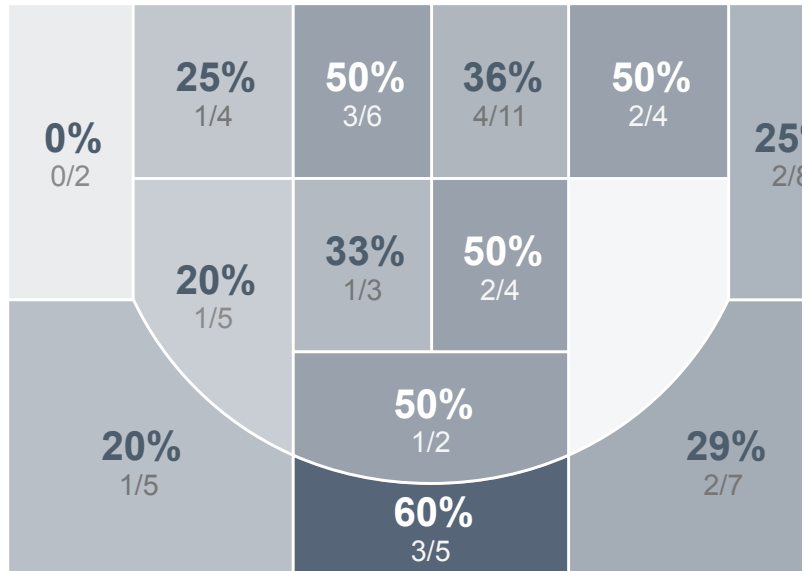
Team Stats

	JHS	WFHS
FG Made/Attempted	27/69	23/66
Field Goal %	39.1%	34.8%
Effective Field Goal %	47.8%	40.9%
2FG Made/Attempted	15/38	15/39
2FG %	39.5%	38.5%
3FG Made/Attempted	12/31	8/27
3FG %	38.7%	29.6%
FT Made/Attempted	21/33	18/27
Free Throw %	63.6%	66.7%
Points Per Possession	1.03	0.83
Transition Points	16	15
Points Off Turnovers	17	12
Second Chance Points	13	12
Points in the Paint	24	20
Offensive Rebounds	17	12
Defense Rebounds	33	30
Assists	23	7
Deflections	12	16
Steals	9	8
Blocks	4	6
Turnovers	17	20
Personal Fouls	22	23
Charges Taken	0	0

Girls Varsity Basketball



West Fargo High School



Girls Varsity Basketball's Player Stats

Name	Pts	FG	3FG	FT	+/-	MINS	OREB	DREB	AST	DEFL	STL	BLK	TO	FOUL
#2 Kameron Selvig	19	6/9	5/6	2/3	+ 7	25	2	4	2	1	2	0	3	1
#3 Alyssa Ukestad	7	2/8	2/7	1/3	+ 19	26	0	4	4	1	0	0	6	3
#4 Jessa Anderson	0	0/3	0/1	0/0	- 11	11	0	2	1	0	1	0	2	0
#5 Olivia Nihill	11	3/9	0/3	5/6	+ 21	29	0	1	7	2	2	1	3	3
#11 Megan Gaffaney	19	6/16	1/4	6/8	+ 15	30	5	10	5	6	3	2	1	5
#14 Courtney Peterson	22	7/15	4/9	4/4	+ 12	26	3	5	3	0	1	0	2	5
#15 Katherine Horgan	6	2/6	0/1	2/5	+ 13	21	4	3	0	1	0	1	0	4
#30 Jessica Walter	3	1/3	0/0	1/4	- 1	12	1	3	1	1	0	0	0	1

West Fargo High School's Player Stats

Name	Pts	FG	3FG	FT	+/-	MINS	OREB	DREB	AST	DEFL	STL	BLK	TO	FOUL
#4 Grace Faiman	17	5/17	5/12	2/2	- 1	27	0	2	1	4	1	1	2	2
#5 Callyn Johnson	4	1/6	1/3	1/2	- 5	29	0	5	1	2	2	0	4	4
#10 Lauren Limke	0	0/3	0/2	0/0	- 7	19	1	5	0	1	1	0	2	3
#11 Madison Pearson	0	0/0	0/0	0/0	- 5	5	0	1	0	0	0	1	1	0
#12 McKenna Becher	29	8/18	0/2	13/19	- 8	33	4	4	3	2	3	0	4	3
#20 Lauren Diemert	7	3/8	1/5	0/0	- 16	18	0	2	0	2	0	1	0	2
#21 Mady Nelson	0	0/1	0/0	0/0	- 7	3	1	0	1	0	0	0	0	1
#22 Abby Donarski	6	3/5	0/0	0/2	- 20	19	2	3	0	5	0	0	5	4
#32 Courtney Boll	0	0/1	0/0	0/0	- 1	5	0	0	0	0	0	0	0	1
#33 Mariah Peters	9	3/7	1/3	2/2	- 5	19	1	5	1	0	1	3	2	3