

An MLT-based Approach to Teaching Swing Style and Improvisation in Concert Band

**Presented by
Jennifer McDonel and
Richard Victor**

Step One

Learn the Tune!

Step Two

Learn the Chord Roots!

Step Three

**Improvise Rhythmically
on the Chord Roots**

Step Four

**Improvise Rhythmically
on the Harmonic Progression**

Voice Leading for Improvisation Activities

A musical staff in treble clef, B-flat major (two flats), and 4/4 time. The staff is divided into two measures. The first measure is labeled 'I' and contains a whole chord of B-flat major (B-flat, D-flat, F, A-flat) with the solfège syllables 'Sol', 'Mi', and 'Do' written below it. The second measure is labeled 'V7' and contains a whole chord of F minor 7 (F, A-flat, B-flat, D-flat) with the solfège syllables 'Sol', 'Fa', and 'Ti' written below it. The notes are connected by a line, indicating voice leading.

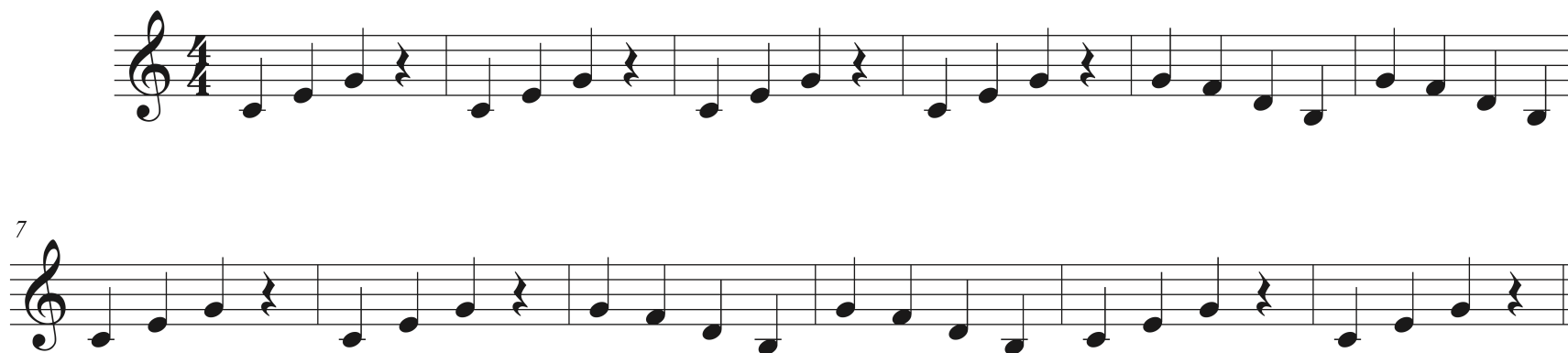
Step Five

**Improvise on the
Harmonic Progression
using chord tones**

Exercise 5a.

Predetermined chord tones and rhythms

Transcribed Example



Exercise 5b.

Predetermined chord tones with improvised rhythms

Transcribed Example



Exercise 5c.

Improvised chord tones with predetermined rhythm

Transcribed Example



Exercise 5d.

Improvised chord tones and improvised rhythms

Transcribed Example



Three Minute Warm Up

1. The tune
2. The bass line
3. Predetermined chord tones and rhythm
4. Predetermined chord tones with improvised rhythms
5. Improvised chord tones with predetermined rhythm
6. Improvised chord tones and improvised rhythms

Step Six

**Improvise on the
Harmonic Progression
adding non-chord tones**
(passing tones, neighbor tones and chromatics)

Exercise 6a. – Passing Tones

Improvised note choices and improvised rhythms

Transcribed Example



Exercise 6b. – Chromatic Tones

Improvised note choices and improvised rhythms

Transcribed Example

