

half steps and enharmonic equivalents exercise



Enharmonic Equivalents share the same sound but have *two different* letter names.

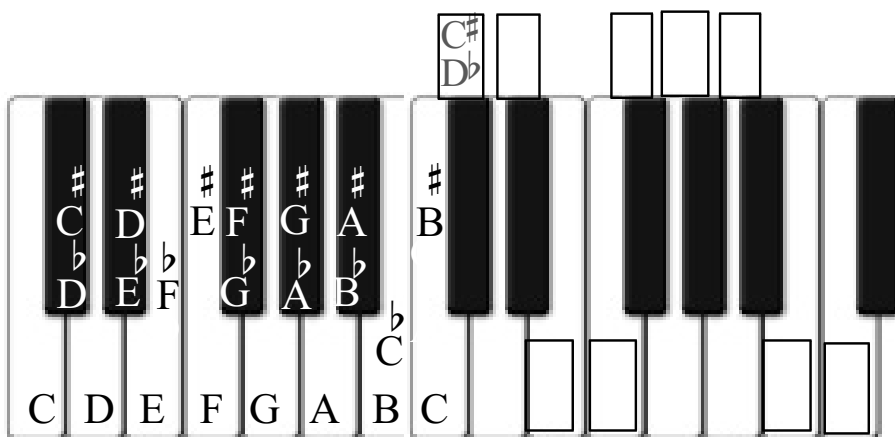
Refer to the keyboard below.

Each black key on the keyboard has *2 names* (e.g. C# = Db; Bb = A#) but *share the same sound*. Also, the white half step notes (E F and B C) each has an enharmonic equivalent; ex. E = Fb; F = Eb; B = Cb; C = B#

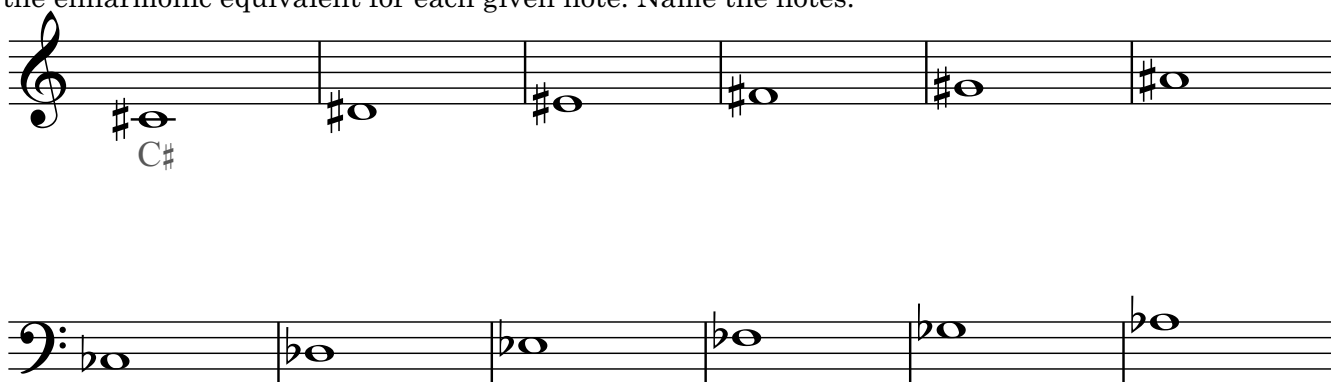
Exercises:

1. Write the enharmonic equivalents in the boxes on the keyboard. Check your work.
2. Write the enharmonic equivalent beside each letter name. Check your work.

C# =	Db =
D# =	Eb =
E# =	Fb =
F# =	Gb =
G# =	Ab =
A# =	Bb =
B# =	Cb =



3. Write the enharmonic equivalent for each given note. Name the notes.



4. Name the notes. Indicate if the notes are an enharmonic equivalent (EE) under the letter names.

