



Economic Development Council
of Okaloosa County, Florida

Tri-County Community Partnership Initiative

Advisory Board Update

Nathan Sparks
Sal Nodjomian

October 24, 2017

Agenda

- Welcome and Opening Comments
- Welcome
- Work Group Updates
 - Spotlight: Environment / Ecotourism
 - PumpOut, Craig Barker
- Work Group Vector Check
- Closing Comments
 - Way Ahead Schedule



Environmental and Ecotourism



Co-Chairs: Erika Zambello, Bruce Hagedorn, Amy Nicholson/Marty Tabor

Partnership Activity	Status
<u>Concrete to Reefs</u> Arbennie Pritchett storage site.	Continuing to advance.
<u>Okaloosa Island/East Pass Parking Area</u> Stakeholder meetings, design, implementation	Evaluating potential as a project.
<u>College Pond/Roberts Lake</u> Restoration, dam replacement, recreation amenity	Evaluating potential as a project.
<u>Grasses in Classes, White Point</u> Classes to plant new sea oats as part of hands-on learning experience.	Discussing what permissions would be necessary.
<u>Gulf of Mexico Estuary Program</u> Create an estuary program similar to the National Estuary Program to improve Choctawhatchee Bay water quality. (http://nationalestuaries.org/about-anep).	<ul style="list-style-type: none">• Application submitted• Choctawhatchee Bay Estuary Coalition announced; Eglin granted ex-officio member.

Gulf Coast Economy Preservation Project

Craig Barker



Background photo credit to John B Weller

Confidential and Proprietary Information of PumpOUT USA, Inc.

Information, data and drawings embodied in this proposal are strictly confidential and are supplied on the understanding that they will be held confidentially and not reproduced, disseminated, or disclosed to third parties without the prior written consent of PumpOUT USA, Inc.

Our Request of TCPI

- Letter of support from the Tri-County Community Partnership Initiative

And;

- Letter of support from the organization you represent
 - Will provide a separate briefing for your organization upon request

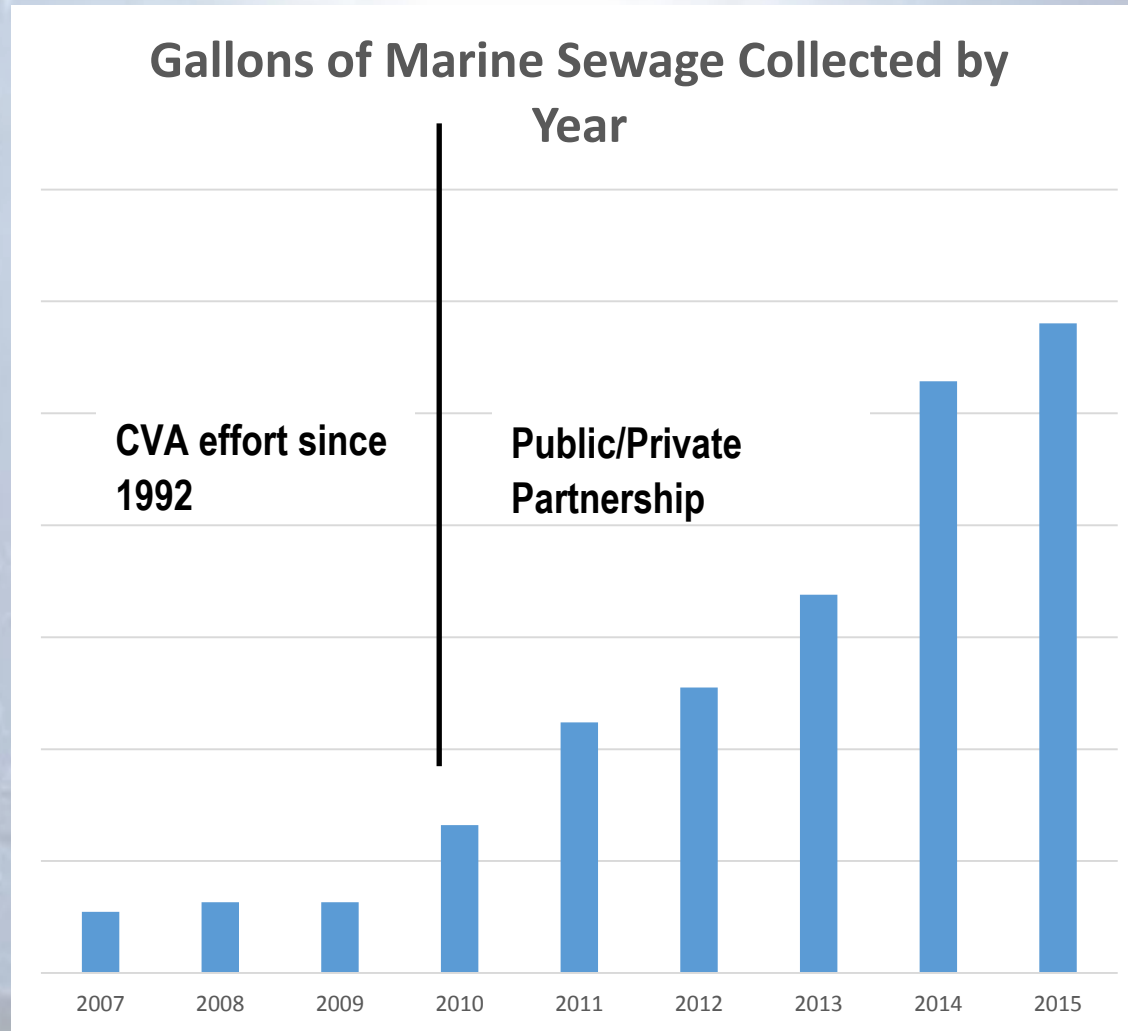
Partnership for a Mobile pump-out Service

- From 1992 – 2010 Monroe County, Florida deployed land-based pumpout facilities throughout the Florida Keys and implemented every regulatory enforcement means possible to prevent unlawful discharge of marine sewage
- Cognizant that this effort was failing, in 2010 Monroe County, the Florida DEP, the CVA, and Mote Marine Laboratory proactively partnered with PumpOut USA to help solve their marine sewage problem
- This public/private partnership placed six specially-crafted mobile marine pump-out boats into service to provide free pump-outs to vessels in the Florida Keys. PumpOut USA was responsible for every facet of the program
- The results of this Partnership are astounding:

Public/Private Partnership Results

- Even though the CVA program has been active in Monroe County since 1992, last year the Public/Private Partnership collected and properly disposed of over 10 times the amount of sewage than all the land-based systems in the Florida Keys combined.
- Within 3 years the Public/Private Partnership had prevented more than 1,000,000 gallons of raw sewage from entering the waterways.

Results, continued



Data courtesy of Florida Department of Environmental Protection

Confidential and Proprietary Information of PumpOUT USA, Inc.

Information, data and drawings embodied in this proposal are strictly confidential and are supplied on the understanding that they will be held confidentially and not reproduced, disseminated, or disclosed to third parties without the prior written consent of PumpOUT USA, Inc.

“When I first started working at Boot Key Harbor it was a 100% polluted waterway and the water clarity was virtually zero. At least 100,000 gallons of raw sewage was dumped into the water each year and the basin was toxic to both wildlife and people. But thanks to the mobile pump-out service it is now a vibrant marine environment teaming with wildlife and recreational boaters and the water clarity is crystal clear. And the boater’s attitude about sewage has completely changed... now the first question we get is how do we get pumped out?”

**Mr. Sean Cannon –
Ports Director for Boot Key Harbor**

“The Services of Pump-Out USA have been invaluable over the years to reducing the wastewater and resulting nutrient impacts to the nearshore waters of the Florida Keys. Notable, in the first year after acquisition of Donnie Brown’s first pump-out platform, we pumped over 100,000 gallons of vessel effluent from those boats located in Boot Key Harbor, Marathon. That was twelve years ago. The improvements in water quality and clarity in the harbor today are marked. The County continues to use Pump-Out USA services to pump-out vessels throughout the Keys. I cannot speak highly enough about Donnie Brown, Pump-out USA, and the impacts that his entrepreneurial business have had toward improving water quality in the Florida Keys.”

**Mr. George Garrett –
Deputy City Manager, City of Marathon, FL**



August 8, 2016

PumpOut USA
Capt. Donnie Brown

Dear, Captain Brown,

As the Executive Director of the Mote Tropical Research Lab in the Florida Keys, I am pleased to be able to comment on the exceptional impact that PumpOut USA has had on the water quality of the Florida Keys. It has come to everyone's attention in the Florida Keys that our near shore water quality affects our quality of life and the condition of our corals reefs. All efforts to control storm water runoff, advanced wastewater treatment instead of septic systems have made a large improvement in our water quality conditions. But all local and regional stressors must be brought under control for us to continue to improve our tropical environment, coral reefs, seagrass beds and fisheries populations. With increasing human impacts, we must be more diligent in addressing our "no-discharge" regulations for our Florida Keys National Marine Sanctuary. To do this we must continue to provide an alternative to illegal discharging from marine vessels if there is no easy way for vessel to get wastes removed. This program proved the large volume of waste water that would have been illegally discharged under a "business as usual" program of previous years. This "no-charge" program is the only way this large volume of waste is going to get handled legally and removed as a threat to our delicate ecosystem.

I encourage this system to be continued as the only viable way to insure the wastes produced are not illegally discharged. The research is clear, from the sheer volumes of waste handled when pump outs are easy and free. I hope this very important solution is continued here and at other locations

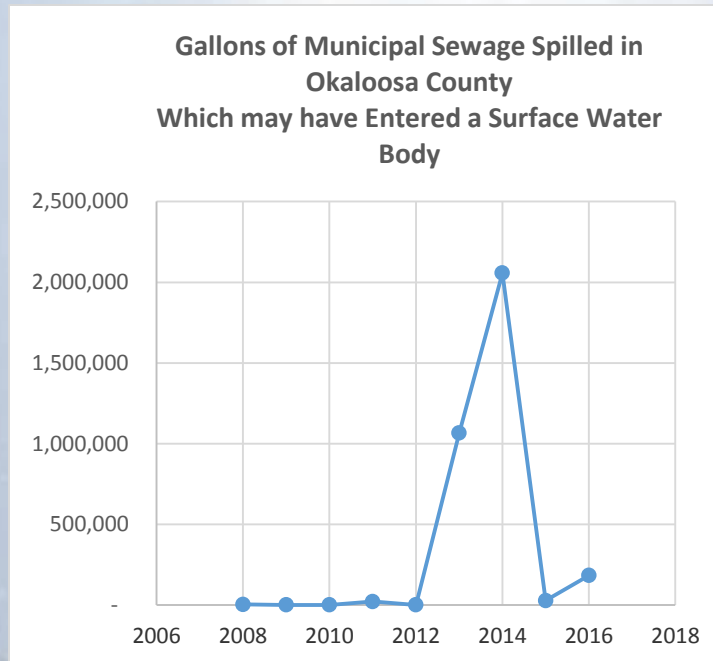
David E. Vaughan, PhD
Executive Director,
Mote Tropical Research Lab

Create New Program for Northwest Florida

- Place 20 pump-out vessels (with 3 backup vessels), and 8 floating restrooms into service for a 10-year period
- Each vessel will provide free pump-outs to the entire boating community within the Service Area. Cost-free service to boaters is the ONLY way to gain 100% compliance
- Each pumpout boat will also collect and dispose of household garbage that it finds floating along its service route
- Program will completely change the culture and mindset regarding illegal sewage discharge and thereby improve water quality

The Marine Sewage Problem in Context

- Over the last nine years a total of 3,364,722 gallons of upland sewage spilled which may have entered a surface water body in Okaloosa County, FL.

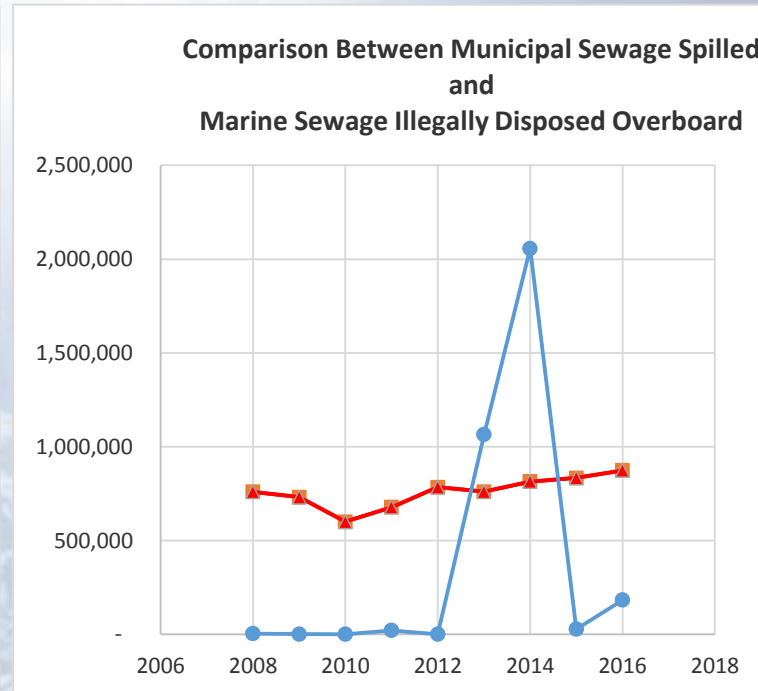
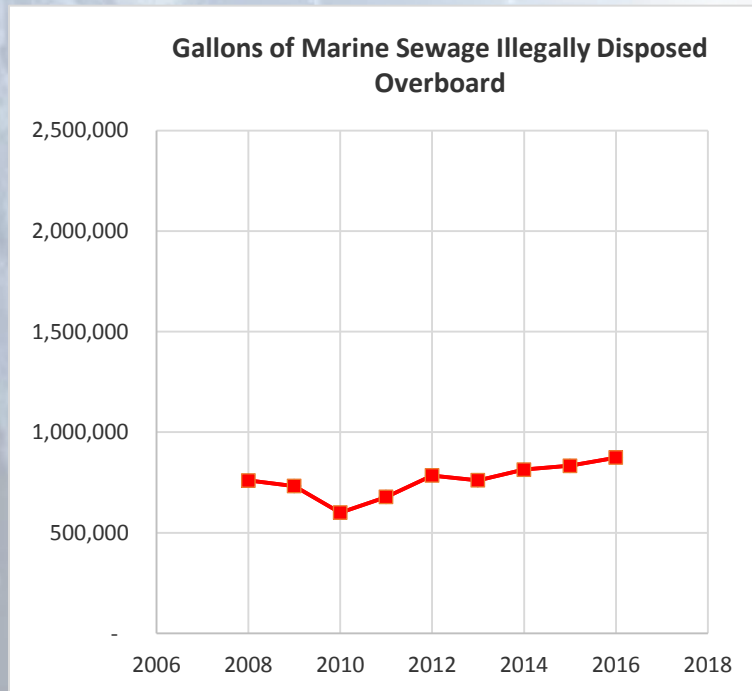


Average of 373,858 gallons spilled/year

- These incidents always make front-page headlines in the newspapers.
- Okaloosa county has invested millions of dollars to resolve such infrastructure issues.
- The bottom line – Society pays careful attention to observable sewage spills**

The Marine Sewage Problem in Context, Continued

- During that same time span, vessels in the Destin Harbor generated more than 7,415,193 gallons of marine sewage - of which only 576,913 gallons was pumped out. So, more than **6,838,280** gallons of raw marine sewage was dumped directly into our nearshore waters.

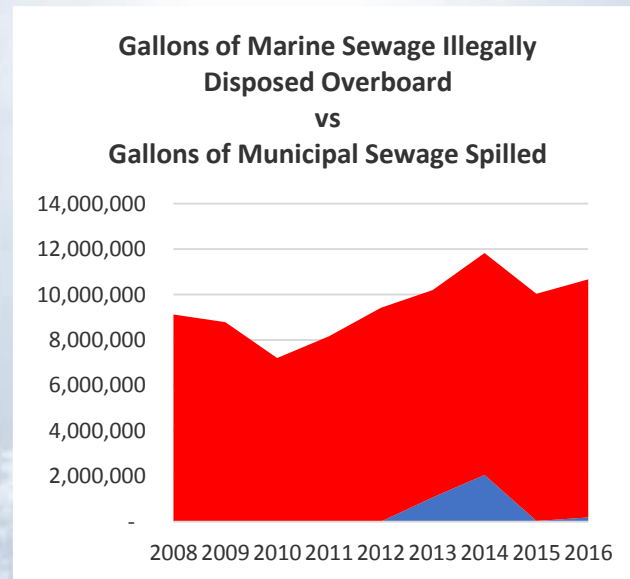


Average of 759,809 gallons of marine sewage disposed overboard each year

- Despite 2X the amount of sewage entering our waters, marine sewage incidents never make front-page headlines in the newspapers. Would harm our robust tourism industry.
- Over the last decade less than \$250,000 has been invested to resolve this problem.
- The bottom line – Out of Sight, Out of Mind.**

The Marine Sewage Problem in Context, Continued

- According to FDEP, Marine sewage is 12X more concentrated than municipal sewage



Conclusion:

In Okaloosa County, illegal dumping of marine sewage is at least 25 times more harmful to our environment than all municipal sewage spills combined.

- Just the vessels in the Destin Harbor alone have disposed overboard the net equivalent of 82,059,363 gallons of municipal sewage over the last 9-years.
- According to the FDEP, “a single overboard discharge of human waste can be detected in up to a one square mile area of shallow enclosed water and can close down shellfish beds for harvesting”.
- Chemical additives (used to deodorize vessel holding tanks) compound the problem. Such additives include; formaldehyde, paraformaldehyde, quaternary ammonium chloride, and zinc sulfate – all of which are catastrophic to marine environments.

A Regional Economy Sustainability Investment

The Florida Panhandle over last 20 years

- Permanent population base has doubled
- Tourism has tripled
- Water-dependent activity has increased more than 600%
- Panhandle has invested billions in upland infrastructure to accommodate this growth
- Negligible corresponding investment in “marine infrastructure”
- Our marine environment is stressed. We have an imminent problem on our hands
- This Project is a proactive, practical, and comprehensive solution for this problem
- Project will preserve and enhance NWF’s robust economy

“This transformative project will improve the overall quality of life for every resident and visitor to northwest Florida and position the region with aquatic capacity to accommodate future growth and prosperity for generations to come”

Partnership with Choctawhatchee Basin Alliance

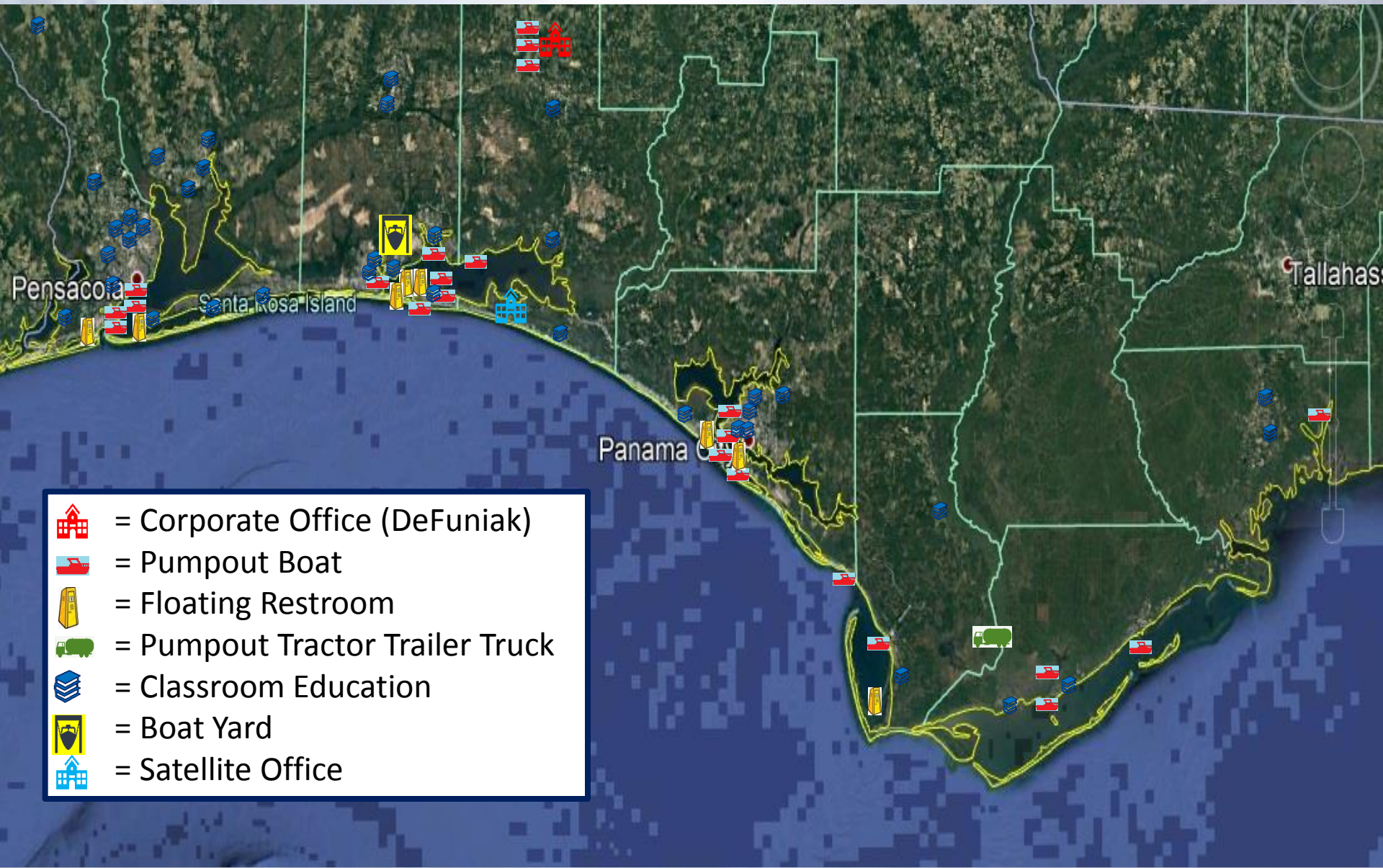
Public outreach

- Extensive outreach about the program to the public, stakeholders, and policy-makers

Classroom education

- Integrate a STEM education module in middle schools to ensure the environmental and stewardship benefits of the pumpout program are perpetually sustainable

Asset Deployment Map



Project Performance

- Project expects to collect the net equivalent of 240,000,000 gallons of raw municipal sewage that will otherwise be disposed overboard in the Northwest Florida area.
- Uniquely bipartisan project which equally benefits all boaters from the impoverished to the ultra-wealthy.
- Just as the 1971 “*Keep America Beautiful*” anti-littering campaign changed America’s tolerance for illegal dumping of roadside trash, this program will forevermore change Northwest Florida’s tolerance for illegal dumping of marine sewage.

Gulf Coast Economy Preservation Project

Discussion



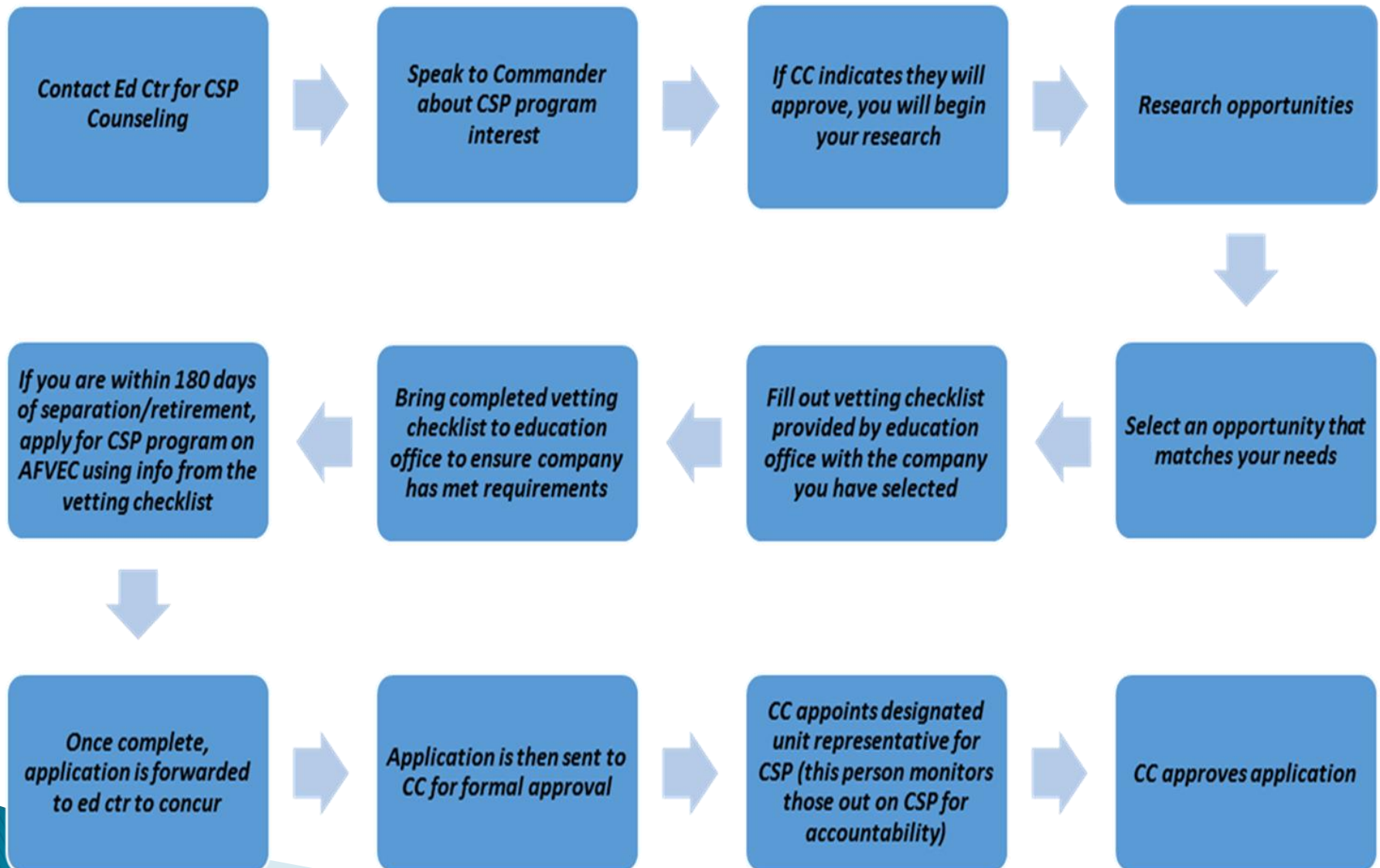
Background photo credit to John B Weller

Education and Training

Co-Chairs: Dennis Sherwood, Dr. Darla Rush


Partnership Activity	Status
<u>Medical Continuing Education</u>	FWB Medical Center has volunteered their staff to work with first responders on physiological issues related to response for assistance. NWFSC will work with FWB Medical Center to coordinate the opportunity
<u>Training for Separating Military</u>	In collaboration with the Military Transition & Work Readiness group, discussed and decided to work on the expansion of the Career Skills Program.

Education and Training



Energy Resource and Innovation

Co-Chairs: Dave Robau, Dan Nocher, Craig Moffett



POWER UP
OCT. 25-26, 2017
Ft. Walton Beach, Florida

The Largest Gathering of
Energy & Sustainability
Professionals Along
the Gulf Coast

www.PowerUpEnergyExpo.com

Free for Government/Military Personnel
Using PromoCode: **FREEGOV**

Building Energy Resilient Communities

Power Up Energy Expo will bring together energy and sustainability professionals from around the world for technical training sessions. Come network with leaders from all sectors of the industry.

Join your colleagues as we discuss timely and informative topics and training workshops. This year's event will feature unique outdoor exhibits and displays along with a vendor area showcasing the latest technologies from industry-leading companies. Learn more at www.PowerUpEnergyExpo.com

Event Location

Ramada Plaza Beach Resort (Host Hotel)
1500 Miracle Strip Parkway, SE
Ft Walton Beach, FL 32548
(850) 243-9161
Room Block Discount: **POWERUP**

For more Information
Dave@GulfCoastEnergyNetwork.org
(850) 855-2108



Military Transition & Work Readiness

Co-Chairs: Terry Cowan, Janice Barnes, LaVonne Vasquez

Active Duty Interns Available

The DoD Skill Bridge program allows Active Duty Servicemembers who are within 180 days of separation to accept internships with your organization.



CRITERIA SPECIFIC TO INTERNSHIPS

- The internship, even though it includes actual operation of the facilities of the employer, is similar to training which would be given in an educational environment
- The internship experience is for the benefit of the intern
- The intern does not displace regular employees, but works under close supervision of existing staff
- The employer that provides the training derives no immediate advantage from the activities of the intern; and on occasion its operations may actually be impeded
- The intern is not necessarily entitled to a job at the conclusion of the internship
- The employer and the intern understand that the intern is not entitled to wages for the time spent in the internship



Contact Terry to participate: tcowan@careersourceow.com

Military Transition & Work Readiness

November 15, 2015 through October 19, 2017– **1,758**

Length in Military	Responses (Percentage)	Responses (Number)
1-4 Years	14.87%	261
5-9 Years	34.25%	601
10-14 Years	11.68%	205
15 Years +	39.20%	688

Planning to stay in the local area?	Responses (Percentage)	Responses (Number)
Yes	40.99%	717
No	38.19%	668
Unsure	20.81%	364



Last 180 days Only Data Planning to remain in local area	Responses (Percentage)	Responses (Number)
Yes	45.61%	218
No	33.47%	160
Not Sure	20.92%	100

If not staying in the local area... why?	Responses (Percentage)	Responses (Number)
Local Pay Scale	21.31%	208
Lack of Job Opportunities	21.31%	208
Family Reasons	51.64%	504
Education Goals	19.98%	195
Cost of Living	13.22%	129
Other	21.62%	211

Military Transition & Work Readiness



OPPORTUNITIES
FOR:

Hurlburt Field
Soundside

14 Nov 2017
1300-1500

Jobs in various fields:
Mechanical
Telecommunications
Information Technology
Aerospace
Technical and Many More



No Need to Register
For More Information
Please Call: A&FRC @ 850-884-5441



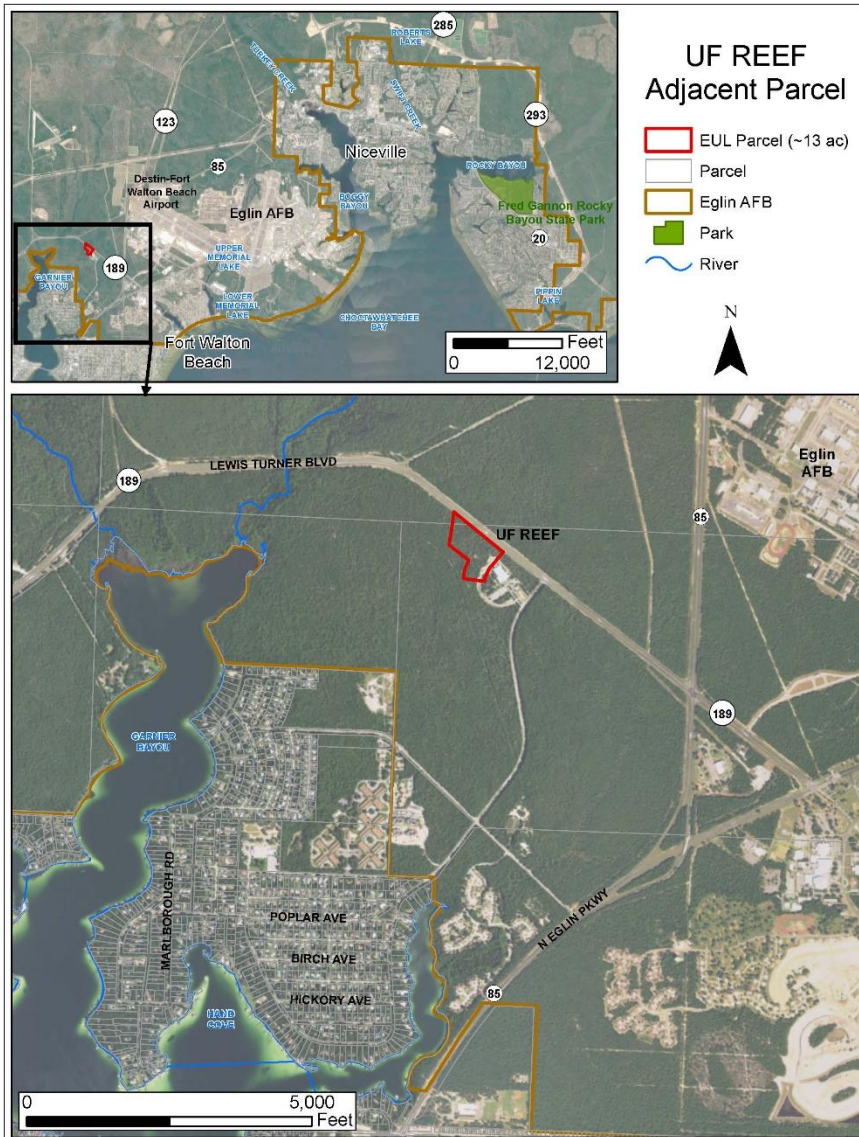
Real Property

Co-Chairs: Glenn Wagner, Nathan Sparks, Glenn Lattanze

Partnership Activity	Status
<u>Courthouse EUL</u> 50 Acre mixed use office park, Lewis Turner Boulevard, FWB	Developer performing due diligence Lease document being prepared for late 2017 execution
<u>Eglin Space Deficit</u> Higher space demand than available; Deficit 250K sq ft 150K Admin (approx. 100K secure space) 50K storage/ 50K other (labs, technical, medical, etc) –Storage 22K IT/high value climate controlled 24K new mission growth/part of larger request	Open to solutions
<u>Energy Center and Orphan Parcel</u> 15 Acres adjacent to UF REEF and MBBC parcel near 285	Working with AFCEC on way ahead
<u>Unsolicited Proposals</u> Work with civilian community to generate ideas for Eglin partnerships that involve real property <ul style="list-style-type: none"> • Destin Bridge beach and Eglin Beach Club area 	TCPI Environmental and RE working groups evaluating area to determine nature/extent of problems.

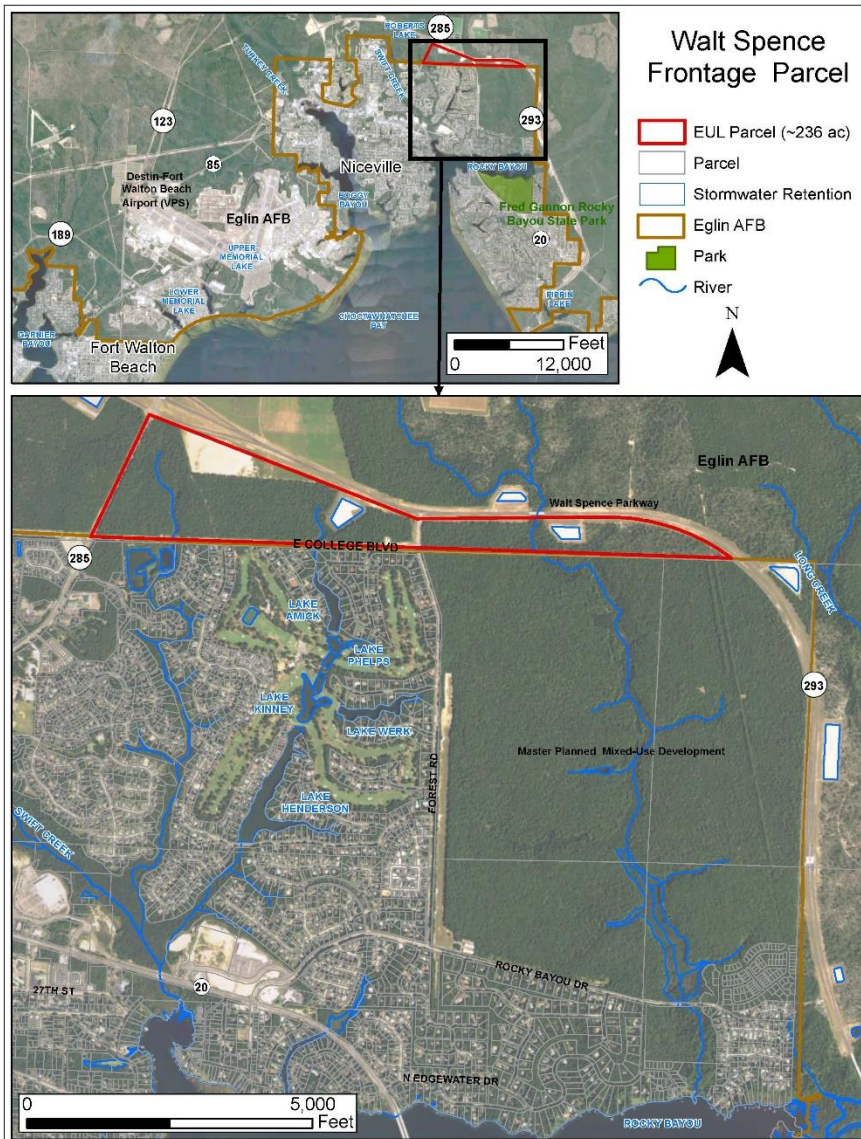
Eglin EUL Community Survey

- ▶ 4 question, online survey soliciting input from Advisory Group on 2 potential Eglin EULs
 - UF REEF Adjacent EUL
 - 13 acre site
 - Along Lewis Turner Blvd next to UF REEF
 - Walt Spence Pkwy EUL
 - 236 acre site
 - South of Walt Spence Pkwy in Niceville



UF REEF Adjacent Parcel

1. For the parcel above, which land use opportunities and/or synergies do you believe would be the highest and best use (i.e. office/research and development, industrial, retail, educational, etc.)?
2. What, if any, incompatible development issues do you believe exist with this parcel?



Walt Spence Pkwy Parcel

1. For the parcel above, which land use opportunities and/or synergies do you believe would be the highest and best use (i.e. office/research and development, industrial, retail, educational, etc.)?
2. What, if any, incompatible development issues do you believe exist with this parcel?

Workgroups Vector Check

- ▶ Co-Chairs
 - Community
 - Eglin AFB
 - Hurlburt Field
- ▶ Charter Review
- ▶ Focus Areas
- ▶ Participants

Closing Comments

► Way Ahead Schedule

TCPI*

- 12 December, 1500
- 23 January, 1500

CPP*

- 08 November, 1500
- 28 February, 1500



*Barring conflict, all meetings at
NWFSC, SSC, Room 302