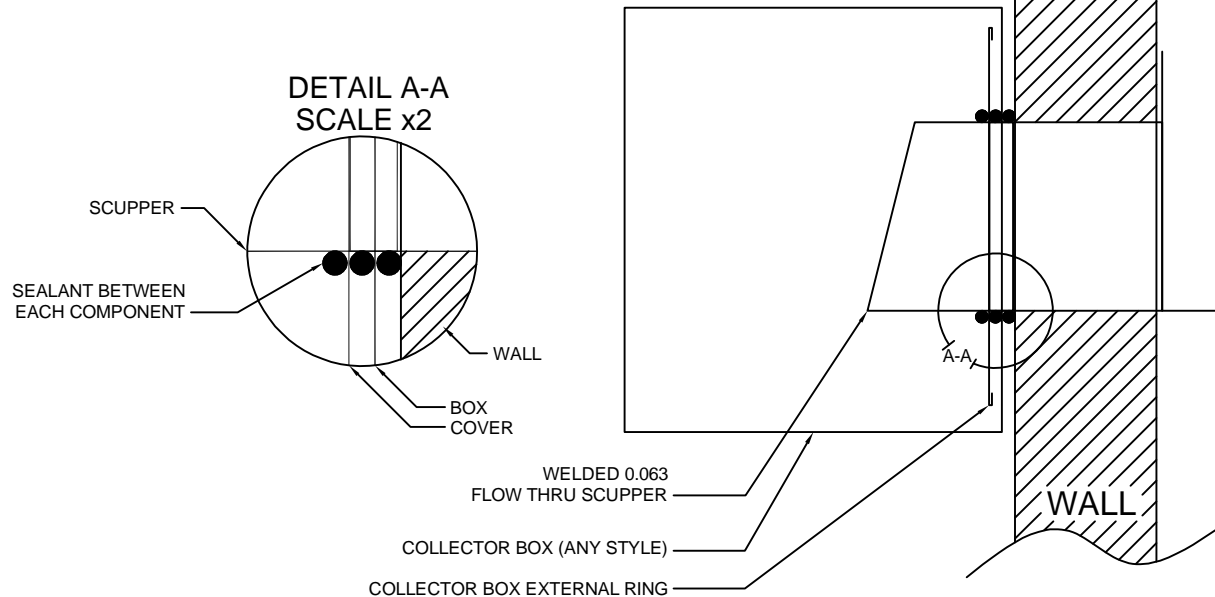


SCUPPER INSTALLATION

TEMPLE
Architectural Products

- STEP 1: INSTALL FLOW THROUGH SCUPPER.
STEP 2: APPLY A CONTINUOUS BEAD OF SEALANT AROUND SCUPPER ON OUTSIDE FACE OF WALL.
STEP 3: INSTALL THE COLLECTOR BOX.
STEP 4: SEAL THE SEAM BETWEEN THE SCUPPER SLEEVE AND THE BOX.
STEP 5: INSTALL THE COVER PLATE.
STEP 6: SEAL THE COVER PLATE AND SCUPPER SLEEVE WITH SEALANT.



MATERIAL (please choose one):

- ☐ 24 GA Steel ☐ .032 Aluminum
☐ 22 GA Steel ☐ .040 Aluminum

Other: _____
Color: _____
Finish: _____

Quantities:

_____ Total

Miter/End Cap additional information:

See the attached sheets for miters and end cap

24 ga colors for immediate ship:

- 1) Regal White
- 2) Medium Bronze
- 3) Dark Bronze

Other colors available upon request

Sheet _____ of _____

DWG# 770-012

Notes:

- 1) Written approval is required prior to fabrication, contractor is responsible for all dimensions and quantities. Fabricated items are not returnable.
- 2) Straps are to be installed at 24" O/C
- 3) Expansion joints and slip joints are available.
- 4) Miters are 12" long, per side (inside and outside)

Temple Architectural Products
1111 Lowell St.
Elyria, OH 44035

Phone: (216) 440-3595
Alternate: (440) 323-9393
Fax: (440) 412-7559

Project Name: _____

Installing Contractor: _____

Contact Name: _____

Contact number: _____

Signed Approval: _____