



Sport-Tek® Ladies PosiCharge® Electric Heather Colorblock 1/4-Zip Pullover. LST397



This lightweight pullover locks in color, wicks moisture, resists snags and has an amped up colorblock look.

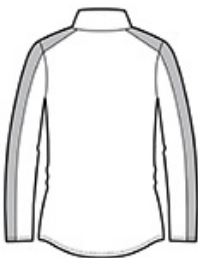
- 4.1-ounce, 100% polyester yarn-dyed jersey with PosiCharge technology (Electric Heather)
- 4.7-ounce, 100% polyester jersey with PosiCharge technology (solid)
- Gently contoured silhouette
- Removable tag for comfort and relabeling
- Cadet collar
- Reverse coil zipper
- Colorblock on shoulders and sleeves
- Princess seams
- Set-in sleeves
- Open cuffs and hem
- Drop tail hem

CARE INSTRUCTIONS

Machine wash cold with like colors. Do not bleach. Tumble dry low. Remove promptly. Cool iron if needed.do not use fabric softener. Do not dry clean.

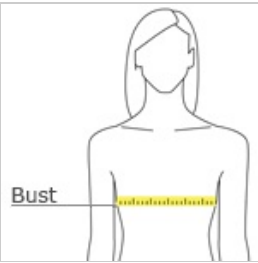


front



back

HOW TO MEASURE



BUST
With arms down at sides, measure around the upper body, under arms and around the fullest part of the bust.

SIZE CHART

| | XS | S | M | L | XL | 3XL | 4XL |
|------|-------|-------|-------|-------|-------|-------|-------|
| Size | 2 | 4/6 | 8/10 | 12/14 | 16/18 | 24/26 | 28/30 |
| Bust | 32-34 | 35-36 | 37-38 | 39-41 | 42-44 | 48-51 | 52-55 |

COLOR INFORMATION



Black Electric/
Black
PMS NTR BLACK
C



Deep Red
Electric/ Deep
Red
PMS 201C



Grey-Black
Electric/ Black
PMS NTR BLACK
C



True Navy
Electric/ True
Navy
PMS 533C



True Royal
Electric/ True
Royal
PMS 7686C



Sport-Tek® PosiCharge® Electric Heather Colorblock 1/4-Zip Pullover. ST397



This lightweight pullover locks in color, wicks moisture, resists snags and has an amped up colorblock look.

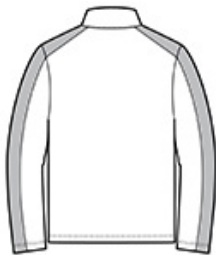
- 4.1-ounce, 100% polyester yarn-dyed jersey with PosiCharge technology (Electric Heather)
- 4.7-ounce, 100% polyester jersey with PosiCharge technology (solid)
- Removable tag for comfort and relabeling
- Cadet collar
- Reverse coil zipper
- Colorblock on shoulders and sleeves
- Set-in sleeves
- Open cuffs and hem

CARE INSTRUCTIONS

Machine wash cold with like colors. Do not bleach. Tumble dry low. Remove promptly. Cool iron if needed. Do not use fabric softener. Do not dry clean.

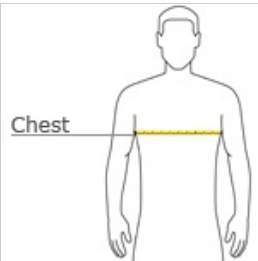


front



back

HOW TO MEASURE




CHEST
With arms down at sides, measure around the upper body, under arms and over the fullest part of the chest.

SIZE CHART

| | XS | S | M | L | XL | 2XL | 3XL | 4XL |
|-------|-------|-------|-------|-------|-------|-------|-------|-------|
| Chest | 32-34 | 35-37 | 38-40 | 41-43 | 44-46 | 47-49 | 50-53 | 54-57 |

COLOR INFORMATION




Black Electric/Black
PMS NTR BLACK C



Deep Red Electric/Deep Red
PMS 201C



Grey-Black Electric/Black
PMS NTR BLACK C



True Navy Electric/True Navy
PMS 533C



True Royal Electric/True Royal
PMS 7686c