

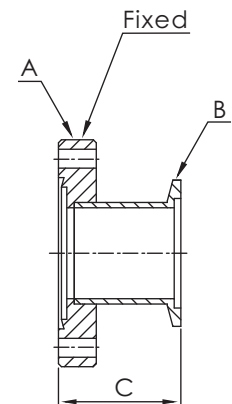
Adaptors

KF to CF FLANGE ADAPTORS

*Material: SS 304L



Part Number	Flange Size	A	B	C
AD-KF10xCF133	KF10/CF1.33(DN16)	CF1.33	KF 10	44.50
AD-KF16xCF133	KF16/CF1.33(DN16)	CF1.33	KF 16	44.50
AD-KF16xCF275	KF16/CF2.75(DN40)	CF2.75	KF 16	45.20
AD-KF25xCF212	KF25/CF2.12(DN25)	CF2.12	KF 25	44.50
AD-KF25xCF275	KF25/CF2.75(DN40)	CF2.75	KF 25	45.20
AD-KF40xCF275	KF40/CF2.75(DN40)	CF2.75	KF 40	45.20
AD-KF40xCF338	KF40/CF3.38(DN50)	CF3.38	KF 40	45.70
AD-KF50xCF133	KF50/CF1.33(DN16)	CF1.33	KF 50	49.50
AD-KF50xCF275	KF50/CF2.75(DN40)	CF2.75	KF 50	49.50
AD-KF50xCF338	KF50/CF3.38(DN50)	CF3.38	KF 50	45.70
AD-KF50xCF450	KF50/CF4.50(DN63)	CF4.50	KF 50	49.50

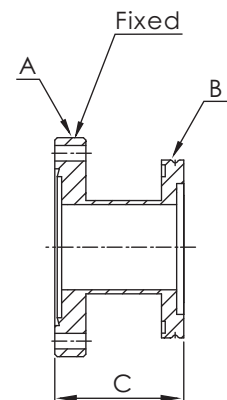


ISO to CF FLANGE ADAPTORS

*Material: SS 304L



Part Number	Flange Size	A	B	C
AD-ISO63xCF450	ISO63/CF4.50(DN63)	CF4.50	ISO63	110.00
AD-ISO80xCF462	ISO80/CF4.62(DN80)	CF4.62	ISO80	110.00
AD-ISO80xCF600	ISO80/CF6.00(DN100)	CF6.00	ISO80	110.00
AD-ISO100xCF600	ISO100/CF6.00(DN100)	CF6.00	ISO100	111.00
AD-ISO160xCF800	ISO160/CF8.00(DN160)	CF8.00	ISO160	113.00
AD-ISO200xCF1000	ISO200/CF10.00(DN200)	CF10.00	ISO200	113.00

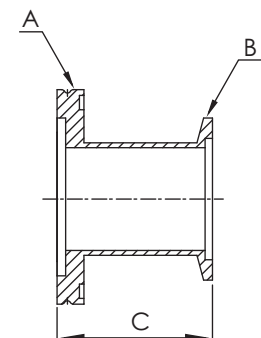


ISO to KF FLANGE ADAPTORS

*Material: SS 304L



Part Number	Flange Size	A	B	C
AD-ISO63xKF25	ISO63/KF25	ISO63	KF25	46.50
AD-ISO63xKF40	ISO63/KF40	ISO63	KF40	46.30
AD-ISO63xKF50	ISO63/KF50	ISO63	KF50	46.30
AD-ISO80xKF40	ISO80/KF40	ISO80	KF40	46.30
AD-ISO80xKF50	ISO80/KF50	ISO80	KF50	46.30
AD-ISO100xKF40	ISO100/KF40	ISO100	KF40	46.30
AD-ISO100xKF50	ISO100/KF50	ISO100	KF50	46.30



*Note: SS 316L Material Available on Request.

*Note: Polished and Electro- Polished Tube Finishes Available on Request.