

# Lauderdale Isles Civic Improvement Association, Inc.



## WHAT'S HAPPENING WITH THE YACHT CLUB PROPERTY?

For all new residents of Lauderdale Isles, in 1953, the Gill Construction Company created the Lauderdale Isles Development to include 700 new homes with a “Boat in Your Backyard” concept. In addition, a portion of the development was constructed as a yacht club with a club house, swimming pool, refreshment center, recreation pavilion and dock. All homeowners were to be members of the yacht club. During the years the Yacht Club was in operation, the community enjoyed it as a meeting place, polling location, waterway cleanup location, weekend hangout and a yacht club organization. In the good old days, the place was packed on the weekends, with the pool being the center of attraction, as very few homes had pools back then. It was a great neighborhood asset - you could spend all day there with the kids - swimming, barbecuing, playing tennis and, of course, enjoying a few cold ones at the busy bar inside.

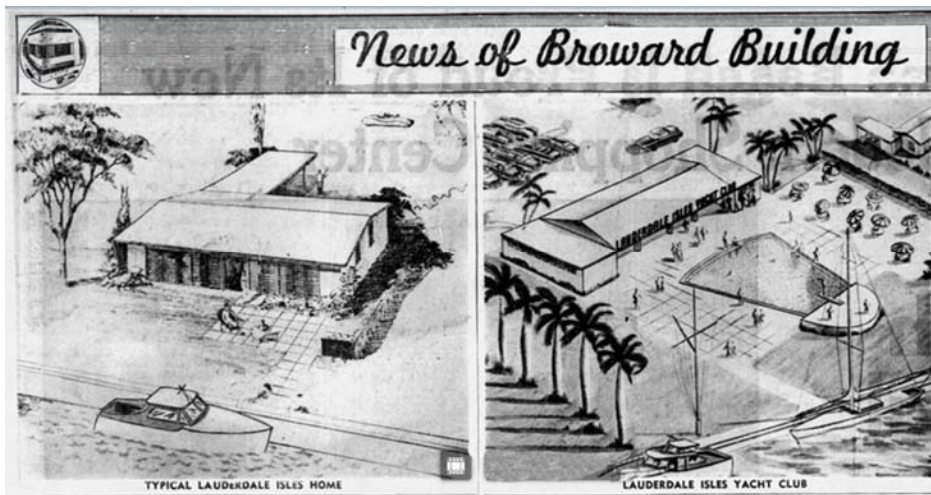
Without going into all the details, due to financial issues,

the Yacht Club was sold several times to private owners. Each time, the new owners were unsuccessful at maintaining a profitable business. Over the last several years, the yacht club has been vacant, leaving a void in the cohesiveness of the Lauderdale Isles Community.

Fast forward to 2023. At the request of your LICIA officers, our District 4 Commissioner Warren Sturman, was working with City Staff to purchase the property using parks bond funding that was earmarked for District 4. If the City had been successful with purchasing the property, a new community center/waterfront park combined with the adjacent Riverland Woods boat ramp was envisioned.

Find out the latest developments at the August 17 General Meeting.

**Just as this newsletter was going to press, we had very disheartening news: The yacht club property was sold on July 27th for \$2.25 million to a private buyer**



From the 1950's, a newspaper illustration for the planned development of Lauderdale Isles.

## AUGUST 17th GENERAL MEETING: 7pm at Grace Alone Church, 1900 SW 35 Ave.



**Featured Guest: Commissioner Warren Sturman**  
Our District 4 Commissioner will be covering any and all topics: The Yacht Club Property - Riverland Road Traffic - Edgewood Flooding - The new Water Plant - Snyder Park - Vacation Rentals - New River Middle School Traffic - The Grafitti Boat - New Police Station - DRV PINK Stadium - New City Hall - and more

**And also attending: City Manager Greg Chavarria**

This is your chance to meet the Commissioner & City Manager in person. Ask questions about any City issues you are interested in. Get accurate information - instead of the craziness you read on Nextdoor. General Meetings are open to all residents who live in Lauderdale Isles. We will also have reports by FLPD, Code Enhancement, and LICIA committees. There's a drawing for a Flanigan's Gift Card. Attend this meeting to find out the latest on what's happening in Lauderdale Isles & the City. **DON'T MISS IT!**

### INSIDE THIS ISSUE:

**The Birds and the Bees- Fishing Action in the Isles - The New Recycling - Landscaping is not Gardening**



Over the years, our Team has sold, listed or leased  
over **133** Lauderdale Isles homes.



*The Gordon Group*

SERVING BROWARD COUNTY FOR OVER 35 YEARS

We KNOW the area.  
We KNOW the homes.  
We KNOW the waterways.

**RE/MAX**  
Consultants Realty I

Jeannie DeRolf, Realtor 954-850-2447

Julie Gordon, Broker Associate 954-445-3345



***It's easier than ever to pay your association dues  
with three easy ways to pay***



**I WANT YOUR DUES!**

Drop your check in the mail, using the handy coupon on the back page of this newsletter



Pay using Zelle:  
Use email address  
[licia.treasurer@gmail.com](mailto:licia.treasurer@gmail.com)  
When remitting by Zelle,  
send a second email with  
your street address



**venmo**

Pay using venmo:  
Scan this QR code and  
send an email to  
[licia.treasurer@gmail.com](mailto:licia.treasurer@gmail.com)  
with your street address

Our fiscal year runs from November through October. If you haven't paid your annual dues for this fiscal year yet, it's time to send your \$20. Your contribution helps LICIA in our efforts to improve and protect our neighborhood. Why not take a minute right now to take care of it. By paying your dues, you'll be a Member in Good Standing, and you'll receive our emails of the *Isles Insider*.

**Are you a budding literary genius and just need somewhere to start your new writing career? Try crafting an article for the LICIA newsletter. Something of interest to the neighborhood, something about a party on your lane, anything to do with Lauderdale Isles. Send it to [laudisles@gmail.com](mailto:laudisles@gmail.com)**

Deadline for submission: 25th of month prior to publication.

Lauderdale Isles Civic Improvement Association, Inc., PO Box 121255, Fort Lauderdale, FL 33312

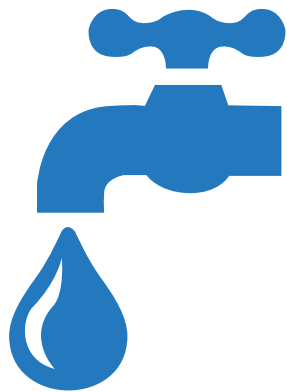


Advertising Rates: Our newsletter is published quarterly

	One Time	Half Year	Full Year
Full Page	\$125	238	450
Half Page	90	171	342
Qtr Page	60	114	216
Bus. Card	35	67	126

Make checks payable to LICIA & send to our PO Box address prior to publication. The deadline for submission is the 25th of the month prior to publication. Newsletter is published quarterly in Feb, May, Aug, & Nov. Must be paid in full to receive discount. Ad must be ready-to-go as jpg or pdf. Members in good standing (paid dues) are allowed a free, two-line ad per person for personal property, subject to space availability.

# YOUR LAUDERDALE ISLES NEIGHBOR & PLUMBER



CFC1429652

**RD PLUMBING**  
& SEWER, INC.

A FULL SERVICE & REPAIR COMPANY

EXPERIENCED  
PROFESSIONAL  
QUALITY  
GUARANTEED!

**FREE  
ESTIMATES**

**CONTACT US TODAY!**

**954-707-9594**

[www.rdplumber.com](http://www.rdplumber.com)



## President's Musings



By Earl Prizlee

President, Lauderdale Isles Civic Improvement Assn.

I hope you all are enjoying your summer and of course are prepared as usual for the hurricane season. I would just like to share a few notes about where we are with our beloved Lauderdale Isles Neighborhood. While some of you have not attended our very informative quarterly general meetings, I hope you are able to stay informed by our printed and hand delivered newsletters prepared by our editor, Geoff Rames. These newsletters are funded by your dues and the advertisers. .

As a result of the Executive Team, Lane Reps and committee members, this Association is working diligently with city staff and our District Commissioner to combat the vacation rental issue. And, through our efforts, we can claim victory over the airport noise with the advent of the FAA's Metroplex program; think "RNAV."

As we approach this fall, I would like to say how absolutely excited I am to announce that after many months of effort by the Board and myself, we are making progress with the City of Fort Lauderdale working to acquire the former yacht club property on Whale Harbor Lane. We hope that this comes together soon.

With that being said, a few items the Board is still working on include a new neighborhood sign, lighting the existing lane signs, holiday decorations, New River Middle School traffic issues, waterway cleanup event, and boat ramp maintenance. However, as we move forward and to be successful, we depend heavily on volunteers and your continued membership support. I believe 2023 will be one of the most significant changes to our community.

*Stay tuned!*

## Riverland Woods - Marco's on it!



By Diana Steeger

Senior Staff Correspondent

It's no secret that LICIA has developed very strong relationships with the City of Fort Lauderdale's various departments and staff. This is especially true with Community Enhancement Inspector Marco Aguilera, who during his regular duties also keeps a close eye on Riverland Woods Park.

Early in the morning of July 18<sup>th</sup>, Marco advised Geoff Rames, VP of LICIA, of damage that occurred the previous evening at Riverland Woods. Vehicles had torn up the turf extensively and had demolished the entry sign. The following morning, Marco advised that the culprit again was at the park during the night, spinning donuts in the boat ramp apron. Geoff alerted Lt. Guerra of FLPD, who notified officers on the evening and overnite shifts to keep a close eye on the park. Marco notified Parks & Rec and they are working on repairing the damage.

It's great how Marco goes out of his way to help our neighborhood whenever he can. **Thank you, Marco!**



Turf torn up



Demolished sign



Donuts on the ramp apron

# Now Open!

## THE GROUNDS GUYS OF FORT LAUDERDALE

- General Yard Maintenance
- Yard Clean-Up
- Mulch Installation
- Sod Installation
- Landscape Lighting
- Holiday Lighting

**954-757-6069**

www.groundsguys.com

**We're Local to the Isles!**

**\*\*Special Rates for Lauderdale Isles & Riverland Area**

**Free Cut!\***

954.757.6069  
GroundsGuys.com  
Neighborly.com

the Grounds Guys  
a neighborly company

neighborly  
your hub for home and commercial services



## A Purposeful Garden



By Dawn Hanna  
Senior Staff Writer

I had the honor of interviewing my neighbor, Debra Elliott, about her unique perspective on gardening. She has been a resident of Lauderdale Isles for 5 years and she planned her garden on Whale Harbor Lane very purposefully. Debra's goal is to build an ecosystem

that is self-sustaining. She is 5 years into the project and is close to her goal. She hopes the planning pays off by having a balanced garden that requires less care.

The first task was to remove plants that were inconsistent with the ecosystem goal. Debra spent a significant amount of resources removing overgrown plants, stumps, and invasive plants.

The next step was to focus on native plants. Debra's garden is 70% native. Native plants are more resilient and require less care. She suggests using local nurseries like Florida Nursery Mart or Jessie Durko's Nursery rather than going to Lowe's, where the plants are raised in a greenhouse and less likely to thrive in the natural elements. Although local nurseries also sell exotics, you can ask to be directed to the native sections.

The plan also includes serving as a wildlife habitat. "Sustainably providing essential elements of a wildlife habitat: food, water, cover, and places to raise young." The garden also feeds humans with a variety of potted herbs and a banana tree. Debra chooses host plants to attract a variety of wildlife. Here are some examples of her host plant choices:

**Coontie:** North America's only native cycad, is the host plant for the Atala butterfly.

**Giant milkweed:** host plant for Monarch butterflies

**Barbados Cherry Tree:** provides fruit for Orioles to eat.

**Fakahatchee Grass:** attracts dragonflies (that eat mosquitos)

Debra's garden also embraces our roots in Lauderdale Isles. Her water feature in the front yard is a beautiful 1960s



1960s Seahorse bird bath



Coontie plants were popular landscape in the 1950s and 1960s

Seahorse bird bath.

Another mid-century plant reference is the Coontie. Debra shared a story about how the Atala butterfly almost faced extinction because its host plant, the Coontie, very popular for landscaping in the 1960's, fell out of favor. Debra has included this popular mid-century plant in her garden to not only attract the Atala, but also give a nod to our historic roots.

Speaking of landscaping, Debra says that landscaping is not gardening. However, her garden has room for aesthetics. She explained that a garden is more enjoyable as it appeals to many of our senses. She has considered elements beyond color and shape: fragrance from plants, sounds of water, sounds and movement from wind through trees.

Debra can be found humming in her garden hand watering or hand weeding in her front yard. She is a valuable source of plant knowledge and is happy to share information and gardening guidance. She wanted to add this thought, "I hope that the concept of purposeful gardening catches on here in Lauderdale Isles. We are losing so much natural habitat to urban development! Backyard (or front yard) gardeners can make a difference by creating sustaining corridors amidst the concrete."



The front yard

## LAUDERDALE ISLES ACTION SPOTTER



By Julie Gordon  
Sportfishing Columnist

Living on the water is a privilege that many do not get to encounter. We are so fortunate to live on a waterway that is a mixture of fresh and salt water. If we travel a little further to the west down the New River canal into Plantation, we encounter the influx of fresh water being fed in from the Everglades. When we journey eastward toward downtown and eventually out to Port Everglades, we encounter saltwater being fed in from the ocean. Where we live is a unique mixture of the two ecosystems often bringing species from both environments. This section of our newsletter will focus on you, our residents, spotting and/or fishing for different species in our waterways.

I have lived here for over 21 years and have seen many different fish in our canals. One of the most fascinating that I experienced, was the run of jacks last summer. The sound was so incredible, we could hear it from inside our home. We ran outside to see what all the commotion in the water was. There were hundreds of

Jack Crevalle traveling down our canal like a stampede. Naturally, my oldest son immediately ran to grab his fishing pole. Sure enough, in the chaos and excitement, he was able to catch one. We watched the school of Jack erratically travel all the way down to the dead end of our canal, turn around and travel back out. It was loud, there was a lot of splashing, and lots of silver flashes zooming by in the water. The experience was incredible.



Jack Crevalle caught and released safely on the Bluefish canal on August 28, 2022. Angler preferred to have his identity concealed.

*We welcome your fishing and spotting photos and stories for publication in our newsletter. Send photos to: [juliegordonrealtor@gmail.com](mailto:juliegordonrealtor@gmail.com) Include names of people pictured, location of picture, any key details describing what is pictured, size, weight, date, etc. Remember to abide by the fishing regulations. We support humane catch and release. Not all photos will be featured.*



# The Saga of the Gallant Lady aka the Graffiti Boat



By Joann Kratky  
LICIA Waterways Correspondent

In mid-March, the 87 foot yacht, the Gallant Lady, was spray painted from stern to stem with messages from what is believed to be a disgruntled former tenant. The vessel's dockage address is 3640-3650 State Road 84 in the Town of Davie. It is on the New River across from the mouth of the Marlin Canal and can be seen by residents in Lauderdale Isles and anyone navigating on the New River. It sat abandoned, without power, and started to take on water and then began to sink the first week of June. The fuel and oil on board began leaking into the waterways. Numerous residents of Fort Lauderdale called multiple entities, Town of Davie, Florida Fish and Wildlife Conservation Commission, Coast Guard, Environmental Protection Agency and even the Fire Department.

I had contacted Channel 10 reporter Roy Ramos at the end of May, with concern that the boat would soon be allowing the chemicals on board to escape into our waters. He came out to take a look and I took him to the point of Nassau Lane to give him a view of the vessel, as well as to show him past pictures for comparison.

The FWC (case # FWC23ON0042411) placed a violation notice on the side of the vessel and the EPA finally came out with containment booms to surround the boat on June 11<sup>th</sup>. The containment booms did not work and the chemicals continued to pollute the waterways. I followed up with Roy Ramos on June 11<sup>th</sup>. He con-

tacted the Town of Davie, the FWC and the EPA as well as the owner of the property, Howard Rosenberg. The owner of the boat, Kenneth Wright, lives in Louisiana and stopped paying dockage fees last August and has filed bankruptcy. Roy Ramos contacted Mr. Wright's attorneys but, to date, they have not returned his calls. Roy came out on June 14<sup>th</sup> to video the story while the EPA was on site pumping out what fuel and oil remained on the boat. Below is a link to the his segment that aired on Channel 10:

[https://nextdoor.com/p/NRnzzBQBH58C?utm\\_source=share&utm\\_content=static\\_email\\_share&extras=NTk0NDI3](https://nextdoor.com/p/NRnzzBQBH58C?utm_source=share&utm_content=static_email_share&extras=NTk0NDI3)

The other agencies that were contacted, the Coast Guard, Town of Davie, and the EPA, have all confirmed that the FWC is the lead agency handling this case. The FWC officers managing the case are Officer Favrot and Peppel. They informed me that there is a 3-week waiting period that FWC is obligated by law (due process) to give dock owner/ vessel owner to remedy the situation on their own before the agency can take action. The waiting period expired the beginning of July. They gave me the contact information for the FWC Public Relations Officer who has not yet responded to my emails requesting an official statement. Shortly after this expiration the vessel began taking on water once again. By July 15<sup>th</sup> the boat was listing badly. Only the dock lines to a couple of leaning pilings are preventing it from rolling into the middle of the channel - a total disaster waiting to happen. As of press time for this newsletter, the boat remains sunk and leaning. The FWC is a state agency, tasked with removing this vessel. **Want to contact someone about it?**

Environmental crew pumping out diesel fuel



FWC Regional Director:  
Thomas Reinert 561-625-5122  
Tom.Reinert@myfwc.com

State Senator Jason Pizzo  
pizzo.jason.web@flsenate.gov

State Representative Daryl Campbell  
Daryl.Campbell@myfloridahouse.gov

## Livin' Large in the Isles

We have some wonderful views in Lauderdale Isles.

Staff Photojournalist Dick Cahoon got this shot of a rainbow recently from his backyard.



## The BAN THEM NOW Signs

These signs are still available for free from LICIA. Send an email to :

[laudisles@gmail.com](mailto:laudisles@gmail.com)  
and we'll drop one off for you.

Let the owners of vacation rentals know this is your neighborhood, not theirs.





# AIRPORT NOISE UPDATE



By Dick Cahoon & Geoff Rames  
LICIA Airport Noise Committee

Lauderdale Isles is usually not affected by airport noise because planes depart into the wind, which is from the east about 80% of the time. Planes also land into the wind, and landings from the west rarely cause troublesome noise for us. Sometimes people suddenly notice airport noise because there are storms or turbulence to the west, so air traffic controllers will divert planes to the north, which can suddenly increase neighborhood noise temporarily. People will also notice more noise when departures are directed to the west, due to the 12-20% of the time winds are from the west.

Before the South Runway was built in 2014, west departures usually did not produce objectionable noise because they generally flew due west and did not get close to homes in the Isles. When the new runway was put into operation, the FAA decided to fly west departures to the north and fly near or even directly over our homes in Lauderdale Isles. The LICIA Airport Noise Committee worked for 8 years to fight the FAA and make sure planes do not fly over our homes except during an emergency or weather

event. This is the first time the FAA has relented to pressure without neighbors having to go to court. We worked with Commissioner Ben Sorensen who convinced the City to hire lawyers and consultants to “persuade” the FAA to make changes to the Metroplex Plan instituted in August, 2022. These changes have greatly reduced airport noise.

Now, west departing jets travel farther west before turning slightly north. That means planes stay south of 595 until past Lauderdale Isles when on “RNAV.” Before Metroplex, planes would turn too soon and get close to or even fly over our homes.

Occasionally, noise from a plane seems louder, and this can be due to winds blowing the noise toward us, or it’s an older or louder plane. It can also be due to the fact that planes have been flying to the east for some time, and suddenly we hear them again when we are not used to it. Before these changes, Lauderdale Isles filed more airport noise complaints than any other neighborhood. Now, complaints are rare.

The above comments apply only to jet planes. Although prop planes still fly overhead, the FAA is now working on new procedures in order to reduce noise from them as well, in response to requests from our Airport Noise Committee. As the FAA continues to fine tune the Metroplex program, our committee will continue to attend Broward County Airport Noise Abatement Committee meetings to ensure that Metroplex procedures are followed to keep noise from west departures affecting us to a minimum.

Residents can follow the flight path of individual planes using the the FLL WebTrak system, [webtrak.emsbk.com/fll1](http://webtrak.emsbk.com/fll1). To understand the capabilities of the system, read the Start Here, Legend, and Help tabs by clicking the upper corner of the webtrak website.



Call today for a  
Free Market Analysis  
of you Home



Charles Rutenberg Realty Fort Lauderdale  
The Smart Brokers



Jackie Zumwalt Realtor ABR, GRI  
(954) 330-5621

JackieZRealtor@gmail.com

www.BrowardCountyTopAgent.com



Your neighborhood is my neighborhood

# Composting, The New Recycling!

By Diana Steeger



My husband and I were at a farmer's market and came across a vendor offering community composting services. After getting a brief introduction of how the process works and how impactful it can be for the environment, we decided to sign up for their monthly collection services. Not only have we reduced our garbage waste to almost no garbage on the 2<sup>nd</sup> collection day of the week, but our recycling waste has also reduced, as well. After about a year of contributing, I started to get intrigued by how the process works.

What is composting? Composting is the natural process of recycling organic matter, such as leaves and food scraps (please see picture), into a fertilizer that can enrich soil and plants. Anything that grows decomposes eventually; composting simply speeds up the process by providing an ideal environment for bacteria, fungi, and other [decomposing organisms](#) (such as worms, sowbugs, and nematodes) to do their work. The resulting decomposed matter, which often ends up looking like fertile garden soil, is called compost. Fondly referred to by farmers as "black gold," compost is rich in nutrients and can be used for gardening, horticulture, and agriculture.

The type of composting you choose can vary, depending on how you live. It can be done indoors or outdoors. The availability of space, how much and what kind of organic waste you produce and the amount of time you can spend on it are all deciding factors on



Typical composting setup

how you want to compost.

There are two main types of composting – cold and hot (also referred to as passive and active). Cold composting breaks down organic matter at a slow rate but allows the least amount of effort to maintain. Depending on the type of passive process chosen, in about 1-2 years, you will end up with a usable compost. Hot composting is a managed and faster process that must maintain balance. This requires keeping both carbon and nitrogen at the proper ratios to decompose the organic waste. With the right balance of air and water, under ideal conditions, you could have final compost within months.

Composting consists of four key elements – carbon, nitrogen, air and water. By using the right amount of carbon and nitrogen ratios of 2 to 4 parts carbon for every 1-part nitrogen and allowing the right amounts of air and water will yield the best product. When adding carbon, think "browns", such as dead leaves, branches, paper, cardboard. Need nitrogen, think "greens". Everything from fresh cut grass, food scraps (no meat, oils, only veggies and fruit with no condiments or sauces), coffee grounds, eggshells provide the nitrogen needed for decomposers to grow inside of the pile. Oxygen and water ensure the decomposers in the pile survive. By layering the browns and greens, keeping the pile moist like a damp sponge, and rotating weekly, you will provide the optimal environment for optimal compost.

I hope this brief introduction into composting was as useful to you, as it was for me. Part 2 of this article will continue in the next edition of our newsletter, however any comments, suggestions feel free to email me at [laudisles@gmail.com](mailto:laudisles@gmail.com).



## ORIOLES IN THE ISLES

By Dick Cahoon  
Staff Ornithologist



Early this summer I started seeing for the first time what I believe are Baltimore Orioles, but may be another variety of Orioles, such as Spotted or Hooded or Altamira Orioles.

They are beautiful, lively birds that sing with a distinctive, pleasant-sounding chirp, and occasional muttering communiques while dining on the tiny nut-like fruit of our large Black Olive tree.

I thought these beautiful Baltimore Oriole Songbirds were trying to eat the fruit when they occupied our mango trees. While I was looking closely to see which mangos were ripening and turning mango color, I realized some of what I thought were mangos were staring back at me and turned out to be baby Oriole chicks.

They were hiding and waiting to be fed in my mango trees. They were only 5 feet off the ground and I feared the neighborhood cats would get them as "low hanging fruit".



Baltimore Orioles chirping away



A couple of chicks hidden in the mango tree



## I hate Skeeters . . . but we need to save the BEES



By Dick Cahoon  
Staff Apiologist

Some people have suggested pesticide spraying to get rid of the mosquito nuisance, but we need to save the BEES. Pesticides also kill beneficial insects, such as bees and ladybugs. They pollinate plants, control pests, and support the food chain. **We're losing bees at ALARMING rates** - over 700 types of North American bees are currently at risk of EXTINCTION. Your table would look BARE without bees and almonds wouldn't even exist without bees!



Lauderdale Isles Resident Bee Keeper Joanna Dee, <https://welopeourbees.com/>, says, "Every third mouthful you take is thanks to their hard work. Without the honey bees and other pollinators, our food crops would dwindle – here in Florida, they are essential for our avocados, mangoes and fruit trees, to name a few."

To protect against mosquitoes, The Center for Disease Control and Prevention recommends [lemon eucalyptus](#) oil as an active ingredient in insect repellents. It has naturally high amounts of the compound citronellal, which repels bugs.

According to Joanna, Mosquito sprays (not just the ones used by the cities, but the ones people buy from the pharmacy or store) can kill bees on contact. The big trucks that spray for mosquitoes cover grass, clover, flowers, trees – anything the bees might

need for their survival. Even using a landscaper or lawn service that treats the lawn – THEY often spray the grass with toxins and that alone is enough to make bees very ill or kill them. When home owners decide to spray their flowers or fruit with insecticides, forager bees take toxic nectar and pollen home to the hive where it may kill some or all of those bees.

I called the City of Ft. Lauderdale and was connected to Broward County's 311 helpline. According to Dagne DuGuma, manager of the County Mosquito Control Program, anyone concerned about mosquitoes can call 311 & file a request for a representative to respond to you. They rely on individual property assessment for a targeted plan that includes elimination of sources and possible application of larvicide on the property and adjacent storm drains or granular product at the home. The county will spray a property for mosquitoes only as a last resort, and only after midnight when bees are asleep, and considers spraying a whole street overkill, since the range of most mosquitos is only 300 feet. Bromeliads are the major source of mosquitoes, along with waste tires and other containers of standing water.

Joanna ([welopeourbees@gmail.com](mailto:welopeourbees@gmail.com)) recommends minimizing the dangers associated with chemicals by considering alternatives such as reducing the breeding sites of mosquitoes by removing standing water around homes, such as in gutters, buckets, and tires, along with using essential oils as a safe and natural alternative, and biological control.

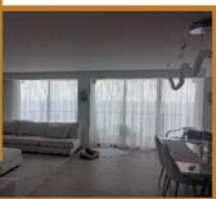
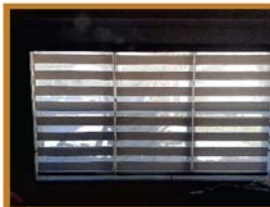
Joanna also says, "If you or someone you know does need bee removal (sometimes there is no way around it), insist on LIVE removals instead of extermination. I personally recommend Brian Schafer (954) 612 3662." If you notice a bee honeycomb up high where bees are not bothering anyone, just leave them "bee" !

# Florida Design & Associates

## Custom Window Treatments



- Commercial & Residential • Motorized Blinds
- Plantation Shutters
- Pleated Shades
- Wood Blinds
- Cornices



"Florida Natives and  
Lauderdale Isles Residents"

### 25 Years

*Family Owned & Operated*

**License & Insured**

Serving South Beach...to Palm Beach

# 954-274-7873

[www.FloridaDesignServices.com](http://www.FloridaDesignServices.com)

## Monarchs and Milkweed

By Robyn Allemand

Did you know that the Monarch Butterfly only has one host plant? That means there is only one plant that they can lay their eggs and the caterpillars will eat. Monarch butterflies were put on the endangered list in 2022 as their population declined at a massive rate. Here is what you can do to help the Monarch population and enjoy the sight of butterflies around your garden every day.

Plant Milkweed. Although there are over 70 varieties of the plant, the most common to our area of South Florida are the Swamp Milkweed and the Tropical Milkweed. We bought a bunch of Tropical Milkweed plants at our local nursery along with other plants that would provide food for the butterflies. Some main butterfly plants are Angelonia, Porterweed, Salvia and Lantana. There are also seed packet varieties if you are okay waiting a while for the seeds to grow. If you want a flowering plant that grows quickly, look for New Gold Lantana – it has quickly dug its roots into our garden, and if not for pruning would easily try to take over. I highly recommend adding some ‘Meteor Shower’ *Verbena Bonariensis* to your garden as the butterflies have a tendency to linger on them, allowing for great photo opportunities. Brazilian Gomphrena are said to do the same thing, but we have had more luck with the Meteor Shower.

A few things we learned when beginning our butterfly garden: Try to either plant your new plants in the ground or repot them



quickly after taking them home. Expect your Milkweed plants to look like a bunch of green sticks after successfully populating them with caterpillars – They call it the hungry hungry caterpillar for a reason... But don't worry, your Milkweed plants will grow back again with full leaves given some time. Getting a few too many aphids crawling on your plants? Ladybugs are their natural predator and sold at your local nurseries – buy a batch and release them by your plants in the evening or morning. Most of the plants that caterpillars and butterflies go to enjoy partial to full sun and can be toxic if ingested, so keep any animal or child away if they have a tendency to eat foliage. We did not have any trouble attracting Monarch Butterflies to our garden, but if you are a little worried, you can look for Milkweed plants at your local nursery that already have some caterpillars residing on them.

## Staffers Move Along

### City Staff Changes

Three city staff members who worked very closely with LICIA and LIWMD recently left the City to new positions elsewhere.

#### Ryan Thomas

Ryan Thomas was originally hired by Commissioner Ben Sorensen and continued on as Chief of Staff with Commissioner Warren Sturman. Ryan always went above and beyond to help us with all the little - and big - issues that popped up. He moved to Alpharetta, Georgia, to serve as right hand man to City Manager Chris Lagerbloom (former Ft. Lauderdale City Mgr). Jeri Pryor has taken over for Ryan in the Commissioner's office.

#### Manny Garcia

Manny was a great asset for our neighborhood and the City, where he served as Senior Code Inspector for several years. He was instrumental in getting the Code Compliance Boat program started and captained that boat. He is now with the Broward County Aviation Department.

#### Larry Teich

Larry Teich, as the City's Environmental Services Manager, served as the City Liaison for the Lauderdale Isles Water Management District since the neighborhood was annexed into the City in 2002. He made sure we complied with the myriad of rules applicable to Special Districts and kept us on the straight and narrow. You may recall his presentation at a General Meeting several years ago as being one of the most informative presentations ever. Larry is now with the City of Pompano Beach.

Ryan, Manny, & Larry will be missed by Lauderdale Isles. We wish them all the best in their new positions!

## Riverland Woods Boat Ramp

Lauderdale Isles has a vested interest in the Riverland Woods Boat Ramp, as it actually came to be due to the efforts of several Isles residents, led by Joan Sheridan. She managed to convince the property owner to do a land swap with the County, which prevented the property from being developed for industrial use. So we feel that Riverland Woods is “our” boat ramp.

It's turning out that our boat ramp has become the busiest one of the four ramps in the City. On May 28th, there were FIFTY cars with trailers parked there, and four more waiting to use the ramp. Although the signs say “No Parking on the Grass,” the Parks Dept looks the other way on weekends when the park is so busy. And since this overflow parking only occurs on weekends, the grass really isn't damaged.

At our request, Parks and Rec recently repaired the potholes in the ramp, and fixed the lighting. We almost ended up with 90 new trees in the park, thru a grant the City obtained from the US Forest Service. But the planting of all those trees was planned for right along the road, which would have eliminated all the overflow parking spots used on weekends. So LICIA asked Parks and Rec to postpone this tree project until a master plan for the parking and trees can be developed.

In the meantime, there are some problems late at night in Riverland Woods, as you read in another article in this issue. FLPD is stepping up patrols by its evening and late night shift officers to combat the trouble makers going in there. Of course, the last thing we want is a gate installed on that park, making it very difficult for boaters returning there at night. We need to keep an eye on “our” boat ramp. If you see something happening there that's not right, please call FLPD.

May 28 - Fifty vehicles with trailers parked at Riverland Woods





## Vacation Rentals in Lauderdale Isles - Hot or Not?



By Aynsley Geramanis  
Staff Writer

If you've been in Ft. Lauderdale long enough, there's a good chance you've had an experience living near a Vacation Rental. Whether that experience has been good or bad, is in the eyes (and ears) of the beholder .

Some of the Isles seem to have a Vacation Rental at every other house, while others seem to have none. So, are Vacation Rentals in our neighborhood Hot? Or not?

Vacations Rentals (I'll call them VR's for short) saw a major rise during the Pandemic. Americans were working and schooling from home, trapped with travel restrictions and seeing a historic low in interest rates towards the end of 2020/ beginning of 2021. These attractive factors drove investors to purchase more second homes than before. By October 2020, second home demand was up by almost 100% compared to the previous year.

To offset the cost , buyers were taking advantage of the large VR boom that was happening and renting their homes out. We saw nightly averages in the Isles up to \$1000! More people jumped on the bandwagon and the neighborhood became oversaturated with VR'S. This in turn, drove the nightly averages and occupancy rate way down. It didn't make sense anymore to purchase these expensive homes and expect to make a profit. Compound that with the



possibility of a VR certificate suspension if you received 3 violations from the City, the juice really isn't worth the squeeze.

As of July 7, 2023, there are 22 REGISTERED vacation rentals in Lauderdale Isles. If that number seems low to you, you're probably correct because many owners/ management companies choose not to properly apply for their Vacation Rental certificates.

The main reasons VR owners are being denied their certificates are open building and community enhancement code cases. Once a certificate is approved, if the property gets "3 strikes" then their certificate can be suspended for up to 180 days. The strikes come in the form of neighbor complaints or proactive findings by code enforcement officers. The biggest offenders are noise, parking and over-occupancy (too many guests). Over 50% of the registered Vacation Rentals properties in Lauderdale Isles are now either for sale or being offered as yearly rentals.

*Is it a sign of the times that the Vacation Rental boom in our neighborhood is up?*



Improper handling of solid waste is another common vacation rental violation, in addition to parking on the lawn, noise, and over-occupancy violations. Three violations and the owner goes before the Special Magistrate for a 180 day suspension of their operating certificate. Faced with going six months without revenue, VR owners often opt to sell or go with a long term rental.



Real-ativity

# Thinking of Selling?

From one neighbor to another,  
let me help you get the best price for your house.

If you're looking to buy, sell, have questions about real estate or your home value, I would love to assist you. Call to learn about my **complimentary offerings** when you list with me. My goal is make real estate stress free

for you!

Charlotte Schou

Duck Key Resident

(858) 230-0715 [charlotte.mk.schou@gmail.com](mailto:charlotte.mk.schou@gmail.com)



## THE REFRIGERATOR LIST

Updated August 2023

### LICIA BOARD OF DIRECTORS 2022-2023

#### Executive Board

President:	Earl Prizlee	954-579-8465
Vice-President	Geoff Rames	954-327-9095
Secretary:	Deborah Dedek	954-257-1125
Treasurer:	Diana Steeger	305-282-2048

#### Board of Directors

Andros	Trent Simpson	314-495-8722
Bimini	Aynsley Geramanis	954-604-0014
Cat Cay	Dick Cahoon	954-997-2591
Duck Key	<i>Open</i>	
Flamingo	Penny Shea	754-581-6572
Gulfstream	Geoff Rames	954-327-9095
Key Largo	Jackie Zumwalt	954-330-5621
Marathon	Julie Gordon	954-445-3345
Nassau	Joann Kratky	954-683-1320
Okeechobee	Deborah Dedek	954-257-1125
Sugarloaf	Savita Baboolal	954-708-5488
Tortugas	Karen Rames	954-327-9095
Whale Harbor	Dawn Hanna	954-873-1925

Newsletter Editor: Geoff Rames: [grames.licia@gmail.com](mailto:grames.licia@gmail.com)

Webmaster: Dawn Hanna: [mmex99@yahoo.com](mailto:mmex99@yahoo.com)

LICIA EMAIL: [laudisles@gmail.com](mailto:laudisles@gmail.com)

### HELPFUL PHONE NUMBERS

Fort Lauderdale Police Non-Emergency	954-764-HELP
Fort Lauderdale Customer Svc. (24 hrs) <i>including Water/Sewer/Trash/Canal Cleaning</i>	954-828-8000
<b>Airport Noise Complaints *</b>	<b>954-359-2366</b>
City Hall	954-828-5004
Building Department	954-828-5191
Code Enforcement	954-828-5207
Commissioner Warren Sturman	954-828-5930
Animal Control (Broward County)	954-359-1313
Comcast <i>Good luck!</i>	800-266-2278
<b>Nuisance Alligators: FWC</b>	<b>866-392-4286</b>
Crimestoppers	954-493-TIPS
Mosquito Control (Broward County)	954-765-4062
FPL Power Outages	800-4OUTAGE

**\* File Airport Noise Complaints easily with the smart phone app found at:**  
<https://www.broward.org/Airport/Business/NoiseInformation/>

### PICKUP SCHEDULE for LAUDERDALE ISLES

Weekly Trash Pickup (black cart):	Tuesday & Friday
Weekly Recycling Pickup (blue cart):	Tuesday
Weekly Yard Waste Pickup (green cart):	Friday
Monthly Bulk Trash Pickup:	First Wednesday

**For more info: [www.fortlauderdale.gov/pickup](http://www.fortlauderdale.gov/pickup)**

### WATERWAY ISSUES - Who to call:

- **Alligators (& Crocodiles) Problems**  
FWC Nuisance Alligators: 1-866-FWC-GATOR
- **Pollution/ Oil Spills** within the City of Fort Lauderdale:  
7:30 –5:00 Ft. Laud. Customer Service:954-828-8000  
Evenings/Weekends: FLPD 954-764-HELP
- **Pollution Complaints** outside the City of Ft. Lauderdale:  
County Environmental 24 hrs: 954-519-1499
- **Large Debris/Dead Animals in the water:**  
Ft. Laud. Customer Service 954-828-8000
- **Injured Manatees**  
FWC: 1-888-404-FWCC
- **Sinking or Sunk Boats**  
24 Hour Customer Service 954-828-8000
- **Unightly or Derelict Boats/ Boats too wide for canal:**  
Ft. Laud. Code Enforcement: 954-828-5207
- **Lawn Service Firms disposing debris in canal:**  
FLPD 954-764-HELP
- **Illegal Dock Construction/Pilings/Dredging**  
Code Enforcement: 954-828-5207

### LIWMD UPDATE ALGAE... ANY DAY NOW??

Back in September of 2018, one morning it just appeared in the canals: an algal bloom. The water temperature was high and there were plenty of nutrients in the water. That bloom lasted for about a month, until the water temperature started to drop.

With this summer's incredibly high temperatures, the water temp in August is already super high. On July 20th, testing in the Plantation Isles Canal west of us indicated the presence of algae, although no algal bloom was observed. So it's quite possible we're going to see algae in our canals this summer.

Unfortunately, despite the best efforts of the Florida DEP's Algae Task Force, there still isn't a solution for clearing an algal bloom once it occurs. Not all blue-green algae is toxic, but if we do have a bloom, it's best to avoid contact with it just to play it safe. The City's Environmental Services Dept. monitors the City canals and when an algal bloom is found, DEP is notified and they respond

to conduct testing.

Neighbors can do their part to help limit nutrients in the canals: no fertilizer use, not blowing lawn debris into the canals, and picking up pest waste. Pray for rain to keep flushing the canals, too.

And keep your fingers crossed.....

*Geoff Rames, Chairman*



LAUDERDALE ISLES  
WATER MANAGEMENT  
DISTRICT  
[www.liwmd.org](http://www.liwmd.org)



### MEMBER DUES for Nov. 2022 – Oct. 2023: BE A MEMBER IN GOOD STANDING

Dues are only \$20 per year. Mail to: LICIA, PO Box 121255, Fort Lauderdale, FL 33312

*Please return this portion with your check*

Name: \_\_\_\_\_  
Address: \_\_\_\_\_  
Email: \_\_\_\_\_

**The next LICIA General Meeting is August 17th. Put it on your calendar**