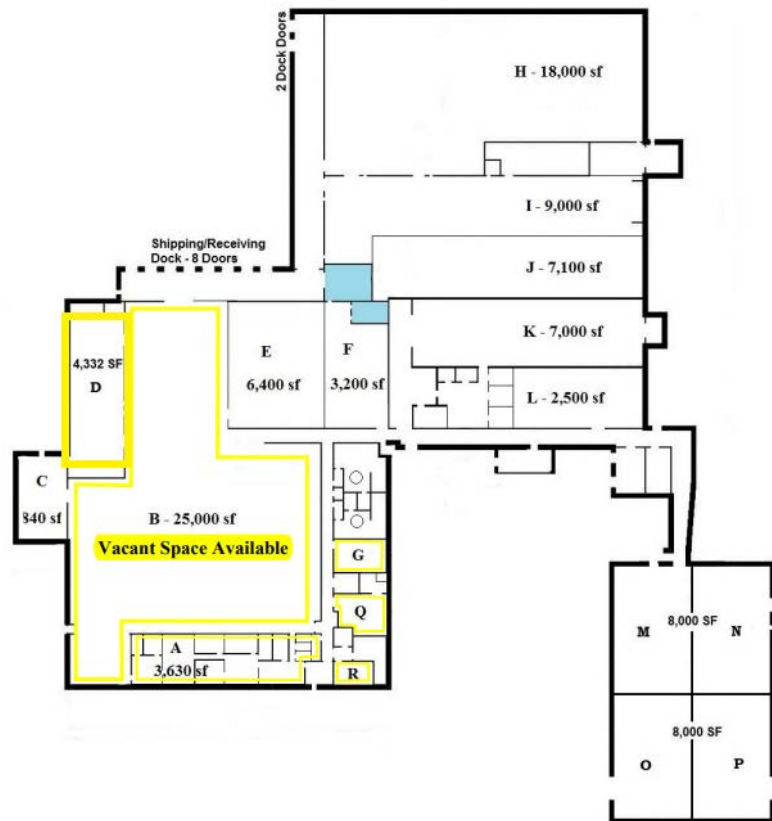




**Industrial/Flex
Space For Lease**
4200 Hoerner Rd.
Little Rock, AR 72209

**Lease Rate:
\$2/SF MG**

- * Approx. 25,000 SF of warehouse and 7,962 SF of office available
- * Office space can be opened up to create a showroom
- * Building has 9 dock high doors with multiple roll up doors
- * Approx. 12 acres of outside fenced storage space available



**7,962 SF Office Space Available &
840 - 45,000 SF Warehouse Space**

Suites can be combined or subdivided

Property is conveniently located off 65th St,
on the corner of Patterson and Hoerner.

FOR MORE INFORMATION, CONTACT:

Lauren Frederick

Commercial Agent

501-374-2303

lfrederick@hosto.com

haybarrealestate.com

4200 Hoerner Rd • Little Rock, Arkansas



From I-30 West, take the 65th St. exit and head West.
Turn left onto Patterson, and property is on the corner of Patterson and Hoerner.



All information contained herein is secured from sources we believe to be reliable. However, no information is guaranteed in any way. Any reproduction of this material is prohibited without consent of Haybar Real Estate.

AGENCY/OWNERSHIP DISCLOSURE

Haybar Real Estate is the agent for the owner of the property described herein and has an ownership interest.



701 W. 7th Street • PO Box 3395 • Little Rock, AR 72203 • (501) 374-2303 (O) • (501) 372-3850 (F)