

The Labor Supply In A Booming Economy

Nicholas Eberstadt

Henry Wendt Chair in Political Economy

American Enterprise Institute

eberstadt@aei.org

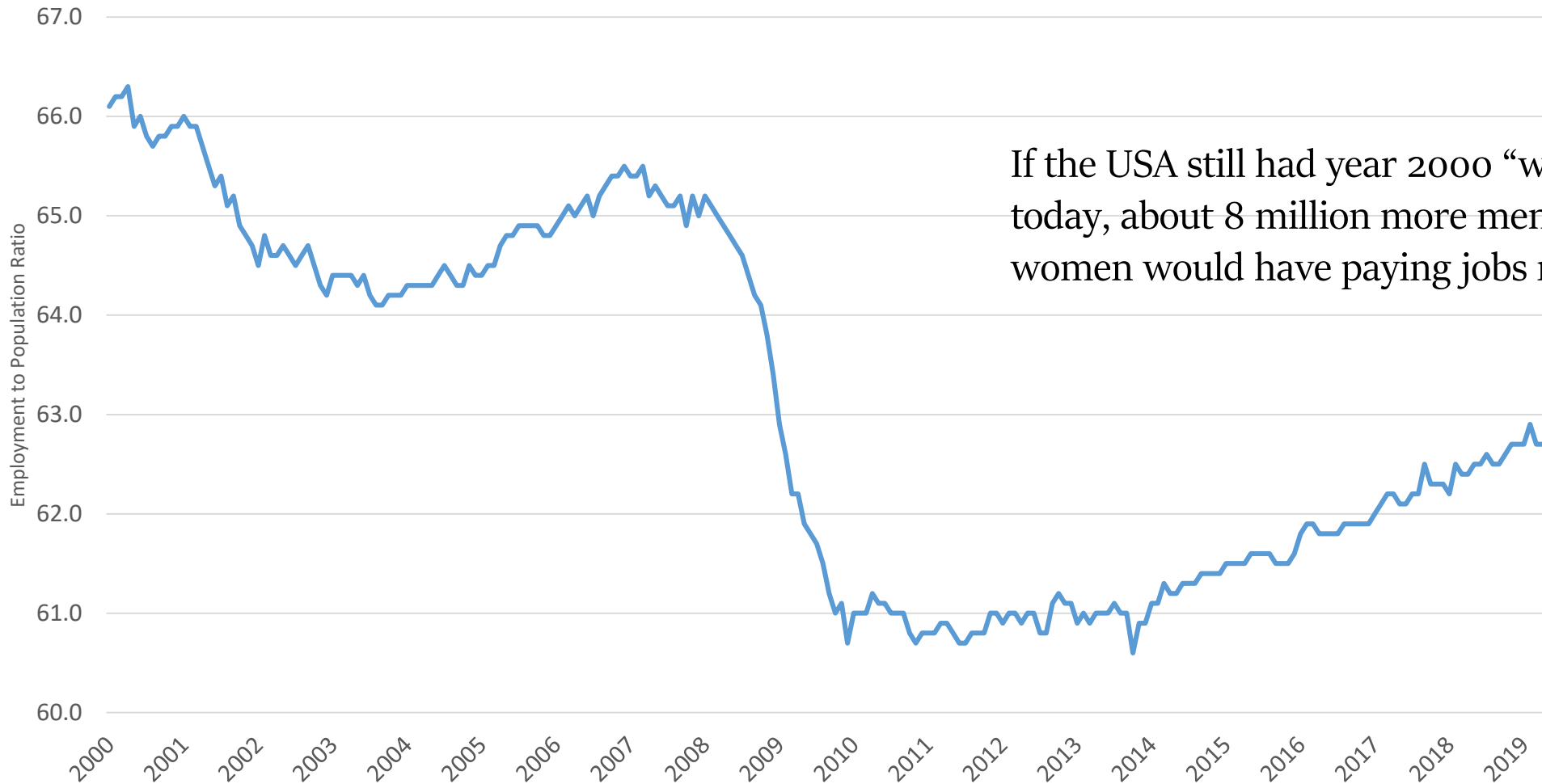
Secretaries' Innovation Group

Washington DC

July 10 2019

America's Invisible Jobs Crisis

Employment to Population Ratio for 20+ Population: USA, 2000-2019 (seasonally adjusted)



If the USA still had year 2000 “work rates” today, about 8 million more men and women would have paying jobs right now

US male “work rates”:

Right Now vs. Selected Depression Years

Year and source	Employment to population ratio, men 20-64 (percentage of civilian non-institutional population)	Employment to population ratio, men 25-54 (percentage of civilian non-institutional population)
June 2019 (BLS, seas. Unadj.)	81.1	86.3
1940 (Census)	81.3	86.4
1930 (Census)	88.2*	91.2*^

Notes: * = calculated for total enumerated population, not civilian non-institutional population

^ = 25-44 population—corresponding male 25/44 work ratio for 2015 would be 85.3 for civilian non-institutional population alone

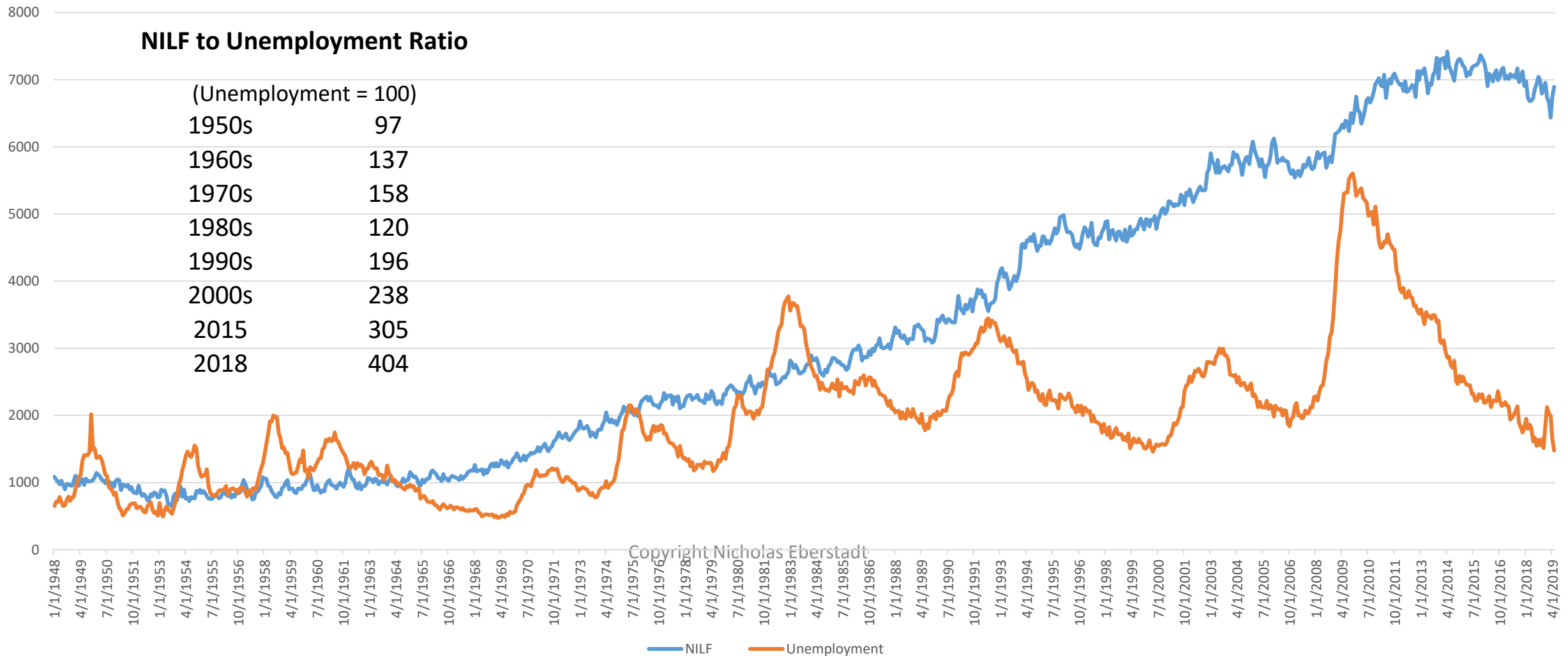
Sources: For May 2019: Derived from BLS “Labor Force Statistics from Current Population Survey”, <https://www.bls.gov/web/empsit/cpseea13.htm> July 8, 2019;

For 1940: derived from http://www.jstor.org/stable/117246?seq=1#page_scan_tab_contents ; <http://censusacn.adobeaecloud.com/library/publications/1943/dec/population-labor-force-sample.html> Table 1; <http://www2.census.gov/library/publications/decennial/1940/population-institutional-population/08520028ch2.pdf> ; <http://www.dtic.mil/dtic/tr/fulltext/u2/a954007.pdf>. Accessed August 5, 2016.

For 1930: http://digital.library.unt.edu/ark:/67531/metadc26169/m1/1/high_res_d/R40655_2009Jun19.pdf. Accessed March 2, 2016 Copyright Nicholas Eberstadt

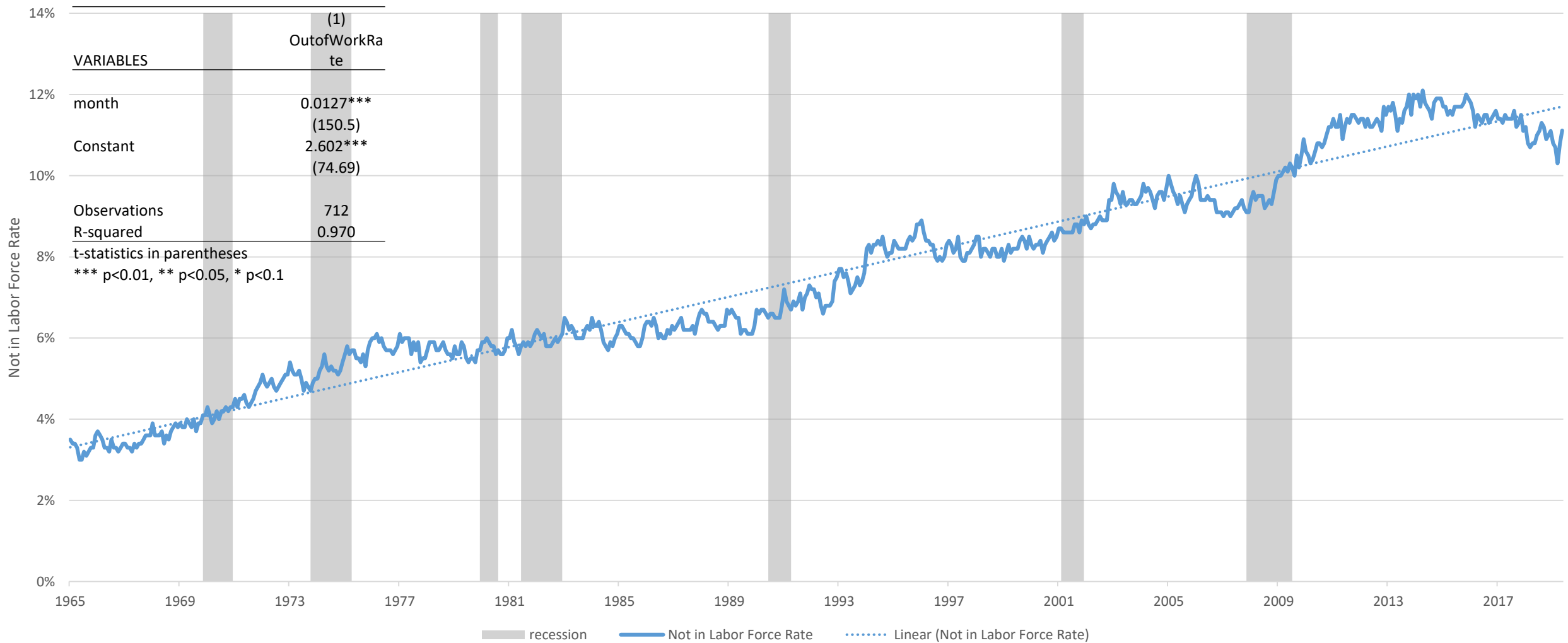
The Great Postwar “Flight From Work” by Men

US Male 25-54 Unemployed vs. Not In Labor Force (NILF) : Jan 1948- May 2019
(seasonally unadjusted), monthly data



The Uncanny Regularity of the Male Flight From Work

NILF Rates for Men 25-54 Years of Age: USA, 1965-2019



Notes: Recession variables- The data used to create this figure is from the "Current Population Survey" (CPS) as was downloaded from the Bureau of Labor Statistics. The data used to create the regression table in the upper left corner is also from the "Current Population Survey" but was downloaded from IPUMS-CPS for statistical manipulation.

Recession dummy variables for the following recessions spanning the subsequent years- (1969-1970), (1973-1975), (1980-1982), (1990-1991), 2001, and (2007-2009).

Sources: Labor Force Data: Men 25-54 from 1948-2015 (Monthly Data), Bureau of Labor Statistics <http://data.bls.gov/pdq/querytool.jsp?survey=ln>.

Recession Data: National Bureau of Economic Research (NBER) "U.S. Business Cycle Expansions and Contractions" <http://www.nber.org/cycles.html>.

Unfilled Positions Today: Not Just Chemical Engineers and Coders

Job Openings by Industry: USA, April 2019 (000s)

• Total: **7,449**

• Private Sector **6,726**

of which:

--construction **404**

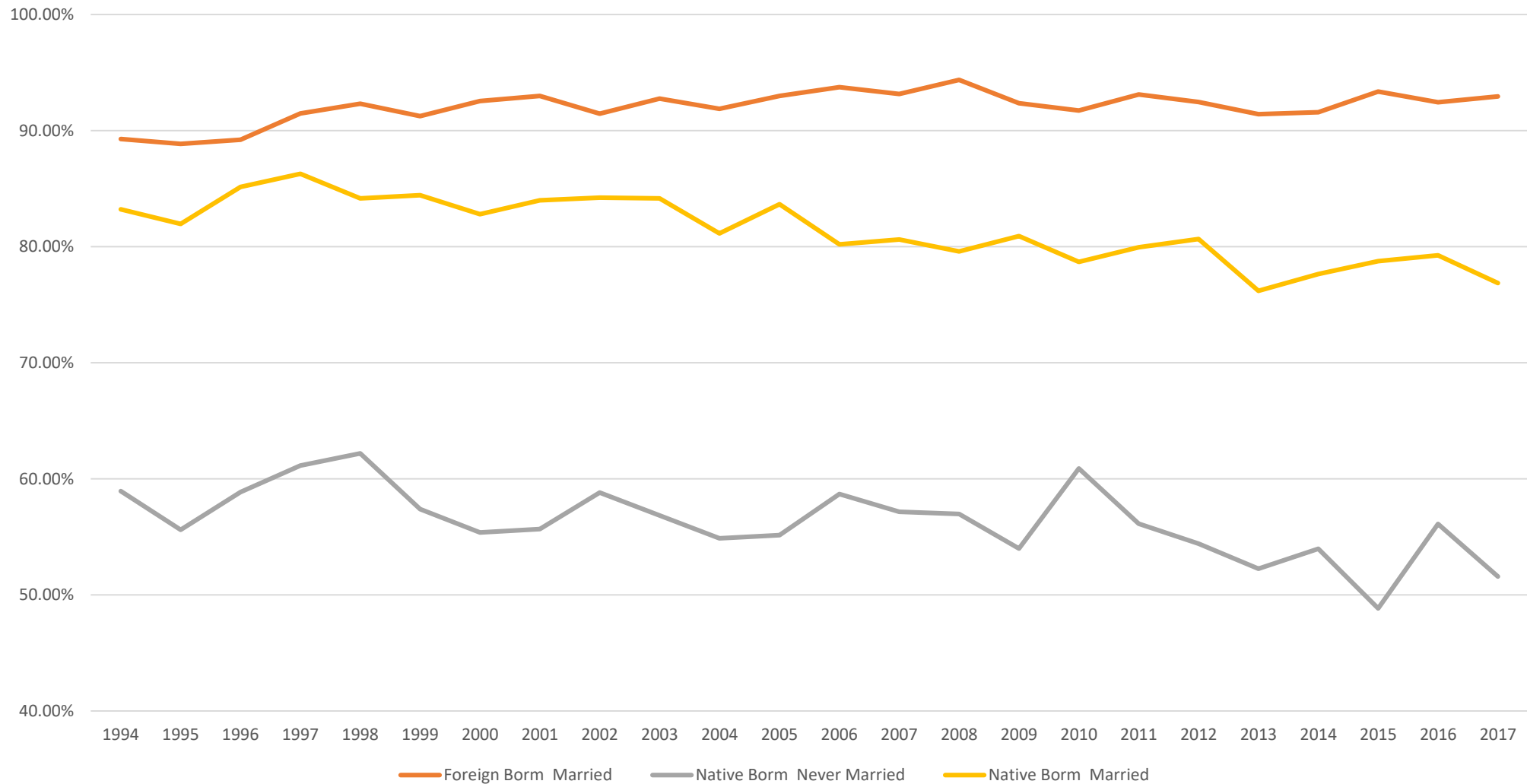
--transportation, warehousing, and utilities **373**

--retail trade **837**

--accommodation and food services **899**

Source: BLS JOLTS Survey, <https://www.bls.gov/news.release/jolts.a.htm>, accessed June 17, 2019

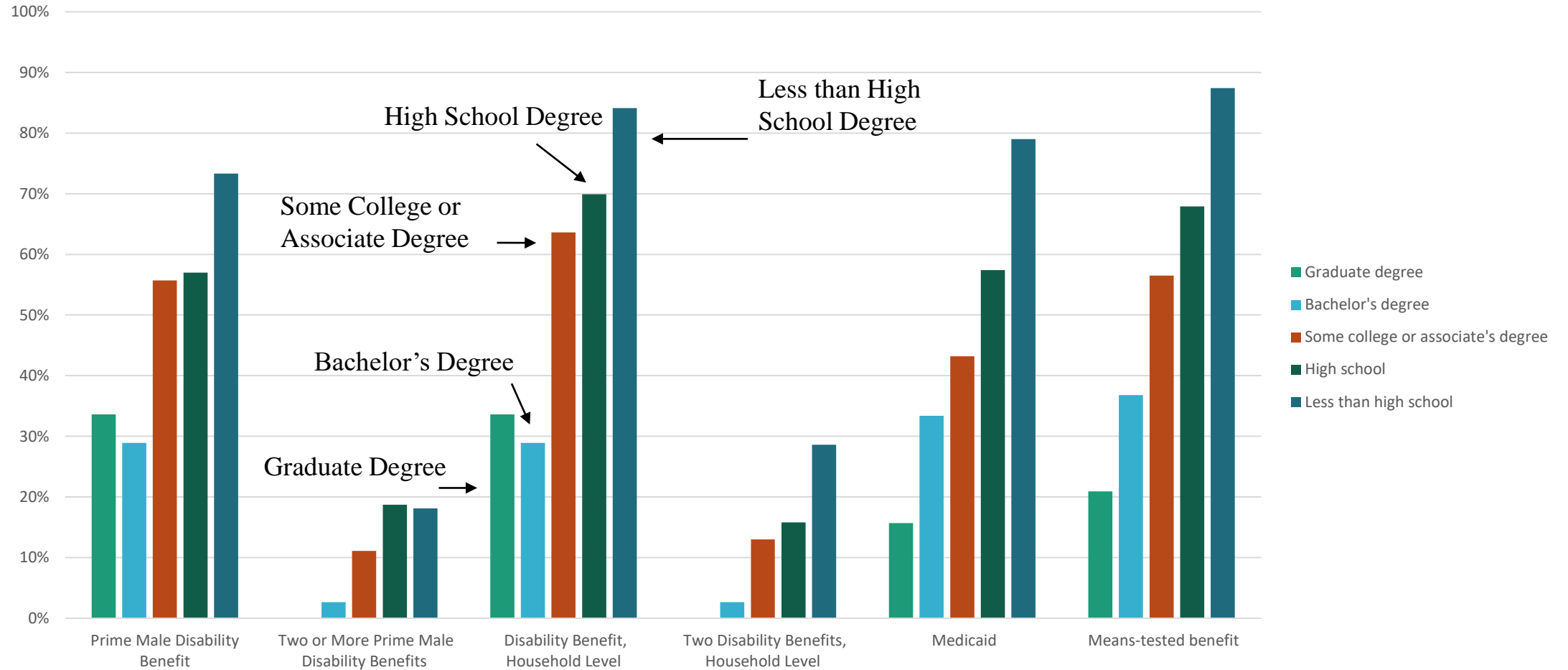
Labor Force Participation Rate for Prime Age Men with Less than a High School Diploma , Foreign Born and Native Born, Married and Never Married (1994-2017)



Source: Sarah Flood, Miriam King, Renae Rodgers, Steven Ruggles, and J. Robert Warren. *Integrated Public Use Microdata Series, Current Population Survey: Version 6.0* [dataset]. Minneapolis, MN: IPUMS, 2018. <https://doi.org/10.18128/D030.V65.0>

Disability Archipelago

Disability Benefits and Means Tested Benefits by Education:
 Non-Labor Force Men Aged 25-54, 2013 (percent)



Ex-Con Explosion

Estimated Population of Felons and Ex-Felons: USA, 1948-2010

