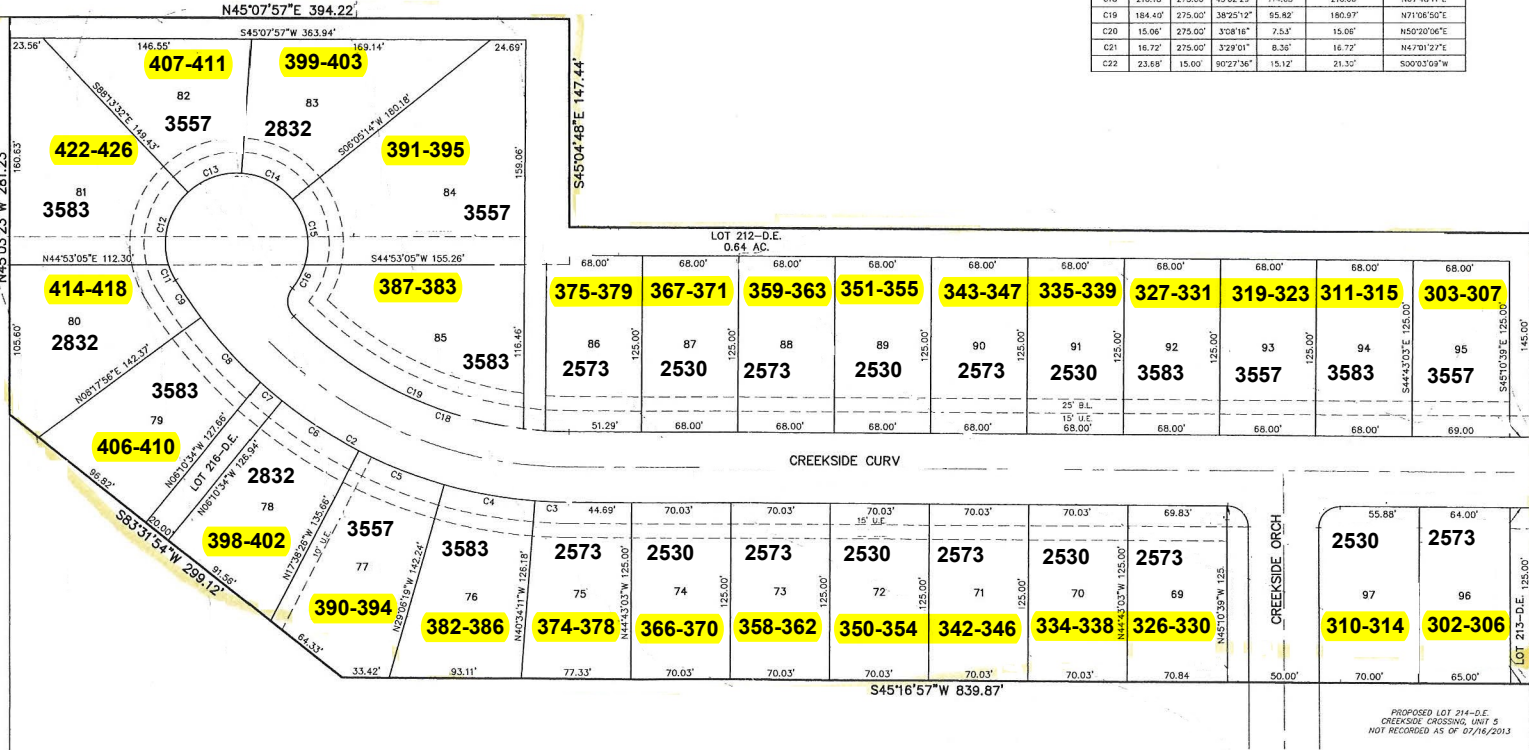


# Creekside Phase IV

TERRELL ZIMMERMANN  
 REMAINDER OF CALLED 118.350 AC.  
 VOLUME 271, PAGE 336  
 D.R.C.C.T.

LOT 18  
 EBERT SUBDIVISION, UNIT 1  
 DOCUMENT NUMBER 22076002552  
 M.P.R.C.C.T.

Curve Table						
CURVE	LENGTH	RADIUS	DELTA	TANGENT	CHORD LENGTH	CHORD BEARING
C12	56.09'	50.00'	64°16'26"	31.41'	53.19'	S30°21'45"E
C13	41.15'	50.00'	47°09'23"	21.82'	40.00'	S25°21'09"W
C14	41.15'	50.00'	47°09'23"	21.82'	40.00'	S72°30'32"W
C15	49.03'	50.00'	58°10'56"	25.63'	47.09'	N55°49'18"W
C16	18.85'	50.00'	21°35'58"	9.54'	18.74'	N16°35'59"W
C17	21.87'	15.00'	83°32'41"	13.40'	19.99'	S47°54'13"E
C18	216.18'	275.00'	45°02'29"	114.03'	210.66'	N67°48'11"E
C19	184.40'	275.00'	38°25'12"	95.82'	180.97'	N71°06'50"E
C20	15.06'	275.00'	3°08'18"	7.53'	15.06'	N50°20'06"E
C21	16.72'	275.00'	3°29'01"	8.36'	16.72'	N47°30'27"E
C22	23.89'	15.00'	90°27'36"	15.12'	21.30'	S00°03'09"W



PROPOSED LOT 214-D.E.  
 CREEKSIDE CROSSING, UNIT 5  
 NOT RECORDED AS OF 07/16/2013