

“BROOM SPEED LIMIT” HSS-04 HALLOWEEN STREET SIGN COLLECTION



CANVAS DESIGN BY KIMBERLY ANN NEEDLEPOINT
STITCH GUIDE DESIGN & STITCHING BY KIMBERLY ANN NEEDLEPOINT
DIAGRAMS BY KIMBERLY ANN NEEDLEPOINT

Photocopying of this stitch guide is invited.
Production by Kimberly Ann Needlepoint.
WWW.KIMBERLYANNNEEDLEPOINT.COM

THREAD: “BROOM SPEED LIMIT” HSS-04

| <u>COMPANY</u> | <u>NAME</u> | <u>NUMBER</u> | <u>*QUANTITY</u> |
|--------------------------|----------------------------|---------------|------------------|
| KIMBERLY ANN NEEDLEPOINT | BROOM SPEED LIMIT | HSS-04 | 1 |
| RAINBOW GALLERY | NEON RAYS + | NP09 | 2 |
| RAINBOW GALLERY | SILK LAME BRAID FOR 18 CT. | S801 | 1 |
| RAINBOW GALLERY | PETITE VERY VELVET | V601 | 1 |
| SUNDANCE BEADS | BEADS- SIZE 14 | COLOR# 384 | 1 |
| SUNDANCE BEADS | PURPLE THREAD | COLOR# TPRP | 1 |

*Please note recommended thread is based on expected usage. Individual-stitch technique/style may vary.

| |
|---------------------------------|
| <u>ADDITIONAL TOOLS NEEDED:</u> |
| *SIZE 20 TAPESTRY NEEDLE |
| *BEADING NEEDLE AND WAX |
| <u>RECOMMENDED TOOLS:</u> |
| STRETCHER BARS |
| BRASS TACKS |
| SMALL NEEDLEPOINT SCISSORS |

STITCH GUIDE: “BROOM SPEED LIMIT” HSS-04

| <u>DESIGN AREA</u> | <u>THREAD</u> | <u>NUMBER</u> | <u>STRANDS</u> | <u>STITCH</u> | <u>NOTES</u> |
|--------------------------------|-------------------------|---------------|----------------|--------------------------|---|
| PURPLE BACKGROUND | R.G.- NEON RAYS+ | NP09 | | 4 WAY CONTINENTAL | |
| PURPLE BORDER | R.G.-NEON RAYS+ | NP09 | | CRISS CROSSING WITH BEAD | *USE PURPLE THREAD TO MATCH BEADS, SEE LAST PAGE FOR BEADING TIPS PROVIDED BY SUNDANCE BEADS INC. |
| | SUNDANCE BEADS- SIZE 14 | #384 | | | |
| BLACK BORDER | R.G.-SILK LAME BRAID | SLO1 | | SMYRNA CROSS | |
| LETTERING: “BROOM SPEED LIMIT” | R.G.-PETITE VERY VELVET | V601 | | TENT | |
| LETTERING: “55” | R.G.-PETITE VERY VELVET | V601 | | VERTICAL SLANTED GOBELIN | |

*****SHARE YOUR STITCHING AND FOLLOW KIMBERLY ANN NEEDLEPOINT ON INSTAGRAM!*****

@KIMBERLYANNNEEDLEPOINT

#KIMBERLYANNNEEDLEPOINT #HALLOWEENSTREETSIGNS #FREESTITCHGUIDE

PURPLE BACKGROUND: 4 WAY CONTINENTAL STITCH

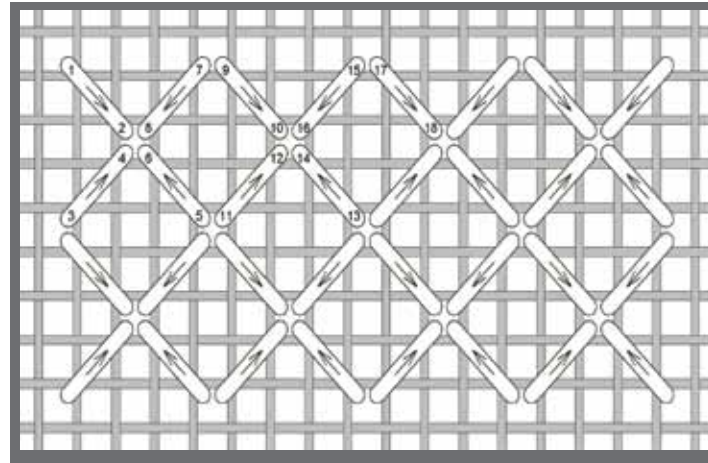


IMAGE KIMBERLY ANN NEEDLEPOINT

PURPLE BORDER: CRISS CROSSING WITH BEAD

STEP 1:

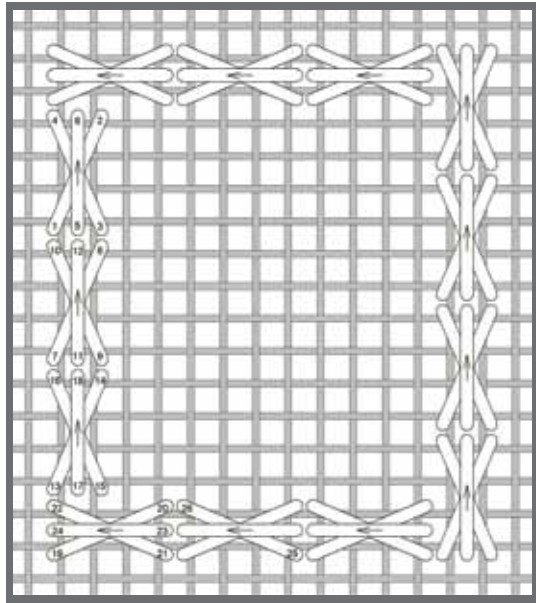


IMAGE KIMBERLY ANN NEEDLEPOINT

STEP 2: Lay bead "across the ditch" & *Lasso. *see last page.

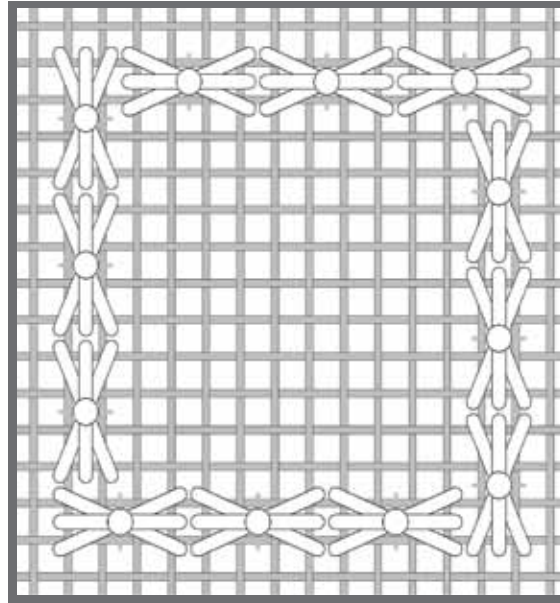


IMAGE KIMBERLY ANN NEEDLEPOINT

STEP 3: Tent Stitch around the edges (Using your Neon Rays).

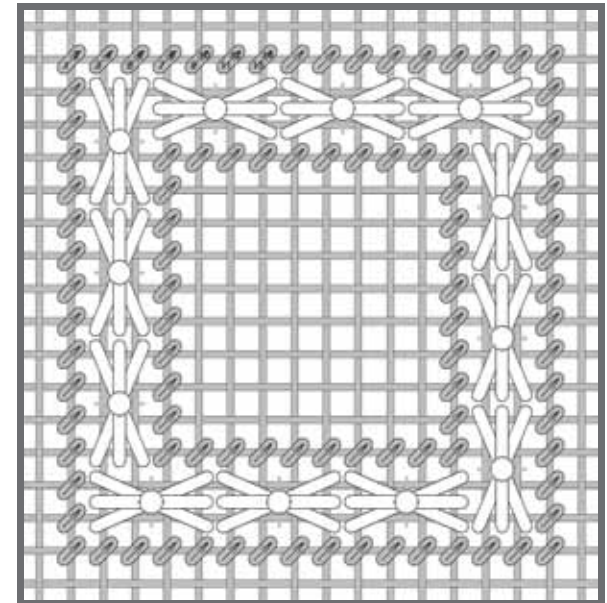


IMAGE KIMBERLY ANN NEEDLEPOINT

BLACK BOARDER: SMYRNA CROSS STITCH

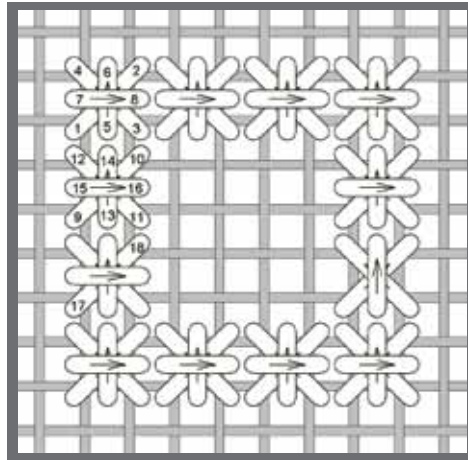


IMAGE KIMBERLY ANN NEEDLEPOINT

LETTERING~ “BROOM SPEED LIMIT”: TENT STITCH

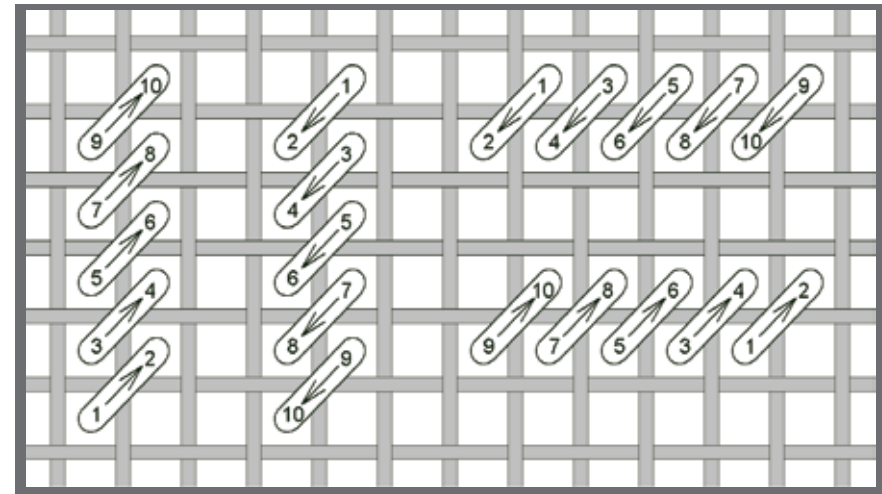


IMAGE KIMBERLY ANN NEEDLEPOINT

LETTERING~ “55”: VERTICAL SLANTED GOBELIN STITCH

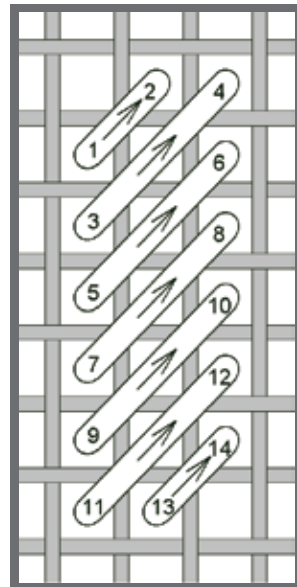


IMAGE KIMBERLY ANN NEEDLEPOINT

IMPORTANT BEADING TIPS!

“HOW TO & WHY KNOT!” WRITTEN & PROVIDED BY SUNDANCE DESIGN INC.

“NEEDLING THE THREAD:

1. First, cut a long length of the beading thread about twice what you would use normally (about 24”) as you will be doubling it over in the needle.
2. Run the thread over the cake of wax, and stretch the thread.
3. Pull one end of the thread between your thumb and index finger, just to the point where you can no longer see the thread.
4. Now put the eye of the needle between your fingers and slide it onto the thread. It should go right on the thread, if not, cut the end blunt and try again.
5. Double the thread over and tie a knot at the end.”

“HOLDING YOUR BEADS WHILE WORKING:

To hold the beads while working, we like to use a short strip of double sided transparent tape attached to the stretcher bar. You can pour a capful of beads onto the tape where they will be held in place for you to retrieve with your needle.”

“ANCHORING YOUR THREADS:

Now that you have threaded the needle and have a knot in the end of the two lengths and have your beads near by, you can start beading. If you have an area of stitching close to the area where you intend to bead, you can simply run the beading thread under your previous stitching leaving the knot on the back of your stitching.”

LASSOING TECHNIQUE:

“To guarantee a secure bead attachment, you may want to use this technique of Lassoing your bead.

Step 1- Come up from the back of the canvas, add the bead, cross the canvas intersection and go down to the back of your canvas.

Step 2- Come up again through the same canvas hole, separate the two strands of the beading thread and place one thread on each side of the bead. (Do not go back through the bead hole). Go back down through the canvas hole. This will add an extra stitch to keep your bead snugly in place.”

