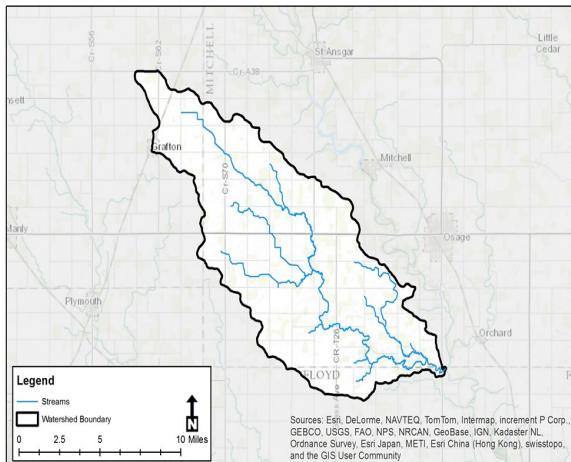




What is the Rock Creek Watershed?

- 44,787 acre watershed located in NE Iowa
- 87% row crop agriculture
- Begins as a drainage ditch in Worth County and flows south-east through Mitchell County and into Floyd County where it joins the Cedar River
- Nearly entirely privately owned



Mitchell Soil & Water Conservation District



And Partners!

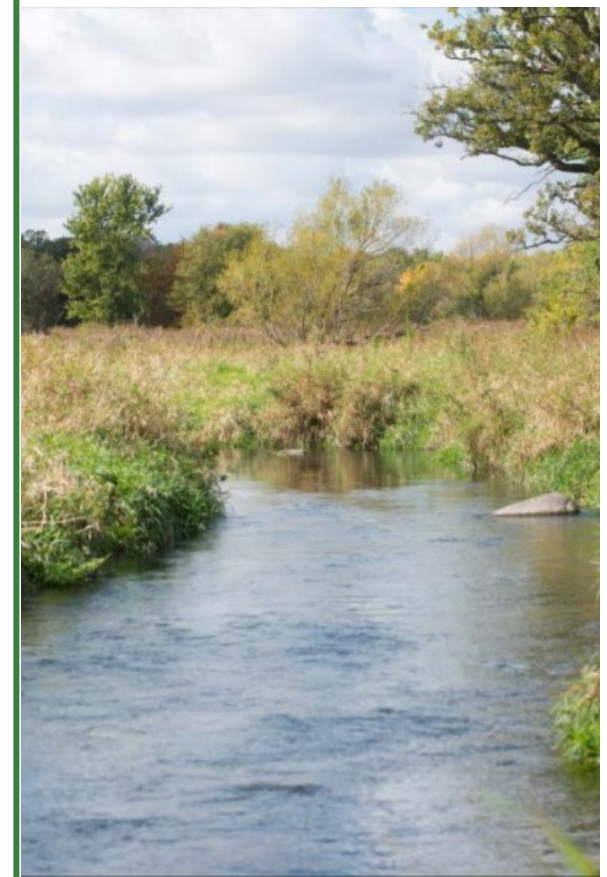


To find out more or to get involved please contact the Project Coordinator:

Ellen Friedrich
641-732-5504 Ext. 3
Ellen.Friedrich@usda.gov
1520 Main St Osage IA, 50461
www.mitchellswcd.org

"USDA is an equal opportunity provider, employer, and lender"

Rock Creek Watershed Project

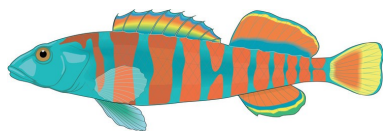


Mitchell Soil & Water Conservation District

The Rock Creek Watershed Project began in 2014. It was the first watershed project in the state of Iowa to create a watershed scaled plan in line with the Iowa Nutrient Reduction Strategy.

What are the Goals of the Rock Creek Watershed Project?

- Reduce in-stream nitrogen loading by 41%
- Reduce in-stream phosphorus loading by 29%
- Increase soil organic matter by 1%
- Maintain or increase agricultural productivity and revenues
- Reduce flood risk
- Maintain or increase upland wildlife habitats
- Maintain or improve aquatic life



Some of the best identified ways for meeting the watershed goals are through the use of cover crops, reduced tillage, nutrient management, and restoration of wildlife habitat!



What Strategies is the Project Using to Reach its Goals?

- We provide technical assistance to help farmers and landowners implement water quality improvement and conservation practices
- We offer financial assistance through local, state, and federal programs to support the use of agricultural best management practices i.e. cover crops, strip/no till, wetlands, and waterways
- We track and monitor local water quality conditions
- We provide educational resources and opportunities for community members to learn about local water quality, conservation, agricultural, and environmental issues

How Can you Get Involved?

- “Like” Mitchell County Soil & Water Conservation District on Facebook
- Attend our regular workshops and events to learn more about best management practices
- Find ways to implement positive practices on your land and in your day-to-day life
- If you are a landowner or farmer, visit your local USDA Service Center and take advantage of cost share opportunities and free technical assistance
- Engage with your neighbors and friends on conservation, environmental, and agricultural issues
- Share your story of what you do to promote the well-being of your watershed!

Every individual makes a difference!

