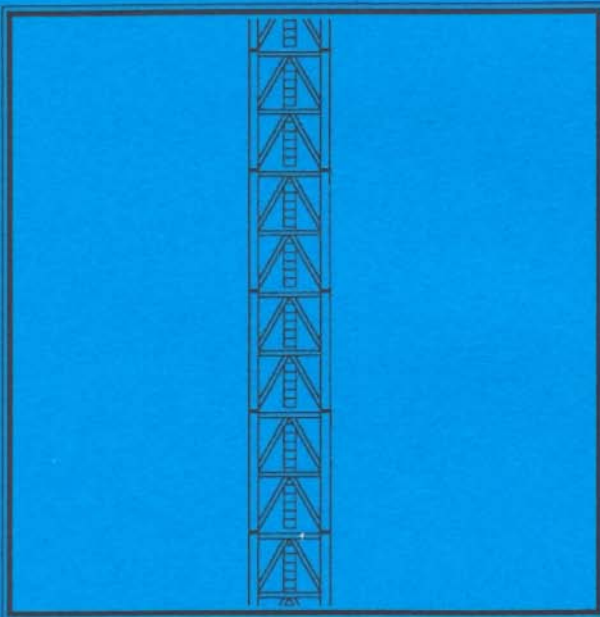


# M1050D CONSTRUCTION TOWER CRANE



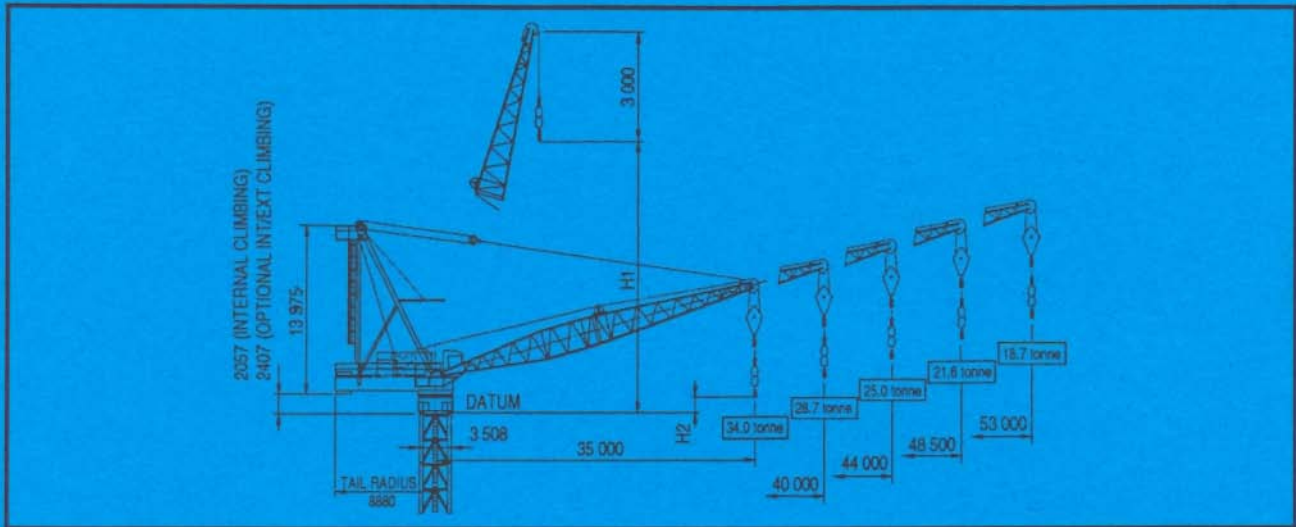
---

Technical Data Sheet

---

**FV**ELLE  
**FAVCO**  
THE CRANEMAKERS

## Dimensions



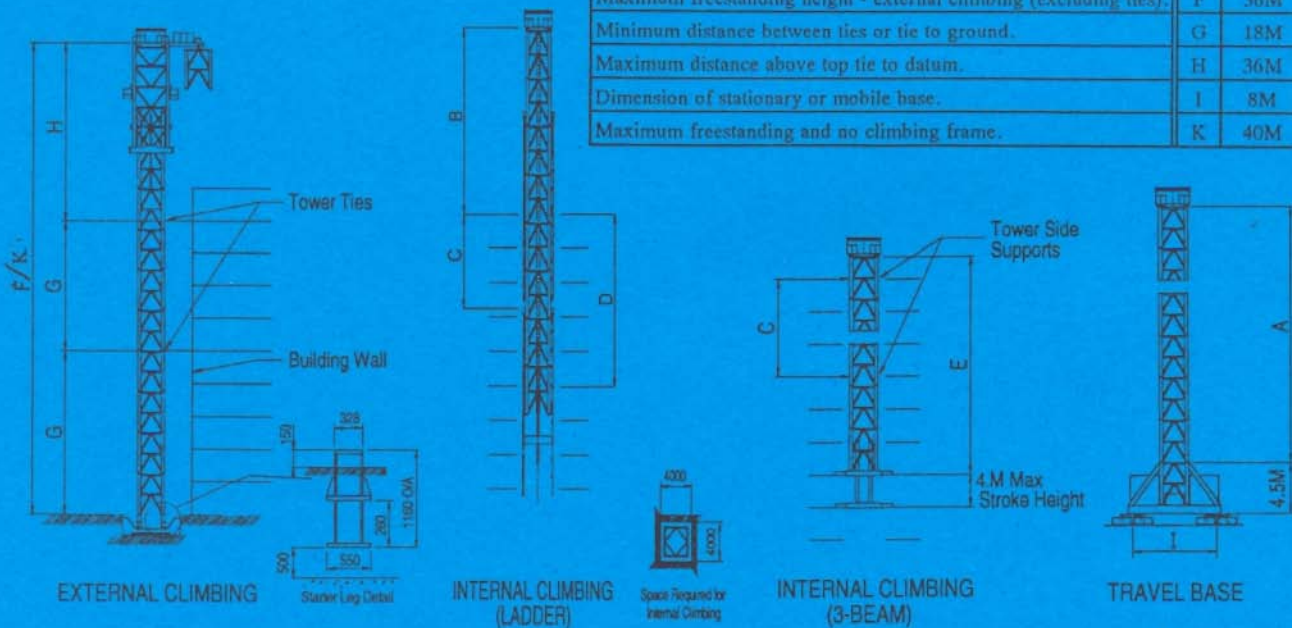
### EXTERNAL CLIMBING



Tower dimensions applicable for in-service wind speeds up to 20 m/s & out-of-service wind speeds up to 42 m/s, tower type 1052.

Alternate tower height configurations available upon request.

General Dimensions		1052 Tower
Maximum freestanding height between travel base/ground to datum.	A	40M
Maximum distance above top collar to datum.	B	40M
Minimum distance between climbing collars.	C	12M
Maximum distance between climbing collars.	D	36M
Maximum distance from base to datum (including climbing towers).	E	44M
Maximum freestanding height - external climbing (excluding ties).	F	36M
Minimum distance between ties or tie to ground.	G	18M
Maximum distance above top tie to datum.	H	36M
Dimension of stationary or mobile base.	I	8M
Maximum freestanding and no climbing frame.	K	40M





## Radius & Capacity

Boom Length (M)	Min Radius (M)	Max Radius 96 Tonne (M)	Internal Climbing		Radius & Capacity (Tonne) (25 Tonne & 32 Tonne Winches & 3-Fall Hook)																
			H1 (M)	H2 (M)	25 Tonne & 32 Tonne Winches & 3-Fall Hook																
					12.5	15.0	17.5	20.0	22.5	25.0	27.5	30.0	32.5	35.0	37.5	40.0	42.5	45.0	47.5	50.0	52.5
55.0	4.4	13.2	55.9	17.3	96.0	86.7	73.8	61.0	54.2	47.4	42.8	38.3	35.0	31.8	29.3	26.9	25.0	23.2	21.7	20.2	18.9
50.4	4.3	13.3	51.3	16.3	96.0	87.7	74.3	61.5	54.6	47.8	43.3	38.8	35.5	32.3	29.9	27.5	25.6	23.7	22.2		
45.8	4.0	13.3	46.7	15.6	96.0	87.3	74.7	62.0	55.2	48.4	43.8	39.3	36.1	32.9	30.5	28.1	26.1				
41.2	3.7	13.4	42.1	13.0	96.0	87.9	75.2	62.6	55.8	49.0	44.4	39.9	36.7	33.5	31.1	28.7					
36.6	3.3	13.4	35.7	13.5	96.0	88.0	75.6	63.2	56.3	49.5	45.0	40.5	37.2	34.0							

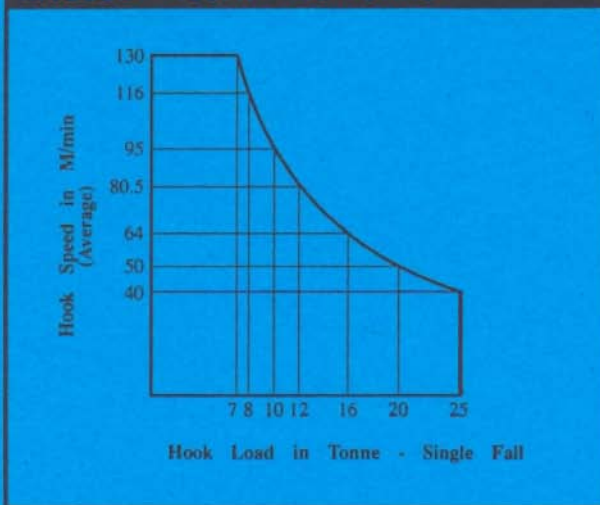
Additional longer radius load charts available on request.

Capacities shown within the shaded area at left, are indicative of a 35-Tonne winch. 25-Tonne winch capacities for the same range equal 75-Tonne.

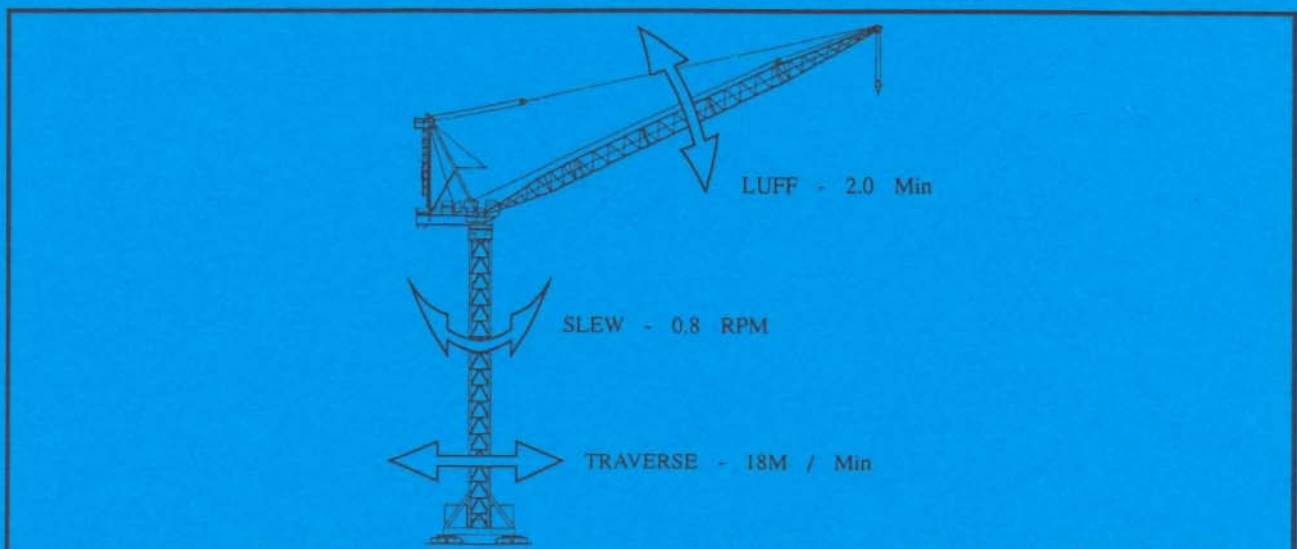
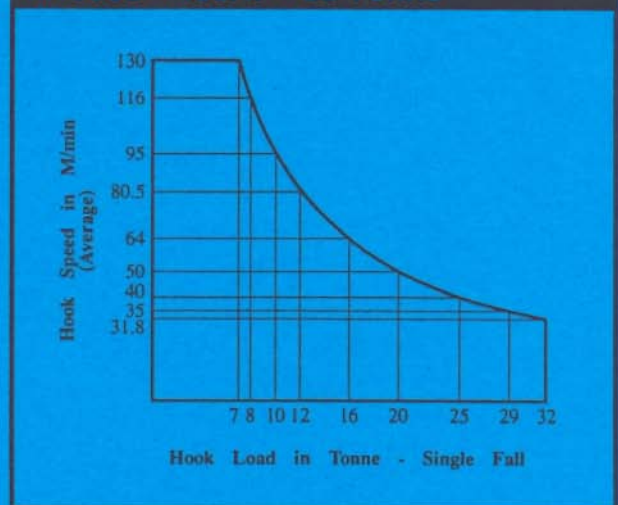
## Speeds

(Alternate Speed Configurations Available on Request)

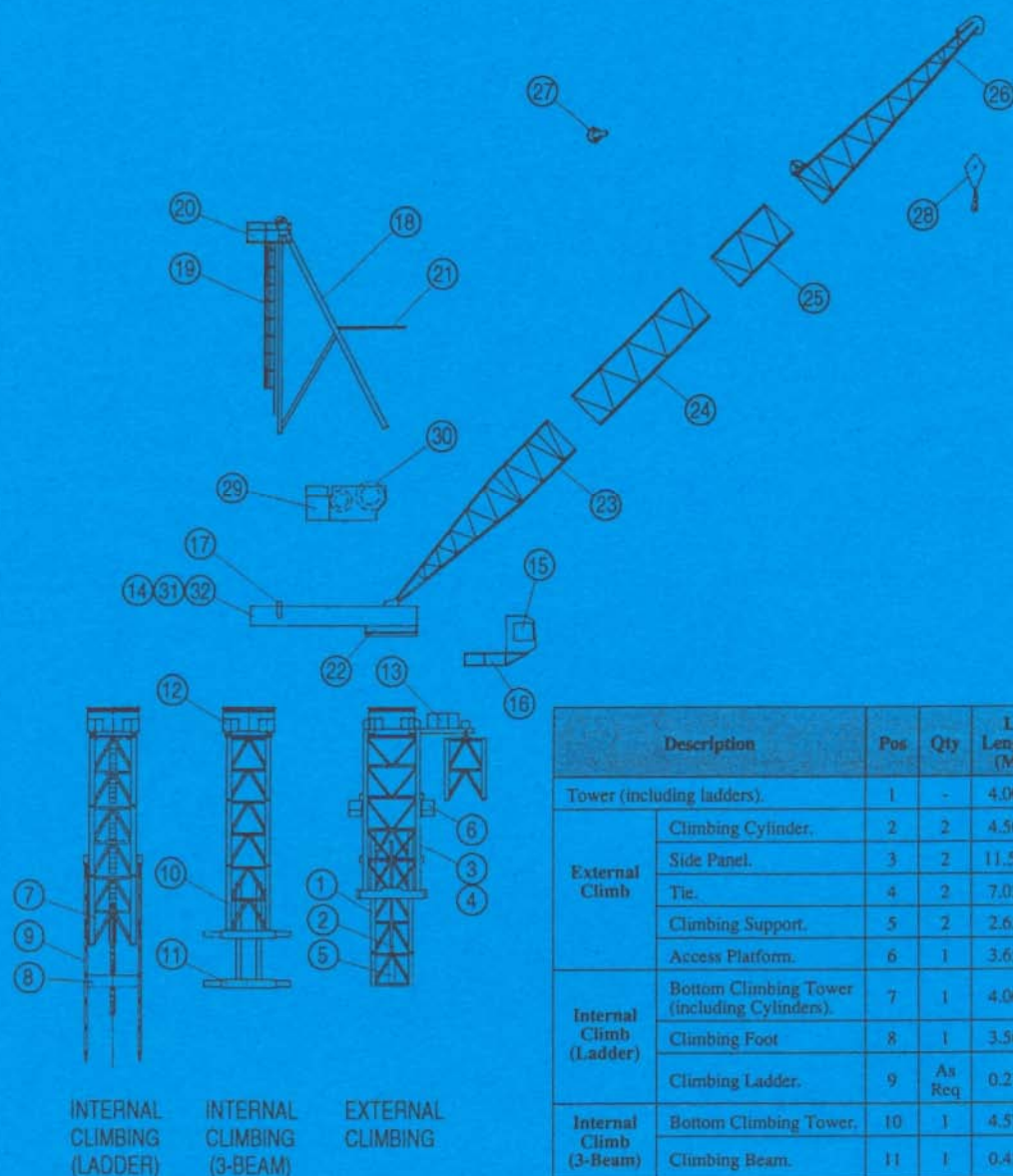
M1050D - 400HP - 25 Tonne



M1050D - 400HP - 32 Tonne







Description	Pos	Qty	L Length (M)	B Width (M)	H Height (M)	Weight per Item (kg)	
Tower (including ladders).	1	-	4.000	3.508	3.518	6018	
External Climb	Climbing Cylinder.	2	4.500	0.330	0.330	2400	
	Side Panel.	3	11.520	0.390	3.840	6300	
	Tie.	4	7.020	0.207	3.540	1100	
	Climbing Support.	5	2.650	0.335	0.800	400	
	Access Platform.	6	1	3.650	1.073	1.235	200
	Internal Climb (Ladder)	Bottom Climbing Tower (including Cylinders).	7	1	4.000	3.508	3.518
Climbing Foot		8	1	3.560	0.440	0.950	2600
Climbing Ladder.		9	As Req	0.210	0.170	7.985	525
Internal Climb (3-Beam)	Bonom Climbing Tower.	10	1	4.575	3.508	3.518	9500
	Climbing Beam.	11	1	0.450	3.508	0.802	1850
Slew Mount.	12	1	4.200	3.518	1.868	6500	
Monorail Beam & Trolley.	13	1	7.530	1.680	1.400	1600	
M/C Deck.	14	1	10.505	3.700	2.082	17000	
Cabin.	15	1	1.700	1.100	2.100	1200	
Cabin Support.	16	1	3.790	1.440	1.500	234	
Counterweights.	17	10	3.060	0.275	2.200	9500	
Mast & Sheaves.	18	1	14.400	0.800	3.220	8352	
Mast Ladder.	19	1	13.220	0.975	0.800	289	
Mast Platform.	20	1	2.475	1.450	0.940	202	
Boom Buffer.	21	1	3.790	0.220	2.810	290	
Slew Ring.	22	1	3.650	3.650	0.175	2300	
Bottom Jib Section.	23	1	13.700	3.920	3.015	3523	
Jib Extension Section.	24	1	9.200	3.015	3.015	2418	
Jib Extension Section.	25	1	4.600	3.015	3.015	1250	
Top Jib Section.	26	1	13.700	3.015	3.015	3930	
Bridle.	27	1	1.670	0.750	1.170	785	
3-Fall Hook.	28	1	0.950	0.332	2.410	1250	
Powerpack Winches.	29	1	5.650	2.950	2.250	14848	
Hoist Rope.	30	1	600.00	-	-	4612	
Split Deck-Front.	31	1	-	-	-	-	
Split Deck-Back.	32	1	-	-	-	-	

# FAVELLE FAVCO

**FAVELLE FAVCO CRANES PTY LTD**

A.C.N. 003 689 478

(Incorporated in N.S.W.)

### Head Office

28 Yarrunga Street, Prestons

P.O. Box 456, Liverpool N.S.W. 2170, Australia

Telephone: 61-2-608-2000 Fax: 61-2-607-0022

**Distributed By:**