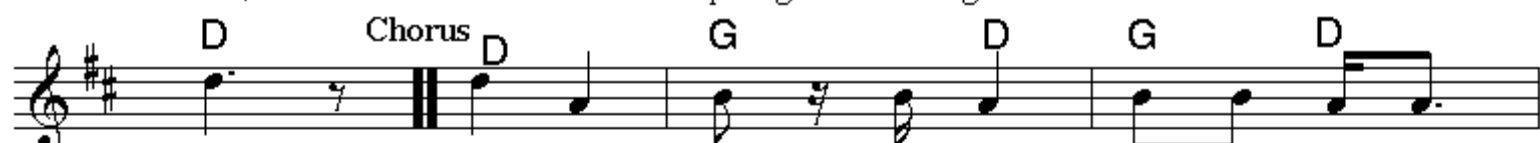




Oh! Lou'-si - a - na's de same old state, Whar Mas - sa us'd to  
went to de ball de ud - der night, I cut a might-y



dwell; He had a lub-ly cul - lud gal, 'Twas the Lou' - si - a - na  
swell, I dancetted Pol-ka pi - geon wing wid de Lou' - si - a - na



Belle. Oh! Belle, Don't you tell, don't tell Mas - sa,



don't you, Belle, Oh! Belle, de Lou'-si - a - na Belle, It's gwine to mar-ry you,



Lou'-si-a-na Belle. I Lou'-si-a-na Belle. Dere's Dandy Jim ob Car-o-line, I  
First de B and dende E, And



knowshim by de swell A Tryin' to comeit might- y fine Wid de  
den de double L: A - nud-der E to the end ob dat Spells de



Lou' - si - a - na Belle. Oh! Belle, Don't you tell,



don't tell Mas-sa, don't you, Belle, Oh! Belle, de Lou'-si - a - na Belle,



It's gwine to mar-ry you, Lou'-si - a - na Belle. Dere's Lou'-si - a - na Belle.