

P R E S E N T I N G
A COMPLETE LINE

of
Archery
EQUIPMENT
AND SUPPLIES



This is the home of Whiffen "RANGE TESTED" Archery Equipment. Here carefully selected and scientifically treated lumber is converted into fine archery equipment by expert craftsmen.

This large, modern building also houses a 100 foot range where Whiffen archery equipment is tested for accuracy, durability, and shooting qualities.

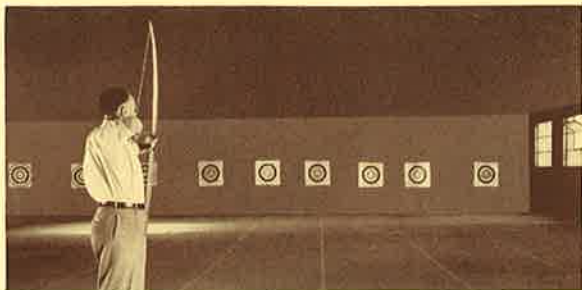
When you buy Whiffen Archery Equipment, you get the best that master craftsmen, using modern scientific methods, can produce.

Catalog D-39

L. C. WHIFFEN CO., Inc.

828 W. Clybourn St. Milwaukee, Wis.

Whiffen craftsmen are carefully chosen for their skill and experience in the manufacture and use of archery equipment. Painsstaking care and a natural "feel" for this kind of work are requisites for employment.



INDOOR ARCHERY RANGE

Above is an actual photograph of our Archery Range. Here, during every afternoon and evening, archery enthusiasts receive practice and instructions, coached by Bill Conger, present Wisconsin State Field and Indoor champion. Here, also, Whiffen experts test new equipment.

**"RANGE TESTED" IS MORE THAN A SLOGAN.
IT IS A CONSTANTLY DEMONSTRATED FACT.**



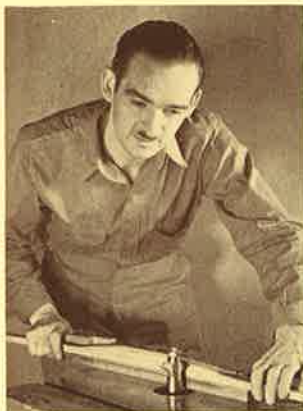
WILFORD CONGER

Wilford (Bill) Conger, present holder of Wisconsin State Field and Indoor Championships, is a Whiffen staff member. He is range Pro., and "Range Tests" new equipment.



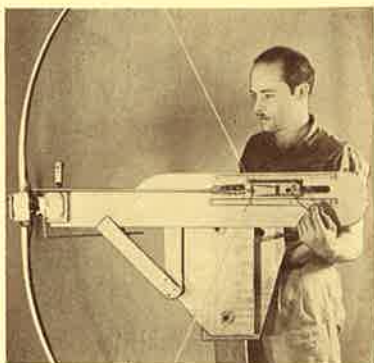
BRUCE ROBERTSON

Bruce Robertson, nationally known as an expert bowyer, and as a holder of archery championships, is also part of the Whiffen organization. Mr. Robertson personally inspects all finished equipment.



JACK QUICK

Jack Quick, a recognized authority on the designing and manufacture of Archery Equipment, is in charge of production.



"SHOOTING" MACHINE

This machine assures correctness of Whiffen-made arrows in every detail . . . brings out all of the shooting qualities, by eliminating the natural human "variables".

BOWS

Whiffen "RANGE TESTED" bows are all made from expertly selected and scientifically seasoned stock. They are designed and fashioned by qualified bowyers, for accuracy, durability, maximum casting properties, and smoothness in shooting.

GUARANTEE

Every Whiffen bow is guaranteed against defects in material and workmanship.

SPEED-KAST BOWS

Made from the most select YEW-WOOD, OSAGE ORANGE, and LEMON WOOD Billets, and "RANGE TESTED" for shooting qualities, we offer the SPEED-KAST bow as our best-

SPEED-KAST YEW bow any weight	\$18.50 to \$25.00 each
SPEED-KAST Osage-Orange any weight	\$18.00 to \$25.00 each
SPEED-KAST Lemonwood Nagler Design, Fibre Backed 20 to 50 lb. pull	\$ 8.00 to \$10.00 each
SPEED-KAST Lemonwood Bows	\$ 5.50 to \$ 6.50 each

COLLEGIATE BOWS

Collegiate bows 17 to 40 lb. pull	\$4.50 each
Junior Lemonwood bow 5 ft. 2 in. 17 to 35 lb. pull	\$4.00 each

These bows are designed for instruction and all around use for men and women. Weights from 17 to 40 lbs. pull.

JUNIOR AND CADET SPORTSTER BOWS

Hardwood Bows, designed for Junior boys and girls

Junior Sportster Bow	\$2.50 each
--------------------------------	-------------

When ordering your bow, please send a description of user, stating sex, age, weight, height. This will help us to send you a bow best suited to your individual needs.

CARE OF EQUIPMENT

by L. C. "Larry" Whiffen

Bows and arrows are precision instruments and should be treated with care. Brace (string) your bow properly.

Do not let inexperienced persons handle your equipment without proper instruction.

During the winter months, keep your bow where the air is neither too warm nor dry.

Never draw the bow nor release string without an arrow.

Always keep the bow unstrung (unbraced) when not in use, and when storing, hang your bow (unbraced) on a peg.

A fine bow properly cared for should last a long time and give the owner many hours of shooting pleasure.

Arrows will stay accurate longer if kept in a regular Arrow Container or Box.

Keep arrows in same atmospheric conditions as recommended for bow.

Prices subject to change without notice
All prices F. O. B. Milwaukee

ARROWS



The efficiency and accuracy of the arrow is fully as important to the archer as the quality of his bow. The Whiffen Co. uses as great care in selection of arrow materials as is used in the selection of bow stock. The same fine craftsmanship is used in arrow making, and like Whiffen-made bows, arrows are "RANGE TESTED".

Matched Arrows

Gold Buster Matched arrows are made from select Port Orford cedar shafts, and footed with a high grade BEEF-WOOD stock. They are expertly matched for weight, spine and point of balance. Beautifully fletched, crested and fitted with molded ARO-LITE nocks (any desired color).

This is the arrow we suggest for the tournament archer who wants consistently high scores.

Gold-Buster footed arrows
 matched, set of 12, machine shot **\$15.00**
 Pattern furnished on request
 matched, set of 18, machine shot **\$21.50**

Tru-Flite arrows are made from fine Port Orford Cedar and footed with beef-wood. Expertly fletched, beautifully crested, and ARO-LITE nocked. Excellent for tournament use.

Tru-Flite Footed Arrows

Set of 8 **\$6.00**
 Set of 12 **\$8.50**

Tru-Flite P. O. Self Arrows

Set of 8 **\$4.25**
 Set of 12 **\$6.00**

Collegiate Footed Arrows

Set of 6 **\$3.50**
 Set of 8 **\$4.25**
 Set of 12 **\$6.00**

Collegiate P. O. Self Arrows

Set of 6 **\$2.50**
 Set of 8 **\$3.25**
 Set of 12 **\$4.50**

Sportster Practice Arrows

Sportster practice arrows, selected birch shafts, crested
 Each **\$0.25**
 Per Dozen **\$2.85**

Metal Arrows

We can offer an absolutely satisfactory metal arrow, made from the best possible alloy (S. T. 17).

Metal Arrows—Per Doz., fitted with ARO-LITE Nocks **\$12.00**

Regular stock arrows may be had in 24, 25, 26, 27 and 28 inch lengths, 5/16" or 9/32" diameters. Spine rating No. 2 for 20 lb. bows, No. 3 for 30 lb. bows, etc. Special lengths may be had at an additional charge of **\$1.00** per set.

HUNTING AND ROVING

It is only natural that once a person has learned to use a bow and arrow, he should have a desire to try his equipment in the field. Some archers like to shoot at inanimate objects, while others like to try for game, both large and small. This phase of archery is especially healthful and invigorating, and should be encouraged.

In many states certain areas have been set aside during hunting season for bow and arrow hunters exclusively. State conservation commissions are realizing the growing popularity of the sport, and if local archery clubs will work close with their conservation authorities, Archery will soon become one of the country's major field activities.

Prices subject to change without notice.
 All prices F. O. B. Milwaukee



Hunting & Roving Equipment

BOWS

A good YEW-WOOD, OSAGE ORANGE or fibre backed LEMONWOOD bow is preferable for hunting and roving. We suggest you choose as heavy a bow as you can handle well. Please refer to bow price listings page 3 of this catalog.

HUNTING & ROVING ARROWS

BROADHEAD ARROWS

Points of the finest Swedish spring steel. Shafts of 11/32" P. O. Cedar, 24, 26, 28 inch length. 4" fletchings.

Each **\$0.60** Per Doz **\$6.00**

TEAR DROP ARROWS

Tear Drop Arrows (small game and roving), 3/8" Birch shafts,
 Each **\$0.50** Per Doz **\$5.00**

BRASS BLUNTS

Brass Blunts for Roving, 3/8" Birch shaft, long 4" fletch,
 Each **\$0.50** Per Doz **\$5.00**

FLIGHT ARROWS

Weight, approximately 300 grs., each **\$1.50**
 Footed, celluloid or small feather vanes



Complete Archery Sets

Whiffen "RANGE TESTED" archery sets are carefully selected and assembled to fit the needs of the user. Each set contains a bow . . . 6 arrows . . . arm guard . . . and shooting tab. Sets are packed in a strong fibre board box which may be used for storage of equipment. Sets are designed for both men and women archers.

CHAMPION "SPEED KAST" MATCHED SET

Contains beautiful flat Lemonwood bow, balanced to set of 6 matched, footed arrows, plus all additional equipment.
 Champion SPEED-KAST set, complete, each **\$11.75**

COLLEGIATE SET

Contains 1 collegiate lemonwood bow, set of 6 Port Orford selected arrows, plus all additional equipment.
 Collegiate set, complete, each **\$7.75**

JUNIOR SPORTSTER SET

Designed for the young archer. Set contains 1 Hardwood bow, set of 6 Sportster birch arrows, plus all additional equipment. Bow may be had from 17 to 35 lb. pull.
 Junior Sportster set, each **\$4.50**

When ordering set, please state age, sex, weight and height of user.

Prices subject to change without notice
 All prices F. O. B. Milwaukee

SCHOOL AND CAMP EQUIPMENT

The Whiffen Company has had many years of experience working with physical education departments of high school, college and camp counsellors. Through this work we have gained an intimate knowledge of the archery requirements in these fields and are in a position to act in an advisory capacity, where archery is concerned.

Mr. Whiffen, personally, will be glad to confer or correspond with Athletic Directors and Camp Counsellors to help organize archery activities.

Bows For High School . . . College . . . Camp

COLLEGIATE bows have been designed primarily for use in archery instruction. When ordering, please state whether equipment is to be used by men or women, and average group age.

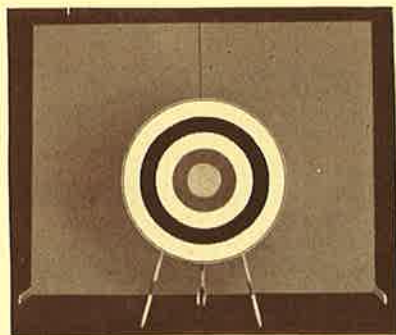
LEMONWOOD BOWS

COLLEGIATE Lemonwood Bows, each.....	\$4.50
In lots of 6, to schools and organizations.....	Less 5%
In lots of 12, to schools and organizations.....	Less 10%

ARROWS

COLLEGIATE footed arrows, per dozen.....	\$6.00
COLLEGIATE Port Orford self arrows, per doz.....	\$4.50
SPORTSTER birch arrows, per doz.....	\$2.85
Lots of 6 doz.,.....	Less 5%
Lots of 12 doz.,.....	Less 10%

Light, Portable Back Stop



Each section 5 ft. wide by 8 ft. high. Each section can be set up in very few minutes, and stored in a space 2" in width.
Per section, F. O. B. Milwaukee, each.....\$10.50

48" TARGET FACES

48" target faces printed in full colors on heavy white craft paper
Each.....\$0.50 Per dozen.....\$3.95
For other accessories, refer to Pages 7 and 8.

Prices subject to change without notice.
All prices F. O. B. Milwaukee

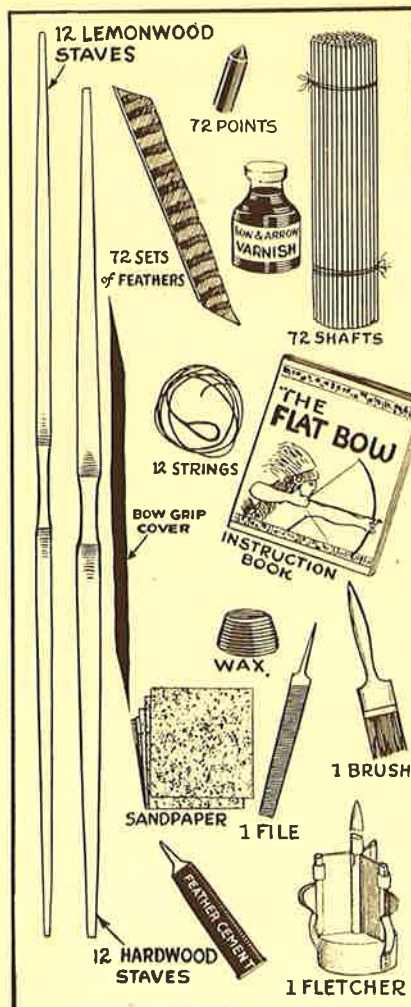
MAKA BOW KITS

Many manual training instructors, and camp counsellors have found the Whiffen "MAKA BOW" kit the answer to their "What shall the class make?" problem.

The student develops a creative pride in what he makes . . . especially if it is something he can use after it is completed. This is particularly true of archery equipment.

With this thought, the Whiffen Co. has included in the "MAKA BOW" kit all of the materials needed to complete an archery set, with the least possible chance for spoilage.

Each "MAKA BOW" kit contains enough materials to make TWELVE COMPLETE ARCHERY SETS. Included in EACH kit are:



- 12 Semi-Finished Bows
- 12 Bow Strings
- 12 Grip Covers
- 72 Arrow Shafts
- 72 Sets of Ground Feathers
- 72 Metal Points
- 1 Tru-Flite Fletcher
- 12 Sheets of Sandpaper
- 1 Tube of Fletching Cement
- 1 Can of Varnish
- 1 Brush
- 1 Nock File and Scraper Blade
- 1 Flat Bow Book
- 1 Cake of Wax

All of the above materials come packed in one container, ready for parcel post shipment.

Kit No. 1

12 hardwood staves, 20 to 35 lb. pull, plus all of the above materials for 12 complete sets.

Each kit, complete.....\$15.75

Actual cost per individual archery set.....\$1.31

Kit No. 2

12 Lemonwood staves, plus the necessary materials for 12 complete sets

Each kit, complete.....\$19.75

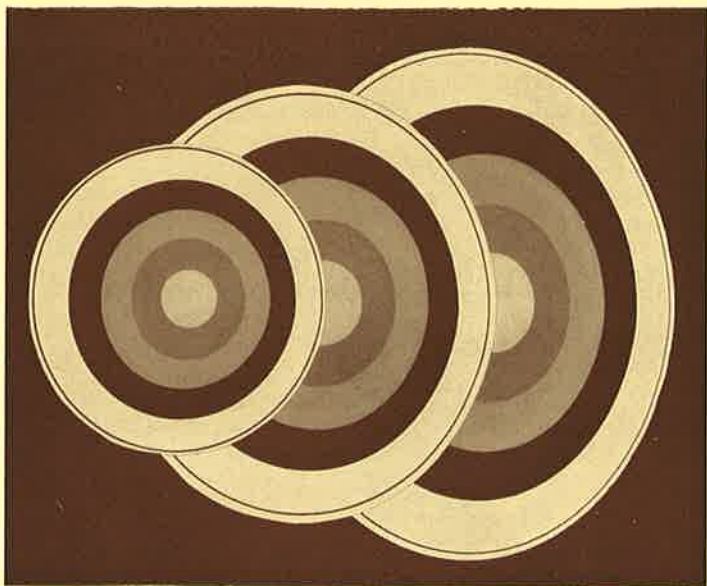
Actual cost per individual archery set.....\$1.65

When ordering kit, please state sex and average age of group.

Prices subject to change without notice
All prices F. O. B. Milwaukee

ACCESSORIES

Targets and Target Faces



48" Coiled rye straw targets	\$13.75 each
48" Compressed straw target	7.50 each
36" Compressed straw target	5.50 each
24" Compressed straw target	3.75 each
48" Oil cloth target faces	1.50 each
48" Target faces (cloth, tie-on)	2.25 each
48" Heavy craft paper faces, full colors,	
Each50
Per Dozen	3.95
30" Heavy craft paper faces, full colors,	
Each25
Per Dozen	2.00
Soft wood target stand	1.25 each



INSTRUCTION
BOOK

Flat Bow Book

The FLAT BOW BOOK is the most explicit book published on equipment construction. This book has 200 drawings and pictures dealing with every phase of making archery equipment, and is written in a straight-forward understandable manner. It is the ideal book for construction work.

Flat Bow Book.....\$ 0.50 each

Prices subject to change without notice.
All prices F. O. B. Milwaukee

LEATHER ACCESSORIES

Beautifully styled, and carefully made, the leather accessories listed below are the choice of leading archers.



Perfect fit shooting glove, Cordovan, **\$1.25**

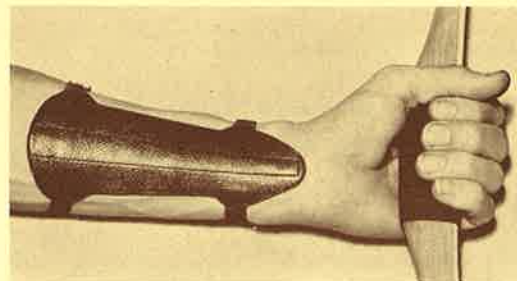
Cordovan finger tabs, large or small, ea. **\$0.25**

Cowhide finger tabs, Each.....**\$0.15**

Arm Guards

The Kool arm guard is light, thin, comfortable and efficient.
Cordovan ladies' or men's, each.....**\$1.25**

Standard LACE-AND HOOK arm-guard equipped with hooks and round elastic lace
Plain Cowhide, Large, each... **\$0.75**
Plain cowhide, Small, each... **\$0.65**



"KOOL"

Quivers

CHAMPION

A very neat, serviceable target quiver 16" long, 1 1/2" in diameter, tapered leather straps riveted to ring equipped with belt hook.

Solid oak tanned strap leather. Embossed decoration, each.....**\$1.50**
Bearhide with formed leather bottom, Each.....**\$0.65**

ROVER

Heavy brown chrome elk leather 20" long. Diameter, 2 1/2"; bottom diameter, 1 3/4", each.....**\$2.00**

DEERSLAYER TEN

A hunting quiver built to hold about ten arrows. 22" long, top 2 1/4" x 3 3/4", bottom 1 1/2" x 3 1/4". Complete with hood and belt, each.....**\$6.50**

STEVENSON HUNTING QUIVERS

Flexible Chrome-elk leather with flush zipper pocket for extra bow-string and file. With strap and buckle each...**\$4.75**



CHAMPION

Prices subject to change without notice
All prices F. O. B. Milwaukee

RAW MATERIALS

For the Archer who likes to make his own equipment

Billets - - Staves

Staves and Billets have been carefully selected and graded. The No. 1 grade represents fine hard grain air dried stock, which makes up into fast, hard shooting bows.

Best grade Osage and Yew staves.....	\$4.00 to \$8.00
Tillered but unsanded Osage and Yew bows, add to price of stave....	each \$6.00
Roughed out Osage and Yew staves, add to price of stave.....	2.00
Speed-Kast Lemonwood bows, shaped out.....	2.35
Collegiate Lemonwood bows, shaped out.....	1.50
Collegiate Cadet bows, shaped out.....	1.35
Sportster hardwood bows, shaped out.....	0.95
No. 1 Lemonwood flatbow stave, size 6 ft. x 1 1/2 in. x 3/4 in.....	1.25
Fibre backing two 3 ft. lengths 1 1/2 in. wide.....	0.25
Finest grade 50 lee bowstring linen 2 oz. ball (8 string average).....	0.80
14 cord high grade bow string linen, 2 oz. ball.....	0.55
Bow-string special mix wax.....	0.15
Special XX arrow shafts for Matched sets, Footed shafts, per dozen.....	4.50
Footed shafts—Spine grouped 5/16" tenoned, per dozen.....	2.50
Special XX P. O. self shafts, per dozen.....	1.50
Finest Port Orford shafts Straight full length grain sanded to 5/16" or 9/32" tenoned for points, sent out in spine grouped sets.....	1.00
SELECTED 5/16 in. birch shafts, tenoned, nocked, doz.....	.35
SELECTED 3/8 in. birch hunting or roving shafts, dozen.....	.60
POINTS, precision made, brass parallel, pile points, dozen.....	.35
SWEDISH SPRING STEEL hunting points, ready to put on.....	each .25
BLANKED OUT BROADHEAD points and slotted ferrule, per set.....	.15
TEAR DROP hardwood small game or roving points, fit perfectly on 5/16" shaft, dozen.....	.50
ARO-LITE NOCKS, all colors, 5/16", 9/32", or 1/4" easily applied, dozen....	.50
SELECTED TURKEY POINTERS, white cock, barred hen, dozen.....	.20
SETS OF GROUND FLETCHES, white cock, barred hen, dozen.....	.40
BOW STRINGS, 4 ply, 14 cord linen reg. 25 to 45 lb. test, each.....	.50
SPECIAL STRENGTH double loop strings (give bow weight and length between nocks).....	1.25

All raw materials listed above have been carefully selected and are guaranteed for quality.

Prices subject to change without notice.
All prices F. O. B. Milwaukee

TOOLS AND EQUIPMENT

for the

Archer's Home Workshop

TRU-FLITE



FLETCHER

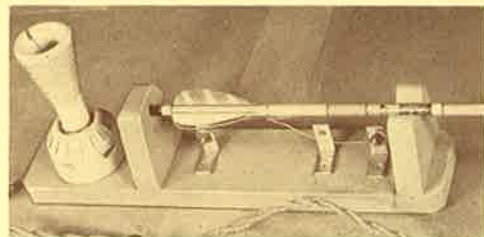
TRU-FLITE FLETCHER

A fast, sure, foolproof fletching device. Accurately sets all three feathers at one time, in 30 seconds. Cannot get out of adjustment. The TRU-FLITE fletcher should be part of every archer's home equipment.

TRU-FLITE Fletcher, each, complete..... \$1.50

TRU-FLITE FEATHER TRIMMER

This device is constructed so that it is a simple matter to trim the feathers any shape you wish. Adaptable to either AC or DC current. Set of instructions with each trimmer.

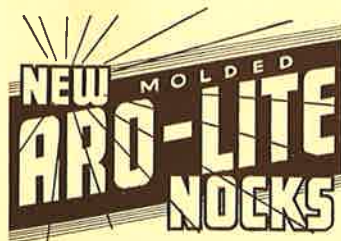


TRU-FLITE FEATHER TRIMMER

TRU-FLITE FEATHER TRIMMER, each, complete..... \$2.00

LISTING OF OTHER TOOLS

Garnet paper, per sheet.....	\$0.05
Wax, per cake.....	0.15
File, for nocking bow, each.....	0.30
Brush, each.....	0.15
Varnish, 2 oz. bottle, each.....	0.15



ARO-LITE NOCKS

This new development is a molded nock. Made from tenite, this nock is easily applied, and readily interchangeable. It is light and durable and adds greatly to the efficiency of any arrow. Aro-lite nocks are available in a variety of colors. ARO-LITE NOCKS 9/32", 5/16" or 1/4"

per dozen..... \$0.50

Please specify desired colors when ordering.



KNURLING TOOL

Ideal for use with brass points and aluminum nocks, each..... \$3.50

Prices subject to change without notice
All prices F. O. B. Milwaukee

Brief Instructions in Archery

By L. C. "Larry" Whiffen

Experience shows the necessity of using good shooting form. The following is accepted by most professionals and champions. For more complete information send for our "Hand Book" sold for.....\$0.25

BRACING (STRINGING) THE BOW. See picture. Hold bow back to you with the left hand on the grip. Brace lower limb against left foot. Bend entire bow by pushing down with palm of right hand and pull back with left, slip string ahead with fingers until it falls in nock.



STANCE (BODY POSITION). Stand straight at right angle to the target, feet slightly apart, turn head to face target (not shoulders or body) raise left arm (bow arm). Shift weight slightly forward, but do not bend body at the waist either forward or backward, nor change the position of the head. Check these points when drawing the bow.

THE BOW ARM. Bend slightly at elbows. Keep left shoulder down. Hold the bow loosely with left hand, bow resting against base of thumb, wrist relaxed, fingers around the grip forming arrow shelf on top of index finger. Do not use index finger over or around the arrow.



ARROW POSITION. Place the arrow on the left side of bow on top of the hand. Have odd colored feather away from the bow and place the arrow nock on the string so arrow is at right angles to the string. Place first three fingers of right hand under the string (Figure 2) with arrow between index and second finger and string across the finger pads just ahead of the first joint.

THE DRAW AND ANCHOR POINT. With bow arm out (extended), draw the string back against center of face with right hand under the chin. String against nose and chin, right elbow back and parallel to the arrow. The resting place of the fingers and string under and against the chin is called the anchor point. (See Figure 3).



SIGHTING WITH THE BOW. Place small object (point of aim) on the ground ahead of target so object is in vertical plane with gold, close left eye, draw, raise point of arrow until the P of A seems to rest on end of arrow. If arrows are consistently low, move P of A towards target. If high, move P of A towards you. The system works equally well at all reasonable distances.

THE RELEASE. When aim is reached, hold the breath, pull hand back against the neck as the fingers open. Keep this position until arrow reaches target, never "look up". This allows the bow and the arrow to act as smoothly as possible. Watch your anchor and release.

STANDARD TARGET ROUNDS

An "end" means shooting 6 arrows to the target.

Men's York Round, 12 ends at 100, 8 at 80, 4 at 60 yds.

Men's American Round, 5 ends at 60, 5 at 50, 5 at 40 yds.

Women's National Round, 8 ends at 60, 4 at 50 yds.

Women's Columbia Round, 4 ends at 50, 4 at 40, 4 at 30 yds.

Junior American Round, 5 ends at 50, 5 at 40, 5 at 30 yds.

Junior Columbia Round, 4 ends at 40, 4 at 30, 4 at 20 yds.

Prices subject to change without notice.

All prices F. O. B. Milwaukee

L. C. Whiffen Co., Inc.

Milwaukee, Wis.