

**Legend**

- City Owned Parks and Open Spaces
- Other Parks and Open Spaces\*
- Schools or School Properties
- Metropolitan Wastewater Property
- Urban Growth Boundaries
- Existing Pedestrian Trails
- Existing Shared-Use Trails (bikes/peds)
- Existing Designated Running Trail
- Existing Shared-Use Paths (paved)
- Planned Shared-Use Paths (paved)
- T Existing Designated Trailheads

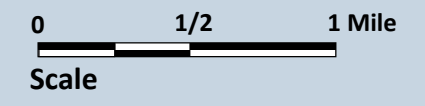
**Proposed Trails and Facilities**

- New Pedestrian Trails
- New Shared-Use Trail or Corridor
- Key On-Street Connection (ped/bike)
- New Running Trail
- Future Trail Corridor (shared-use)
- T New Bridge (pedestrian)
- T New Designated Trailhead
- Regional Connection or Feasibility Study

\* Includes State, Federal, County, and Land Trust properties (public access may be restricted)

Map Produced by JK Environments **DRAFT August 8, 2015**

**Note:** The locations of the proposed trails shown on the map are conceptual and will be refined based on supplemental analysis, land availability, and voluntary land owner participation.



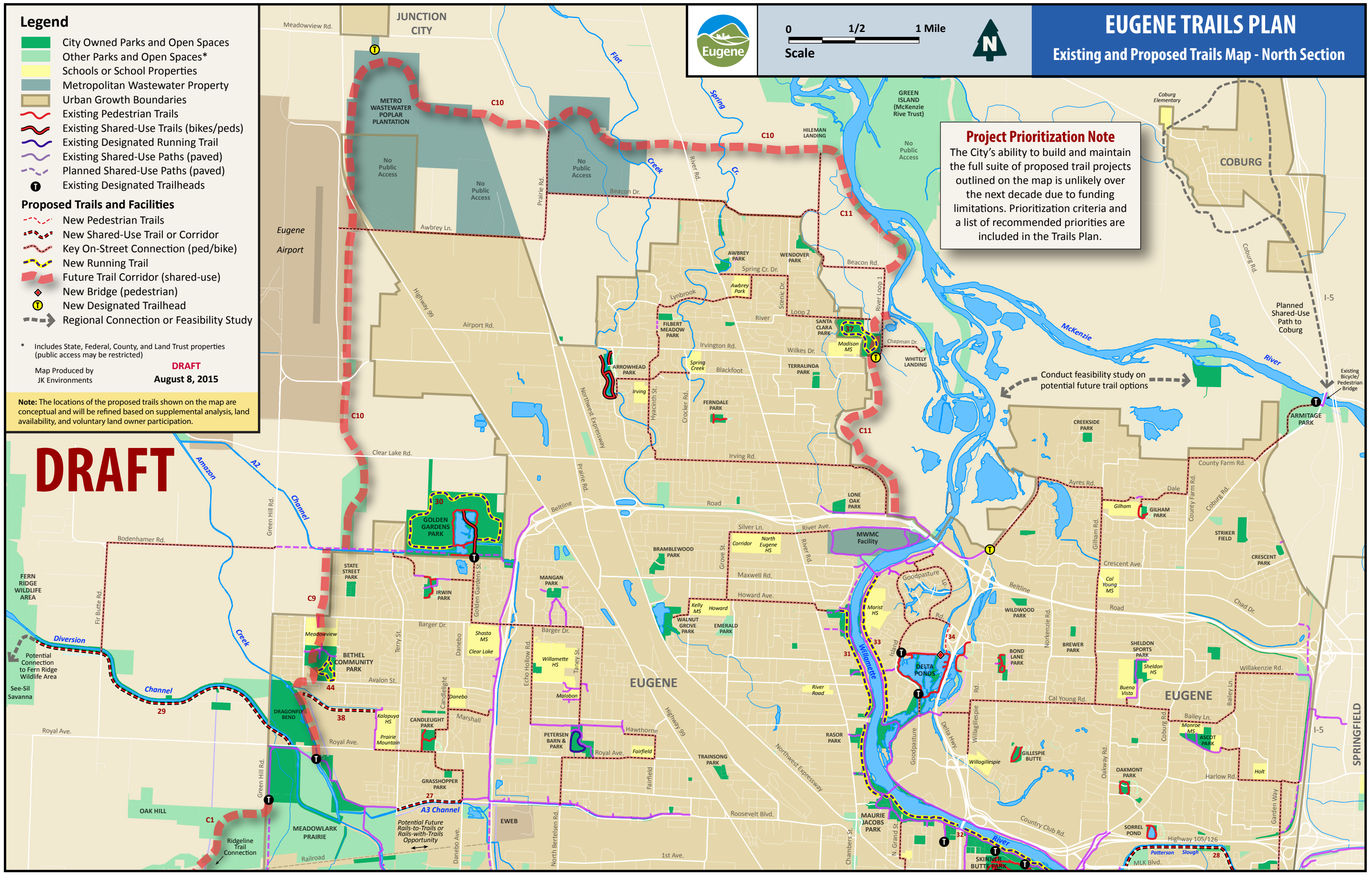
# EUGENE TRAILS PLAN

## Existing and Proposed Trails Map - North Section

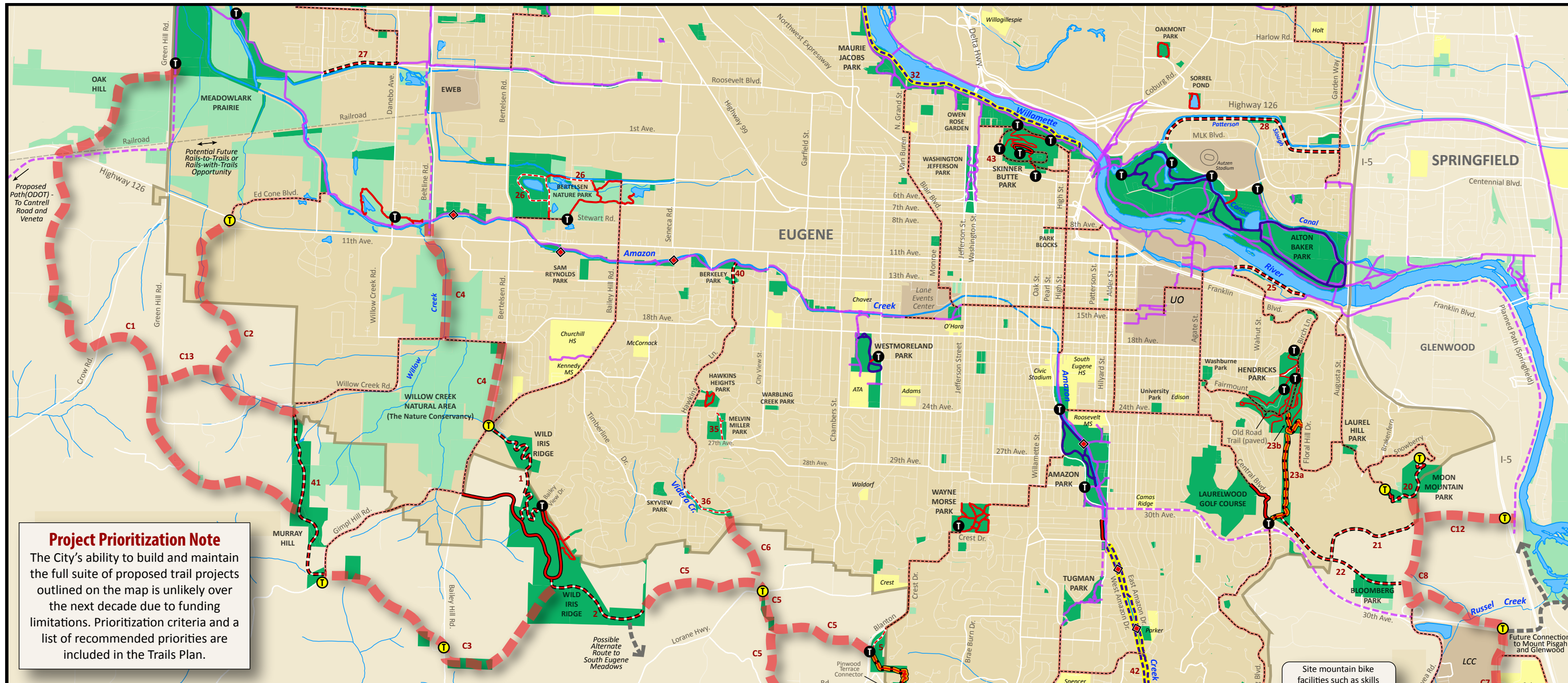
**Project Prioritization Note**  
 The City's ability to build and maintain the full suite of proposed trail projects outlined on the map is unlikely over the next decade due to funding limitations. Prioritization criteria and a list of recommended priorities are included in the Trails Plan.

Conduct feasibility study on potential future trail options

# DRAFT



SPRINGFIELD



**Project Prioritization Note**  
 The City's ability to build and maintain the full suite of proposed trail projects outlined on the map is unlikely over the next decade due to funding limitations. Prioritization criteria and a list of recommended priorities are included in the Trails Plan.

Site mountain bike facilities such as skills park, designated single-track, and cyclocross (locations to be determined)

**EUGENE TRAILS PLAN**  
 Existing and Proposed Trails Map - South Section

0 1/2 1 Mile  
 Scale

**Legend**

- City Owned Parks and Open Spaces
- Other Parks and Open Spaces\*
- Schools and School Properties
- Urban Growth Boundaries
- Existing Pedestrian Trails
- Existing Shared-Use Trails (bikes/peds)
- Existing Designated Running Trails
- Existing Shared-Use Paths (paved)
- Planned Shared-Use Paths (paved)
- Existing Designated Trailhead

**Proposed (Locations Approximate)**

- New Pedestrian Trails
- New Shared-Use Trail or Corridor
- Shared-Use Corridor Compatibility Study\*\*
- Key On-Street Connection (ped/bike)
- New Running Trail
- Future Trail Corridor (Shared-Use)
- New Trailhead
- New Bridge (Shared-Use)
- Regional Connection or Feasibility Study

**DRAFT**  
 August 6, 2015

Map Produced by  
 JK Environments

\* Includes State, Federal, County, and Land Trust properties (public access may be restricted)  
 \*\* Evaluate options for accommodating shared-use (pedestrians and bicycles) within the corridor through a parallel trail system, trail upgrades, or alternative routes.

**Note:** The locations of the proposed trails shown on the map are conceptual and will be refined based on supplemental analysis, land availability, and voluntary land owner participation.

**DRAFT**