

**City of Placerville**

**COMMUNITY PRIDE  
PUBLIC SPACE  
LANDSCAPE INVENTORY**



**City Gardens \* Work Projects \* Public  
Art**







**Gardens & Projects Upper  
Placerville**

**TECHNICAL ASSISTANCE** provided to Placerville Community Pride Committee by: Steve Youel and Bob Pyne; Steve Calfee, Andrew Painter, Donn Smith, and Mark Ivani; Duane Scheurer and Steve Russell of Caltrans, and Stafford Lehr of California Department of Fish & Game

**DOCUMENT** of Public Spaces Landscape Inventory, preparation and photographs, by Josette Johnson.

**SPECIAL THANKS** to: Steve Youel, Placerville Public Services Director, for guidance and support.

**CONTACTS:**

**For more information regarding:**

\* **Fund Raising & Garden Tour:** Elizabeth Zacharias

\* **Gardens & Projects:** Josette Johnson

\* **Beautification Awards:** Steve Pace

\* **Public Art:** Michael Hendren

\* **Downtown Walking Tour:** Marilyn Ferguson

**ADDRESS INQUIRIES TO:**

Community Pride Committee

Town Hall, 549 Main Street

Placerville, California 95667

Attn: Committee Chair, Elizabeth Zacharias

**TELEPHONE:** (530) 642-5232

**FACSIMILE:** (530) 295-1228

**E-MAIL:** [CommunityPride@comcast.net](mailto:CommunityPride@comcast.net)



**Gardens & Projects Lower  
Placerville**

# COMMUNITY PRIDE

## PUBLIC SPACE LANDSCAPE INVENTORY

*City Gardens \* Work Projects*  
*Public Art*

Prepared for the  
City of Placerville  
by Community Pride Committee

2007



# MAIN STREET MAPLES



*Bloodgood: Deep red, hardy & heat tolerant.*



*Fire Glow: Crimson (sp) red (sm) crimson (fall)*



*Big Leaf Maple: Shade, leaves 1' across, gold in fall.*



*Coral Bark: Yellow in fall, twigs, branches red in winter.*



*Crimson King: Purple leaves hold color till they drop*



*Red Lace Leaf: Finely divided, purple,, crimson in fall.*



*Trident: Rich-green, ivy-like, red in the fall.*



*Lace Leaf: Green Bark, pale green leaves, gold n fall.*





**Mission Statement:**

*The function of Community  
Pride Committee is to encourage  
volunteer participation in  
beautification projects, on public  
spaces, that improve the grace and  
charm of the City of Placerville.*

Est. 1990

Tim Davies  
Manny De Antonio  
Steve DeWitt  
Marilyn Johnson  
Keith Johnson  
Dennis Leach  
Steve Papp  
Cindy Podszus  
Steve Youel, Town

*Council Liaison - Placerville Staff Representatives:*



**City Gardens Work Projects Public Art**

\*  
\*

With every season, Placerville's grace and charm find new expressions in the contributions of Community Pride's volunteers and our many generous friends and allies. The inventory of downtown garden spots established and maintained by our efforts continues to grow, along with our ambitions for more and different projects.

To help realize our ambitions, we have recently emphasized activities that raise Community Pride's public profile and improve our outside fundraising. Our annual Spring Garden Tour has become a highly successful and eagerly anticipated event. Our periodic awards to local businesses and groups help inspire others to make beautification a priority.

Josette Johnson has graciously assembled this comprehensive portfolio of Community Pride's current and pending projects. It is an exciting and inspirational collection.

Along with our outstanding volunteers, sponsors, and project partners, the City of Placerville's professional staff and funding support are indispensable elements of our success. For example, the beautiful landscaping of the Fox Lot on Main Street was a collaborative effort that blended public and private efforts and included numerous City representatives as essential players.

This year, we hope to extend that collaborative effort, to add shading and landscaping in the center and at the rear of the Fox Lot. We expect to continue to play an active and constructive role in the many efforts to improve downtown.

Area residents know what a jewel Placerville is — Community Pride takes pleasure in showing what a little "polish" can do for it.

Com  
mitt

ee Chair, Elizabeth Zacharias

Placerville Community Pride



## FOX LOT PROJECT

**BEFORE**



**AFTER**



### Fox Lot NOW (see below) Still to Come:

#### *Completion of Phase One*

The City and Revitalization plans to install an ore cart at the crosswalk with platform and curbs around box.

- *Phase Two*

Manny DeAquino, The EDC Fireman's Association, City and Community Pride to install shade tree planters, and natural storm drains in the center of lot.

- *Phase Three*

Riparian Planting of mixed natives to establish a "creekscape" that shades stream the asphalt and improves water quality with a stormwater meadow and future plans include Replacing the cyclone fence with a wrought iron fence and wooden footbridge.





# Table of Contents



<b>1. City Gardens:</b>	<b>Location:</b>	<b>Volunteer:</b>	<b>Pages:</b>
<b>A. Broadway —</b>			
	#01 Redwoods at Broadway on Mosquito at Main Street	Judy Davis & Family	8 & 9
<b>B. Upper Main —</b>			
	#02 Ivy House Park at Cedar Ravine and Clay Street	Cindy Podsiadlo	10 & 11
	#03 Soda Works Garden on Main Street	Susan and Tim Daviess	12 & 13
	#04 Gold Bug Park at Hattie's Museum	Elizabeth Zacharias	14 & 15
	#05 Ivy House Parking Lot at Cedar Ravine and Main Street	Mo Daly	16 & 17
	#06 Bell at Bedford & US 50 near Main Street	Steve Pace	18 & 19
	#10 Town Hall East at Clay and west to Town Hall bridge & Bedford	Scouts, Steve Dowty, & C.N.PS.	26 & 27
	#11 Green and Gold garden in planter in front of Chamber Bldg.	Chamber of Commerce	28 & 29
<b>C. Lower Main —</b>			
	#07 Gardens at old City Hall Building & Fern Garden at Creek	Josette Johnson	20 & 21
	#08 Gardens at City Hall Pkg & Odd Fellows Bldg and Pizza Place	Keith Johnson	22 & 23
	#09 Gardens at the Bell Tower in Downtown Main Street	Dennis Look	24 & 25
	#12 Welcome to Placerville Sign area on U.S. 50	Deb. Power/Oak Ridge HS Steve	30 & 31
	#13 Creek at City Hall to Public Defenders Office at Bedford	Dowty & Co.	32 & 33
	#14 Garden at Hwy. 49 and Main Street	Mo Daly	34 & 35
	#15 Ore Cart Garden at Bedford and U.S. 50	Kathi Lishman and Pierre Rivas	36 & 37
	#16 Gateway to the Sierra garden at U.S. 50 & Main Street	Dennis Look	38 & 39
	#17 Quartz Alley creekbed garden near Carry House	Bob Pyne	40 & 41
	#20 U.S. 50 from Main Street to Schnell School Rd & Clay & Creek	Josette Johnson	46 & 47
<b>D. Placerville Drive -</b>			48 & 49
	#18 Placerville Drive and Pierroz Road and Hangtown Creek	Sue Britting/A.R.C.	42 & 43
<b>E. New Project -</b>			
	#19 Landscape at Fox Lot and Main Street	Manny DeAquino	44 & 45
<b>2. Work Projects and Resources -</b>			
<b>A. Hangtown Creek Plan and Riparian Plant List</b>		Josette Johnson	50 & 51
<b>B. Work Program, Volunteers, Affiliated Groups, and Sponsors</b>		List of Supporters	58 & 59
<b>C. Brochure of Public Gardens and Gateway Project Before and After</b>		Marilyn Ferguson	52 & 53
<b>3. Public Art Projects -</b>			54 & 55









**CITY GARDEN:**

**PROJECT NUMBER:**

## **REDWOODS AT BROADWAY**

**#1**

**ADOPTED BY:** Judy Davis & Family, (daughter Ramona Davis Frenn and her son Kenny and daughter Leonie Davis Huse and children Heather, Amanda, Tyler, and Julia Huse).

**WHEN ADOPTED:** March, 1995

**CONTACT PERSON:** Judy Davis, 626-3036.

**SPONSORS & VOLUNTEERS:** No permanent sponsors. Dennis Look of "That Certain Look" has donated time to put in water and prune. Richard Hosking of The Front Yard Nursery has donated labor, and wildflower seeds. Bill Crim helped plant red and silver maples donated by Blair Reynolds in memory of his son Teddy. Mel Barbour of Stagecoach Plaza has donated the water and the five redwood trees.

**LOCATION OF PUBLIC SPACE:** Broadway and Main Street at Mosquito Rd.

**GARDEN TYPE:** Woodland, accented with pistache, California redbud, persimmon, dogwood, and a smoke bush. Zauschneria (California fuchsia) and wildflowers (poppies and lupine) provide color in fall and spring.

**WORK PLAN:** ('02-03) Planted poppy seeds, dogwood, smoke bush, zauschneria, guara, 1,400 daffodil bulbs, put in watering system; picked up trash and cut weeds.

**FUTURE PLAN:** ('03-04) Complete pruning of deadwood from trees planted by Cal Trans in the 1960's; complete removal of unwanted wild shrubs; shred; prune; place rocks to improve drainage and prevent parking; plant an additional 400 daffodils, bulbs; continue trash pickup and weed eating.

**GARDEN & PROJECT NEEDS:**

Labor —help with clearing and materials.







CITY GARDEN

PROJECT NUMBER

## IVY HOUSE PARK

#2

ADOPTED BY: Cindy Podsiadlo.

WHEN ADOPTED: 2002

CONTACT PERSON: Cindy Podsiadlo 642.0648.

SPONSORS & VOLUNTEERS: Community Pride  
and a Partnership with the Hangtown Creek  
Stewardship Committee.

LOCATION OF PUBLIC SPACE: The north side of  
the Ivy House parking lot, to the creek.

GARDEN TYPE: Revitalize the park's original  
landscape with native plants, improve soil and water.

WORK PLAN: ('02-03) Weed the park and remove  
non-natives, fix irrigation, and mulch. The plan  
includes a "use no spray" of herbicide area. And to  
inventory existing plants.

FUTURE PLAN: ('03-04) .Establish a manicured park-  
like appearance to contrast the wildland look across the  
stream to the north. Amend the plan to include  
replacement plants that thrive in the area.

GARDEN & PROJECT NEEDS: Work on irrigation.

GOALS: Restore the park to it's original plan.



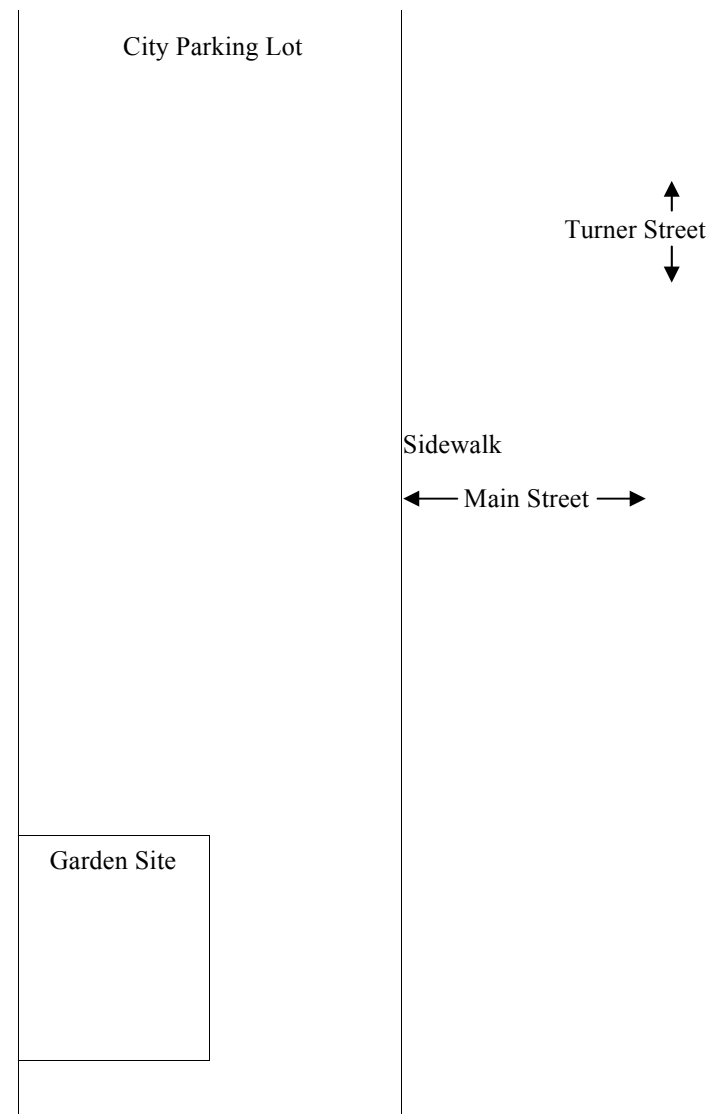








← Hazard Street →







**CITY GARDEN**

**PROJECT NUMBER**

## **SODA WORKS GARDEN**

**#3**

ADOPTED BY: Susan and Tim Daviess

WHEN ADOPTED: Spring 2005

CONTACT PERSON: Susan Daviess

SPONSORS & VOLUNTEERS: Community Pride.

LOCATION OF PUBLIC SPACE: Main Street at Cedar Ravine near the Soda Work building.

GARDEN TYPE: Maple Trees with ground covers.

This landscape brings the essence of the pines on the hillsides into the garden for a foothill feeling. A low maintenance garden that is colorful year round.

WORK PLAN: ('99-01) Work the soil, mulch with truckloads of Manure and shavings. Planted over story, under story, and ground covers. Establish Maple Trees along the sidewalk and a creekbed in the large planter next to Tortilla Flats. Repaired irrigation.

FUTURE PLAN: ('02-04) Add low lying ground covers, add bamboo and nandina and evergreens. Shape into interesting forms and add a wrought iron fence along the full length of the sidewalk to create an pedestrian friendly walking experience.

GARDEN & PROJECT NEEDS: Plant replacement, miniature conifers, paint fence, add bamboo brick & wrought iron fence. Update irrigations. GOALS: Show an example landscape at our east entrance to central downtown low maintenance, colorful, and a beauty spot.







CITY GARDEN

PROJECT NUMBER

## **GOLD BUG GARDEN**

**#4**

ADOPTED BY: Elizabeth & Lewis Zacharias, and Ellery Zacharias.

WHEN ADOPTED: 2002

CONTACT PERSON: Elizabeth Zacharias 642-2393

SPONSORS & VOLUNTEERS: Community Pride.

LOCATION OF PUBLIC SPACE: Gold Bug Park next to Hattie's Museum.

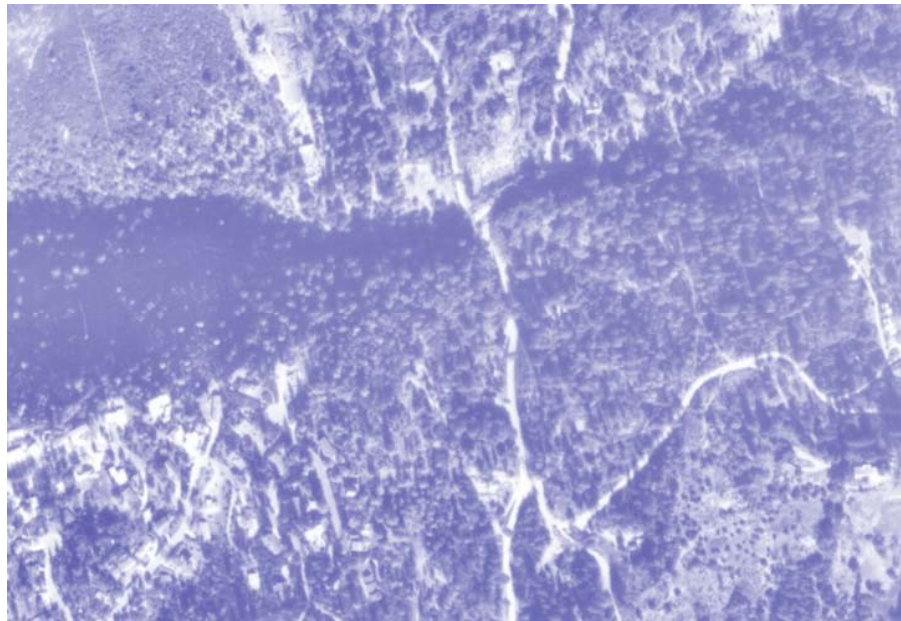
GARDEN TYPE: Native Plants together with some hardy garden varieties, including CA Fuschia, Poppy and Lupine.

WORK PLAN: ('02-03) Phase I, museum garden. Inventory plants already present, .install watering system, create a creekbed thru the garden, fill in plants to complete garden.

FUTURE PLAN: ('03-04) Create Phase II, on the sunny slope, and Phase III, at the Big Canyon Creek Pond. These projects include planting native plants on the slope and a water garden & pond at the entrance to the museum.

GARDEN & PROJECT NEEDS: Help with installing watering system, rock for Phase I, creekbed project, plants to complete Phase II garden. Help with labor for Phase III.

GOALS: To crate a colorful garden of mostly native plants to beautify the entrance to the mine and also to educate visitors about California native varieties.









CITY GARDEN

PROJECT NUMBER

## IVY HOUSE PARKING PLANTER #5

**ADOPTED BY:** Mo Daly.

**WHEN ADOPTED:** March, 1993.

**CONTACT PERSON:** Mo Daly 626-8977.

**SPONSORS & VOLUNTEERS:** Community Pride.

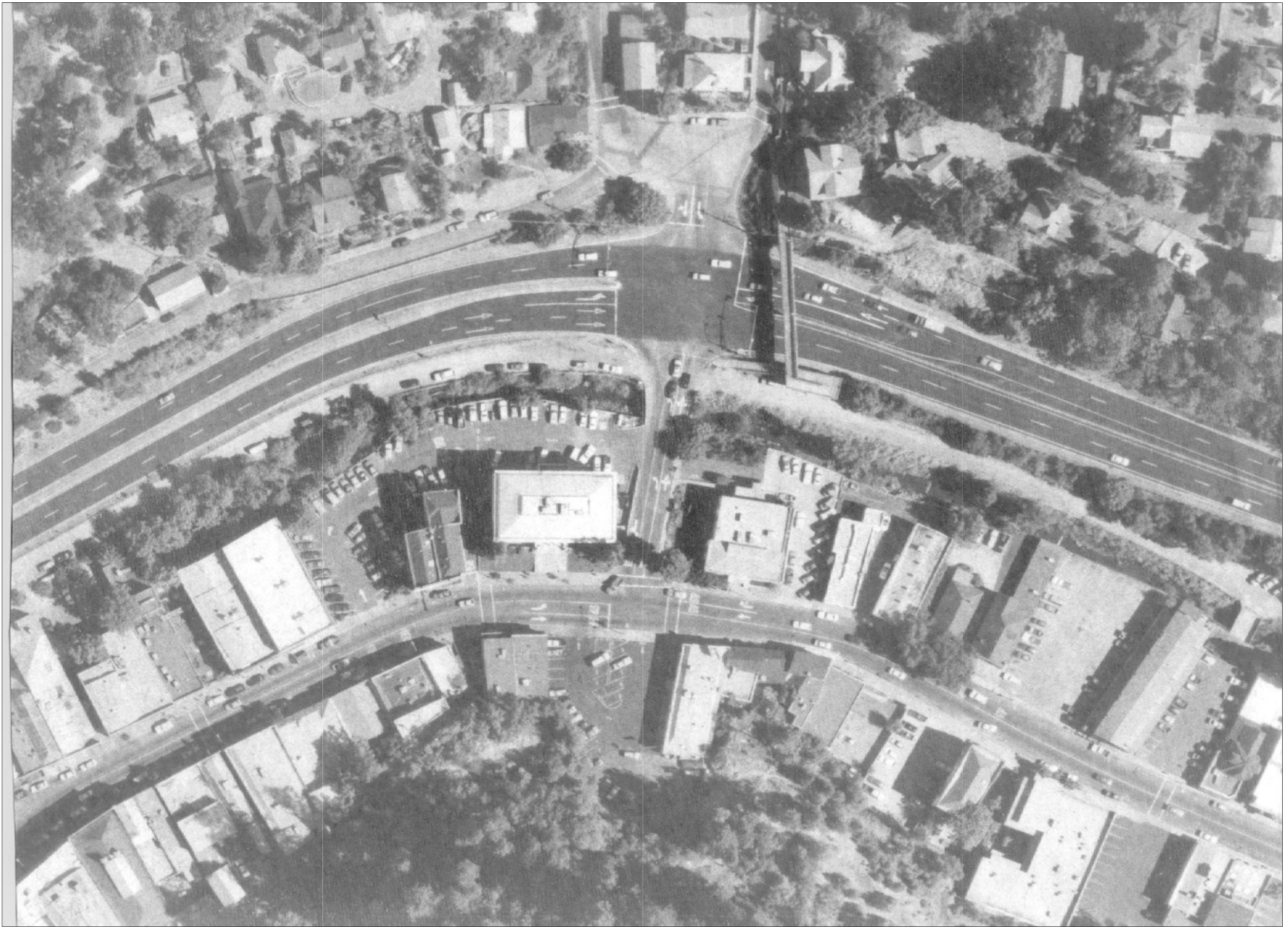
**LOCATION OF PUBLIC SPACE:** Main St. at Cedar Ravine and Clay Street.

**GARDEN TYPE:** Planter garden with trees, shrubs, perennials and bulbs.... Cottage-garden style.

**WORK PLAN:** ('01-02) Establish a cottage style garden, work with existing planting of cork oak tree, shrub ceanothus and other natives. The overall layout has low perennials and evergreens to the front of the border, a large mixture of successive blooming perennials behind, then larger shrubs and evergreens including oak tree, then low perennials and evergreens in back. As the garden matures there will be an evergreen hedgerow that will screen the parking lot from Main Street view, and from the other side. This will give the parking lot a private park-like feeling. The abundance of perennials will flower successively, Spring through Fall, and give the feeling of the Victorian style gardens. **FUTURE PLAN:** ('02-03) Includes careful control of existing plants, removal of invasive plants, additional plantings of perennials and evergreens for more of a year-round appeal. Also, continual care of weeding, mulching, fertilizing, and pruning.

**GARDEN & PROJECT NEEDS:** Weeding, planting, fertilizing, and mulching.

**GOALS:** It is my hope that this garden typifies the gardens and styles of the Placerville Victorian era and will further enhance the sense of community through its park-like setting. Though it may include many plant species that were unavailable at that time, the garden will surely draw the interest and attention of the pedestrian and car traffic that passes by.







CITY GARDEN

PROJECT NUMBER

## BELL AT BEDFORD

#6

ADOPTED BY: Steve Pace.

WHEN ADOPTED: 1996

CONTACT PERSON: Steve Pace 626-6975.

SPONSORS & VOLUNTEERS: Community Pride, Mark Barnes of Sleepy Hallow Nursery & The Lighthouse.

LOCATION OF PUBLIC SPACE: Bedford between Main Street & US 50.

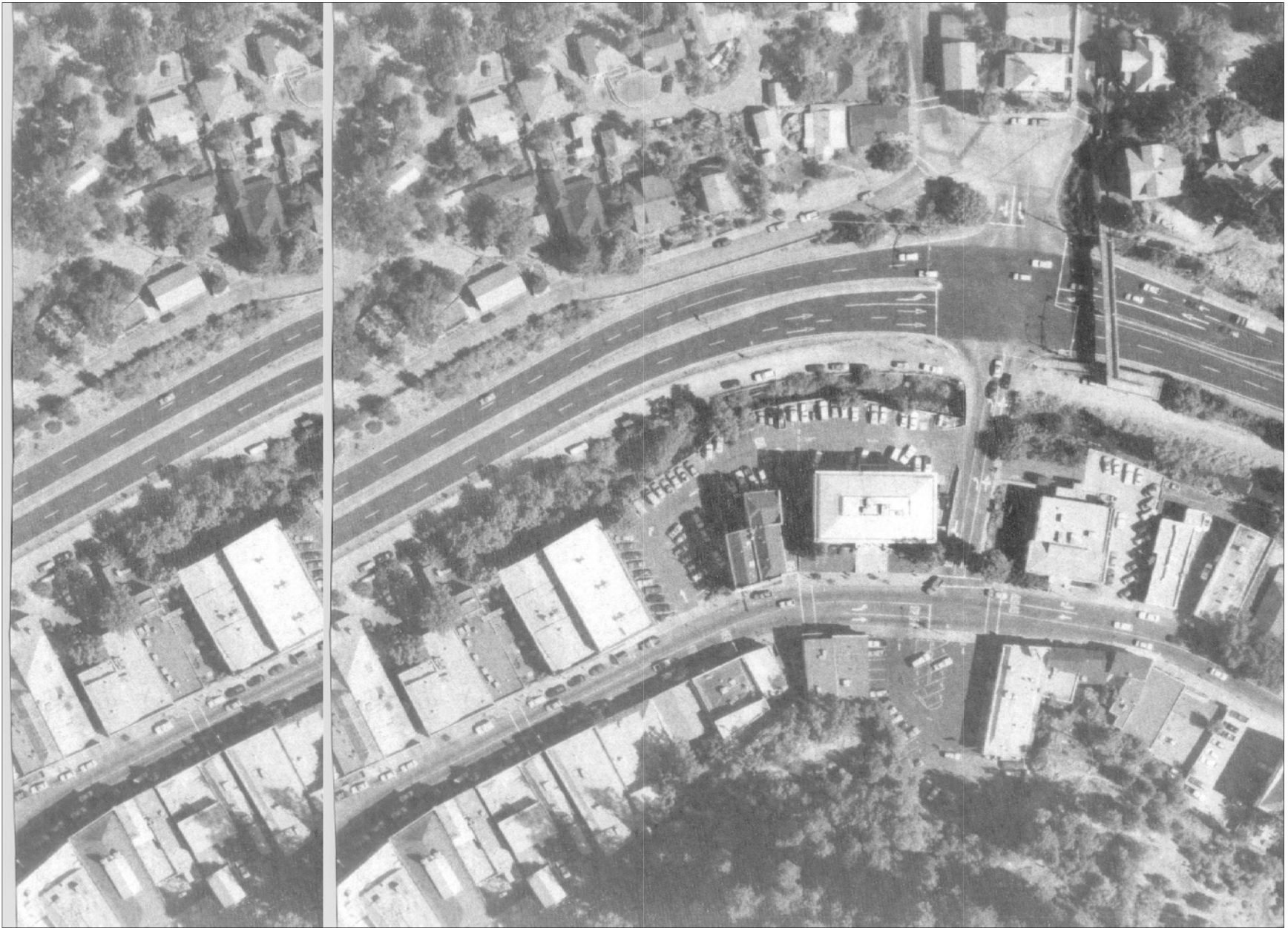
GARDEN TYPE: Rock garden with a granite moss rock, Alpine look, small leafs, gray, purple, and green foliage. Pink and purple blooms. Elevation to 2 1/2 feet. As a base for some select trees.

WORK PLAN: ('02-03) Clear existing garden of plantings, groundcover and Bermuda grasses, watering system, (control good, valve and tubing in need of replacement), sprayed once with roundup and pre-emergent, deliver rock and soil.

FUTURE PLAN: ('03-04) Place rocks restore watering system, add amended soil, more rock, and plants.

GARDEN & PROJECT NEEDS: Help with labor, materials (plants).

GOALS: To inspire further adoption of the area near the creek and the DA's office.







CITY GARDEN

PROJECT NUMBER

## **GARDENS AT CITY HALL BUILDING #7**

**ADOPTED BY:** Keith and Josette Johnson.

**WHEN ADOPTED:** 1993.

**CONTACT PERSON:** Josette Johnson - 626-4038.

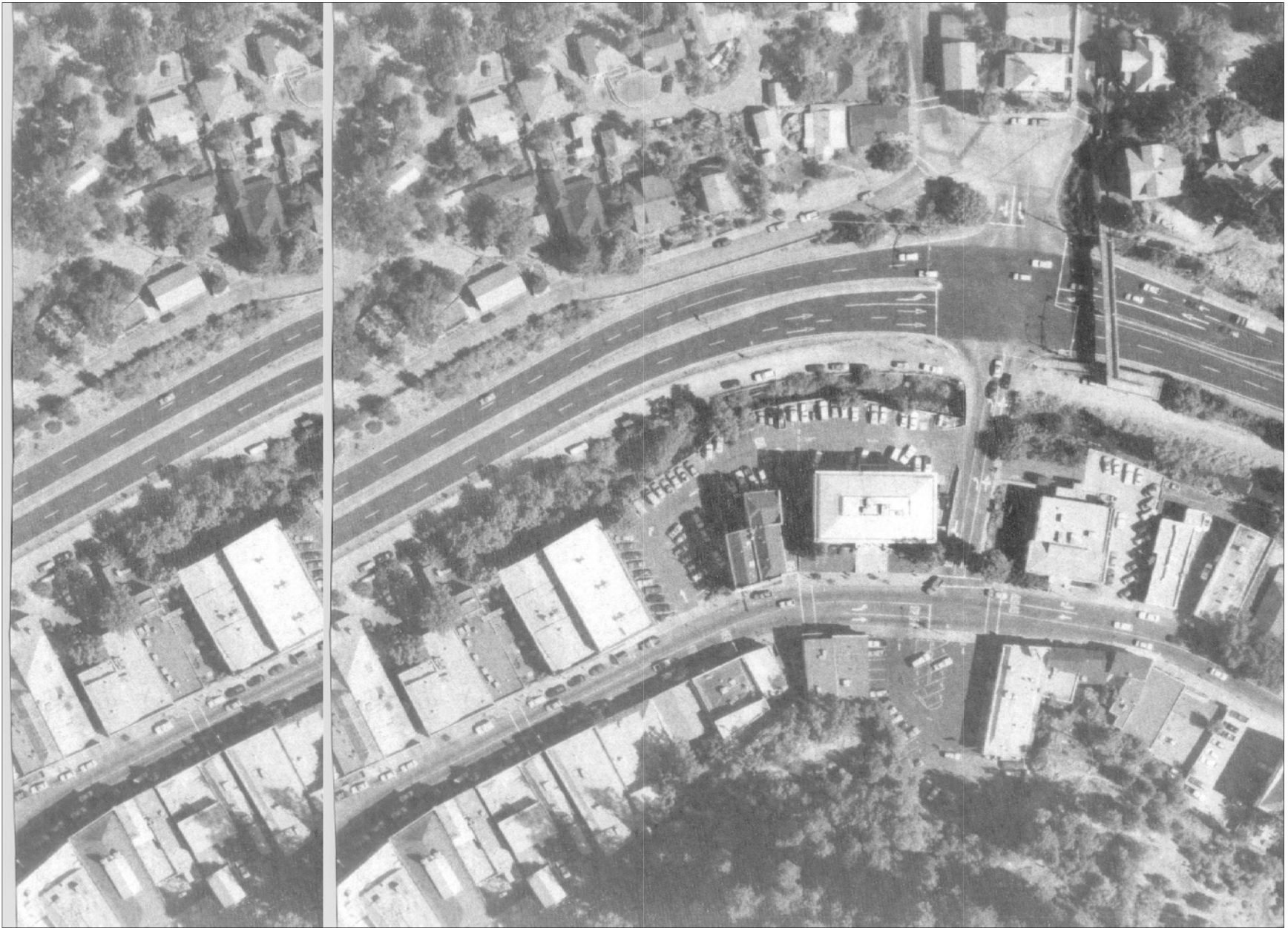
**SPONSORS & VOLUNTEERS:** Community Pride and Josette.

**LOCATION OF PUBLIC SPACE:** Planters around the City Hall building and one planter in the back lot area next to creek.

**GARDEN TYPE:** 1. Back lot planter, a creek-side woodland fern garden. 2. Front clock tower, an alpine mountain meadow garden. 3. Back door at lamps, Victorian flower box garden. 4. Alley stairwell garden, evergreen garden. 5. North-side planters, boxwood hedgerow. **WORK PLAN:** ('02-03) Amendment soil, (rock phosphate, kelp, guano, dolomite, vermiculite, sand, & peat moss) mulch for winter. A new Fire Glow Maple was donated and planted at the clock tower and City Hall by Keith & Josette and Helen in memory of Garry Smith. **FUTURE PLAN:** ('03-04) Add a wrought iron trellis at back door flower box garden. Replace chain link fence with a aesthetically pleasing fencing that shows off creek. Add more annuals at flower boxes and at clock tower, plant alpine miniature rock garden in back of clock, add miniature ferns and a native moss collection in alley under stairwell, and add a morning glory vine at fern garden near creek.

**GARDEN & PROJECT NEEDS:** Summer - salvias, Fall - peat moss, Winter - fertilizer, Spring - pansies. Also, irrigation replacement (sprinklers heads, occasionally a new timer) and plant replacement.

**GOALS:** Connect the gardens around City Hall with our signature style gardens. Thus establishing a repeating mountain theme, while allowing for individualistic expression. These patterns and relationships tell a story about area history, climate, soil, land forms, birds, plants, and the volunteers. Establishing a mountain town look in Placerville is the common thread that runs though all of our gardens.



**CITY GARDEN**

**PROJECT NUMBER**

**CITY HALL VICTORIAN GARDEN**

**#8**

ADOPTED BY: Keith Johnson

WHEN ADOPTED: Spring 1993

CONTACT PERSON: Keith Johnson

SPONSORS & VOLUNTEERS: Community Pride

LOCATION OF PUBLIC SPACE: City Hall Parking Lot

GARDEN DESCRIPTION: An old-fashioned garden with an alpine feeling . Dogwood donated by Kathi Lishman.

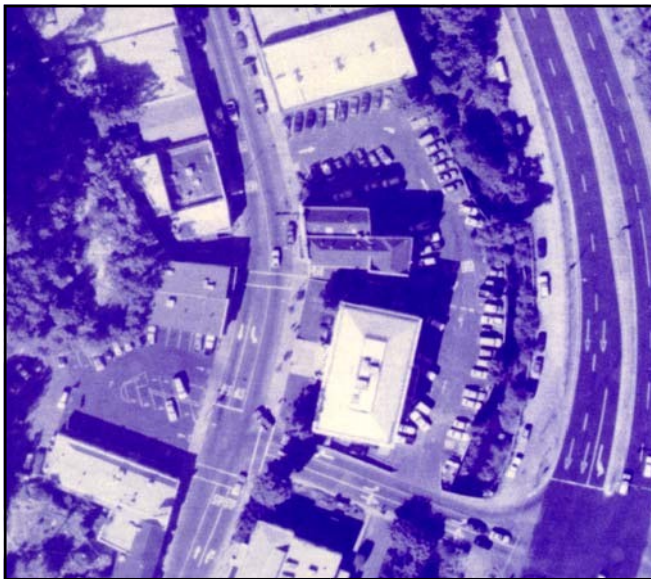
WORK PLAN: (01-02) Maintain the trees and the garden, (irrigate fertilize, mulch, weed, remove litter) and increase color with seasonal plantings for year round enjoyment

FUTURE PLAN: (02-03) To plant old-fashioned annuals and expand the types of plants to emphasize the Victorian garden

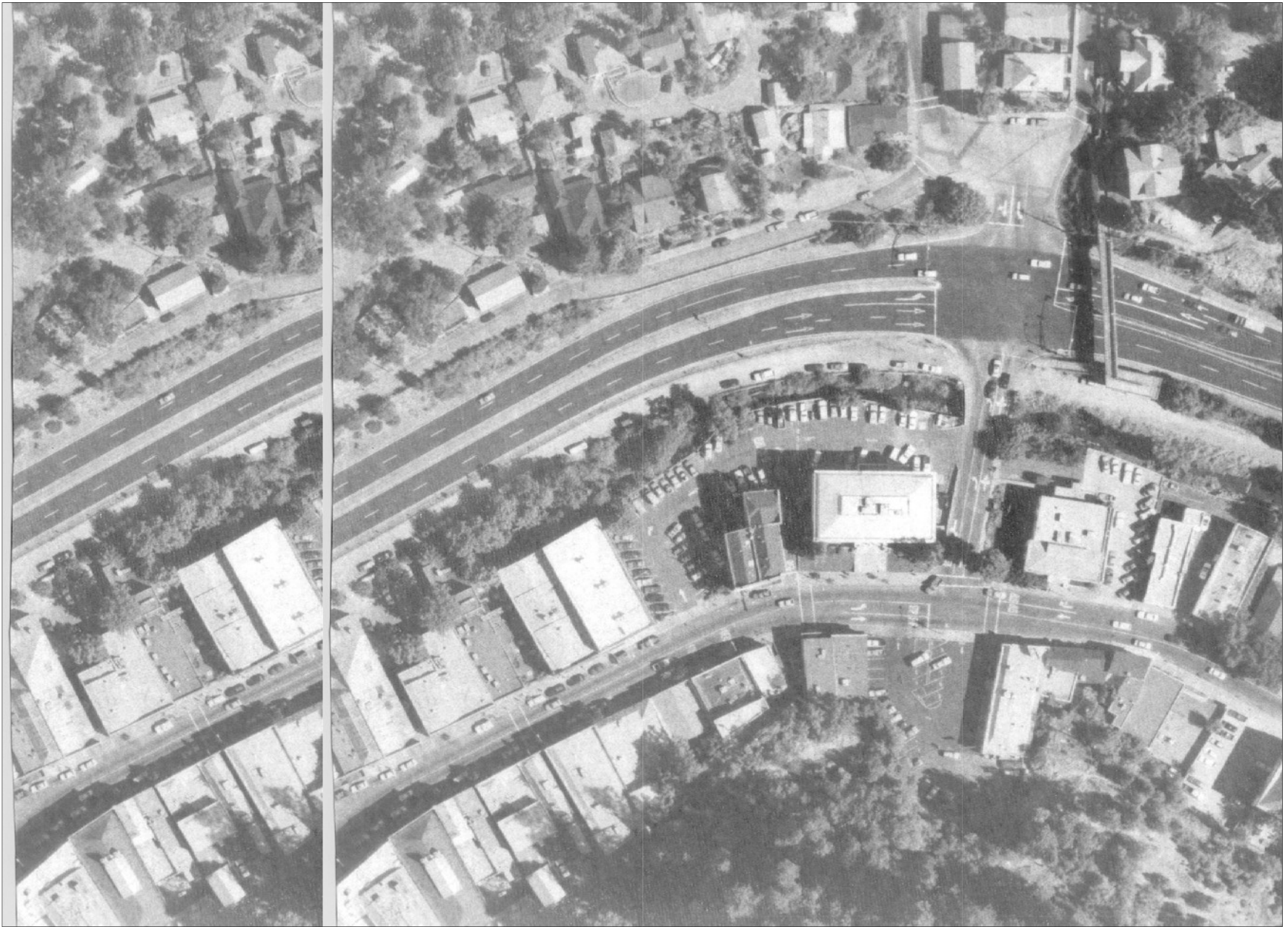
GARDEN & PROJECT NEEDS: plants, mulch, fertilizer, and irrigation maintenance. Annual flowers in Spring and Summer. Move bus stop to the Bell Tower or install a bus shelter in the adjacent compact stall for transit users.

GOALS: To soften the look of City Hall parking lot, establish a common thread (Alberta Spruce, Maples, & Vinca) that ties the gardens together and beautify our historic downtown









CITY GARDEN

PROJECT NUMBER

## **BELL TOWER PLANTERS**

**#9**

ADOPTED BY: Dennis Look

WHEN ADOPTED: Spring '93.

CONTACT PERSON: Dennis Look 626-4188.

SPONSORS & VOLUNTEERS: Community Pride & the  
Placerville Downtown Association.

LOCATION OF PUBLIC SPACE: Downtown Main Street.

GARDEN TYPE: Planter flower boxes.

WORK PLAN: ('02-03) Replace overgrown, oversized junipers.

FUTURE PLAN: ('03-04) Replace overgrown plants with scented  
geraniums, ground cover rose, low growing azalea and low lying  
scotch moss and violets.

GARDEN & PROJECT NEEDS: Labor for maintenance and  
plant Materials for replacement. Install automated irrigation system  
to allow for planting a hanging flower box garden.

GOALS: Establish a low maintenance landscape, that allows traffic  
turning east added visibility. A garden that is hardy enough to  
withstand high traffic, auto exhaust, extreme heat reflecting off  
asphalt, pedestrian traffic, sitting, trampling and other abuse. This  
planting of the Bell Tower flower boxes will accentuate the natural  
rock work and create a flowing sculptured look with different  
textured foliage and flowers.









**CITY GARDEN**

**PROJECT NUMBER**

## **TOWN HALL EAST**

**#10**

**ADOPTED BY:** California Native Plant Society, El Dorado County Chapter.

**WHEN ADOPTED:** May 1996.

**CONTACT PERSON:** Jeannine Wilkinson 676-3245 & Sue Britting 626-8366.

**SPONSORS & VOLUNTEERS:** C.N.P.S. (California Native Plant Society)

**LOCATION OF PUBLIC SPACE:** Both sides of Clay Street only the hillside near the Ivy House Parking lot — but including the creek to Town Hall bridge at the creek, on the west side of the street.

**GARDEN TYPE:** Native plants to be used entirely — We would like to make a small picnic area near the Redwood tree.

**WORK PLAN:** ('02-03) June 22 — Spring clean up. At that time we cleared the creek of debris and cut back non-native to encourage the native grasses we found. In Aug. '96 we met with a member that has some experience in landscape planting and our efforts on the terraced area may be placed on hold awaiting planning and water. We will continue to plan the creek area.

**FUTURE PLAN:** ('03-04) We plan to have work parties this summer to further clean and plant areas of the creek bank. First is scheduled for April 6.

**GARDEN & PROJECT NEEDS:** Labor — Remove chain-link fence. Materials — New chain-link fence if the old Chain-link can't be used.

(Received a permit from CalTrans to move fence).

**GOALS:** We would like to modify the uphill site by moving the fence - and creating a picnic area and more open space. We want to make this an educational site for the use of native plants for home landscaping.







**CITY GARDEN**

**PROJECT NUMBER**

## **TOWN HALL WEST**

**#11**

**ADOPTED BY:** Placerville Girl Scouts.

**WHEN ADOPTED:** April 1996.

**CONTACT PERSON:** Dee Cutter 626-7458.

**SPONSORS & VOLUNTEERS:** Girl Scouts & Donations.

**LOCATION OF PUBLIC SPACE:** From Town Hall bridge to Bedford Ave.

**GARDEN TYPE:** Nature Study Area. To show a demonstration of the importance of Hangtown Creek as a Rainbow Trout fishery. Work days mainly centered around Earth Day for girls to earn their Eco-action badge for community service.

**WORK PLAN:** ('02-03) Worked at Town Hall East raking mulch and planting willow trees to shade the stream.

**FUTURE PLAN:** ('03-04) Establish a permanent work area for the Placerville Girl Scout troops to work at restoring Hangtown Creek at this location. The plan is to plant Alder, Willow, and Cottonwood, and remove fennel and thistle. In future work parties the girls will plant shrubs, ground covers and grasses to show an example of beneficial plants for fish, wildlife, birds, bees, humming birds, and butterflies, as well as night dwellers. All plantings will be approved by Fish & Game.

**GARDEN & PROJECT NEEDS:** Labor - Trash pick up. Materials - Dogwood, Alder and grasses, rush, sedge & ferns.

**GOALS:** The goal of this project is to enhance this important section of stream as an fishery, introduce the girls to natural spaces, and improve visually the high potential of this area as an Creek-side Parkway.







CITY GARDEN

PROJECT NUMBER

## WELCOME SIGN AREA

#12

ADOPTED BY: El Dorado High School.

WHEN ADOPTED: Fall 1993.

CONTACT PERSON: Debra Power 622-3634 (x1151) 6445438  
dpower@ehs.eduhsd.k12.ca.us

SPONSORS & VOLUNTEERS: EDHS

LOCATION OF PUBLIC SPACE: Welcome to Hangtown Sign Area between Canal & Spring on Hwy 50.

GARDEN TYPE: Urban Garden Area along Hwy. 50 & Riparian restoration along stream bank.

WORK PLAN: ('02-03) \* Monitor air, soil & water quality. \* Control of invasive & poisonous vegetation such as blackberry, junipers, and oleander. \* Continue re-vegetation.

FUTURE PLAN: ('03-04) \* Demonstration site for public access - picnic table, park bench, footpath, garbage can, & planter boxes.

GARDEN & PROJECT NEEDS: Labor -EDHS Materials –

\* Native vegetation, cuttings, bare root alder, container stock is always needed. \* Large garbage cans for solid waste. \* Large rocks (12" x 12" x 12") &/or boulders to serve as borders and foot paths.

GOALS: Demonstration area to encourage, restore & renovate Hangtown Creek.







#### CITY GARDEN

#### PROJECT NUMBER

### **CREEK AT CITY HALL TO IVY HOUSE#13**

ADOPTED BY: Josette Johnson, Helen Ramstad & Steve Dowty.

WHEN ADOPTED: March 1996

CONTACT PERSON: Josette Johnson 626-4038.

SPONSORS & VOLUNTEERS: Community Pride.

LOCATION OF PUBLIC SPACE: Odd Fellows to Bedford Ave.

GARDEN TYPE: Restoration and Demonstration Project — Nature Study Area.

WORK PLAN: ('02-03) Establish a riparian corridor plant list (approved by Fish & Game 11/95) of plants indigenous to this area. Blackberry removal (3/96) and installation of native grasses, iris, rush, and sedges for erosion control and marsh restoration (4/96). Plant a hedgerow of native shrubs, vines, ferns, and flowers to enhance visual quality, improve water quality at tributary, and as a backdrop to US 50 (11/96).

FUTURE PLAN: (03-04) Finish planting marsh area (3/97), and begin work on putting in plants that serve as cover for wildlife (Fall '97). Spring 1999 begin "Nature Study" garden at Ivy house.

GARDEN & PROJECT NEEDS: Labor — Brush Hauling Materials — Western Chain Fern, Indian Rhubarb, and California Fuchsia.

GOALS: Establish a demonstration area at the North Bank of Ivy House to show an example of a riparian zone that has the proper balance of natural habitat, erosion protection, and allows free flow of high storm volumes. Also use as a study area to determine what management techniques are necessary to accomplish above. It is our hope that this representative project will lead to others and that, ultimately Hangtown Creek will become an important natural amenity that enhances the economic and social atmosphere of our community.







## CITY GARDEN

## PROJECT NUMBER

# HWY 49 & MAIN ST. GARDEN

#14

ADOPTED BY: Mo Daly.

WHEN ADOPTED: October 1995

CONTACT PERSON: Mo Daly 626-8977.

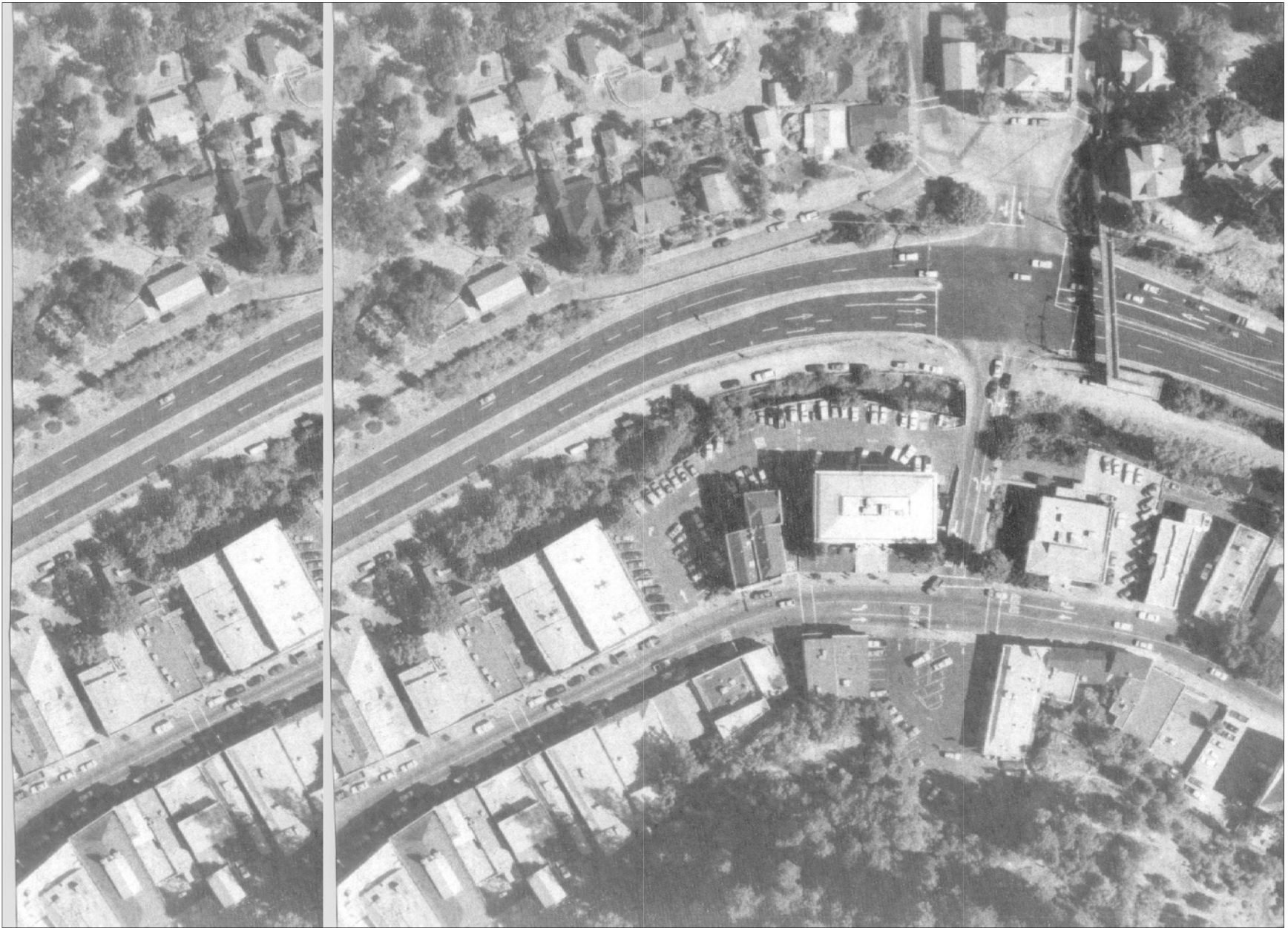
SPONSORS & VOLUNTEERS: Community Pride.

LOCATION OF PUBLIC SPACE: Sidewalk at Main and Spring.

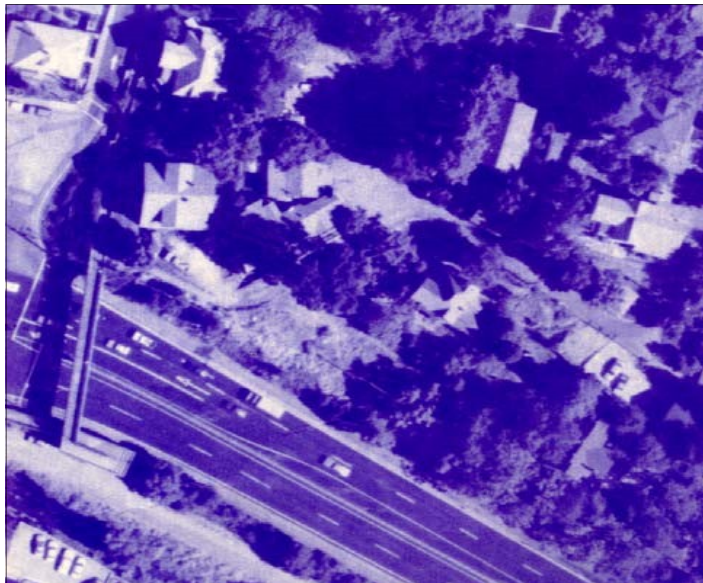
GARDEN TYPE: Sidewalk planter garden at the entrance to Placerville...a low, evergreen and perennial border garden complete with old-fashioned varieties of trees and plant species...Located in front of the vacant Faussel property, a beautiful rock wall, and abandoned entrance to the hillside property.

WORK PLAN: ('02-03) Bring in city water. Addition of soil, soil amendments, irrigation, brick walkways at crosswalk area, planting of trees, evergreens, perennials and bulbs, and mulching. FUTURE PLAN: ('03-04) Includes development of the garden planting, shaping of evergreens into topiary conical trees, ongoing maintenance and care of garden.

GARDEN & PROJECT NEEDS: Implementation of garden plans. GOALS: It is my hope that this garden has a formal, evergreen year-round appeal... and that it also look like it once was planted by the original homestead. I hope to balance the look of the two nearby gardens in color, plant choice, and scale, with this project named "Art in the Garden" I hope to include concrete sculpture and other outdoor art pieces appropriately placed.







CITY GARDEN

PROJECT NUMBER

## ORE CART GARDEN

#15

ADOPTED BY: Kathi Lishman and Pierre Rivas

WHEN ADOPTED: Adopted 1997

CONTACT PERSON: Kathi Lishman 626-6323

SPONSORS & VOLUNTEERS: Community Pride

LOCATION OF PUBLIC SPACE: Corner of US 50 and Bedford Ave at the Gold Bug Park sign.

GARDEN THEME & DESCRIPTION: Using annuals and perennials to create a river of gold from January to November PLANS:

- \* Work— To clean site, amend soil and plant.
- \* Future— Plant an additional Crab Apple tree on the south side of the ore cart. Add two virginia creeper vines along the bare cement retainer walls.
- \* Goals —To enhance historic Placerville, gold bug park and create a "river of gold" beauty spot with flowers and ground cover.

GARDEN & PROJECT NEEDS: Labor - help with maintaining the irrigation system. Materials - flowers for spring, summer, and fall plantings, soil, fertilizer, irrigation supplies for the ore cart. Help with removing the shrubbery adjacent to the Gold Bug Park directional sign and replace with low growing plants.







**CITY GARDEN**

**PROJECT NUMBER**

## **GATEWAY TO THE SIERRA**

**#16**

**ADOPTED BY:** Dennis Look.

**WHEN ADOPTED:** Nov. 1996.

**CONTACT PERSON:** Dennis Look, "That Certain Look" — 626-4188.

**SPONSORS & VOLUNTEERS:** Community Pride, Placerville Rotary and the Ponderosa High School Key Club.

**LOCATION OF PUBLIC SPACE:** US 50 & Lower Main Street Exit.

**GARDEN TYPE:** The Gateway project establishes an Alpine Garden theme that brings the mountains to Placerville thus connecting our foothill community with the mountains. The concept includes trees that change color with the seasons, evergreen and white barked trees, graceful shrubs set in a variety of flowers and ground covers designed to be attractive year round, low maintenance and drought tolerant.

**WORK PLAN:** ('02-03) Establish landscape.

**FUTURE PLAN:** ('03-04) Maintain landscape. Expand east along creek with Pacific Dogwoods.

**GARDEN & PROJECT NEEDS:** Labor and Materials Volunteers and donations.

**GOALS:** That this representative project will show an example of an low maintenance theme garden.







<b>CITY GARDEN</b>	<b>PROJECT NUMBER</b>
<b>CREEKBED AT QUARTZ ALLEY</b>	<b>#17</b>

ADOPTED BY: Bob Pyne.

WHEN ADOPTED: 2000

CONTACT PERSON: Randy Edwards – 295-0674.

SPONSORS & VOLUNTEERS: To be announced.

LOCATION OF PUBLIC SPACE: Quartz Alley.

GARDEN TYPE: Woodland garden creek-bed.

WORK PLAN: ('02) Amend soil, add hardscape plants to be installed in Spring and Summer of '99.

FUTURE PLAN: ('02-03) Maintenance and upkeep. Plant the area along Main Street with Summer flowers.

GARDEN & PROJECT NEEDS: Plants, soil amendments, rock/slate irrigation.

GOALS: To create pleasing gardens that tie in with creek/woodland atmosphere.







**CITY GARDEN**

**PROJECT NUMBER**

## **REVIVING AN URBAN RIPARIAN FOREST #18**

ADOPTED BY: American River Conservancy.

WHEN ADOPTED: June 1996.

CONTACT PERSON: Sue Britting. 621-1224 or 622-6814.

SPONSORS & VOLUNTEERS: A.R.C.

LOCATION OF PUBLIC SPACE: Corner of Placerville Drive and Pierroz Road.

GARDEN TYPE: Restoration and Demonstration area.

WORK PLAN: ('96-7) Phase One - Fall 1996; adopt spot, preliminary assessment of native/non-native plant species, identify project work required, wait for Placerville Drive roadwork to be completed, recruit El Dorado High School service club volunteers to plan carry out 3 work days ( October - December).

FUTURE PLAN: ('02-03) Phase Two — 1997; EDHS and ARC work days to clean up debris left by floods and do visual water monitoring are held monthly January-June. Woody debris from road work and flooding is burned, begin blackberry removal. EDHS advanced engineering and technology students survey parcel for mapping (3/97), landscape map is created (Fall 1997). Inventory plants that are already present. Begin non-natives removal. Phase Three — Winter 1997 - Spring 1999: plant native plants for flood and erosion control, fisheries and wildlife improvement. Improve stream banks for habitat, erosion control (wDFG approval). Maintain and nurture native plants. Continue water quality monitoring, possibly establish an official monitoring site to follow EPA protocols, collaborate with EDHS.

GARDEN & PROJECT NEEDS: Labor — Brush whacking of blackberries, brush clipping. Materials — Native grasses, wildflower seed for road work fill area, native trees to replace those damaged in road work. Benches and interpretive signage.

GOALS: To restore this section of Hangtown Creek and the riparian forest corridor, collaborate with other creek volunteers to enhance and restore the entire Placerville stretch of Hangtown Creek so that it becomes an urban creek model, an demonstration project for creek care, and an asset to the social and economic well being of our community. Long term goal: Get the sewer pipe underground.



**CITY GARDEN**

**PROJECT NUMBER**

## **FOX LOT WELCOME GARDEN #19**

**ADOPTED BY:** Manny DeAquino.

**WHEN ADOPTED:** 2000

**CONTACT PERSON:** Manny DeAquino. 622-1339.

**SPONSORS & VOLUNTEERS:** Martha and Mary DeAquino and Community Pride.

**LOCATION OF PUBLIC SPACE:** Fox Lot along Highway 49 at Sacramento Street and Main Street.

**GARDEN TYPE:** Streetscape Edge Garden at west entrance to Downtown that emphasizes the Mountain Town Theme. The three Black Maples in the raised planters were donated by Liz & Garry Smith.

**WORK PLAN:** ('02) Request that the city remove asphalt. Community Pride will fund planter, drainage and irrigation.

**FUTURE PLAN:** ('03) Community Pride Gardens & Projects committee will help with Maintenance and upkeep. Future plans may include a wooden foot bridge, bench, trash can, and a hydraulic monitor and/or sculpture along the creek.

**GARDEN & PROJECT NEEDS:** Asphalt Removal.

**GOALS:** This garden is intended to fill in and soften the vast amount of asphalt at this parking lot. The goal is to create a pedestrian friendly area, shade and cool the asphalt and improve stormwater drainage to the stream and create a creekscape along hwy 50. And a beauty spot from hwy 49. Also, to promote Placerville as the "Gateway to the Sierra" and as an destination place. Something that connects our foothill community to the mountains and helps enhance the beauty of our town.





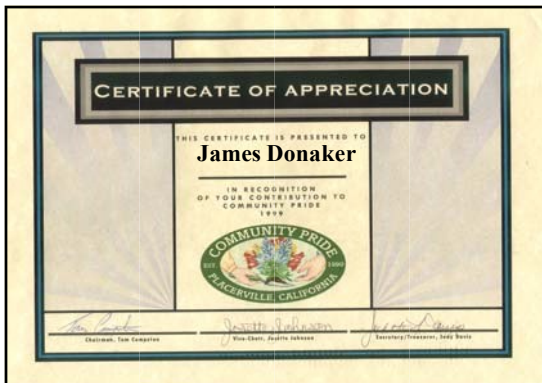




WILDFLOWER PLANTING - CALIFORNIA POPPIES



TREE PLANTING - FOUR PACIFIC DOGWOODS



*"Though I do not believe that a plant will sprout up where no seed has been. I have great faith in a seed. Convince me that you have a seed there, and I am prepared to expect wonders."*

Henry David Thoreau,  
*The Dispersion of Seeds*



WORK DAY WITH PLACERVILLE GIRLS SCOUTS ALONG HANGTOWN CREEK -



A-2 Mountain Democrat — Thursday, January 21, 1999

# Scouts plant poppies along creek

## Contribution part of community effort

By LEE ZION  
Staff writer

The day was cold and wet and rainy — Mother Nature tends to be that way in winter. But it was perfect weather for giving nature a boost as a gaggle of enthusiastic schoolgirls came out to plant flowers in Placerville.

Girl Scouts from Troop 173 ignored the rain Tuesday afternoon as they strewed poppy seeds on the north bank of Hangtown Creek, behind the Ivy House parking lot.

"We're planting poppy seeds to make Hangtown Creek a little prettier," said 9-year-old Catryn Davis. "It's fun!"

The planting is part of a joint effort between Community Pride, the Girl Scouts, the high school, the city and other groups, said Josette Johnson, cochair of Community Pride. The goal is to create one long trail to beautify the city.

"The city just recently approved a grant to extend the trail from Mosquito Road, where it ends right now, under the freeway, and down to this point right here," she said. "Community Pride has been working with the creek committee and the trails committee in coming up with a plan, if we win the grant, to help landscape this."

The Girl Scouts' work will link a long



Democrat photo by Joanne McCubrey  
TONI TOSCANO, of Girl Scout Troop 173, scatters flower seeds as part of a project to beautify the area along Hangtown Creek.

stretch of trail in the city, said Dee Cutter. As a former troop leader, she helped coordinate the Girl Scouts' work with Community Pride.

Cutter has great hopes for the trail. "It will become more of a visited park area. They'll put in benches along the way, so people will visit the trail," she said. "Eventually, we're going to have a plaque that designates that it's been adopted by the Girl Scouts, and I'll probably get around to doing that in the springtime, around Earth Day," she said.

The work is also an educational project, Cutter said.

"We want to make a demonstration garden here where we can show an example of a perfect riparian area with trees and grasses that control erosion. There's alder trees in there — I tell the girls how the bugs like the leaves, and then the bugs fall in the water, the fish eat the bugs. And then the alder trees put nitrogen in the soil and help the grasses and reeds grow better, and that helps the tree grow. The tree shades the water, keeps the water cool, and the trout like it better. This is a Class 1 rainbow trout stream," she said.

The trout are easily visible from the park benches on the south side of the creek, which makes the area an asset, said Johnson.

"We thought this would be a great spot. Community Pride has 20 gardens, and we were thinking of doing a walking tour of the public gardens of Placerville, have people park here, come down and then we could talk about this, and then walk them and look at the other places," she said.

Cutter said she hopes that other Girl Scout troops in the area will join the effort.





## CALTRANS ADOPT-A-HWY

# 20

*MAIN STREET EXIT TO SCHNELL SCHOOL ROAD EXIT*

*Community Pride joins Caltrans Adopt-A-Hwy program.*

*Contact Person: Josette Johnson 626-4038*

*Sponsors & Volunteers: Placerville Community Pride.*

*When Adopted: January 15, 1995.*



**Description:** Community Pride has planted and maintains several Adopt-A-Spots on U.S. 50 between the Main Street Exit and Schnell School Road Exit. Utilizing plants such as California Poppies, Lupine, California Fuchsia, Redwoods, Aspen and Chinese Pistache.

Community Pride has chosen to emphasize and help describe Placerville as the “Gateway to the Sierra.” The concept includes a “Flaming Gorge” theme of trees that change color with the seasons, evergreen and white-barked trees, graceful shrubs, a variety of flowers, and low-maintenance, and drought-tolerant ground covers.

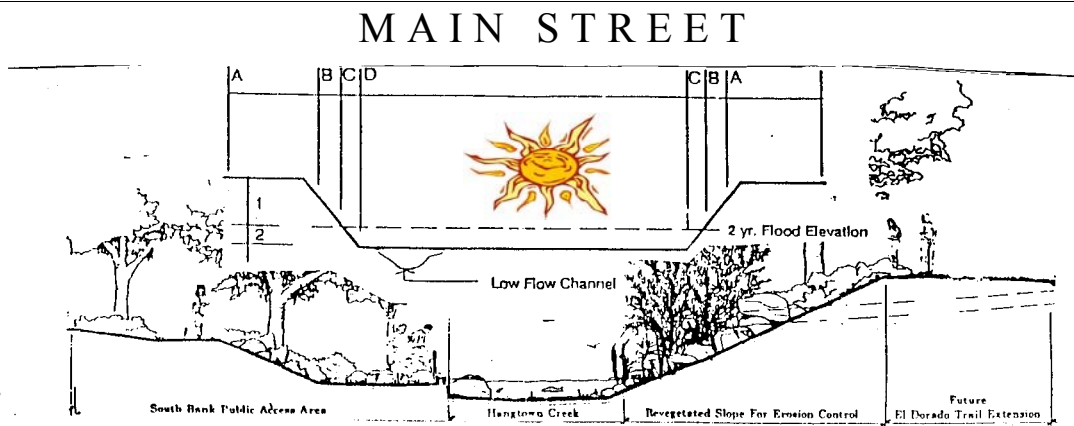
All wildflower and tree plantings are designed to be colorful, low-maintenance and attractive throughout the year. Included in our projects are work days with the Placerville Girl Scouts along Hangtown Creek. Our Goal is to teach children how the creek was a part of the Gold Rush history and to show them how they can help be a part of their community’s effort to restore the creek area by establishing a demonstration project as a “Nature Study Area”







**Special Note:** This concept plan, approved by Community Pride in Jan. of 1998, includes the area from Bedford Ave. to Clay Street at Hangtown Creek. Details of specific location, amounts and names of plants will be finalized by the Community Pride Gardens & Projects Sub-Committee. This is our third garden project within our two-mile CalTrans Adopt-A-Highway spot. The first two are: "Gateway to the Sierra" by Dennis Look at Main and US 50 and "Redwoods at Broadway" by Judy Davis at Main and Broadway. Our theme is to establish a "Flaming Gorge" of colorful flowers and trees.



## LEGEND

- A. Top of Bank – Dry**  
Grasses & Wildflowers
  - B. Mid-Bank – Dry/Moist**  
Shrubs & Trees
  - C. Lower Bank – Moist/Wet**  
Ground Covers & Vines
  - D. Channel Bottom – Wet**  
Rush, Sedge, & Ferns
- New Planting Locations**  
**Existing Planting Locations**



HIGHWAY 50



OLD SOUTHERN PACIFIC RAILROAD—(PLANNED HIGHWAY EXPANSION & CREEK-SIDE GREENWAY)



Streamside Revegetation Plan & Plant List for Bedford Ave. — Planting location for shrubs and trees reflect regimes, and flood magnitudes and frequencies, resilience  
vegetation to specific ecological zones, moisture



adaptability of

**JJ.8.98** to disturbance, and shading of water and other water quality benefits. All creek planting approved by Fish & Game. ***Placerville Community***  
***Pride Concept Landscape Plan***

Proposed Streamside Revegetation Plan — North Bank of Hangtown Creek, Zone one, Two, Three and Four Groundwater Requirements



## Hangtown Creek Plant Species List for The City of Placerville

Adopted by: Community Pride and the Hangtown Creek Stewardship Committee 11/95

Botanical Name	Common Name	Botanical Name	Common Name
<b>A. Top of Bank</b>		<b>C. Lower Bank</b>	
<b>Woody Plants</b>		<b>Woody Plants</b>	
Quercus wislizenii	Interior Live Oak	Alnus rhombifolia	White Alder
Quercus kelloggii	Black Oak	Populus fremontii	Fremont's Cottonwood
Arbutus menziesii	Madrone	Fraxinus dipetala	California Ash
Psuedotsuga menziesii	Douglas Fir	Acer negundo	Box Elder
Ceanothus sp.	Ceanothus	Willows Salix sp.	Willow shrub and tree
Umbellularia californica	California Bay	Sambucus mexicana	Blue Elderberry
Aesculus californica	Buckeye	Symphoricarpos albus	Snowberry
Styrax officinalis	Snowdrop bush	Rosa californica	California Rose
Cercis occidentalis	Western Redbud	Nitisa californica	California Grape
Heteromeles arbutifolia	Toyon	Acer macrophyllum	Big leaf maple
<b>Grasses and Wildflowers</b>		<b>Herbaceous Species</b>	
Nasella cernua	Nodding Needlegrass	Muhlenbergia rigens	Deergrass
Elymus glaucus	Blue Wildrye	Elymus triticoides	Creeping Wildrye
Melica californica	California Melic	Festuca rubens	Red Fescue
Calochortus sp.	Mariposa Lily	Deschampsia cespitosa	Calif. Hairgrass
Brodiea sp., Tritelia sp.	Brodiea (s)	Danthonia californica	Calif. Oatgrass
Diclostemma sp.	Calif. Diclostemma	Carex feta	Green-seath Sedge
Escholtzia californica	California Poppy	Carex barbarae	Santa Barbara Sedge
Lupinus sp	Lupine	Carex pachystacha	Thick-head Sedge
<b>B. Mid-bank</b>		Carex pregracilis	Clustered Field Sedge
<b>Woody Plants</b>		Carex senta	Rough Sedge
Quercus lobata	Valley Oak	Juncus, balticus, xiphoides	Rushes
Acer macrophyllum	Big-leaf Maple	Woodwardia fimbriata	Chain Fern
Cornus nuttallii	Pacific Dogwood	Adiantum filis-femina	Lady Fern
Rosa californica	California Rose	<b>D. Channel Bottom</b>	
Vitis californica	California Grape	<b>Woody Plants</b>	
Symphoricarpos albus	Snowberry	Rosa californica	California Rose
Calycanthus occidentalis	Spicebush	Salix sp	Willow
Sambucus mexicanus	Blue Elderberry	Alnus rhombifolia	Alder
Aristolochia californica	Pipevine	<b>Herbaceous Species</b>	
<b>Grasses and Wildflowers</b>		Carex and Juncus	Rush and Sedge
Hordeum brachyanthrum	Meadow Barley	Danthera peltata	Indian Rhubarb
Melica californica	California Melic	Equisetum arvense	Scouring Rush
Deschampsia cespitosa	California Hairgrass	Equisetum arvense	Horsetail
Danthonia californica	California Oatgrass	Eleocharis acicularis	Least Spikerush
Elymus triticoides	Creeping Wildrye	Leersia oryzoides	Rice Cut-grass
Carex feta	Green-sheath Sedge	Paspalum distichum	Joint Paspalum

### Streamside Revegetation - Plant List

Planting location for shrubs and trees reflect adaptability of vegetation to specific ecological zones, moisture regimes, and flood magnitudes and frequencies, resilience to disturbance, and shading of water and other water quality benefits.

All planting within the creek approved by Fish and Game.

JJ-12/97



Beneficial									
Native Plants									
DESCRIPTIONS:	EDIBLE	FRAGRANT	FALL COLOR	BLOOM COLOR	BERRIES	NIROGEN FIXING	EROSION CONTROL	POLLINATORS	ZONE
<b>TREES</b>								Hb (humming bird)	
Cottonwood			Yellow	White				Bf (butterfly)	M/S
Dogwood			Red	White	Red			Birds	W/SH
Alder						Yes	Yes	Insects	W/SH
Willow			Yellow				Yes	Birds	W/SH
<b>SHRUBS</b>									
Toyon				White				Birds	M/S
Manzanita	Yes			White				Birds	D/S
Redbud			Red	Purple		Yes		Birds	D/S
Cleanothus		Yes		Blue				Butterfly	D/S
coffeyberry								Butterfly	M/SH
Snowberry								Birds	W/SH
Haselnut			Red					Squirles	M/S
Currant	Yes			Pink	Berries			Birds/Hb/Bf	M/S
Azalea	Yes			White				Night Dwellers & Bf	W/SH
Coyote Bush		Yes		White				Bees & Bf	D/S
<b>GROUND COVER</b>									
Orgon grape	Yes	Yes	Bronze	Yellow	Blue			Birds	D/S
Penstemon				Blue/Purple				Hb/Bees	D/S
Goldenrod				Yellow					D/S
Yarrow		Yes		Yellow				Lady Bugs	D/S
Fuchsia				Red				Hummingbirds	M/S
<b>WILD FLOWERS</b>									
Lupine				Purple		Yes		Bees	D/S
Poppie				Orange				Bees	D/S
Blue-eyed Grass				Blue				Bees	M/S
<b>VINES</b>									
Rose	Yes	Yes	Yellow	Red	Red			Birds	M/SH
Honeysuckle	Yes	Yes		Pink				Hummingbirds	D/S

Climits	Yes			White				Night Dweller	M/S
Pipevine				White				Butterfly	M/S
Milk Weed									
<b>GRASS,BRUSH,SEDGE</b>									
Baltic Rush							Yes	Frogs/Fish	W/S
Purple needle grass							Yes	Frogs/Fish	D/S
Field Sedge							Yes	Frogs/Fish	M/S

[illegible]

Blue-eyed Grass												
<b>VINES</b>												
Rose												
Honeysuckle												
Clemitis												
Pipevine												
Milk Weed												
<b>GRASS,BRUSH,SEGE</b>												
Baltic Rush												
Purple needle grass												
Field Sedge												



# Community Pride

City Gardens, Work Projects & Public Art  
 “Walk in the Garden”  
 Public Gardens of Placerville



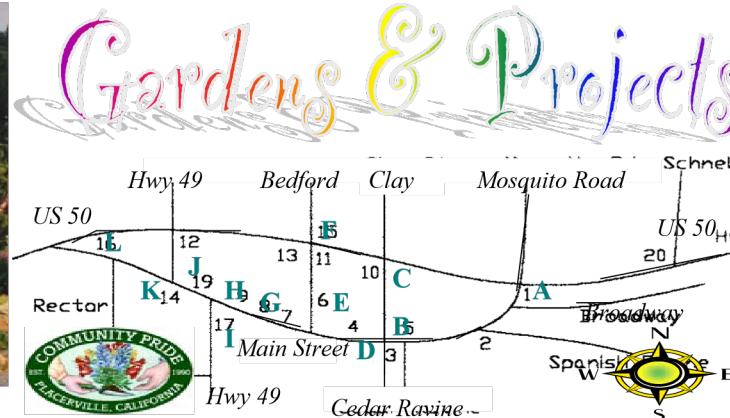
**L. Gateway to the Sierra** at US 50 and Main



**D. Maple Street Trees** on Main Street.



**E. Bell at Bedford** and Main Street.



**J. Fox Lot Garden** on Main Street

## TWELVE COMMUNITY PRIDE PUBLIC GARDENS AND PROJECTS IN UPPER TOWN, MIDTOWN AND DOWNTOWN PLACERVILLE

**A. Redwoods at Broadway** by Judy Davis. Natural Woodland beauty spot at Main, Mosquito Road and Broadway.

**B. Country Garden** by Mo Daly. Native flowers, grasses, evergreens and trees at Main Street and Cedar Ravine.

**C. Urban Riparian Forest Restoration** by Josette Johnson. Trees & wildflowers at Hangtown Creek and Clay Street.

**D. Maple Street Trees** by Tim & Susan Daviess. Evergreens rocks, moss, flowers Main Street & Cedar Ravine.



**I. Quartz Alley Garden** at Hwy 49 south of Main.

**E. Bell at Bedford** by Steve Pace. Mountain Rock Garden with shade trees in the park at Bedford Ave., Main Street and US 50.

**F. River of Gold** by Kathi Lishman. Trees, ground cover, vines, bulbs, wildflowers and Ore Cart at US 50 and Bedford Avenue.

**G. City Hall Gardens** by Helen Ramstad. Alpine meadow of ferns, alpine flowers, Dogwood, Aspen and Hemlock on Main Street.

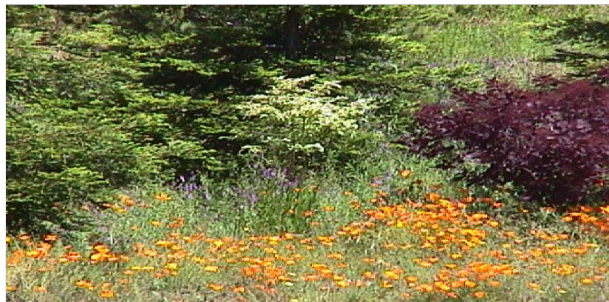
**H. Bell Tower Gardens** by Dennis Look. Ground covers & trailing roses in stone planters at the Bell Tower in downtown Main Street.

**I. Quartz Alley Gardens** by Bob Pyne. Creekbed garden under Raintrees at Hwy 49 and Quartz Alley.

**J. Fox Lot Garden** by Manny DeAquino. Flowers and foliage create shocking beauty at Hwy 49 and Main St.

**K. Art in the Garden** by Mo Daly. Trees, old fashioned Victorian flowers and vines on Hwy 49 at Main Street.

**L. Gateway to the Sierra** by Dennis Look. Mountain garden of lawn, flowers and trees at US 50 and Main St.



A. Redwoods at Broadway and Main Street.

K. Art in the Garden at Hwy. 49 & Mai



## Community Pride

### Board Members:

*Chairman*, Elizabeth Zacharias  
*Vice-Chair*, Josette Johnson  
*Secretary and Treasurer*,

Michael Hendren  
Mo Daly  
Susan Daviess  
Kathi Lishman Deb  
Power Christine Thiel

### F. River of Gold Bedford & US 50

Ron Mueller  
**City Hall -**  
*Public Works Director*  
Jeff Crovitz

### Advisor Members:

Bill and Eileen Crim  
Perry and Sharron Beckely  
Keith Johnson  
Dennis Look  
Dave Machado Kathi  
Lishman  
Deb Power  
Diane Hernandez

### Sponsors:

**City of Placerville -**  
City Council Members:  
Mark Acuna, Mayor  
Robbie Colvin, Vice Mayor  
Patti Borelli  
Carl Hagen  
Pierre Rivas

*Public Services Director*

### C. Hangtown Creek Between US 50 and Main Street

“...a ditch somewhere — or a creek, meadow, wood lot, or marsh... These are places of initiation, where the borders between ourselves and other creatures break down, where the earth gets under our nails and a sense of place gets under our skin.”

“...everybody has a ditch, or ought to. For only the ditches, and the fields, the woods, the ravines — can teach us to care enough for all the land.” *Robert Michael Pyle - The Thunder Tree, 1993*



**Staff Representative: Town Hall -**

at Cedar Ravine on Main Street **Contact:**



**Community**



**Attention:**  
Elizabeth Zacharias,  
Committee Chair  
**Telephone:**



**B. County Garden**



**C. City Hall Gardens on Main Street**

**100% of Donations  
Fund the Public  
Gardens of Placerville**

-53-





*P  
r  
i  
d  
e  
C  
o  
m  
m  
i  
t  
t  
e  
e*

*l  
e  
,  
C  
a  
l  
i  
f  
o  
r  
n  
i  
a  
9  
5  
6  
6  
7*

549 Main Street, Town Hall

*P  
l  
a  
c  
e  
r  
v  
i  
l*

(530) 642-5232

**G. City Hall Gardens** at Clock Garden on Main Street

**Flowering Dogwood at City**

**Dedicated to Improving  
the Grace and**

**Charm of Plac-**





*Original Gateway to Lake Tahoe, at Forni Road and the Main Street exit.*

## *Gateway to the Sierra*



before



after



Caltrans Adopt-A-Hwy Program  
—Since 1995 -



### Grasses, Rush, and Sedges –

Grasses: Rushes:

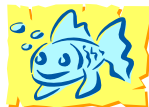
Acnatherum (Stipa) lemmonii – grass  
 Agrostis diegoensis – leafy bent grass  
 Calamagrostis rubescens – pine grass  
 Danthonia californica – Calif. wild oat grass  
 Deschampsia caespitosa – tufted hair grass  
 Elymus (Sitanion) elymoides – wild rye  
 Festuca californica – Calif. fescue  
 Festuca idahoensis – blue bunch grass  
 Festuca rubra – red fescue  
 Koeleria macrantha – grass

Juncus balticus – balticus rush  
 Juncus dubius – mariposa rus  
 Juncus macrandrus long anthered r.  
 Juncus nodosus - rush  
 Juncus oxymersis – pointed rush  
 Juncus patens - rush  
 Juncus tenuis - rush  
 Luzula comosa - rush  
 Equisetum arvense – scouring rush

Sedges:

Leersia oryzoides – rice cut grass  
 Melica californica – Calif. melica grass  
 Nasella (Stipa) lepida – grass  
 Nasella pulchra – grass  
 Panicum acuminatum – grass  
 Paspalum distichum – dallis grass  
 Pleuropogon davyi – grass

Eleocharis acicularis - sedge  
 Carex lanuginosa - sedge  
 Carex mendocinensis - sedge  
 Carex pachystachya – thick headed s  
 Carex praegracilis - sedge  
 Sisyrinchium bellum – blue eyed gr.



NEW THIS YEAR –  
 LANDSCAPE UNDER  
 CONSTRUCTION:  
 A SIGNATURE COMMU-  
 NITY PRIDE MOUNTAIN  
 THEME GARDEN  
 UNDER THE GOLDEN  
 RAIN TREES AT  
 QUARTZ ALLEY  
 FEATURED WILL BE A  
 SHADY CREEK WITH  
 INNER-GORGE PLANT-  
 INGS



COMPLETED LAST YEAR  
 – LANDSCAPE OF LOW  
 MAINTENANCE  
 LOCATED AT CITY HALL  
 IN THE ALLEY OFF MAIN  
 NEAR COURT HOUSE  
 A MOUNTAIN THEME  
 GARDEN OF EVER-  
 GREENS WITH MULCH &  
 ROCK  
 PLANS TO ADD A NATIVE



### Medicinal Value of Native Plants that grow along the banks of Hangtown Creek

Interior Live Oak	Quercus wislizenii	Bark was used as an astringent
Madrone	Arbutus menziesii	Leaves and bark made into an lotion for cuts and bruises
Ceanothus	Ceanothus sp.	Bark and Roots were used as an astringent and tonic seeds were used as food and flowers were used with water to make soap. The leaves for red dye and flowers and leaves make an refreshing tea
Poppy	Escholtzia californica	Used as an tranquilizer
Rose	Rosa californica	Hips were used to fight colds
Grape	Vitus californica	Leaves used as a poultice
Elderberry	Sambucus mexicanus	Flowers used as a tea decoction for influenza, TB (bleeding lungs, and stomach aches
White Alder	Alnus rhombifolia	Dried bark used to cause a sweat to purify the blood and a gargle was made to sooth sore throats and stomach ache Dry rot was used for burns and scalds Bark used as aspirin,

Willow

Salix sp.

References:

New Mexico Press  
 Medicinal Plants of the Mountain West  
 by Michael and Moore  
 POB 2087  
 Santa Fe, NM 87503

Wild Edible and Medicinal Plants of California  
 by Jeff Callegori and Keith Durand  
 UC Cal Press

Also at Newsstand: Native California Uses of Plants

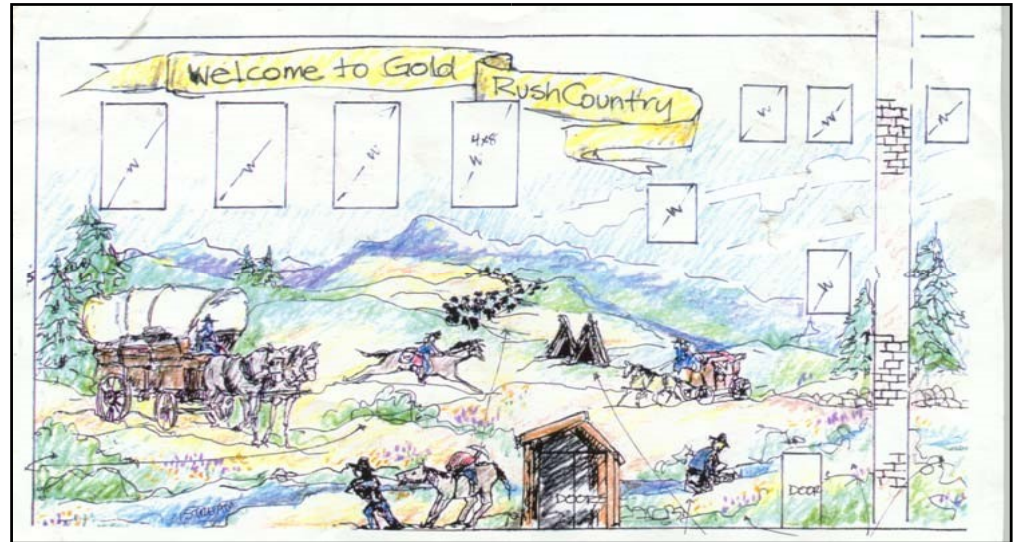
WILDFLOWER SEEDING  
 WITH THE PLACERVILLE  
 GIRL SCOUTS –  
 PLANS ARE IN THE  
 WORKS TO EXPAND TO  
 TREE PLANTING AS PART  
 OF OUR CALTRANS  
 ADOPT-A-HIGHWAY  
 TREE & WILDFLOWER  
 PROGRAM WITH



NEW THIS YEAR - A  
 NATIVE WILDFLOWER  
 PLANTING ON THE  
 NORTH BANK OF HANG-  
 TOWN CREEK AT IVY  
 HOUSE PARK – FUTURE  
 PLANS  
 FOR COMMUNITY PRIDE  
 INCLUDE A CREEK DEM-  
 ONSTRATION GARDEN  
 PLANS INCLUDE







*Public Art on Main Street  
Mural Ideas for Future Projects*









## Public Space # Gardens --

- 01) Redwoods at Broadway
- 02) Ivy House Park (New)
- 03) Soda Works Planter
- 04) Gold Bug Garden (New)
- 05) Ivy House Corner
- 06) Bell at Bedford
- 07) City Hall Bldg. & Fern Garden
- 08) City Hall Pkg. & Dogwood
- 09) Bell Tower on Main Street
- 10) Town Hall East at Creek
- 11) Town Hall West at Creek
- 12) Welcome Sign Area
- 13) Creek at Bedford Est & Wst.
- 14) Hwy. 49 & Main Street
- 15) Ore Cart at Bedford & US50
- 16) U.S. 50 and Main Street
- 17) Creekbed at Quartz Alley
- 18) Placerville Drive at Pierroz
- 19) Fox Lot at Main Street
- 20) Creek@Clay & AdoptAHwy

Public Art: -- Location

- 21) Mural at Odd Fellows Bldg..

Project Fund-Raising -

- 22) Spring Garden Tour

Community Outreach -

- 23) Community Pride Day

Projects -

- 24) Streetscape Projects
- 25) Shade Trees for Fox Lot
- 26) P'dr at Green Valley Road
- 27) Shade Trees for Ivy Hse Lot
- 28) Randolph Creek Project

## VOLUNTEER

Judy Davis  
Cindy Podsiadlo  
Tim and Susan Daviess  
Elizabeth Zacharias  
Mo Daly  
Steve Pace  
Josette Johnson  
Keith Johnson  
Dennis Look  
Jeannine Wilkinson  
Boy & Girl Scouts  
Deb Power  
Steve Dowty  
Mo Daly  
Kathi Lishman  
Dennis Look  
Bob Pyne  
Sue Britting  
Manny DeAquino  
Josette Johnson  
Coordinator -  
Michael Hendren  
Coordinator -  
Elizabeth Zacharias  
Coordinator -  
Dennis Look  
Coordinator -  
Steve Pace  
Manny DeAquino  
Available Project  
Cindy Podsiadlo  
Diane Hernandez

## Recommendations

Beauty Spot of Trees & Flowers  
Revitalize Landscape Plan  
Soil Amendments, Rock & Flws  
Revitalize Landscape Plan  
Country Gardens of Flowers  
Mountain Rock Flowers  
Alpine meadow under Aspen  
Flowers from Spring to Spring  
Low growing trailing plants  
Native Plant Demonstration  
Shade Trees & Wildflowers  
Environment monitoring w/EUHS  
Creek clean up on non-natives  
Old fashioned Victorian flowers  
River of Gold w/flowers  
Mountain theme w/flowers  
Creekbed and Under Lamppost  
Work days with students  
Mulch, Spring & Sum. Flowers  
Flaming Gorge of trees & flowers  
Project -  
Welcome to Gold Rush Country  
Project - Fundraising  
Annual Tour of Private Gardens  
Project Description -  
Annual Clean Up along Hwy 50  
Project Description -  
Riverwalk, Bridges, Rock, Iron & Brk  
Complete Project for 2002-03  
Placerville Drive Landscape  
Shade Parking Lot w/Realign.  
Work days with Students

29) Community Pride Web Page	Josette Johnson	Community Pride Workgroup
30) Printing and Publishing	Marilyn Ferguson	Downtown Walking Tour Map

**Special thanks to all of the people who support Placerville Community Pride Committee**  
**VOLUNTEERS \* SPONSORS \* DONORS**

**Board Members:**

Elizabeth Zacharias, C  
 Josette Johnson, Vice-c  
 Michael Hendren, Secr

**Community Pride Me**

Mo Daly  
 Susan Daviess  
 Kathi Lishman  
 Deb Power  
 Christine Thiel

**Community Pride Ad**

Perry and Sharron Becl  
 Bill and Eileen Crim  
 Marilyn Ferguson  
 Keith Johnson  
 Dennis Look  
 Steve Pace  
 Cindy Podsiadlo

**City Council Member**

Mayor, Mark Acuna  
 Vice Mayor, Robbi Col  
 Patty Borelli Carl  
 Hagen  
 Pierre Rivas

**City Staff Representa**

Steve Youel, Parks and  
 Randy Pesses, Public V  
 Steve Calfee, City Plan

**Volunteers & Affiliat**

Dee Cutter, Placerville  
 Transportation Commis



**Placerville Girl Scout Troop #5**

*...a ditch somewhere — or a creek, me  
 These are places of initiation, where the  
 and other creatures break down, where t  
 and a sense of place gets under our skin.  
 ...Everybody has a ditch, or ought to. F  
 fields, the woods, the ravines — can tea  
 land.*

**Robert Michael Pyle,**

**For more information re the pub**  
 Phone 626-4038, fax 295-1228, or e-r

**Volunteers and Affiliated Groups:**

Bob Pyne  
 Donn Smith  
 Kathy Trumbley  
 Pat McComb  
 Jim Donaker  
 Elizaabeth Smith  
 Deb. Power  
 Sue Britting  
 Steve Dowty  
 Diane Hernandez, Schnell School  
 Key Club Ponderosa High School  
 Hangtown Creek Stewardship Com.  
 Girl Scouts, Placerville  
 Camp Fire, Diamond Springs  
 El Dorado High School  
 Placerville Downtown Association  
 American River Conservancy  
 California Native Plant Society

**Sponsors and Donors:**

Downtown Revitalization  
 Rotary Club, Placerville  
 Odd Fellows, Placerville  
 Kathi Lishman, CP Volunteer  
 Judy Davis, CP Volunteer  
 Helen Ramstad, CP Volunteer  
 Steve Dowty, CP Volunteer  
 Keith Johnson, CP Volunteer  
 Steve Pace, Lighthouse  
 Jim Moore, Moore Methods  
 Sierra Landscape Materials  
 Front Yard Nursery  
 Gold Hill Nursery



