



DURATONE-n[®]

Carta de Moldes Mould Chart

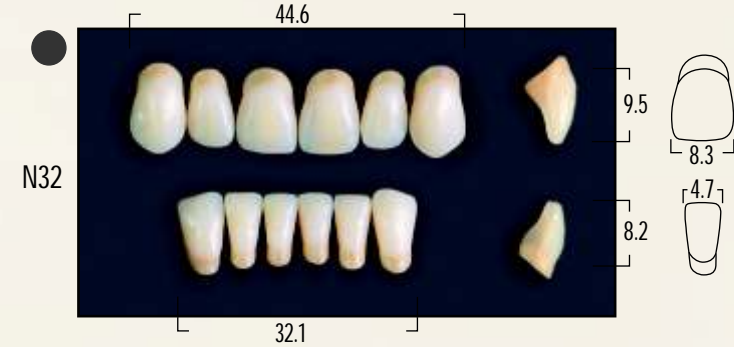
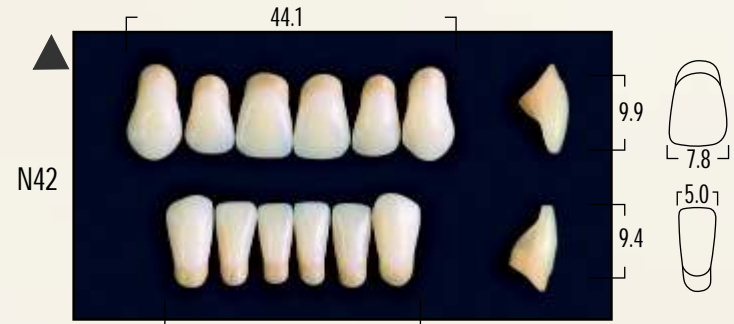
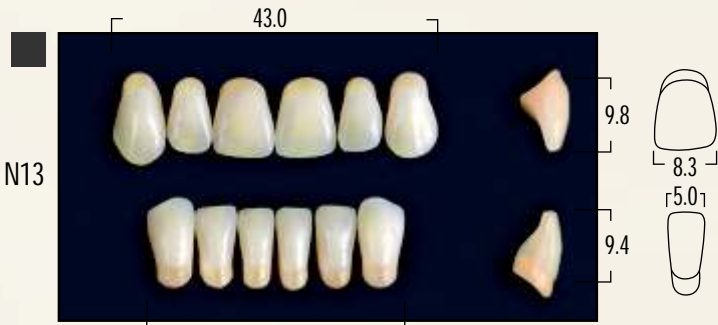
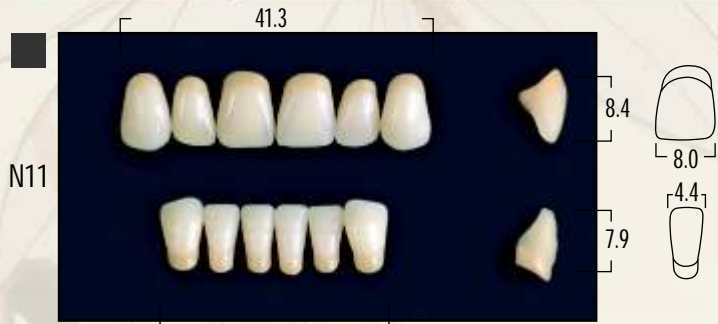
Cuatro capas cromáticas
Dientes acrílicos caracterizados
con cross link

Four chromatic layers
Cross linked characterized
acrylic teeth



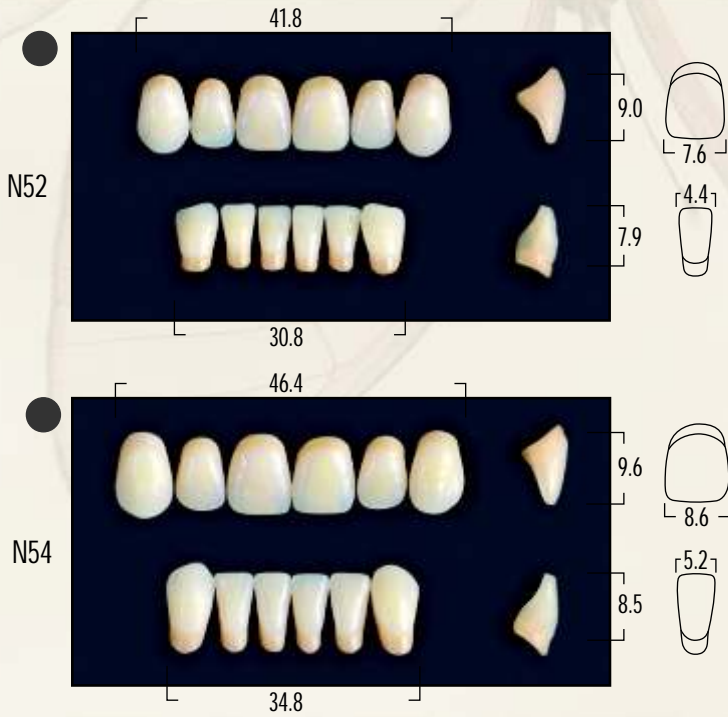
Dientes Acrílicos Acrylic Teeth

DURATONE-n[®]





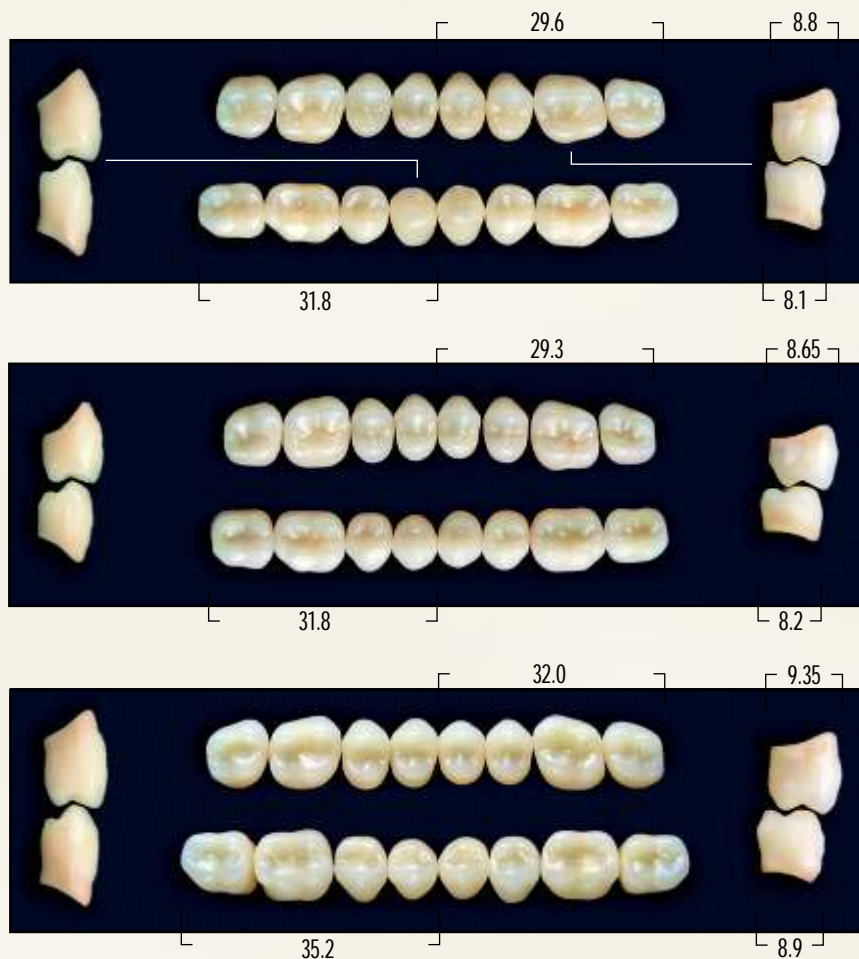
Anteriores superiores e inferiores
Upper - Lower Anterior



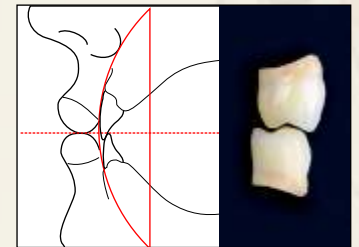
ARTICULACIONES - ARTICULATION

Anteriores Anteriors	Posteriores Posteriors		
N11	N2	N5	-
N12	N2	N5	-
N13	N2	N4	N5
N14	N4	N5	-
N17	N6	N7	-
N22	N2	N4	-
N24B	N1	N5	-
N27	N3	N6	-
N32	N2	N4	N5
N42	N2	N4	N5
N52	N2	N5	-
N54	N4	N5	-

Posteriores superiores e inferiores
Upper - Lower Posterior



N1 Normal-Bite



Articulación Normal

En la articulación normal, el análisis de perfil del arco vertical de los dientes anteriores muestra una línea de unión intervestibular, perpendicular al plano de oclusión.

N2 Normal-Bite

Normal-Bite

With normal bite types (according to Angle, Class I), the intervestibular line of the anterior profile curve is perpendicular to the occlusal plane. For these patients, N-type moulds are to be used.

N3 Normal-Bite

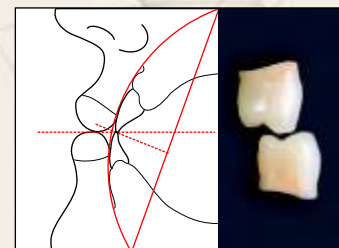
DURATONE-n[®]

Cuatro capas cromáticas

Four chromatic layers

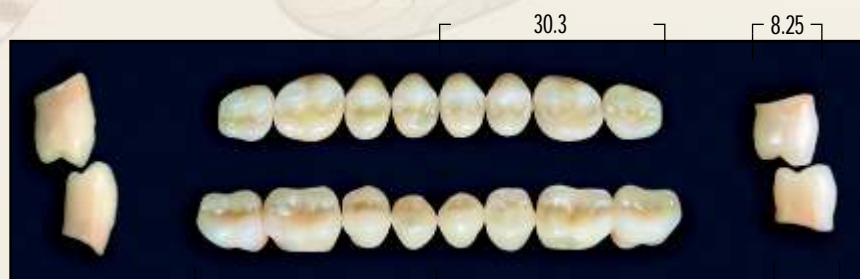


N4
Normal-Bite



Articulación Cruzada

En la articulación cruzada, el perfil muestra una mandíbula protruida. La línea de unión intervestibular forma un ángulo relativamente pequeño con relación al plano de oclusión.



N5
Cross-Bite

Cross-Bite

In a crossbite situation, a protruding mandible results in the intervestibular line forming a relatively acute angle in relation to the occlusal plane. C-type moulds are thus indicated, as their cusp inclination is relatively flat.



N6
Cross-Bite

Dientes de resina acrílica para prótesis removibles
 Tipo I (Anteriores) y
 Tipo II (Posteriores). ISO 22112



N7
Normal-Bite

Acrylic resin teeth for removable
 protheses Type I (Anteriors) and
 Type II (Posteriors). ISO 22112



Colores Shades

A1 -1A - 1C - 1D - 1E - 2A - 2B - 3C - 4A - 4B - 5B - 6B - 6C - B0



New Stetic S.A.
 Cr. 53 No.50-09 Guarne, Antioquia, Colombia, S. A.
 PBX: (+ +57-4) 550 00 00 - 551 31 22
 FAX: (+ +57-4) 551 31 34
 info@newstetic.com - www.newstetic.com



For the following field of activities
 Design, development, manu-
 facturing and marketing of
 Acrylic Resin Teeth and acrylic
 resins for dental use

ISO 9001: 2000

Registration Number: CO-SC 358-1